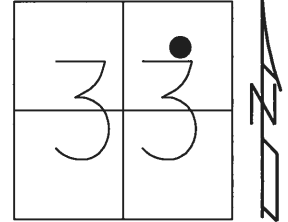


O.D.O.T. DISTRICT 2 SURVEY OFFICE (USE ONLY)

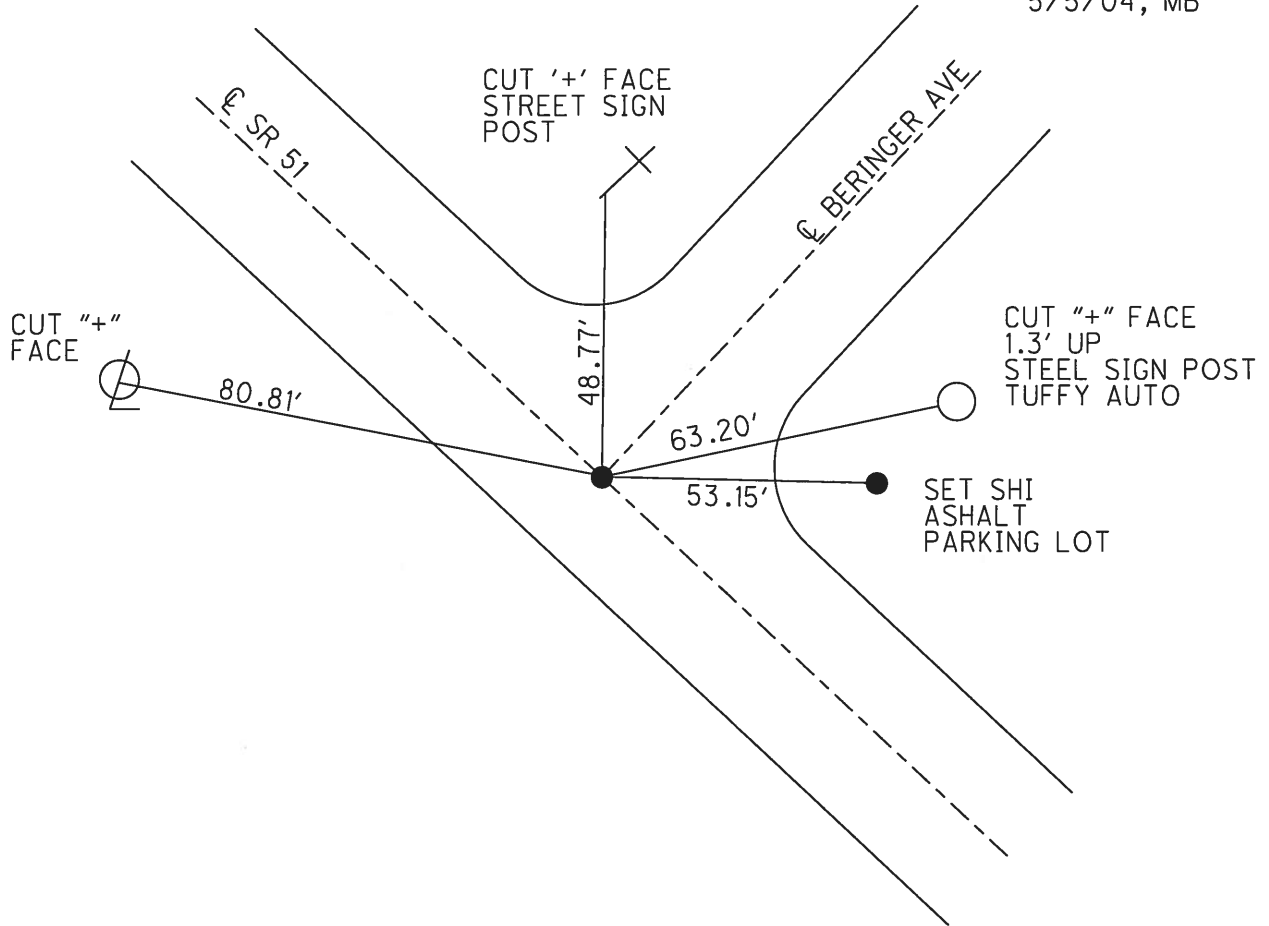
PERSONNEL \_\_\_\_\_ REFERENCE NO. 3 A SHEET 3 OF 13

NOTES BARNHISEL DATE 4/21/03 ROUTE SR 51  
 H.C. BARNHISEL WEATHER CLOUDY COUNTY WOOD  
 R.C. RYALL TEMP. 55° TOWNSHIP NORTHWOOD  
BRUMBAUGH  
GLASS, CANTERBURY, HUSS SECTION 33  
 T 8 N R 12 E

TYPE MONUMENT P.K./WASHER  
 ON SURFACE - ~~BELOW~~ ON  
 LEFT - ☉ PAV'T - RIGHT ON  
28' TO LT EDGE PAVEMENT  
 S.L.M. 252+09  
 Grid: Northing: - Easting: -



RECORD:  
 FD P.K./WASHER  
 4/21/03, MB  
 SET MAG/WASHER  
 5/5/04, MB



# O.D.O.T. DISTRICT 2 SURVEY OFFICE

PERSONNEL

REFERENCE NO. 3-A

SHEET 14 OF 15

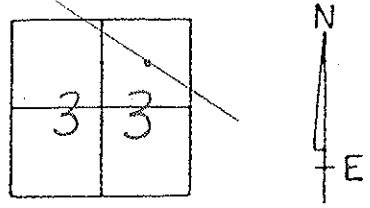
NOTES BARNHISEL  
 H.C. BARNHISEL  
 R.C. RYALL  
BRUMBAUGH  
GLASS

DATE 4-21-03  
 WEATHER CLOUDY  
 TEMP. +55°

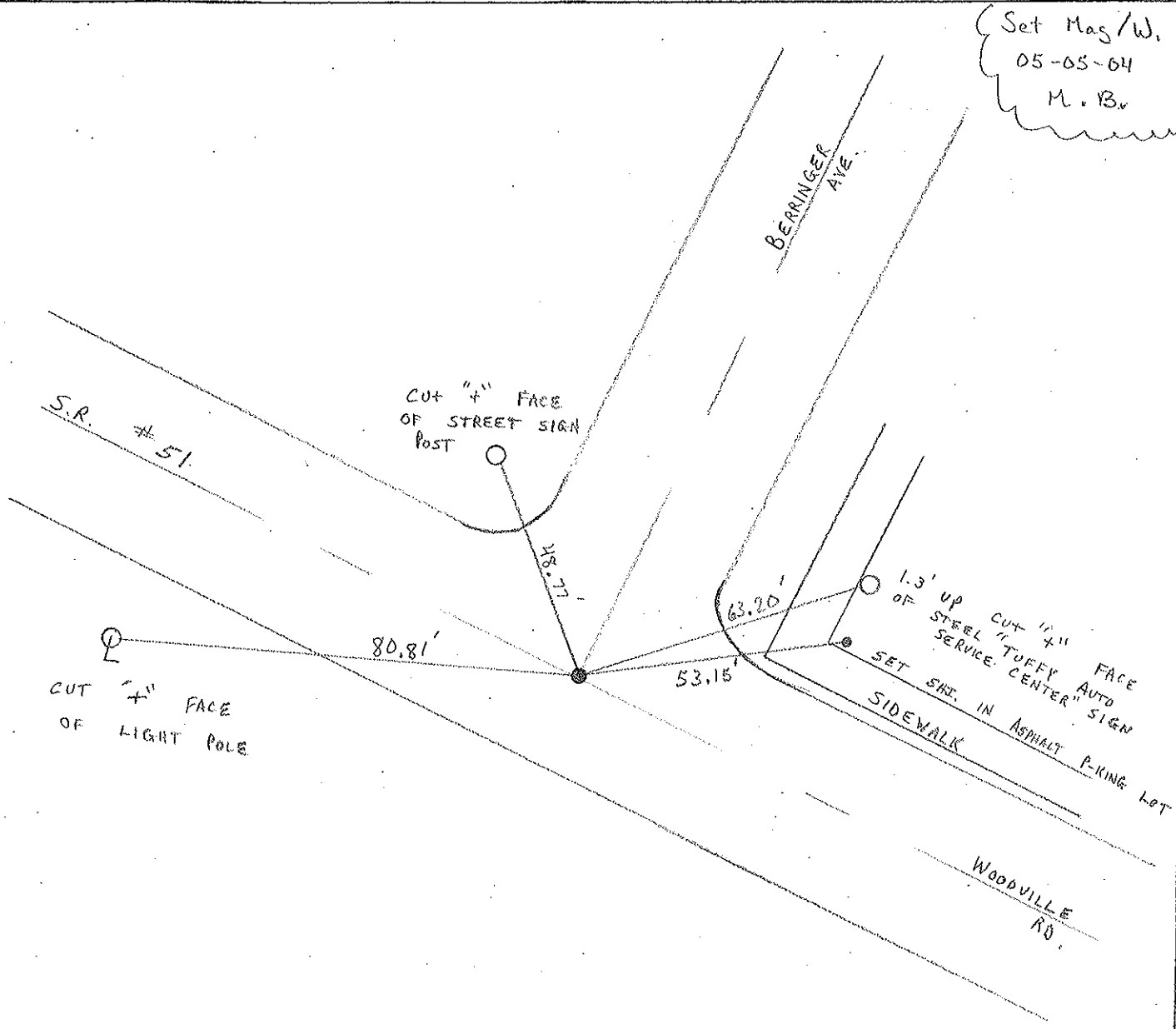
ROUTE S.R. # 51  
 COUNTY Wood  
 TOWNSHIP \_\_\_\_\_  
 SECTION 33  
T 8 N R 12 E

DRAWN: CANTERBURY / HUSS

TYPE MONUMENT P.K. + WASHER  
 ON SURFACE - BELOW ON SURFACE  
 LEFT - ℄ PAV'T. - RIGHT ON ℄  
Z8 TO LT. EDGE PAVEMENT  
 S.L.M. 252 + 09



Set Mag/W.  
05-05-04  
M.B.



O.D.O.T. DISTRICT 2 SURVEY OFFICE

PERSONNEL

REFERENCE NO. 3-A

SHEET 14 OF 15

NOTES R. Cheney

H.C. R. BARBOUR

R.C. J. Rippe

R. Geyman

DATE 11-6-91

WEATHER Cloudy

TEMP. 32°

ROUTE 51

COUNTY Wood

TOWNSHIP \_\_\_\_\_

SECTION 33

T 8 N R 12 E

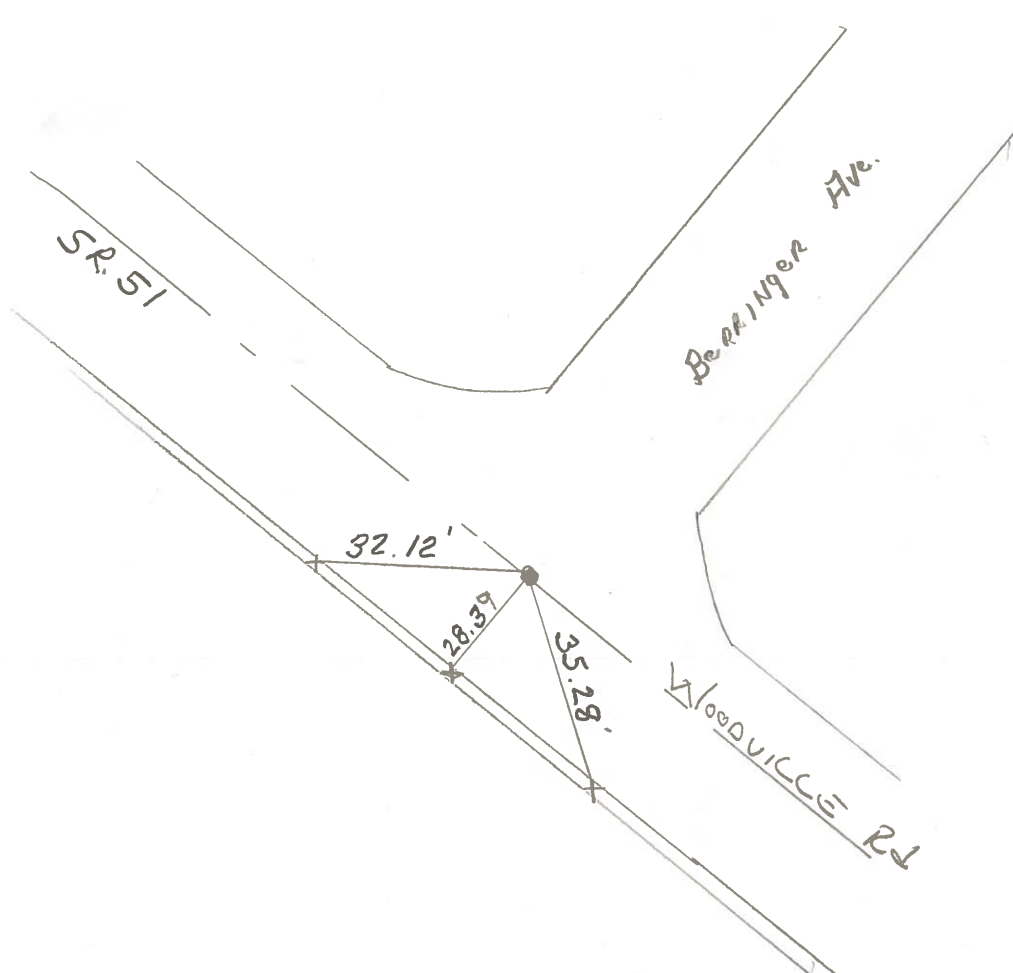
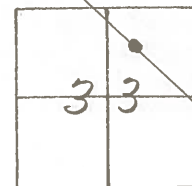
TYPE MONUMENT P.K. & Washer

~~ON SURFACE - BELOW~~ P.K.

~~LEFT - & PAV'T. - RIGHT~~ YES

28' TO LT. EDGE PAVEMENT

S.L.M. 252+09



County WOOD S.R. 51

Date 3-31-77

Township NORTHWOOD, O.

Weather CLOUDY

Section 33

Temp. 45°

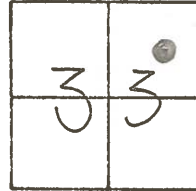
T&N, RIZE

Personnel BURNSIDE

SMITH

BOWERS

MEAD



# 3-A

