

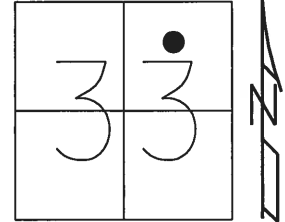
O.D.O.T. DISTRICT 2 SURVEY OFFICE (USE ONLY)

PERSONNEL _____ REFERENCE NO. 3 SHEET 2 OF 13

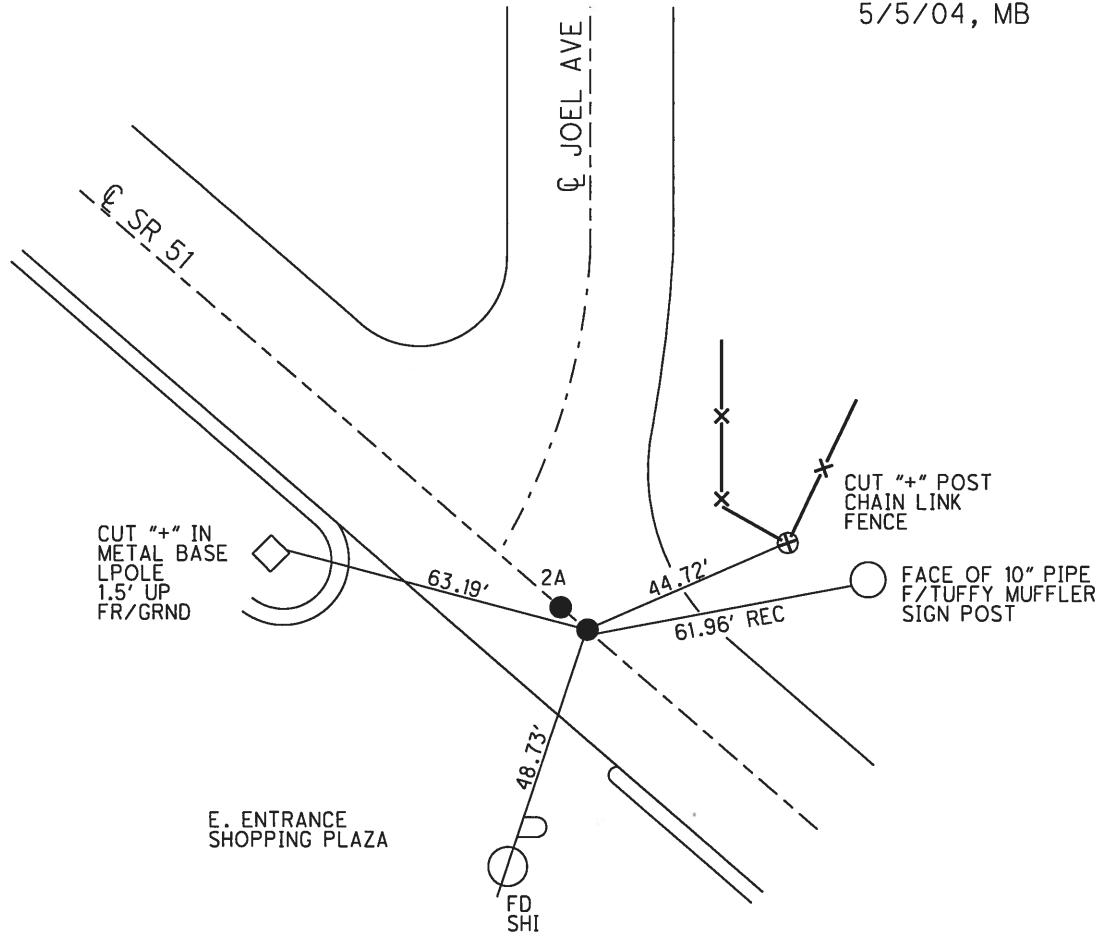
NOTES BARNHEISEL DATE 4/21/03 ROUTE SR 51
 H.C. BARNHEISEL WEATHER CLOUDY COUNTY WOOD
 R.C. RYALL TEMP. 55° TOWNSHIP NORTHWOOD
BRUMBAUGH SECTION 33
GLASS, CANTERBURY, HUSS T 8 N R 12 E

TYPE MONUMENT P.K./WASHER
 ON SURFACE - ~~BELOW~~ ON _____
 LEFT - ☉ PAV'T - RIGHT ON _____
28' TO LT EDGE PAVEMENT
 S.L.M. 253+71

Grid: Northing: _____ Easting: _____



RECORD:
 FD BRASS MON
 3" DOWN
 4/21/03, MB
 SET MAG/WASHER
 5/5/04, MB



DIST. 2A-3= 2.94' REC

O.D.O.T. DISTRICT 2 SURVEY OFFICE

PERSONNEL

REFERENCE NO. 3

SHEET 15 OF 15

NOTES BARNHISEL

H.C. BARNHISEL

R.C. RYALL

BRUMBAUGH

GLASS

DRAWN: CANTERBURY / HUSS

DATE 4-21-03

WEATHER CLOUDY

TEMP. +55°

ROUTE 51

COUNTY WOOD

TOWNSHIP NORTHWOOD

SECTION 33

T 8 N R 12 E

TYPE MONUMENT P.K. + WASHER

BRASS MON

ON SURFACE - BELOW SURFACE

3" DOWN

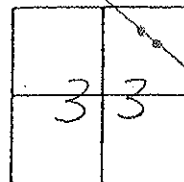
LEFT - PAV'T. - RIGHT ON E

ON E

28' TO S. EDGE PAVEMENT

S.L.M. 253 + 71

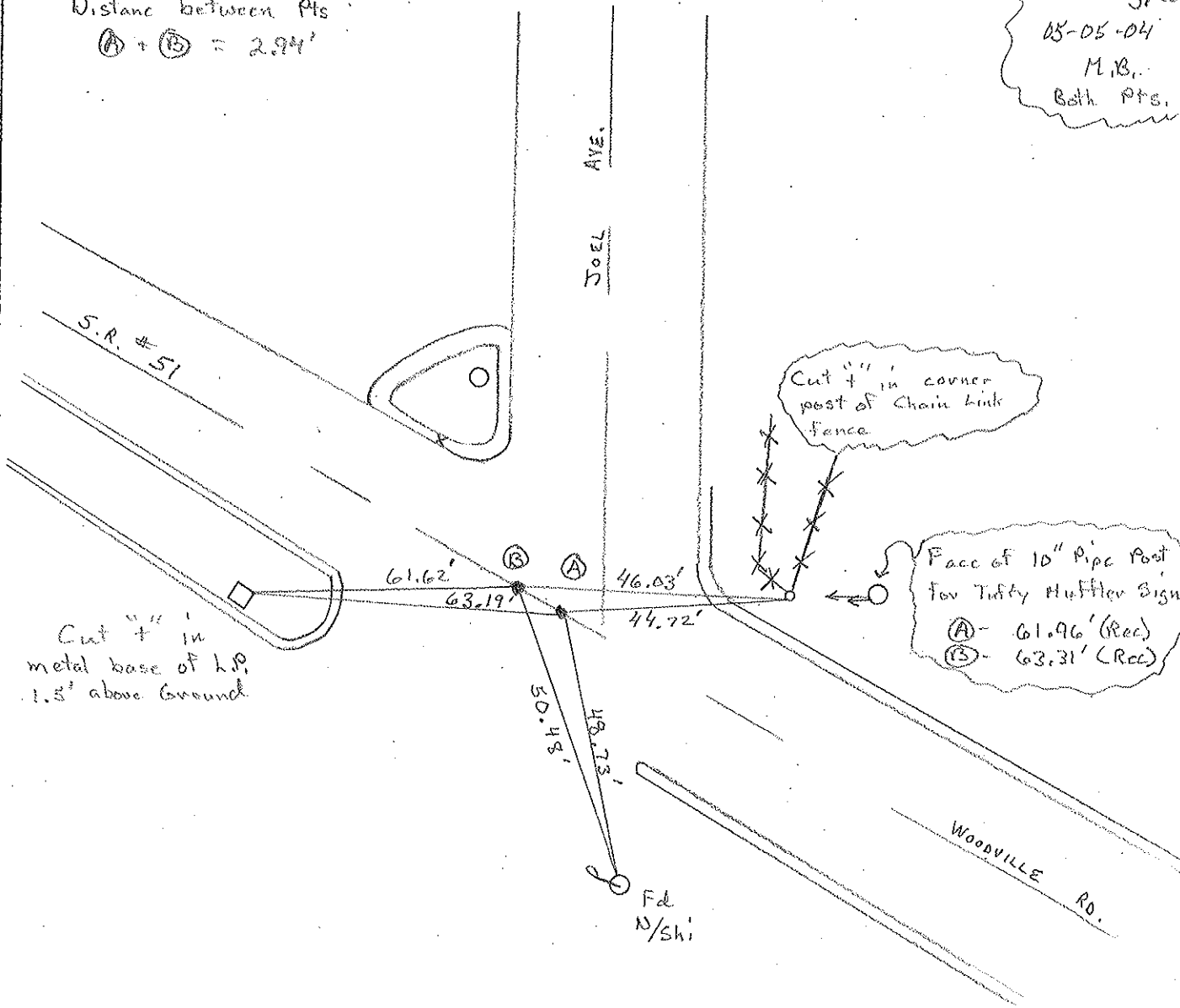
253 + 74



Distance between Pts

$(A) + (B) = 2.94'$

Set Nag/w
05-05-04
M.B.
Both Pts.



Face of 10" Pipe Post for Tuffy Huffer Sign
(A) - 61.96' (Rec)
(B) - 63.31' (Rec)

O.D.O.T. DISTRICT 2 SURVEY OFFICE

PERSONNEL

REFERENCE NO. 3

SHEET 15 OF 15

NOTES R. Cheney

H.C. R. BARBOUR

R.C. J. Ripple

R. Geyman

DATE 11-6-91

WEATHER Cloudy

TEMP. 32°

ROUTE 51

COUNTY Wood

TOWNSHIP _____

SECTION 33

T 8 N R 12 E

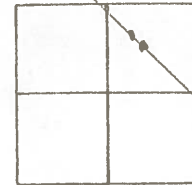
TYPE MONUMENT P.K. Washer

ON SURFACE - BELOW P.K.

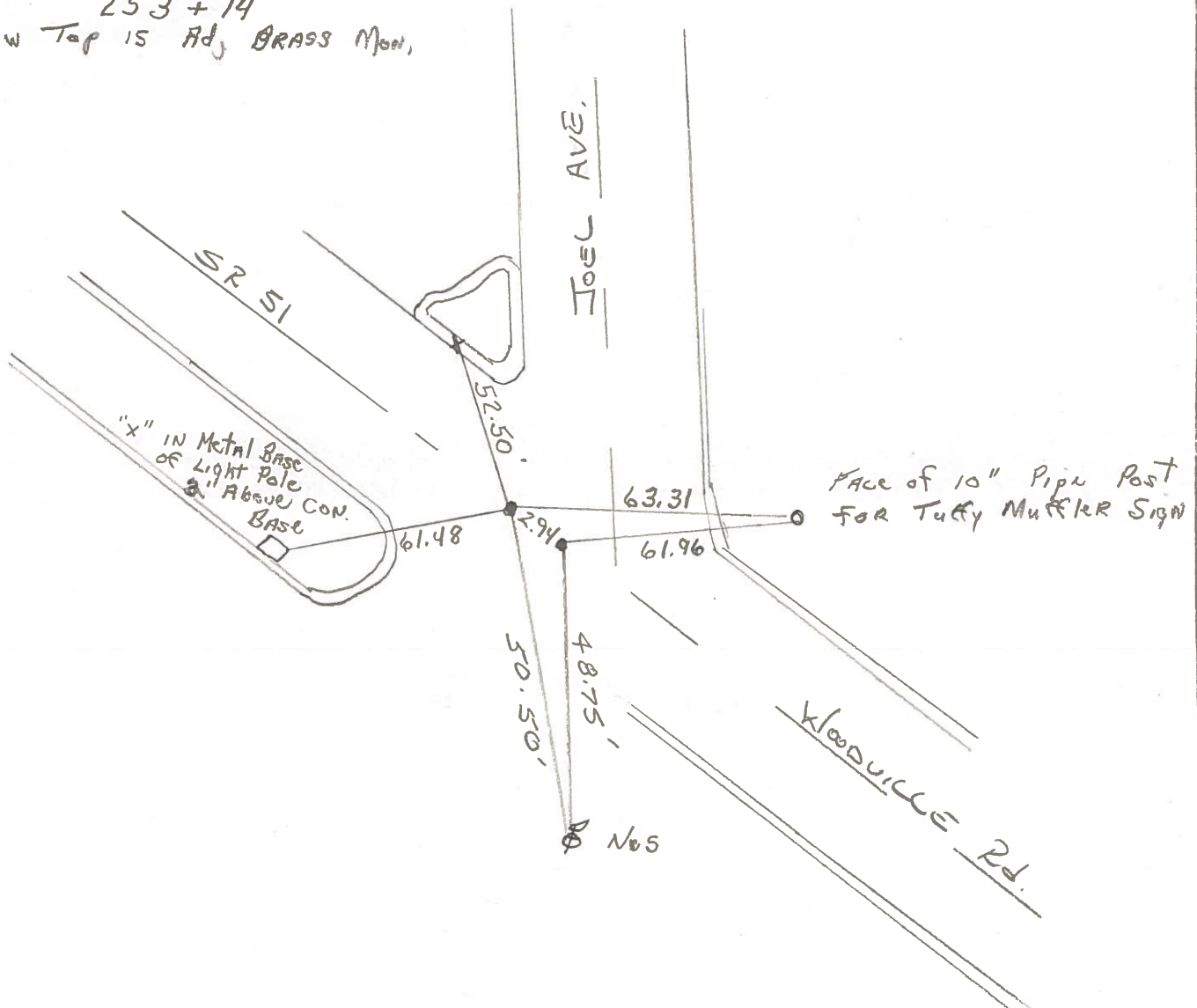
~~LEFT~~ - & PAV'T. - ~~RIGHT~~ YES

28 TO S EDGE PAVEMENT

S.L.M. 253 + 71



253 + 74
Below Top 15 Ad, BRASS Mon,



County WOOD S.R. 51

Date 3-31-77

Township NORTHWOOD, 7

Weather CLOUDY

Section 33

Temp. 45°

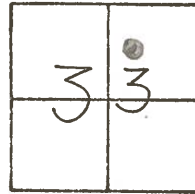
T&N, RIZE

Personnel BURNSIDE

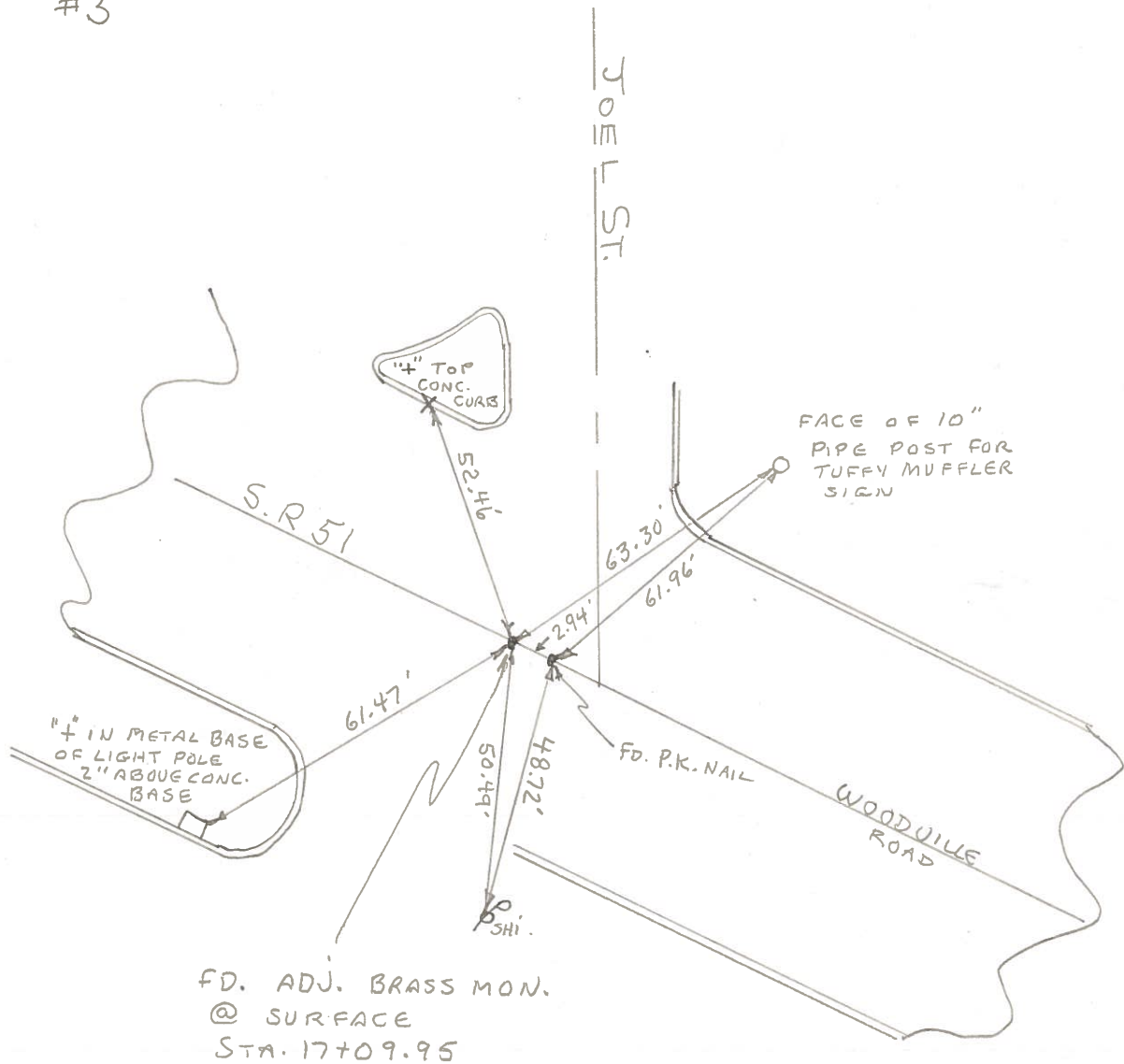
SMITH

BOWERS

HEAD



#3



PERSONNEL TITLE PERSONNEL TITLE

COUNTY Wood

DATE 7-14-50

S. R. #120 51

Schneider-9-5-61

WEATHER

SEC.

TEMP.

DESCRIPTION Woodville Rd.

JOB NO.

LEFT

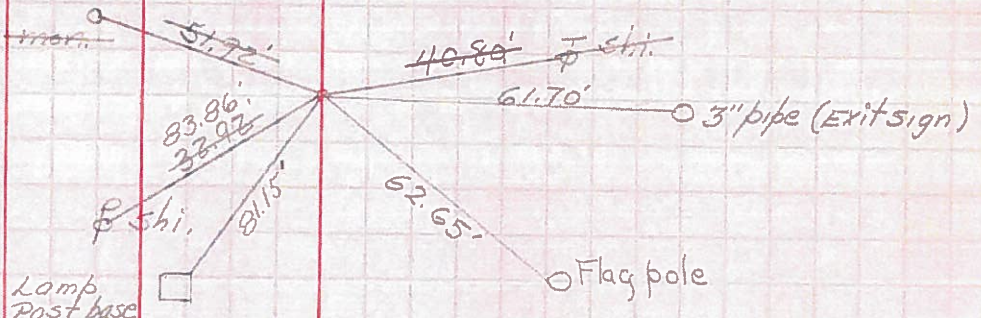
CENTER LINE

RIGHT

(Measurements not plumb)

Sta. 11+22.12
Curtice Rd.
Tack fd. P.I. (2)
BRASS MON.

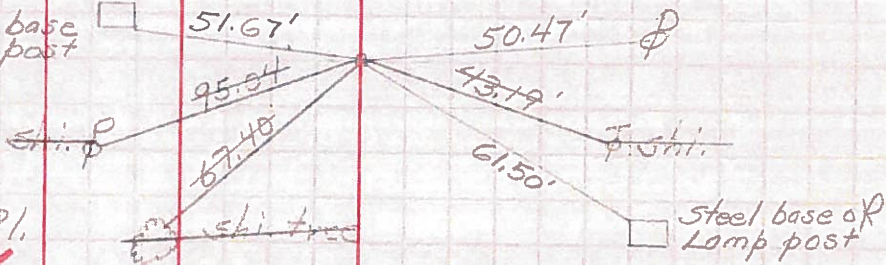
#287



Sta. 17+29.13
Joel Ave.
Masonry tack on P.I.
BRASS MON.

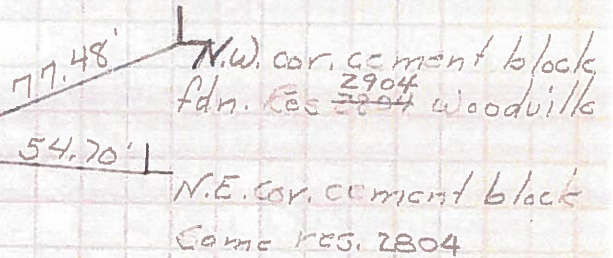
#288

(3)



Sta. 18+74.44
Leland Ave.
Set P.R. Spk.
S.W. cor. brick fdn. Res. 2801 Woodville

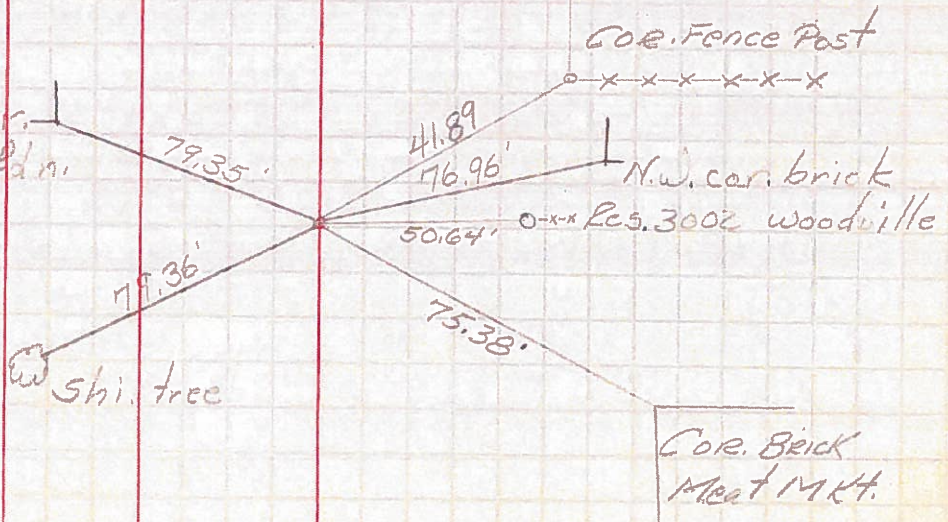
S.W. cor. brick fdn. Res. 2801 Woodville



Sta. 21+30.42
Orchard Ave.
Set P.R. Spk.
S.W. cor. brick fdn. Res.

#881

(4)



PERSONNEL TITLE PERSONNEL TITLE

COUNTY Wood DATE 8-20-50

S. R. #120 S.R.#51 WEATHER

SEC. R-1 & R-2 TEMP.

DESCRIPTION LEFT CENTER LINE RIGHT JOB NO.

Sta. 0+00
Wood & Lucas rd. line

① #286

E.N.E. sh. in 14.5" p 29.59'
Shiner in tower P.L. 37.13
E.N.E. in. 45.70'
S. + mon. 45.67
in cable pole 42.91'

Sta. 1+22.20
Curtice Rd.

② #287

N. to shiner in P.P. 32.94'
E.S.E. to shiner in cable 90.44'
S. to shiner in cable p 40.22'
E.N.E. B.M. mon. 51.95'

Sta. 1+09.95
Joel Ave.

③ #288

E. to shiner in P.P. 21.40'
S.S.E. to shiner in P.P. 84.31'
W. to shiner in P.P. 43.18'
E.S.E. to shiner in P.P. 99.12'

Sta. 3+00.15
P.L. station

#289

N.W. to shiner in P.P. 97.88
E.N.E. to shiner in P.P. 28.26
S.S.W. to shiner in P.P. 40.82
E.S.E. to shiner in P.P. 107.98

Sta. 4+78.25
P.L.

#290

E. to shiner in P.P. 36.47
S.S.E. to shiner in P.P. 65.90'
W. to shiner in P.P. 68.10'
N.W. to shiner in P.P. 81.90'