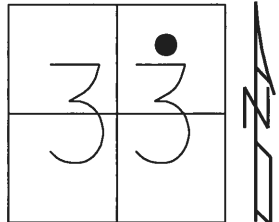


O.D.O.T. DISTRICT 2 SURVEY OFFICE (USE ONLY)

PERSONNEL \_\_\_\_\_ REFERENCE NO. 2 A SHEET 1 OF 13

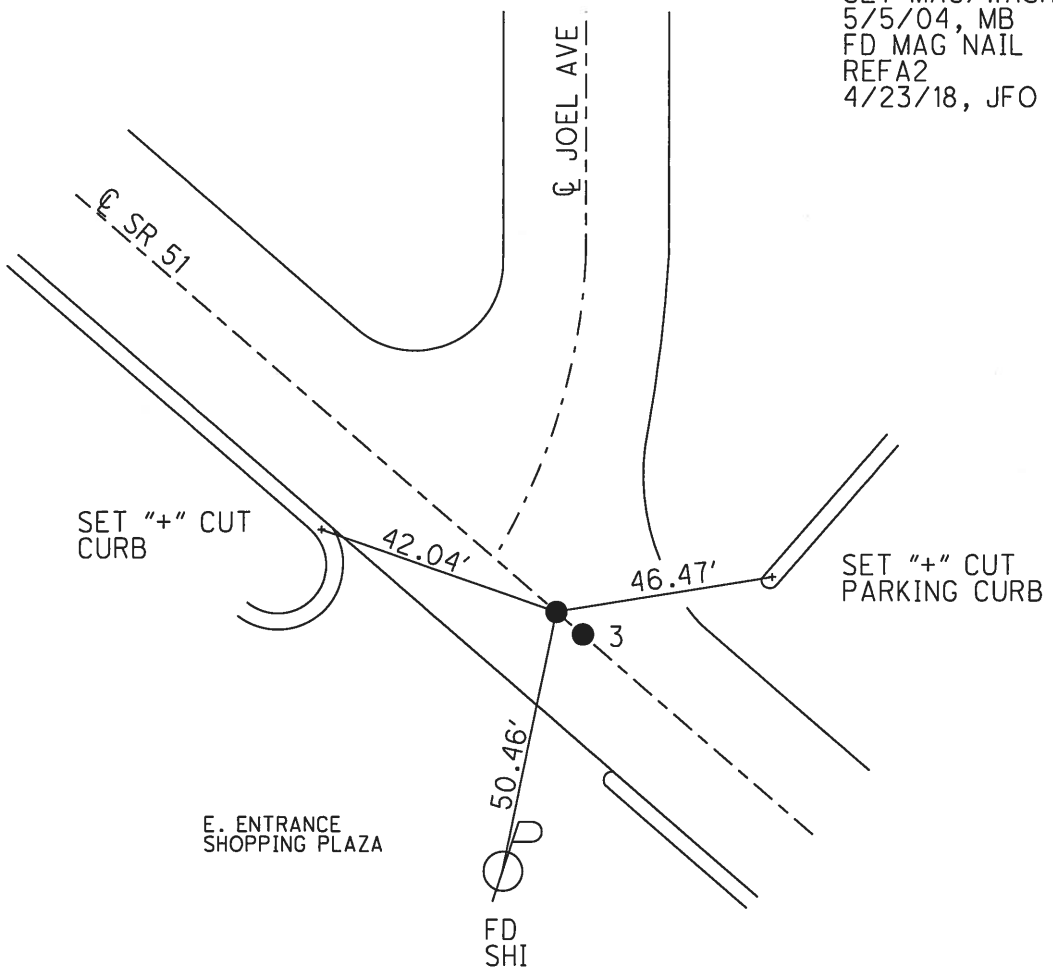
NOTES RHOADES DATE 4/23/18 ROUTE SR 51  
 H.C. O'DONNELL WEATHER FAIR COUNTY WOOD  
 R.C. RHOADES TEMP. 46° TOWNSHIP NORTHWOOD  
 \_\_\_\_\_ SECTION 33  
 \_\_\_\_\_ T 8 N R 12 E

TYPE MONUMENT MAG NAIL  
 ON SURFACE - ~~BELOW~~ ON \_\_\_\_\_  
 LEFT - ☉ PAV'T - RIGHT ON \_\_\_\_\_  
 - TO - EDGE PAVEMENT  
 S.L.M. 253+74



Grid: Northing: 711426.183 Easting: 1699331.869

RECORD:  
 FD BRASS MON  
 3" DOWN  
 4/21/03, MB  
 SET MAG/WASHER  
 5/5/04, MB  
 FD MAG NAIL  
 REFA2  
 4/23/18, JFO



DIST. 2A-3= 2.94' REC

# O.D.O.T. DISTRICT 2 SURVEY OFFICE

PERSONNEL

REFERENCE NO. 3

SHEET 15 OF 15

NOTES BARNHISEL

H.C. BARNHISEL

R.C. RYALL

BRUMBAUGH

GLASS

DRAWN: CANTERBURY / HUSS

DATE 4-21-03

WEATHER CLOUDY

TEMP. +55°

ROUTE 51

COUNTY WOOD

TOWNSHIP NORTHWOOD

SECTION 33

T 8 N R 12 E

TYPE MONUMENT P.K. + WASHER

BRASS MON

ON SURFACE - BELOW SURFACE

3" DOWN

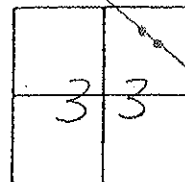
LEFT - PAV'T. - RIGHT ON E

ON E

28' TO S. EDGE PAVEMENT

S.L.M. 253 + 71

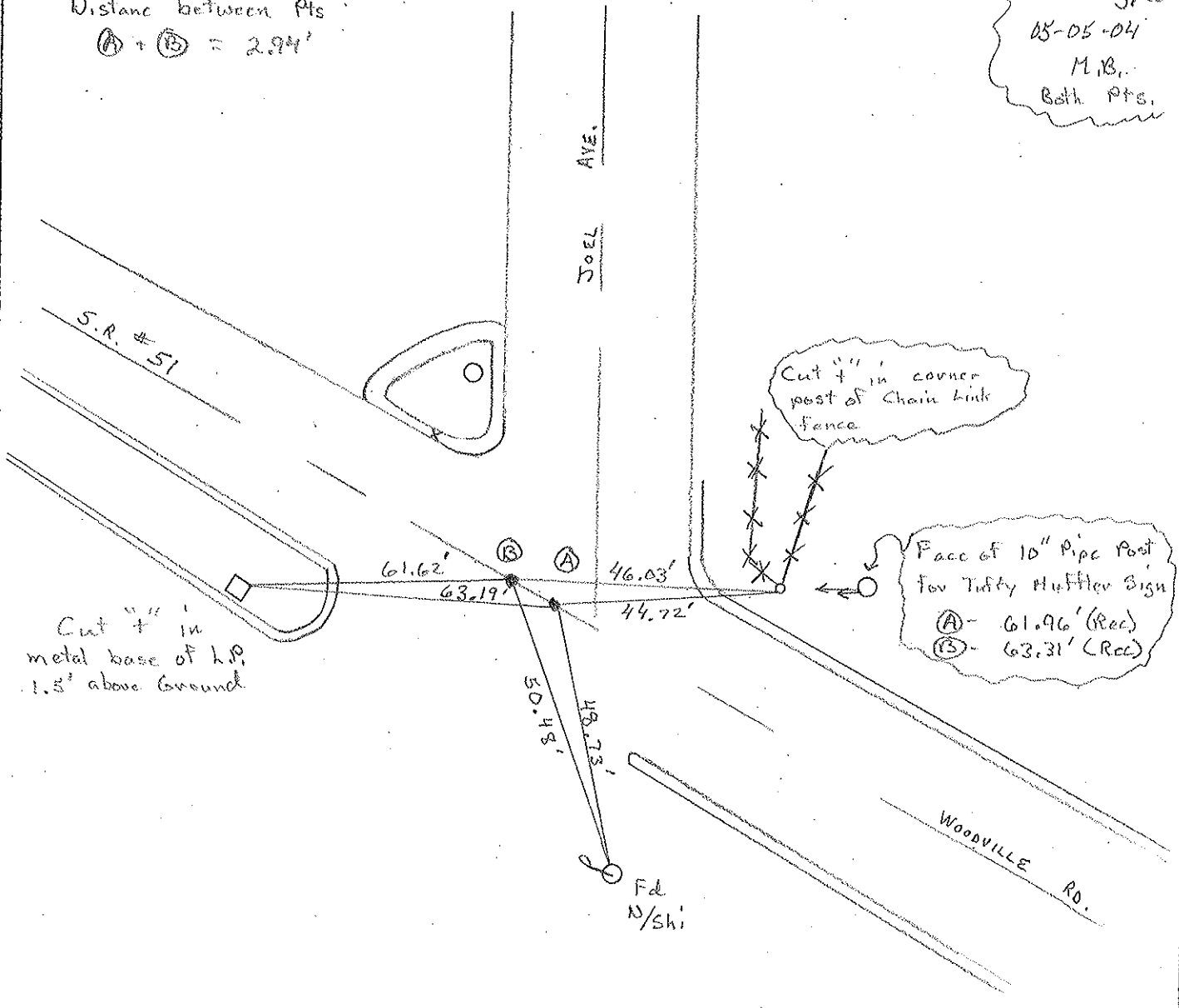
253 + 74



Distance between Pts

$(A) + (B) = 2.94'$

Set Nag/w  
05-05-04  
M.B.  
Both Pts.



# O.D.O.T. DISTRICT 2 SURVEY OFFICE

PERSONNEL

REFERENCE NO. 3

SHEET 15 OF 15

NOTES BARNHISEL

H.C. BARNHISEL

R.C. RYALL

BRUMBAUGH

GLASS

DRAWN: CANTERBURY / HUSS

DATE 4-21-03

WEATHER CLOUDY

TEMP. +55°

ROUTE 51

COUNTY WOOD

TOWNSHIP NORTHWOOD

SECTION 33

T. 8 N R. 12 E

TYPE MONUMENT P.K. + WASHER

BRASS MON

ON SURFACE - BELOW SURFACE

3" DOWN

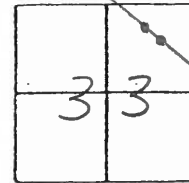
LEFT - & PAV'T. - RIGHT ON &

ON &

28' TO S. EDGE PAVEMENT

S.L.M. 253 + 71

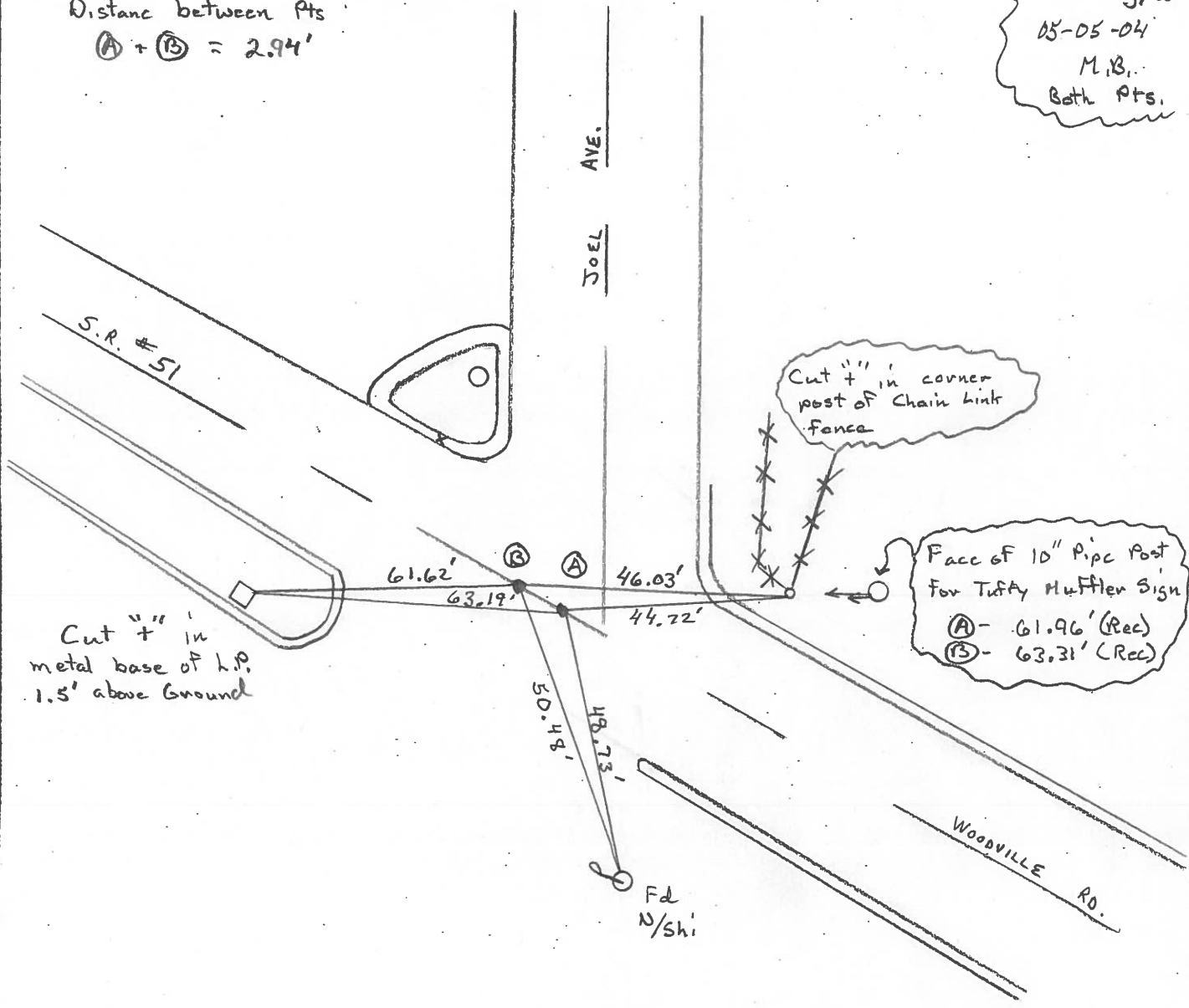
253 + 74



Distance between Pts

$(A) + (B) = 2.94'$

Set Mag/W  
05-05-04  
M.B.  
Both Pts.



Face of 10" Pipe Post  
for Tuffy Muffler Sign  
(A) - 61.96' (Rec)  
(B) - 63.31' (Rec)

O.D.O.T. DISTRICT 2 SURVEY OFFICE

PERSONNEL

REFERENCE NO. 3

SHEET 15 OF 15

NOTES R. Cheney

H.C. R. BARBOUR

R.C. J. Ripple

R. Geyman

DATE 11-6-91

WEATHER Cloudy

TEMP. 32°

ROUTE 51

COUNTY Wood

TOWNSHIP \_\_\_\_\_

SECTION 33

T 8 N R 12 E

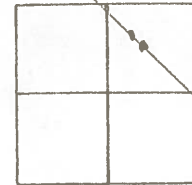
TYPE MONUMENT P.K. Washer

ON SURFACE - BELOW P.K.

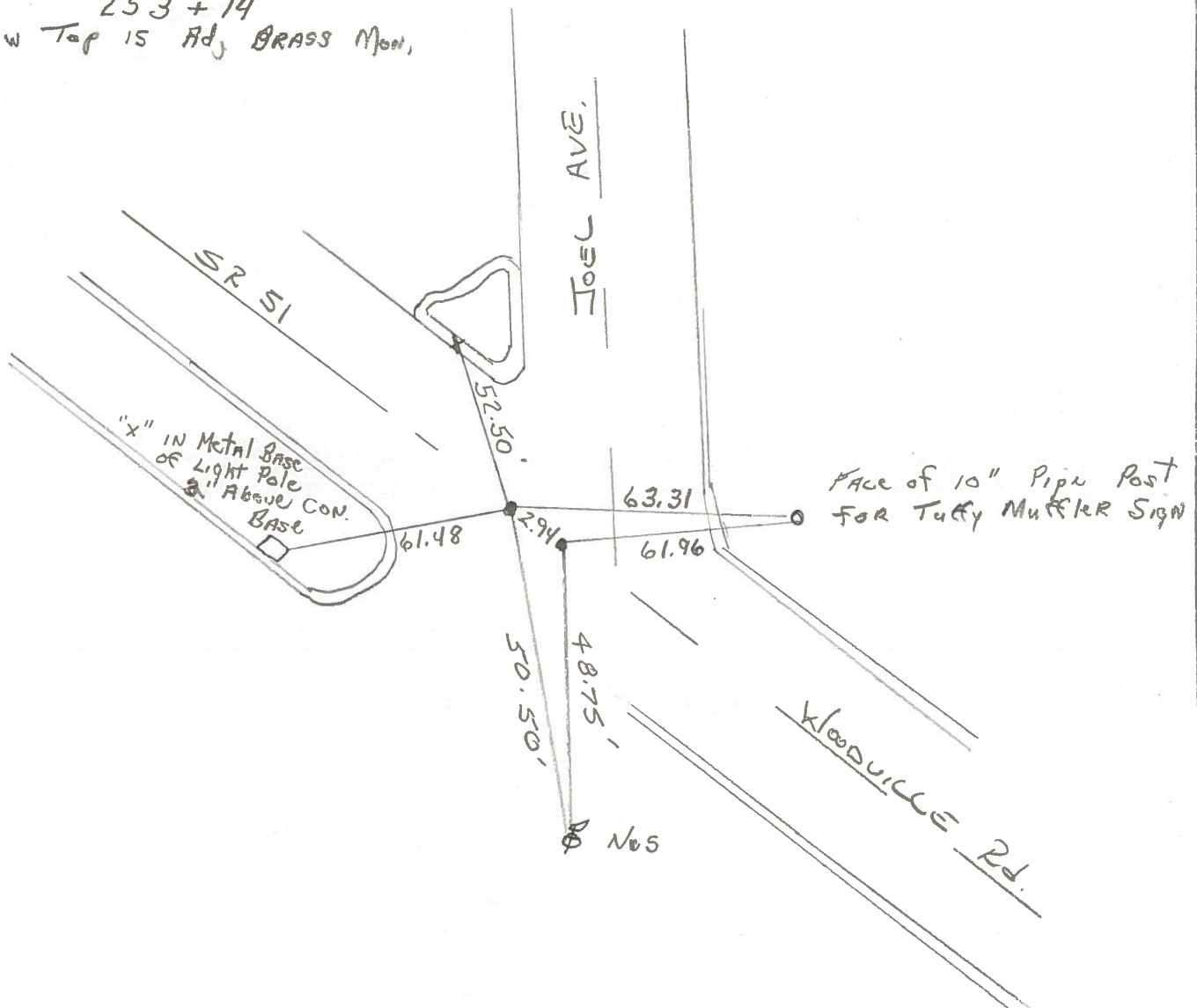
~~LEFT~~ - & PAV'T. - ~~RIGHT~~ YES

28 TO S EDGE PAVEMENT

S.L.M. 253 + 71



253 + 74  
Below Top 15 Ad, BRASS Mon,



County WOOD S.R. 51

Date 3-31-77

Township NORTHWOOD, 7

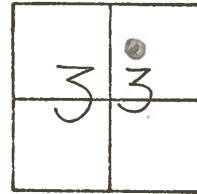
Weather CLOUDY

Section 33

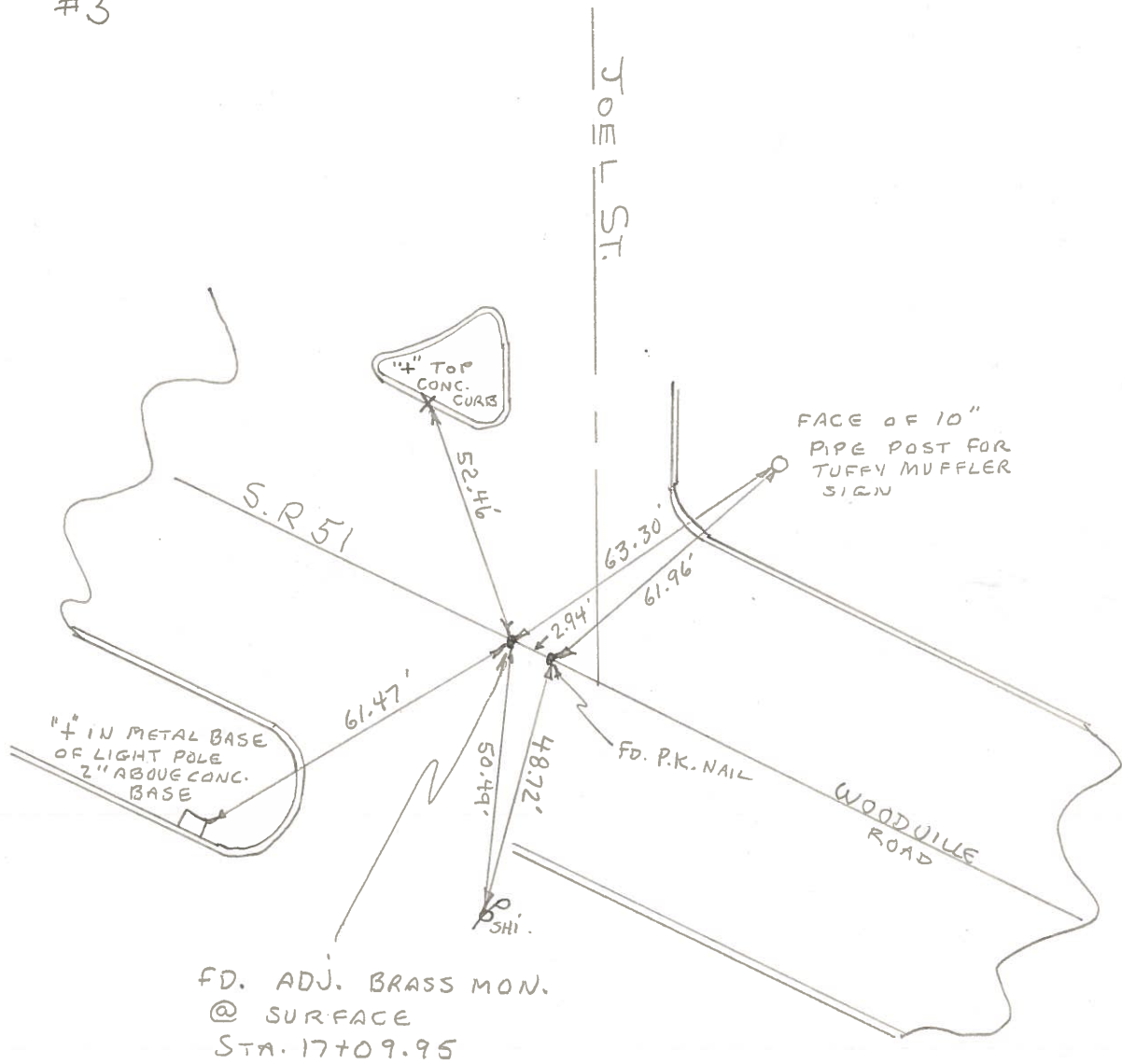
Temp. 45°

T&N, RIZE

Personnel BURNSIDE



#3





PERSONNEL TITLE PERSONNEL TITLE

COUNTY Wood

DATE 7-14-50

S. R. #120 51

Schneider-9-5-61

WEATHER

SEC.

TEMP.

DESCRIPTION Woodville Rd.

JOB NO.

LEFT

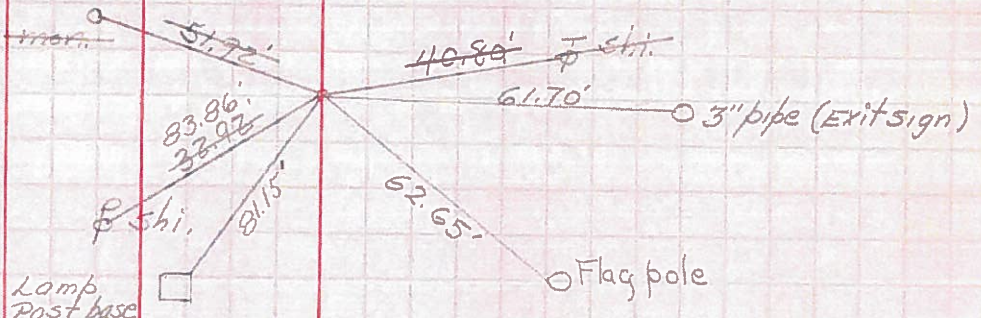
CENTER LINE

RIGHT

(Measurements not plumb)

Sta. 11+22.12  
Curtice Rd.  
Tack fd. P.I. (2)  
BRASS MON.

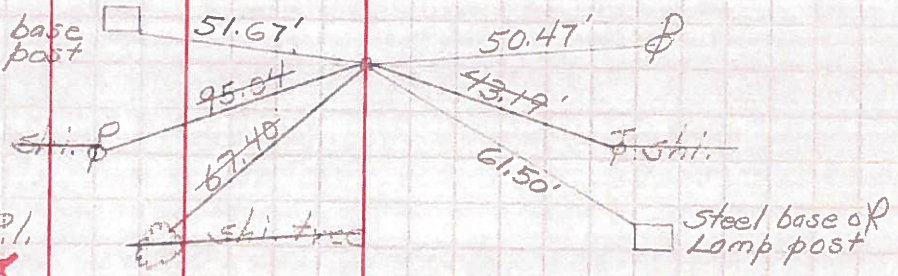
#287



Sta. 17+29.13  
Joel Ave.  
Masonry tack on P.I.  
BRASS MON.

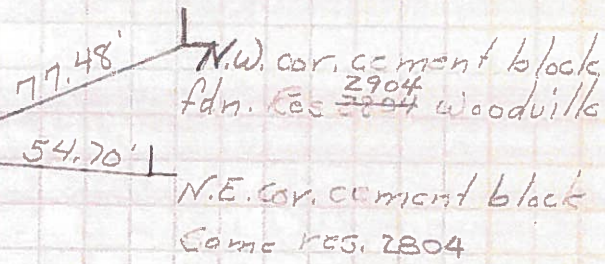
#288

(3)



Sta. 18+74.44  
Leland Ave.  
Set P.R. Spk.  
S.W. cor. brick fdn. Res. 2801 Woodville

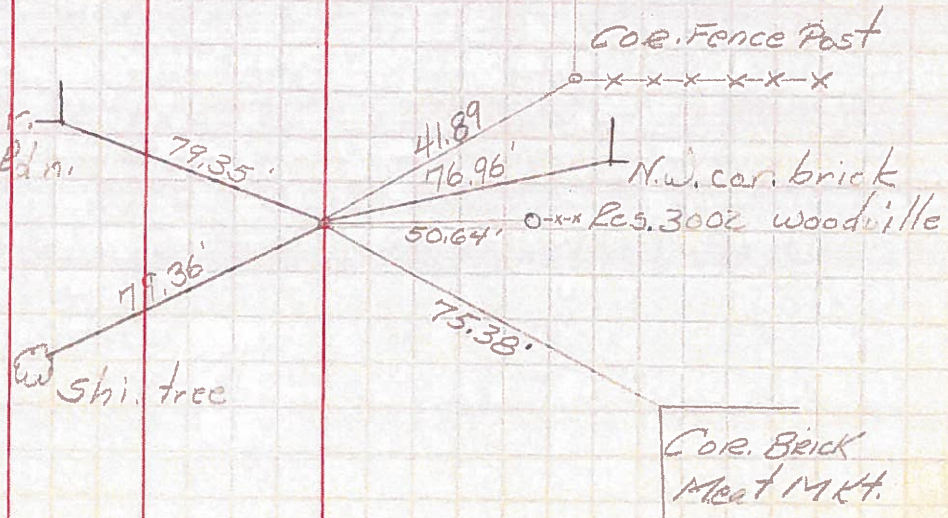
S.W. cor. brick fdn. Res. 2801 Woodville



Sta. 21+30.42  
Orchard Ave.  
Set P.R. Spk.

#881

(4)





PERSONNEL TITLE PERSONNEL TITLE

COUNTY Wood DATE 8-20-50

S. R. #120 S.R.#51 WEATHER

SEC. R-1 & R-2 TEMP.

DESCRIPTION LEFT CENTER LINE RIGHT JOB NO.

Sta. 0+00  
Wood & Lucas rd. line

① #286

E.N.E. sh. in 14.5" p 29.59'  
Shiner in tower P.L. 37.13  
E.N.E. in. 45.70'  
S. + mon. 45.67  
in cable pole 42.91'

Sta. 1+22.20  
Curtice Rd.

② #287

N. to shiner in P.P. 32.94'  
E.S.E. to shiner in cable 90.44'  
S. to shiner in cable p 40.22'  
E.N.E. B.M. mon. 51.95'

Sta. 1+09.95  
Joel Ave.

③ #288

E. to shiner in P.P. 21.40'  
S.S.E. to shiner in P.P. 84.31'  
W. to shiner in P.P. 43.18'  
E.S.E. to shiner in P.P. 99.12'

Sta. 3+00.15  
P.L. station

#289

N.W. to shiner in P.P. 97.88  
E.N.E. to shiner in P.P. 28.26  
S.S.W. to shiner in P.P. 40.82  
E.S.E. to shiner in P.P. 107.98

Sta. 4+78.25  
P.L.

#290

E. to shiner in P.P. 36.47  
S.S.E. to shiner in P.P. 65.90'  
W. to shiner in P.P. 68.10'  
N.W. to shiner in P.P. 81.90'