

O.D.O.T. DISTRICT 2 SURVEY OFFICE (USE ONLY)

PERSONNEL _____

REFERENCE NO. 2

SHEET 2 OF 22

NOTES BURNSIDE

DATE 3/31/77

ROUTE SR 51

H.C. SMITH

WEATHER CLOUDY

COUNTY WOOD

R.C. BOWERS

TEMP. 45°

TOWNSHIP NORTHWOOD

MEAD

SECTION 33

DWG BY NIESE

PID _____

T 8 N R 12 E

TYPE MONUMENT ADJ. BRASS MON

ON SURFACE - ~~BELOW~~ ON

OFFSET Q PAVEMENT ON LT : RT

- TO - EDGE PAVEMENT

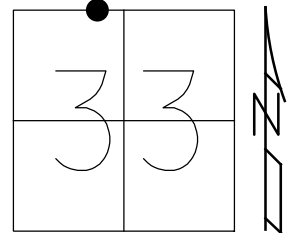
STATION: 258+88

HORZ.DATUM: _____

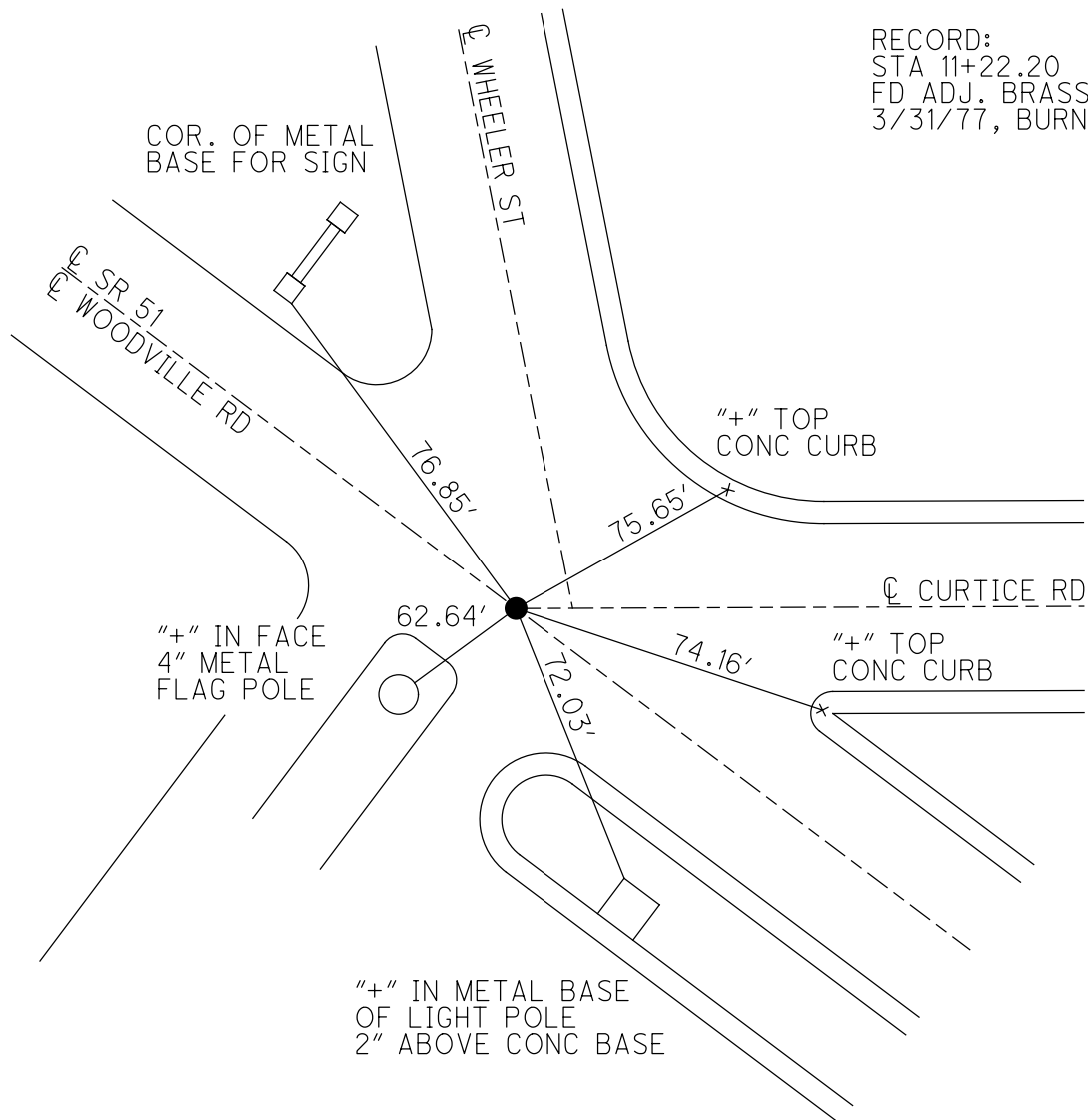
GEOID: _____

GRID: NORTHING: _____

EASTING: _____

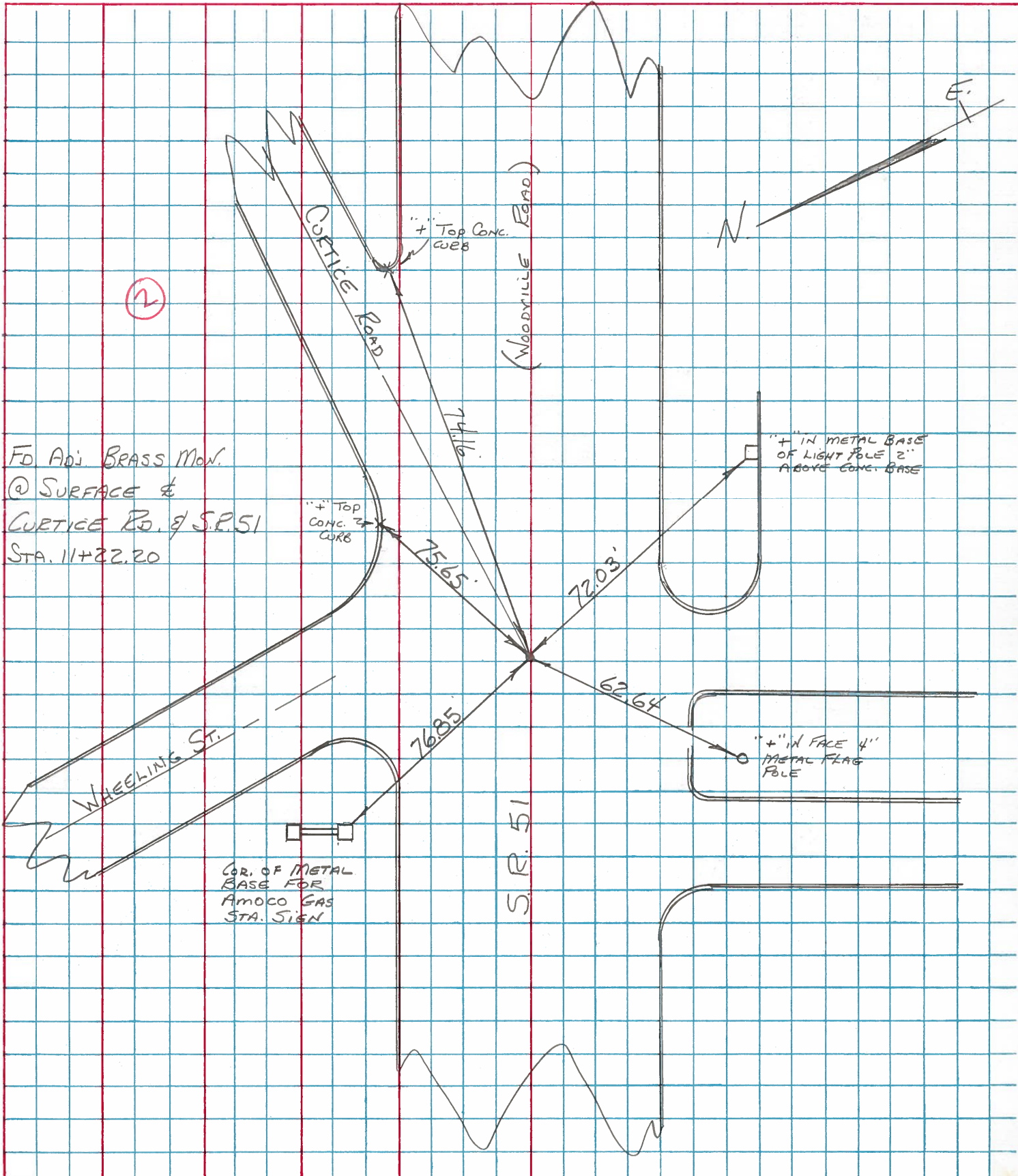


RECORD:
STA 11+22.20
FD ADJ. BRASS MON
3/31/77, BURNSIDE



PERSONNEL	TITLE	PERSONNEL	TITLE	COUNTY	DATE
BURNSIDE				Wood	3-31-77
SMITH				S. R. 51	WEATHER Cloudy
BOWERS				SEC. Woodville Rd.	TEMP. +45°
MEAD					

DESCRIPTION & CONTROL POINTS LEFT CENTER LINE RIGHT JOB NO.



PERSONNEL TITLE PERSONNEL TITLE

COUNTY Wood DATE 7-14-50

S. R. #120 51 WEATHER Schneider-9-5-61

SEC. TEMP.

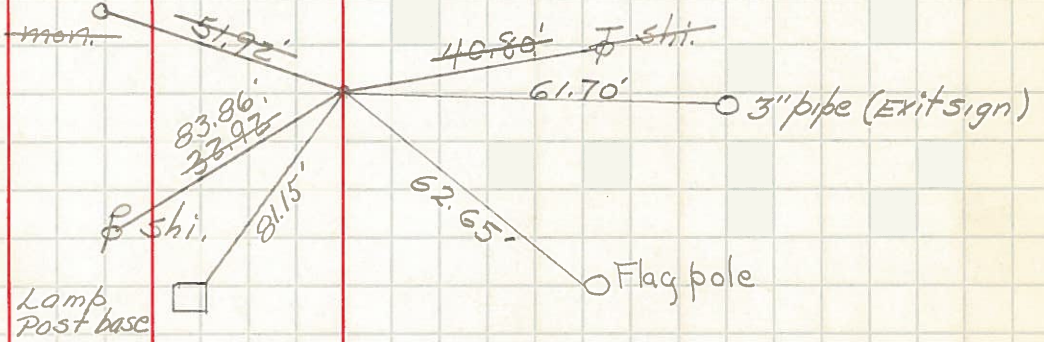
DESCRIPTION Woodville Rd. JOB NO.

LEFT CENTER LINE RIGHT

(Measurements not plumb)

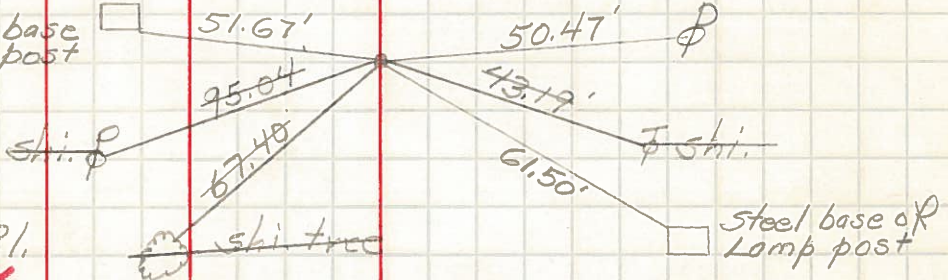
Sta. 11+22.12
Curtice Rd.
Tack fd. P.I.
BRASS MON.

(2)
#287

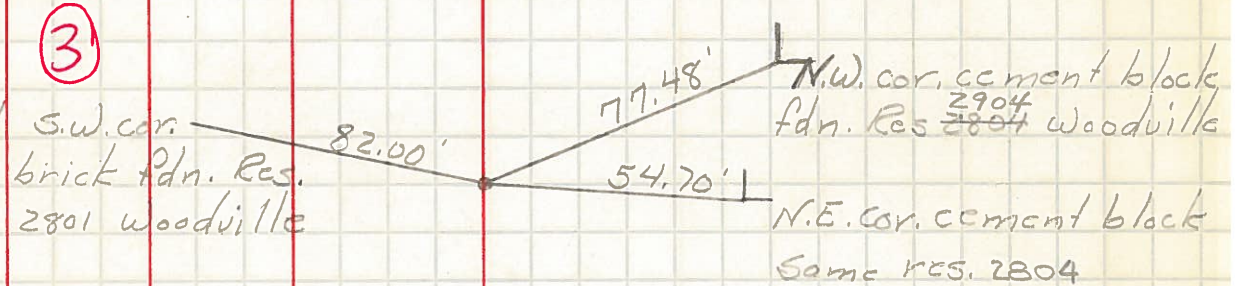


Sta. 17+29.13
Joel Ave.
Masonry tack on P.I.
BRASS MON.

(3)
#288

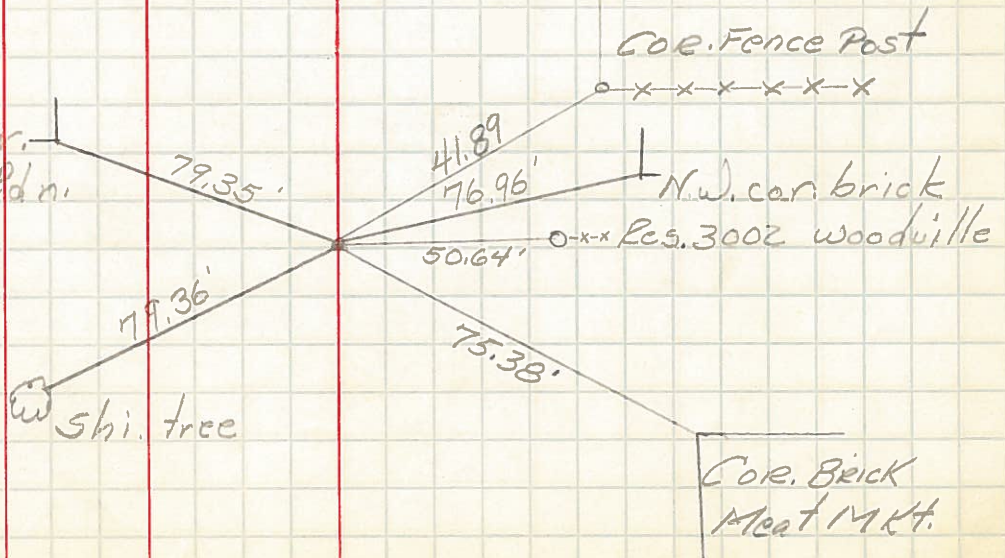


Sta. 18+74.44
Leland Ave.
Set R.R. spk.
S.W. cor. brick Pdn. Res. 2801 woodville



Sta. 21+30.42
Orchard Ave.
Set P.R. Spk.

#881
(4)



PERSONNEL TITLE PERSONNEL TITLE COUNTY Wood DATE 8-20-50
 S. R. #120 S.R.#51 WEATHER
 SEC. B-1 & B-2 TEMP.

DESCRIPTION	LEFT	CENTER LINE	RIGHT	JOB NO.
Sta. 0+00 Wood & Lucas line			E.N.E. sh. in 14 5/8" p Shiner in tower P.L. E.N.E. in S. + mon. in cable pole	29.59' 37.13 45.20' 45.67 42.91'
	(1) #286			
Sta. 11+22.20 Curtice Rd.			N. to shiner in P.P. E.S.E. to shiner in cable S. to shiner in cable p E.N.E. B.M. mon.	32.94' 90.44' 40.22' 51.95'
	(2) #287			
Sta. 17+09.95 Joc / Ave.			E. to shiner in P.P. S.S.E. to shiner in P.P. W. to shiner in P.P. E.S.E. to shiner in P.P.	21.40' 24.31' 43.18' 99.12'
	(3) #288			
Sta. 37+00.15 P.L. station			N.W. to shiner in P.P. E.N.E. to shiner in P.P. S.S.W. to shiner in P.P. E.S.E. to shiner in P.P.	97.88 28.26' 40.82 107.98
	#289			
Sta. 45+78.25 P.L.			E. to shiner in P.P. S.S.E. to shiner in P.P. W. to shiner in P.P. N.W. to shiner in P.P.	36.47 65.90' 58.10' 81.90'
	#290			