

O.D.O.T. DISTRICT 2 SURVEY OFFICE (USE ONLY)

PERSONNEL _____ REFERENCE NO. 1 SHEET 1 OF 22
 NOTES CANTERBURY DATE 5/5/03 ROUTE SR 51
 H.C. BARNHEISEL WEATHER CLOUDY COUNTY WOOD
 R.C. RYALL TEMP. 60° TOWNSHIP NORTHWOOD
BRUMBAUGH/HUSS SECTION 28
 DWG BY NIESE PID _____ T 8 N R 12 E

TYPE MONUMENT BRASS MON

~~ON SURFACE~~ - BELOW 3"

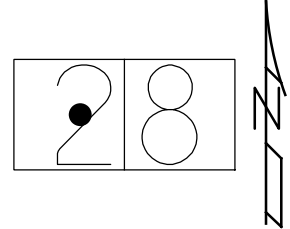
OFFSET \odot PAVEMENT ON LT : RT

28.0' TO LT EDGE PAVEMENT

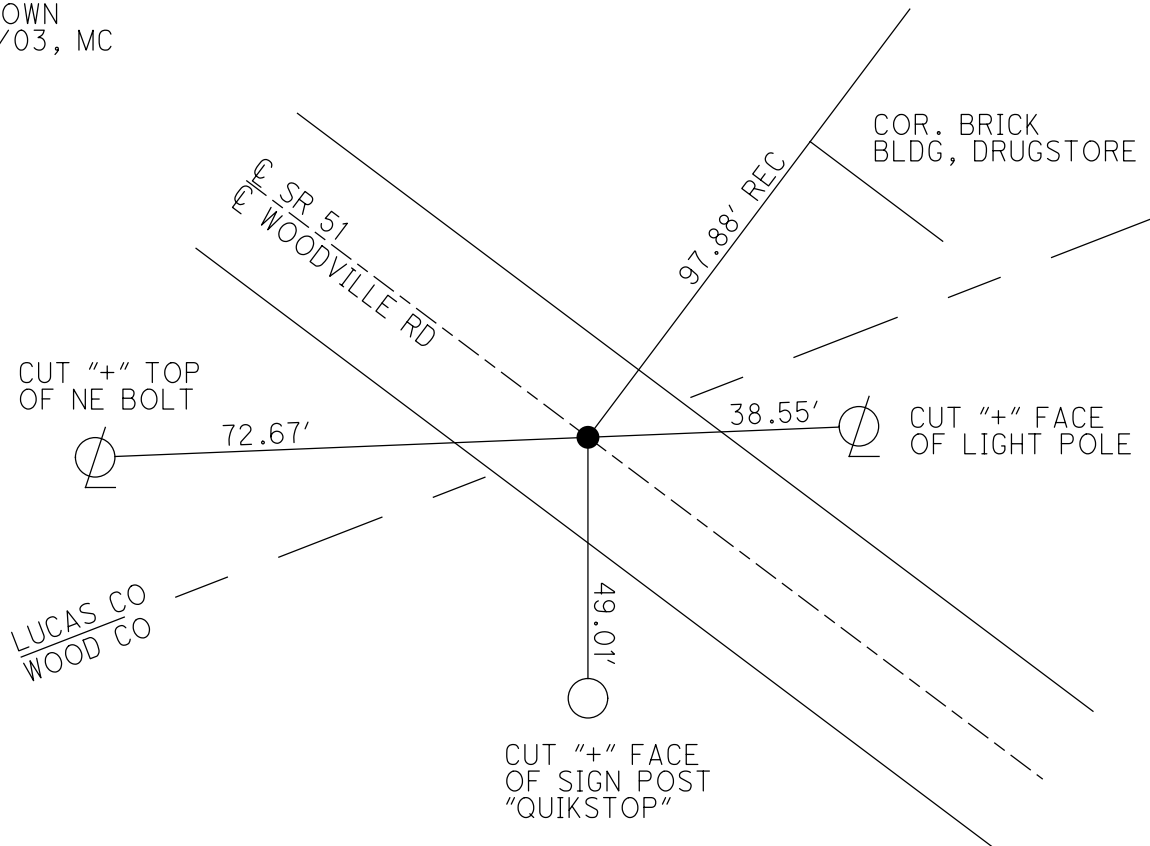
STATION: 270+58

HORZ. DATUM: _____ GEOID: _____

GRID: NORTHING: _____ EASTING: _____



RECORD:
 LUCAS/WOOD CO
 LINE MARKER
 FD BRASS MON
 3" DOWN
 5/5/03, MC



O.D.O.T. DISTRICT 2 SURVEY OFFICE

PERSONNEL

REFERENCE NO. 1

SHEET OF

NOTES CANTERBURY / M.S.S

H.C. BARNHISEL

DATE 5-5-03

ROUTE S.R. # 51

R.C. RYALL

WEATHER CLOUDY

COUNTY Wood

BRUMBAUGH

TEMP. +60°

TOWNSHIP NORTHWOOD

SECTION 28

T 8 N R 12 E

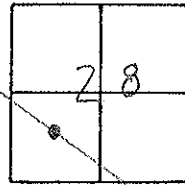
TYPE MONUMENT BRASS MON

ON SURFACE - BELOW 3" DOWN

LEFT - ☉ PAV'T. - RIGHT ON ☉

28' TO LT EDGE PAVEMENT

S.L.M. 270 + 58



Record:
Lucas Co. + Wood Co.
line Marker

COR.
BRICK
BLDG.
DRUGSTORE

97.88' (REC)

S.R. # 51

LUCAS CO.
WOOD CO.

CUT "+"
Top of Bolt
(NE)

72.67'

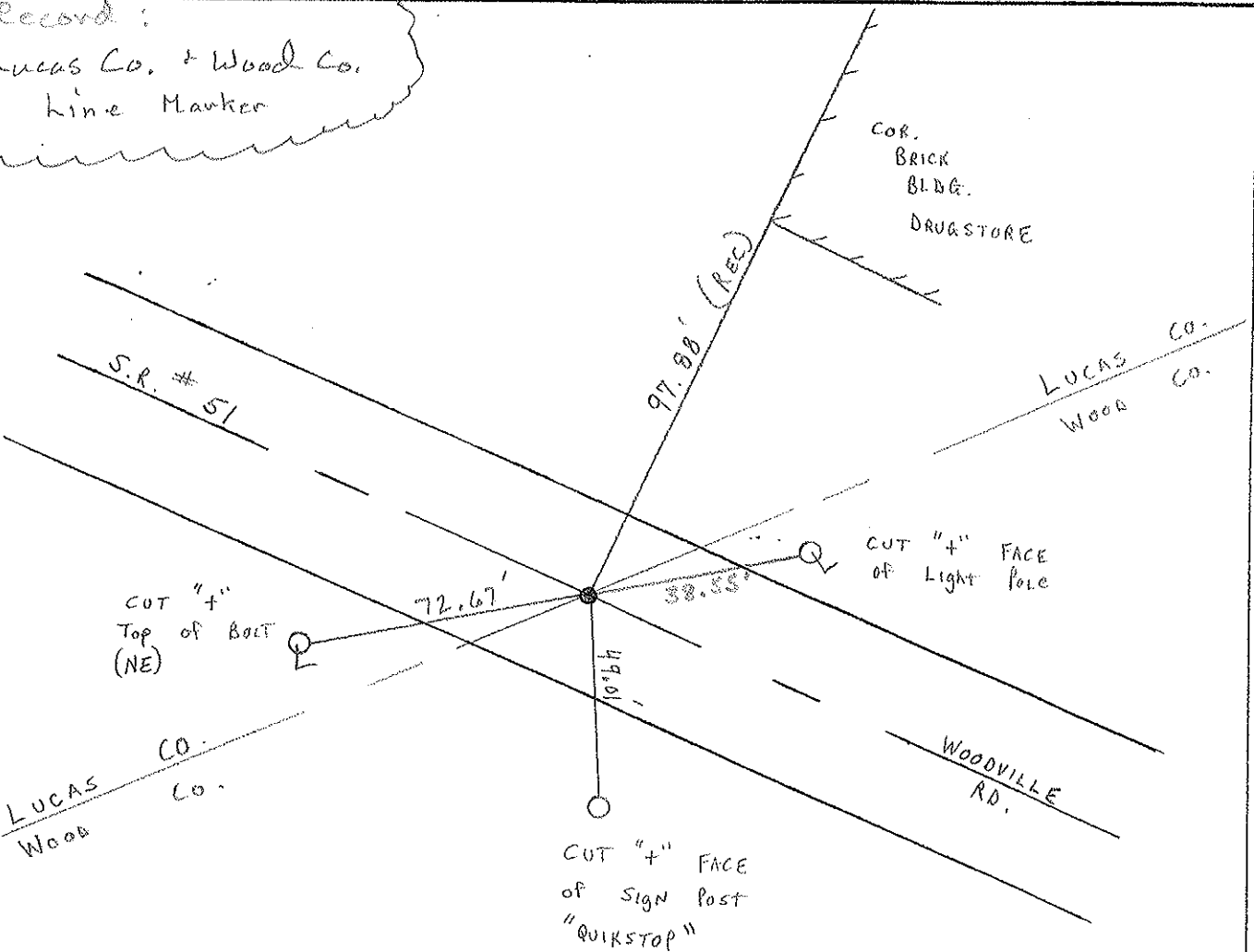
38.55'

CUT "+" FACE
of Light Pole

LUCAS CO.
WOOD

CUT "+" FACE
of Sign Post
"QUIKSTOP"

WOODVILLE
RD.



Resurveyed 2007

O.D.O.T. DISTRICT 2 SURVEY OFFICE

SHEET

OF

County WOOD S.R. 51

Date 3-31-77

Township NORTHWOOD, O.

Weather CLOUDY

Section 28

Temp. 45°

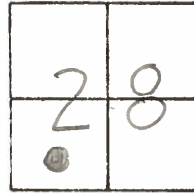
T&N, RIZE

Personnel BURNSIDE

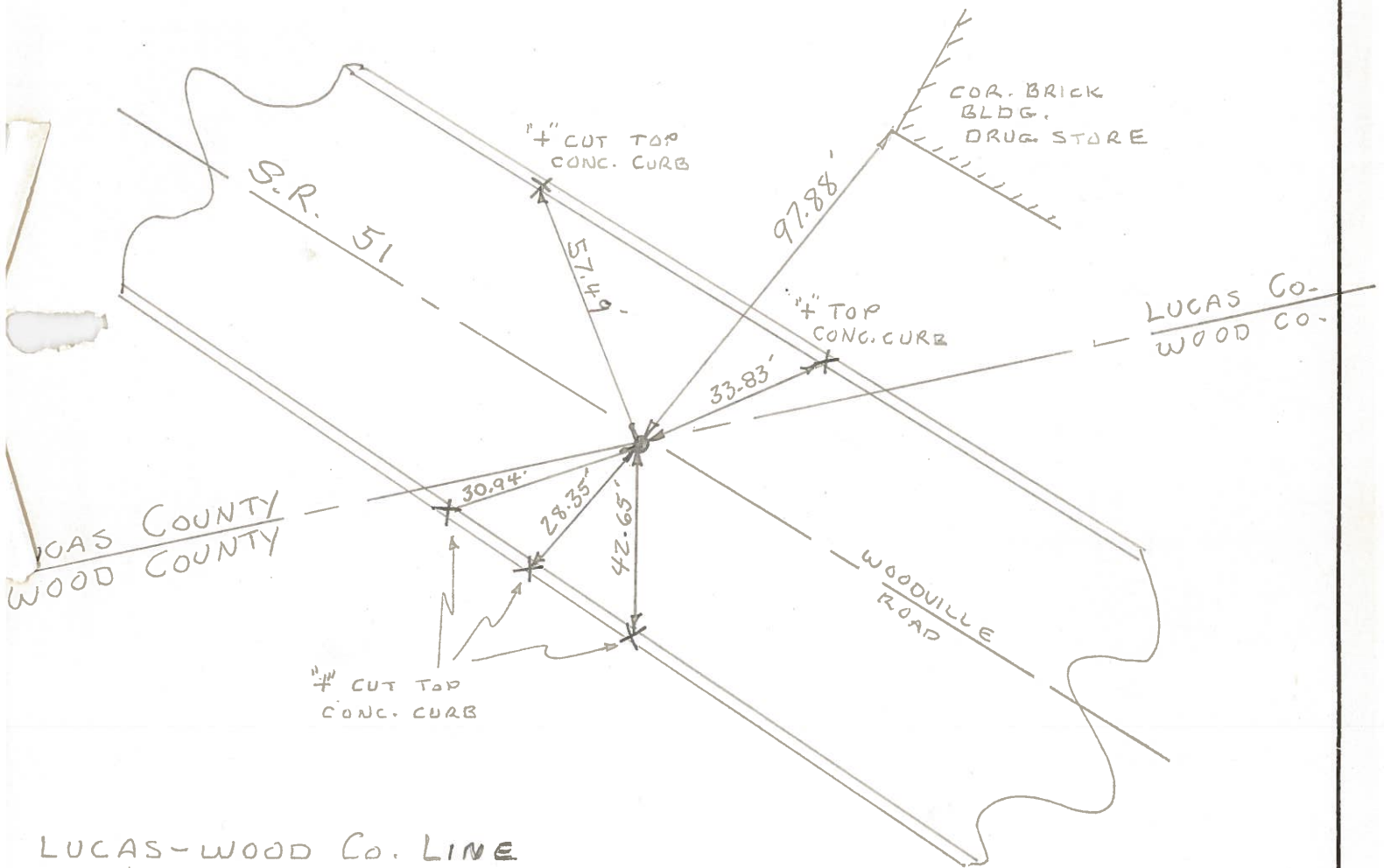
SMITH

BOWERS

MEAD



1



LUCAS-WOOD Co. LINE

STA. 0+00

FD. ADJUSTABLE BRASS MON. @ SURFACE

PERSONNEL TITLE PERSONNEL TITLE

COUNTY Wood

DATE 8-20-50

S. R. #120 S.R.#51

WEATHER

SEC. B-1 & B-2

TEMP.

DESCRIPTION

LEFT

CENTER LINE

RIGHT

JOB NO.

Sta. 0+00
Wood & Lucas Co. Line

① #286

E.N.E. shi. in 14" stump 29.59'
Shiner in Power Pole 37.13'
E.N.E. to mon. 45.70'
S.W. to mon. 45.67'
Shiner in cable pole 42.91'

Sta. 11+22.20
Curtice Rd.

② #287

N. to shiner in P.P. 32.94'
E.S.E. to shiner in cable P. 90.44'
S. to shiner in cable pole 40.82'
E.N.E. B.M. mon. 51.95'

Sta. 17+09.95
Loc 1 Ave.

③ #288

E. to shiner in P.P. 21.40'
S.S.E. to shiner in P.P. 84.31'
W. to shiner in P.P. 43.18'
E.S.E. to shiner in P.P. 99.12'

Sta. 37+00.15
P.I. station

#289

N.N.W. to shiner in P.P. 97.88'
E.N.E. to shiner in P.P. 28.26'
S.S.W. to shiner in P.P. 40.82'
E.S.E. to shiner in P.P. 107.98'

Sta. 45+78.25
P.I.

#290

E. to shiner in P.P. 36.47'
S.S.E. to shiner in P.P. 65.90'
W. to shiner in P.P. 68.10'
N.W. to shiner in P.P. 81.90'