

O.D.O.T. DISTRICT 2 SURVEY OFFICE (USE ONLY)

PERSONNEL

REFERENCE NO. 2

SHEET 3 OF 4

NOTES HOFFMAN

DATE 4/7/88

ROUTE SR 64

H.C. LOEHRKE

WEATHER OVERCAST

COUNTY WOOD

R.C. BARNHISEL
REED

TEMP. 40°

TOWNSHIP CENTER

SECTION 20

DWG BY NIESE PID 101007

T 5 N R 11 E

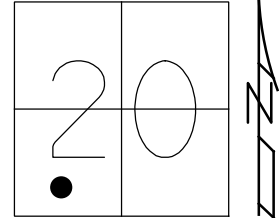
TYPE MONUMENT P.K./WASHER

ON SURFACE - ~~BELOW~~ ON

OFFSET 6.9' \perp : RT

- TO - EDGE PAVEMENT

STATION: 47+00.30



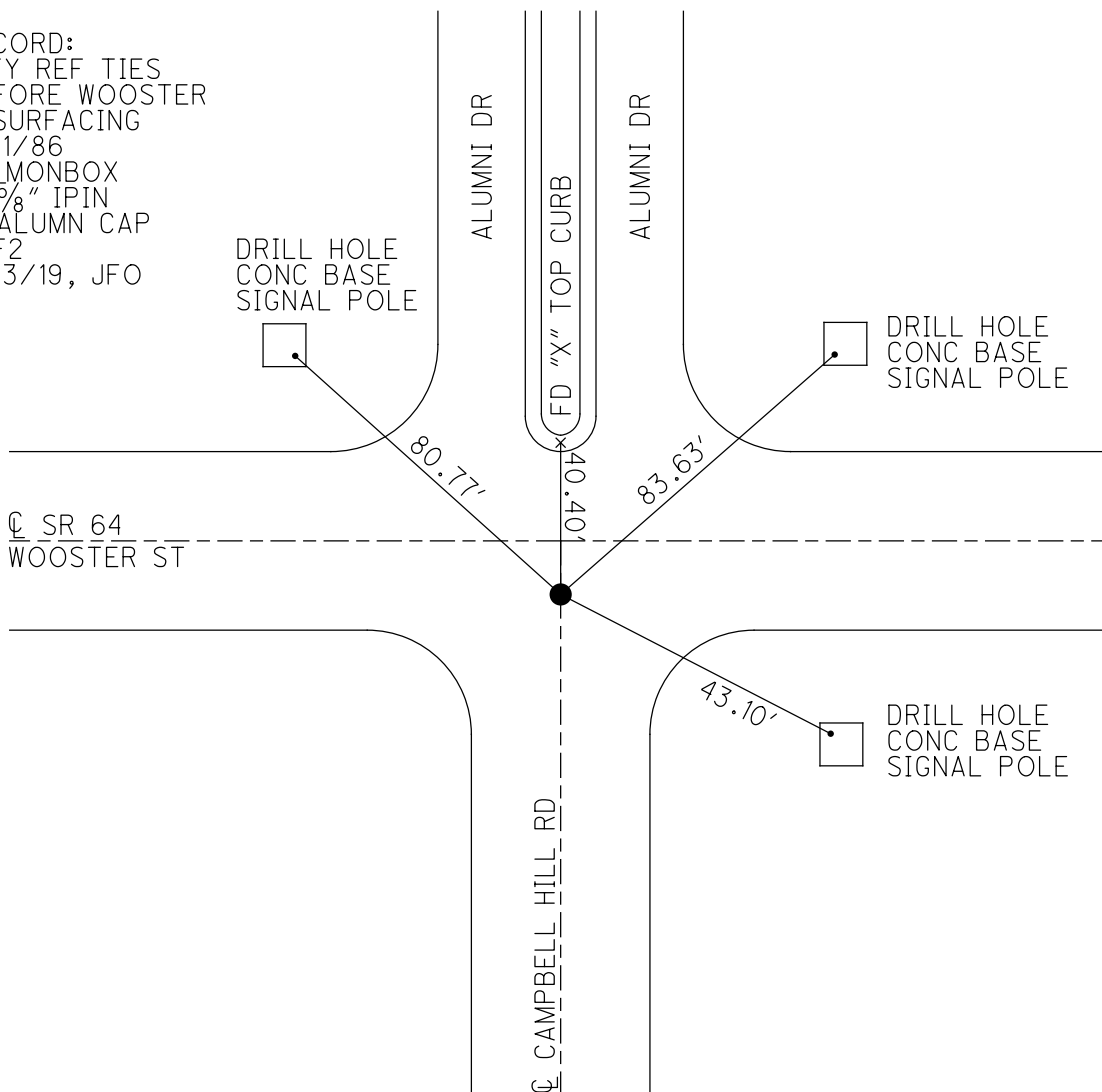
HORIZ.DATUM: NAD83(2011)

GEOID: 2012A

GRID: NORTHING: 624188.174

EASTING: 1660139.870

RECORD:
CITY REF TIES
BEFORE WOOSTER
RESURFACING
6/11/86
FD MONBOX
W/5/8" IPIN
W/ALUMN CAP
REF2
8/13/19, JFO



O.D.O.T. DISTRICT 2 SURVEY OFFICE

PERSONNEL

REFERENCE NO. 2

SHEET OF

NOTES HOFFMAN

H.C. LOEHRE

DATE 4-7-88

ROUTE SR 64

R.C. BARNHISEL

WEATHER OVERCAST

COUNTY Wood

REED

TEMP. 40°

TOWNSHIP Center

SECTION 20

T.S. N R 11 E

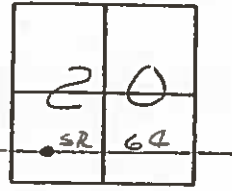
TYPE MONUMENT P.K./WASHER Set THIS DATE

ON SURFACE - BELOW yes

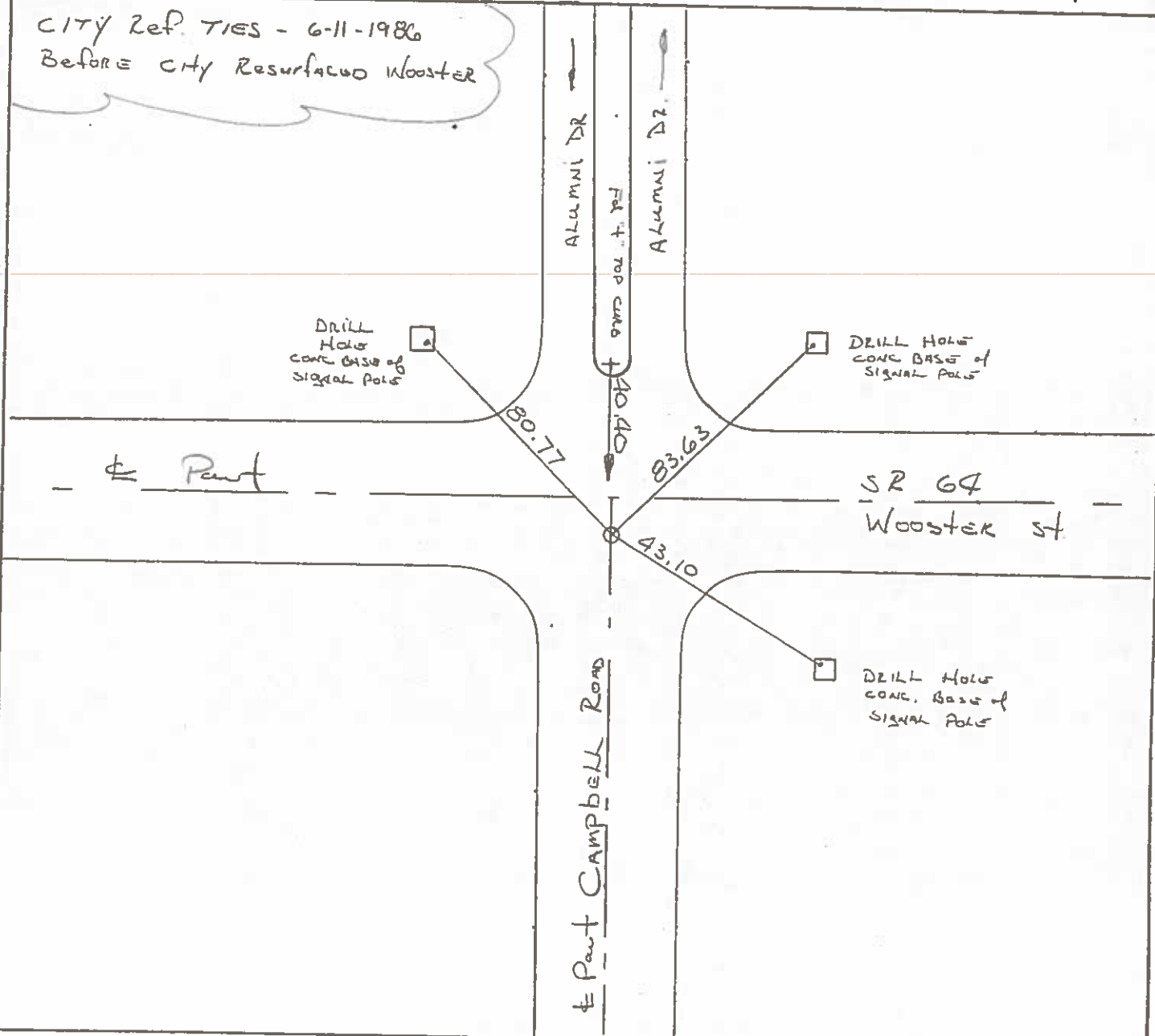
~~LEFT -~~ PAV'T. - RIGHT 6.9

 TO EDGE PAVEMENT ON Part South

S.L.M. 40+13



CITY Ref. TIES - 6-11-1986
Before City Resurfaced Wooster



County WOOD S.R. 64

Date 9-13-79

Township CENTER (BOWLING GREEN CORP.)

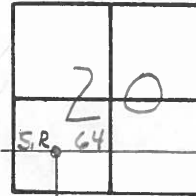
Weather CLOUDY

Section 20

Temp. +77°

T5N, R11E

Personnel BURNSIDE
SMITH
BOWERS
MEAD



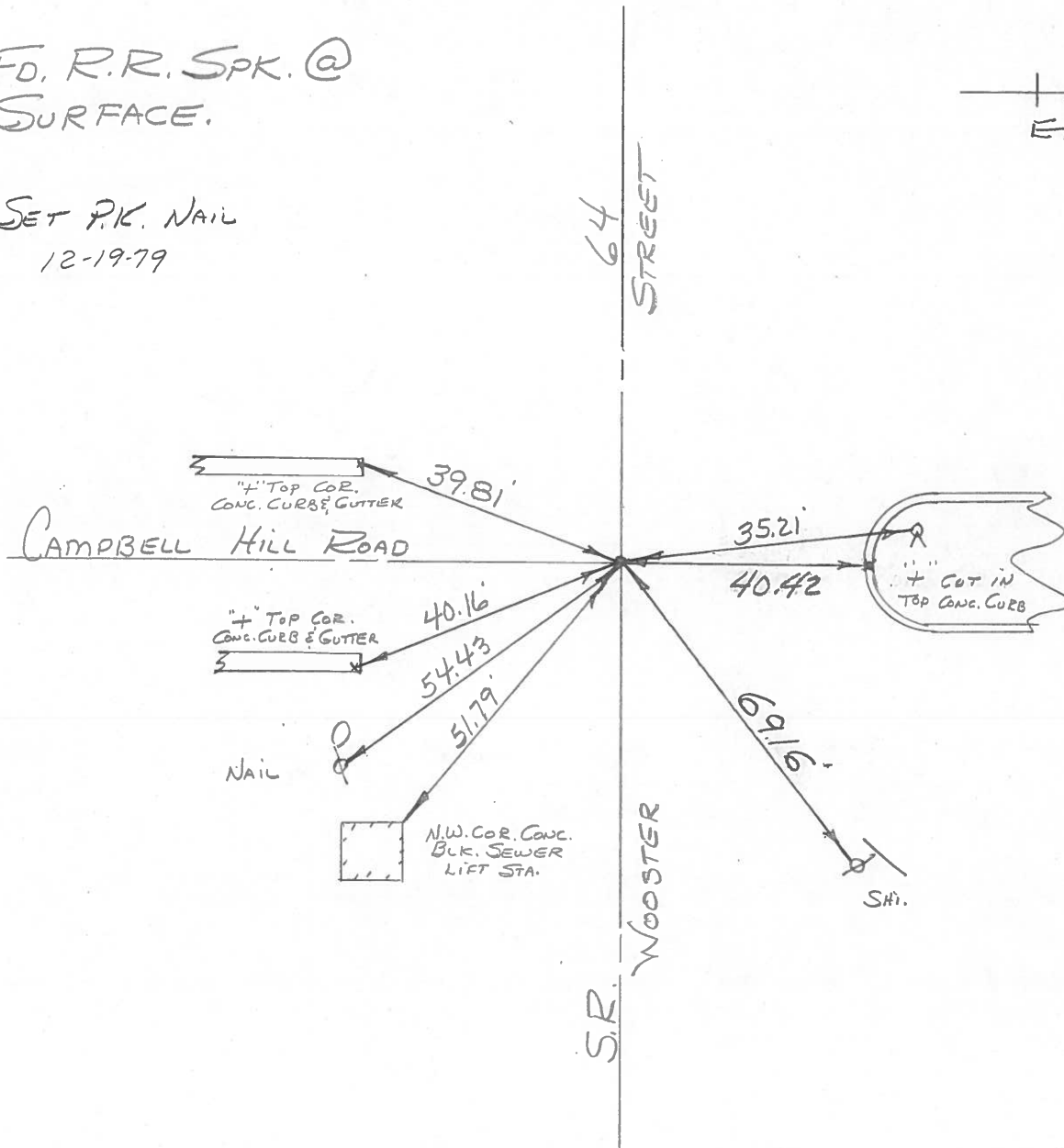
BEGIN POINT CHECK
BEFORE RESURFACING

(2)

FD. R.R. SPK. @
SURFACE.



SET P.K. NAIL
12-19-79



PERSONNEL	TITLE	PERSONNEL	TITLE
BURNSIDE		Rocchini	
SMITH			
BOWERS			
HOLCOMBE			

COUNTY Wood DATE 6-14-71
 S. R. 64 (Old US6) WEATHER Cloudy
 SEC. BOWLING GREEN TEMP. +70°

DESCRIPTION _____ LEFT _____ CENTER LINE _____ RIGHT _____ JOB NO. _____

