

O.D.O.T. DISTRICT 2 SURVEY OFFICE (USE ONLY)

PERSONNEL

REFERENCE NO. 3 A

SHEET 6 OF 24

NOTES HOFFMAN

DATE 4/6/88

ROUTE SR 64

H.C. LOEHRKE

WEATHER OVERCAST

COUNTY WOOD

R.C. BARNHISEL

TEMP. 60°

TOWNSHIP CENTER

SECTION 19

DWG BY NIESE PID _____

T 5 N R 11 E

TYPE MONUMENT P.K./WASHER

ON SURFACE - ~~BELOW~~ ON

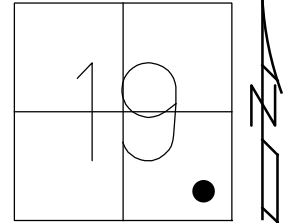
OFFSET CL PAVEMENT ON LT : RT

16.4' TO LT EDGE PAVEMENT

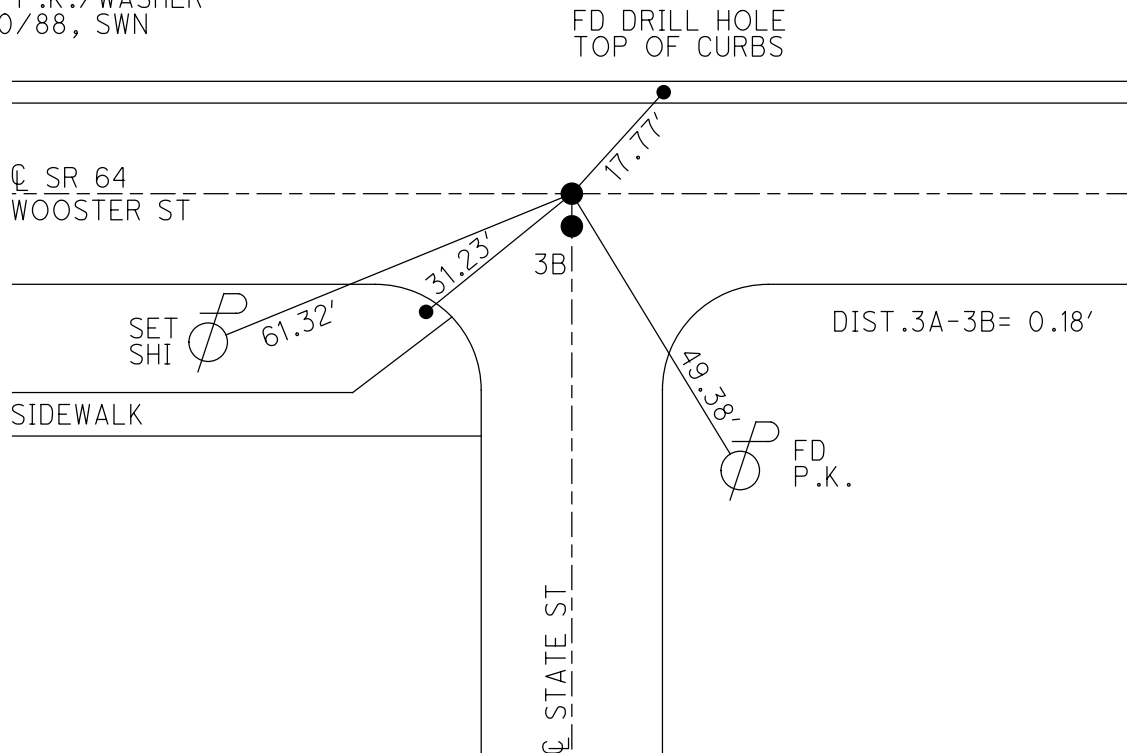
STATION: 63+10

HORZ.DATUM: _____ GEOID: _____

GRID: NORTHING: _____ EASTING: _____



RECORD:
 FD MINE SPIKE
 1" DOWN
 9/13/79
 SET P.K.NAIL
 12/19/79, BURNSIDE
 P.K.NAIL
 SET BY CITY
 4/26/84
 FD P.K./WASHER
 4/6/88, CL
 SET P.K./WASHER
 6/10/88, SWN



O.D.O.T. DISTRICT 2 SURVEY OFFICE

PERSONNEL

REFERENCE NO. 3A, 3B

SHEET OF

NOTES HOFFMAN

H.C. LOEHRE

R.C. BAHNHISEL

DATE 4-6-88

WEATHER OVERCAST

TEMP. 60°

ROUTE SR 64

COUNTY WOOD

TOWNSHIP Center

SECTION 19

T5 N R 11 E

TYPE MONUMENT P.K.

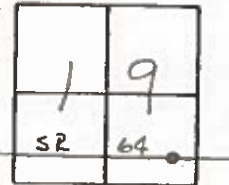
ON SURFACE - BELOW YES

LEFT- & PAV'T. - RIGHT YES

16.4 TO LT. EDGE PAVEMENT

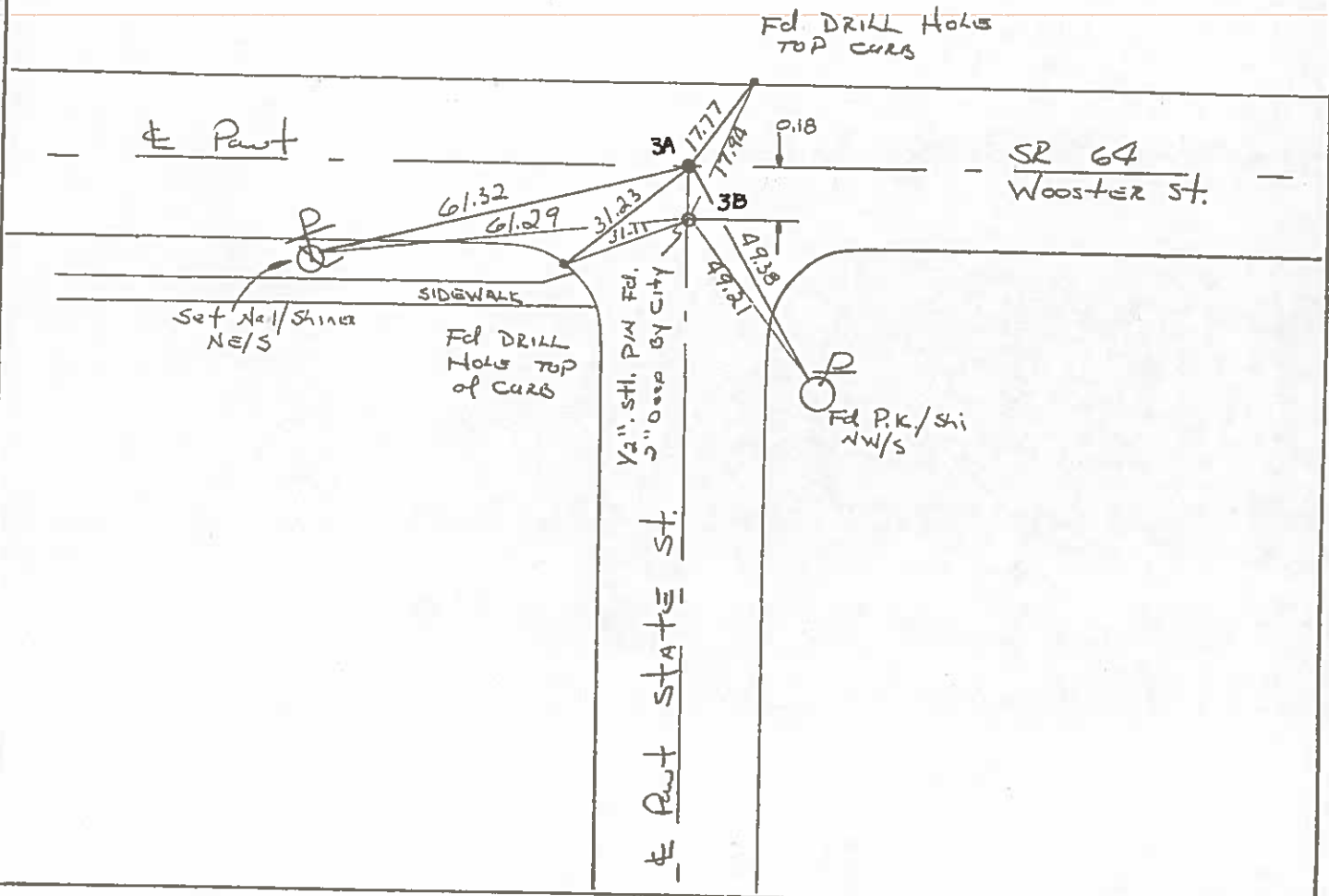
S.L.M. 63+10

Set P.K./WASHER
6-10-88 SWK



Note: P.K. set by CITY
ON E Wooster
Ref TIES 4-26-84

Set P.K./WASHER @ NORTH Point ONLY



County WOOD S.R. 64

Date 9-13-79

Township CENTER B.G. CORP.

Weather CLOUDY

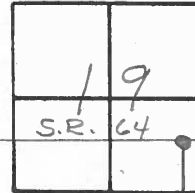
Section 19

Temp. +78°

T5N, R11E

Personnel BURNSIDE
SMITH
BOWERS
MEAD

3A

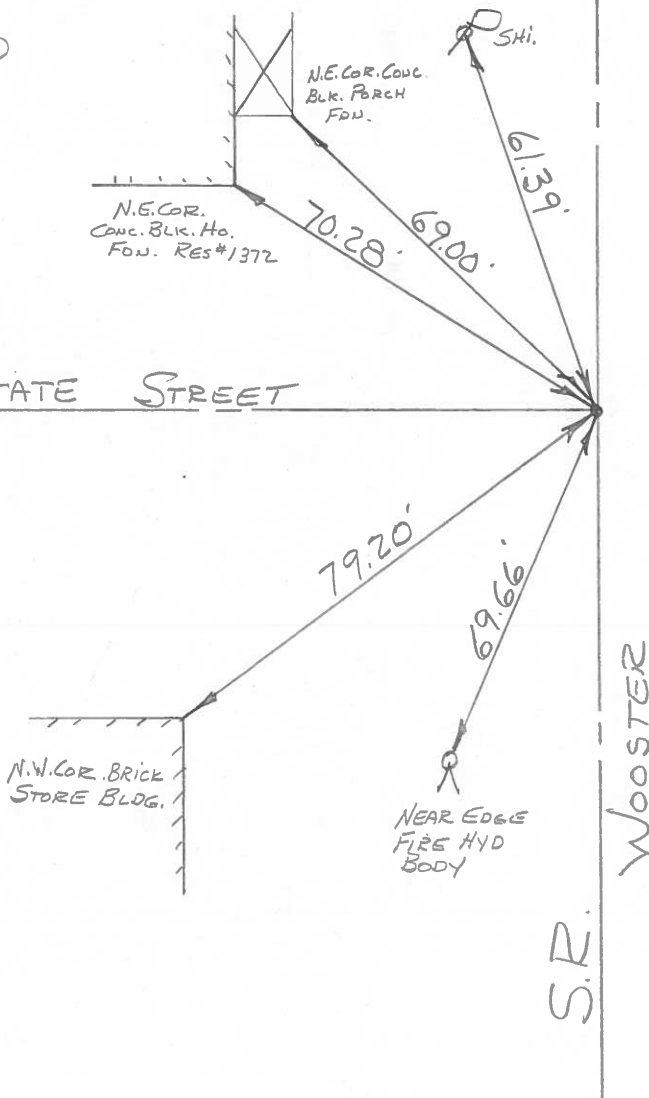


FD. MINE SPK.
1" DEEP & IN
CTR. PAVE.

SET P.K. @
SURFACE
12-19-79



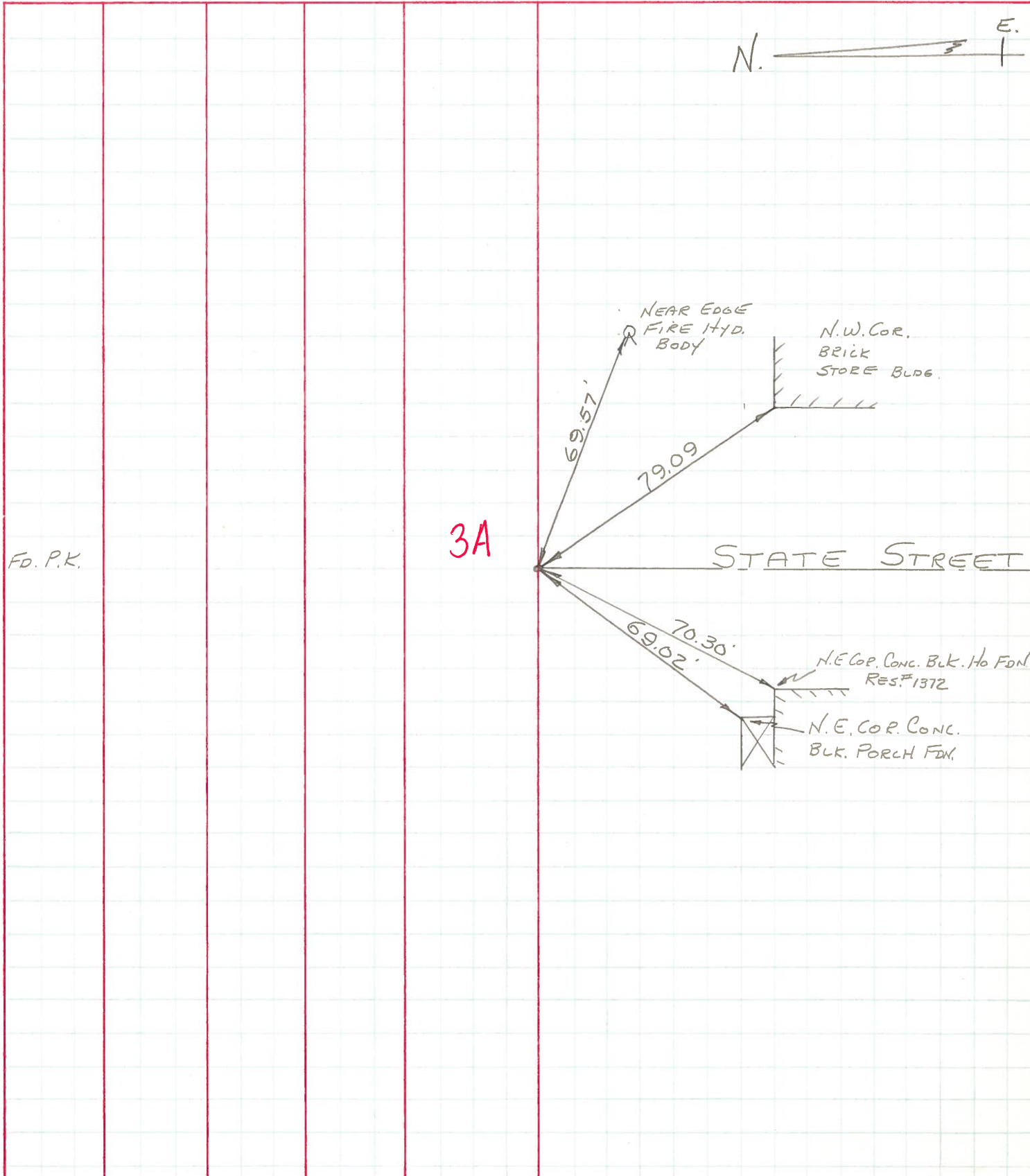
STATE STREET



PERSONNEL	TITLE	PERSONNEL	TITLE
BURNSIDE		Rocchini	
SMITH			
BOWERS			
HOLCOMBE			

COUNTY WOOD DATE 6-11-71
 S. R. 64 (OLD U.S. 6) WEATHER CLOUDY
 SEC. BOWLING GREEN TEMP. +76°

DESCRIPTION _____ LEFT _____ CENTER LINE _____ RIGHT _____ JOB NO. _____



PERSONNEL	TITLE	PERSONNEL	TITLE	COUNTY	DATE	WEATHER	TEMP.
SWORDEN				Wood	July 19, 1959	CLEAR	+85
HOLCOMBE				S. R. U.S. #6	10-28-60		
SAGE				SEC. Bowling Green			
ERNSTHAUSEN							

DESCRIPTION TIES ON EAST WOOSTER ST JOB NO. _____

LEFT

CENTER LINE

RIGHT

MERCER Rd.

