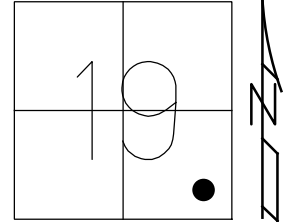


O.D.O.T. DISTRICT 2 SURVEY OFFICE (USE ONLY)

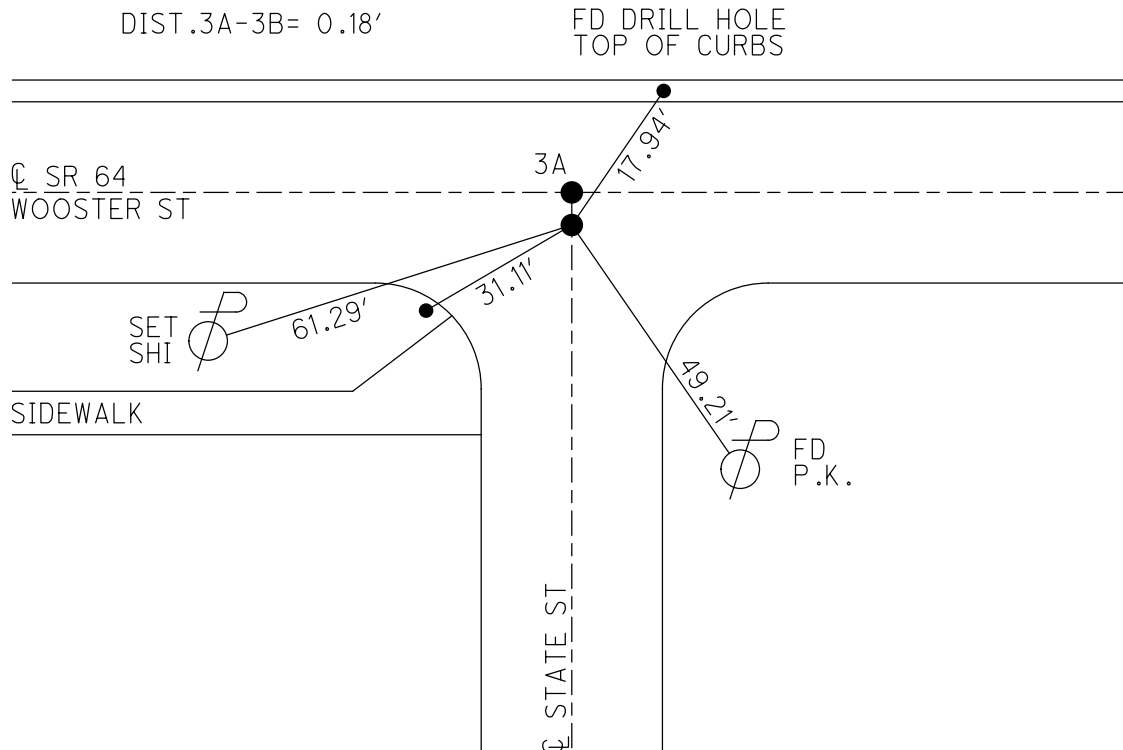
PERSONNEL _____ REFERENCE NO. 3 B SHEET 7 OF 24
 NOTES HOFFMAN DATE 4/6/88 ROUTE SR 64
 H.C. LOEHRKE WEATHER OVERCAST COUNTY WOOD
 R.C. BARNHISEL TEMP. 60° TOWNSHIP CENTER
 DWG BY NIESE PID _____ SECTION 19
 T 5 N R 11 E

TYPE MONUMENT P.K./WASHER
~~ON SURFACE~~ - BELOW 3"
 OFFSET Q PAVEMENT ON LT : RT
16.4' TO LT EDGE PAVEMENT
 STATION: 63+10



HORIZ.DATUM: _____ GEOID: _____
 GRID: NORTHING: _____ EASTING: _____

RECORD:
 FD 1/2" STL.
 P.K./WASHER
 2" DOWN
 BY CITY
 4/6/88, CL



O.D.O.T. DISTRICT 2 SURVEY OFFICE

PERSONNEL

REFERENCE NO. 3A, 3B

SHEET OF

NOTES HOFFMAN

H.C. LOEHRER

R.C. BAHNHISEL

DATE 4-6-88

WEATHER OVERCAST

TEMP. 60°

ROUTE SR 64

COUNTY WOOD

TOWNSHIP Center

SECTION 19

T5 N R 11 E

TYPE MONUMENT P.K.

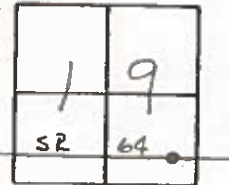
ON SURFACE - BELOW YES

LEFT- & PAV'T. - RIGHT YES

16.4 TO LT. EDGE PAVEMENT

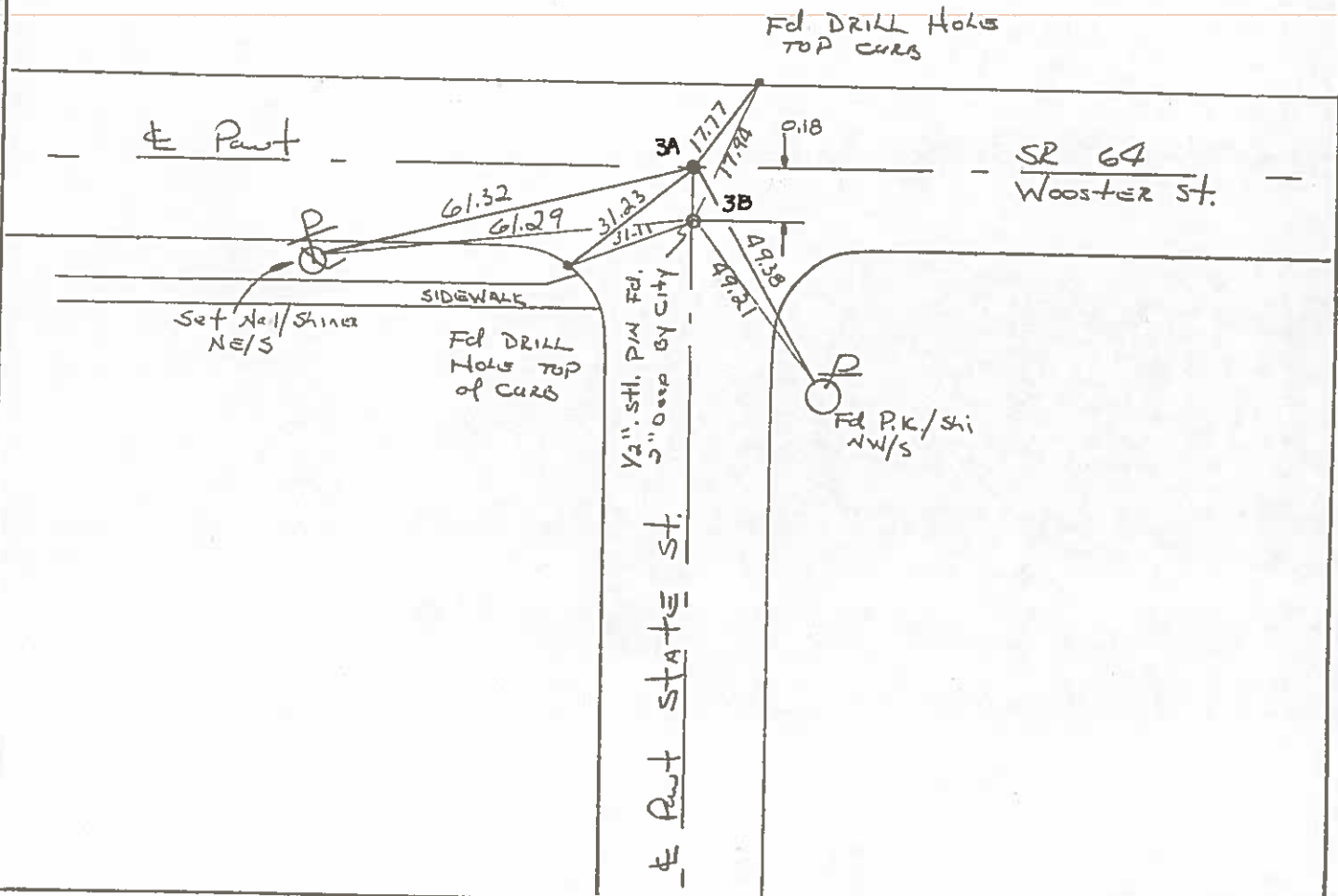
S.L.M. 63+10

Set P.K./WASHER
6-10-88 SWK



Note: P.K. set by CITY
ON E Wooster
Ref TIES 4-26-84

Set P.K./WASHER @ NORTH Point ONLY



County WOOD S.R. 64

Date 9-13-79

Township CENTER B.G. CORP.

Weather CLOUDY

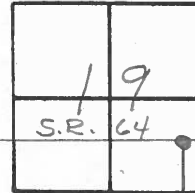
Section 19

Temp. +78°

T5N, R11E

Personnel BURNSIDE
SMITH
BOWERS
MEAD

3A

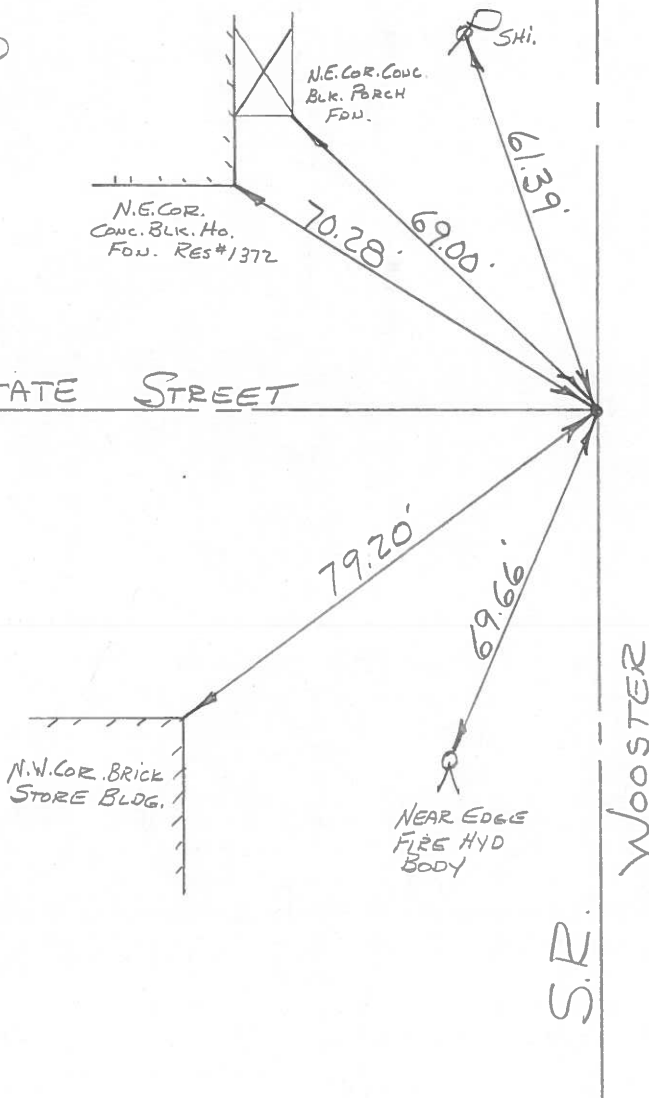


FD. MINE SPK.
1" DEEP & IN
CTR. PAVE.

SET P.K. @
SURFACE
12-19-79



STATE STREET



N.E. COR. CONC.
BLK. PORCH
FDN.
70.28'
69.00'

N.W. COR. BRICK
STORE BLDG.

NEAR EDGE
FIRE HYD
BODY

WOOSTER

S.R. 64

PERSONNEL	TITLE	PERSONNEL	TITLE
BURNSIDE		Rocchini	
SMITH			
BOWERS			
HOLCOMBE			

COUNTY WOOD DATE 6-11-71
 S. R. 64 (OLD U.S. 6) WEATHER CLOUDY
 SEC. BOWLING GREEN TEMP. +76°

DESCRIPTION _____ LEFT _____ CENTER LINE _____ RIGHT _____ JOB NO. _____

