

O.D.O.T. DISTRICT 2 SURVEY OFFICE (USE ONLY)

PERSONNEL

REFERENCE NO. 3 D

SHEET 9 OF 24

NOTES HOFFMAN

DATE 4/6/88

ROUTE SR 64

H.C. LOEHRKE

WEATHER OVERCAST

COUNTY WOOD

R.C. BARNHISEL

TEMP. 60°

TOWNSHIP CENTER

SECTION 19

DWG BY NIESE PID _____

T 5 N R 11 E

TYPE MONUMENT P.K. NAIL

ON SURFACE - ~~BELOW~~ ON

OFFSET 0.7' C PAVEMENT LT : ~~RT~~

15.8' TO LT EDGE PAVEMENT

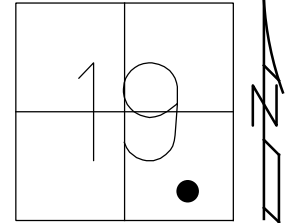
STATION: 67+29

HORIZ. DATUM: _____

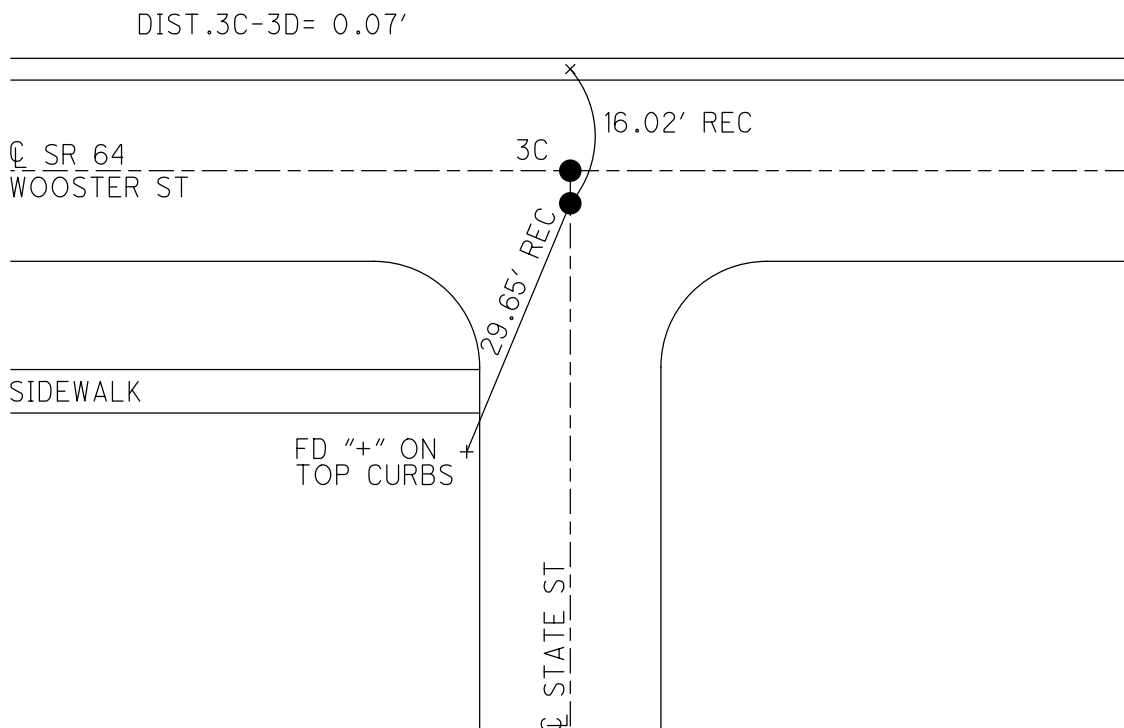
GEOID: _____

GRID: NORTHING: _____

EASTING: _____



RECORD:
P.K. NAIL
FD BY CITY
D.N.F.
4/6/88, CL



O.D.O.T. DISTRICT 2 SURVEY OFFICE

PERSONNEL

REFERENCE NO. 3C, 3D

SHEET OF

NOTES HOFFMAN

H.C. LOEHRKE

R.C. BARNHISEL

DATE 4-6-88

WEATHER OVERCAST

TEMP. 60°

ROUTE SR 64

COUNTY Wood

TOWNSHIP Center

SECTION 19

T. S N. R 11 E

TYPE MONUMENT P.K. ^{Fd ONLY 1 P.K.} - Set by CITY

ON SURFACE - BELOW YES

~~LEFT~~ - PAV'T. - ~~RIGHT~~ YES

15.8 TO LT EDGE PAVEMENT

S.L.M. 67+29

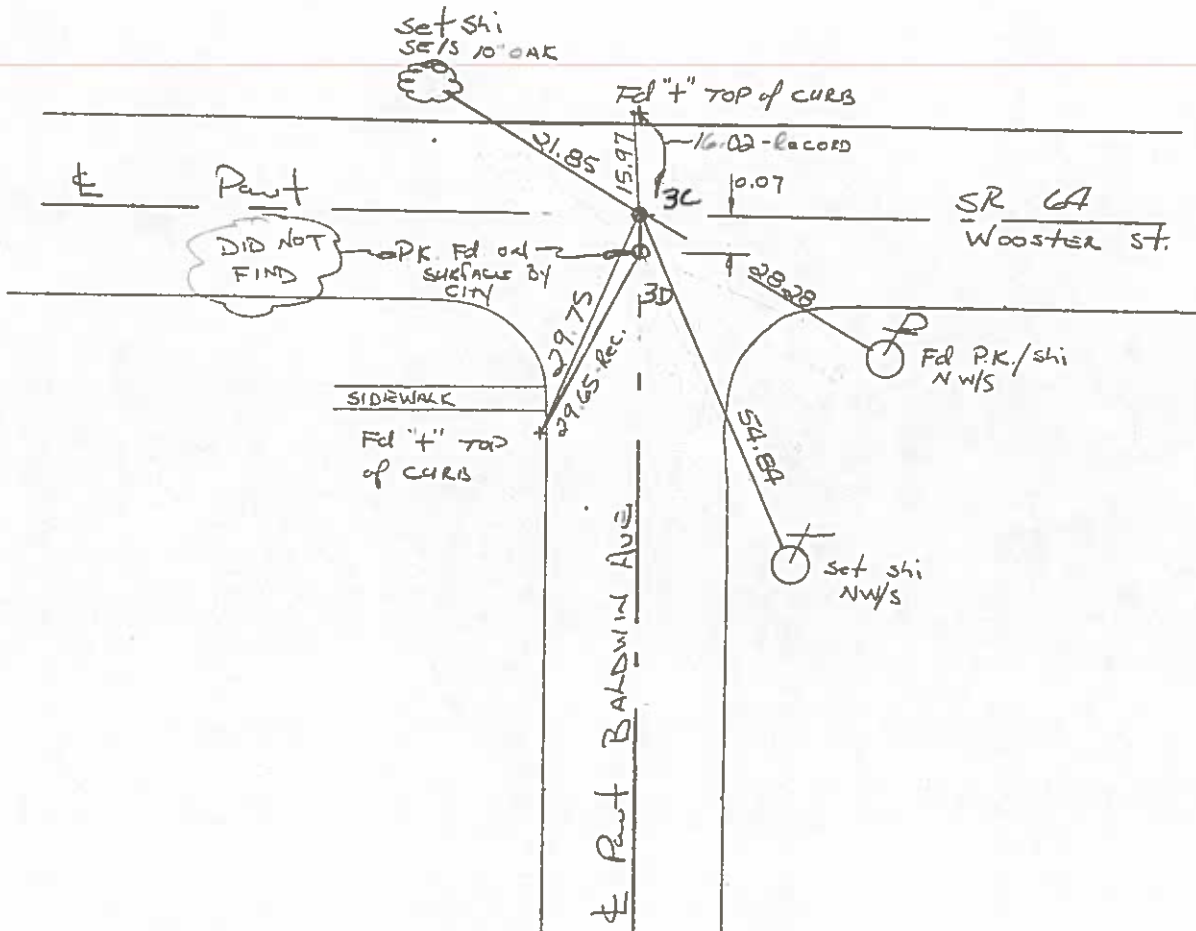
Set PK/WASHER
6-10-88 SW

19	64
SR	64



Notes: P.K. set by CITY
on Wooster
Ref TIES 4-26-84
0.07' NORTH

Set P.K./WASHER at NORTH Point ONLY



County WOOD S.R. 64

Date 9-13-79

Township CENTER B.G. CORP.

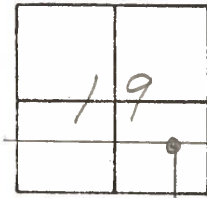
Weather CLOUDY

Section 19

Temp. +78°

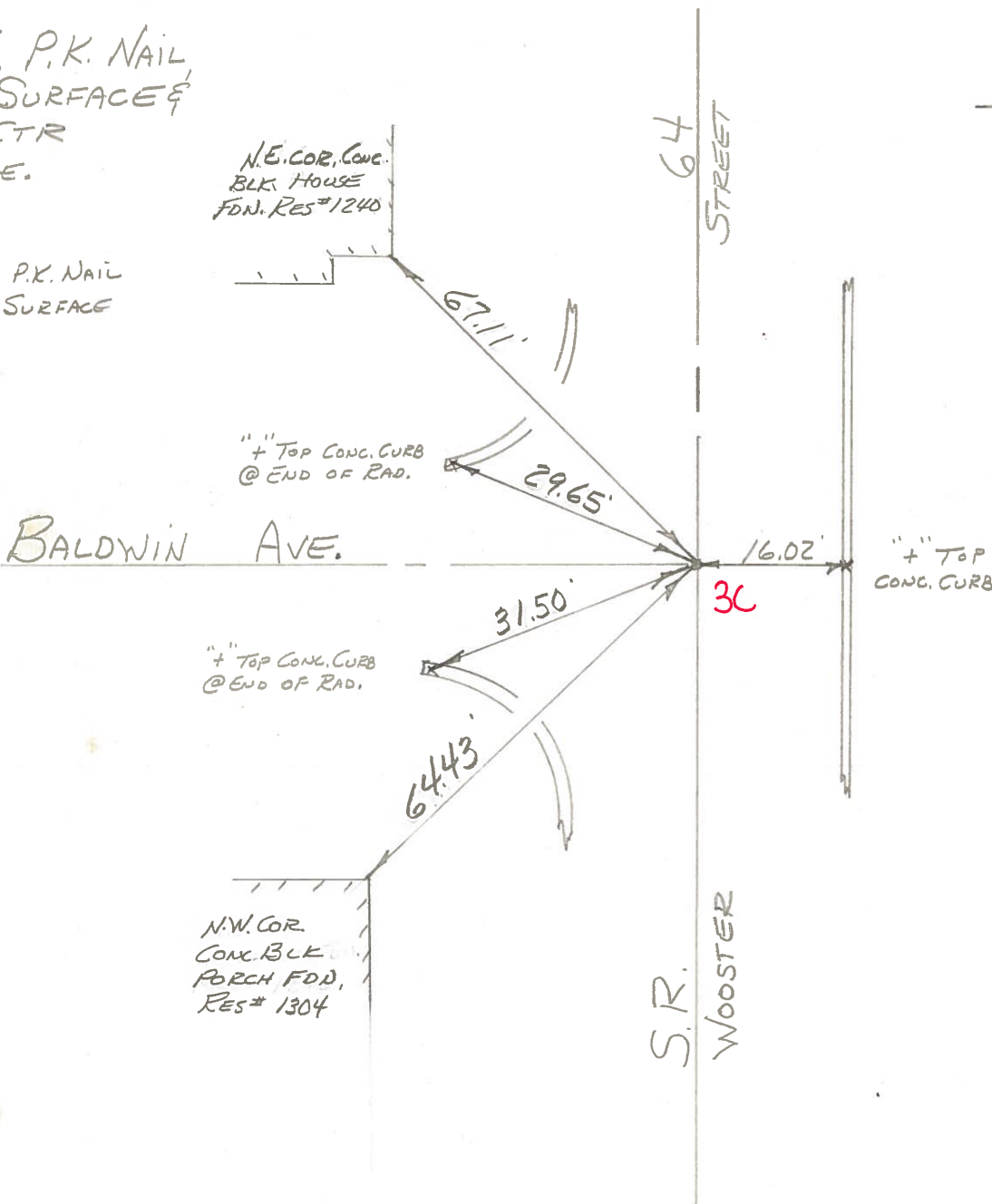
T5N, R11E

Personnel: BURNSIDE
SMITH
BOWERS
MEAD



FD. P.K. NAIL
@ SURFACE
IN CTR
PAVE.

SET P.K. NAIL
@ SURFACE



PERSONNEL	TITLE	PERSONNEL	TITLE
BURNSIDE		Rocchini	
SMITH			
BOWERS			
HOLCOMBE			

COUNTY WOOD DATE 6-11-71
 S. R. 64 (OLD U.S. 6) WEATHER CLOUDY
 SEC. BOWLING GREEN TEMP. +75°

DESCRIPTION _____ LEFT _____ CENTER LINE _____ RIGHT _____ JOB NO. _____

