

O.D.O.T. DISTRICT 2 SURVEY OFFICE (USE ONLY)

PERSONNEL

REFERENCE NO. 3 F

SHEET 11 OF 24

NOTES HOFFMAN

DATE 4/6/88

ROUTE SR 64

H.C. LOEHRKE

WEATHER OVERCAST

COUNTY WOOD

R.C. BARNHEISEL

TEMP. 60°

TOWNSHIP CENTER

SECTION 19

DWG BY NIESE PID _____

T 5 N R 11 E

TYPE MONUMENT P.K.

ON SURFACE - ~~BELOW~~ ON

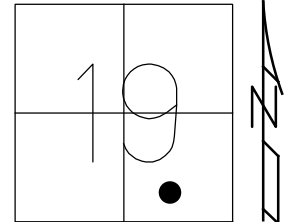
OFFSET ☉ PAVEMENT ON LT : RT

15.9 TO RT EDGE PAVEMENT

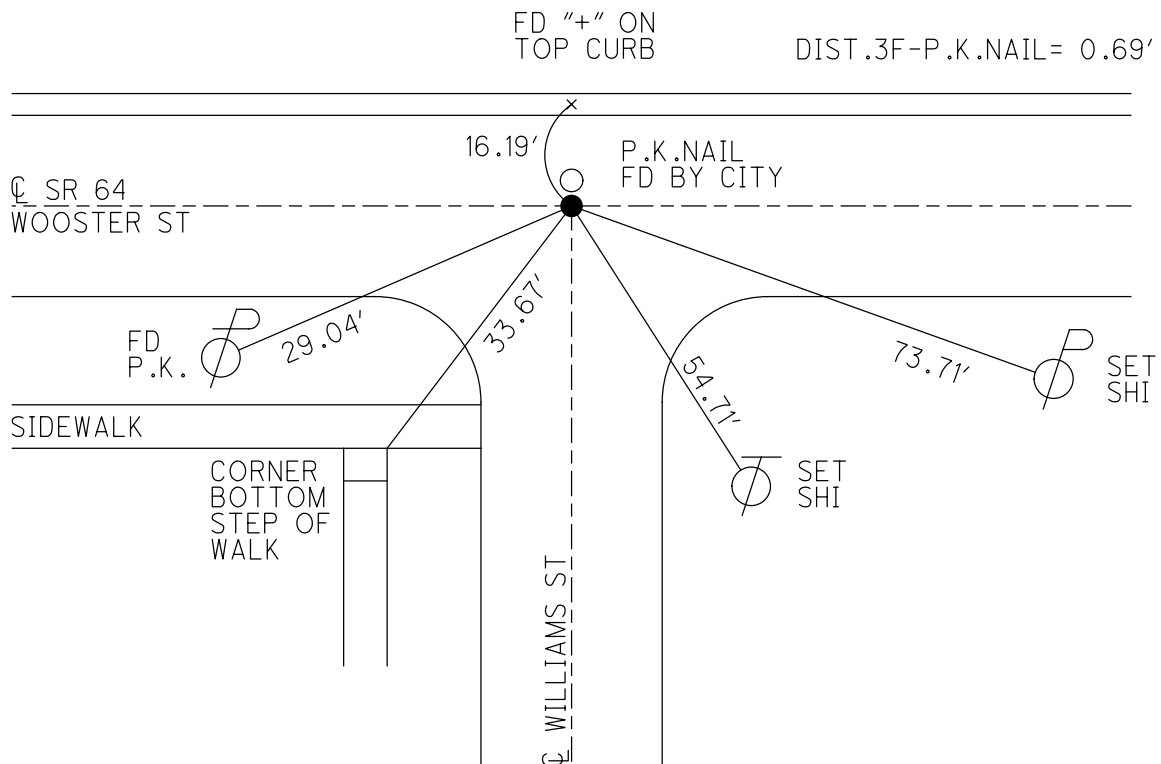
STATION: 71+57

HORZ. DATUM: _____ GEOID: _____

GRID: NORTHING: _____ EASTING: _____



RECORD:
P.K. NAIL
SET BY CITY
4/26/84
FD P.K. NAIL
4/6/88, CL
SET P.K./WASHER
6/10/88, SWN



O.D.O.T. DISTRICT 2 SURVEY OFFICE

PERSONNEL

REFERENCE NO. 3F

SHEET _____ OF _____

NOTES HOFFMAN

H.C. LOEHRS

R.G. BARNHISEL

DATE 4-6-88

WEATHER OVERCAST

TEMP. 60°

ROUTE SR 64

COUNTY WOOD

TOWNSHIP Center

SECTION 19

T. 5 N. R. 11 E.

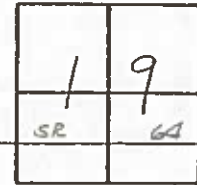
TYPE MONUMENT PK. Set PK/WASHER

ON SURFACE - BELOW yes 6-10-88 SWM

~~LEFT - & PAV'T. - RIGHT~~ OF BOTH Pav'ts

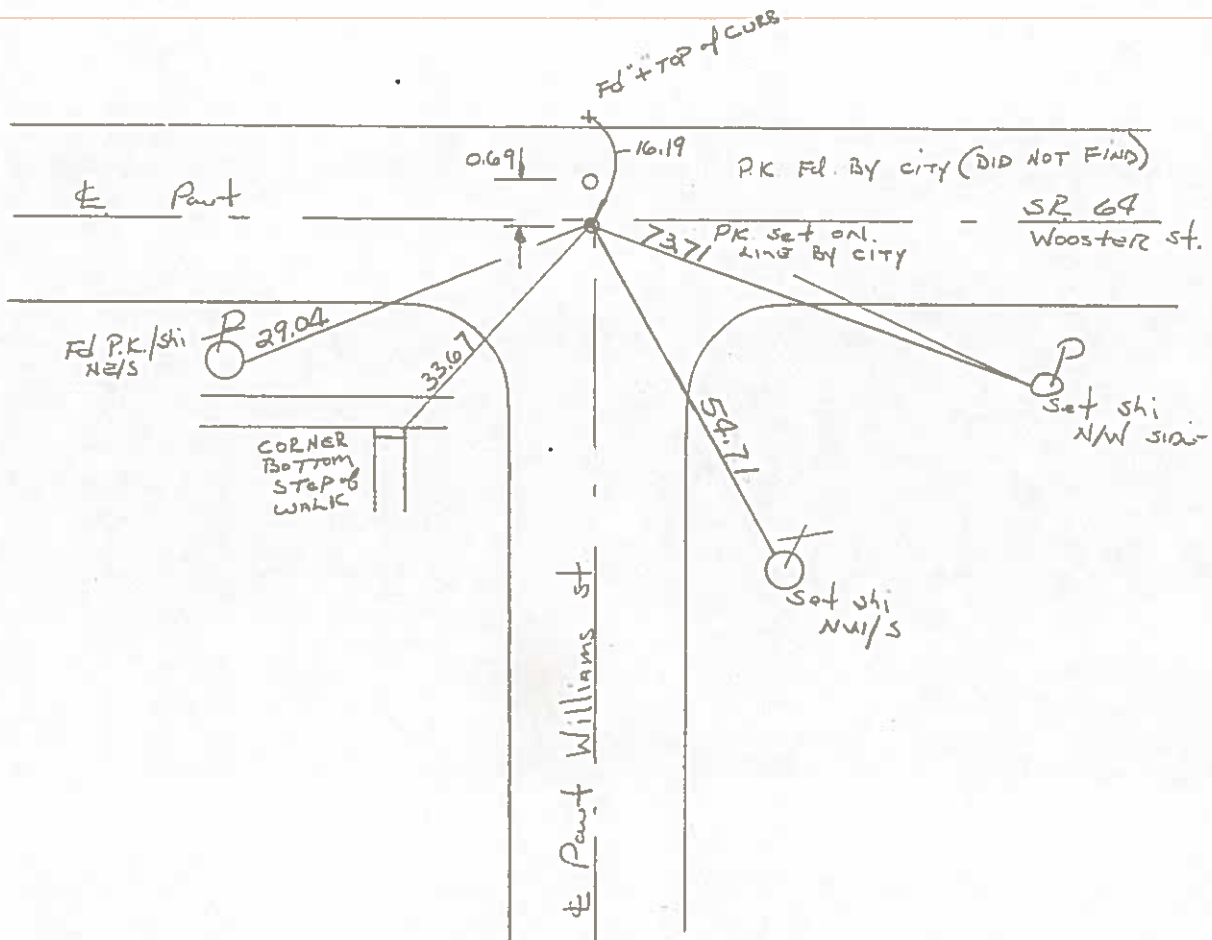
15.9 TO RT EDGE PAVEMENT

S.L.M. 71+57



NOTE: PK. set by city
on & Wooster
Ref. TIES 4-26-84

Set PK/WASHER at South Point ONLY



County WOOD S.R. 64

Date 9-13-79

Township CENTER B.G. CORP.

Weather CLOUDY

Section 19

Temp. +78°

T5N, R11E

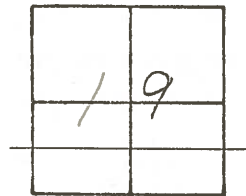
Personnel BURNSIDE

SMITH

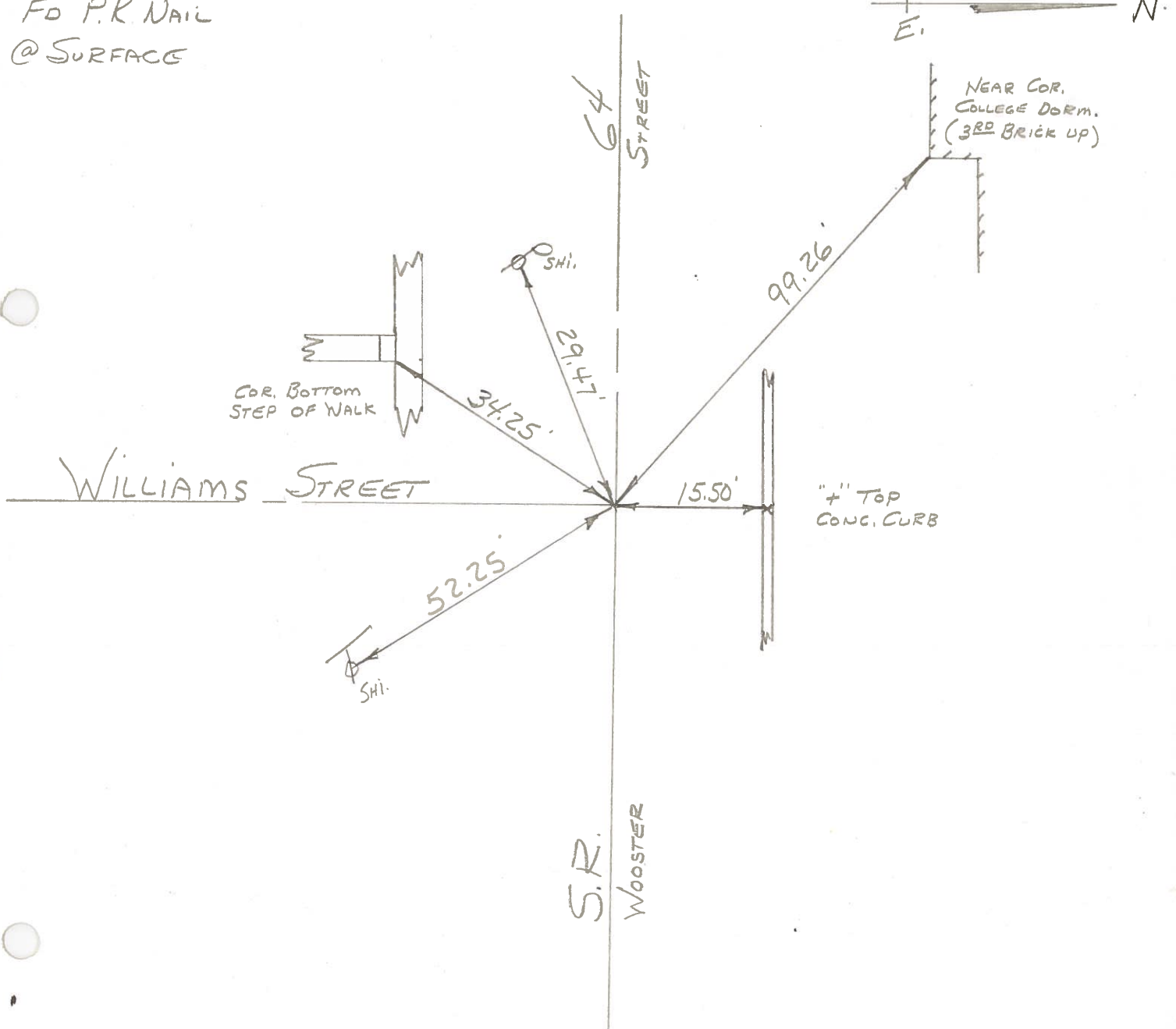
BOWERS

MEAD

3F



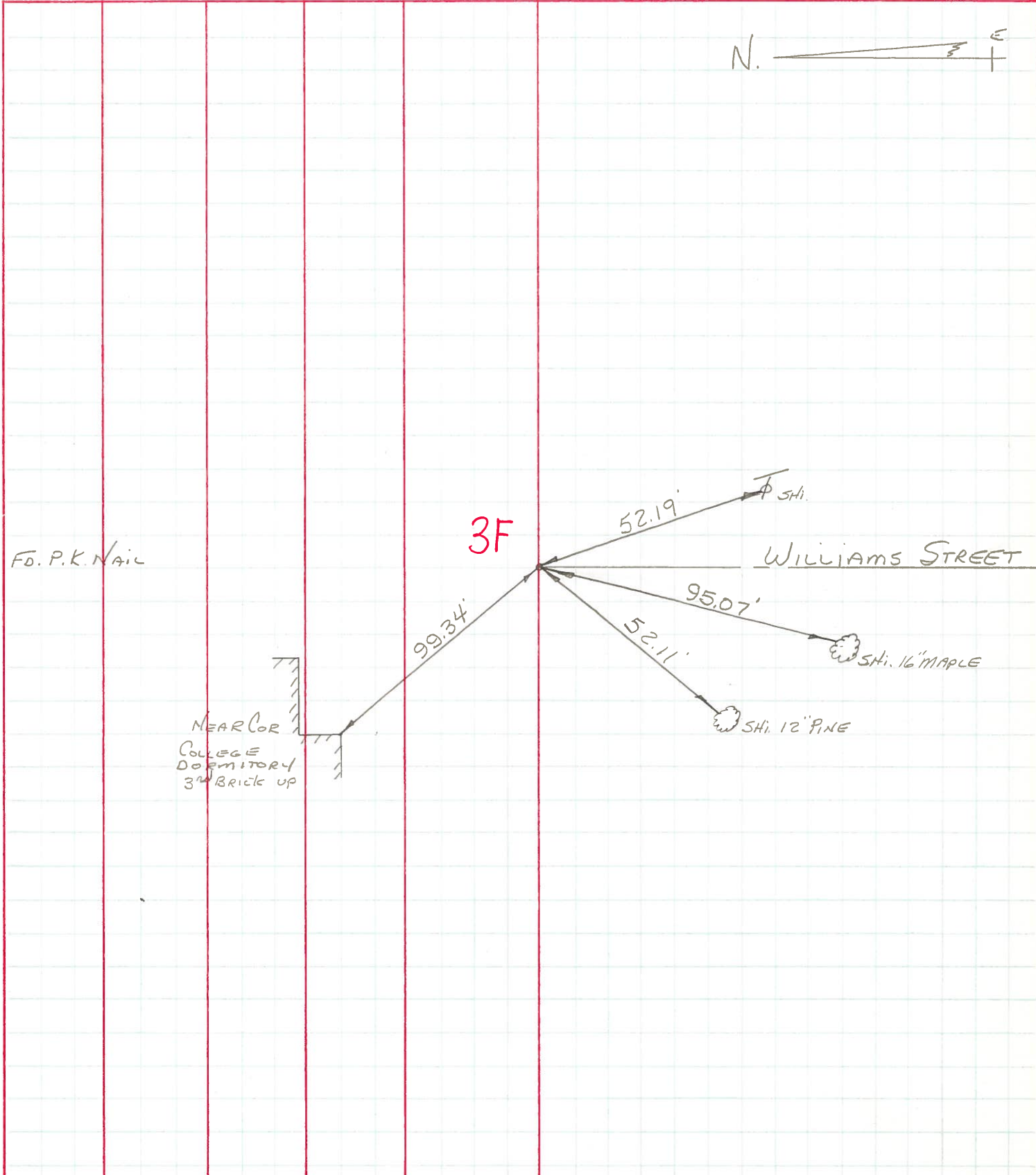
FD P.K. NAIL
@ SURFACE



PERSONNEL	TITLE	PERSONNEL	TITLE
BURNSIDE		Rocchini	
SMITH			
BOWERS			
HOLCOMBE			

COUNTY WOOD DATE 6-11-71
 S. R. 64 (old U.S. 6) WEATHER RAIN
 SEC. BOWLING GREEN TEMP. +75°

DESCRIPTION _____ LEFT _____ CENTER LINE _____ RIGHT _____ JOB NO. _____



FD. P. K. Nail

NEAR COR
COLLEGE
DORMITORY
3rd BRICK UP

3F

WILLIAMS STREET



52.19'

99.34'

52.11'

95.07'

5th 16" MAPLE

5th 12" PINE