

O.D.O.T. DISTRICT 2 SURVEY OFFICE (USE ONLY)

PERSONNEL

REFERENCE NO. 3 HI

SHEET 14 OF 24

NOTES HOFFMAN

DATE 4/6/88

ROUTE SR 64

H.C. LOEHRKE

WEATHER OVERCAST

COUNTY WOOD

R.C. BARNHISEL

TEMP. 60°

TOWNSHIP CENTER

DWG BY NIESE

PID _____

SECTION 19

T 5 N R 11 E

TYPE MONUMENT P.K.

~~ON SURFACE~~ - BELOW 1 1/2"

OFFSET \odot PAVEMENT ON LT : RT

- TO - EDGE PAVEMENT

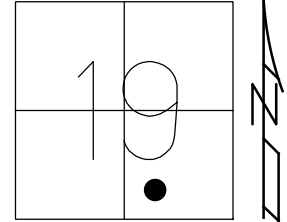
STATION: 75+27

HORZ. DATUM: _____

GEOID: _____

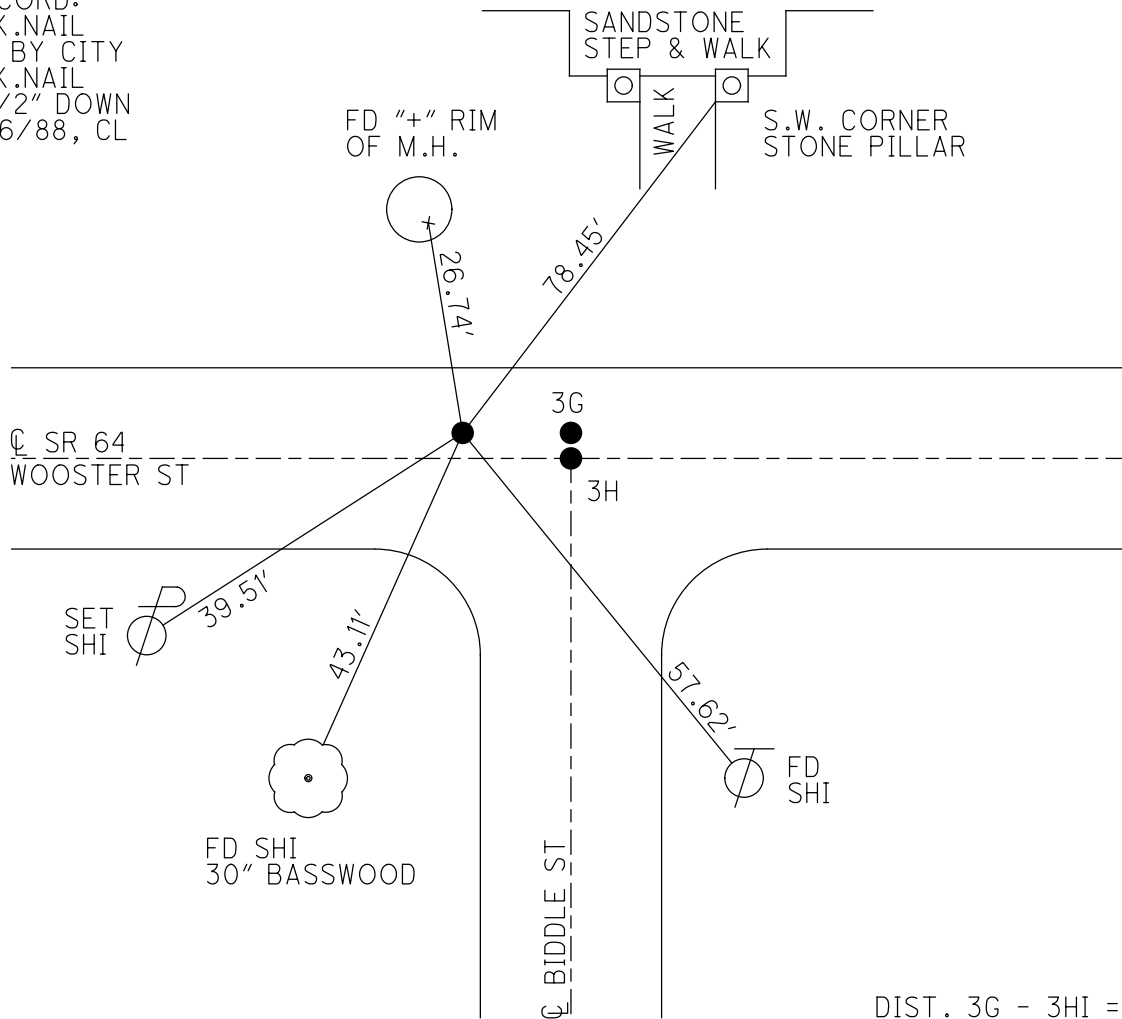
GRID: NORTHING: _____

EASTING: _____



RECORD:
P.K.NAIL
FD BY CITY
P.K.NAIL
1 1/2" DOWN
4/6/88, CL

ROGERS QUADRANGLE



DIST. 3G - 3HI = 4.50'

O.D.O.T. DISTRICT 2 SURVEY OFFICE

PERSONNEL

REFERENCE NO. 36, 3H, 3HI SHEET OF

NOTES HOFFMAN

H.C. LOEHRKE

R.G. BARNHISEL

DATE 4-6-88

WEATHER OVERCAST

TEMP. 60°

ROUTE SR 64

COUNTY Wood

TOWNSHIP Center

SECTION 19

T 5 N R 11 E

TYPE MONUMENT P.K.'s

ON SURFACE - BELOW

~~LEFT~~ & PAV'T. - ~~RIGHT~~ Both Points

 TO EDGE PAVEMENT

S.L.M. 75+27 (EAST POINTS)

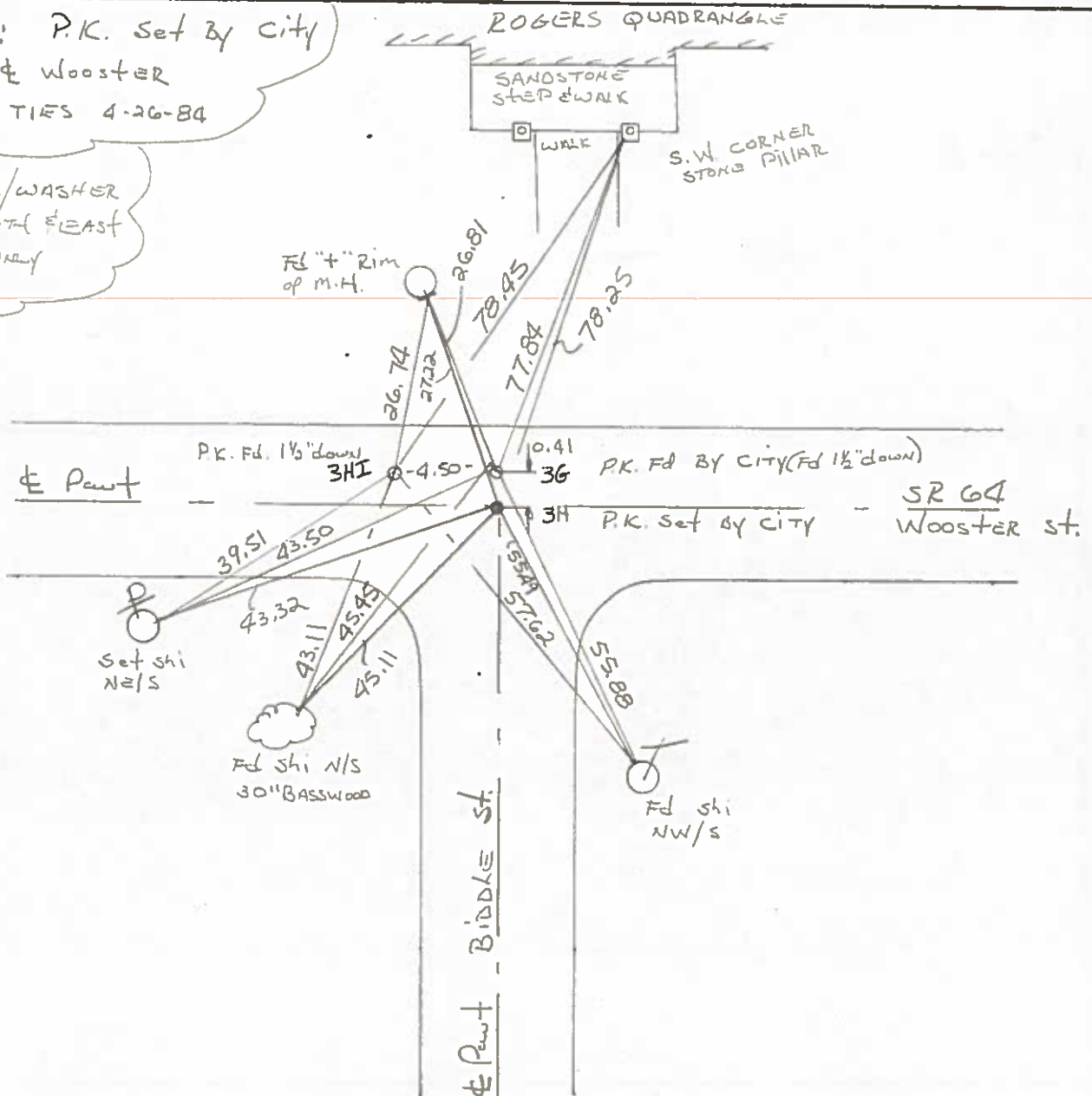
Set P.K./WASHER
6-10-88 SWK

1	9
SR	64



NOTE: P.K. set by city
ON & Wooster
Ref. TIES 4-26-84

Set P.K./WASHER
AT SOUTH EAST
Point only



County WOOD S.R. 64

Date 9-13-79

Township CENTER B.G. CORP.

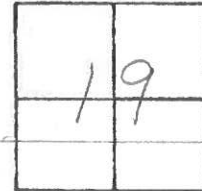
Weather CLOUDY

Section 19

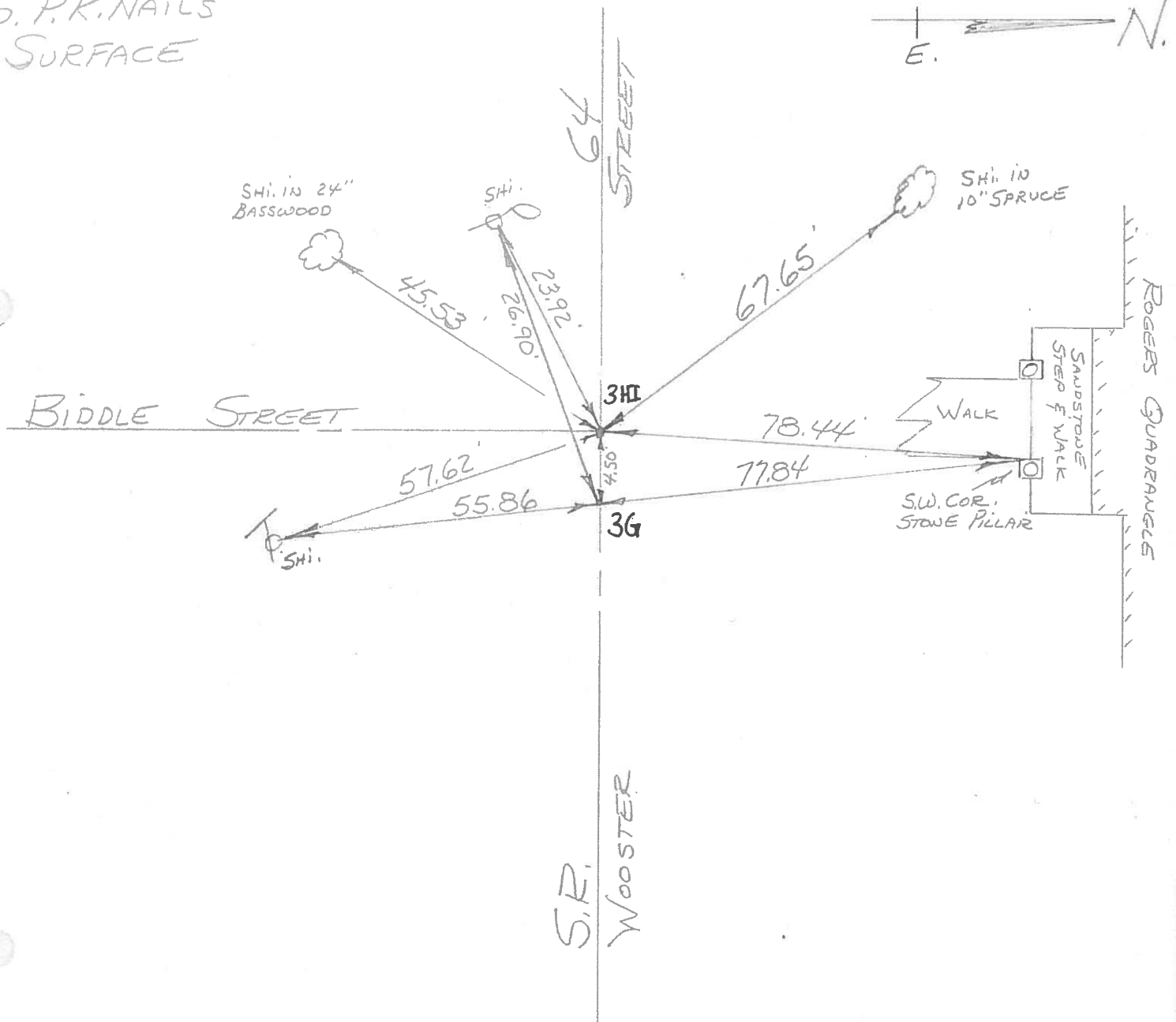
Temp. +78°

T5N, R11E

Personnel BURNSIDE
SMITH
BOWERS
MEAD



ED. P.K. NAILS
SURFACE



PERSONNEL	TITLE	PERSONNEL	TITLE
<u>BURNSIDE</u>		<u>ROCCHINI</u>	
<u>SMITH</u>			
<u>BOWERS</u>			
<u>HOLCOMBE</u>			

COUNTY WOOD DATE 6-11-71
 S. R. 64 (OLD U.S. 6) WEATHER CLOUDY
 SEC. BOWLING GREEN TEMP. +75°

DESCRIPTION _____ LEFT _____ CENTER LINE _____ RIGHT _____ JOB NO. _____

