

O.D.O.T. DISTRICT 2 SURVEY OFFICE (USE ONLY)

PERSONNEL

REFERENCE NO. 3 M

SHEET 20 OF 24

NOTES HOFFMAN

DATE 4/6/88

ROUTE SR 64

H.C. LOEHRKE

WEATHER OVERCAST

COUNTY WOOD

R.C. BARNHISEL

TEMP. 60°

TOWNSHIP CENTER

SECTION 19

DWG BY NIESE

PID _____

T 5 N R 11 E

TYPE MONUMENT P.K. NAIL

~~ON SURFACE~~ - BELOW 1"

OFFSET Q PAVEMENT ON LT : RT

- TO - EDGE PAVEMENT

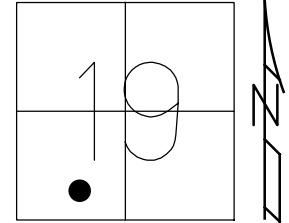
STATION: 94+05

HORZ. DATUM: _____

GEOID: _____

GRID: NORTHING: _____

EASTING: _____



RECORD:
FD P.K. NAIL
1" DOWN
4/6/88, CL
SET P.K./WASHER
6/10/88, SWN

NEAR CORNER
STEEL BASE OF
TRAFFIC LIGHT POLE



50.64'

DIST. 3LM-3M = 97.13'

NEAR SIDE OF
ROUND POLE AT
TOP OF BASE



50.99'

3LM

Q SR 64
WOOSTER ST

43.33'

FD
SHI



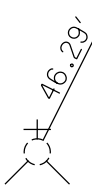
44.89'

NEAR CORNER
BASE OF TRAFFIC
LIGHT POLE



65.82' REC

NEAR SIDE
HYD BASE
AT WALK



46.29'

N.W. COR.
CONC BASE
FDN #536

Q MANVILLE AVE

O.D.O.T. DISTRICT 2 SURVEY OFFICE

PERSONNEL

REFERENCE NO. 3M

SHEET OF

NOTES HOFFMAN

H.C. LOEHRLER

DATE 4-6-88

ROUTE SR 64

R.C. BARNHISEL

WEATHER OVERCAST

COUNTY Wood

TEMP. 60°

TOWNSHIP Center

SECTION 19

T5 N R 11 E

TYPE MONUMENT P.K. Nail

ON-SURFACE - BELOW 1"

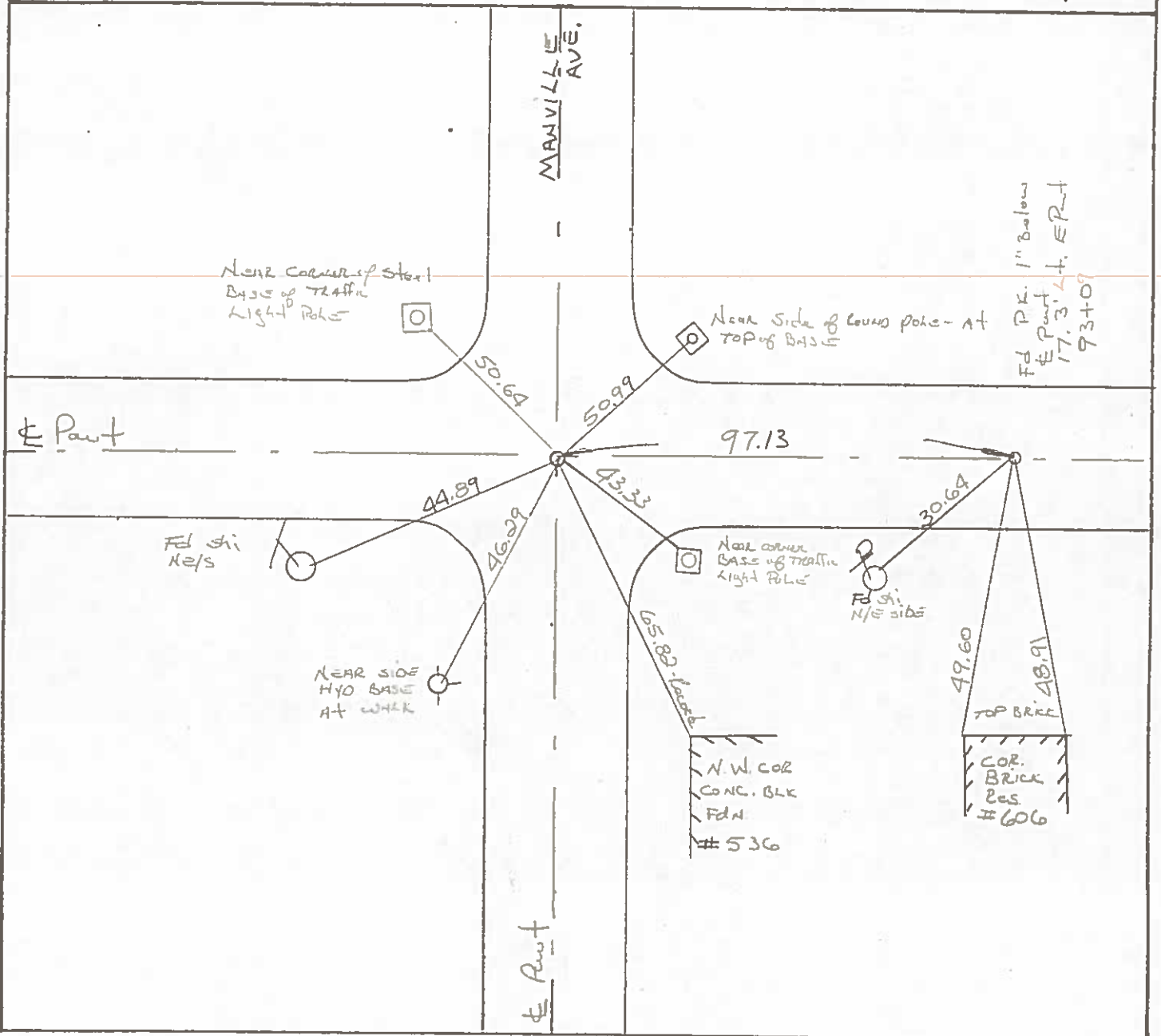
LEFT- & PAV'T. - RIGHT BOTH Points

TO EDGE PAVEMENT

S.L.M. 94+05

Set P.K./WASHER
at BOTH points
6-10-88 SWK

| | |
|----|----|
| 1 | 9 |
| SR | 64 |



County WOOD S.R. 64

Date 9-13-79

Township CENTER B.G. CORP

Weather CLOUDY

Section 19

Temp. +78°

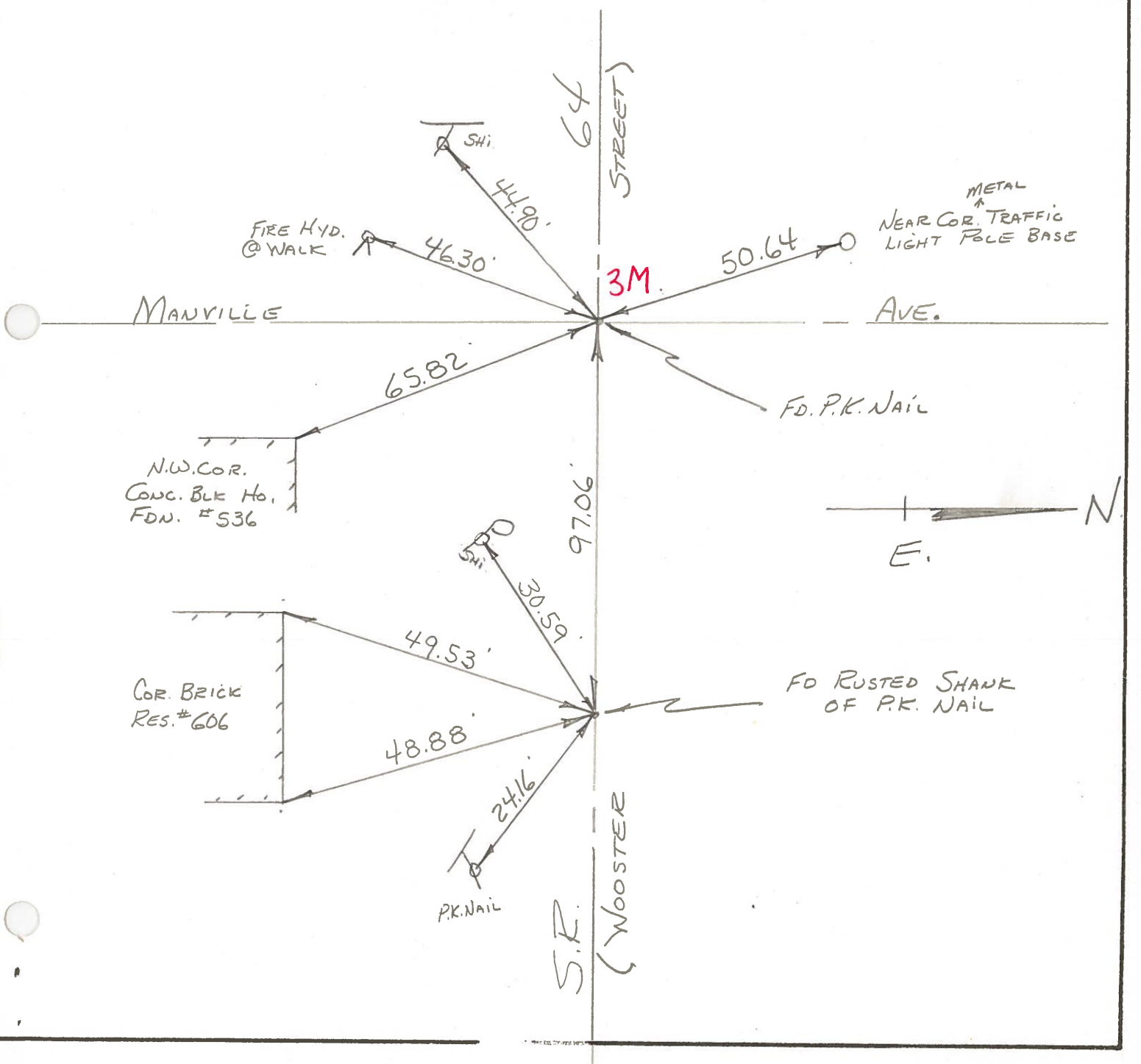
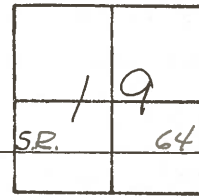
T5N, R11E

Personnel BURNSIDE

SMITH

BOWERS

MEAD



| PERSONNEL | TITLE | PERSONNEL | TITLE |
|-----------|-------|-----------|-------|
| BURNSIDE | | Rocchini | |
| SMITH | | | |
| BOWERS | | | |
| HOLCOMBE | | | |

COUNTY WOOD DATE 6-11-71
 S. R. 64 (OLD U.S. 6) WEATHER CLEAR
 SEC. BOWLING GREEN TEMP. +72°

DESCRIPTION BEGIN POINT CHECK (EAST TO S.R. 105) JOB NO. _____

