

O.D.O.T. DISTRICT 2 SURVEY OFFICE (USE ONLY)

PERSONNEL

REFERENCE NO. 3 "O"

SHEET 22 OF 24

NOTES HOFFMAN

DATE 4/7/88

ROUTE SR 64

H.C. LOEHRKE

WEATHER OVERCAST

COUNTY WOOD

R.C. BARNHISEL

TEMP. 44°

TOWNSHIP CENTER

REED

SECTION 19

DWG BY NIESE PID _____

T 5 N R 11 E

TYPE MONUMENT R.R. SPIKE W/ "+"

ON SURFACE - ~~BELOW~~ ON

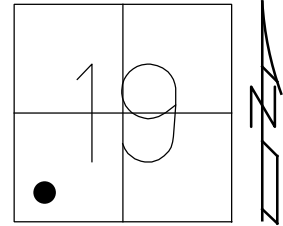
OFFSET Q PAVEMENT ON LT : RT

- TO - EDGE PAVEMENT

STATION: 102+02

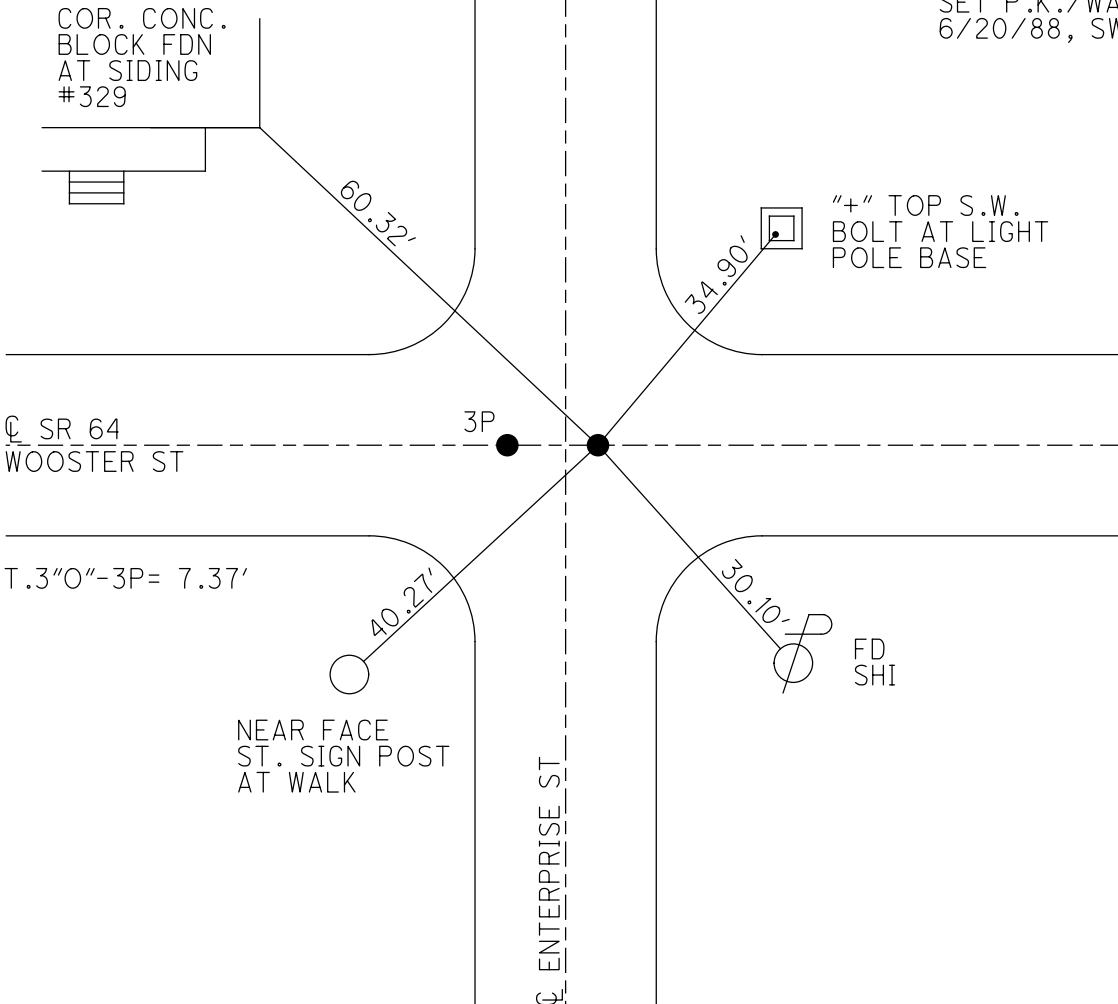
HORZ. DATUM: _____ GEOID: _____

GRID: NORTHING: _____ EASTING: _____



RECORD:
R.R. SPIKE W/ "+"
4/7/88, CL
SET P.K./WASHER
6/20/88, SWN

COR. CONC.
BLOCK FDN
AT SIDING
#329



"+" TOP S.W.
BOLT AT LIGHT
POLE BASE

Q SR 64
WOOSTER ST

DIST. 3"O"-3P= 7.37'

NEAR FACE
ST. SIGN POST
AT WALK

Q ENTERPRISE ST

FD
SHI

O.D.O.T. DISTRICT 2 SURVEY OFFICE

PERSONNEL

REFERENCE NO. 30", 3P

SHEET OF

NOTES Hoffman

H.C. Loehrke

DATE 4-7-88

ROUTE SR 64

R.C. Barnhiser

WEATHER OVERCAST

COUNTY Wood

Reed

TEMP. 44°

TOWNSHIP Center

SECTION 19

T.5. N. R. 11. E

TYPE MONUMENT R.R. SPIKES / "t"

ON SURFACE - BELOW yes

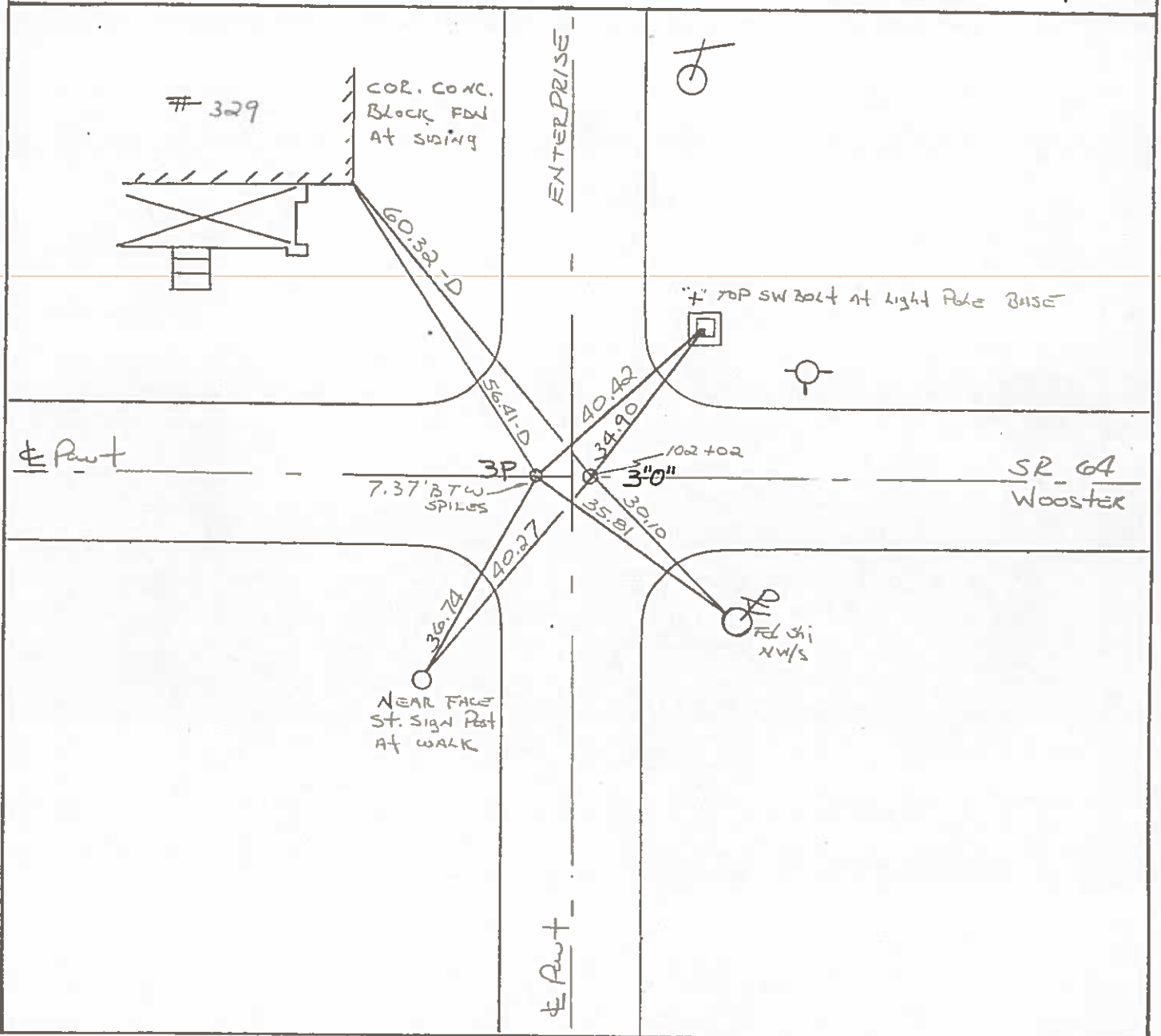
LEFT- & PAV'T. - RIGHT yes - ALL 3 Pnts

TO EDGE PAVEMENT

S.L.M. 102 + 02

Set PK/WASHER
at both points
6-20-88 SWK

1	9
SR	64



County Wood S.R. 64

Date 9-13-79

Township CENTER (B.G. COEP)

Weather CLOUDY

Section 19

Temp. +78°

T/S N, R/E

Personnel BURNSIDE

SMITH

BOWERS

MEAD

19	
S.R.	64



FD. P.K. NAIL @
 SURFACE.
ORIGIN & USE UNKNOWN
 ON WEST CURB LINE OF
 ENTERPRISE ST. NORTH

