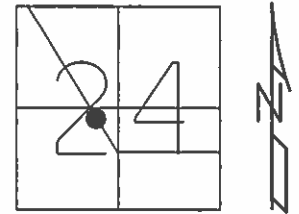


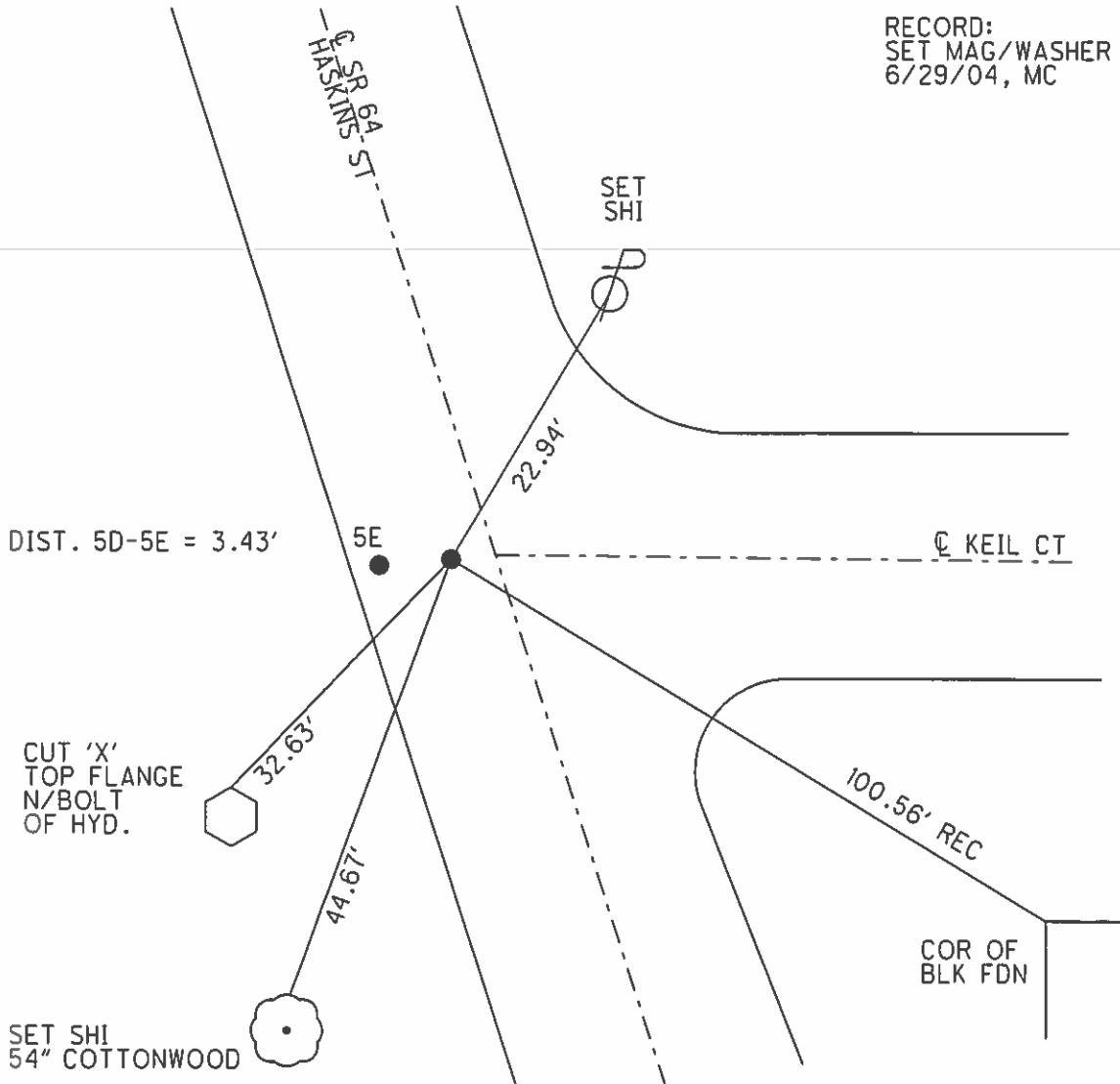
O.D.O.T. DISTRICT 2 SURVEY OFFICE (USE ONLY)

PERSONNEL \_\_\_\_\_ REFERENCE NO. 5 D SHEET 11 OF 31  
 NOTES CANTERBURY DATE 04/29/04 ROUTE SR 64  
 H.C. BARNHISEL WEATHER CLEAR COUNTY WOOD  
 R.C. HUSS TEMP. 70° TOWNSHIP PLAIN  
 SECTION 24  
 T 5 N R 10 E

TYPE MONUMENT P.K.NAIL  
 ON SURFACE - ~~BELOW~~ ON \_\_\_\_\_  
 LEFT - ☉ PAV'T - RIGHT 5.3'  
5.6' TO LT EDGE PAVEMENT  
 S.L.M. 153+18  
 GRID: NORTHING: \_\_\_\_\_ EASTING: \_\_\_\_\_



RECORD:  
 SET MAG/WASHER  
 6/29/04, MC



# O.D.O.T. DISTRICT 2 SURVEY OFFICE

PERSONNEL \_\_\_\_\_ REFERENCE NO. \_\_\_\_\_ SHEET \_\_\_\_\_ OF \_\_\_\_\_

NOTES HOFFMAN

H.C. LOEHRKE

R.C. REED

DATE 4-14-88

WEATHER CLEAR-WINDY

TEMP. 49°

ROUTE SR 64

COUNTY WOOD

TOWNSHIP PLAIN

SECTION 24

T. 5 N. R. 10 E

TYPE MONUMENT P.K.

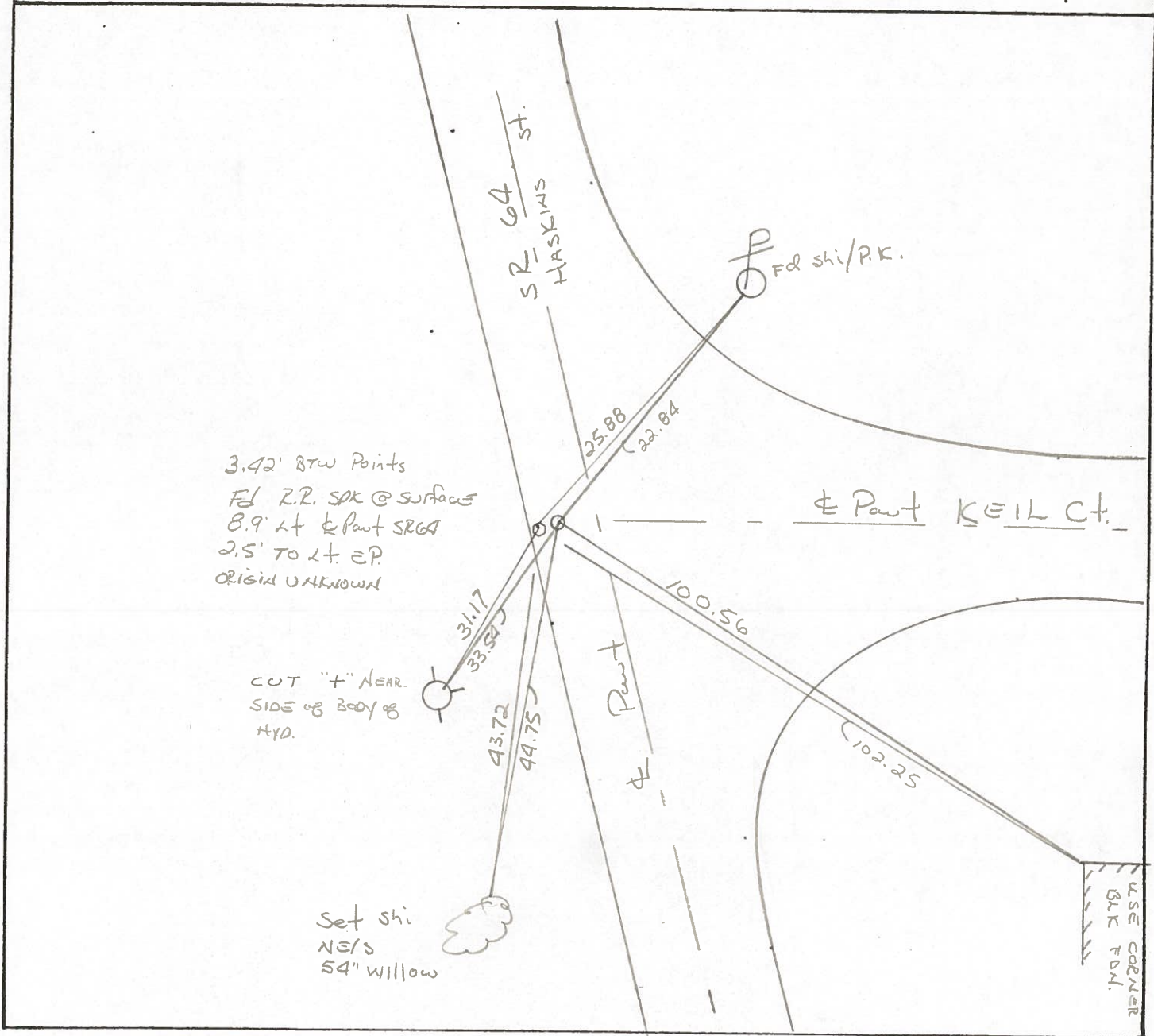
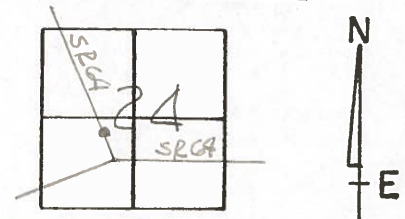
ON SURFACE BELOW YES

LEFT-~~C~~ PAV'T. - RIGHT 5.3

5.6 TO LT EDGE PAVEMENT

S.L.M. 154+18

50 ± 5E



# O.D.O.T. DISTRICT 2 SURVEY OFFICE

PERSONNEL \_\_\_\_\_ REFERENCE NO. \_\_\_\_\_ SHEET \_\_\_\_\_ OF \_\_\_\_\_

NOTES HOFFMAN

H.C. LOEHKE

R.C. REED

DATE 4-14-88

WEATHER CLEAR-WINDY

TEMP. 49°

ROUTE SR 64

COUNTY WOOD

TOWNSHIP PLAIN

SECTION 24

T 5 N R 10 E

TYPE MONUMENT P.K.

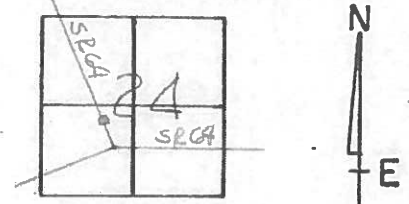
5D ± 5E

ON SURFACE - BELOW YES

LEFT - PAV'T. - RIGHT 5, 3

5.6 TO LT EDGE PAVEMENT

S.L.M. 154 + 18



3.42' BTW Points  
 Fd R.R. SRK @ surface  
 8.9' Lt & Paut SR 64  
 2.5' TO Lt. EP  
 ORIGINAL UNKNOWN

CUT "+" NEAR  
 SIDE OF BODY OF  
 HYD.

Set shi  
 NE/S  
 54" willow

