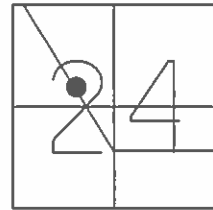


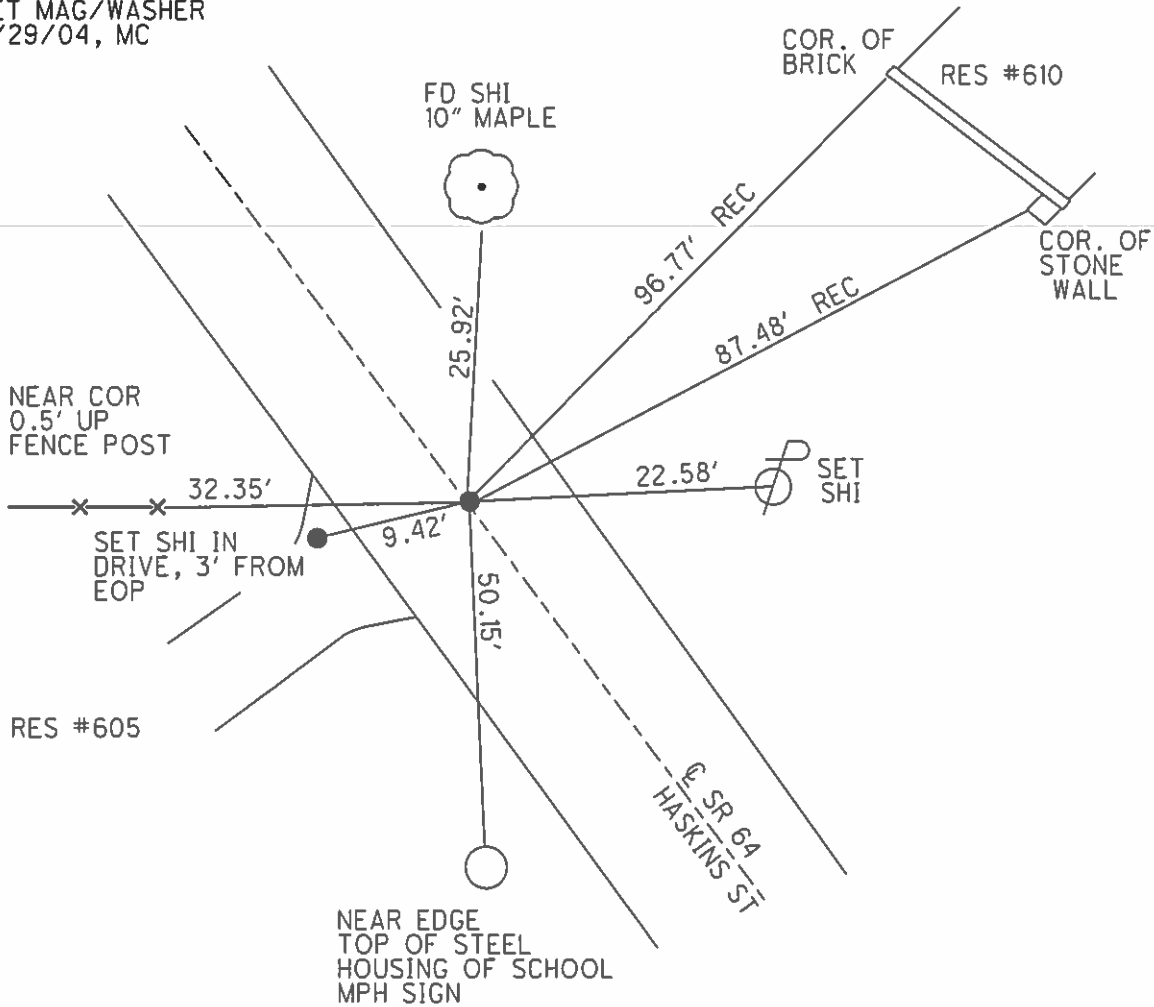
O.D.O.T. DISTRICT 2 SURVEY OFFICE (USE ONLY)

PERSONNEL _____ REFERENCE NO. 5 G SHEET 14 OF 31
 NOTES CANTERBURY DATE 04/30/04 ROUTE SR 64
 H.C. BARNHISEL WEATHER CLEAR COUNTY WOOD
 R.C. HUSS TEMP. 75° TOWNSHIP PLAIN
 SECTION 24
 T 5 N R 10 E

TYPE MONUMENT P.K./WASHER
 ON SURFACE - ~~BELOW~~ ON
 LEFT - ☉ PAV'T - ~~RIGHT~~ 3.7'
5.9' TO LT EDGE PAVEMENT
 S.L.M. 161+40
 GRID: NORTHING: _____ EASTING: _____



RECORD:
 SET MAG/WASHER
 6/29/04, MC



O.D.O.T. DISTRICT 2 SURVEY OFFICE

PERSONNEL _____

REFERENCE NO. 5G

SHEET _____ OF _____

NOTES HOFFMAN

H.C. LOSHKUS

R.C. REED

DATE 4-14-88

WEATHER Windy - CLEAR

TEMP. 49°

ROUTE SR 64

COUNTY Wagon

TOWNSHIP PLAIN

SECTION 24

T 5 N R 10 E

TYPE MONUMENT Pk. Nail

Set Pk./WASHER

~~ON SURFACE~~ - BELOW 1 1/2"

6-9-88 SWA

LEFT - ~~0~~ PAV'T. - RIGHT 4.0

7.0 TO Lt. EDGE PAVEMENT

S.L.M. 162 + 40

