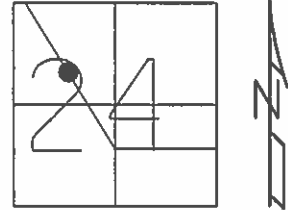


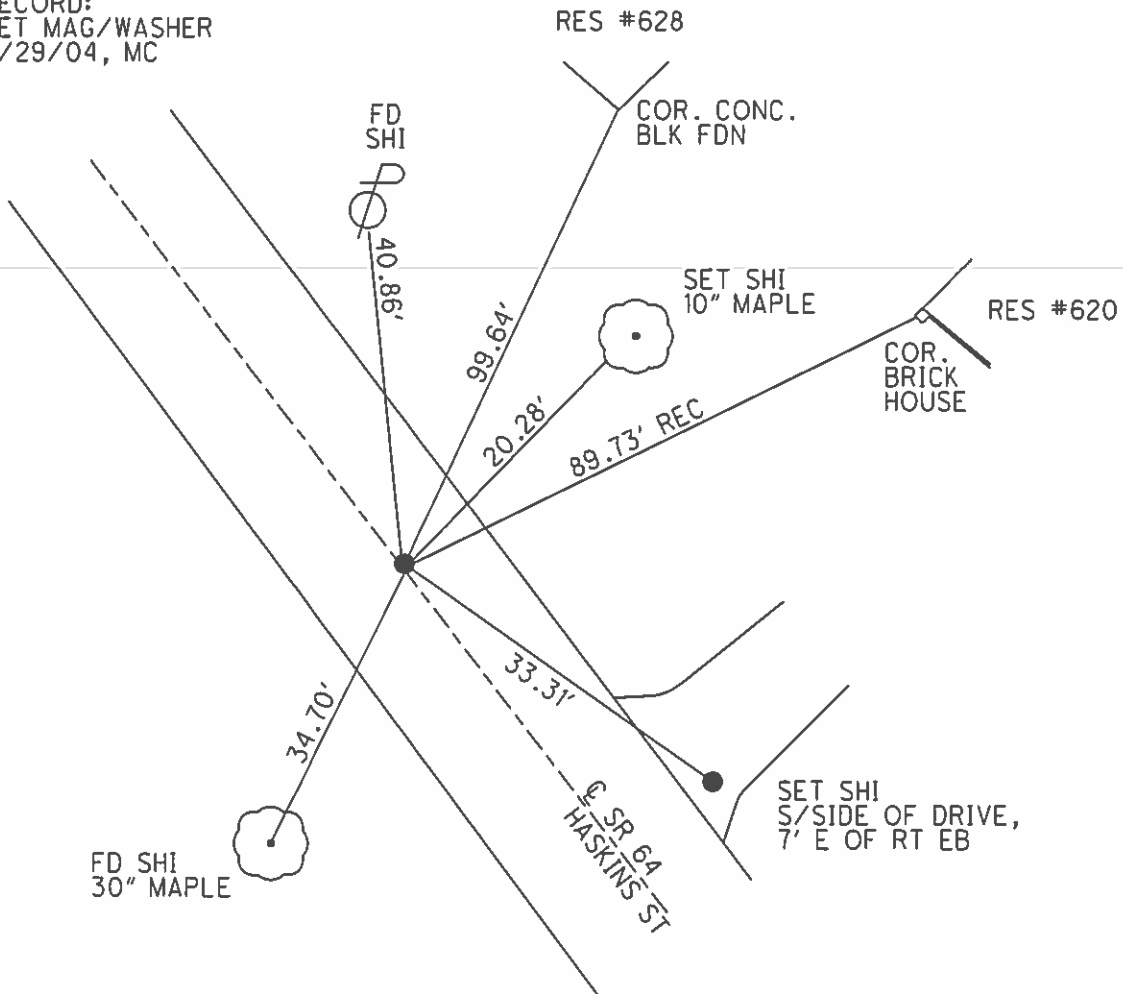
O.D.O.T. DISTRICT 2 SURVEY OFFICE (USE ONLY)

PERSONNEL _____ REFERENCE NO. 5 H SHEET 15 OF 31
 NOTES CANTERBURY DATE 04/29/04 ROUTE SR 64
 H.C. BARNHISEL WEATHER CLEAR COUNTY WOOD
 R.C. HUSS TEMP. 75° TOWNSHIP PLAIN
 _____ SECTION 24
 _____ T 5 N R 10 E

TYPE MONUMENT _____ P.K./WASHER _____
 ON SURFACE - ~~BELOW~~ _____ ON _____
 LEFT - ☉ PAV'T - ~~RIGHT~~ _____ 3.2' _____
6.3' TO LT EDGE PAVEMENT
 S.L.M. _____ 163+69
 GRID: NORTHING: _____ EASTING: _____



RECORD:
 SET MAG/WASHER
 6/29/04, MC



O.D.O.T. DISTRICT 2 SURVEY OFFICE

PERSONNEL _____

REFERENCE NO. 5H

SHEET _____ OF _____

NOTES HOFFMAN

H.C. LOSHRKE

R.C. REED

DATE 4-14-88

WEATHER CLEARLY Windy

TEMP. 49°

ROUTE SR 64

COUNTY WOOD

TOWNSHIP PLAIN

SECTION 24

T 5 N R 10 E

TYPE MONUMENT P.K.

ON SURFACE - BELOW YES

LEFT - C PAV'T. - RIGHT 3.5'

6.8 TO LT. EDGE PAVEMENT

S.L.M. 164+69

Set P.K. WASHER
6-9-88 SWK

