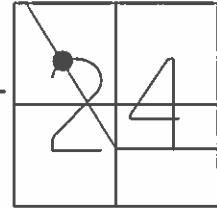


O.D.O.T. DISTRICT 2 SURVEY OFFICE (USE ONLY)

PERSONNEL \_\_\_\_\_ REFERENCE NO. 51 SHEET 16 OF 31  
 NOTES CANTERBURY DATE 04/30/04 ROUTE SR 64  
 H.C. BARNHISEL WEATHER CLEAR COUNTY WOOD  
 R.C. HUSS TEMP. 75° TOWNSHIP PLAIN  
 SECTION 24  
 T 5 N R 10 E

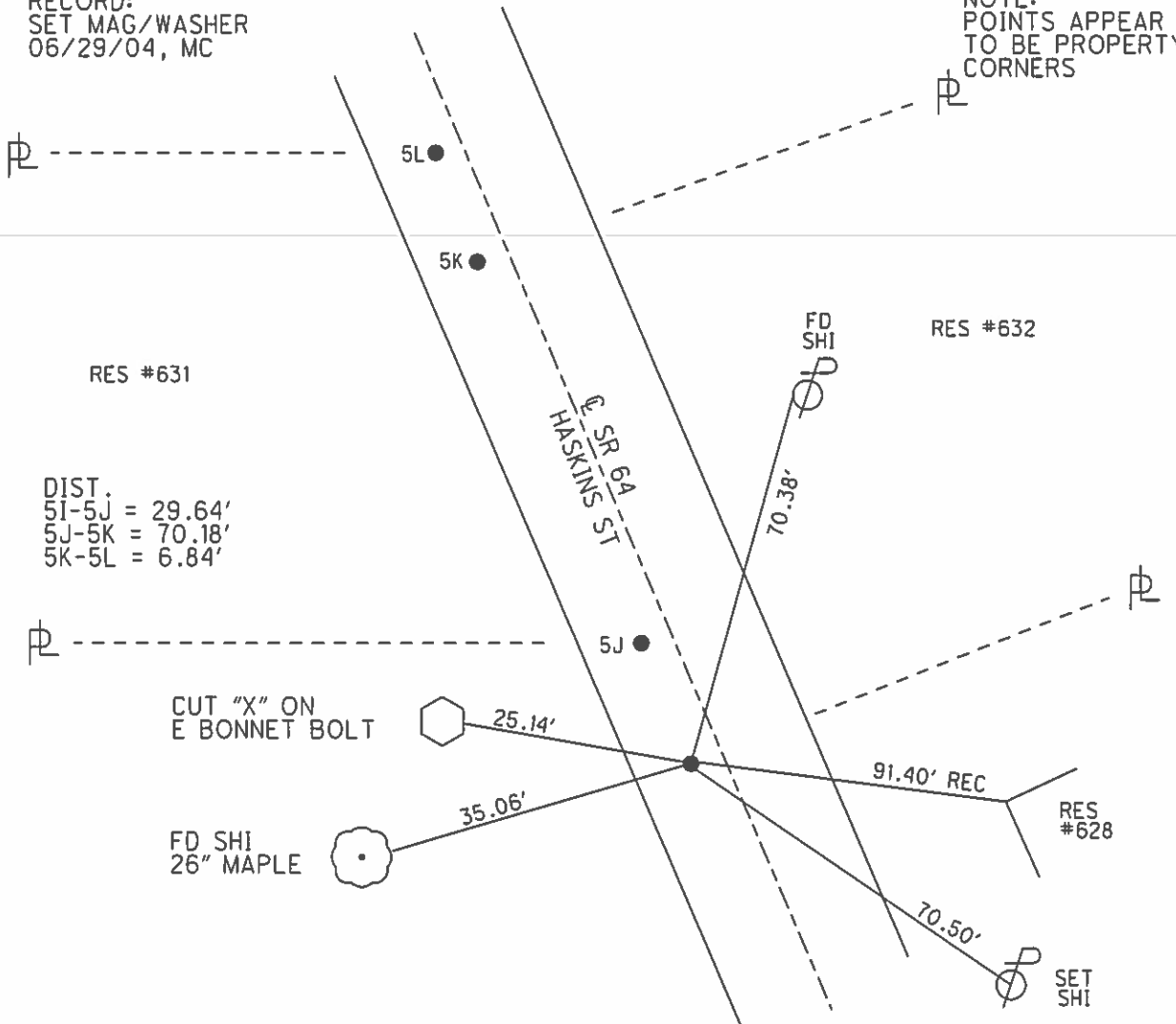
TYPE MONUMENT P.K.SHANK  
 ON SURFACE - ~~BELOW~~ ON \_\_\_\_\_  
 LEFT - ☉ PAV'T = ~~RIGHT~~ 2.6'  
7.2' TOLT EDGE PAVEMENT  
 S.L.M. 164+70



GRID: NORTHING: \_\_\_\_\_ EASTING: \_\_\_\_\_

RECORD:  
 SET MAG/WASHER  
 06/29/04, MC

NOTE:  
 POINTS APPEAR  
 TO BE PROPERTY  
 CORNERS



DIST.  
 5I-5J = 29.64'  
 5J-5K = 70.18'  
 5K-5L = 6.84'

CUT "X" ON  
 E BONNET BOLT

FD SHI  
 26" MAPLE

RES #632

RES #628

SET  
 SHI

# O.D.O.T. DISTRICT 2 SURVEY OFFICE

PERSONNEL \_\_\_\_\_ REFERENCE NO. \_\_\_\_\_ SHEET \_\_\_\_\_ OF \_\_\_\_\_

NOTES LOFFMAN

H.C. LOSHRKE

R.C. REED

DATE 4-14-88

WEATHER windy - P. CLEAR

TEMP. 49°

ROUTE SR 64

COUNTY WOOD

TOWNSHIP PLAIN

SECTION 24

T 5 N R 10 E

TYPE MONUMENT "A" = SMALL RR SPK / "B" = P.K.

ON SURFACE - BELOW 2" Below / surface

LEFT - C PART - RIGHT 2.4 / 1.2

8.0' / 9.0' TO 1.4' / 2.4' EDGE PAVEMENT

S.L.M. 166+00 / 166+77

Set P.K. / washer  
at all points  
6-9-88 SWH

