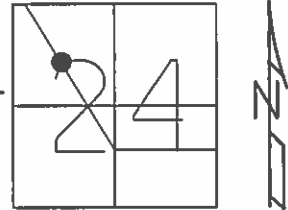


O.D.O.T. DISTRICT 2 SURVEY OFFICE (USE ONLY)

PERSONNEL _____ REFERENCE NO. 5 L SHEET 19 OF 31
 NOTES CANTERBURY DATE 04/30/04 ROUTE SR 64
 H.C. BARNHISEL WEATHER CLEAR COUNTY WOOD
 R.C. HUSS TEMP. 75° TOWNSHIP PLAIN
 SECTION 24
 T 5 N R 10 E

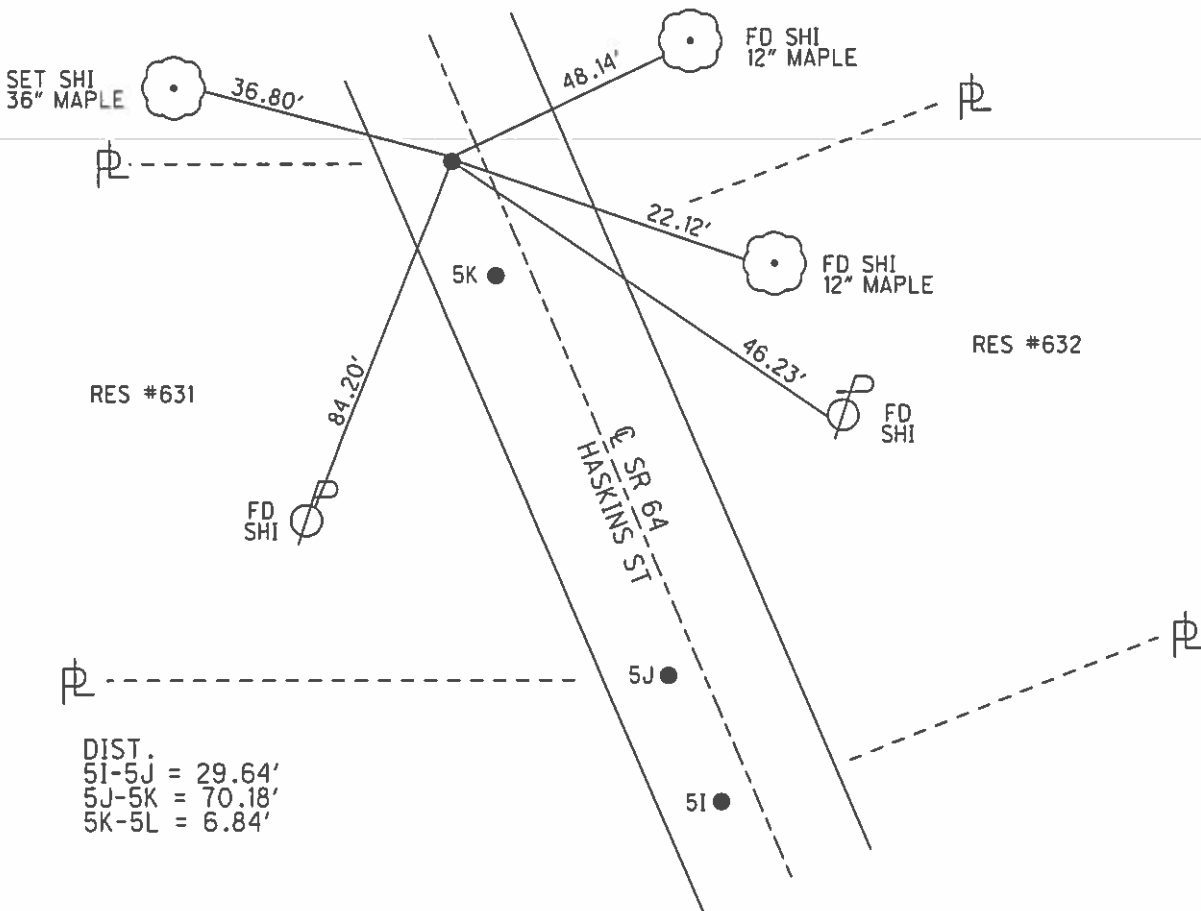
TYPE MONUMENT P.K./WASHER
 ON SURFACE - ~~BELOW~~ ON _____
 LEFT - ☉ PAV'T = ~~RIGHT~~ 1.4'
7.8' TOLT EDGE PAVEMENT
 S.L.M. 165+77



GRID: NORTHING: _____ EASTING: _____

RECORD:
 SET MAG/WASHER
 06/29/04, MC

NOTE:
 POINTS APPEAR
 TO BE PROPERTY
 CORNERS



DIST.
 5I-5J = 29.64'
 5J-5K = 70.18'
 5K-5L = 6.84'

O.D.O.T. DISTRICT 2 SURVEY OFFICE

PERSONNEL _____

REFERENCE NO. _____

SHEET _____ OF _____

NOTES LOFFMAN

H.C. LOSHRKE

DATE 4-14-88

ROUTE SR 64

R.C. REED

WEATHER windy - P. CLEAR

COUNTY WOOD

TEMP. 49°

TOWNSHIP PLAIN

SECTION 24

T 5 N R 10 E

TYPE MONUMENT "A" = SMALL RR SPK / "B" = P.K.

ON SURFACE - BELOW 2" Below / surface

LEFT - C PART - RIGHT 2.4 / 1.2

8.0' TO 1.4' / 9.0' TO 2.7' EDGE PAVEMENT

S.L.M. 166+00 / 166+77

Set P.K. / washer
at all points
6-9-88 SWH

