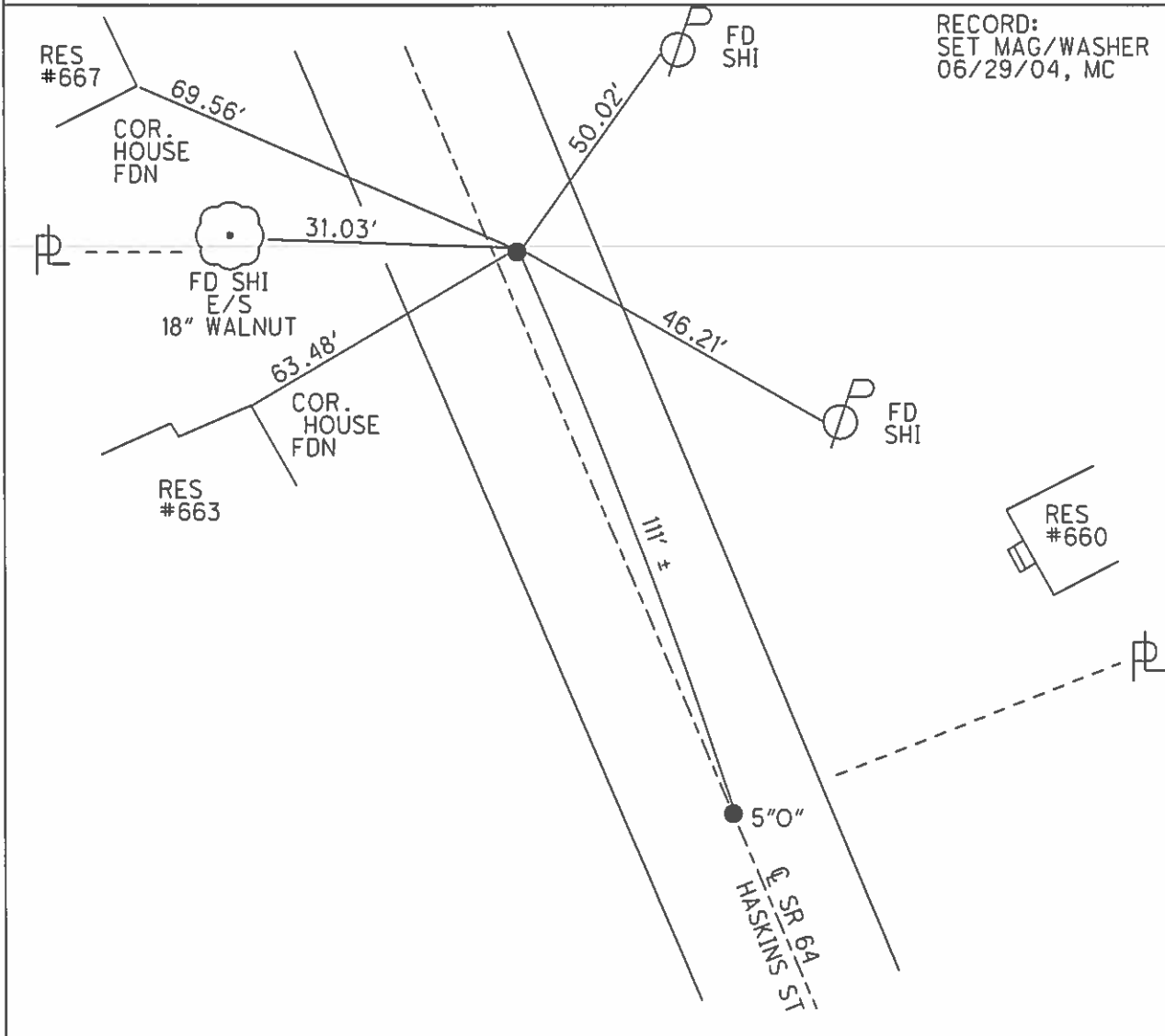
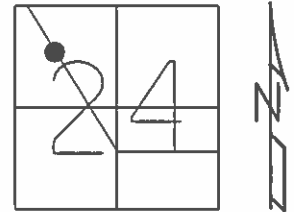


**O.D.O.T. DISTRICT 2 SURVEY OFFICE (USE ONLY)**

PERSONNEL \_\_\_\_\_ REFERENCE NO. 5 P SHEET 23 OF 31  
 NOTES CANTERBURY DATE 05/03/04 ROUTE SR 64  
 H.C. BARNHISEL WEATHER CLOUDY COUNTY WOOD  
 R.C. ARMS TEMP. 42° TOWNSHIP PLAIN  
 SECTION 24  
 T 5 N R 10 E

TYPE MONUMENT P.K./WASHER  
 ON SURFACE - ~~BELOW~~ ON  
~~LEFT~~ - C PAV'T - RIGHT 2.2'  
7.4' TO RT EDGE PAVEMENT  
 S.L.M. 170+80  
 GRID: NORTHING: \_\_\_\_\_ EASTING: \_\_\_\_\_



# O.D.O.T. DISTRICT 2 SURVEY OFFICE

PERSONNEL \_\_\_\_\_

REFERENCE NO. \_\_\_\_\_

SHEET \_\_\_\_\_ OF \_\_\_\_\_

NOTES HOFFMAN

H.C. LOCHZKE

DATE 4-14-88

ROUTE SR 64

R.C. REED

WEATHER P. Cloudy

COUNTY WOOD

TEMP. 49°

TOWNSHIP PLAIN

SECTION 24

T.S. N R 10 E

TYPE MONUMENT P.K / P.K

ON SURFACE - BELOW 2 1/2 / 2 1/2

LEFT- & PAV'T. - RIGHT 2.2' / 1.9' Rt

8.6 TO RT EDGE PAVEMENT

S.L.M. 170+69 / 171+80

Set P.K. / WASHER  
6-9-88 SWOK

