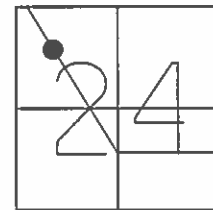


**O.D.O.T. DISTRICT 2 SURVEY OFFICE (USE ONLY)**

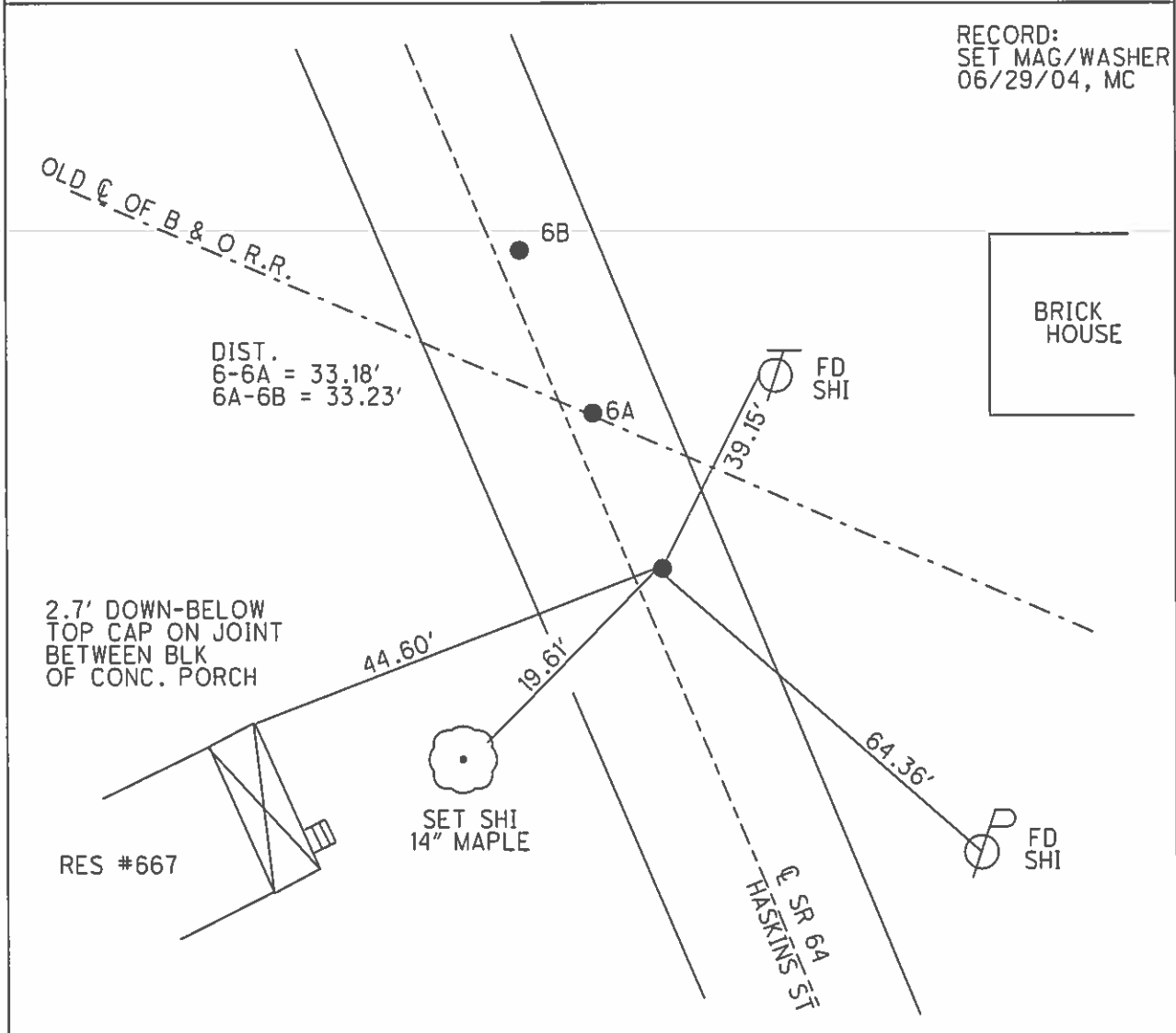
PERSONNEL \_\_\_\_\_ REFERENCE NO. 6 SHEET 24 OF 31

NOTES CANTERBURY DATE 05/03/04 ROUTE SR 64  
 H.C. BARNHISEL WEATHER CLOUDY COUNTY WOOD  
 R.C. ARMS TEMP. 45° TOWNSHIP PLAIN  
 SECTION 24  
 T 5 N R 10 E

TYPE MONUMENT P.K./WASHER  
 ON SURFACE - ~~BELOW~~ ON  
~~LEFT~~ - CL PAV'T - RIGHT 2.2'  
7.2' TO RT EDGE PAVEMENT  
 S.L.M. 171+85  
 GRID: NORTHING: \_\_\_\_\_ EASTING: \_\_\_\_\_



RECORD:  
 SET MAG/WASHER  
 06/29/04, MC



ODOT. DISTRICT 2 SURVEY OFFICE

SHEET

OF

County WOOD S.R. 64

Date 9-6-73

Township PLAIN

Weather CLEAR

Section 24

Temp. 77°

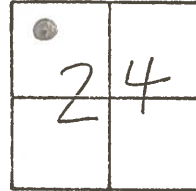
T5N, R10E

Personnel BURNSIDE

SMITH

BOWERS

MEAD



#6

RANCH COURT

R/W S.R. 64

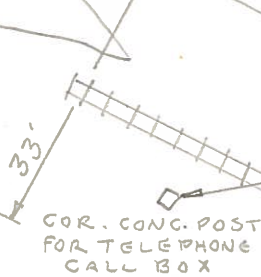
RE SET P.K.  
10-24-73

FOUND R.R. SPIKE  
ORIGIN UNKNOWN

R.R. R/W

62.40'

COR. CONC. FDN.  
OF BRICK HOUSE



41.81'

B&O.

68.44'

COR. CONC. FDN.  
OF BRICK HOUSE  
(CTR. 6<sup>TH</sup> BRICK UP)

RE SET P.K.  
10-24-73

FOUND P.K. NAIL  
ORIGIN UNKNOWN

38.80' PSHI.

R.R.

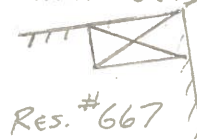
COR. CONC. BATTERY BOX

66.39'

45.45'

R.R. R/W

COR. CONC. BK.  
PORCH FDN.



73.54'

S.R. 64  
(HASKINS ST.)

64.57'

PSHI.

# O.D.O.T. DISTRICT 2 SURVEY OFFICE

PERSONNEL \_\_\_\_\_

REFERENCE NO. 6

SHEET \_\_\_\_\_ OF \_\_\_\_\_

NOTES HOFFMAN

H.C. LOSHKES

R.C. BARNHISEL

DATE 4-19-88

WEATHER CLEAR

TEMP. 48°

ROUTE SR64

COUNTY WOOD

TOWNSHIP PLAIN

SECTION 24

T5 N R 10 E

TYPE MONUMENT P.K. - R.R. SOK

ON SURFACE - BELOW YES - 2" below

~~LEFT - C PAV'T.~~ - RIGHT 2.0' - 2.0'

7.8 TO RT EDGE PAVEMENT

S.L.M. 172+85 - 173+52

Set P.K./waster  
at all points  
6-9-88 SOK

