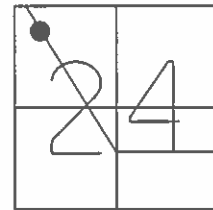


O.D.O.T. DISTRICT 2 SURVEY OFFICE (USE ONLY)

PERSONNEL \_\_\_\_\_ REFERENCE NO. 6 E SHEET 29 OF 31  
 NOTES CANTERBURY DATE 05/03/04 ROUTE SR 64  
 H.C. BARNHESEL WEATHER CLOUDY COUNTY WOOD  
 R.C. ARMS TEMP. 45° TOWNSHIP PLAIN  
 SECTION 24  
 T 5 N R 10 E

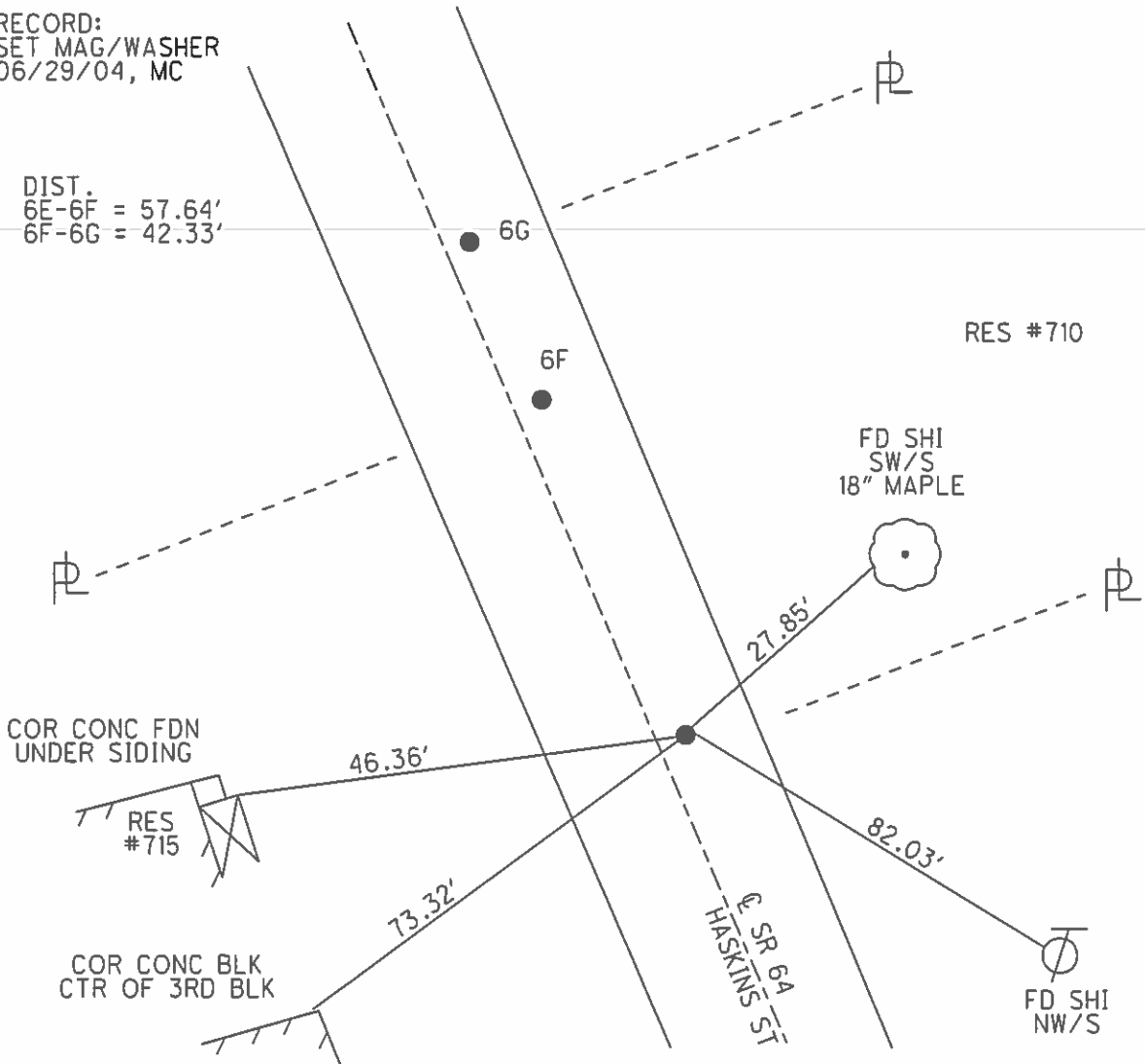
TYPE MONUMENT P.K.NAIL  
~~ON SURFACE~~ - BELOW 2"  
~~LEFT~~ - CL PAV'T - RIGHT 3.4'  
6.3' TO RT EDGE PAVEMENT  
 S.L.M. 175+26



GRID: NORTHING: \_\_\_\_\_ EASTING: \_\_\_\_\_

RECORD:  
 SET MAG/WASHER  
 06/29/04, MC

DIST.  
 6E-6F = 57.64'  
 6F-6G = 42.33'



# O.D.O.T. DISTRICT 2 SURVEY OFFICE

PERSONNEL \_\_\_\_\_

REFERENCE NO. \_\_\_\_\_

SHEET \_\_\_\_\_ OF \_\_\_\_\_

NOTES Hoffman

H.C. Loehrer

R.C. Barnhisel

DATE 4-19-88

WEATHER Clear

TEMP. 48°

ROUTE SR 64

COUNTY Wood

TOWNSHIP PLAIN

SECTION 24

T 5 N R 10 E

TYPE MONUMENT P.K. - P.K. - small R.R. spike

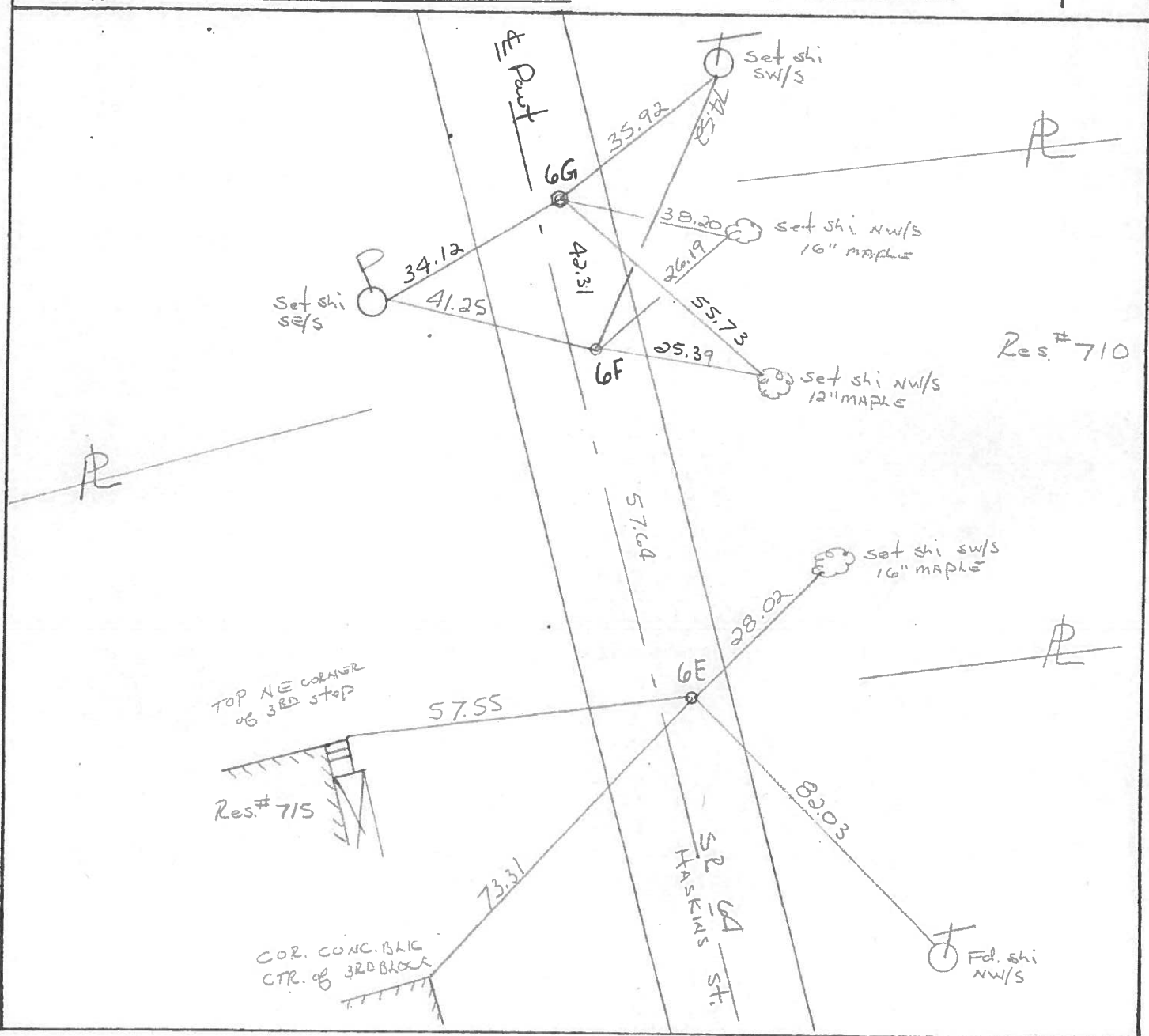
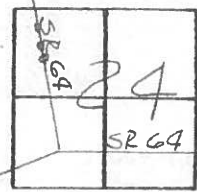
ON SURFACE - BELOW yes - yes - 2" below

LEFT - C PAVT. - RIGHT 3.5' - 2.8' - 2.7'

7.0 TO RT EDGE PAVEMENT

S.L.M. 176+26 - 176+84 - 177+26

Set P.K. washer  
6-9-88



Res. # 710

TOP NE CORNER  
of 3RD STOP

Res. # 715

COR. CONC. BLK  
CTR. of 3RD STOP

SR 64  
HASKINS  
ST.

Fd. shi  
NW/S