

**O.D.O.T. DISTRICT 2 SURVEY OFFICE USE ONLY**

PERSONNEL \_\_\_\_\_ REFERENCE NO. 7 SHEET 1 OF 32

NOTES	<u>WESTFALL</u>	DATE	<u>06-05-13</u>	ROUTE	<u>SR 64</u>
H.C.	<u>ROUSOS</u>	WEATHER	<u>CLEAR</u>	COUNTY	<u>WOOD</u>
R.C.	<u>RHOADES</u>	TEMP.	<u>68° F</u>	TOWNSHIP	<u>PLAIN</u>
				SECTION	<u>14</u>
				T	<u>5 N</u>
				R	<u>10 E</u>

TYPE MONUMENT MAG NAIL & WASHER

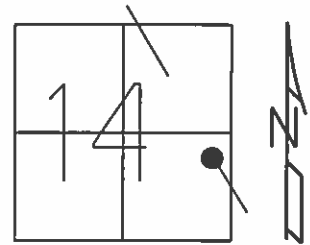
ON SURFACE - ~~BELOW~~ YES

~~LEFT~~ - C PAV'T - RIGHT 0.8'

8.5' TO RT EDGE PAVEMENT

S.L.M. 214+07

Grid: Northing: 631,026.251 Easting: 1,646,643.263



NOTE:  
GRID COORDINATES ARE FROM WHEN POINT WAS REFERENCED NOT WHEN POINT WAS RESET

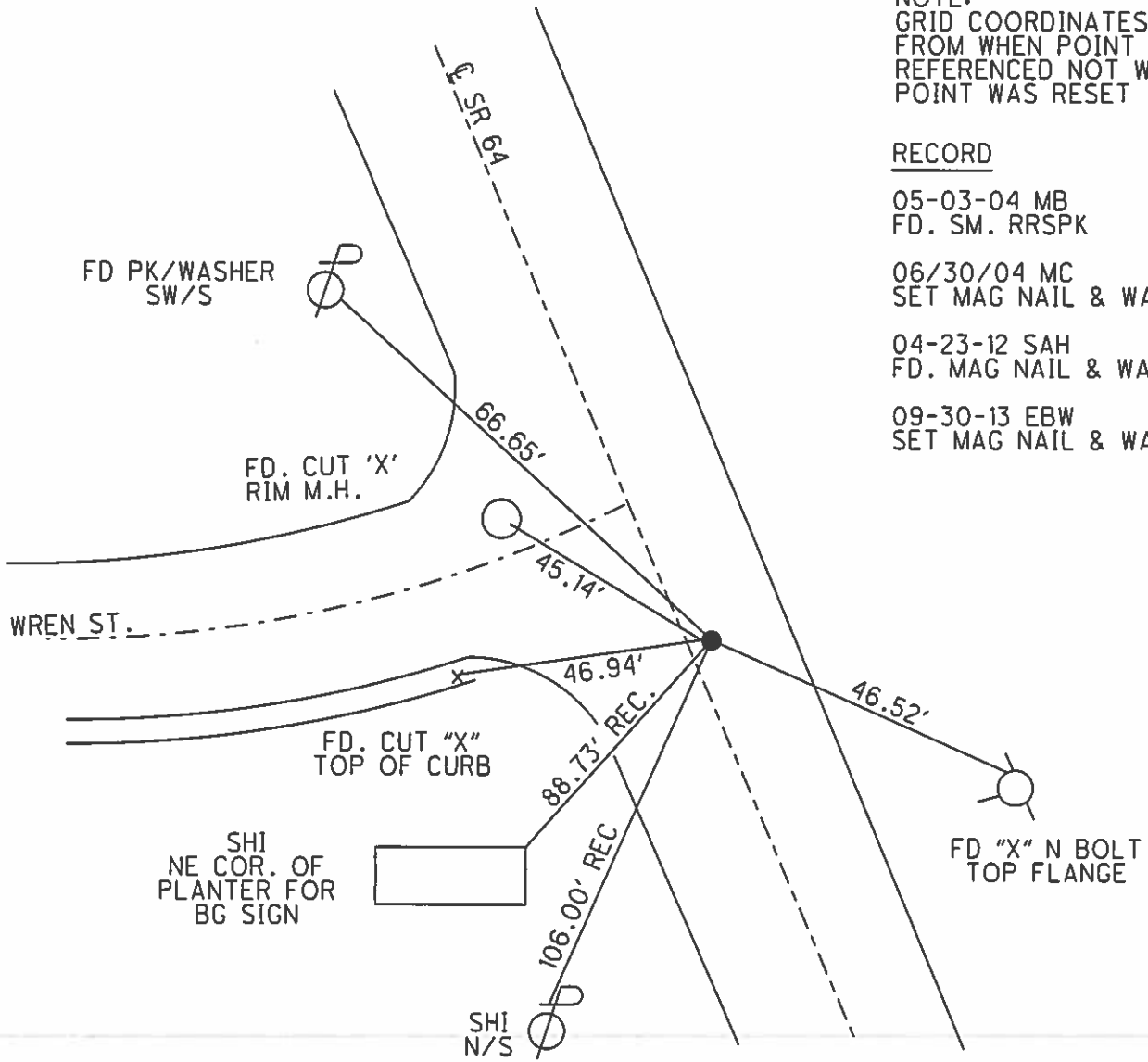
RECORD

05-03-04 MB  
FD. SM. RRSPK

06/30/04 MC  
SET MAG NAIL & WASHER

04-23-12 SAH  
FD. MAG NAIL & WASHER

09-30-13 EBW  
SET MAG NAIL & WASHER





# O.D.O.T. DISTRICT 2 SURVEY OFFICE

PERSONNEL \_\_\_\_\_

REFERENCE NO. \_\_\_\_\_

SHEET \_\_\_\_\_ OF \_\_\_\_\_

NOTES HOFFMAN

H.C. LOHRKE

DATE 4-20-88

ROUTE SR 64

R.C. BARNHILL

WEATHER windy - CLEAR

COUNTY WOOD

REED

TEMP. 40°

TOWNSHIP PLAIN

SECTION 14

T 5 N R 10 E

TYPE MONUMENT P.K. Nail - ORIGIN UNKNOWN

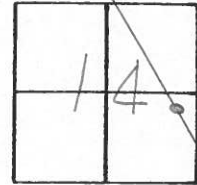
ON SURFACE - BELOW YES

LEFT - & PAV'T. - RIGHT 0.8

8.5 TO RT EDGE PAVEMENT

S.L.M. 215 +07

Set small  
RR SPTS  
6-9-88 SOK



7AB

