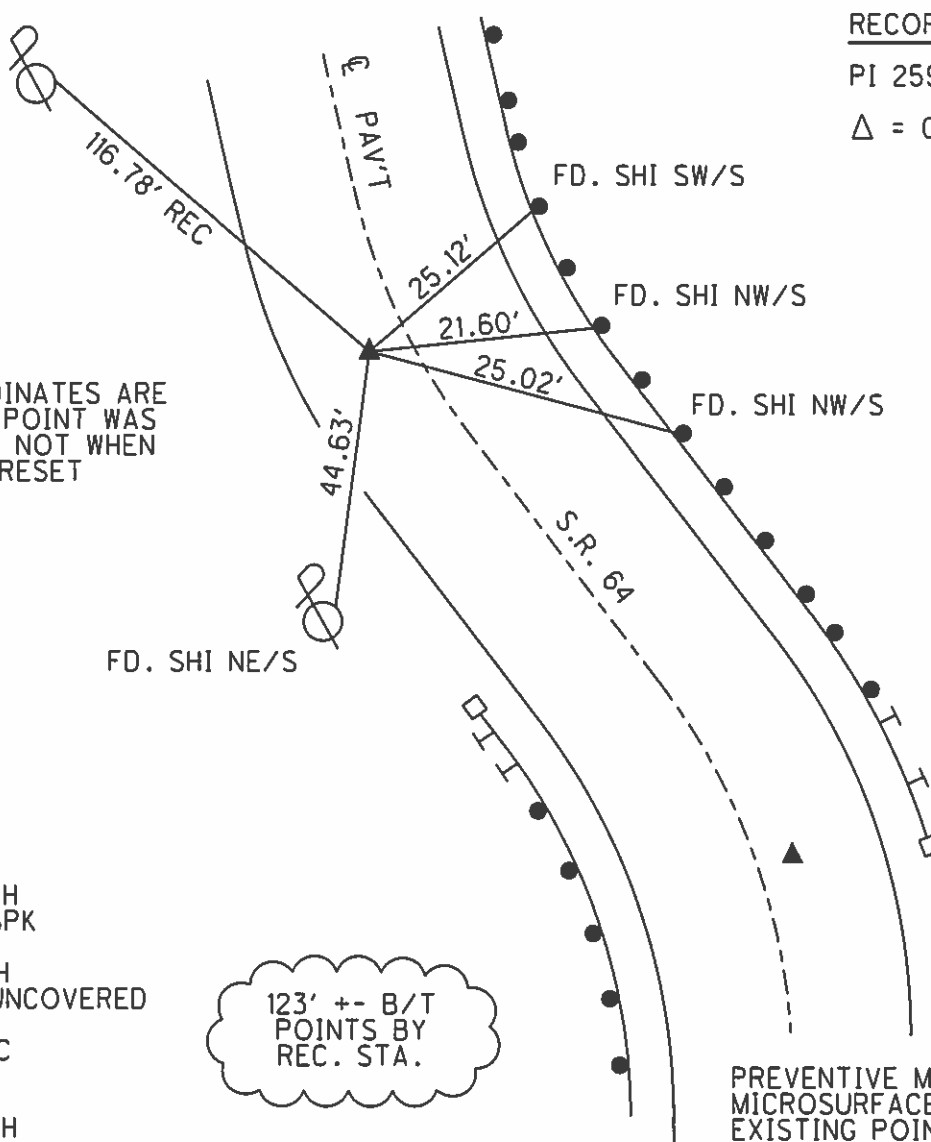
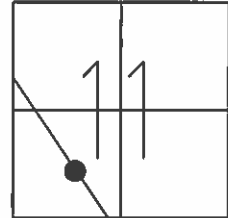


O.D.O.T. DISTRICT 2 SURVEY OFFICE

PERSONNEL	REFERENCE NO.	<u>7 E</u>	SHEET	<u>6</u>	OF	<u>32</u>
NOTES	<u>WESTFALL</u>	DATE	<u>06-04-13</u>	ROUTE	<u>S.R. 64</u>	
H.C.	<u>ROUSOS</u>	WEATHER	<u>CLEAR</u>	COUNTY	<u>WOOD</u>	
R.C.	<u>RHOADES</u>	TEMP.	<u>63° F</u>	TOWNSHIP	<u>PLAIN</u>	
				SECTION	<u>11</u>	
				T	<u>5 N</u>	R
						<u>10 E</u>

TYPE MONUMENT PK
 ON SURFACE - ~~BELOW~~ YES
 LEFT - ~~PAV'T~~ - ~~RIGHT~~ 6.0'
3.3' TO LT. EDGE PAVEMENT
 S.L.M. 259+45
 Grid: Northing: 634,932.847 Easting: 1,644,540.833



RECORD
 PI 259+80.64
 $\Delta = 08^{\circ}-50' RT.$

NOTE:
 GRID COORDINATES ARE
 FROM WHEN POINT WAS
 REFERENCED NOT WHEN
 POINT WAS RESET

- RECORD
- 06-19-97 SAH
FD. SM. RRSPK
 - 12-01-97 SAH
SPIKE WAS UNCOVERED
 - 06-22-02 MC
FD. PK/W
 - 04-23-12 SAH
FD. PK/W

123' +/- B/T
POINTS BY
REC. STA.

PREVENTIVE MAINTENANCE
 MICROSURFACED 2002
 EXISTING POINT UNCOVERED
 DATE 12-09-02

O.D.O.T. DISTRICT 2 SURVEY OFFICE

PERSONNEL _____

REFERENCE NO. _____

SHEET 4 OF 27

NOTES Huss

H.C. Cordes

R.C. VanNusen

Flag Cox

DATE 6-19-97

WEATHER Pt Cldy - Fair

TEMP. + 71°F

ROUTE SR-64

COUNTY Wood

TOWNSHIP Plain

SECTION 11

T 5 N R 10 E

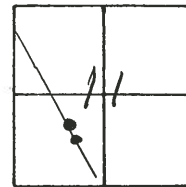
TYPE MONUMENT SMALL R.R. SPIKES

~~ON SURFACE~~ - BELOW Yes

~~LEFT~~ - ~~RIGHT~~ - RIGHT A = 4.5' Rt. B = 6.0' Lt.

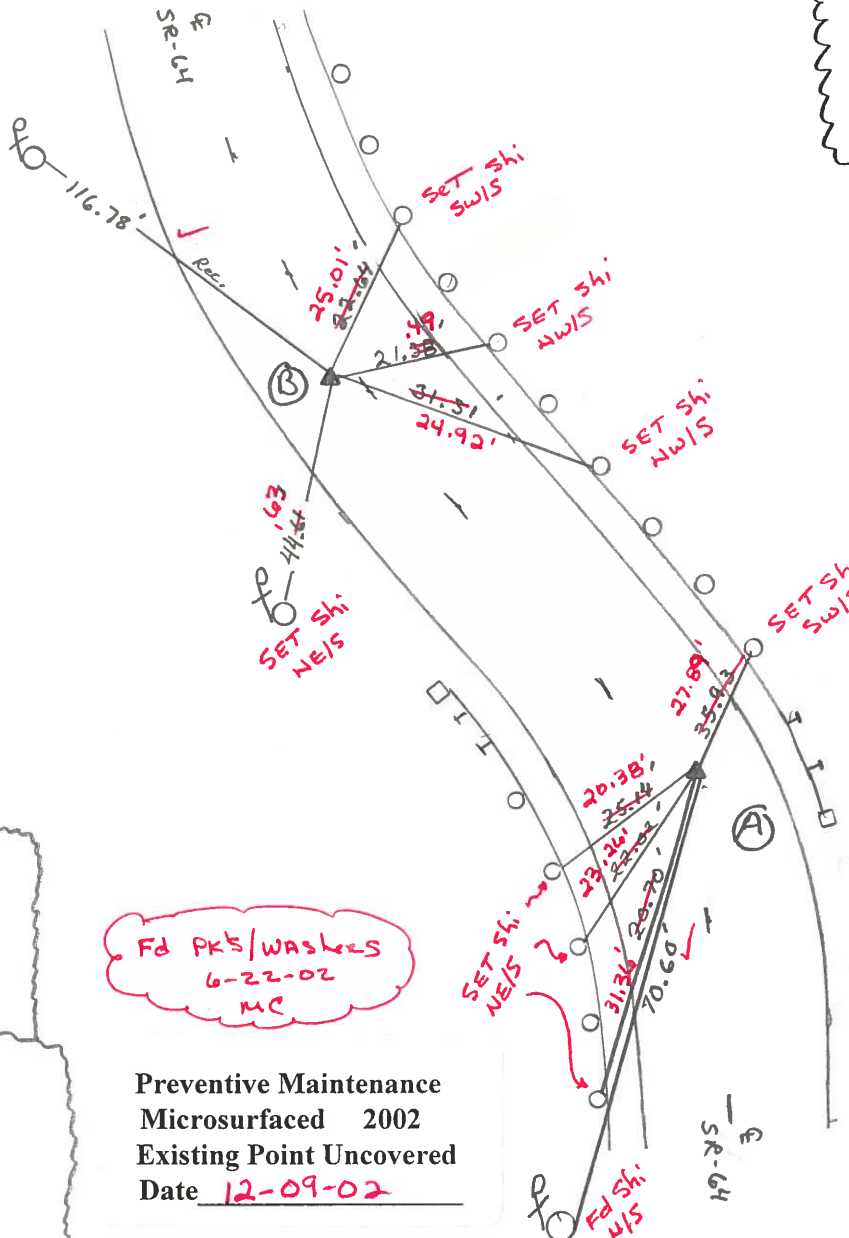
A 5.4 TO Rt. EDGE PAVEMENT B = 3.3 TO Lt.

S.L.M. A = 7+873.2 B = 7+910.9



258+22

259+45



A Set PK/w
12-01-97
B Spike was
uncovered
12-01-97
SAH

7E B Record
PI - 259+80.64
Δ - 8°-50' Rt.

A Record **7D**
PI - 258+57.34
Δ - 8°-47' Lt.

Fd PK's/washers
6-22-02
MC

Preventive Maintenance
Microsurfaced 2002
Existing Point Uncovered
Date 12-09-02

O.D.O.T. DISTRICT 2 SURVEY OFFICE

PERSONNEL

REFERENCE NO. 7-D

SHEET OF

NOTES HOFFMAN

H.C. LOEHRKE

DATE 4-20-88

ROUTE SR 64

R.C. BARNHISEL

WEATHER WINDY - CLEAR

COUNTY WOOD

REED

TEMP. 49°

TOWNSHIP PLAIN

SECTION 11

TS NR 10 E

TYPE MONUMENT P.K.'S

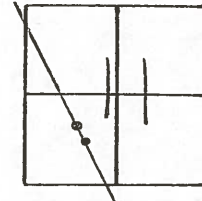
ON SURFACE - ~~BELOW~~ YES

LEFT - ~~C~~ PAV'T - RIGHT 3.5' RT - 6.6' LT

5:3 TO RT LT EDGE PAVEMENT

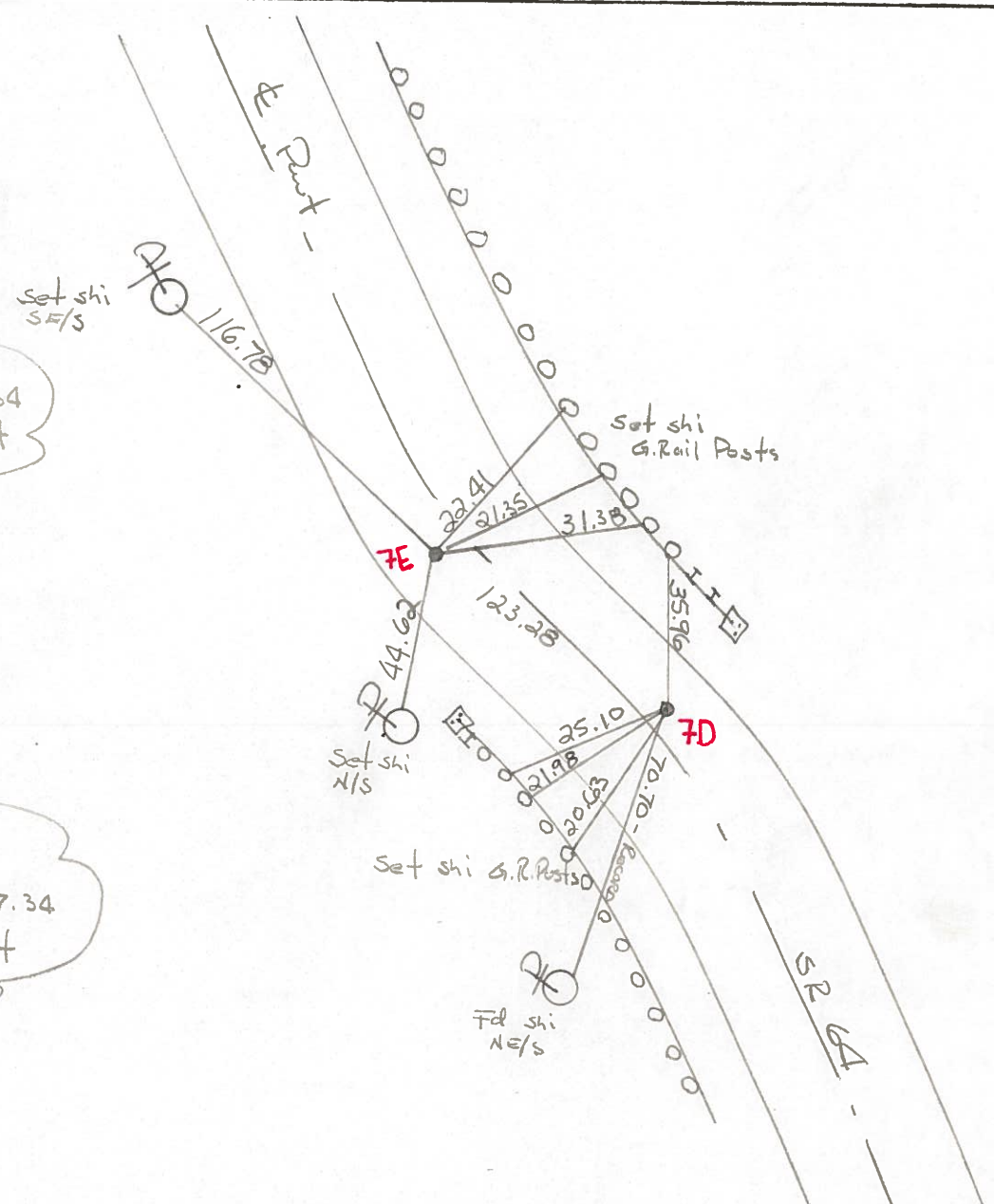
S.L.M. 258+22 - 259+45

Set small
R.R. SPIKE @
Both points
6-9-88 swt



Record:
P.I. 259+80.64
 $\Delta = 8^{\circ} - 50' RT$

Record:
P.I. 258+57.34
 $\Delta = 8^{\circ} - 47' LT$



County Wood S.R. 64

Township Plain

Section 11

T5N, R10E

Personnel Smith

Knapp

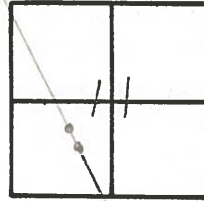
Bowers

Mead

Date 7-2-1979

Weather Cloudy

Temp. +60°



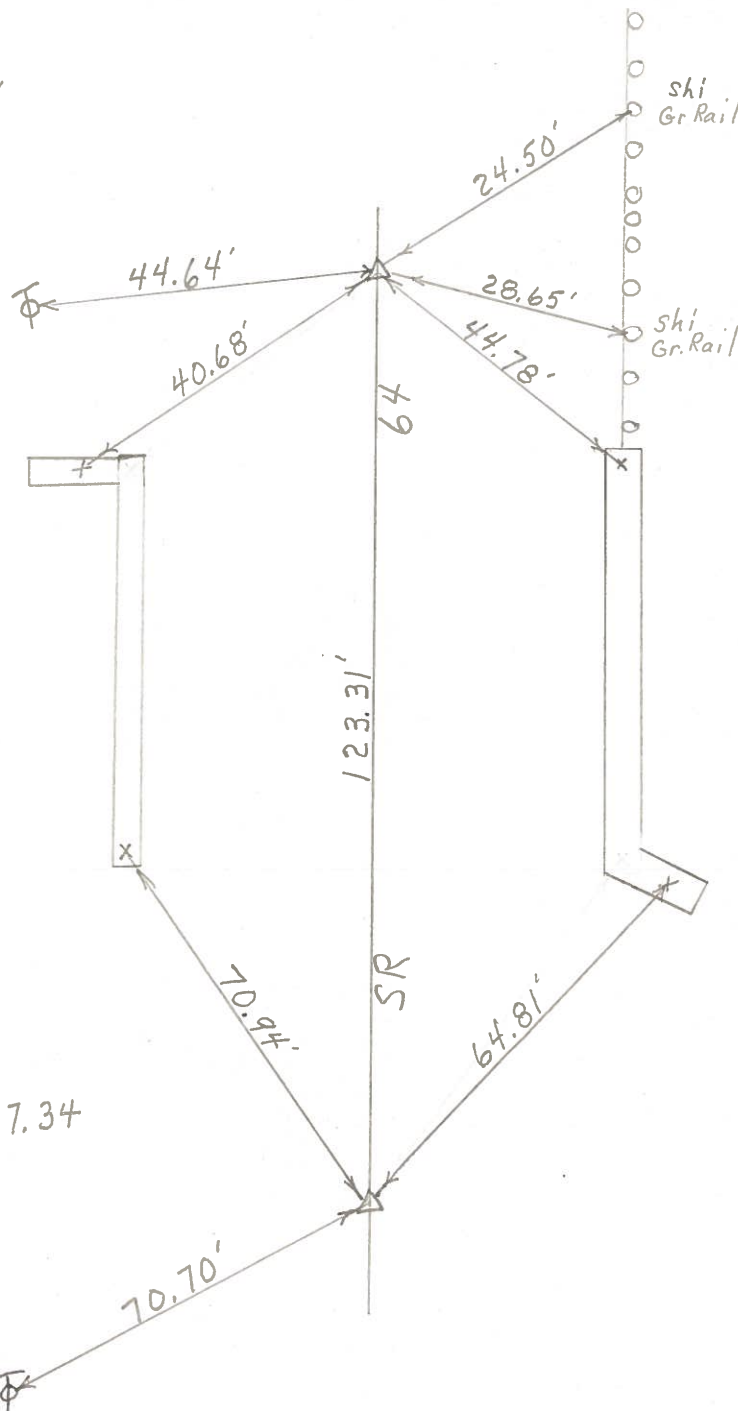
28B4C 7-D

P.I. 259+80.64'

Δ 8° 50' Rt.

Fd P.K. Nail

@ Surface



P.I. Sta 258+57.34

Δ = 8° 47' Lt.

Fd Small R.R. Spike

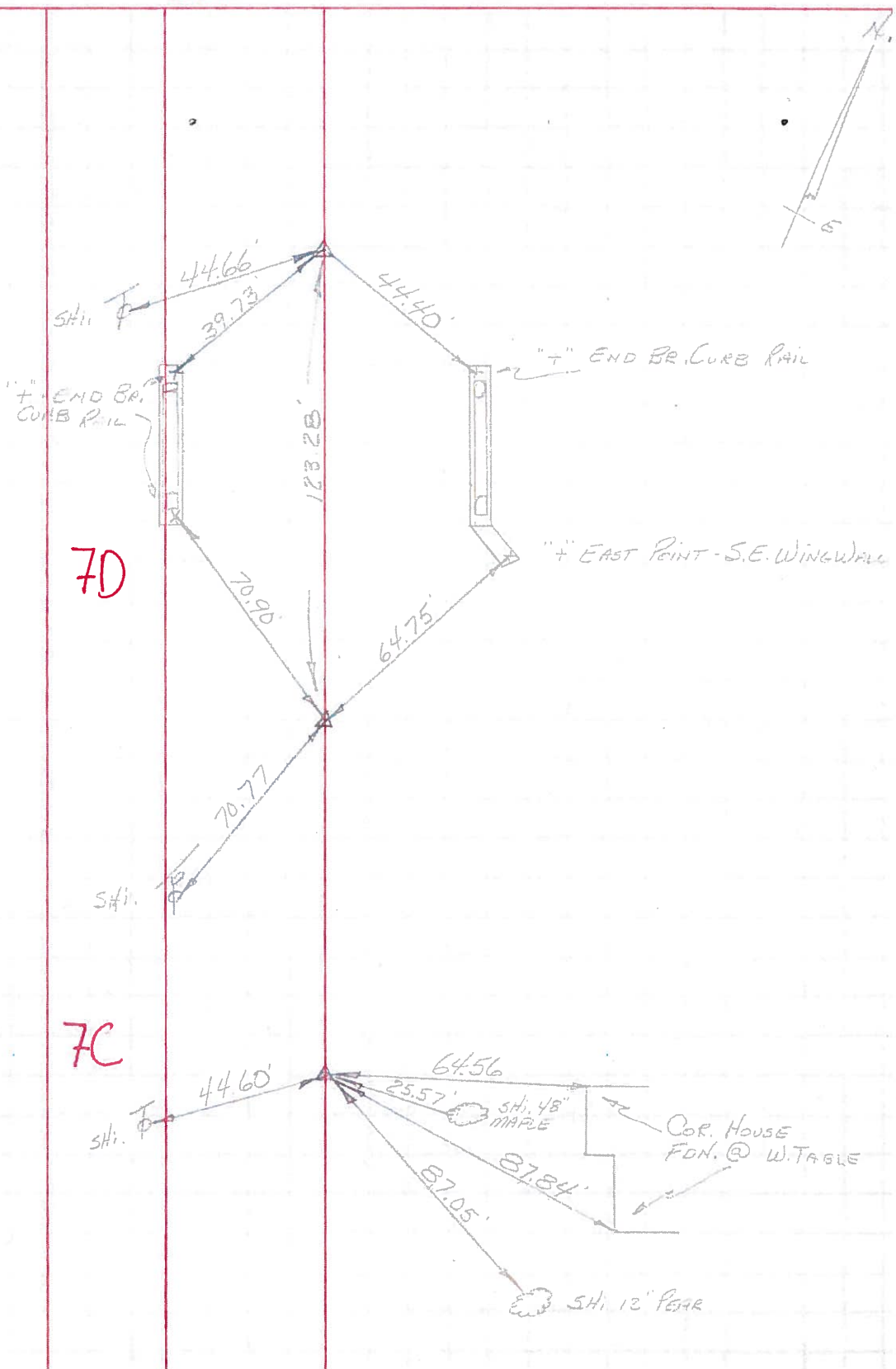
@ Surface

PERSONNEL	TITLE	PERSONNEL	TITLE	COUNTY	DATE
<u>BURNSIDE</u>				<u>WOOD</u>	<u>6-22-70</u>
<u>HOFFMAN</u>				S. R. <u>#64</u>	WEATHER <u>CLEAR</u>
				SEC.	TEMP. <u>+72°</u>
DESCRIPTION	<u>CONTROL TIES</u>	<u>BOWLING GREEN - NORTH</u>			JOB NO.
	LEFT	CENTER LINE	RIGHT		

P.I. STA. 71+62.02
 $\Delta = 8^\circ - 50' \text{ RT.}$
 F.D. R.R. SPK.
 (ON SURFACE)
 #198

P.I. STA. 70+38.9
 $\Delta = 8^\circ - 47' \text{ LT.}$
 F.D. R.R. SPK.
 1/2" BELOW SURFACE
 #197

P.I. STA. 66+96.8
 $\Delta = 0^\circ - 12' \text{ LT.}$
 F.D. R.R. SPK.
 .20' BELOW SURFACE
 #196



PERSONNEL	TITLE	PERSONNEL	TITLE	COUNTY	DATE
Ch. by Mult				Wood	OK 12-11-57
				S. R. 69	WEATHER
				SEC	TEMP
DESCRIPTION From Bowling Green-North					JOB NO.
	LEFT	CENTER LINE	RIGHT		

$P.I. 328+99.7 = 15+07$
 $328+99.7$
 $308+02.1$

 $20+97.6$
 $15+07.1$
 $36+04.7$
#194

$P.I. 303+02.1 = 36+04.7$
 $277+11.2$ $30+90.9$

 $30+90.9$ $66+95.6$
 Fd. R.R. Spt.
 3' Below Surface
 1-7-66
#195

$P.I. 277+11.2 = 66+95.6$
 $273+68.9$ $3+42.3$

 $3+42.3$
 Fd. Bolt
 3' Below Surface
 1-7-66
#196

$P.I. 273+68.9 = 70+37.9$
 $272+45.5$ $1+22.4$

 $1+23.4$ $71+61.3$
 Ties ok Set R.R. Spt.
 1-7-66
#197

$P.I. 272+45.5 = 71+61.3$
 $252+63.9$ $17+81.6$

 $17+31.6$ $91+42.9$
 Ties ok Set R.R. Spt.
#198

