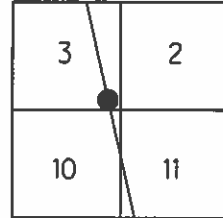


O.D.O.T. DISTRICT 2 SURVEY OFFICE

PERSONNEL	REFERENCE NO.	<u>10</u>	SHEET	<u>11</u>	OF	<u>32</u>
NOTES	<u>WESTFALL</u>	DATE	<u>06-04-13</u>	ROUTE	<u>S.R. 64</u>	
H.C.	<u>ROUSOS</u>	WEATHER	<u>CLEAR</u>	COUNTY	<u>WOOD</u>	
R.C.	<u>RHOADES</u>	TEMP.	<u>63° F</u>	TOWNSHIP	<u>PLAIN</u>	
				SECTION	<u>3</u>	
				T	<u>5</u>	N
				R	<u>10</u>	E

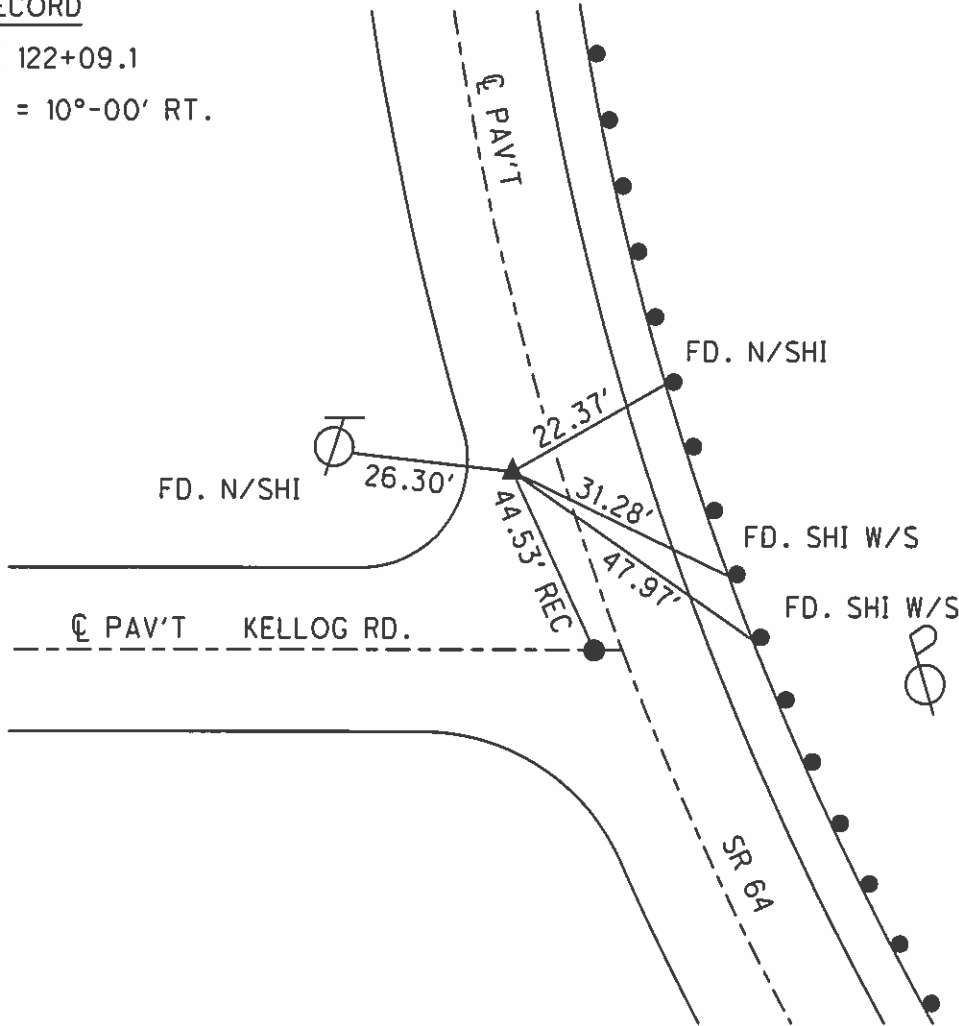
TYPE MONUMENT MAG NAIL
~~ON SURFACE~~ - BELOW 0.1'
 LEFT - ~~C PAV'T~~ - RIGHT 5.0'
14.8' TO RT. EDGE PAVEMENT
 S.L.M. 309+90



Grid: Northing: 639,385.688 Easting: 1,642,167.443

RECORD

PI 122+09.1
 $\Delta = 10^{\circ}-00'$ RT.



RECORD

- 06-19-97 SAH
FD. SM. RRSPK
- 12-01-97 SAH
SET PK/W
- 06-22-02 MC
FD. PK/W
- 04-23-12 SAH
FD. SHANK
- 09-25-13 EBW
SET MAG/W

PREVENTIVE MAINTENANCE
 MICROSURFACED 2002
 EXISTING POINT UNCOVERED
 DATE 12-09-02

O.D.O.T. DISTRICT 2 SURVEY OFFICE

PERSONNEL _____

REFERENCE NO. _____

SHEET 7 OF 27

NOTES Huss

H.C. Cordes

R.C. VanDusen

Flag Cox

DATE 6-19-97

WEATHER Pt Cldy- Fair

TEMP. +75° F

ROUTE 64

COUNTY Wood

TOWNSHIP Plain

SECTION 10-3

T 5 N R 10 E

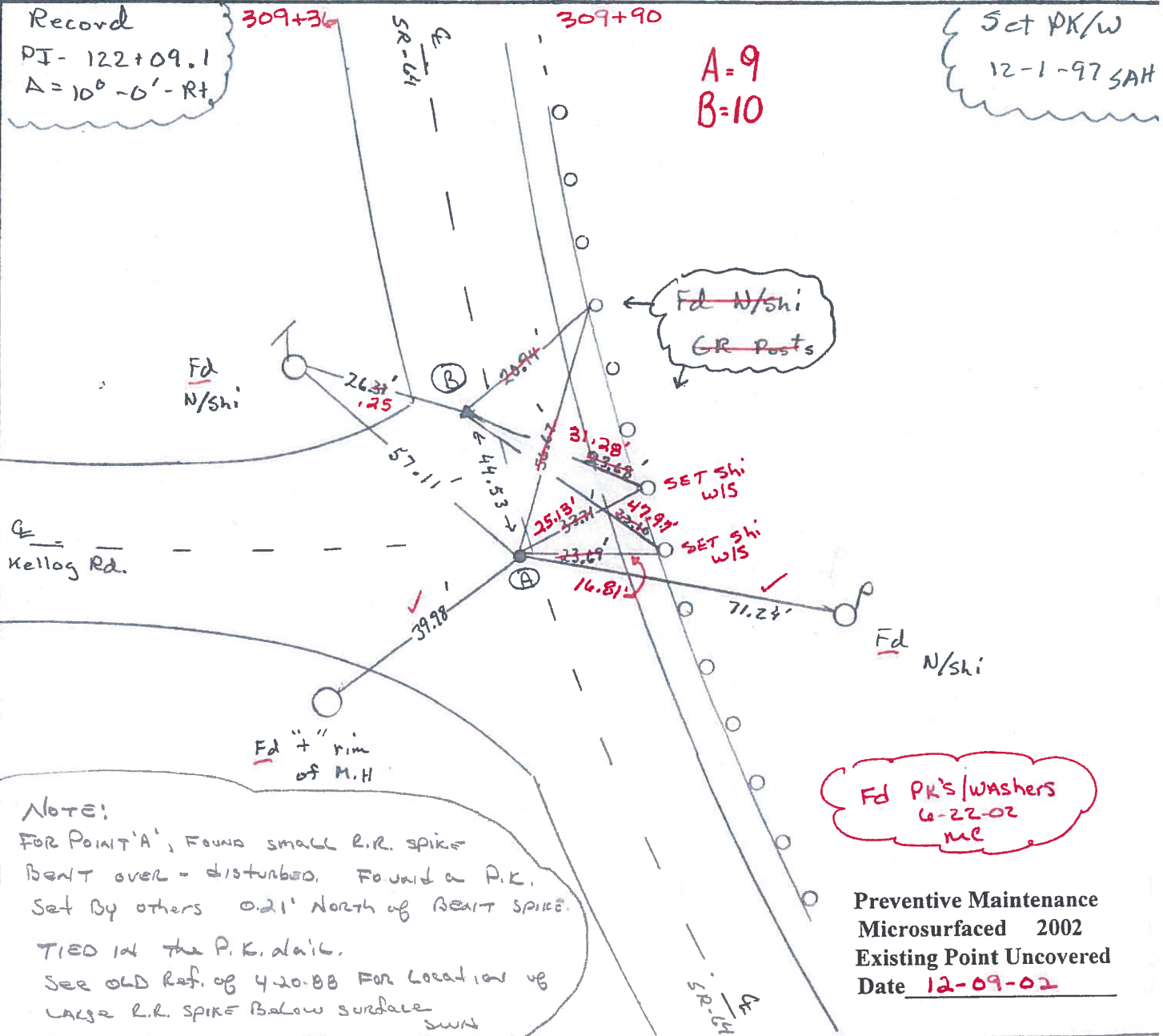
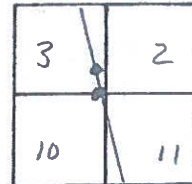
TYPE MONUMENT SMALL R.R. Spks' (A) (B)

ON SURFACE - ~~BLIND~~ Yes

LEFT - ~~RIGHT~~ RIGHT (A) - 2.2' (B) - 5.0'

(A) 11.9 TO Rt. EDGE PAVEMENT (B) 14.8' RT.

S.L. K (A) - 9 + 439.65 (B) - 9 + 484.18



Record
 PI - 122+09.1
 A = 10° - 0' - Rt.

Set PK/W
 12-1-97 SAH

A=9
 B=10

Fd PK's/washers
 6-22-02
 ml

NOTE:
 FOR POINT 'A', FOUND small R.R. SPIKE
 BENT over - disturbed. Found a P.K.
 Set By others 0.21' North of BENT SPIKE.
 TIED in the P.K. data.
 See OLD Ref. of 420-BB FOR Location of
 LARGE R.R. SPIKE Below surface

Preventive Maintenance
 Microsurfaced 2002
 Existing Point Uncovered
 Date 12-09-02

O.D.O.T. DISTRICT 2 SURVEY OFFICE

PERSONNEL

REFERENCE NO. 10

SHEET OF

NOTES HOFFMAN

H.C. LOEHRKE

DATE 4-20-88

ROUTE SR 64

R.C. BARNHISEL

WEATHER windy - P. Clear

COUNTY WOOD

REED

TEMP. 49°

TOWNSHIP PLAIN

SECTION 10 - 3

T.S. N R 10 E

TYPE MONUMENT R.R. SPK - R.R. SPK

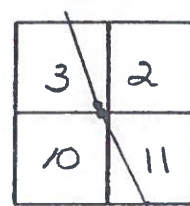
Set small
RR SPIKE w/
2074 Points
6-9-88 work

ON SURFACE - ~~BELOW~~ YES - YES

LEFT - ~~PAV'T.~~ - RIGHT 7.8' - 4.8'

TO ~~RT~~ RT EDGE PAVEMENT 2.2' 5.0'

S.L.M. 508126 / 309490 905304



RECORD:
P.I. 120+09.1
 $\Delta = 10^{\circ} - 0' \text{ RT.}$

Set PK/W
12-1-97 SAH

Use This ¹²
For Dist between
pts PK

Spk - Spk
A-B - Between
44.53

A-B ~~Spk - Spk~~
44.74

A=9
B=10

438.65
482.18
53.1

Correct
Sta

Set
N/shi

Set shi
w/s

Set shi
w/s
G. Rail Posts

Set shi
w/s

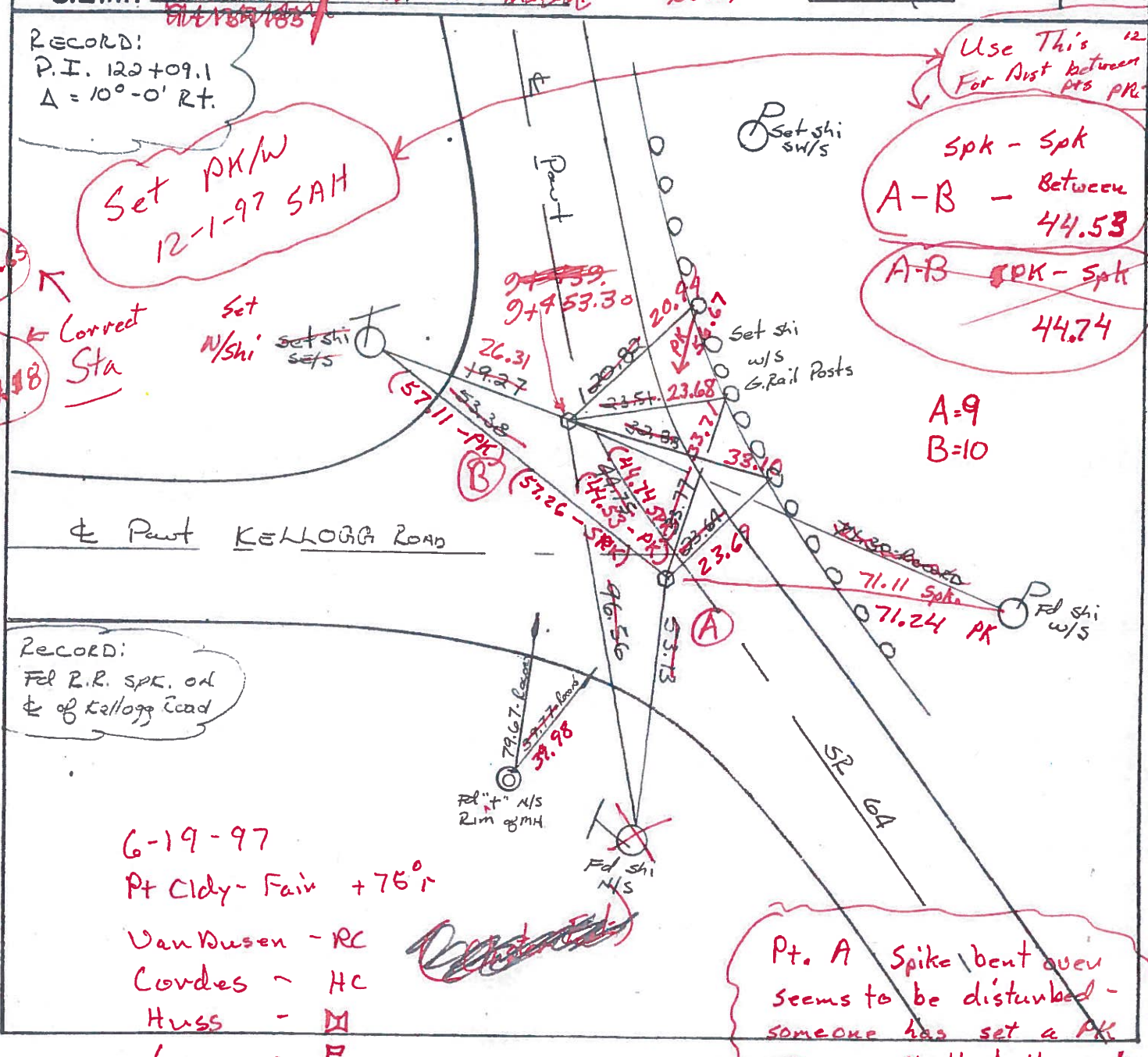
Part KELLOGG ROAD

RECORD:
Fol R.R. SPK. on
E of Kellogg Road

6-19-97
Pt Cldy - Fair +75°r

Van Dusen - RC
Cordes - HC
Huss - M
... - P

Pt. A Spike bent over
seems to be disturbed -
someone has set a PK



O.D.O.T. DISTRICT 2 SURVEY OFFICE

PERSONNEL

REFERENCE NO. 10

SHEET OF

NOTES HOFFMAN

H.C. LOEHRKE

DATE 4-20-88

ROUTE SR 64

R.C. BARNHISEL

WEATHER Windy - P. Clear

COUNTY WOOD

REED

TEMP. 49°

TOWNSHIP PLAIN

SECTION 10-3

T.S. N R 10 E

TYPE MONUMENT R.R. SPK - R.R. SPK

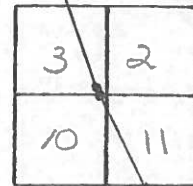
Set small
RR SPIKE @
BOTH POINTS
6-9-88 SWH

ON SURFACE - ~~BELOW~~ YES - YES

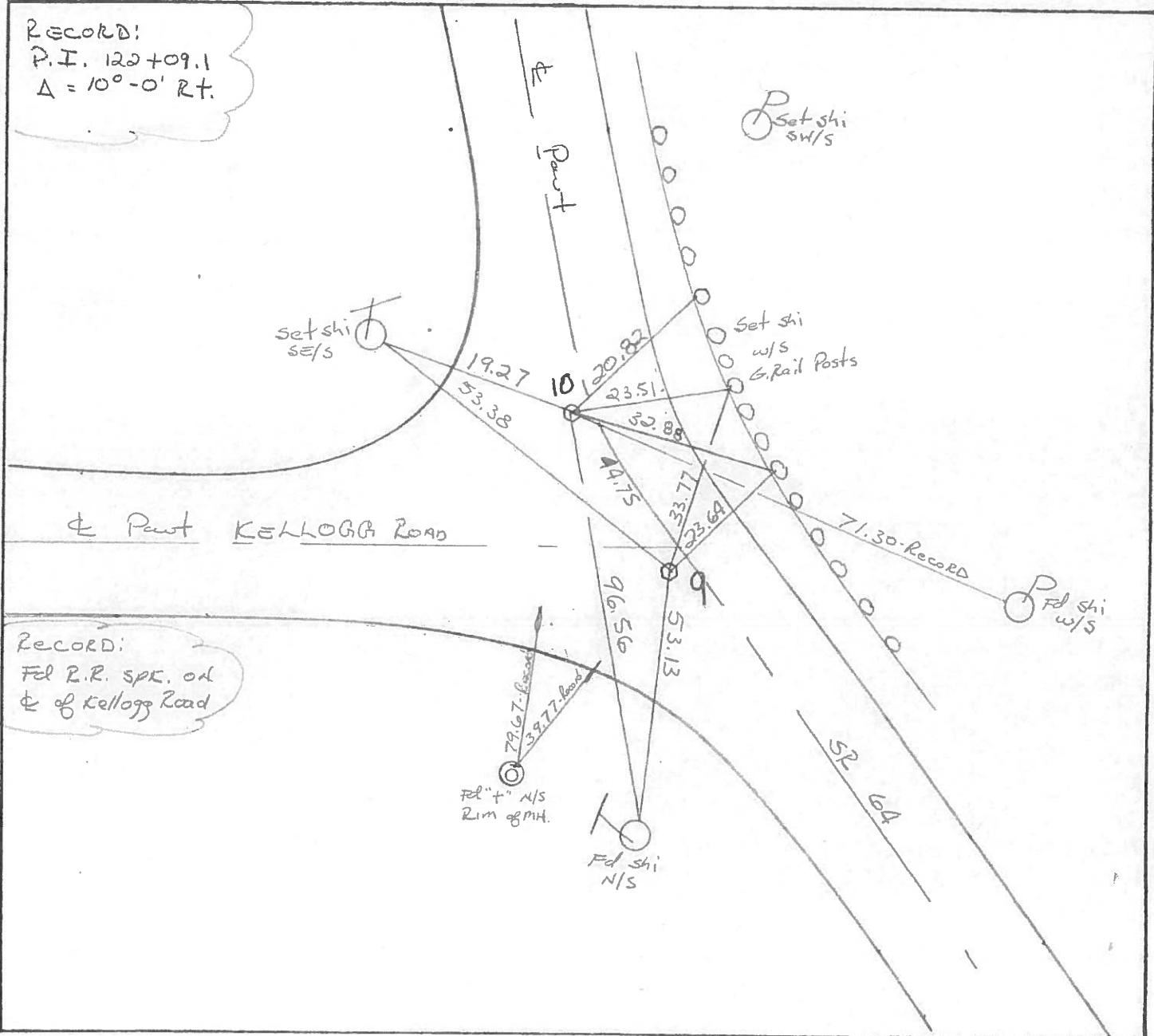
LEFT-~~E~~ PAV'T. - RIGHT 1.8' - 4.8'

11.7 TO RT EDGE PAVEMENT

S.L.M. 309+36 - 309+90



RECORD:
P.I. 122+09.1
 $\Delta = 10^{\circ}-0'$ RT.



RECORD:
Pd R.R. SPK. on
& of Kellogg Road

County Wood S.R. 64

Date 7-2-1979

Township Plain

Weather Cloudy

Section 2

Temp. +60°

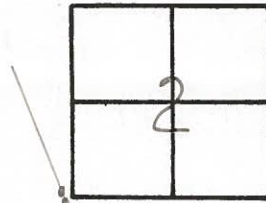
T5N, R10E

Personnel Smith

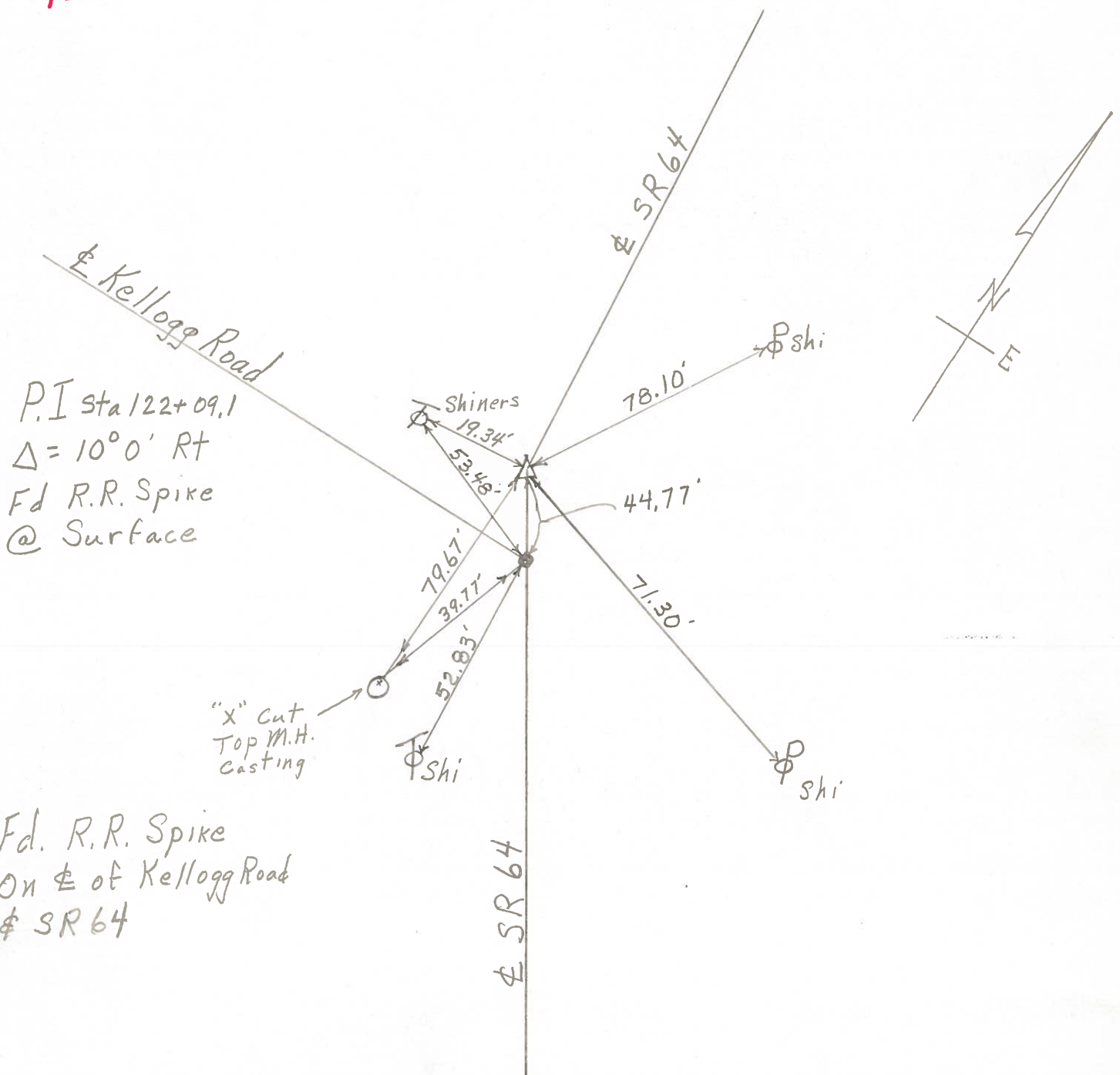
Knape

Bowers

Mead



(31) 10



P.I. Sta 122+09.1
 $\Delta = 10^\circ 0' \text{ Rt}$
Fd R.R. Spike
@ Surface

Fd. R.R. Spike
On $\&$ of Kellogg Road
 $\&$ SR 64

PERSONNEL TITLE PERSONNEL TITLE
BURNSIDE _____
HOFFMAN _____

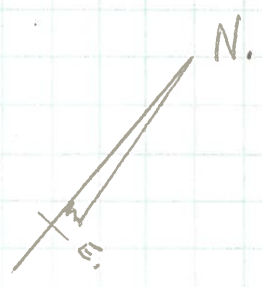
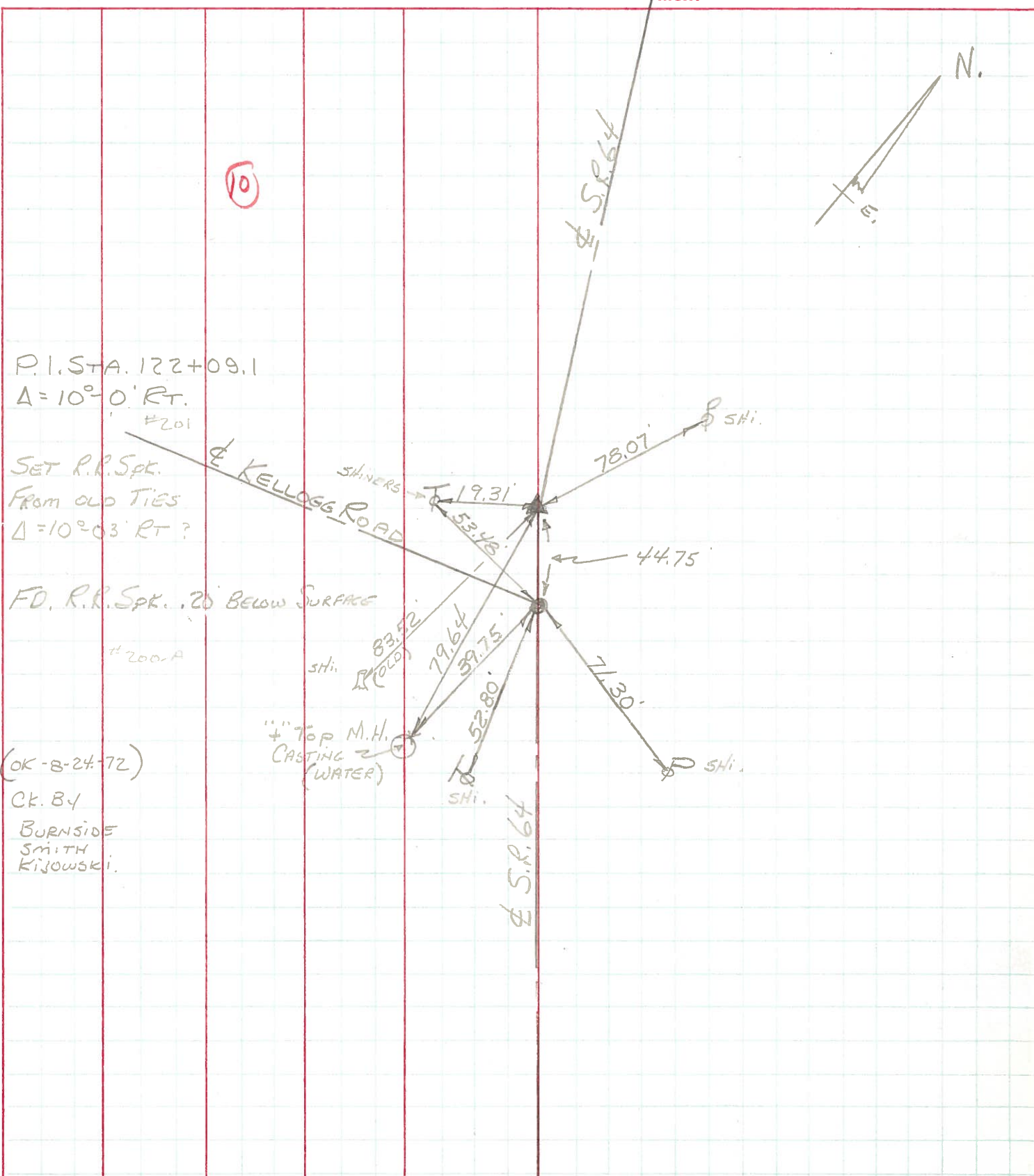
COUNTY WOOD DATE 6-23-70

S. R. #64 WEATHER CLEAR

SEC. KELLOGG ROAD TEMP. +80°

DESCRIPTION CONTROL TIES

JOB NO. _____



P.I. STA. 122+09.1
 $\Delta = 10^\circ - 0' \text{ RT.}$
 #201

SET R.R. S.P.
 FROM OLD TIES
 $\Delta = 10^\circ - 03' \text{ RT. ?}$

FD. R.R. S.P. .20 BELOW SURFACE
 #200-A

(OK-8-24-72)
 CK. BY
 BURNSIDE
 SMITH
 KIJOWSKI.

4" TOP M.H.
 CASTING 2
 (WATER)

S.P. 64