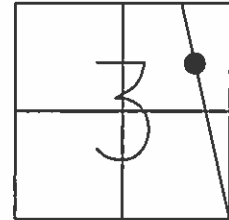


O.D.O.T. DISTRICT 2 SURVEY OFFICE

PERSONNEL	REFERENCE NO.	<u>10 B</u>	SHEET	<u>14</u>	OF	<u>32</u>
NOTES	<u>S. HUSS</u>	DATE	<u>08-20-97</u>	ROUTE	<u>S.R. 64</u>	
H.C.	<u>B. VANDUSSEN</u>	WEATHER	<u>PARTLY CLOUDY</u>	COUNTY	<u>WOOD</u>	
R.C.	<u>K. MOSER</u>	TEMP.	<u>+78° F</u>	TOWNSHIP	<u>PLAIN</u>	
				SECTION	<u>3</u>	
				T	<u>5</u>	N
				R	<u>10</u>	E

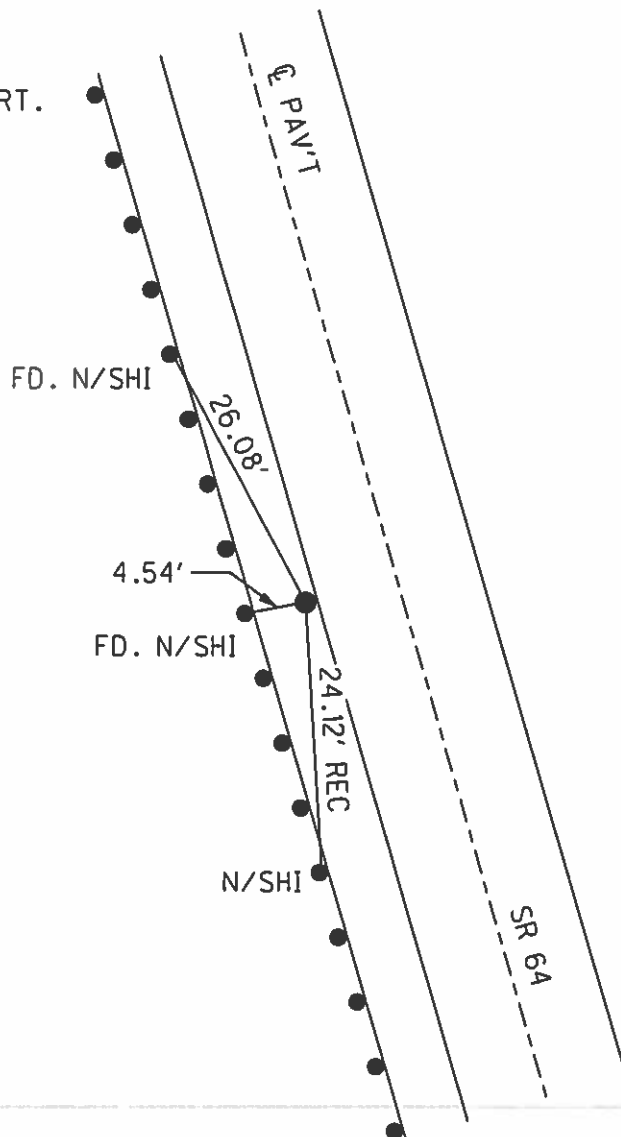
TYPE MONUMENT IRON PIN IN CONC.
 ON SURFACE - ~~BELOW~~ YES
 LEFT - ~~C PAV'T~~ - ~~RIGHT~~ 15.6'
2.9' TO LT. EDGE PAVEMENT
 S.L.M. 340+05



Grid: Northing: 642,254.172 Easting: 1,641,234.275

RECORD

PI 152+26.8
 $\Delta = 08^\circ - 30' \text{ RT.}$



RECORD

- 08-20-97 BVD
FD. IRON PIN
IN CONC.
- 12-01-97 SAH
NOT DISTURBED
LOCATED JUST
UNDER NEW PAV'T
AT OUTSIDE
EDGE OF BERM
- 06-22-02 MC
FD. IRON PIN
IN CONC.
- 04-23-12 SAH
FD.
- 09-25-13 EBW
FD. IRON PIN
IN CONC.

PREVENTIVE MAINTENANCE
 MICROSURFACED 2002
 EXISTING POINT UNCOVERED
 DATE 12-09-02

O.D.O.T. DISTRICT 2 SURVEY OFFICE

PERSONNEL

REFERENCE NO. 10-B

SHEET 10 OF 27

NOTES S. HUSS

H.C. B. VAN DOSEW

DATE 8-20-97

ROUTE S.R. 64

R.C. K. MOSER

WEATHER PARTLY CLOUDY

COUNTY WOOD

TEMP. 79°F

TOWNSHIP PLAW

SECTION 3

T 5 N R 10 E

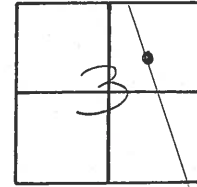
TYPE MONUMENT IRON PIN IN CONCRETE

ON SURFACE - ~~BELOW~~ ON SURFACE

LEFT - ~~C PAV'T.~~ - RIGHT 15.6 LT

2.9' LT OF ~~TO~~ LT. EDGE PAVEMENT

~~S.L.M.~~ SLK 10 + 375 340+05



RECORD:

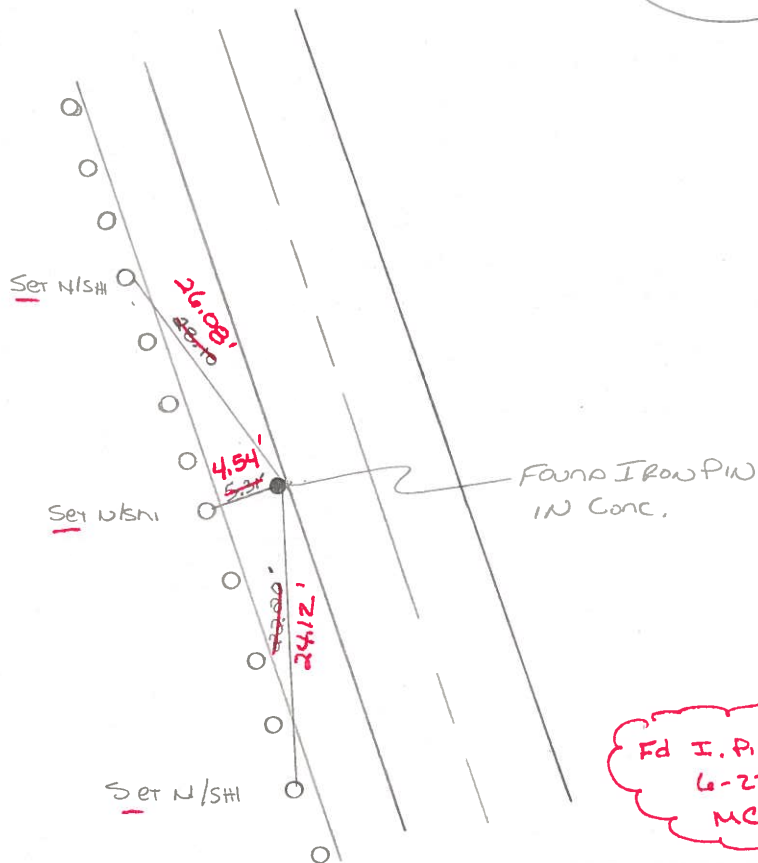
P.I. 152+20.8

$\Delta = 8^\circ - 30' RT$

NOT DISTURBED, LOCATED

JUST UNDER NEW PAVT
@ OUTSIDE ED OF BERM
12-1-97

SAH



Found IRON PIN IN CONC.
 6-22-02
 MC

Preventive Maintenance
 Microsurfaced 2002
 Existing Point Uncovered
 Date 12-09-02

O.D.O.T. DISTRICT 2 SURVEY OFFICE

PERSONNEL

REFERENCE NO. 10 B

SHEET OF

NOTES Hoffman

H.C. LOISHRKE

DATE 4-20-88

ROUTE SR 64

R.C. BARNHISEL

WEATHER Windy - Cloudy

COUNTY WOOD

REED

TEMP. 52°

TOWNSHIP PLAIN

SECTION 3

T. 5 N. R. 10 E

TYPE MONUMENT R.R. SPK - RR SPK

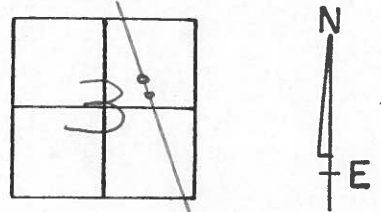
SET SMALL
R.R. SPIKE @
BOTH POINTS
6-9-88 SWK

ON SURFACE - ~~BELOW~~ YES - YES

LEFT - ~~C~~ PAV'T. - RIGHT 4.0' Lt - 6.5' Lt

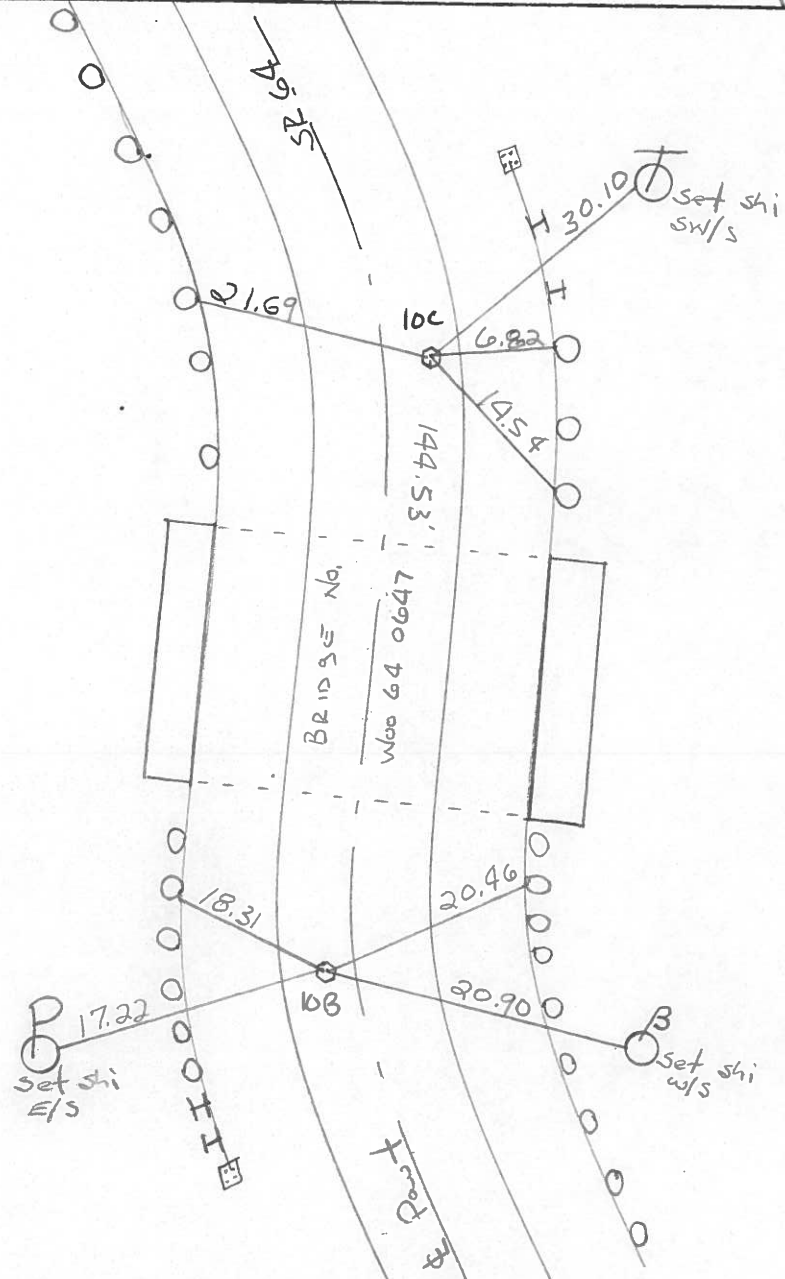
^{5.4} TO ^{Lt} RT EDGE PAVEMENT

S.L.M. 340+05 - 341+49



RECORD:
P.I. 154+45.3
 $\Delta = 9^{\circ}-05' Lt.$

RECORD:
P.I. 152+26.8
 $\Delta = 8^{\circ}-30' Rt.$



County Wood S.R. 64

Date 7-3-1979

Township Plain

Weather clear

Section 3

Temp. 70°

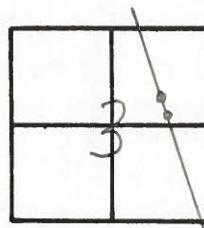
T5N, R10E

Personnel Smith

Knape

Bowers

Mead



(33)

P.I. Sta 154+45.3

$\Delta = 9^{\circ}05' \text{ Lt}$

Fd. R.R. Spike @ Surface

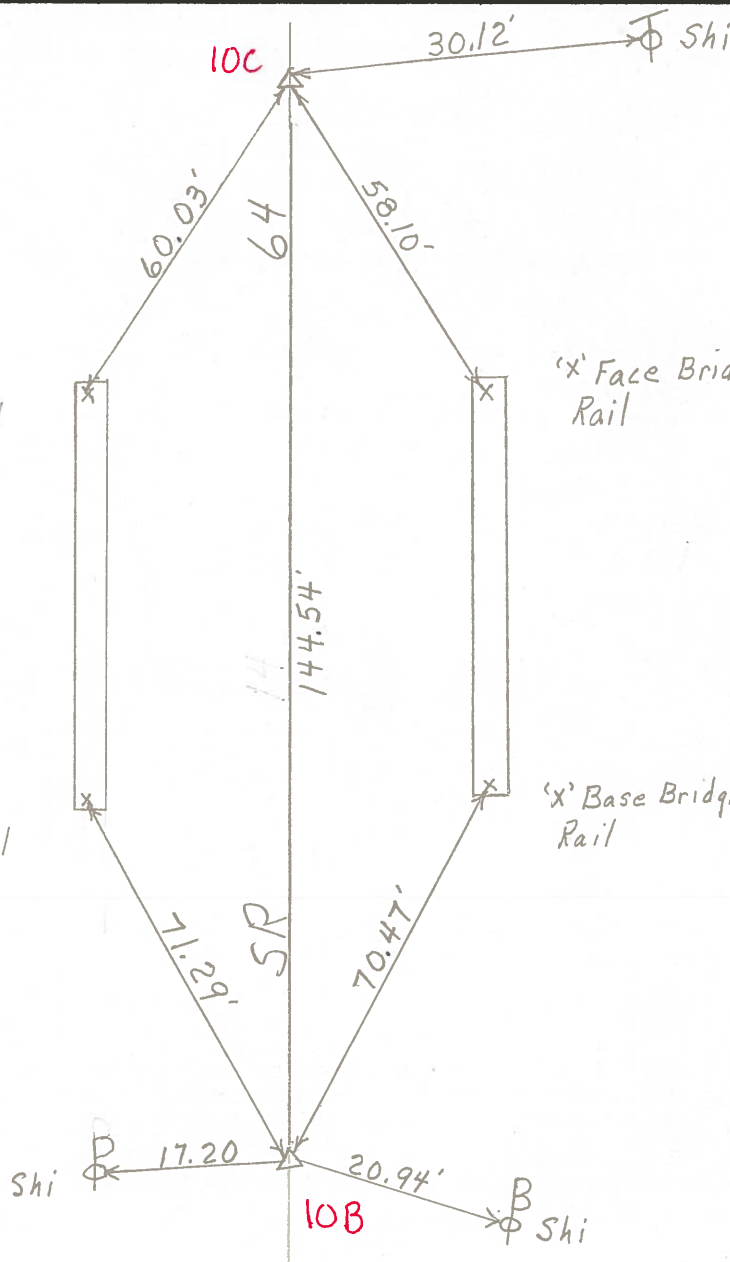
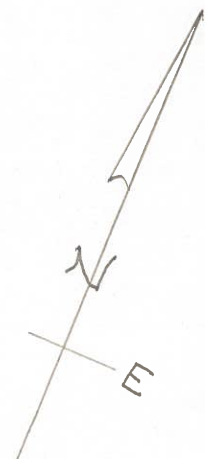
~~10-8~~

'x' Base Bridge Rail

'x' Face Bridge Rail

'x' Face Bridge Rail

'x' Base Bridge Rail



P.I. Sta 152+26.8

$\Delta = 8^{\circ}30' \text{ Rt.}$

Fd. R.R. Spike @ Surface

Shi

Shi