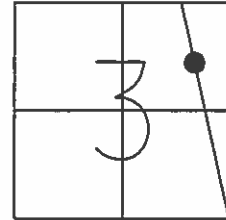


O.D.O.T. DISTRICT 2 SURVEY OFFICE

PERSONNEL _____ REFERENCE NO. 10 C SHEET 15 OF 32
 NOTES S. HUSS DATE 08-20-97 ROUTE S.R. 64
 H.C. B. VANDUSSEN WEATHER PARTLY CLOUDY COUNTY WOOD
 R.C. K. MOSER TEMP. +78° F TOWNSHIP PLAIN
 _____ SECTION 3
 _____ T 5 N R 10 E

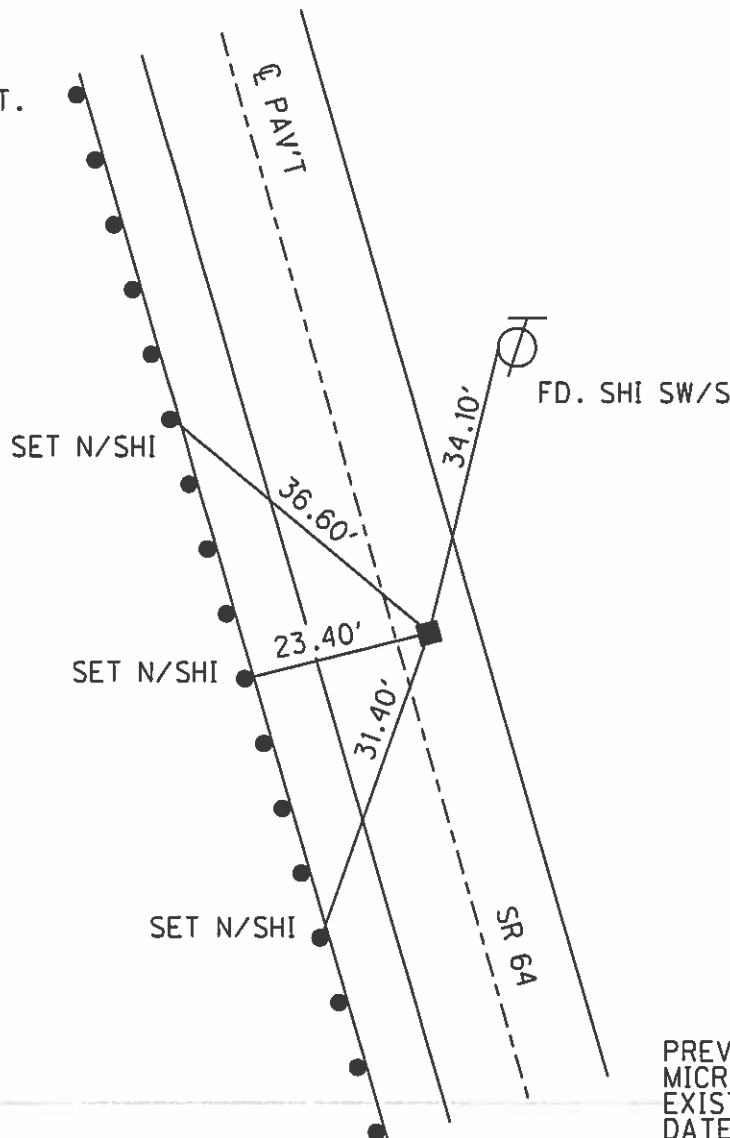
TYPE MONUMENT _____ MONUMENT BOX _____
 ON SURFACE - ~~BELOW~~ _____ YES _____
 LEFT - ~~C PAV'T~~ - ~~RIGHT~~ _____ 3.6' _____
9.0' TO RT. EDGE PAVEMENT
 S.L.M. 341+49



Grid: Northing: 642,396.725 Easting: 1,641,210.893

RECORD

PI 154+45.3
 $\Delta = 09^\circ-05' \text{ LT.}$



RECORD

- 06-19-97 SAH
FD. MON. BOX
- 01-29-98 BVD
MON BOX AT
SURFACE
- 04-23-12 SAH
FD.
- 09-25-13 EBW
FD. MON. BOX

PREVENTIVE MAINTENANCE
 MICROSURFACED 2002
 EXISTING POINT UNCOVERED
 DATE NOT COVERED 12-09-02

O.D.O.T. DISTRICT 2 SURVEY OFFICE

PERSONNEL

REFERENCE NO. 10-C

SHEET 11 OF 27

NOTES S. AUSS

H.C. B. VAUDUSEN

DATE 8-20-97

ROUTE S.R. 64

R.C. K. MOSELER

WEATHER PARTY CLOUDY

COUNTY WOOD

TEMP. +78°F

TOWNSHIP PLAIN

SECTION 3

T5 N R 10 E

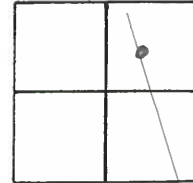
TYPE MONUMENT Monument Box

ON SURFACE - ~~BELOW~~ YES

~~LEFT - C PAV'T. - RIGHT~~ 3.6' RT

9.0' TO RT EDGE PAVEMENT

~~S.L.M.~~ SLK = 10+418.5 341+49



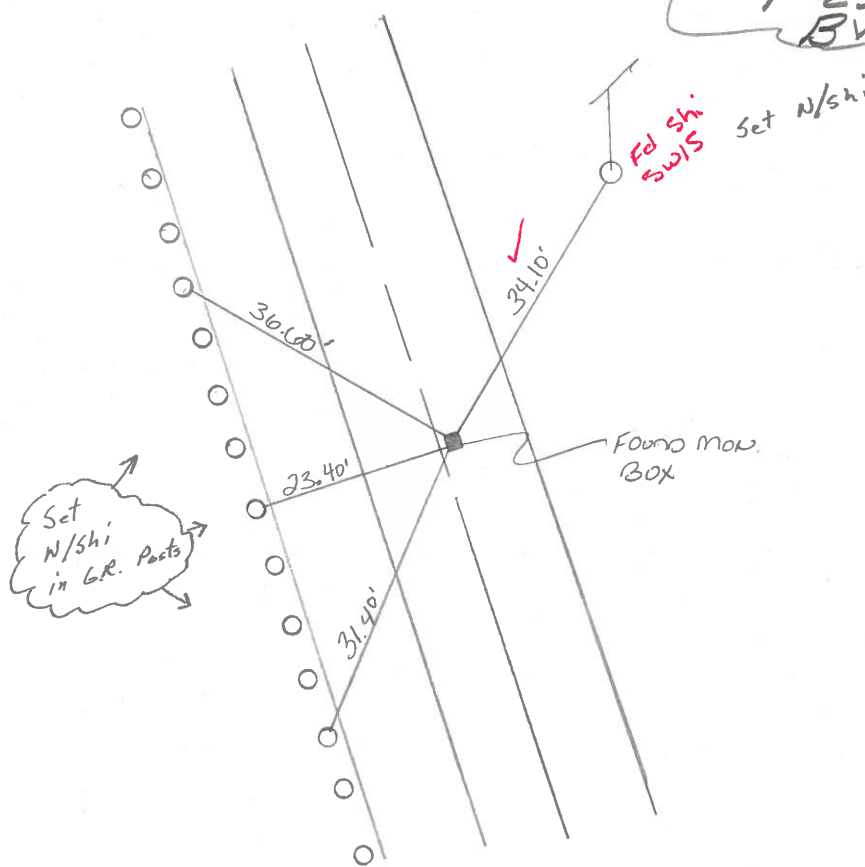
Records

P.I. 154+45.3

$\Delta = 90-05'41''$

Found Mon. Box
12-1-97

MON. BOX @ SURFACE
1-29-98
BVD



Preventive Maintenance
Microsurfaced 2002
Existing Point Uncovered
Date NOT COVERED 12-09-02

O.D.O.T. DISTRICT 2 SURVEY OFFICE

PERSONNEL

REFERENCE NO. 10 B

SHEET OF

NOTES Hoffman

H.C. LOSHRKE

R.C. BARNHISEL

REED

DATE 4-20-88

WEATHER Windy - Cloudy

TEMP. 52°

ROUTE SR 64

COUNTY WOOD

TOWNSHIP PLAIN

SECTION 3

TS NR 10 E

TYPE MONUMENT R.R. SPK - RR SPK

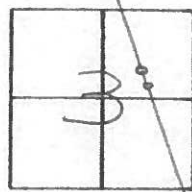
ON SURFACE - BELOW YES - YES

LEFT - 0 PAV'T. - RIGHT 4.0' Lt - 6.5' Lt

5.9 2.2 2.2 TO Rt EDGE PAVEMENT

S.L.M. 340+05 - 341+49

Set SMALL
R.R. SPIKE @
2074 Points
6-9-88



RECORD:

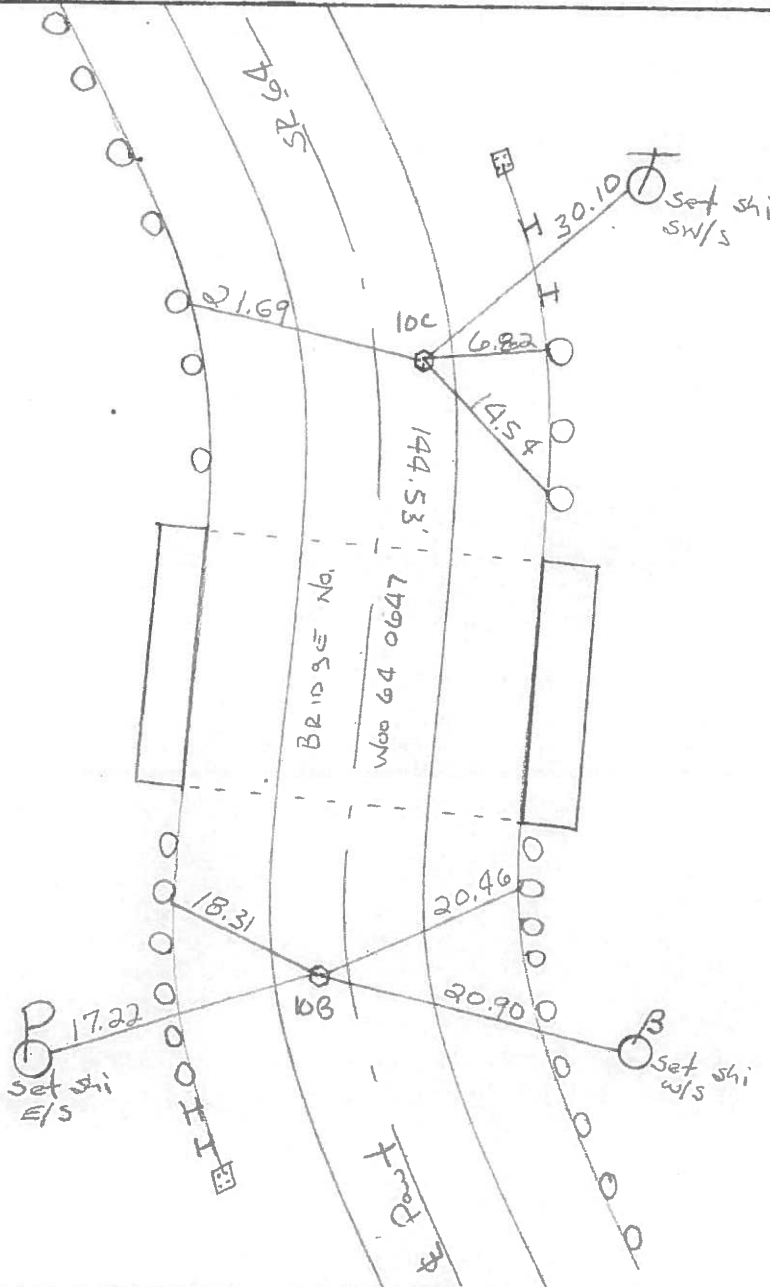
P.I. 154+45.3

$\Delta = 9^{\circ} - 05' Lt.$

RECORD:

P.I. 152+26.8

$\Delta = 8^{\circ} - 30' Rt.$



County Wood S.R. 64

Date 7-3-1979

Township Plain

Weather clear

Section 3

Temp. 70°

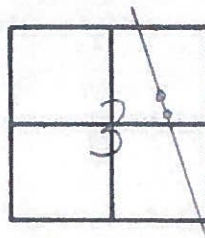
T5N, R10E

Personnel Smith

Knape

Bowers

Mead



(33)

P.I. Sta 154+45.3

$\Delta = 9^{\circ}05' \text{ Lt}$

Fd. R.R. Spike

@ Surface

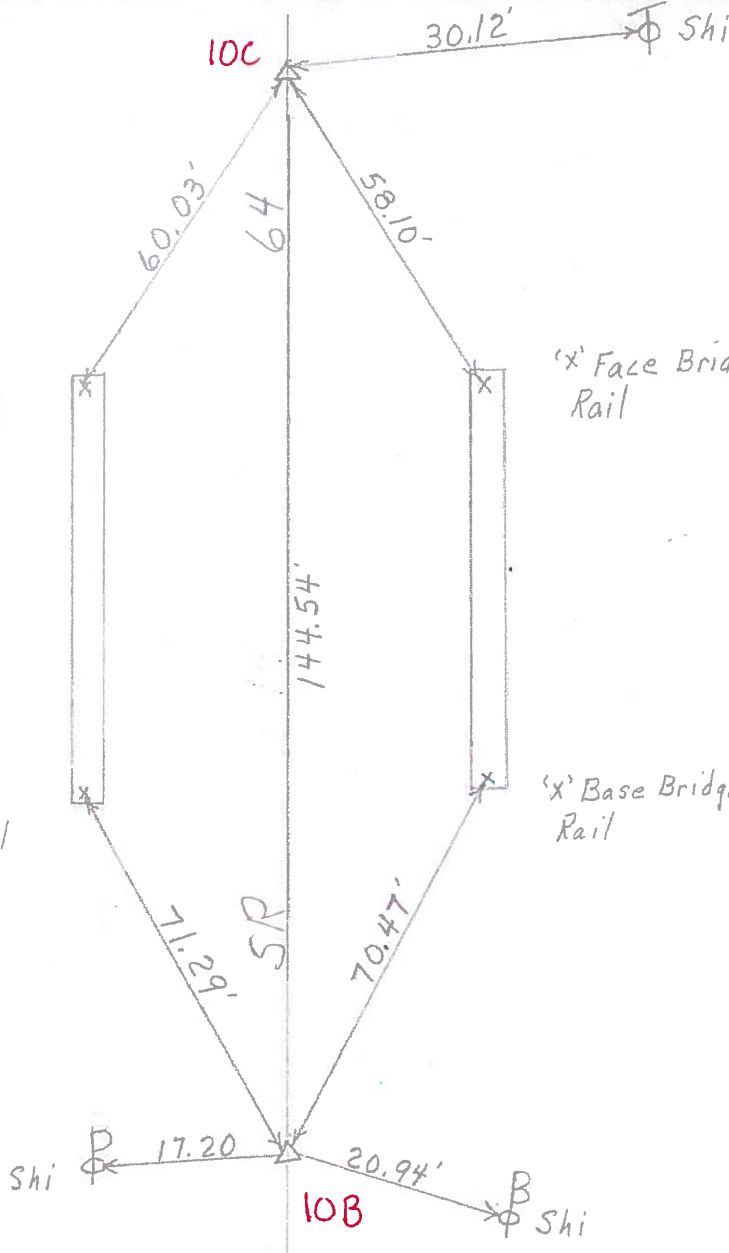
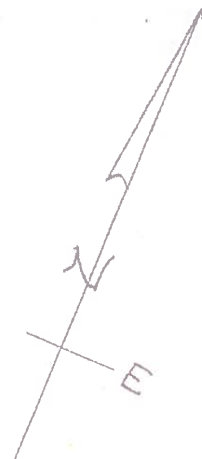
~~108~~

'x' Base Bridge Rail

'x' Face Bridge Rail

'x' Face Bridge Rail

'x' Base Bridge Rail



P.I. Sta 152+26.8

$\Delta = 8^{\circ}30' \text{ Rt.}$

Fd. R.R. Spike

@ Surface