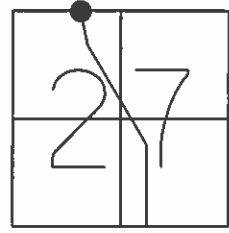


O.D.O.T. DISTRICT 2 SURVEY OFFICE

PERSONNEL _____ REFERENCE NO. 12 SHEET 31 OF 32

NOTES WESTFALL DATE 06-04-13 ROUTE S.R. 64
 H.C. ROUSOS WEATHER CLEAR COUNTY WOOD
 R.C. RHOADES TEMP. 63° F TOWNSHIP MIDDLETON
 SECTION 27
 T 6 N R 10 E

TYPE MONUMENT _____ PK/WASHER _____
 ON SURFACE - ~~BELOW~~ _____ YES _____
~~LEFT~~ - Q PAV'T - ~~RIGHT~~ _____ YES _____
 _____ TO _____ EDGE PAVEMENT
 S.L.M. 476+82
 Grid: Northing: 655,369.155 Easting: 1,638,682.231

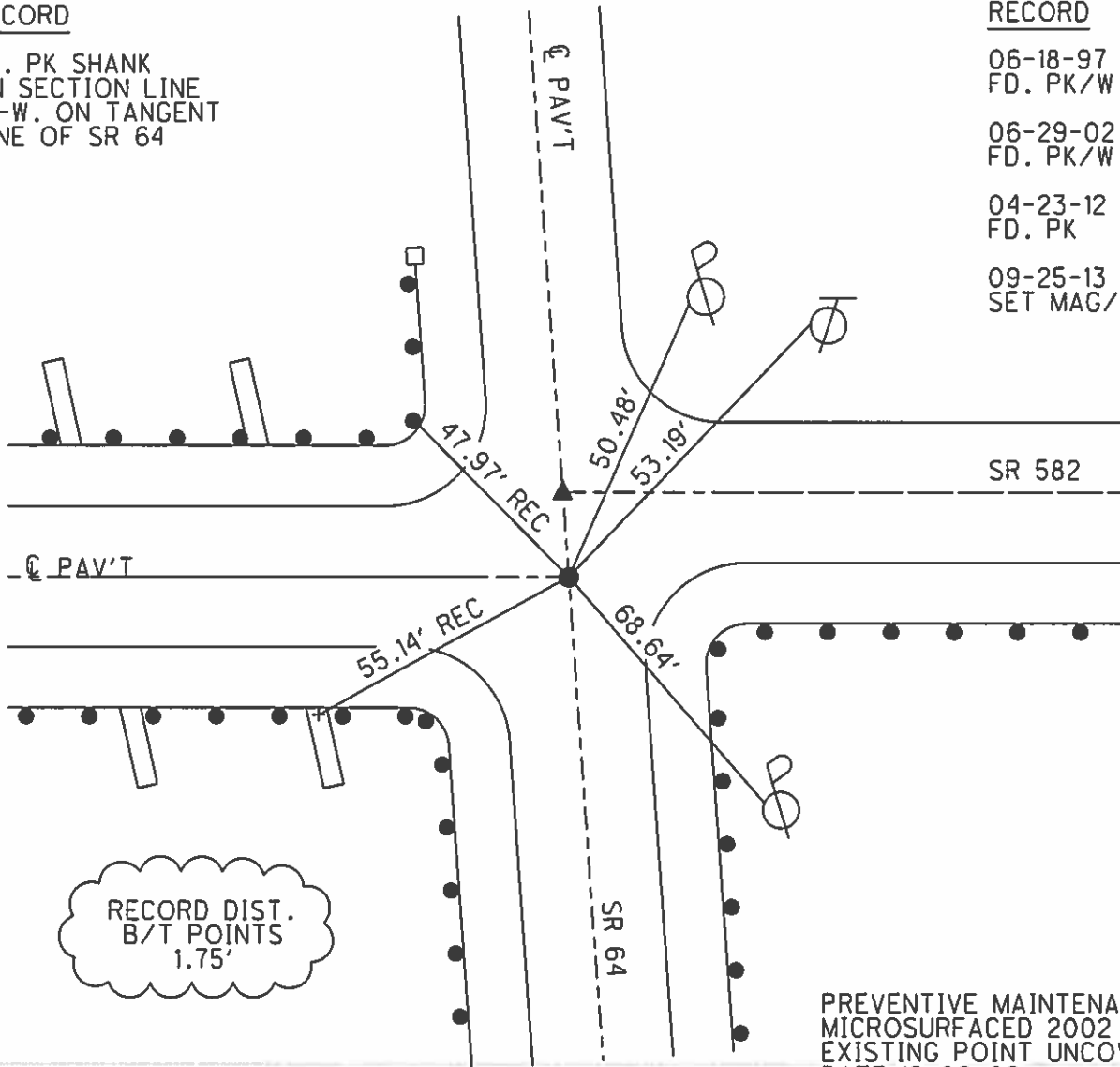


RECORD

FD. PK SHANK
 ON SECTION LINE
 E.-W. ON TANGENT
 LINE OF SR 64

RECORD

- 06-18-97 BVD
FD. PK/W
- 06-29-02 KPM
FD. PK/W
- 04-23-12 SAH
FD. PK
- 09-25-13 EBW
SET MAG/W

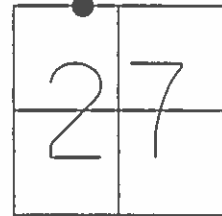


PREVENTIVE MAINTENANCE
 MICROSURFACED 2002
 EXISTING POINT UNCOVERED
 DATE 12-09-02

O.D.O.T. DISTRICT 2 SURVEY OFFICE (USE ONLY)

PERSONNEL _____ REFERENCE NO. 9C SHEET 12 OF 25
 NOTES RHOADES _____ DATE 4/8/14 ROUTE SR 582
 H.C. HOMAN _____ WEATHER FAIR COUNTY WOOD
 R.C. ROUSOS _____ TEMP. 53° TOWNSHIP MIDDLETON
 _____ GABLE _____ SECTION 27
 _____ T 6 N R 10 E

TYPE MONUMENT MAG/WASHER
 ON SURFACE - ~~BELOW~~ ON
 LEFT - CL PAV'T - RIGHT ON
_____ TO _____ EDGE PAVEMENT
 S.L.M. 476+84 (SR 64)
 Grid: Northing: 655369.158 Easting: 1638682.243

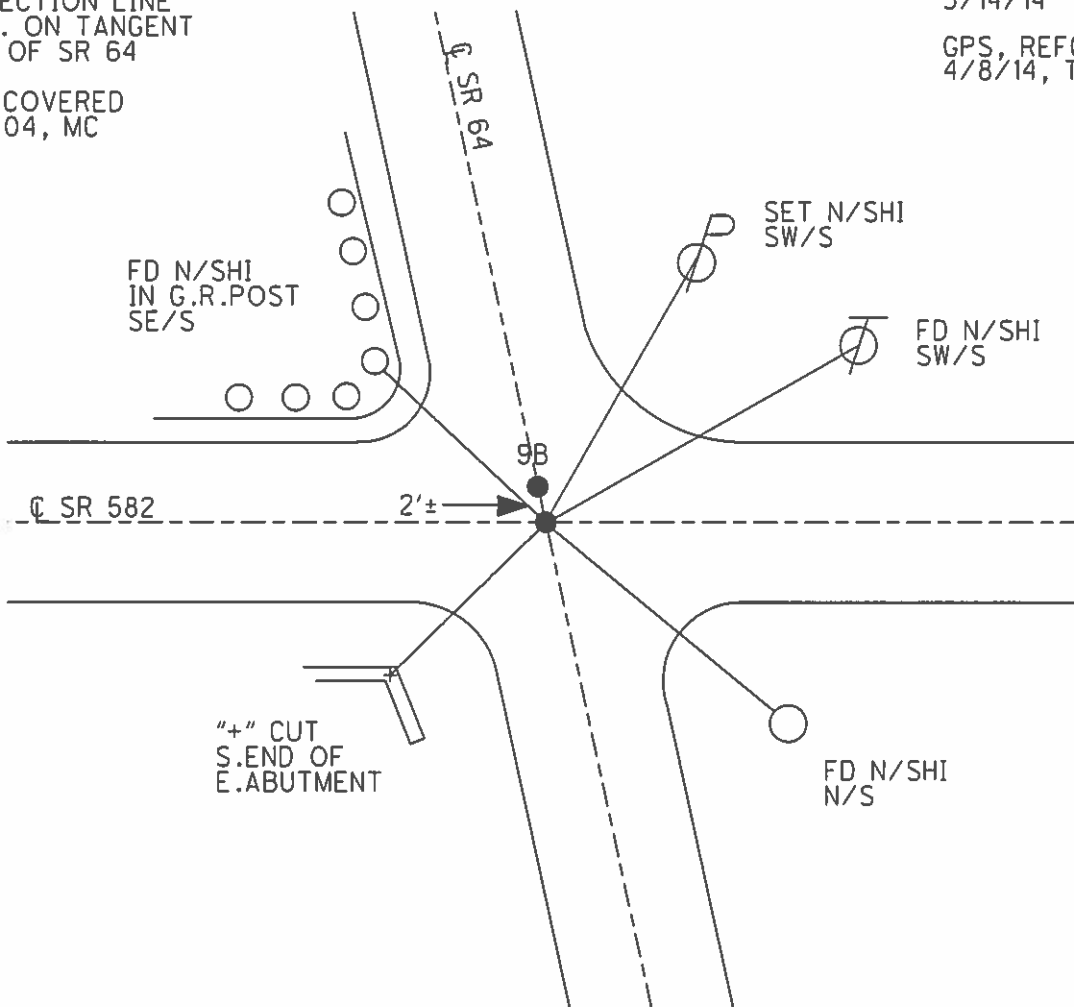


FD P.K.SHANK
 ON SECTION LINE
 E.-W. ON TANGENT
 LINE OF SR 64

NOT COVERED
 8/2/04, MC

NOT IN PROJECT
 3/14/14

GPS, REFC9
 4/8/14, TMR



O.D.O.T. DISTRICT 2 SURVEY OFFICE

PERSONNEL _____

REFERENCE NO. 12

SHEET 27 OF 27

NOTES Huss

H.C. Cordes

R.C. Van Nusen

Flag Cox

DATE 6-18-97

WEATHER Clidy-Sprink.

TEMP. +62°F

ROUTE SR-64

COUNTY Wood

TOWNSHIP Middleton

SECTION 27

T 6 N R 10 E

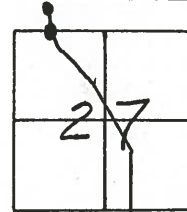
TYPE MONUMENT (A) Small RR spk (B) PK/W

~~ON SURFACE~~ - (BELOW) Yes

~~TO~~ - (E) PAV'T - FRONT (A) + (B)

TO - EDGE PAVEMENT

S.L. (A) 14+556.17 (B) 14+556.70 476+84

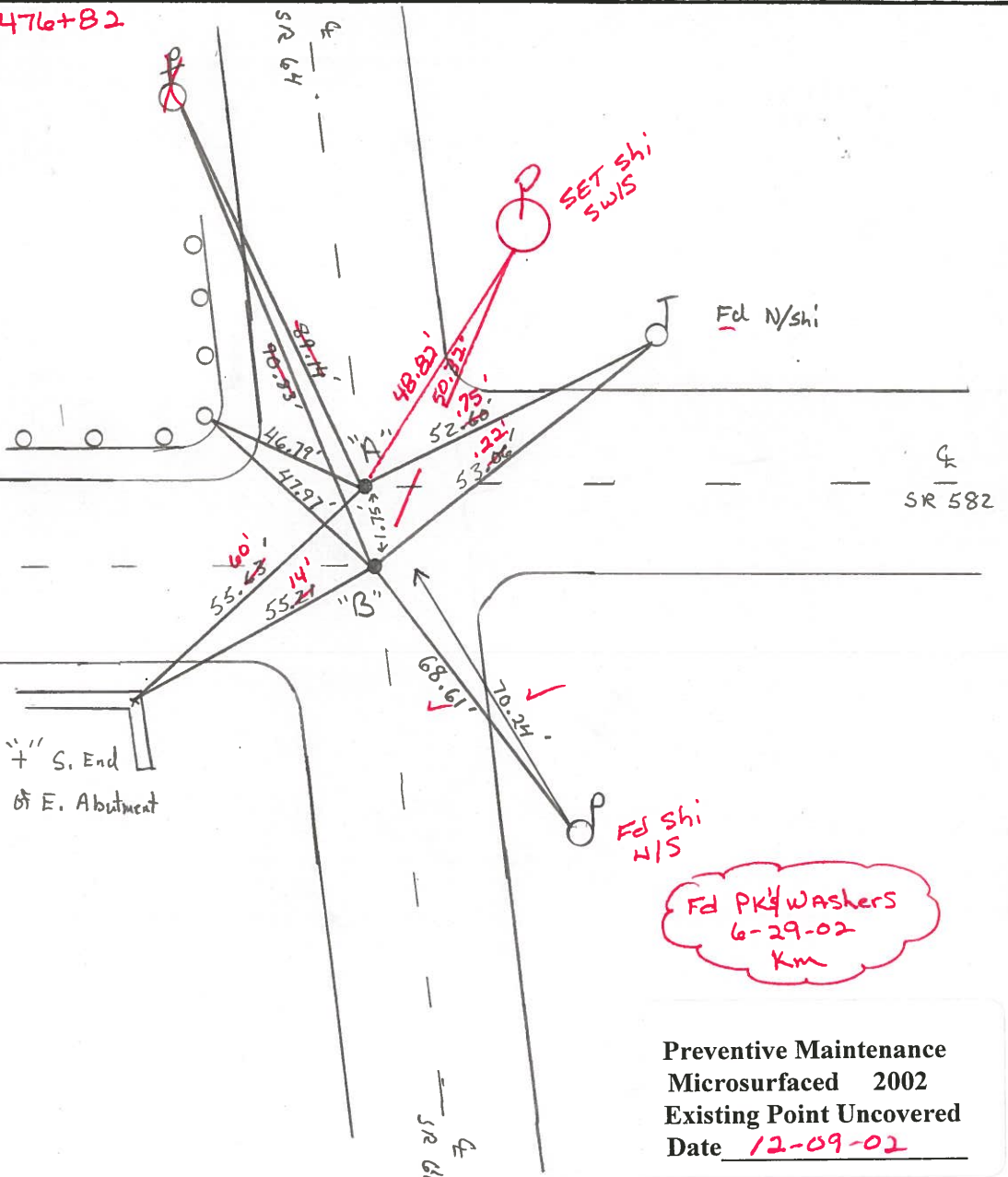


Record

(A) Small RR Spk.
PI - 110+89.9
Δ - 0°-07' Lt

(B) Fd PK Shank
on section line
E.-W. on tangent
line of SR-64

476+82



Fd PK/Washers
6-29-02
Km

Preventive Maintenance
Microsurfaced 2002
Existing Point Uncovered
Date 12-09-02

O.D.O.T. DISTRICT 2 SURVEY OFFICE

PERSONNEL _____

REFERENCE NO. 12

SHEET _____ OF _____

NOTES HOFFMAN

H.C. LOSHARKE

DATE 5-2-88

ROUTE SR 64

R.C. BARANISEL

WEATHER CLEAR

COUNTY WOOD

REED

TEMP. 68°

TOWNSHIP MIDDLETON

SECTION 27

T6 NR 10 E

TYPE MONUMENT SMALL R.R. SPIKE - P.I. "A"

ON SURFACE - BELOW yes

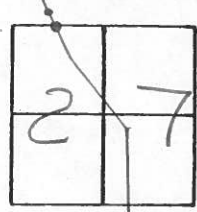
LEFT- & PAV'T. - RIGHT yes

TO EDGE PAVEMENT

S.L.M. 476+82

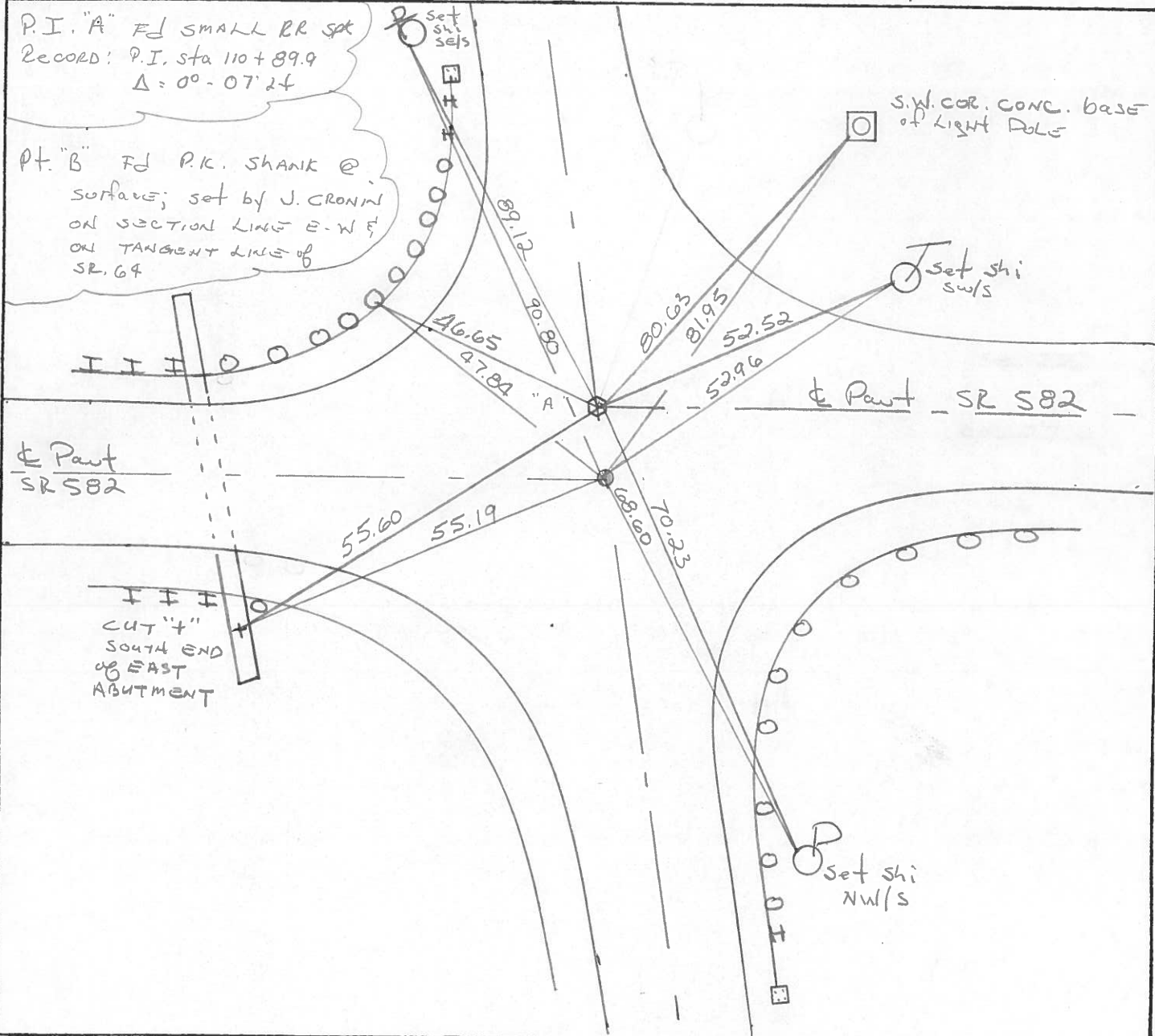
Set small RR SPIKE 6-8-88 SURT

PT "B" set P.K. WITH WASHER 6-8-88 SURT



P.I. "A" FD SMALL RR SPK
 RECORD: P.I. STA 110+89.9
 $\Delta = 00-07'24$

PT. "B" FD P.K. SHANK @ SURFACE; set by J. CROWIN ON SECTION LINE E-W & ON TANGENT LINE of SR 64



County WOOD S.R. 582 & 64

Township MIDDLETON

Section 27

TLN, R/OE

Personnel NOFFMAN

LOHRICE

HOUSEHOLDER R.C.

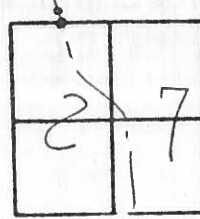
BALWISCH H.C.

12

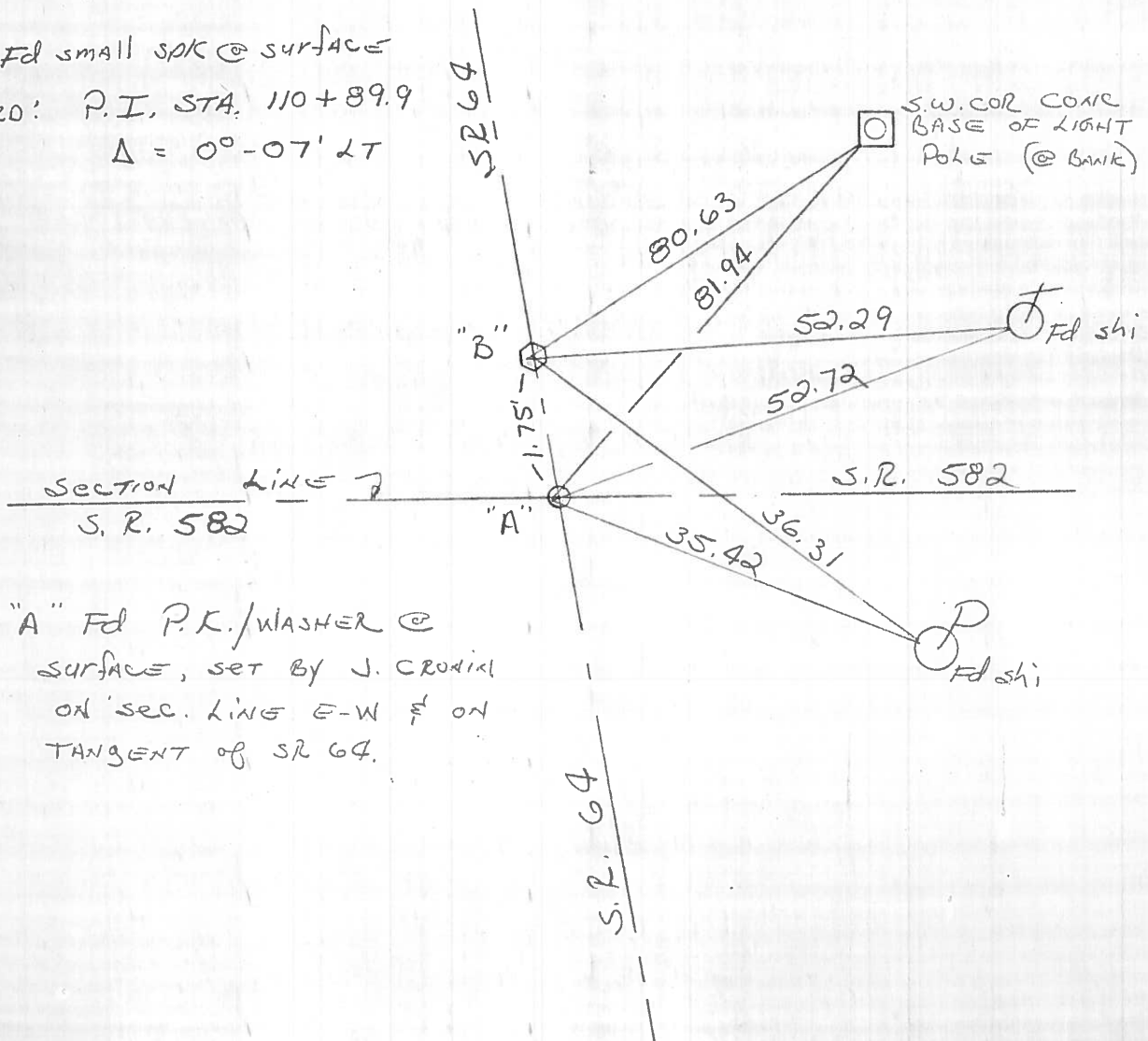
Date 6-1-84

Weather P. CLEAR

Temp. +70°



Pt. "B" Fd small spike @ surface
 Record: P.I. STA. 110+89.9
 $\Delta = 0^{\circ}-07' LT$



Pt. "A" Fd P.K./WASHER @
 SURFACE, SET BY J. CROOKI
 ON SEC. LINE E-W & ON
 TANGENT OF SR 64.

County WOOD S.R. 64

Date 7-13-79

Township MIDDLETON

Weather HAZY

Section 27

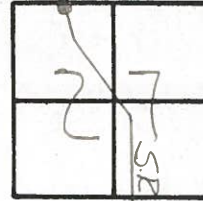
Temp. +80°

T&N, R/OE

Personnel BURNSIDE

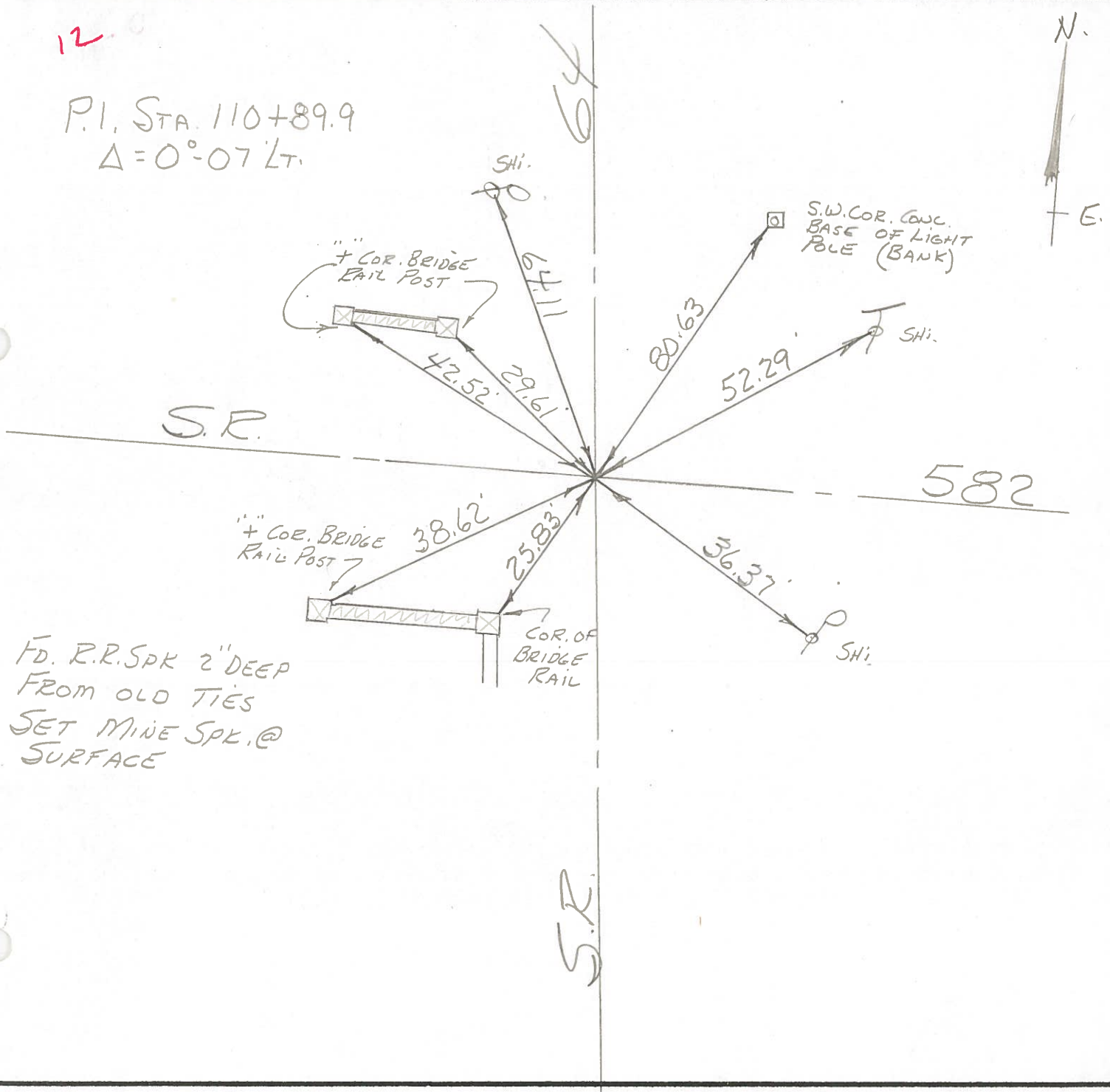
KNAPP

MEAD



12

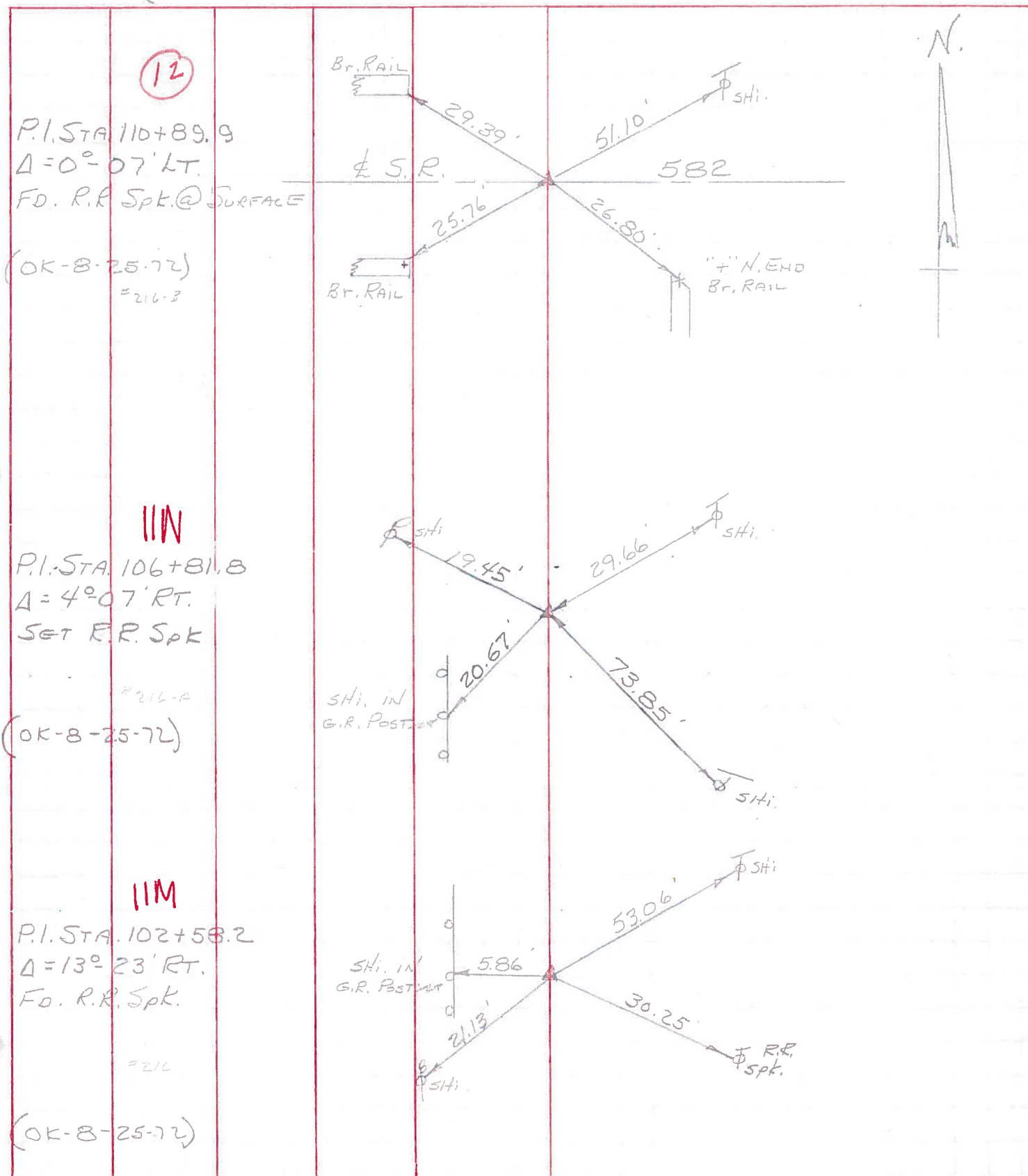
P.I. STA. 110+89.9
 $\Delta = 0^{\circ} - 07' LT.$



PERSONNEL TITLE PERSONNEL TITLE
 CK. BV _____
 BURNSIDE _____
 SMITH _____
 KISOWSKI _____

COUNTY Wood DATE 11-17-70
 S. R. # 64 WEATHER _____
 SEC. _____ TEMP. _____

DESCRIPTION (B.G. WATER LINE TIES) JOB NO. _____



IIN

P.I. STA. 110+89.9
 $\Delta = 0^\circ - 07' \text{ LT.}$
 F.D. R.R. Spk. @ SURFACE

(OK-8-25-72)
 #216-3

IIN

P.I. STA. 106+81.8
 $\Delta = 4^\circ - 07' \text{ RT.}$
 SET R.R. Spk

(OK-8-25-72)
 #216-A

IIN

P.I. STA. 102+58.2
 $\Delta = 13^\circ - 23' \text{ RT.}$
 F.D. R.R. Spk.

(OK-8-25-72)
 #216

PERSONNEL TITLE PERSONNEL TITLE

COUNTY Wood DATE OK 12-12-57

S. R. #64 WEATHER OK-11-16-70

SEC. TEMP.

DESCRIPTION B.G. WATER LINE TIES JOB NO.

LEFT CENTER LINE RIGHT

P.I. 101+43.32
FD. P.K.
11-16-70

#214

P.I. 94+62.73 plumbed
FD 4" F.T. ON END
WITH 1/2" IRON ROD
IN CTR.
11-16-70

#215

P.I. 63+30.25
FD. R.R. SPK.
11-17-70

#216

P.I. 59+05.17
SET P.K.
11-17-70

#216A

P.I. 54+96.57
FD. R.R. SPK @ SURFACE
11-17-70

#216B

P.I. 42+56.65
TIES GONE
DID NOT FIND
11-17-70

#216C

