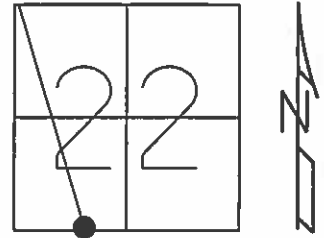


O.D.O.T. DISTRICT 2 SURVEY OFFICE

PERSONNEL	REFERENCE NO.	12 AA	SHEET	32	OF	32
NOTES	WESTFALL	DATE	06-04-13	ROUTE	S.R. 64	
H.C.	ROUSOS	WEATHER	CLEAR	COUNTY	WOOD	
R.C.	RHOADES	TEMP.	63° F	TOWNSHIP	MIDDLETON	
				SECTION	27	
				T	6	N
				R	10	E

TYPE MONUMENT RRSPK
 ON SURFACE - ~~BELOW~~ YES
~~LEFT~~ - Q PAV'T - ~~RIGHT~~ YES
7.3' TO LT. EDGE PAVEMENT
 S.L.M. 476+84
 Grid: Northing: 655,370.902 Easting: 1,638,681.920

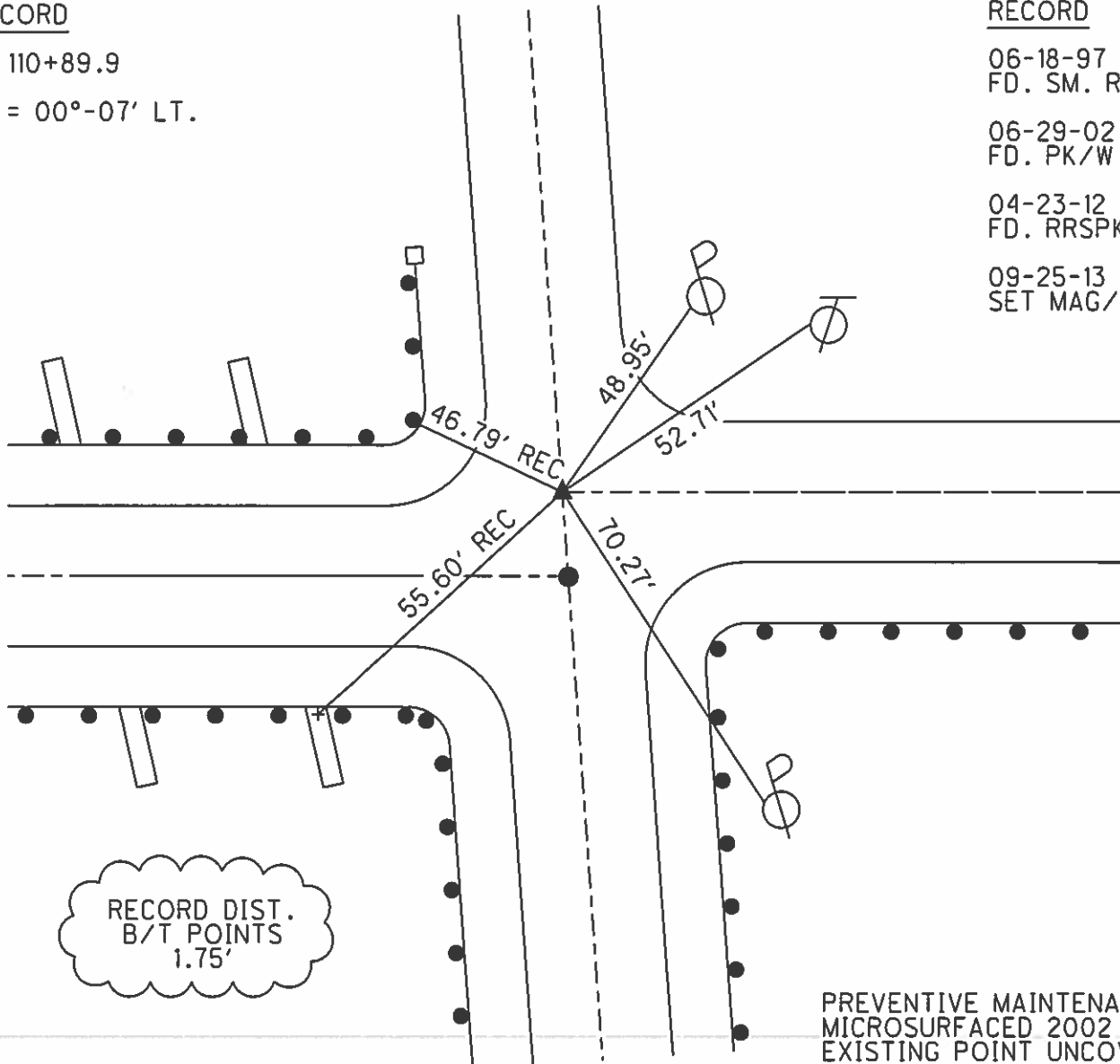


RECORD

PI 110+89.9
 $\Delta = 00^\circ-07' \text{ LT.}$

RECORD

- 06-18-97 BVD
FD. SM. RRSPK
- 06-29-02 KPM
FD. PK/W
- 04-23-12 SAH
FD. RRSPK
- 09-25-13 EBW
SET MAG/W

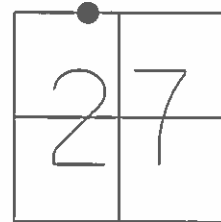


PREVENTIVE MAINTENANCE
 MICROSURFACED 2002
 EXISTING POINT UNCOVERED
 DATE 12-09-02

O.D.O.T. DISTRICT 2 SURVEY OFFICE (USE ONLY)

PERSONNEL	REFERENCE NO.	<u>9B</u>	SHEET	<u>11</u>	OF	<u>25</u>
NOTES	RHOADES	DATE	<u>4/8/14</u>	ROUTE	<u>SR 582</u>	
H.C.	HOMAN	WEATHER	<u>FAIR</u>	COUNTY	<u>WOOD</u>	
R.C.	ROUSOS	TEMP.	<u>53°</u>	TOWNSHIP	<u>MIDDLETON</u>	
	GABLE			SECTION	<u>27</u>	
				T. <u>6</u> N	R. <u>10</u> E	

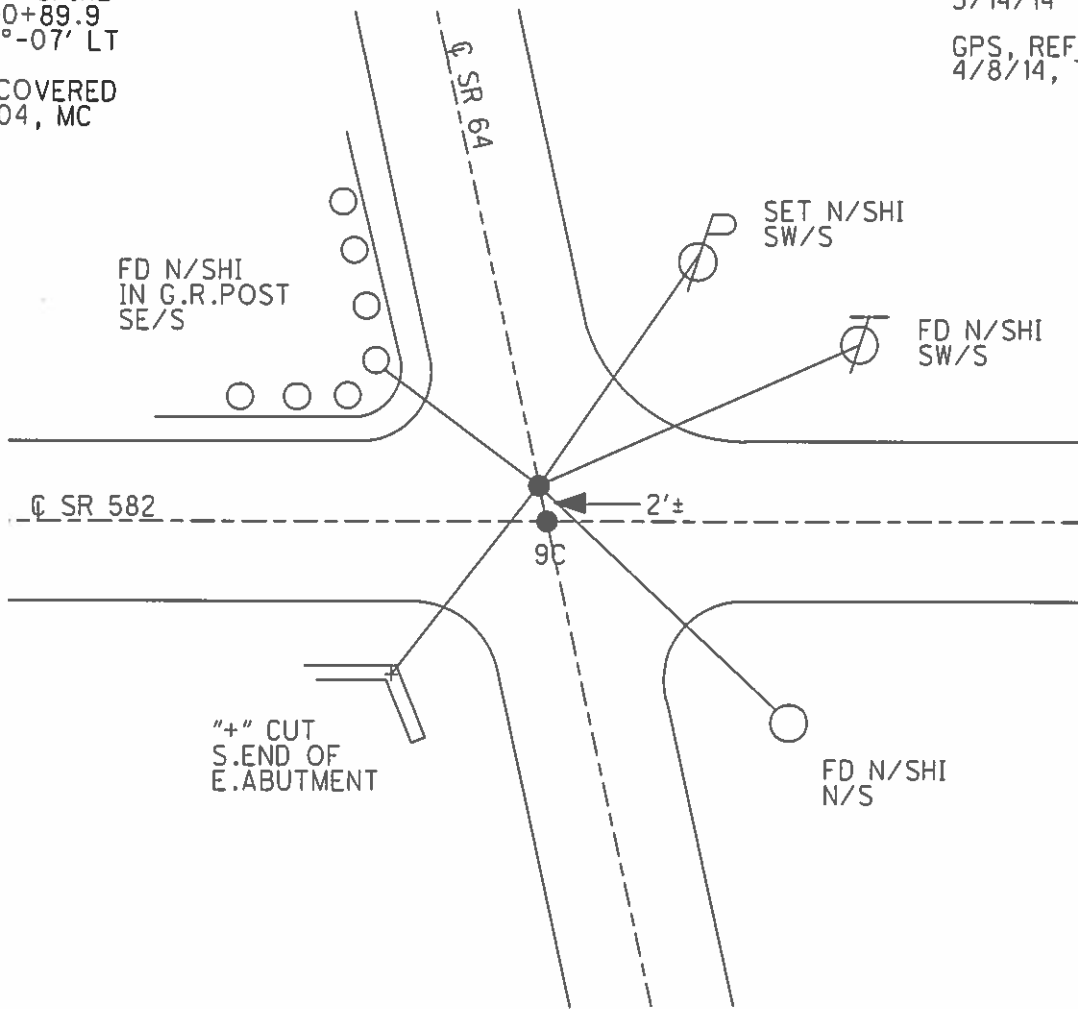
TYPE MONUMENT MAG/W
 ON SURFACE - ~~BELOW~~ ON
 LEFT - Q PAV'T - RIGHT ON
TO EDGE PAVEMENT
 S.L.M. (476+82) SR 64



Grid: Northing: 655370.895 Easting: 1638681.973

RECORD:
 SM.R.R.SPIKE
 PI= 110+89.9
 Δ= 0°-07' LT
 NOT COVERED
 8/2/04, MC

NOT IN PROJECT
 3/14/14
 GPS, REFB9
 4/8/14, TMR



O.D.O.T. DISTRICT 2 SURVEY OFFICE

PERSONNEL _____

REFERENCE NO. 12

SHEET 27 OF 27

NOTES Huss

H.C. Cordes

R.C. Van Nusen

Flag Cox

DATE 6-18-97

WEATHER Clidy-Sprink.

TEMP. +62°F

ROUTE SR-64

COUNTY Wood

TOWNSHIP Middleton

SECTION 27

T 6 N R 10 E

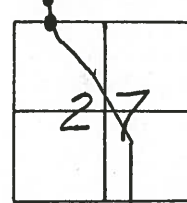
TYPE MONUMENT (A) Small RR spk (B) PK/W

~~ON SURFACE~~ - (BELOW) Yes

~~TO~~ - (E) PAV'T - FRONT (A) + (B)

TO - EDGE PAVEMENT

S.L. (A) 14+556.17 (B) 14+556.70 476+84



Record

(A) Small RR Spk.

PI - 110+89.9

Δ - 0°-07' Lt

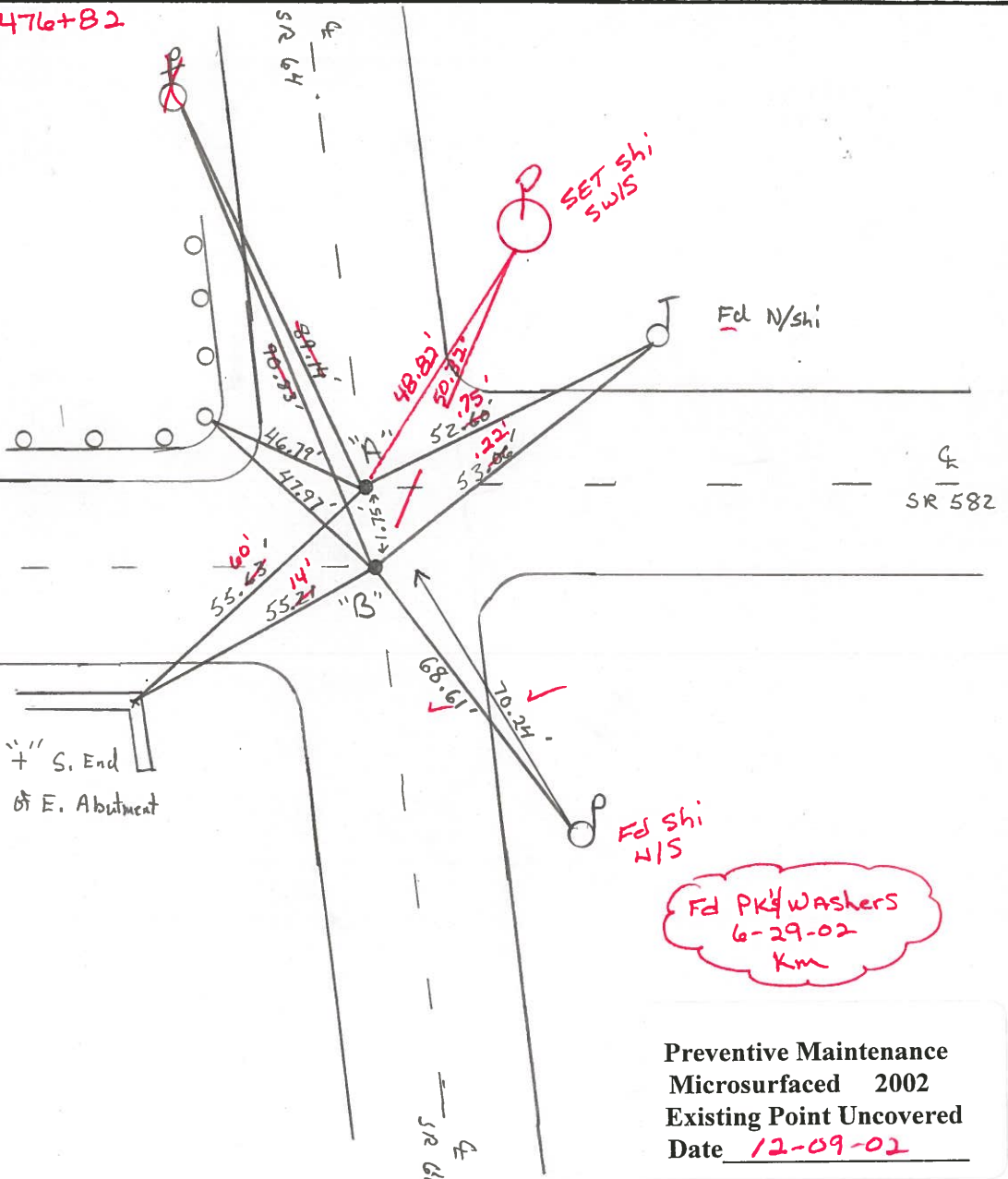
(B) Fd PK Shank

on section line

E.-W. on tangent

line of SR-64

476+82



Fd PK Washers
6-29-02
Km

Preventive Maintenance
Microsurfaced 2002
Existing Point Uncovered
Date 12-09-02

O.D.O.T. DISTRICT 2 SURVEY OFFICE

PERSONNEL

REFERENCE NO. 12

SHEET OF

NOTES HOFFMAN

H.C. LOSHARKE

DATE 5-2-88

ROUTE SR 64

R.C. BARANISEL

WEATHER CLEAR

COUNTY WOOD

REED

TEMP. 68°

TOWNSHIP MIDDLETON

SECTION 27

T6 NR 10 E

TYPE MONUMENT SMALL R.R. SPIKE - P.I. "A"

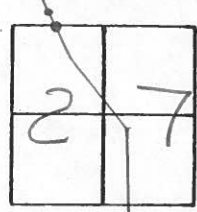
ON SURFACE - BELOW yes

LEFT- & PAV'T. - RIGHT yes

 TO EDGE PAVEMENT

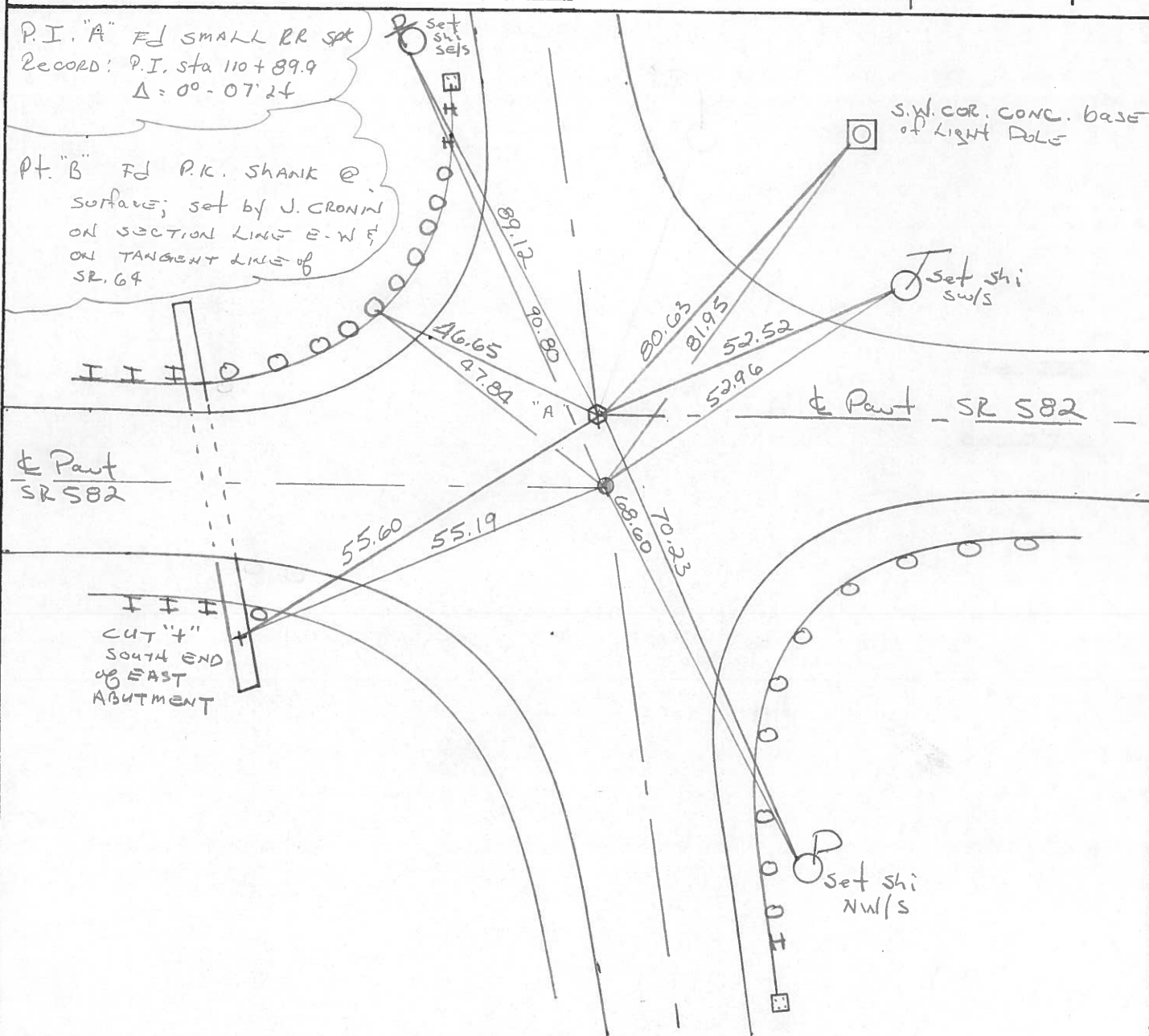
S.L.M. 476+82

Set small RR SPIKE 6-8-88 SURT
PT "B" set P.K. WITH WASHER 6-8-88 SURT



P.I. "A" FD SMALL RR SPK
RECORD: P.I. STA 110+89.9
 $\Delta = 00-07'24$

PT. "B" FD P.K. SHANK @ SURFACE; set by J. CROWIN ON SECTION LINE E-W & ON TANGENT LINE of SR 64



County WOOD S.R. 582 & 64

Township MIDDLETON

Section 27

TLN, R/OE

Personnel NOFFMAN

LOHRICE

HOUSEHOLDER R.C.

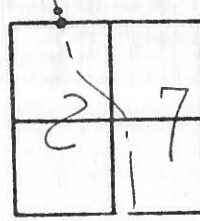
BALNHISEH H.C.

12

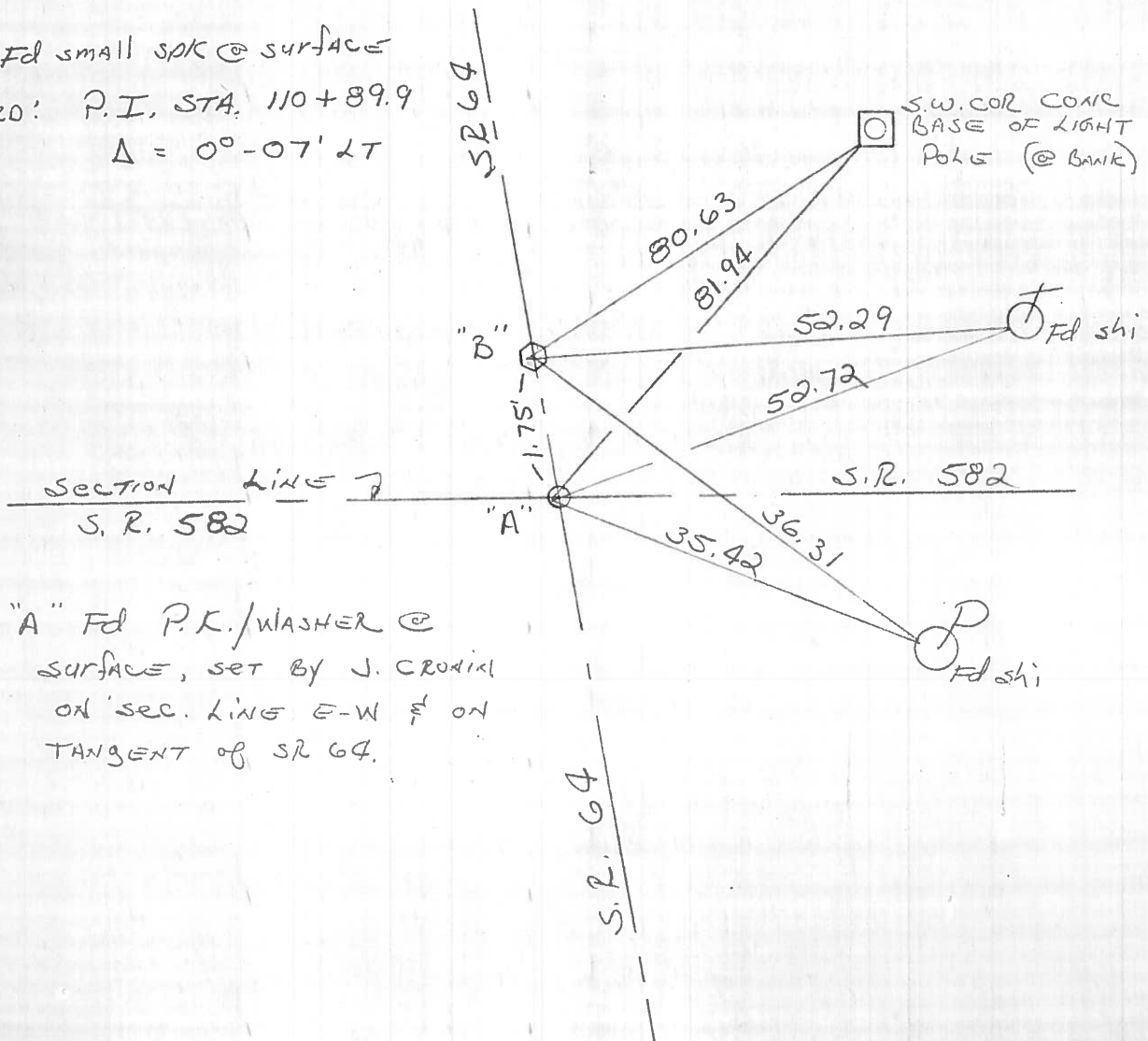
Date 6-1-84

Weather P. CLEAR

Temp. +70°



Pt. "B" Fd small spike @ surface
 Record: P.I. STA. 110+89.9
 $\Delta = 0^{\circ}-07' LT$



Pt. "A" Fd P.K./WASHER @
 SURFACE, SET BY J. CROOKI
 ON SEC. LINE E-W & ON
 TANGENT OF SR 64.

County WOOD S.R. 64

Township MIDDLETON

Section 27

T6N, R10E

Personnel BURNSIDE

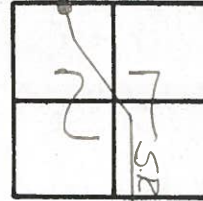
KNAPP

MEAD

Date 7-13-79

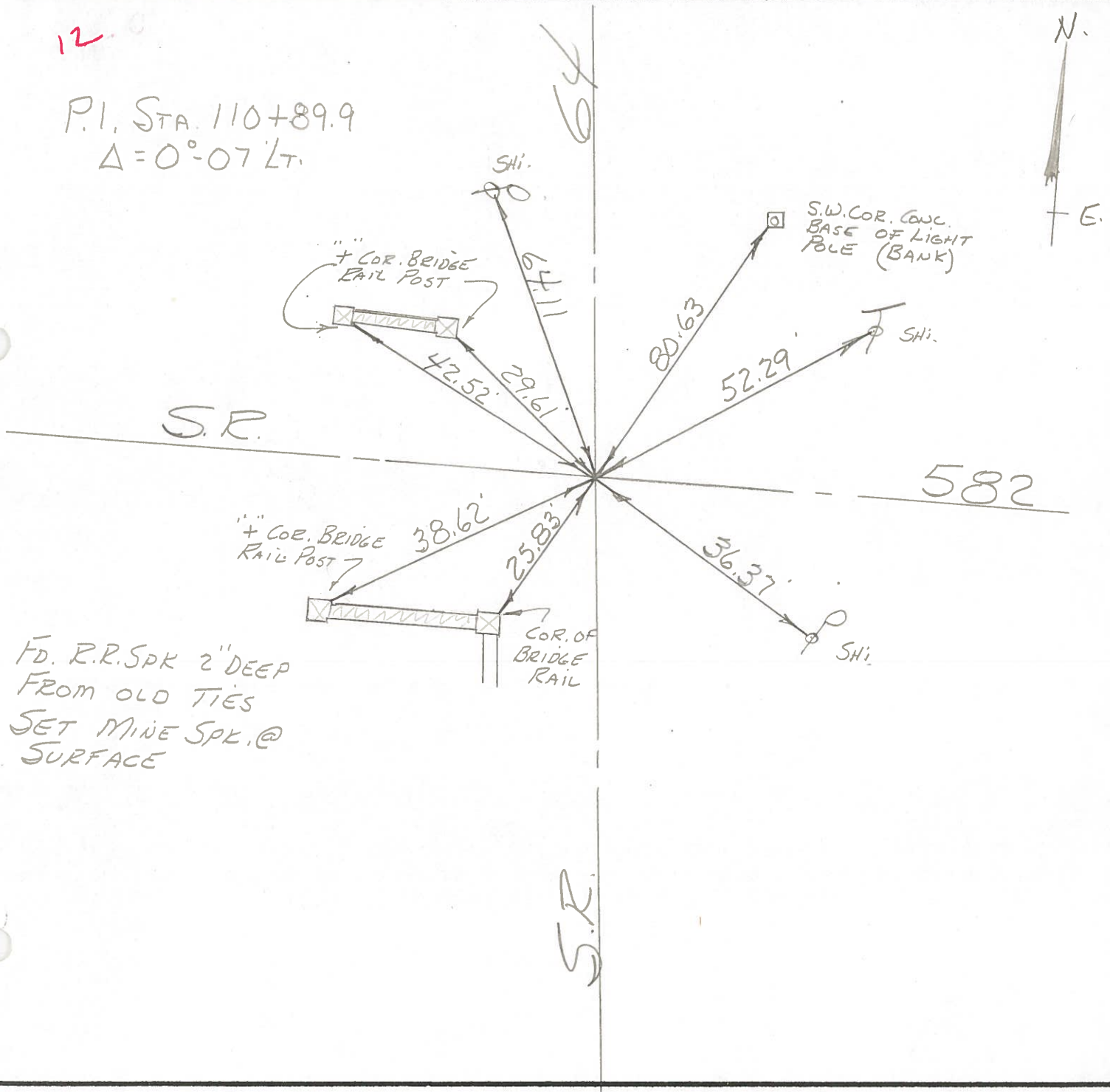
Weather HAZY

Temp. +80°



12

P.I. STA. 110+89.9
 $\Delta = 0^{\circ} - 07' LT.$



FD. R.R. SPK 2" DEEP
FROM OLD TIES
SET MINE SPK. @
SURFACE

PERSONNEL TITLE PERSONNEL TITLE
 CK. BV _____
 BURNSIDE _____
 SMITH _____
 KISOWSKI _____

COUNTY Wood DATE 11-17-70
 S. R. # 64 WEATHER _____
 SEC. _____ TEMP. _____

DESCRIPTION (B.G. WATER LINE TIES) JOB NO. _____

