

O.D.O.T. DISTRICT 2 SURVEY OFFICE (USE ONLY)

PERSONNEL \_\_\_\_\_ REFERENCE NO. 12 A SHEET 1 OF 22

NOTES \_\_\_\_\_ HUSS \_\_\_\_\_ DATE 5-13-11 \_\_\_\_\_ ROUTE SR 64  
 H.C. \_\_\_\_\_ HUSS \_\_\_\_\_ WEATHER FAIR \_\_\_\_\_ COUNTY WOOD  
 R.C. \_\_\_\_\_ CANTERBURY \_\_\_\_\_ TEMP. 65° \_\_\_\_\_ TOWNSHIP MIDDLETON  
 \_\_\_\_\_ \_\_\_\_\_ SECTION 22  
 \_\_\_\_\_ \_\_\_\_\_ T 6 N R 10 E

TYPE MONUMENT \_\_\_\_\_ P.K.SHANK \_\_\_\_\_

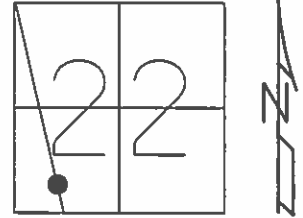
ON SURFACE ~~BELOW~~ ON \_\_\_\_\_

~~LEFT~~ - CL PAV'T - RIGHT 3.5'

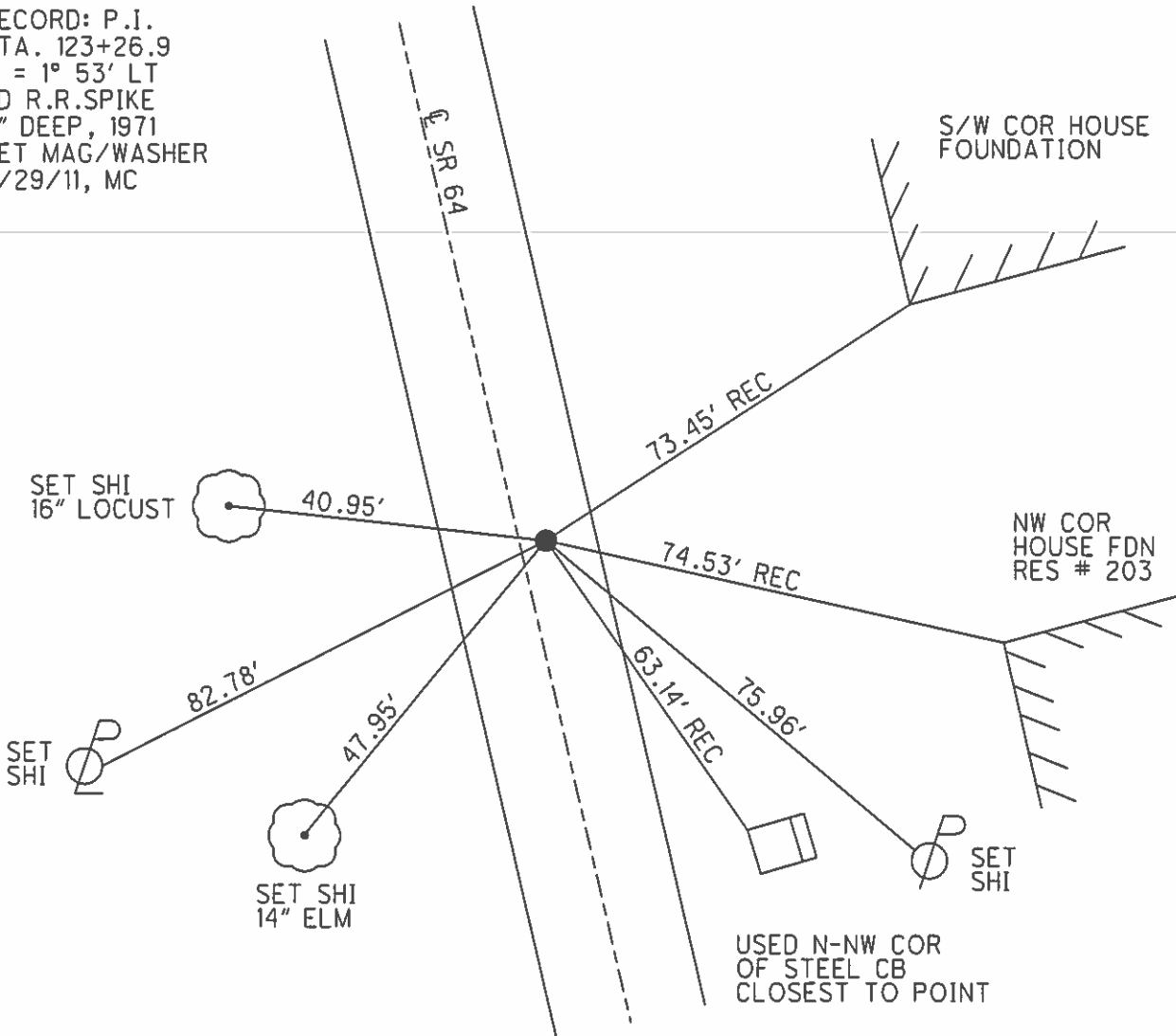
11' TO RT EDGE PAVEMENT

S.L.M. \_\_\_\_\_ 489+18.90 \_\_\_\_\_

Grid: Northing: 656587.641 Easting: 1638440.322



RECORD: P.I.  
 STA. 123+26.9  
 $\Delta = 1^\circ 53' \text{ LT}$   
 FD R.R.SPIKE  
 3" DEEP, 1971  
 SET MAG/WASHER  
 7/29/11, MC



# O.D.O.T. DISTRICT 2 SURVEY OFFICE

PERSONNEL \_\_\_\_\_

REFERENCE NO. 12-A

SHEET \_\_\_\_\_ OF \_\_\_\_\_

NOTES BARNHISEL

H.C. HOFFMAN

R.C. Loehke

DATE 9-6-89

WEATHER cloudy

TEMP. +75°

ROUTE S.E. 64

COUNTY WOOD

TOWNSHIP Middleton

SECTION 22

T. 6 N. R. 10 E

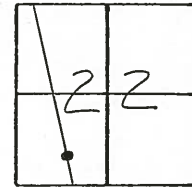
TYPE MONUMENT Sm RR Spk

ON SURFACE - ~~BELOW~~ yes

LEFT - ~~CL~~ PAV'T. - RIGHT 3.3

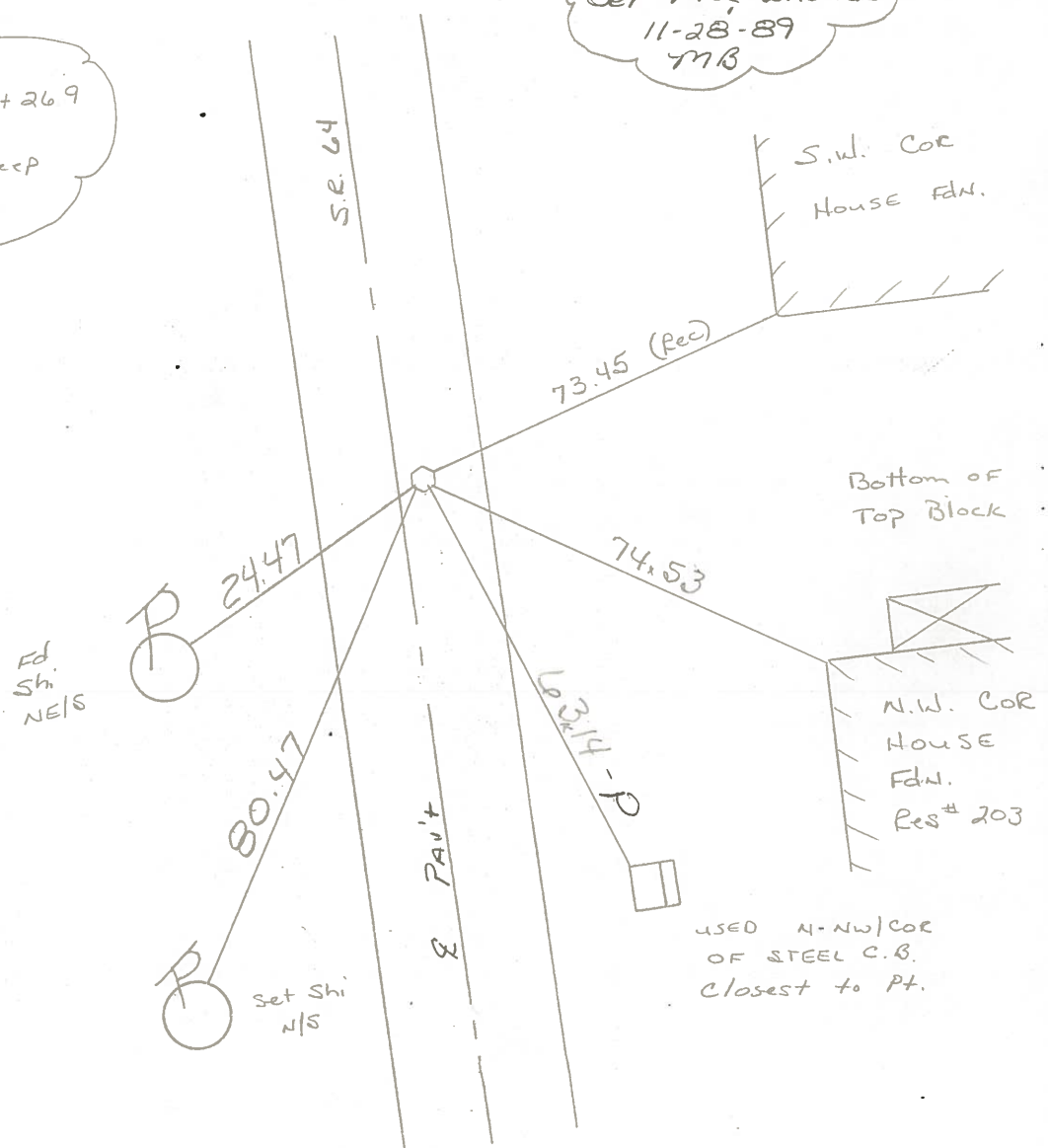
90 TO RT EDGE PAVEMENT

S.L.M. 489+23



Record:  
 P.I. STA: 123+26.9  
 Δ = 10.53' Lt  
 R.R. SPK 3" Deep  
 (6-15-71)

Set PK & Washer  
 11-28-89  
 MB



Fd. Shi N/S

Set Shi N/S

USED N-W COR OF STEEL C.B. Closest to Pt.

County WOOD S.R. 64

Township MIDDLETON

Section 22

T6N, R10E

Personnel BURNSIDE

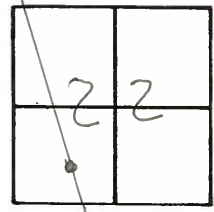
KNAPPE

MEAD

Date 7-13-79

Weather HAZY

Temp. +82°



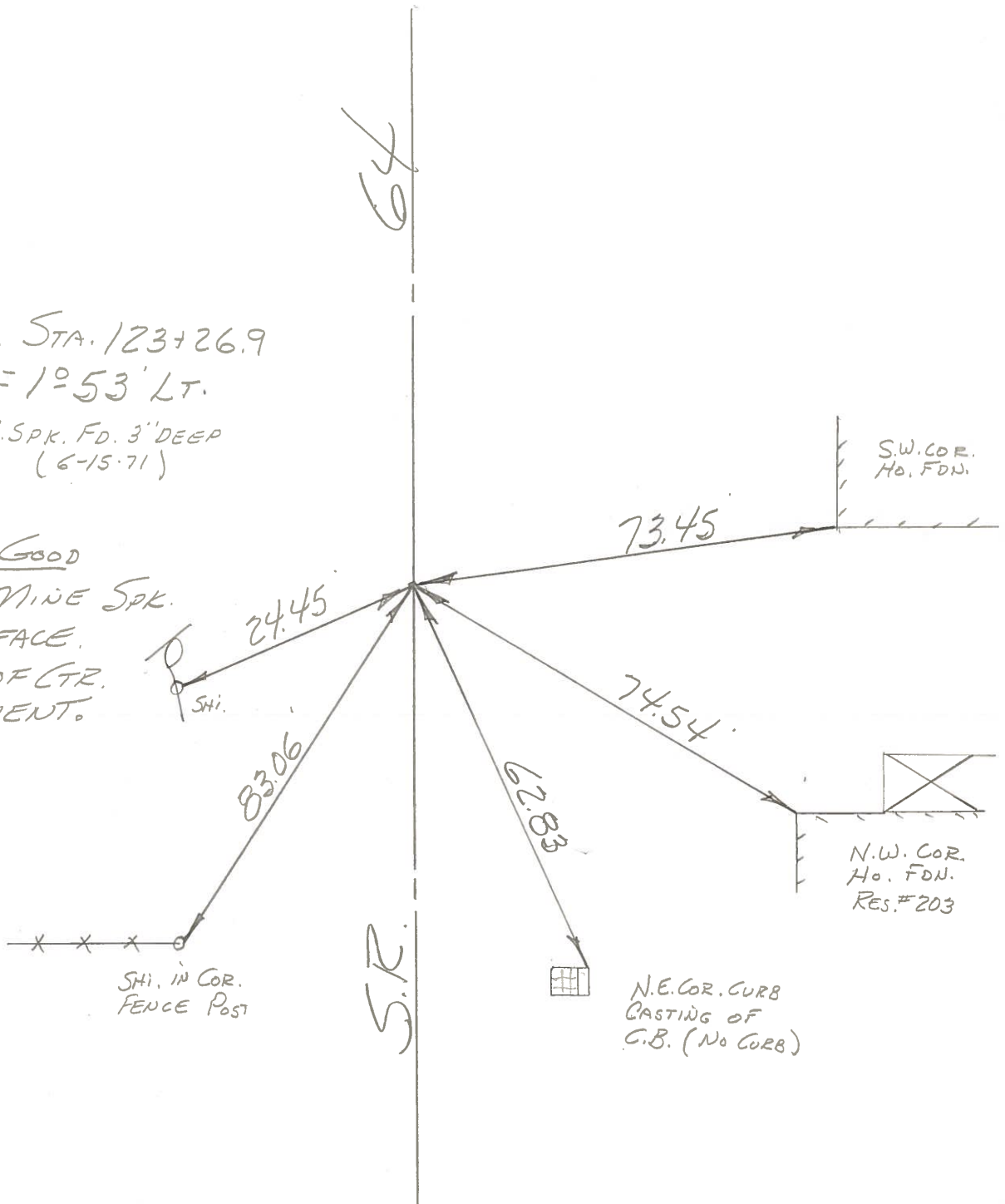
12-A

P.I. STA. 123+26.9

$\Delta = 1^{\circ}53' LT.$

R.R. SPK. FD. 3" DEEP  
(6-15-71)

TIES GOOD  
SET MINE SPK.  
@ SURFACE.  
3'± RT. OF CTR.  
PAVEMENT.



SHI. IN COR.  
FENCE POST

N.E. COR. CURB  
CASTING OF  
C.B. (NO CORB)

N.W. COR.  
Ho. FDN.  
RES. #203

S.W. COR.  
Ho. FDN.

PERSONNEL	TITLE	PERSONNEL	TITLE
BURNSIDE		Rocchini	
SMITH			
BOWERS			
HOLCOMBE			

COUNTY WOOD DATE 6-15-71  
 S. R. 64 WEATHER CLEAR  
 SEC. HASKINS, OHIO TEMP. +68°

DESCRIPTION \_\_\_\_\_ LEFT \_\_\_\_\_ CENTER LINE \_\_\_\_\_ RIGHT \_\_\_\_\_ JOB NO. \_\_\_\_\_

