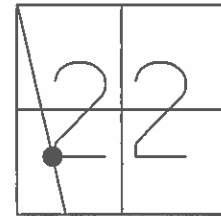


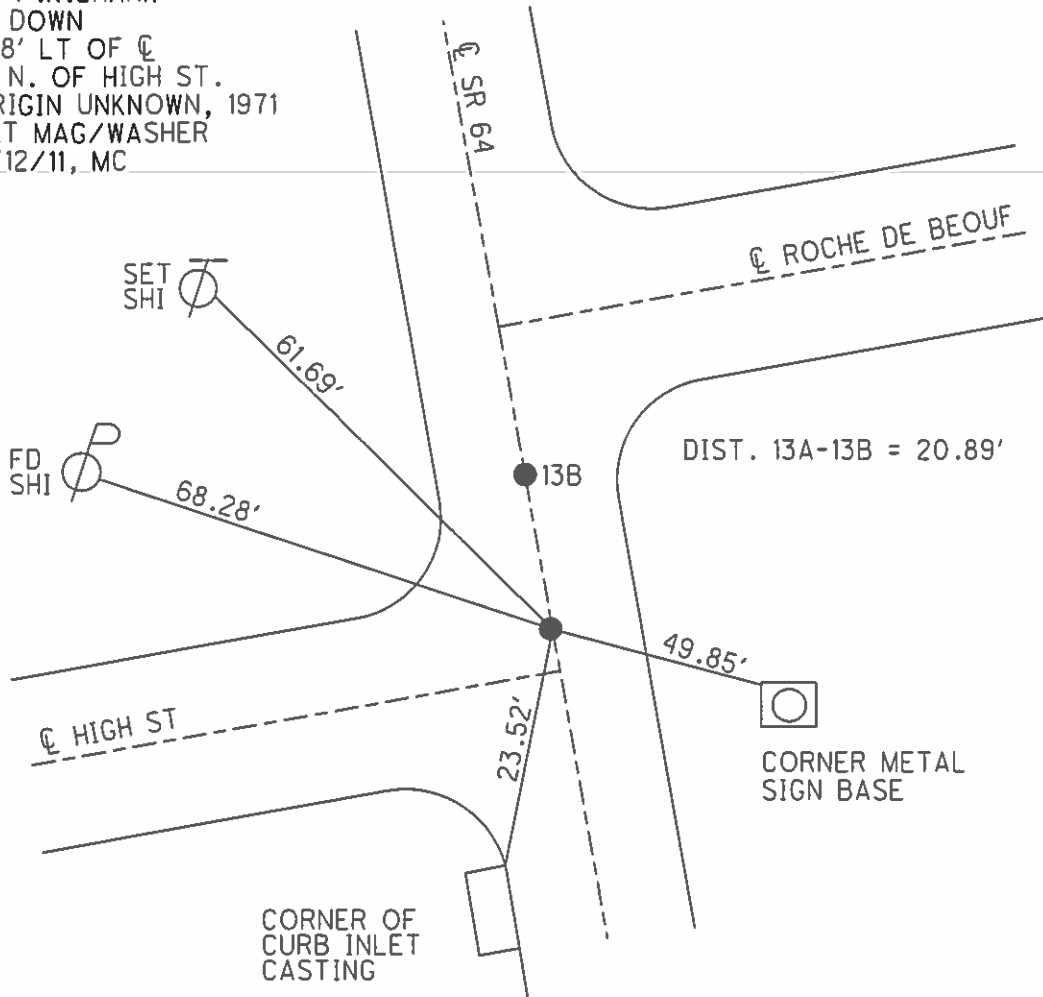
O.D.O.T. DISTRICT 2 SURVEY OFFICE (USE ONLY)

PERSONNEL _____ REFERENCE NO. 13 A SHEET 5 OF 22
 NOTES _____ HUSS DATE 5-13-11 ROUTE SR 64
 H.C. _____ HUSS WEATHER FAIR COUNTY WOOD
 R.C. _____ CANTERBURY TEMP. 67° TOWNSHIP MIDDLETON
 _____ SECTION 22
 _____ T 6 N R 10 E

TYPE MONUMENT _____ P.K.SHANK
 ON SURFACE - ~~BELOW~~ ON _____
 LEFT - ☉ PAV'T - ~~RIGHT~~ 0.33'
 _____ TO _____ EDGE PAVEMENT
 S.L.M. 499+86.89
 Grid: Northing: 657621.943 Easting: 1638174.707



RECORD:
 FD P.K.SHANK
 2" DOWN
 0.8' LT OF ☉
 2' N. OF HIGH ST.
 ORIGIN UNKNOWN, 1971
 SET MAG/WASHER
 8/12/11, MC



O.D.O.T. DISTRICT 2 SURVEY OFFICE

PERSONNEL

REFERENCE NO. 13-A

SHEET OF

NOTES BARNHISEL

H.C. HOFFMAN

R.C. Loehke

DATE 9-7-89

WEATHER cloudy

TEMP. +80°

ROUTE S.E. 64

COUNTY WOOD

TOWNSHIP Middleton

SECTION 22

T 6 N R 10 E

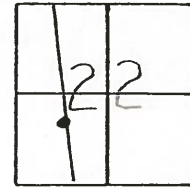
TYPE MONUMENT P.K. NAIL

ON SURFACE - BELOW yes

LEFT - & PAV'T. - RIGHT yes

- TO - EDGE PAVEMENT

S.L.M. 500 + 15



RECORD:
 P.I. STA: 134+17
 Δ: 0°-03' Lt
 Fd Boat Spk 1" DEEP
 Set P.K. @ Surface

Set PK & Washer Pt "B"
 Set PK. - Pt "A"
 11-28-89
 MB

