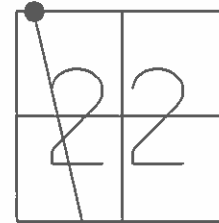


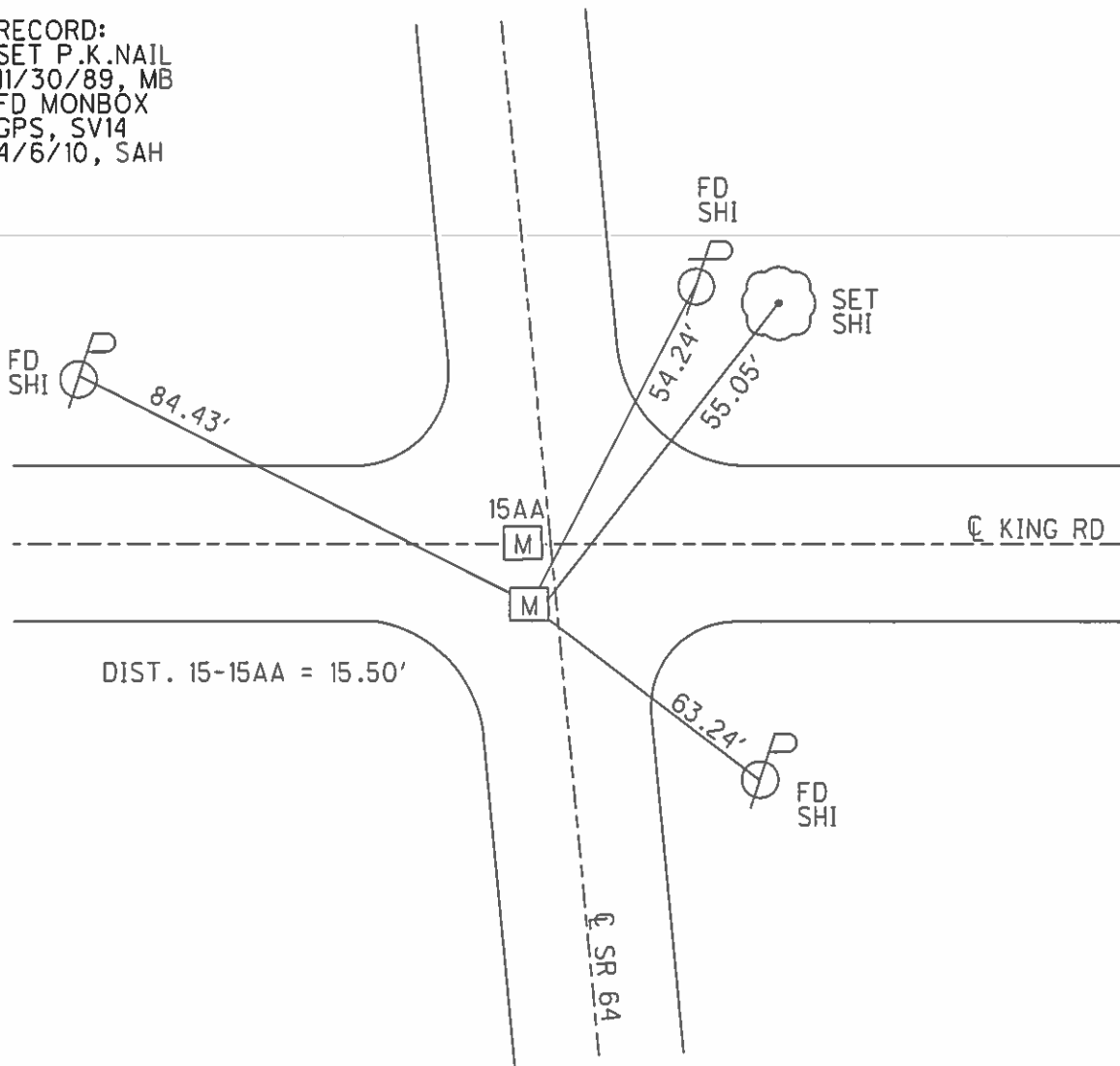
O.D.O.T. DISTRICT 2 SURVEY OFFICE (USE ONLY)

PERSONNEL _____ REFERENCE NO. 15 SHEET 13 OF 22
 NOTES FINGER _____ DATE 5-17-11 ROUTE SR 64
 H.C. HUSS WEATHER CLOUDY COUNTY WOOD
 R.C. CANTERBURY TEMP. 49° TOWNSHIP MIDDLETON
 _____ SECTION 22
 _____ T 6 N R 10 E

TYPE MONUMENT MON BOX
 ON SURFACE - ~~BELOW~~ ON
 LEFT - ☉ PAV'T - RIGHT -
- TO - EDGE PAVEMENT
 S.L.M. 531+75.78
 Grid: Northing: 660711.886 Easting: 1637386.860



RECORD:
 SET P.K.NAIL
 11/30/89, MB
 FD MONBOX
 GPS, SV14
 4/6/10, SAH



O.D.O.T. DISTRICT 2 SURVEY OFFICE

PERSONNEL

REFERENCE NO. 15

SHEET OF

NOTES BARNHISEL

H.C. HOFFMAN

R.C. Locheke

DATE 9-7-89

WEATHER Partly - cloudy

TEMP. +80°

ROUTE SE 64

COUNTY Wood

TOWNSHIP Middleton

SECTION 22

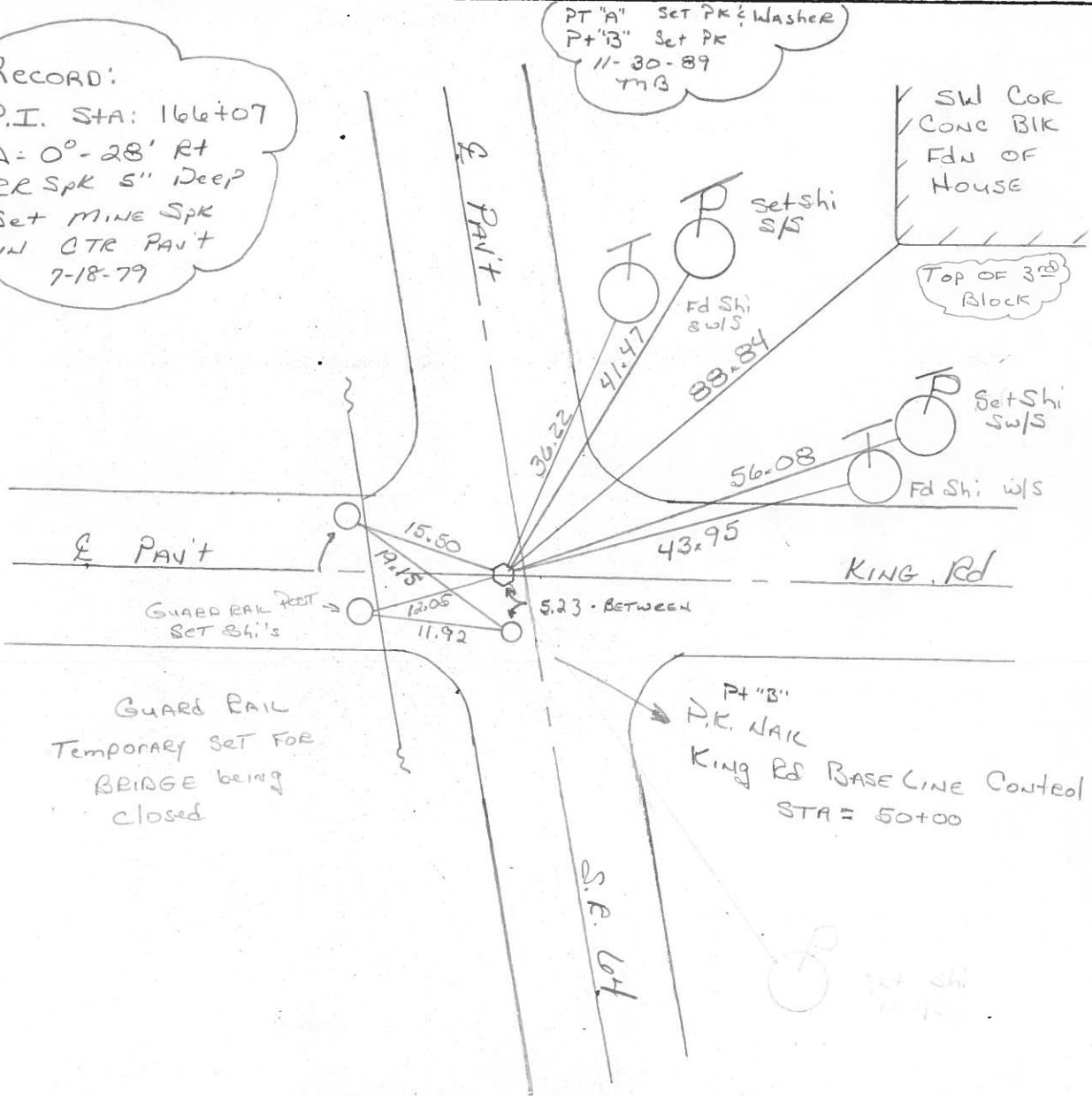
T 6 N R 10 E

TYPE MONUMENT 7" A" Sm RR Spk
 ON SURFACE - BELOW yes
 LEFT - ☉ PAV'T. - RIGHT 1.2
 - TO - EDGE PAVEMENT ON E KING Rd - EAST
 S.L.M. 532+00



RECORD:
 P.I. STA: 166+07
 A = 0° - 28' RT
 RR Spk 5" Deep
 Set MINE Spk
 IN CTR PAV'T
 7-18-79

PT "A" SET PK & WASHER
 PT "B" SET PK
 11-30-89
 MB



PERSONNEL TITLE PERSONNEL TITLE

COUNTY Wood DATE 01-12-57

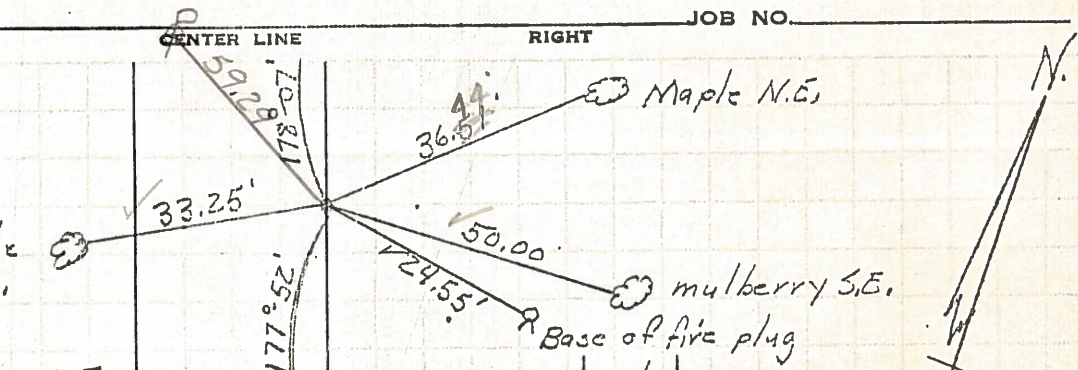
S. R. 64 WEATHER

SEC. TEMP.

DESCRIPTION LEFT CENTER LINE RIGHT JOB NO.

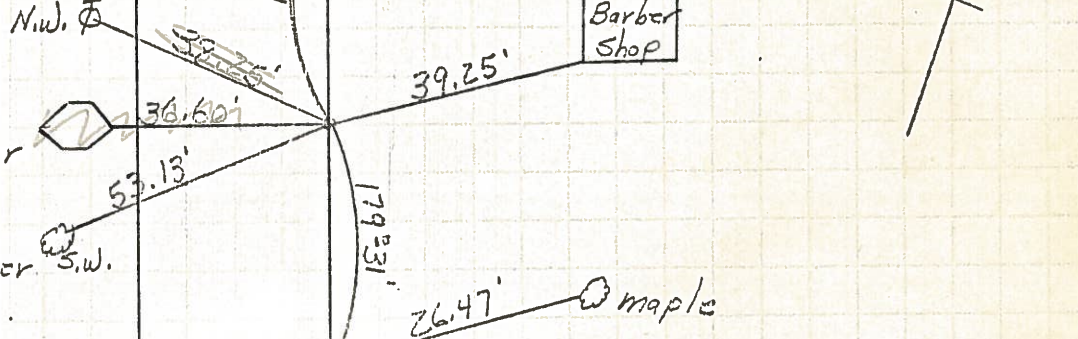
P.I. 39+08.25
R.R. spk showing
Fd. R.R. spk
1-17-66

216-D



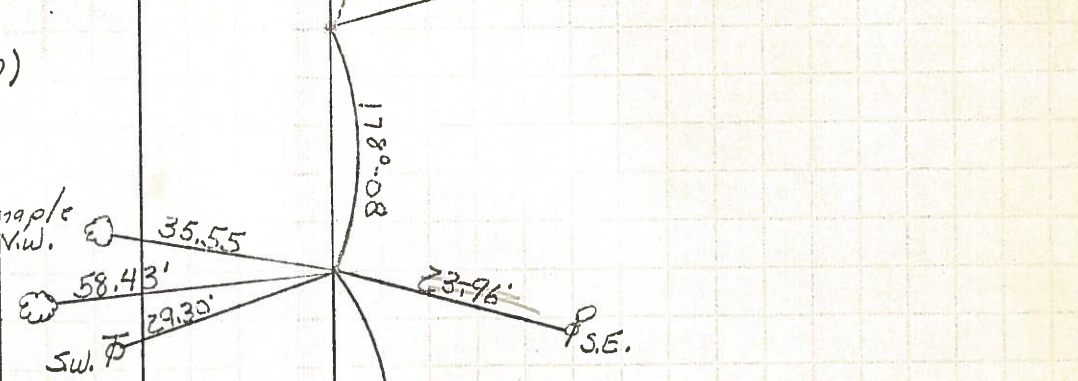
P.I. 35+29.40
Did not find
1-17-66

216-E



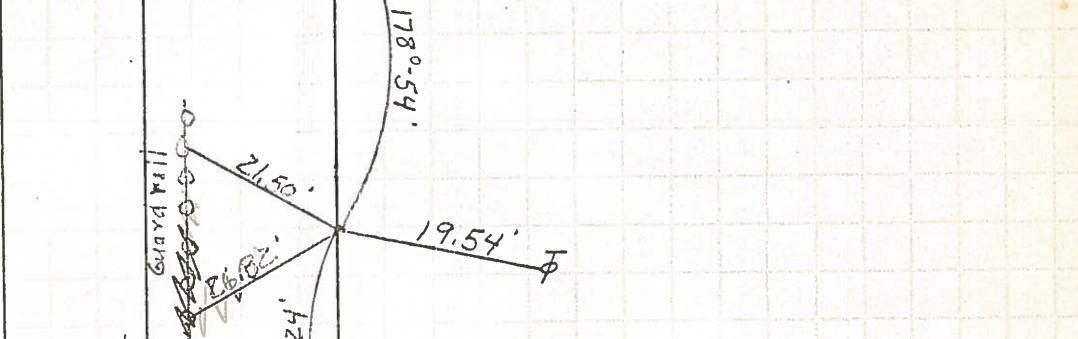
P.I. 31+66.55
(Did not find
Did not find
1-17-66)

218



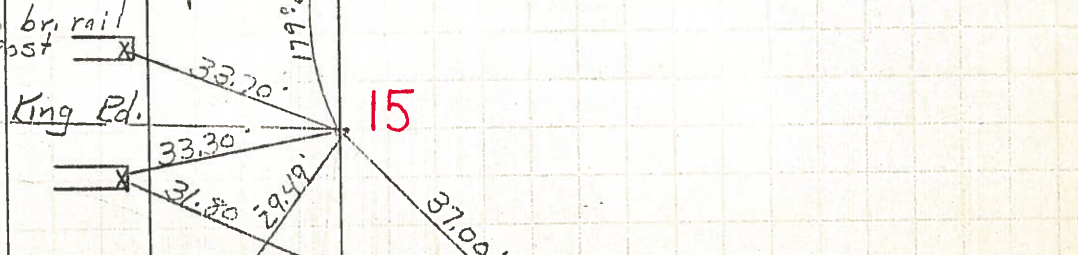
P.I. 24+69.05
Did not find
1-17-66

219



P.I. 14+83.55
Did not find
1-17-66

217



Set P.K's
Ties in Poor Cond.
P.I. 0+00
a.s. = 166 to 7
1-17-66

217A

