

O.D.O.T. DISTRICT 2 SURVEY OFFICE (USE ONLY)

PERSONNEL

REFERENCE NO. 15 A

SHEET 16 OF 22

NOTES RHOADES

DATE 9/17/20

ROUTE SR 64

H.C. AUBLE

WEATHER CLOUDY

COUNTY WOOD

R.C. O'DONNELL

TEMP. 64°

TOWNSHIP MIDDLETON

SECTION 15

DWG BY NIESE PID 93440

T 6 N R 10 E

TYPE MONUMENT MAG NAIL

ON SURFACE - ~~BELOW~~ ON

OFFSET ☉ PAVEMENT ON LT : RT

9.2' TO RT EDGE PAVEMENT

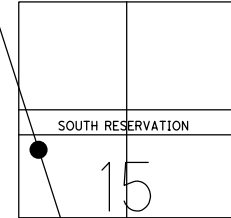
STATION: 541+09.03

HORZ. DATUM: 661617.475

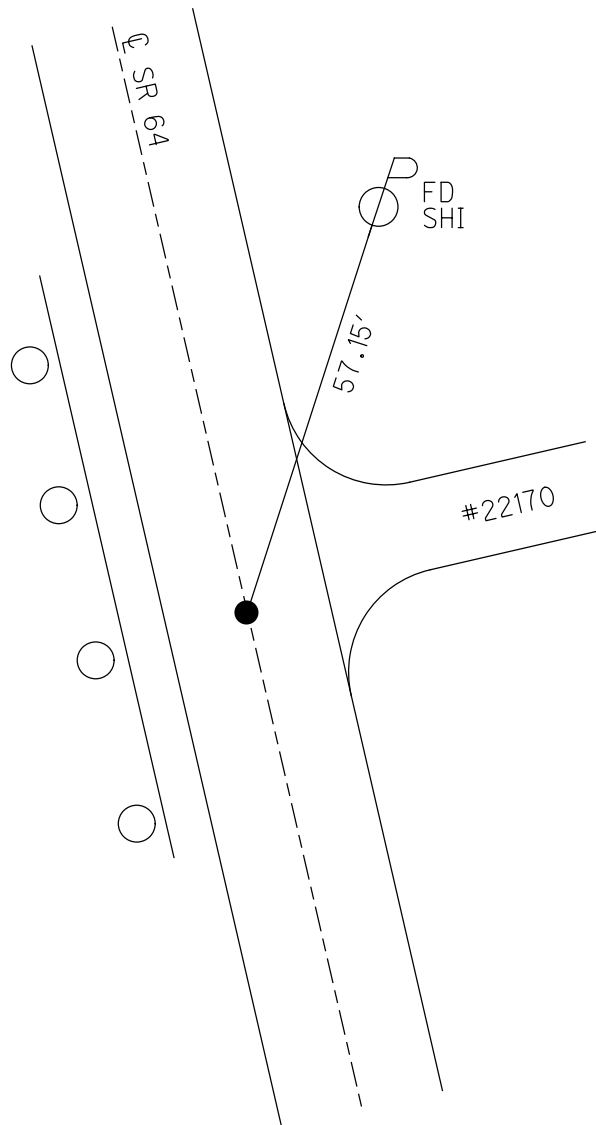
GEOID: 1637161.337

GRID: NORTHING: 661617.475

EASTING: 1637161.337



RECORD: P.I.
 STA. 175+18.6
 FD BOAT SPIKE
 1" DOWN
 SET MINE SPIKE
 7/19/79, BURNSIDE
 SET P.K./WASHER
 11/30/89
 FD MAG NAIL
 4/7/10 SAH
 5/17/11, SAH
 SET MAG/WASHER
 2/22/12, MC
 FD MAG NAIL
 SV17
 9/17/20, JFO

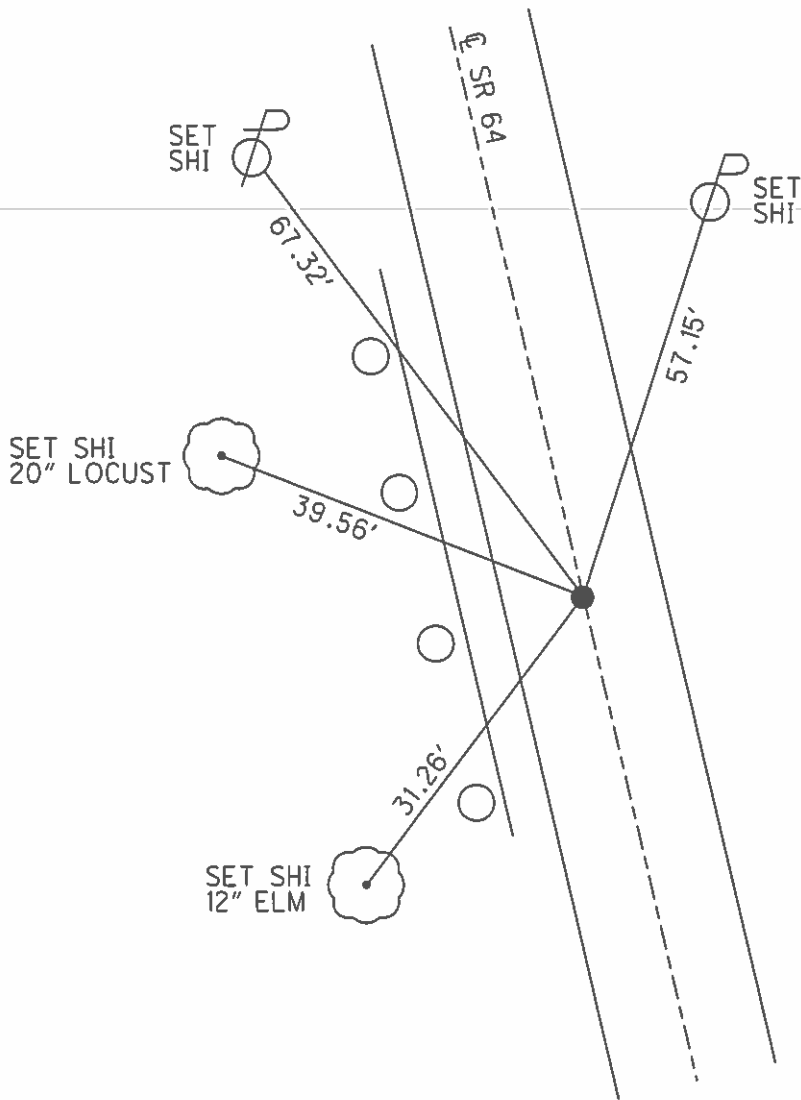
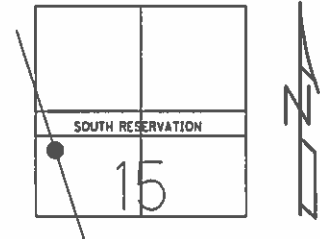


O.D.O.T. DISTRICT 2 SURVEY OFFICE (USE ONLY)

PERSONNEL _____ REFERENCE NO. 15 A SHEET 16 OF 22

NOTES FINGER _____ DATE 5-17-11 ROUTE SR 64
 H.C. HUSS WEATHER CLOUDY COUNTY WOOD
 R.C. CANTERBURY TEMP. 49° TOWNSHIP MIDDLETON
 _____ SECTION 15
 _____ T 6 N R 10 E

TYPE MONUMENT MAG
 ON SURFACE - ~~BELOW~~ ON _____
 LEFT - Q PAV'T - RIGHT ON _____
9.2' TO RT EDGE PAVEMENT
 S.L.M. 541+09.03
 Grid: Northing: 661617.475 Easting: 1637161.337



RECORD: P.I.
 STA. 175+18.6
 FD BOAT SPIKE
 1" DEEP
 SET MINE SPIKE
 7-19-79
 SET PK/WASHER
 11-30-89
 FD MAG NAIL
 GPS, SV17
 4-7-10 SAH
 SET MAG/WASHER
 2/22/12, MC

NOTE:
 NORTH OF
 RESIDENCE #22278

O.D.O.T. DISTRICT 2 SURVEY OFFICE

PERSONNEL

REFERENCE NO. 15-A

SHEET OF

NOTES BARNHISEL

H.C. HOFFMAN

DATE 9-7-89

ROUTE S.R. 64

R.C. Lochake

WEATHER Partly-cloudy

COUNTY WOOD

TEMP. +80°

TOWNSHIP Middleton

SECTION 15

T. 6 N. R. 10 E.

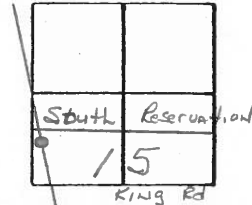
TYPE MONUMENT Sm RR Spk

ON SURFACE - ~~BELOW~~ YES

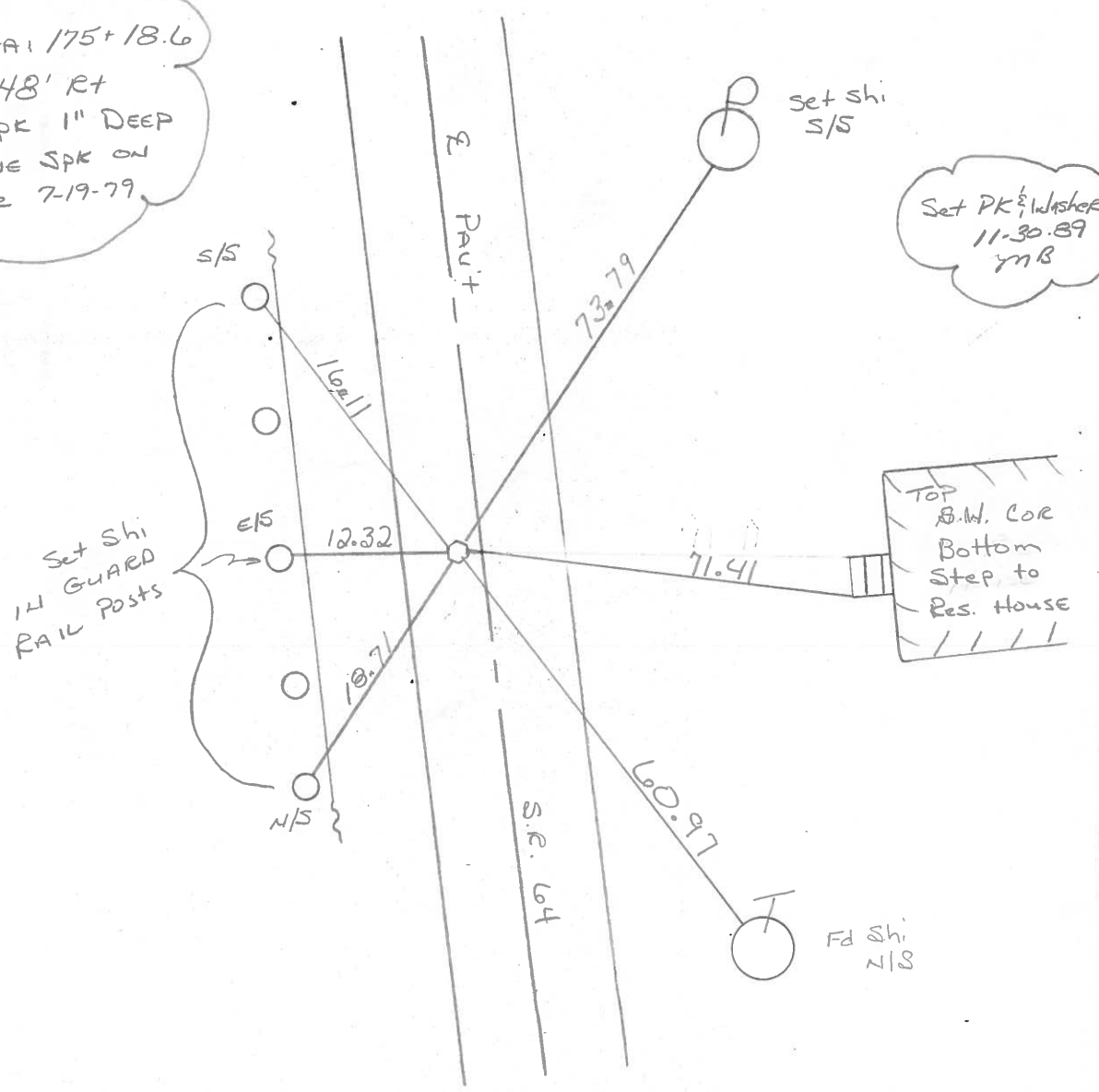
LEFT-~~C~~ PAV'T. - ~~RIGHT~~ 1.7

7.8 TO Lt EDGE PAVEMENT

S.L.M. 541 + 18



RECORD:
 P.I. STA 175+18.6
 $\Delta = 10^\circ 48' \text{ RT}$
 BOAT SPK 1" DEEP
 Set MINE SPK ON SURFACE 7-19-79



Set Shi 14 GUARD RAIL Posts

TOP B.M. COR
 Bottom Step to Res. House

County WOOD S.R. 64

Township MIDDLETON

Section FRACTIONAL SEC. 15

T6N, R10E

Personnel BURNSIDE

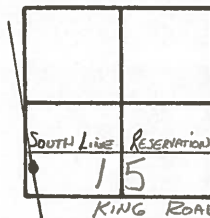
KNAPE

MEAD

Date 7-19-79

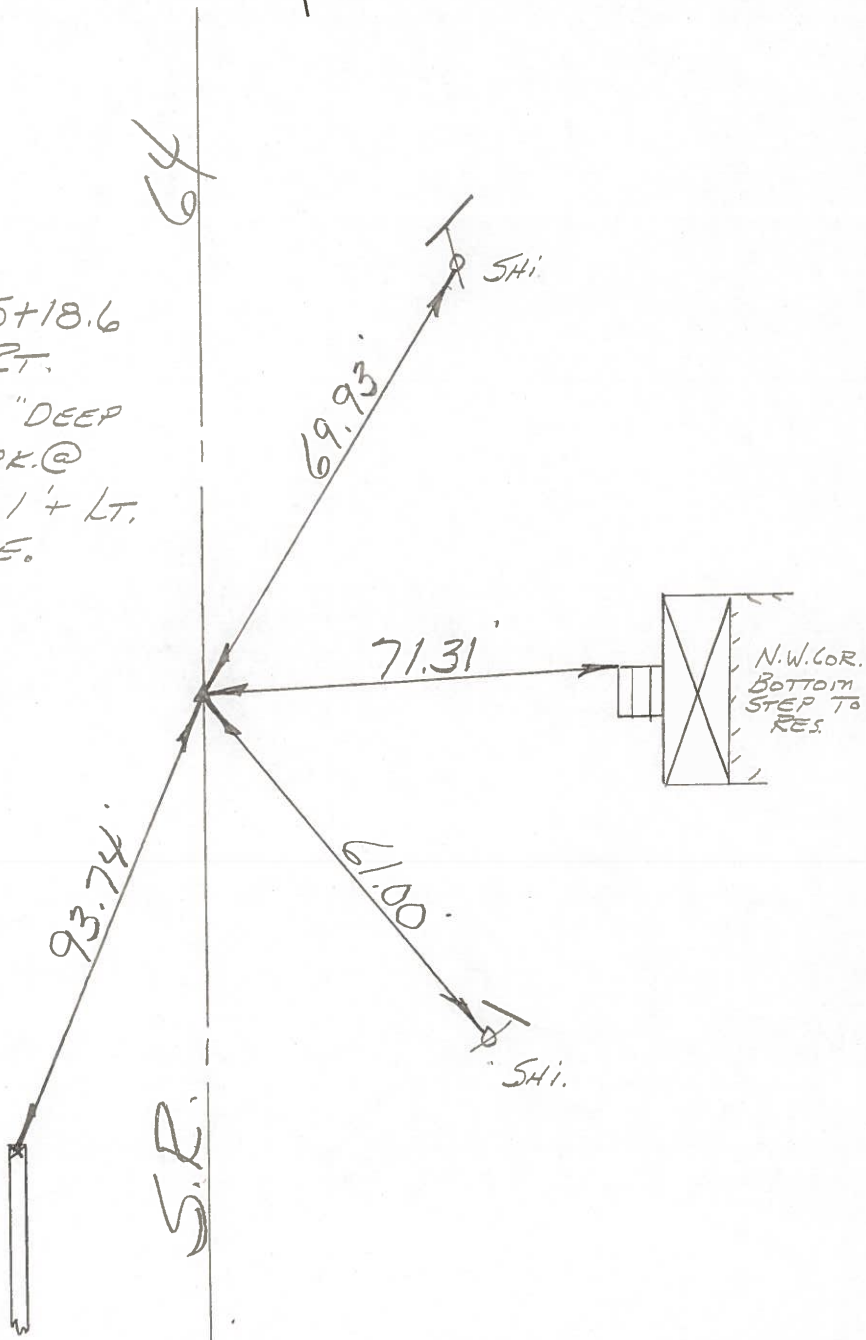
Weather CLEAR

Temp. +68°



15-A

P.I. STA. 175+18.6
 $\Delta = 1^{\circ} 48' RT.$
 BOAT SPK. 1" DEEP
 SET MINE SPK. @
 SURFACE ϵ 1' + LT.
 OF CTR. PAVE.



PERSONNEL	TITLE	PERSONNEL	TITLE
BURNSIDE		Rocchini	
SMITH			
BOWERS			
HOLCOMBE			

COUNTY WOOD DATE 6-15-71
 S. R. 64 WEATHER CLEAR
 SEC. _____ TEMP. +72°

DESCRIPTION _____ LEFT _____ CENTER LINE _____ RIGHT _____ JOB NO. _____

