

7/8031

FEDERAL RD. DIST. NO.	STATE	FEDERAL AID PROJ. NO.	FISCAL YEAR
10	OHIO	387A	1925

1
11

STATE OF OHIO
DEPARTMENT OF HIGHWAYS AND PUBLIC WORKS
DIVISION OF HIGHWAYS
BUREAU OF CONSTRUCTION

OTTAWA GRAND-RAPIDS ROAD
I.C.H. NO. 285 SEC. "G" AND "GRAND RAPIDS" PETITION NO. 5388
WOOD COUNTY

GRAND RAPIDS TOWNSHIP 1925

*Recd
Feb 20/26
Recd 9 Mar 27*

INDEX

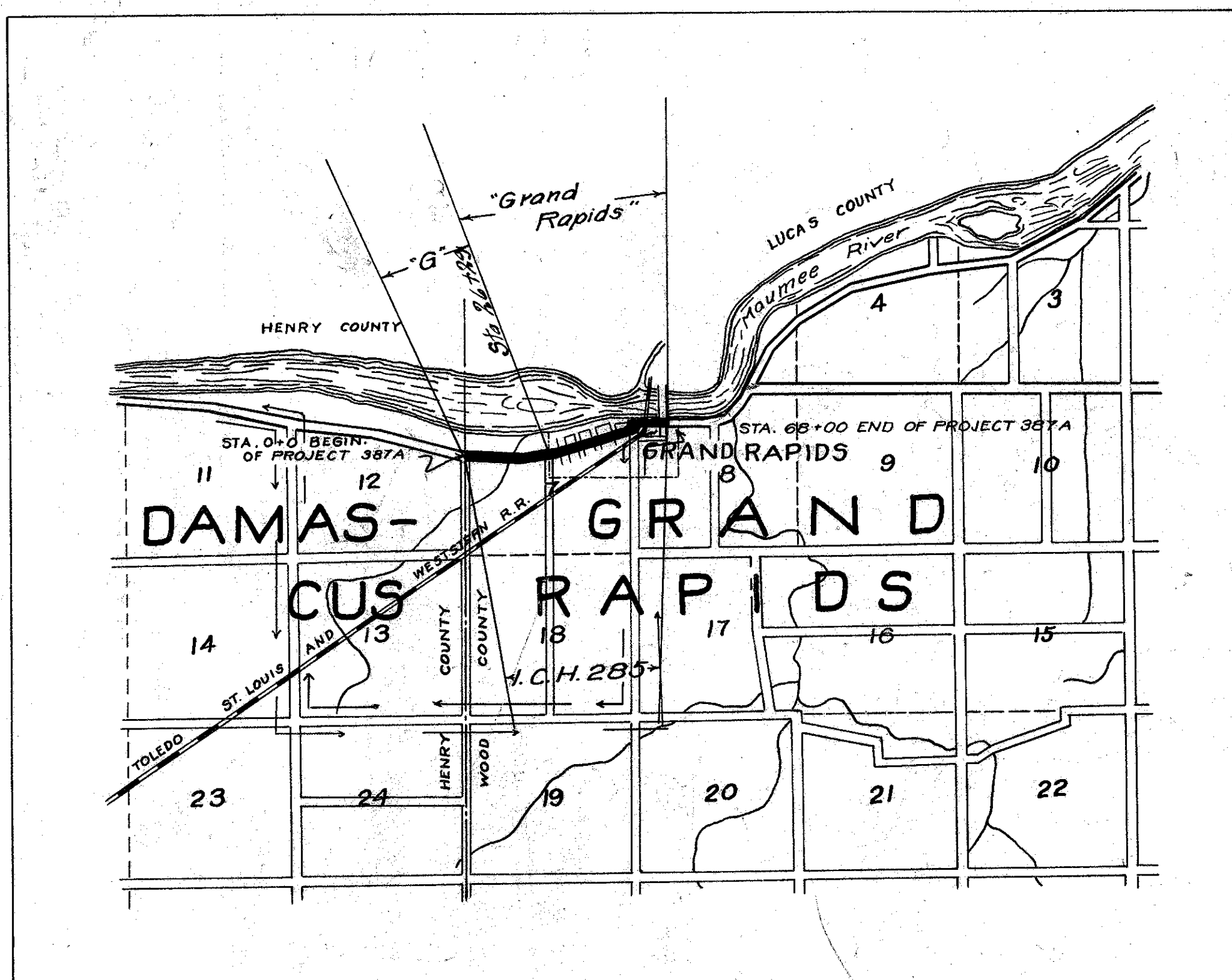
Title Page	p. 1
Typical Cross Section	p. 2
Plans and Profile	p. 3 to 5
Cross Sections	p. 5 to 10
Structural Plans	p. 11
Summary Sheet	p. 11

CONVENTIONAL SIGNS

- State Line _____
- County Line _____
- Township Line _____
- Section Line _____
- Property Line not fenced _____
- Center Line _____
- City or Village Line _____
- Fence _____
- Telephone or Telegraph T T T T T T T T
- Steam Railroad _____
- Electric Line _____

We, the Commissioners of Wood County hereby approve these plans and certify that the right-of-way 60 & 80 ft. wide is available for the construction, maintenance and repair of the above highway.

APPROVED Date February 25th 1926
S. J. Peppers Wood County
D. J. Pitters Commissioners
F. C. Fox



LOCATON PLAN

SCALE OF MILES

PORTION TO BE IMPROVED
DETOURS SHOWN THUS
IMPROVED ROADS

SCALES

Plan 1" = 100'
Profile (Vertical) 1" = 10'
Profile (Horizontal) 1" = 100'
Cross Section 1" = 5'

The standard Specifications of the State of Ohio, Division of Highways, in force on date of contract will govern this improvement.

I hereby approve these plans and declare that the making of this improvement will require the closing to traffic of the highway and that detours will be provided as shown on the plan and estimates

Approved: *W. L. Socher*
Date, 2/24/26 Resident Engineer

Approved: *M. J. H. H. H.*
Date, 2/26/26 Resident Deputy
State Highway Commissioner

Approved: *James J. Cook*
Date, 3-27-26 State Highway Engineer

Approved: *G. F. Schlesinger*
Date, 3-24-26 Director of Highways
and Public Works

Recommended for Approval:
Date, District Engineer
Bureau of Public Roads

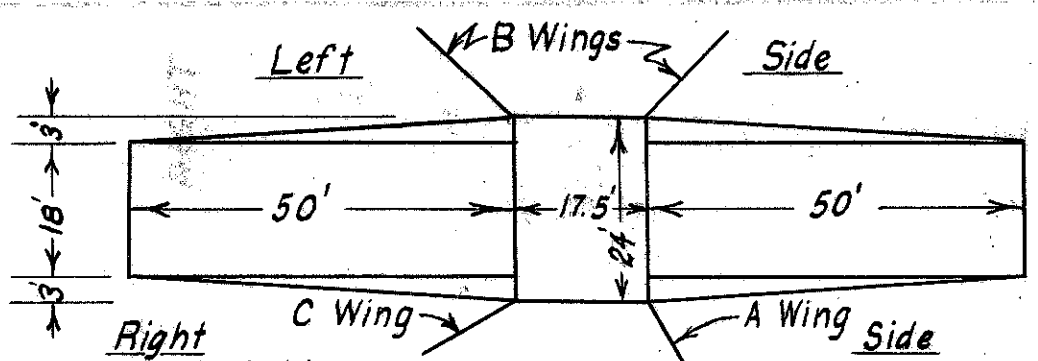
Recommended for Approval:
Date, Chief Engineer
Bureau of Public Roads

Approved: _____
Date, Chief of Bureau

CONSTRUCTION BUREAU
AUG 1 1925
GROUND PHOTOLAB

Wood Co.
I. C. H. 285.
Sec. "G" & Grand-Rapids

LEFT				RIGHT			
EDGE OF PAVE.	WIDTH	STATION	GRADE	WIDTH	EDGE OF PAVE.	STATION	GRADE
656.76	9.0	21+81.47	656.95	9.0	656.76		
657.33	9.68	22+06.17	657.52	9.0	657.61		
657.78	10.95	22+31.47	657.97	9.0	658.35		
658.11	11.87	22+50.00	658.30	9.0	658.96		
658.68	12.60	22+81.47	658.87	9.0	659.81		
659.01	12.35	23+00.00	659.20	9.0	659.97		
659.64	10.95	23+34.80	659.83	9.0	660.21		
660.09	9.68	23+59.80	660.28	9.0	660.37		
660.54	9.00	23+84.84	660.73	9.0	660.54		
42.2 Sq. Yds. Extra Pavement							



Sta. 17+30 :- Remove present slab bridge. Construct Std. Slab Bridge [Drawing 302-1] Span = 15'0". Height = 8'0". Wings as shown. Roadway 24' at Rt. Angle to Center Line. Excavation = 50 Cu. Yds. 1-2" Conc. = 16.8 Cu. Yds. 1-2 1/2" " = 52.8 " 1-3" " = 21.8 " Steel Reinf. = 1805# Lin. ft. Railing = 34 ft.

Deduct 35 Sq. Yds. of Pavement for Bridge. Build Conc. Surface over Bridge 24' wide = 46.6 Sq. Yds. Widen Approaches to Bridge as Indicated. Widening Requires 33.3 Sq. Yds. Elev. of Top of Slab = 647.53. No deduction of top course for type B

LEFT				RIGHT			
EDGE OF PAVE.	WIDTH	STATION	GRADE	WIDTH	EDGE OF PAVE.	STATION	GRADE
663.15	9.0	8+52.12	663.24	9.0	663.15		
662.98	9.0	8+77.12	663.17	9.0	663.14		
662.80	9.0	9+02.12	662.99	9.0	663.12		
662.63	9.0	9+27.12	662.82	9.0	663.11		
662.45	9.0	9+52.12	662.64	9.0	663.10		
662.28	9.0	9+77.12	662.47	9.0	662.93		
662.11	9.0	10+0	662.30	9.0	662.76		
661.91	9.0	10+25	662.10	9.0	662.50		
661.66	9.0	10+50	661.85	9.0	662.31		
661.35	9.0	10+75	661.54	9.0	662.00		
660.99	9.0	11+0	661.18	9.0	661.64		
660.58	9.0	11+25	660.77	9.0	661.23		
660.11	9.0	11+50	660.30	9.0	660.76		
659.59	9.0	11+75	659.78	9.0	660.24		
659.01	9.0	12+0	659.20	9.0	659.66		
658.46	9.0	12+14.7	658.85	9.0	659.31		
658.06	9.0	12+39.7	658.25	9.0	658.54		
657+0	9.0	12+64.7	657.65	9.0	657.78		
656.86	9.0	12+89.7	657.05	9.0	657.02		
656.20	9.0	13+14.7	656.45	9.0	656.26		
No Extra Pavement.							

Sta. 0+00 Beginning of Improvement. F.A. Proj. 387-A

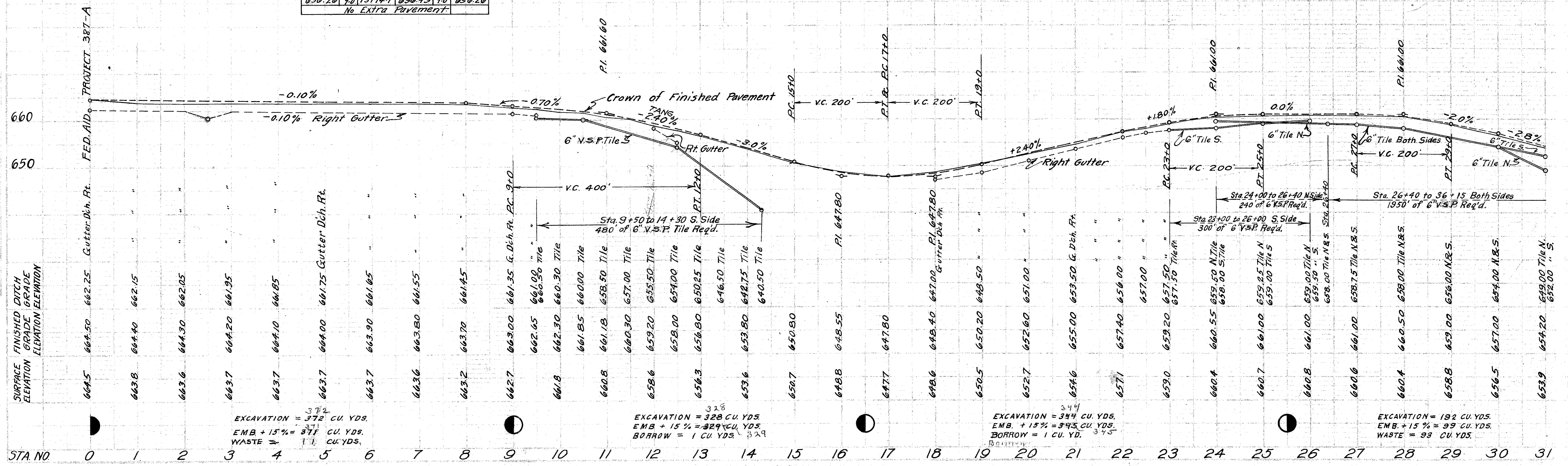
B.M. Sta. 0+00 Nail in telephone pole N. El. = 664.33

Sta. 9+50:- Build Std. Type No. 2 C.B.

B.M. Sta. 11+18 Nail in cherry tree S. El. = 662.83

B.M. Sta. 17+50 Nail in telephone pole N. El. = 645.43

B.M. Sta. 23+00 Top of foundation S.W. cor. barn N. El. = 659.19



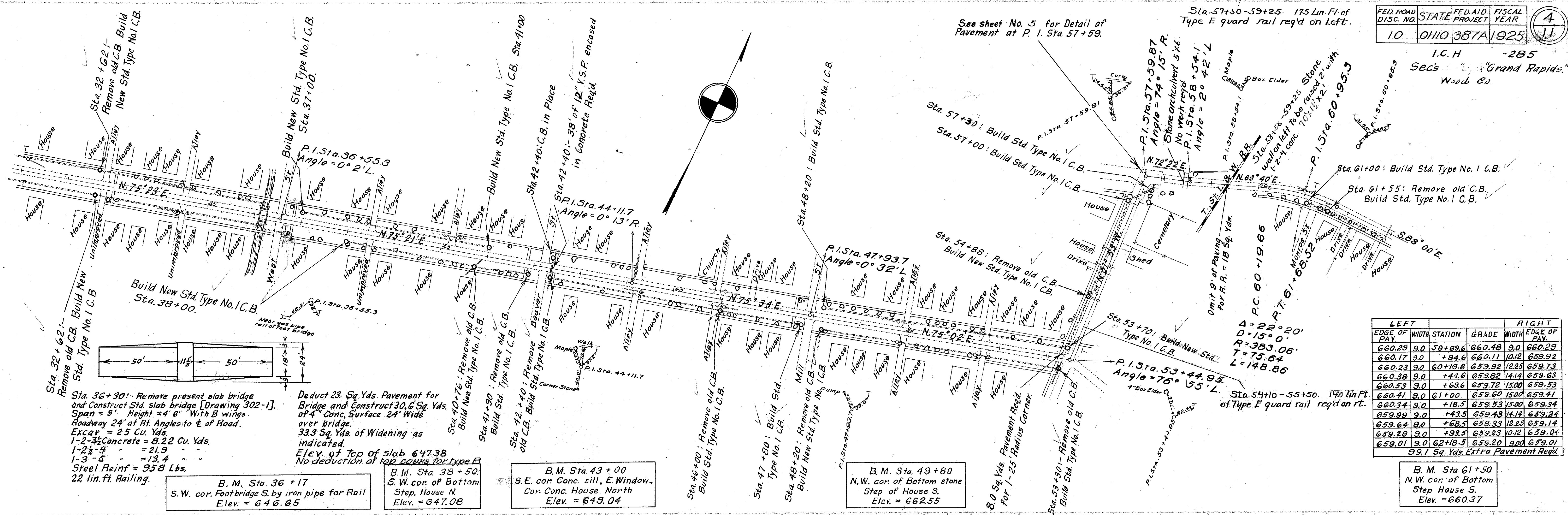
EXCAVATION = 372 CU. YDS.
EMB + 15% = 371 CU. YDS.
WASTE = 17 CU. YDS.

EXCAVATION = 328 CU. YDS.
EMB + 15% = 329 CU. YDS.
BORROW = 1 CU. YDS.

EXCAVATION = 344 CU. YDS.
EMB + 15% = 345 CU. YDS.
BORROW = 1 CU. YD.

EXCAVATION = 182 CU. YDS.
EMB + 15% = 99 CU. YDS.
WASTE = 93 CU. YDS.

I.C.H. -285
Sec's "Grand Rapids"
Wood Co



Sta. 36+30: Remove present slab bridge and Construct Std. slab bridge [Drawing 302-1]. Span = 9'. Height = 4' 6" With B wings. Roadway 24' at Rt. Angles to E of Road. Excav = 25 Cu. Yds. 1-2 1/2 Concrete = 8.22 Cu. Yds. 1-2 1/2 " = 21.9 " 1-3 " = 13.4 " Steel Reinf = 958 Lbs. 22 lin. ft. Railing.

Deduct 23 Sq. Yds. Pavement for Bridge and Construct 30.6 Sq. Yds. of 4" Conc. Surface 24' Wide over bridge. 33.3 Sq. Yds. of Widening as indicated. Elev. of top of slab 647.38 No deduction of top curbs for Type B.

B. M. Sta. 36 + 17
S. W. cor. Footbridge S. by iron pipe for Rail
Elev. = 646.65

B. M. Sta. 38 + 50
S. W. cor. of Bottom Step, House N.
Elev. = 647.08

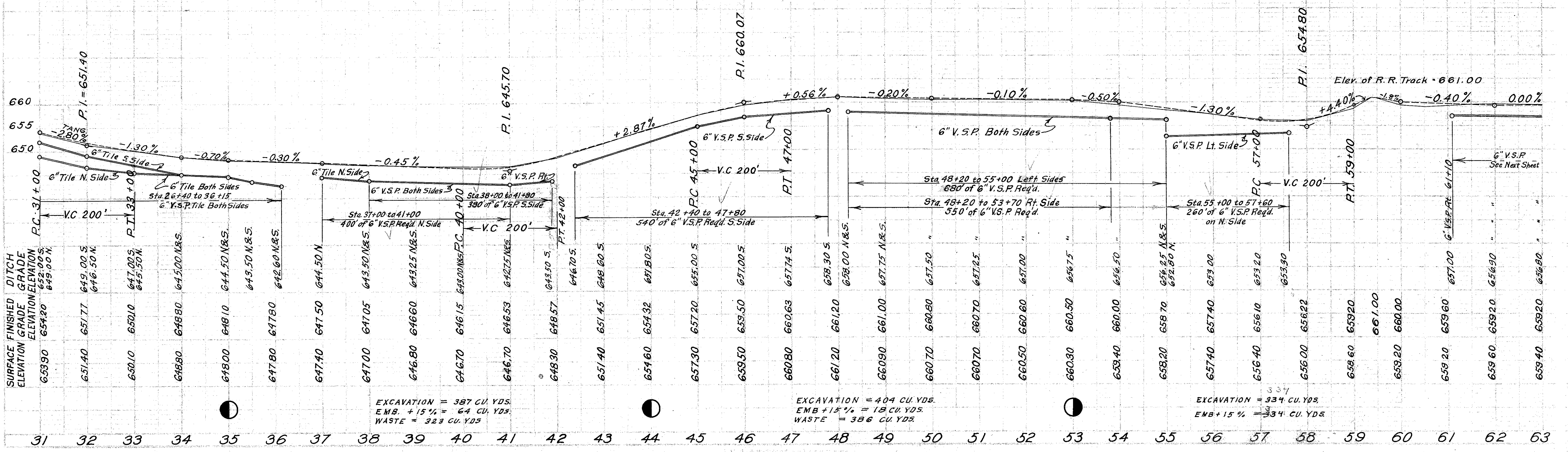
B. M. Sta. 43 + 00
S. E. cor. Conc. sill, E. Window, Cor. Conc. House North
Elev. = 649.04

B. M. Sta. 49 + 80
N. W. cor. of Bottom stone Step of House S.
Elev. = 662.55

B. M. Sta. 61 + 50
N. W. cor. of Bottom Step House S.
Elev. = 660.37

LEFT EDGE OF PAV.	WIDTH	STATION	GRADE	WIDTH	RIGHT EDGE OF PAV.
660.29	9.0	59+69.6	660.48	9.0	660.29
660.17	9.0	+94.6	660.11	10.12	659.92
660.23	9.0	60+19.6	659.92	12.25	659.73
660.38	9.0	+44.6	659.62	14.14	659.63
660.53	9.0	+69.6	659.72	15.00	659.53
660.41	9.0	61+00	659.60	15.00	659.41
660.34	9.0	+18.5	659.53	15.00	659.34
659.99	9.0	+43.5	659.43	14.14	659.24
659.64	9.0	+68.5	659.33	12.25	659.14
659.29	9.0	+93.5	659.23	10.12	659.04
659.01	9.0	62+18.5	659.20	9.00	659.01

99.1 Sq. Yds. Extra Pavement Req'd.



EXCAVATION = 387 CU. YDS.
EMB. + 15% = 64 CU. YDS.
WASTE = 323 CU. YDS.

EXCAVATION = 404 CU. YDS.
EMB. + 15% = 18 CU. YDS.
WASTE = 386 CU. YDS.

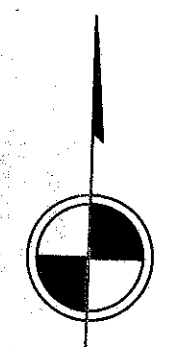
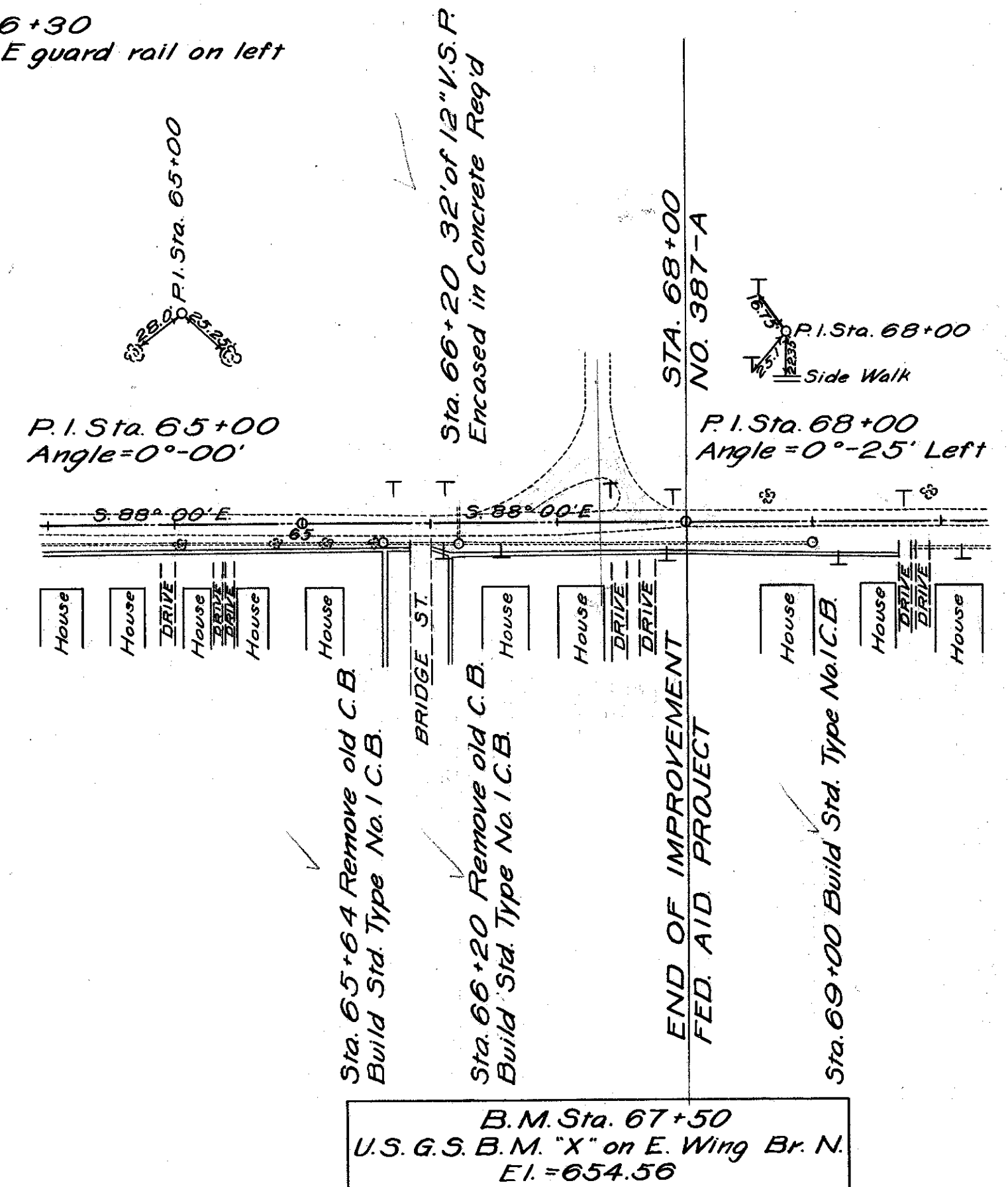
EXCAVATION = 334 CU. YDS.
EMB. + 15% = 334 CU. YDS.

FED. ROAD DIST. NO.	STATE	FED. AID PROJECT	FISCAL YEAR
10	OHIO	387A	1925

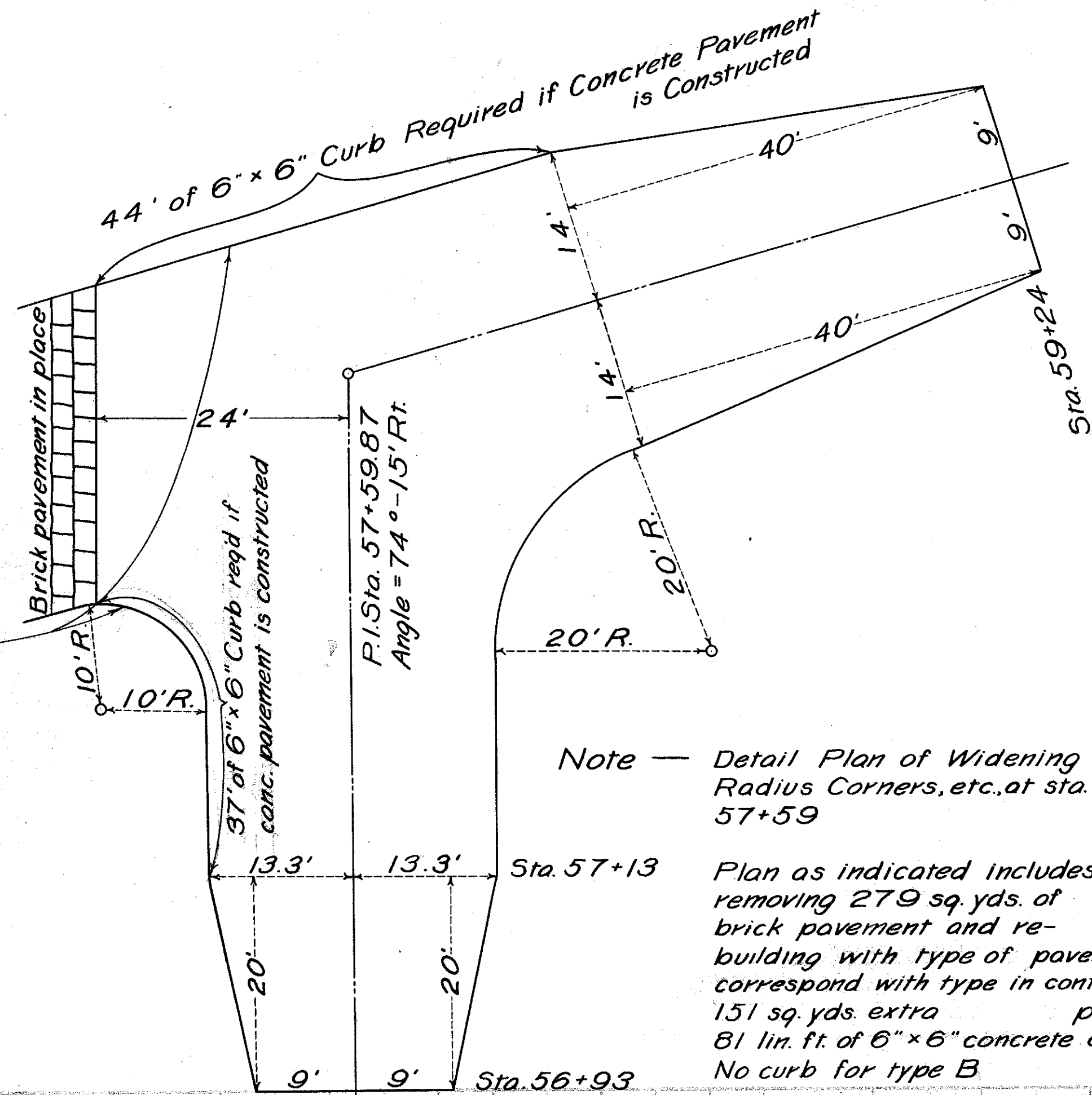
I.C.H. 285
 Sec. 9 Grand Rapids
 Wood Co



Sta. 60+00-66+30
 630 lin. ft. type E guard rail on left

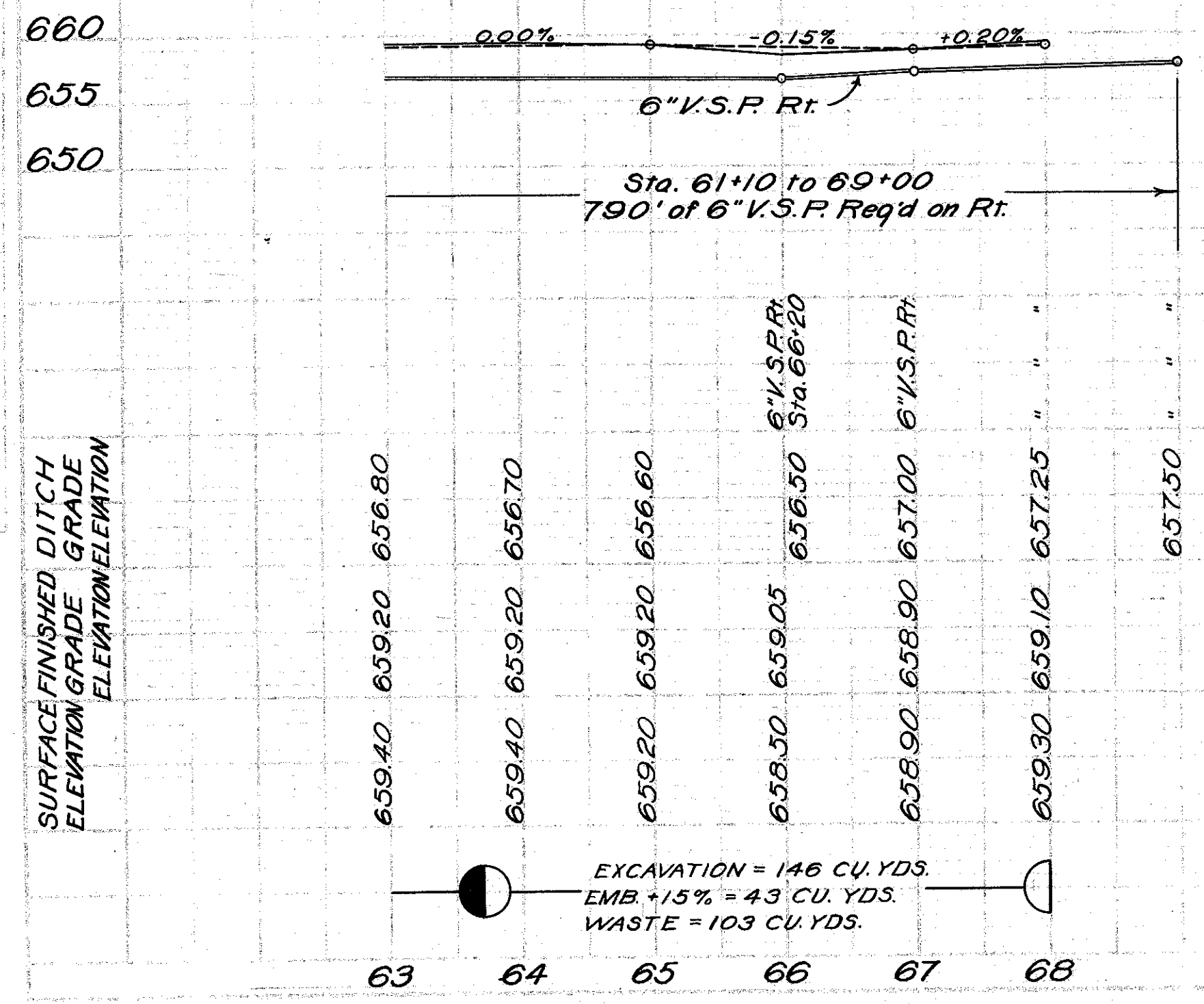


In case a Bit. Mac. Pavement is constructed the present stone curb is to remain in place



Note — Detail Plan of Widening Radius Corners, etc., at sta. 57+59

Plan as indicated includes removing 279 sq. yds. of brick pavement and re-building with type of pavement to correspond with type in contract. 151 sq. yds. extra pavement 81 lin. ft. of 6\"/>



Note — Pavement to end at sta. 68+00. Drainage structures to end at sta. 69+00.

EXCAVATION = 146 CU. YDS.
 EMB. +15% = 43 CU. YDS.
 WASTE = 103 CU. YDS.