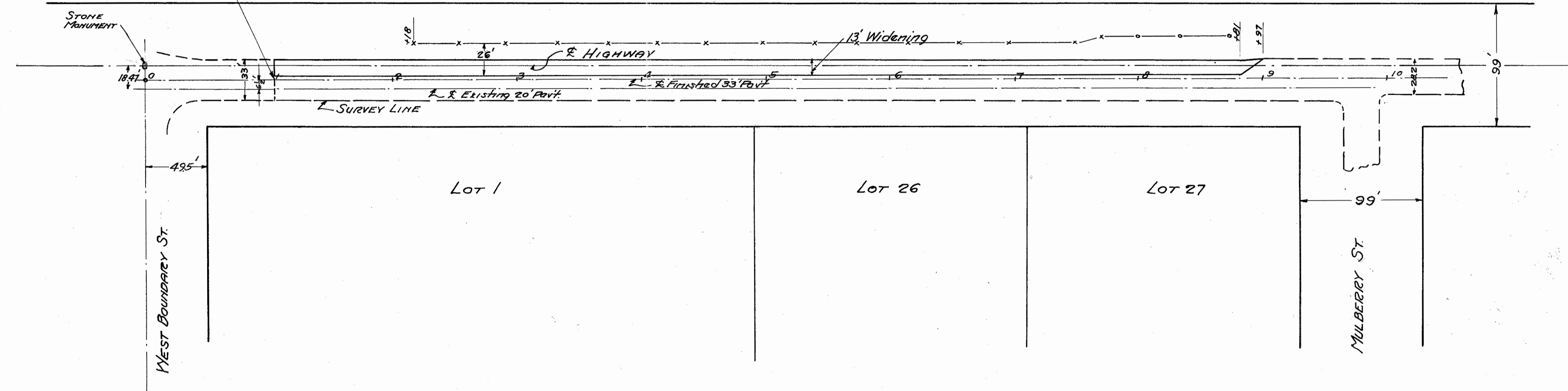


SR-65

TOLEDO-GRAND RAPIDS
S.H. 53 SEC. PERRYSBURG (PART)
WOOD COUNTY

Scanned
July 1997

END OF MAUMEE-PERRYSBURG BRIDGE PAVING PROJ.



NOTE:- R/W shown is a copy of the Plat of Town of Perrysburg which appears on Pages 138, 139 of Vol. V Records Surveys of U.S. Lands. Survey notes for which, are in records of field notes Vol. XVIII Pages 291-311, State Auditors Office.

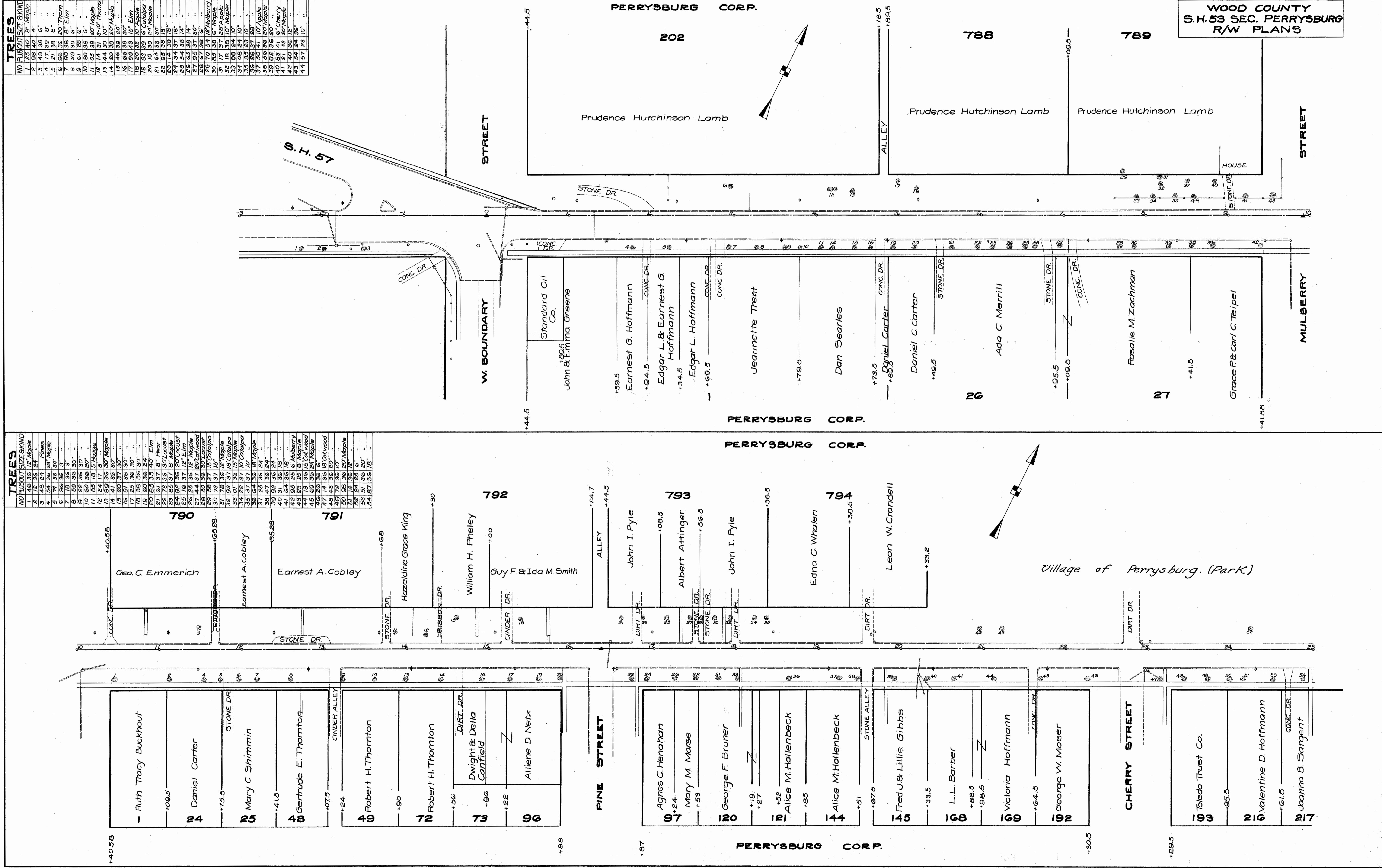
R-5065 #4 D-6

Scanned
July 1997

| TREES | NO | PLANT | SIZE | BY KIND |
|-------|-----|-------|------|---------|
| 1 | 25 | 140 | 5' | Maple |
| 2 | 26 | 140 | 4' | " |
| 3 | 27 | 140 | 4' | " |
| 4 | 28 | 140 | 4' | " |
| 5 | 29 | 140 | 4' | " |
| 6 | 30 | 140 | 4' | " |
| 7 | 31 | 140 | 4' | " |
| 8 | 32 | 140 | 4' | " |
| 9 | 33 | 140 | 4' | " |
| 10 | 34 | 140 | 4' | " |
| 11 | 35 | 140 | 4' | " |
| 12 | 36 | 140 | 4' | " |
| 13 | 37 | 140 | 4' | " |
| 14 | 38 | 140 | 4' | " |
| 15 | 39 | 140 | 4' | " |
| 16 | 40 | 140 | 4' | " |
| 17 | 41 | 140 | 4' | " |
| 18 | 42 | 140 | 4' | " |
| 19 | 43 | 140 | 4' | " |
| 20 | 44 | 140 | 4' | " |
| 21 | 45 | 140 | 4' | " |
| 22 | 46 | 140 | 4' | " |
| 23 | 47 | 140 | 4' | " |
| 24 | 48 | 140 | 4' | " |
| 25 | 49 | 140 | 4' | " |
| 26 | 50 | 140 | 4' | " |
| 27 | 51 | 140 | 4' | " |
| 28 | 52 | 140 | 4' | " |
| 29 | 53 | 140 | 4' | " |
| 30 | 54 | 140 | 4' | " |
| 31 | 55 | 140 | 4' | " |
| 32 | 56 | 140 | 4' | " |
| 33 | 57 | 140 | 4' | " |
| 34 | 58 | 140 | 4' | " |
| 35 | 59 | 140 | 4' | " |
| 36 | 60 | 140 | 4' | " |
| 37 | 61 | 140 | 4' | " |
| 38 | 62 | 140 | 4' | " |
| 39 | 63 | 140 | 4' | " |
| 40 | 64 | 140 | 4' | " |
| 41 | 65 | 140 | 4' | " |
| 42 | 66 | 140 | 4' | " |
| 43 | 67 | 140 | 4' | " |
| 44 | 68 | 140 | 4' | " |
| 45 | 69 | 140 | 4' | " |
| 46 | 70 | 140 | 4' | " |
| 47 | 71 | 140 | 4' | " |
| 48 | 72 | 140 | 4' | " |
| 49 | 73 | 140 | 4' | " |
| 50 | 74 | 140 | 4' | " |
| 51 | 75 | 140 | 4' | " |
| 52 | 76 | 140 | 4' | " |
| 53 | 77 | 140 | 4' | " |
| 54 | 78 | 140 | 4' | " |
| 55 | 79 | 140 | 4' | " |
| 56 | 80 | 140 | 4' | " |
| 57 | 81 | 140 | 4' | " |
| 58 | 82 | 140 | 4' | " |
| 59 | 83 | 140 | 4' | " |
| 60 | 84 | 140 | 4' | " |
| 61 | 85 | 140 | 4' | " |
| 62 | 86 | 140 | 4' | " |
| 63 | 87 | 140 | 4' | " |
| 64 | 88 | 140 | 4' | " |
| 65 | 89 | 140 | 4' | " |
| 66 | 90 | 140 | 4' | " |
| 67 | 91 | 140 | 4' | " |
| 68 | 92 | 140 | 4' | " |
| 69 | 93 | 140 | 4' | " |
| 70 | 94 | 140 | 4' | " |
| 71 | 95 | 140 | 4' | " |
| 72 | 96 | 140 | 4' | " |
| 73 | 97 | 140 | 4' | " |
| 74 | 98 | 140 | 4' | " |
| 75 | 99 | 140 | 4' | " |
| 76 | 100 | 140 | 4' | " |

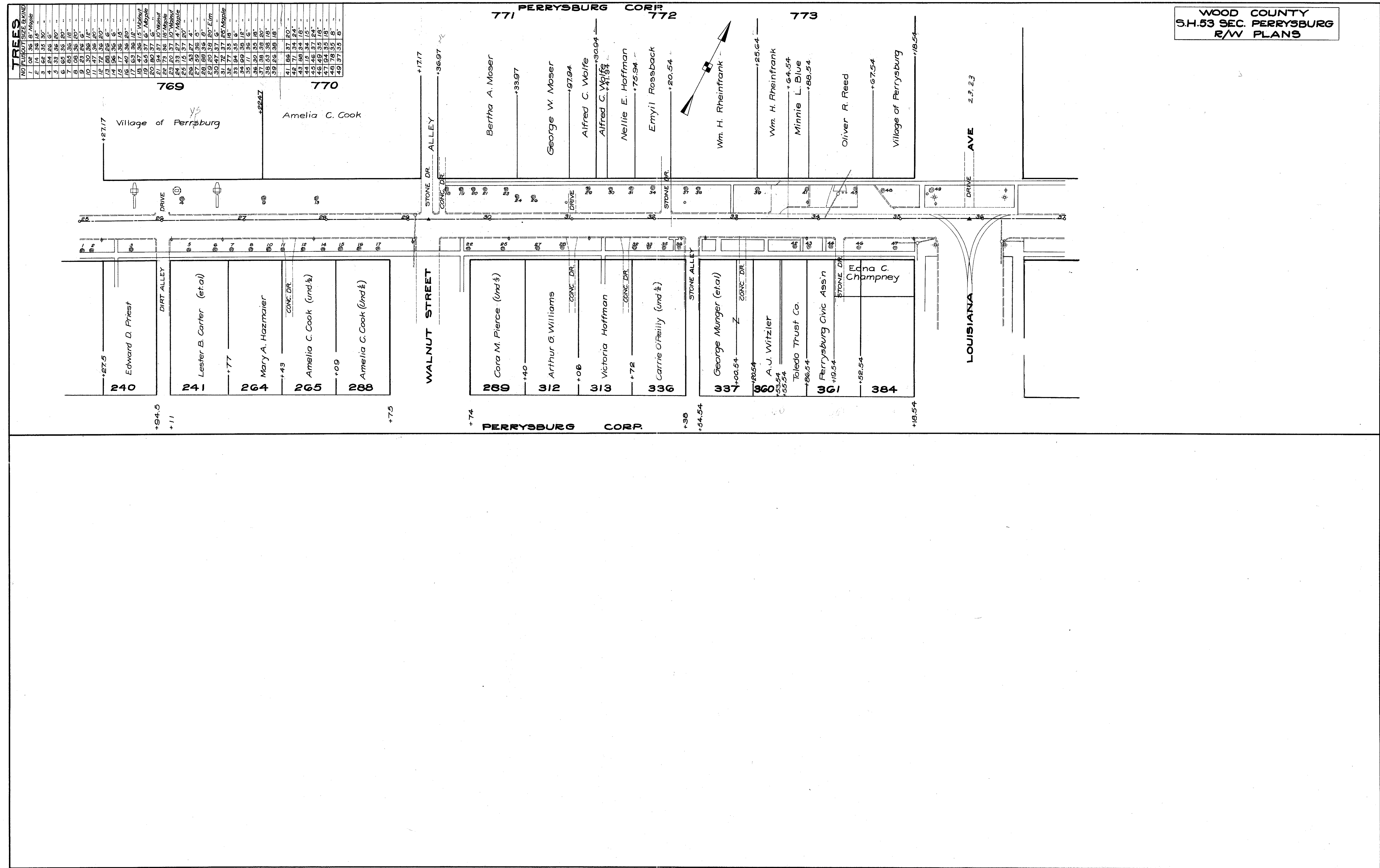
| TREES | NO | PLANT | SIZE | BY KIND |
|-------|-----|-------|------|---------|
| 1 | 46 | 36 | 12' | Maple |
| 2 | 47 | 36 | 12' | " |
| 3 | 48 | 36 | 12' | " |
| 4 | 49 | 36 | 12' | " |
| 5 | 50 | 36 | 12' | " |
| 6 | 51 | 36 | 12' | " |
| 7 | 52 | 36 | 12' | " |
| 8 | 53 | 36 | 12' | " |
| 9 | 54 | 36 | 12' | " |
| 10 | 55 | 36 | 12' | " |
| 11 | 56 | 36 | 12' | " |
| 12 | 57 | 36 | 12' | " |
| 13 | 58 | 36 | 12' | " |
| 14 | 59 | 36 | 12' | " |
| 15 | 60 | 36 | 12' | " |
| 16 | 61 | 36 | 12' | " |
| 17 | 62 | 36 | 12' | " |
| 18 | 63 | 36 | 12' | " |
| 19 | 64 | 36 | 12' | " |
| 20 | 65 | 36 | 12' | " |
| 21 | 66 | 36 | 12' | " |
| 22 | 67 | 36 | 12' | " |
| 23 | 68 | 36 | 12' | " |
| 24 | 69 | 36 | 12' | " |
| 25 | 70 | 36 | 12' | " |
| 26 | 71 | 36 | 12' | " |
| 27 | 72 | 36 | 12' | " |
| 28 | 73 | 36 | 12' | " |
| 29 | 74 | 36 | 12' | " |
| 30 | 75 | 36 | 12' | " |
| 31 | 76 | 36 | 12' | " |
| 32 | 77 | 36 | 12' | " |
| 33 | 78 | 36 | 12' | " |
| 34 | 79 | 36 | 12' | " |
| 35 | 80 | 36 | 12' | " |
| 36 | 81 | 36 | 12' | " |
| 37 | 82 | 36 | 12' | " |
| 38 | 83 | 36 | 12' | " |
| 39 | 84 | 36 | 12' | " |
| 40 | 85 | 36 | 12' | " |
| 41 | 86 | 36 | 12' | " |
| 42 | 87 | 36 | 12' | " |
| 43 | 88 | 36 | 12' | " |
| 44 | 89 | 36 | 12' | " |
| 45 | 90 | 36 | 12' | " |
| 46 | 91 | 36 | 12' | " |
| 47 | 92 | 36 | 12' | " |
| 48 | 93 | 36 | 12' | " |
| 49 | 94 | 36 | 12' | " |
| 50 | 95 | 36 | 12' | " |
| 51 | 96 | 36 | 12' | " |
| 52 | 97 | 36 | 12' | " |
| 53 | 98 | 36 | 12' | " |
| 54 | 99 | 36 | 12' | " |
| 55 | 100 | 36 | 12' | " |

WOOD COUNTY
S.H. 53 SEC. PERRYSBURG
R/W PLANS



FOR ANY QUESTIONS PLEASE CONTACT ODOT DISTRICT 2 REAL ESTATE AT 419-353-8131

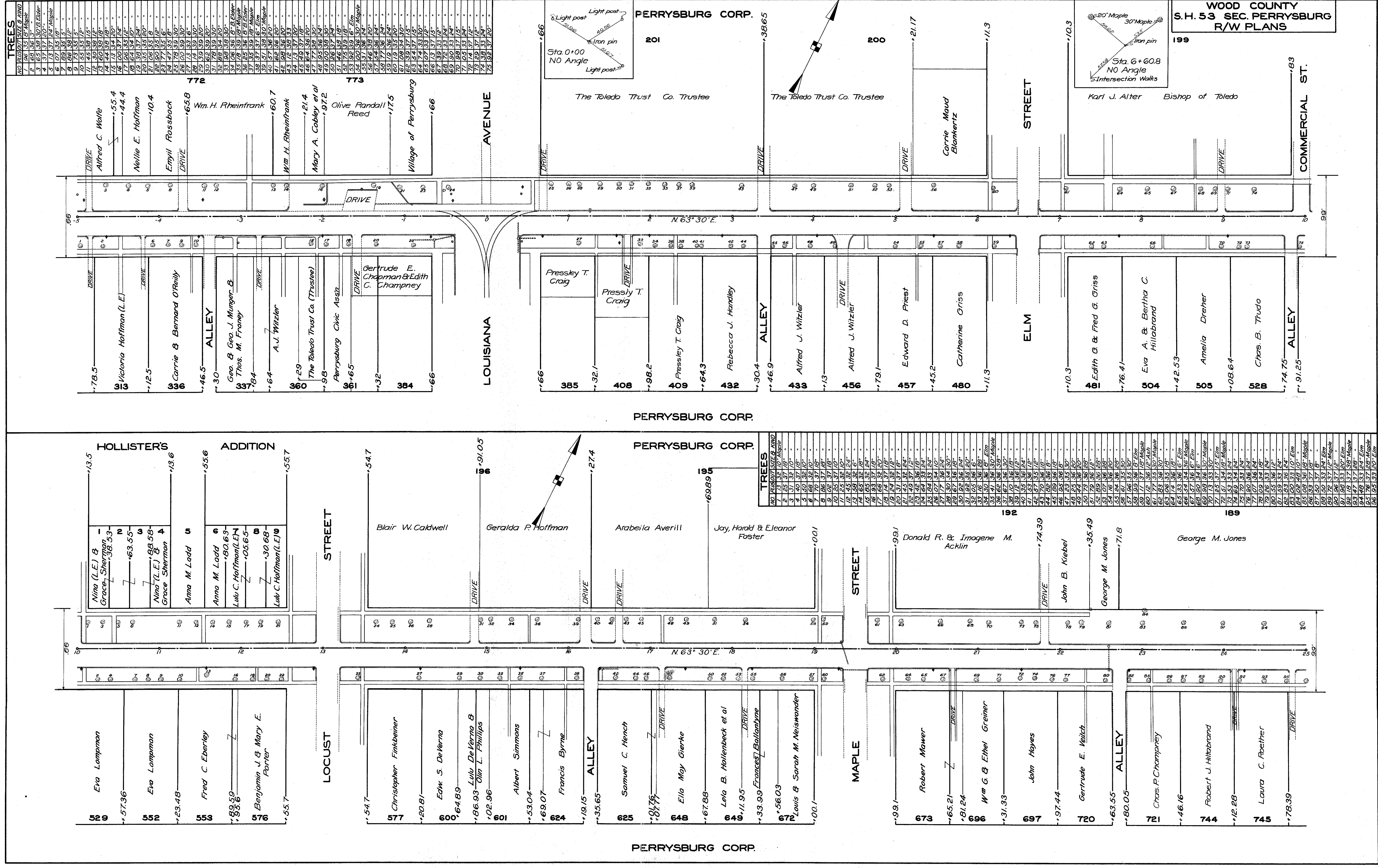
SCANNED
JULY 1997



WOOD COUNTY
S.H. 53 SEC. PERRYSBURG
R/W PLANS

FOR ANY QUESTIONS PLEASE CONTACT ODOT DISTRICT 2 REAL ESTATE AT 419-353-8131

Scanned
July 2017



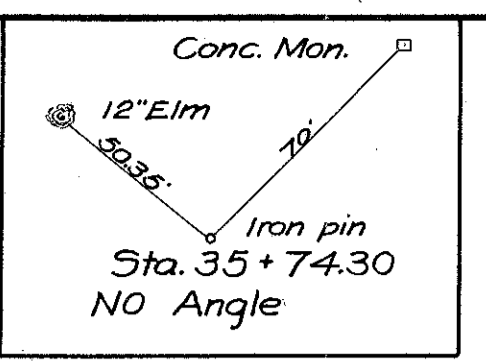
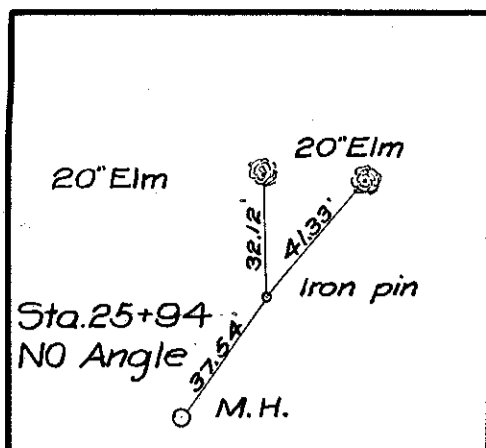
TREES

| NO. | PLANT OUT | SIZE & KIND | R/W |
|-----|-----------|---------------|-----|
| 1 | 56 | 3.5 12" Maple | 3" |
| 2 | 68 | 3.6 3" | 3" |
| 3 | 65 | 3.9 30" Elm | 3" |
| 4 | 71 | 3.7 24" Maple | 3" |
| 5 | 73 | 3.5 5" | 3" |
| 6 | 67 | 3.5 18" | 3" |
| 7 | 89 | 3.5 5" | 3" |
| 8 | 66 | 3.8 18" | 3" |
| 9 | 73 | 3.5 5" | 3" |
| 10 | 53 | 3.3 12" | 3" |
| 11 | 30 | 3.8 12" | 3" |
| 12 | 60 | 3.8 18" | 3" |
| 13 | 13 | 3.4 20" | 3" |
| 14 | 44 | 3.8 18" | 3" |
| 15 | 13 | 3.4 20" | 3" |
| 16 | 20 | 3.7 24" | 3" |
| 17 | 13 | 3.4 20" | 3" |
| 18 | 33 | 3.4 20" | 3" |
| 19 | 38 | 3.7 24" | 3" |
| 20 | 35 | 3.5 20" | 3" |
| 21 | 26 | 3.5 6" | 3" |
| 22 | 50 | 3.5 12" | 3" |
| 23 | 77 | 3.5 6" | 3" |
| 24 | 78 | 3.9 30" | 3" |
| 25 | 20 | 3.9 30" | 3" |
| 26 | 20 | 3.9 30" | 3" |
| 27 | 13 | 3.3 6" | 3" |
| 28 | 14 | 3.9 30" | 3" |
| 29 | 59 | 3.9 20" | 3" |
| 30 | 62 | 3.9 20" | 3" |
| 31 | 28 | 3.9 30" | 3" |
| 32 | 29 | 3.9 30" | 3" |
| 33 | 29 | 3.9 30" | 3" |
| 34 | 26 | 3.6 18" | 3" |
| 35 | 18 | 3.9 18" | 3" |
| 36 | 18 | 3.9 18" | 3" |
| 37 | 55 | 3.6 18" | 3" |
| 38 | 55 | 3.6 18" | 3" |
| 39 | 57 | 3.6 18" | 3" |
| 40 | 57 | 3.6 18" | 3" |
| 41 | 62 | 3.6 20" | 3" |
| 42 | 59 | 3.6 20" | 3" |
| 43 | 12 | 3.6 33" | 3" |
| 44 | 13 | 3.7 20" | 3" |
| 45 | 24 | 3.6 30" | 3" |
| 46 | 24 | 3.6 30" | 3" |
| 47 | 24 | 3.6 30" | 3" |
| 48 | 24 | 3.6 30" | 3" |
| 49 | 20 | 3.6 30" | 3" |
| 50 | 20 | 3.6 30" | 3" |
| 51 | 46 | 3.6 30" | 3" |
| 52 | 46 | 3.6 30" | 3" |
| 53 | 46 | 3.6 30" | 3" |
| 54 | 20 | 3.6 30" | 3" |
| 55 | 20 | 3.6 30" | 3" |
| 56 | 16 | 3.6 30" | 3" |
| 57 | 16 | 3.6 30" | 3" |
| 58 | 16 | 3.6 30" | 3" |
| 59 | 16 | 3.6 30" | 3" |
| 60 | 16 | 3.6 30" | 3" |
| 61 | 16 | 3.6 30" | 3" |
| 62 | 16 | 3.6 30" | 3" |
| 63 | 16 | 3.6 30" | 3" |
| 64 | 16 | 3.6 30" | 3" |
| 65 | 16 | 3.6 30" | 3" |
| 66 | 16 | 3.6 30" | 3" |
| 67 | 16 | 3.6 30" | 3" |
| 68 | 16 | 3.6 30" | 3" |
| 69 | 16 | 3.6 30" | 3" |
| 70 | 16 | 3.6 30" | 3" |
| 71 | 16 | 3.6 30" | 3" |
| 72 | 16 | 3.6 30" | 3" |
| 73 | 16 | 3.6 30" | 3" |
| 74 | 16 | 3.6 30" | 3" |
| 75 | 16 | 3.6 30" | 3" |

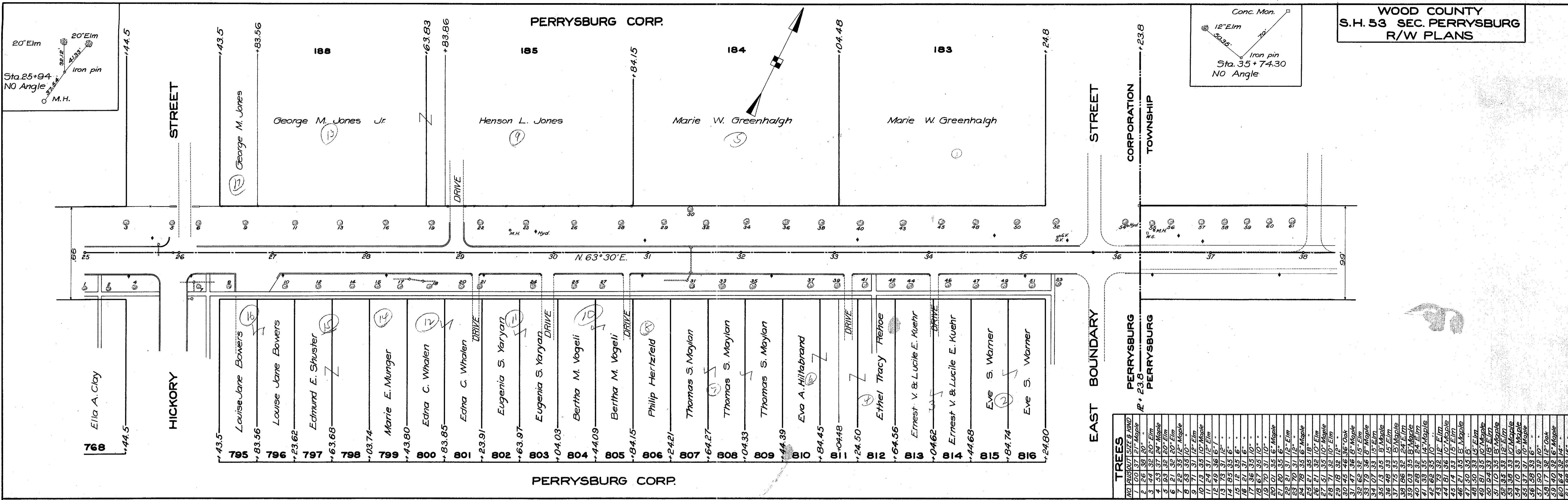
WOOD COUNTY
S.H. 53 SEC. PERRYSBURG
R/W PLANS

FOR ANY QUESTIONS PLEASE CONTACT ODOT DISTRICT 2 REAL ESTATE AT 419-353-8131

Scanned July 1997



**WOOD COUNTY
S.H. 53 SEC. PERRYSBURG
R/W PLANS**



TREES

| NO | PLANT | OUT | SIZE | HAND |
|----|-------|-----|------|-------|
| 1 | 00 | 37 | 27" | Maple |
| 2 | 26 | 38 | 20" | " |
| 3 | 44 | 32 | 20" | Elm |
| 4 | 53 | 31 | 20" | Maple |
| 5 | 61 | 32 | 20" | Elm |
| 6 | 81 | 32 | 20" | Elm |
| 7 | 22 | 35 | 12" | Maple |
| 8 | 53 | 35 | 10" | " |
| 9 | 71 | 37 | 12" | Elm |
| 10 | 79 | 35 | 10" | Maple |
| 11 | 46 | 36 | 15" | Elm |
| 12 | 46 | 36 | 15" | Elm |
| 13 | 73 | 36 | 12" | " |
| 14 | 65 | 35 | 6" | " |
| 15 | 72 | 35 | 6" | " |
| 16 | 81 | 37 | 6" | " |
| 17 | 36 | 35 | 10" | " |
| 18 | 36 | 35 | 10" | " |
| 19 | 36 | 35 | 10" | " |
| 20 | 01 | 35 | 6" | Maple |
| 21 | 20 | 35 | 6" | " |
| 22 | 21 | 37 | 12" | Elm |
| 23 | 70 | 37 | 12" | " |
| 24 | 79 | 35 | 6" | Maple |
| 25 | 81 | 35 | 10" | Elm |
| 26 | 81 | 35 | 10" | Elm |
| 27 | 51 | 35 | 10" | Maple |
| 28 | 71 | 32 | 10" | Elm |
| 29 | 78 | 32 | 12" | " |
| 30 | 45 | 46 | 36" | Oak |
| 31 | 47 | 36 | 8" | Maple |
| 32 | 46 | 36 | 12" | Elm |
| 33 | 46 | 36 | 12" | Elm |
| 34 | 07 | 35 | 15" | Elm |
| 35 | 73 | 35 | 8" | Maple |
| 36 | 48 | 33 | 15" | Elm |
| 37 | 75 | 35 | 8" | Maple |
| 38 | 86 | 32 | 24" | Elm |
| 39 | 03 | 35 | 8" | Maple |
| 40 | 81 | 35 | 10" | Elm |
| 41 | 33 | 35 | 14" | Maple |
| 42 | 62 | 35 | 10" | " |
| 43 | 73 | 32 | 12" | Elm |
| 44 | 61 | 36 | 10" | Maple |
| 45 | 74 | 33 | 15" | Elm |
| 46 | 71 | 33 | 8" | Maple |
| 47 | 30 | 35 | 15" | Elm |
| 48 | 50 | 35 | 15" | Elm |
| 49 | 61 | 35 | 10" | Maple |
| 50 | 54 | 33 | 15" | Elm |
| 51 | 70 | 35 | 8" | Maple |
| 52 | 35 | 35 | 12" | Elm |
| 53 | 36 | 33 | 10" | Maple |
| 54 | 37 | 37 | 10" | Maple |
| 55 | 58 | 33 | 6" | " |
| 56 | 58 | 33 | 6" | " |
| 57 | 50 | 32 | 10" | " |
| 58 | 77 | 32 | 12" | Oak |
| 59 | 40 | 32 | 12" | Maple |
| 60 | 64 | 32 | 12" | " |
| 61 | 82 | 32 | 12" | " |