

SR 65

WOOD COUNTY
S.H. 53 SECTIONS C & B (PART)
R/W PLANS

1/9

*R/W OK as shown
examined. Attended to
F.J.F.
4/5/44*

*Scanned
July 1997*

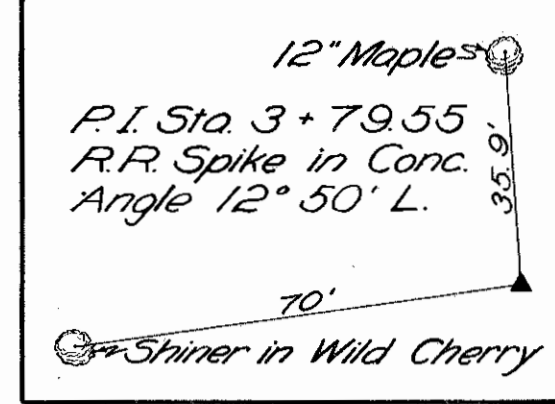
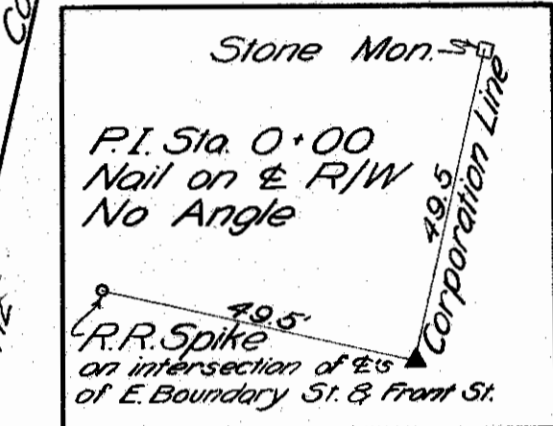
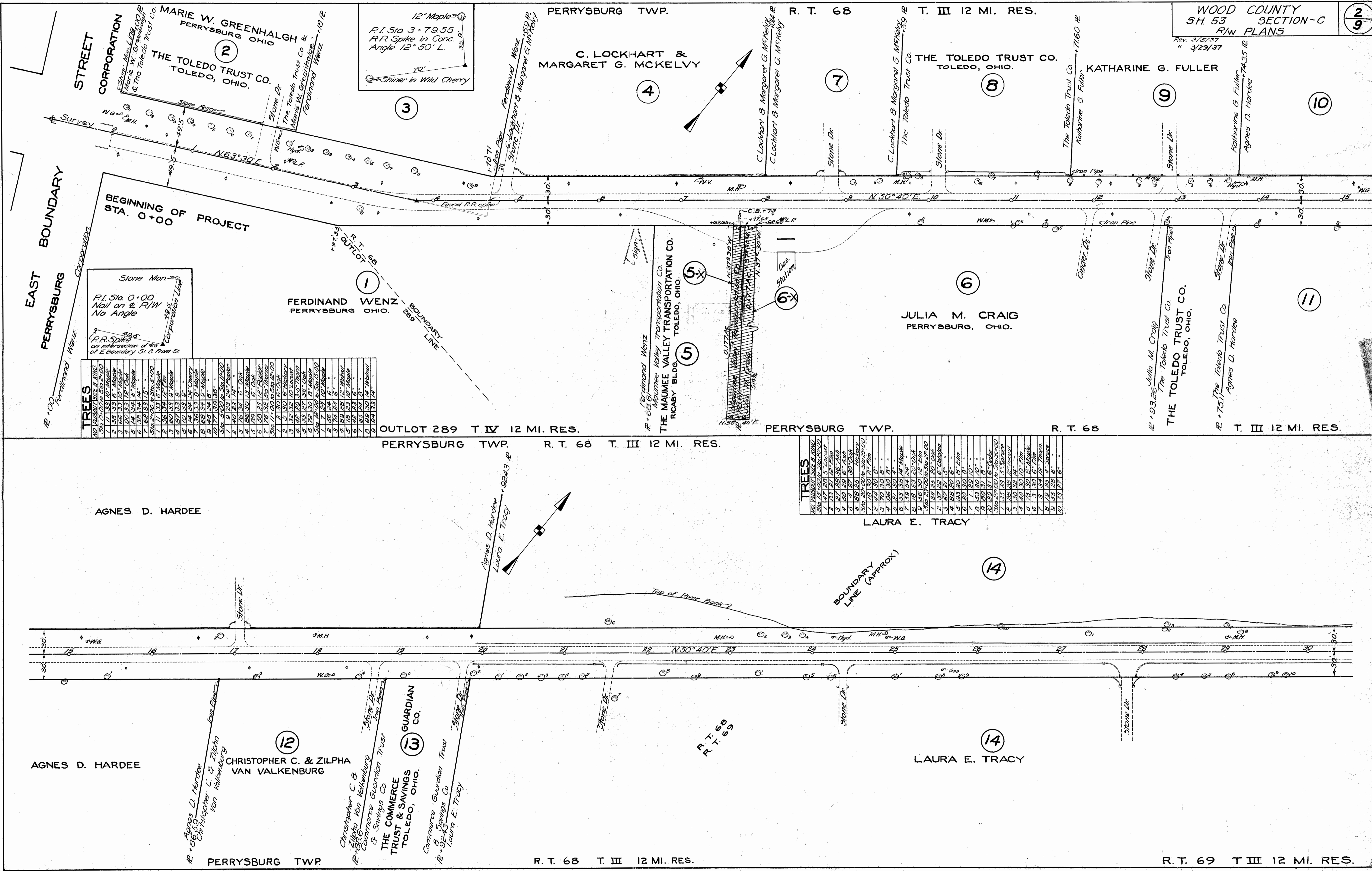
STATE OF OHIO
DEPARTMENT OF HIGHWAYS
RIGHT OF WAY PLANS
TOLEDO~GRAND RAPIDS ROAD
S.H. 53 SECTIONS C & B (PART)
WOOD COUNTY

Roads # 5 D-5

FOR ANY QUESTIONS PLEASE CONTACT ODOT DISTRICT 2 REAL ESTATE AT 419-353-8131

Scanned
5/24/1997

Rev. 3/5/37
3/29/37



TREES

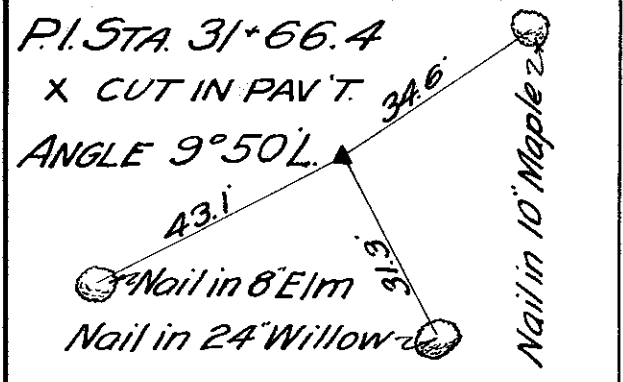
NO.	DIAMETER	SIZE & KIND
1	11.33	12\"/>
2	13.33	6\"/>
3	13.33	6\"/>
4	13.33	6\"/>
5	13.33	6\"/>
6	13.33	6\"/>
7	13.33	6\"/>
8	13.33	6\"/>
9	13.33	6\"/>
10	13.33	6\"/>
11	13.33	6\"/>
12	13.33	6\"/>
13	13.33	6\"/>
14	13.33	6\"/>
15	13.33	6\"/>
16	13.33	6\"/>
17	13.33	6\"/>
18	13.33	6\"/>
19	13.33	6\"/>
20	13.33	6\"/>
21	13.33	6\"/>
22	13.33	6\"/>
23	13.33	6\"/>
24	13.33	6\"/>
25	13.33	6\"/>
26	13.33	6\"/>
27	13.33	6\"/>
28	13.33	6\"/>
29	13.33	6\"/>
30	13.33	6\"/>
31	13.33	6\"/>
32	13.33	6\"/>
33	13.33	6\"/>
34	13.33	6\"/>
35	13.33	6\"/>
36	13.33	6\"/>
37	13.33	6\"/>
38	13.33	6\"/>
39	13.33	6\"/>
40	13.33	6\"/>
41	13.33	6\"/>
42	13.33	6\"/>
43	13.33	6\"/>
44	13.33	6\"/>
45	13.33	6\"/>
46	13.33	6\"/>
47	13.33	6\"/>
48	13.33	6\"/>
49	13.33	6\"/>
50	13.33	6\"/>

TREES

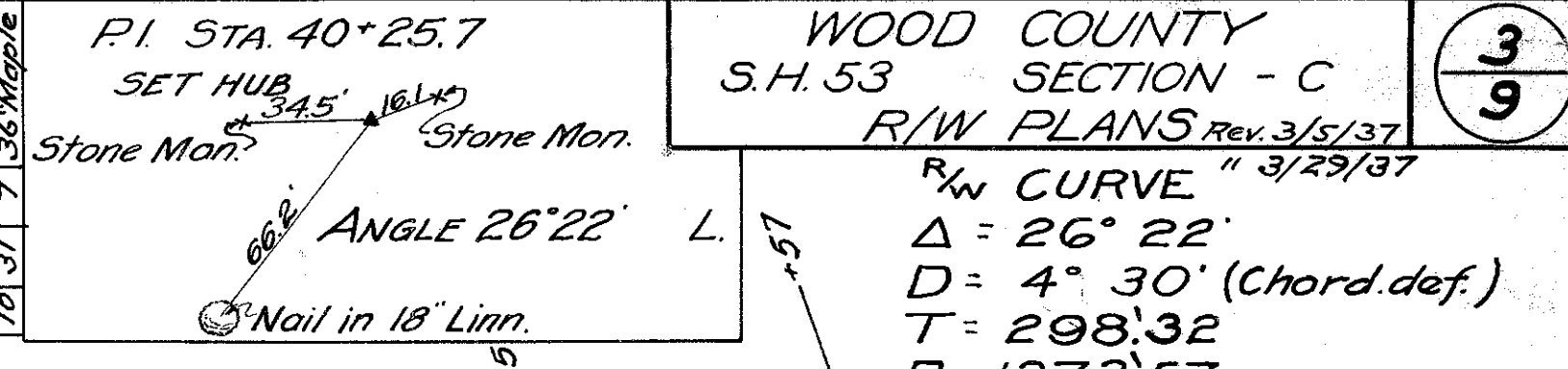
NO.	DIAMETER	SIZE & KIND
1	11.33	12\"/>
2	13.33	6\"/>
3	13.33	6\"/>
4	13.33	6\"/>
5	13.33	6\"/>
6	13.33	6\"/>
7	13.33	6\"/>
8	13.33	6\"/>
9	13.33	6\"/>
10	13.33	6\"/>
11	13.33	6\"/>
12	13.33	6\"/>
13	13.33	6\"/>
14	13.33	6\"/>
15	13.33	6\"/>
16	13.33	6\"/>
17	13.33	6\"/>
18	13.33	6\"/>
19	13.33	6\"/>
20	13.33	6\"/>
21	13.33	6\"/>
22	13.33	6\"/>
23	13.33	6\"/>
24	13.33	6\"/>
25	13.33	6\"/>
26	13.33	6\"/>
27	13.33	6\"/>
28	13.33	6\"/>
29	13.33	6\"/>
30	13.33	6\"/>
31	13.33	6\"/>
32	13.33	6\"/>
33	13.33	6\"/>
34	13.33	6\"/>
35	13.33	6\"/>
36	13.33	6\"/>
37	13.33	6\"/>
38	13.33	6\"/>
39	13.33	6\"/>
40	13.33	6\"/>

D-5

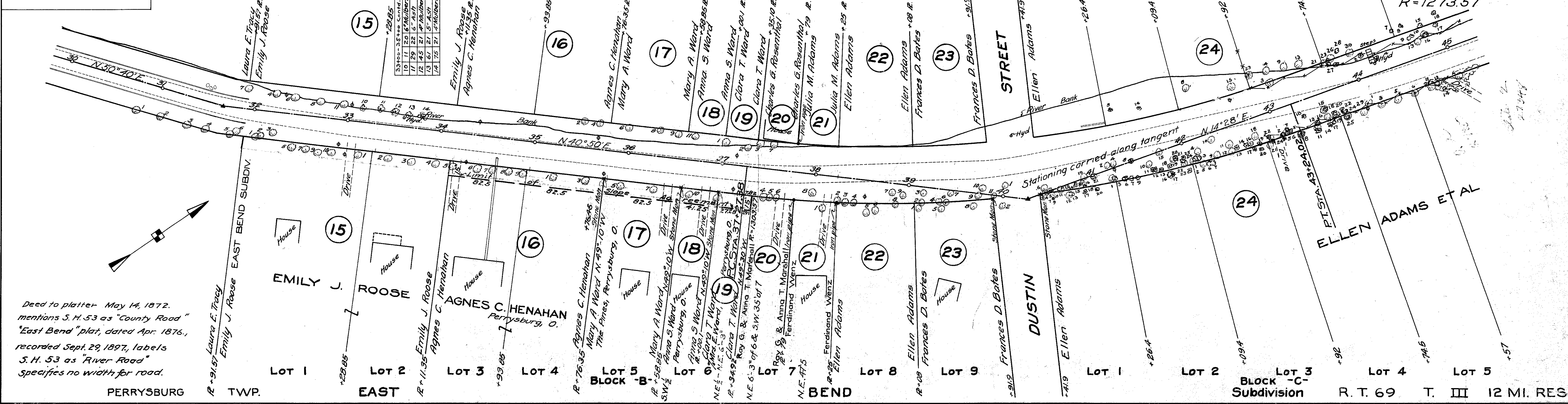
FOR ANY QUESTIONS PLEASE CONTACT ODOT DISTRICT 2 REAL ESTATE AT 419-353-8131



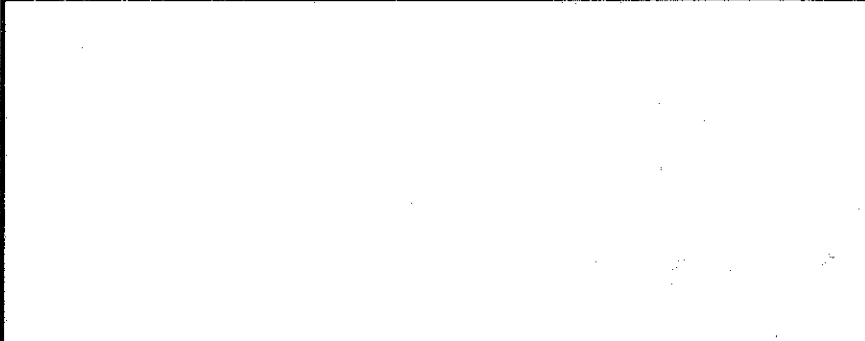
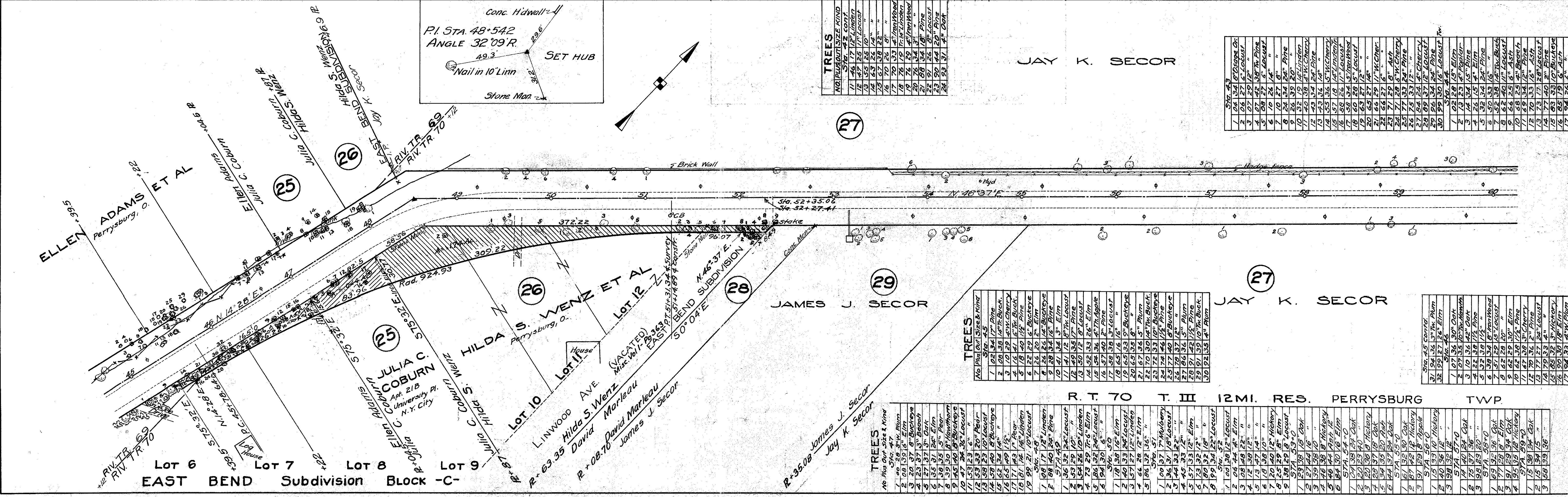
NO.	PLANT	SIZE	KIND
1	51x2	30x0.76	52+0
2	7	80	31' 12" Elm
3	7	90	31' 7" "
4	7	90	31' 7" "
5	7	90	31' 7" "
6	7	90	31' 7" "
7	7	90	31' 7" "
8	7	90	31' 7" "
9	7	90	31' 7" "
10	7	90	31' 7" "
11	7	90	31' 7" "
12	7	90	31' 7" "
13	7	90	31' 7" "
14	7	90	31' 7" "
15	7	90	31' 7" "
16	7	90	31' 7" "
17	7	90	31' 7" "
18	7	90	31' 7" "
19	7	90	31' 7" "
20	7	90	31' 7" "
21	7	90	31' 7" "
22	7	90	31' 7" "
23	7	90	31' 7" "
24	7	90	31' 7" "
25	7	90	31' 7" "
26	7	90	31' 7" "
27	7	90	31' 7" "
28	7	90	31' 7" "
29	7	90	31' 7" "
30	7	90	31' 7" "
31	7	90	31' 7" "
32	7	90	31' 7" "
33	7	90	31' 7" "
34	7	90	31' 7" "
35	7	90	31' 7" "
36	7	90	31' 7" "
37	7	90	31' 7" "
38	7	90	31' 7" "
39	7	90	31' 7" "
40	7	90	31' 7" "
41	7	90	31' 7" "
42	7	90	31' 7" "
43	7	90	31' 7" "
44	7	90	31' 7" "
45	7	90	31' 7" "
46	7	90	31' 7" "
47	7	90	31' 7" "
48	7	90	31' 7" "
49	7	90	31' 7" "
50	7	90	31' 7" "
51	7	90	31' 7" "
52	7	90	31' 7" "
53	7	90	31' 7" "
54	7	90	31' 7" "
55	7	90	31' 7" "
56	7	90	31' 7" "
57	7	90	31' 7" "
58	7	90	31' 7" "
59	7	90	31' 7" "
60	7	90	31' 7" "
61	7	90	31' 7" "
62	7	90	31' 7" "
63	7	90	31' 7" "
64	7	90	31' 7" "
65	7	90	31' 7" "
66	7	90	31' 7" "
67	7	90	31' 7" "
68	7	90	31' 7" "
69	7	90	31' 7" "
70	7	90	31' 7" "
71	7	90	31' 7" "
72	7	90	31' 7" "
73	7	90	31' 7" "
74	7	90	31' 7" "
75	7	90	31' 7" "
76	7	90	31' 7" "
77	7	90	31' 7" "
78	7	90	31' 7" "
79	7	90	31' 7" "
80	7	90	31' 7" "
81	7	90	31' 7" "
82	7	90	31' 7" "
83	7	90	31' 7" "
84	7	90	31' 7" "
85	7	90	31' 7" "
86	7	90	31' 7" "
87	7	90	31' 7" "
88	7	90	31' 7" "
89	7	90	31' 7" "
90	7	90	31' 7" "
91	7	90	31' 7" "
92	7	90	31' 7" "
93	7	90	31' 7" "
94	7	90	31' 7" "
95	7	90	31' 7" "
96	7	90	31' 7" "
97	7	90	31' 7" "
98	7	90	31' 7" "
99	7	90	31' 7" "
100	7	90	31' 7" "



WOOD COUNTY
S.H. 53 SECTION - C
R/W PLANS Rev. 3/15/37
P.W. CURVE " 3/29/37
Δ = 26° 22'
D = 4° 30' (Chord def.)
T = 298.32
R = 1273.57



Deed to platter May 14, 1872, mentions S. H. 53 as "County Road" "East Bend" plat, dated Apr. 1876., recorded Sept. 29, 1897, labels S. H. 53 as "River Road" specifies no width for road.



NO.	PLANT	SIZE	KIND
1	51x2	30x0.76	52+0
2	7	80	31' 12" Elm
3	7	90	31' 7" "
4	7	90	31' 7" "
5	7	90	31' 7" "
6	7	90	31' 7" "
7	7	90	31' 7" "
8	7	90	31' 7" "
9	7	90	31' 7" "
10	7	90	31' 7" "
11	7	90	31' 7" "
12	7	90	31' 7" "
13	7	90	31' 7" "
14	7	90	31' 7" "
15	7	90	31' 7" "
16	7	90	31' 7" "
17	7	90	31' 7" "
18	7	90	31' 7" "
19	7	90	31' 7" "
20	7	90	31' 7" "
21	7	90	31' 7" "
22	7	90	31' 7" "
23	7	90	31' 7" "
24	7	90	31' 7" "
25	7	90	31' 7" "
26	7	90	31' 7" "
27	7	90	31' 7" "
28	7	90	31' 7" "
29	7	90	31' 7" "
30	7	90	31' 7" "
31	7	90	31' 7" "
32	7	90	31' 7" "
33	7	90	31' 7" "
34	7	90	31' 7" "
35	7	90	31' 7" "
36	7	90	31' 7" "
37	7	90	31' 7" "
38	7	90	31' 7" "
39	7	90	31' 7" "
40	7	90	31' 7" "
41	7	90	31' 7" "
42	7	90	31' 7" "
43	7	90	31' 7" "
44	7	90	31' 7" "
45	7	90	31' 7" "
46	7	90	31' 7" "
47	7	90	31' 7" "
48	7	90	31' 7" "
49	7	90	31' 7" "
50	7	90	31' 7" "
51	7	90	31' 7" "
52	7	90	31' 7" "
53	7	90	31' 7" "
54	7	90	31' 7" "
55	7	90	31' 7" "
56	7	90	31' 7" "
57	7	90	31' 7" "
58	7	90	31' 7" "
59	7	90	31' 7" "
60	7	90	31' 7" "
61	7	90	31' 7" "
62	7	90	31' 7" "
63	7	90	31' 7" "
64	7	90	31' 7" "
65	7	90	31' 7" "
66	7	90	31' 7" "
67	7	90	31' 7" "
68	7	90	31' 7" "
69	7	90	31' 7" "
70	7	90	31' 7" "
71	7	90	31' 7" "
72	7	90	31' 7" "
73	7	90	31' 7" "
74	7	90	31' 7" "
75	7	90	31' 7" "
76	7	90	31' 7" "
77	7	90	31' 7" "
78	7	90	31' 7" "
79	7	90	31' 7" "
80	7	90	31' 7" "
81	7	90	31' 7" "
82	7	90	31' 7" "
83	7	90	31' 7" "
84	7	90	31' 7" "
85	7	90	31' 7" "
86	7	90	31' 7" "
87	7	90	31' 7" "
88	7	90	31' 7" "
89	7	90	31' 7" "
90	7	90	31' 7" "
91	7	90	31' 7" "
92	7	90	31' 7" "
93	7	90	31' 7" "
94	7	90	31' 7" "
95	7	90	31' 7" "
96	7	90	31' 7" "
97	7	90	31' 7" "
98	7	90	31' 7" "
99	7	90	31' 7" "
100	7	90	31' 7" "

NO.	PLANT	SIZE	KIND
1	51x2	30x0.76	52+0
2	7	80	31' 12" Elm
3	7	90	31' 7" "
4	7	90	31' 7" "
5	7	90	31' 7" "
6	7	90	31' 7" "
7	7	90	31' 7" "
8	7	90	31' 7" "
9	7	90	31' 7" "
10	7	90	31' 7" "
11	7	90	31' 7" "
12	7	90	31' 7" "
13	7	90	31' 7" "
14	7	90	31' 7" "
15	7	90	31' 7" "
16	7	90	31' 7" "
17	7	90	31' 7" "
18	7	90	31' 7" "
19	7	90	31' 7" "
20	7	90	31' 7" "
21	7	90	31' 7" "
22	7	90	31' 7" "
23	7	90	31' 7" "
24	7	90	31' 7" "
25	7	90	31' 7" "
26	7	90	31' 7" "
27	7	90	31' 7" "
28	7	90	31' 7" "
29	7	90	31' 7" "
30	7	90	31' 7" "
31	7	90	31' 7" "
32	7	90	31' 7" "
33	7	90	31' 7" "
34	7	90	31' 7" "
35	7	90	31' 7" "
36	7	90	31' 7" "
37	7	90	31' 7" "
38	7	90	31' 7" "
39	7	90	31' 7" "
40	7	90	31' 7" "
41	7	90	31' 7" "
42	7	90	31' 7" "
43	7	90	31' 7" "
44	7	90	31' 7" "
45	7	90	31' 7" "
46	7	90	31' 7" "
47	7	90	31' 7" "
48	7	90	31' 7" "
49	7	90	31' 7" "
50	7	90	31' 7" "
51	7	90	31' 7" "
52	7	90	31' 7" "
53	7	90	31' 7" "
54	7	90	31' 7" "
55	7	90	31' 7" "
56	7	90	31' 7" "
57	7	90	31' 7" "
58	7	90	31' 7" "
59	7	90	31' 7" "
60	7	90	31' 7" "
61	7	90	31' 7" "
62	7	90	31' 7" "
63	7	90	31' 7" "
64	7	90	31' 7" "
65	7	90	31' 7" "
66	7	90	31' 7" "
67	7	90	31' 7" "
68	7	90	31' 7" "
69	7	90	31' 7" "
70	7	90	31' 7" "
71	7	90	31' 7" "
72	7	90	31' 7" "
73	7	90	31' 7" "
74	7	90	31' 7" "
75	7	90	31' 7" "
76	7	90	31' 7" "
77	7	90	31' 7" "
78	7	90	31' 7" "
79	7	90	31' 7" "
80	7	90	31' 7" "
81	7	90	31' 7" "
82	7	90	31' 7" "
83	7	90	31' 7" "
84	7	90	31' 7" "
85	7	90	31' 7" "
86	7	90	31' 7" "
87	7	90	31' 7" "
88	7	90	31' 7" "
89	7	90	31' 7" "
90	7	90	31' 7" "
91	7	90	31' 7" "
92	7	90	31' 7" "
93	7	90	31' 7" "
94	7	90	31' 7" "
95	7	90	31' 7" "
96	7	90	31' 7" "
97	7	90	31' 7" "
98	7	90	31' 7" "
99	7	90	31' 7" "
100	7	90	31' 7" "

NO.	PLANT	SIZE	KIND
1	51x2	30x0.76	52+0
2	7	80	31' 12" Elm
3	7	90	31' 7" "
4	7	90	31' 7" "
5	7	90	31' 7" "
6	7	90	31' 7" "
7	7	90	31' 7" "
8	7	90	31' 7" "
9	7	90	31' 7" "
10	7	90	31' 7" "
11	7	90	31' 7" "
12	7	90	31' 7" "
13	7	9	

Scanned July 14, 2011

RIVER TRACT 70
T.3, U.S.R., PERRYSBURG TWP.

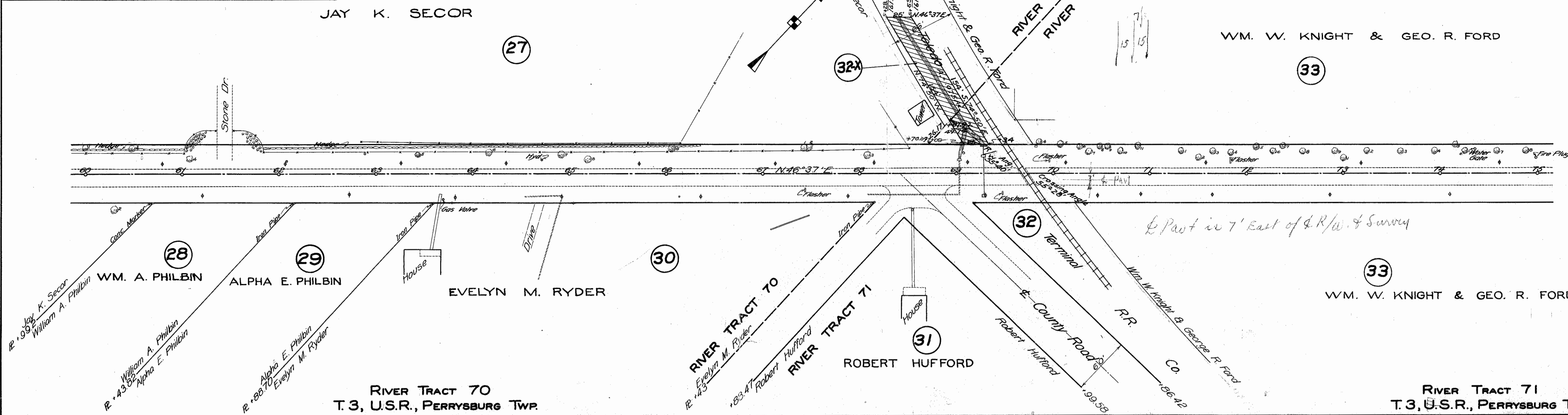
NO.	PLANT	SIZE	BY	AND
1	Maple	12"	12"	12"
2	Maple	12"	12"	12"
3	Maple	12"	12"	12"
4	Maple	12"	12"	12"
5	Maple	12"	12"	12"
6	Maple	12"	12"	12"
7	Maple	12"	12"	12"
8	Maple	12"	12"	12"
9	Maple	12"	12"	12"
10	Maple	12"	12"	12"
11	Maple	12"	12"	12"
12	Maple	12"	12"	12"
13	Maple	12"	12"	12"
14	Maple	12"	12"	12"
15	Maple	12"	12"	12"
16	Maple	12"	12"	12"
17	Maple	12"	12"	12"
18	Maple	12"	12"	12"
19	Maple	12"	12"	12"
20	Maple	12"	12"	12"
21	Maple	12"	12"	12"
22	Maple	12"	12"	12"
23	Maple	12"	12"	12"
24	Maple	12"	12"	12"
25	Maple	12"	12"	12"
26	Maple	12"	12"	12"
27	Maple	12"	12"	12"
28	Maple	12"	12"	12"
29	Maple	12"	12"	12"
30	Maple	12"	12"	12"
31	Maple	12"	12"	12"
32	Maple	12"	12"	12"
33	Maple	12"	12"	12"
34	Maple	12"	12"	12"
35	Maple	12"	12"	12"
36	Maple	12"	12"	12"
37	Maple	12"	12"	12"
38	Maple	12"	12"	12"
39	Maple	12"	12"	12"
40	Maple	12"	12"	12"
41	Maple	12"	12"	12"
42	Maple	12"	12"	12"
43	Maple	12"	12"	12"
44	Maple	12"	12"	12"
45	Maple	12"	12"	12"
46	Maple	12"	12"	12"
47	Maple	12"	12"	12"
48	Maple	12"	12"	12"
49	Maple	12"	12"	12"
50	Maple	12"	12"	12"

JAY K. SECOR

27

WM. W. KNIGHT & GEO. R. FORD

33



RIVER TRACT 70
T.3, U.S.R., PERRYSBURG TWP.

RIVER TRACT 71
T.3, U.S.R., PERRYSBURG TWP.

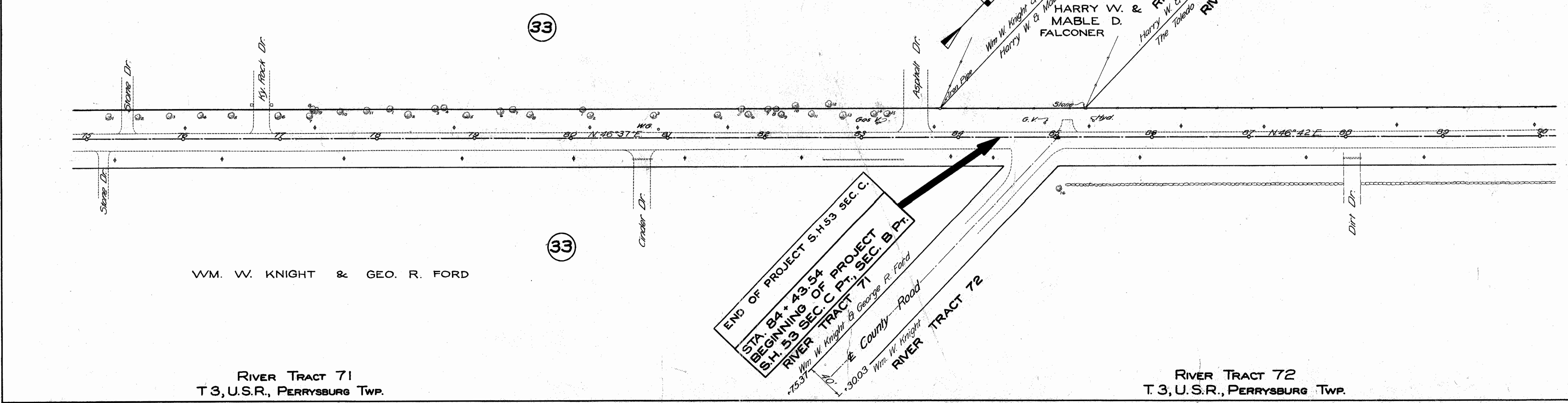
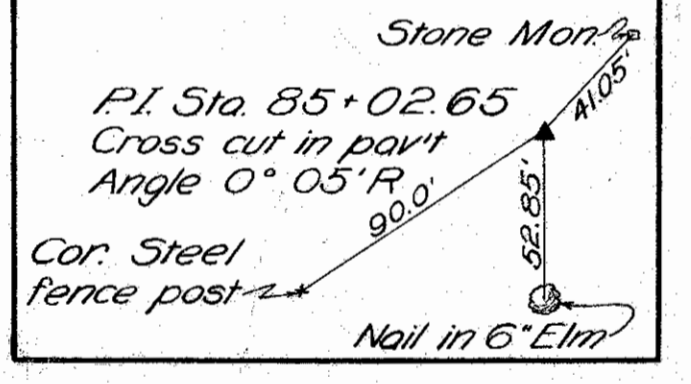
NO.	PLANT	SIZE	BY	AND
1	Maple	12"	12"	12"
2	Maple	12"	12"	12"
3	Maple	12"	12"	12"
4	Maple	12"	12"	12"
5	Maple	12"	12"	12"
6	Maple	12"	12"	12"
7	Maple	12"	12"	12"
8	Maple	12"	12"	12"
9	Maple	12"	12"	12"
10	Maple	12"	12"	12"
11	Maple	12"	12"	12"
12	Maple	12"	12"	12"
13	Maple	12"	12"	12"
14	Maple	12"	12"	12"
15	Maple	12"	12"	12"
16	Maple	12"	12"	12"
17	Maple	12"	12"	12"
18	Maple	12"	12"	12"
19	Maple	12"	12"	12"
20	Maple	12"	12"	12"
21	Maple	12"	12"	12"
22	Maple	12"	12"	12"
23	Maple	12"	12"	12"
24	Maple	12"	12"	12"
25	Maple	12"	12"	12"
26	Maple	12"	12"	12"
27	Maple	12"	12"	12"
28	Maple	12"	12"	12"
29	Maple	12"	12"	12"
30	Maple	12"	12"	12"
31	Maple	12"	12"	12"
32	Maple	12"	12"	12"
33	Maple	12"	12"	12"
34	Maple	12"	12"	12"
35	Maple	12"	12"	12"
36	Maple	12"	12"	12"
37	Maple	12"	12"	12"
38	Maple	12"	12"	12"
39	Maple	12"	12"	12"
40	Maple	12"	12"	12"

RIVER TRACT 71
T.3, U.S.R., PERRYSBURG TWP.

RIVER TRACT 72
T.3, U.S.R., PERRYSBURG TWP.

WM. W. KNIGHT & GEO. R. FORD

33



RIVER TRACT 71
T.3, U.S.R., PERRYSBURG TWP.

RIVER TRACT 72
T.3, U.S.R., PERRYSBURG TWP.

END OF PROJECT S.H.53 SEC. C.
 BEGINNING OF PROJECT
 S.H. 53 SEC. C PT. SEC. B PT.
 RIVER TRACT 71
 Wm. W. Knight & George R. Ford
 County Road
 Wm. W. Knight
 RIVER TRACT 72

FOR ANY QUESTIONS PLEASE CONTACT ODOT DISTRICT 2 REAL ESTATE AT 419-353-8131

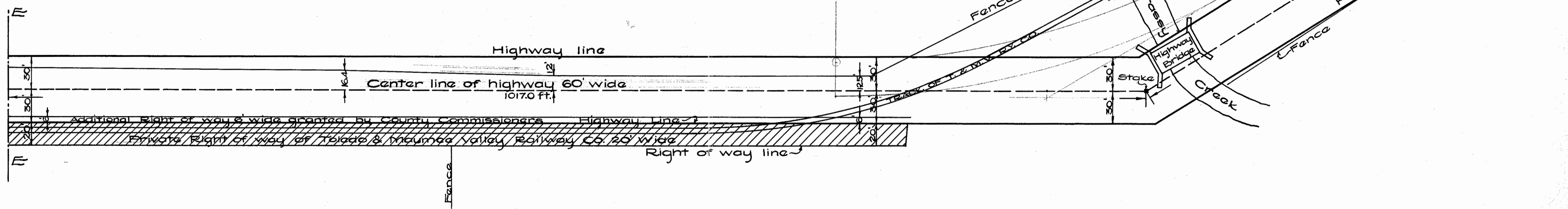
Scanned
July 1997

clip to 53 B

Map of the Public Highway
and the
Toledo & Maumee Valley Railway
across
Ross Township, Wood County
Ohio

Scale-1 in. = 50 ft.

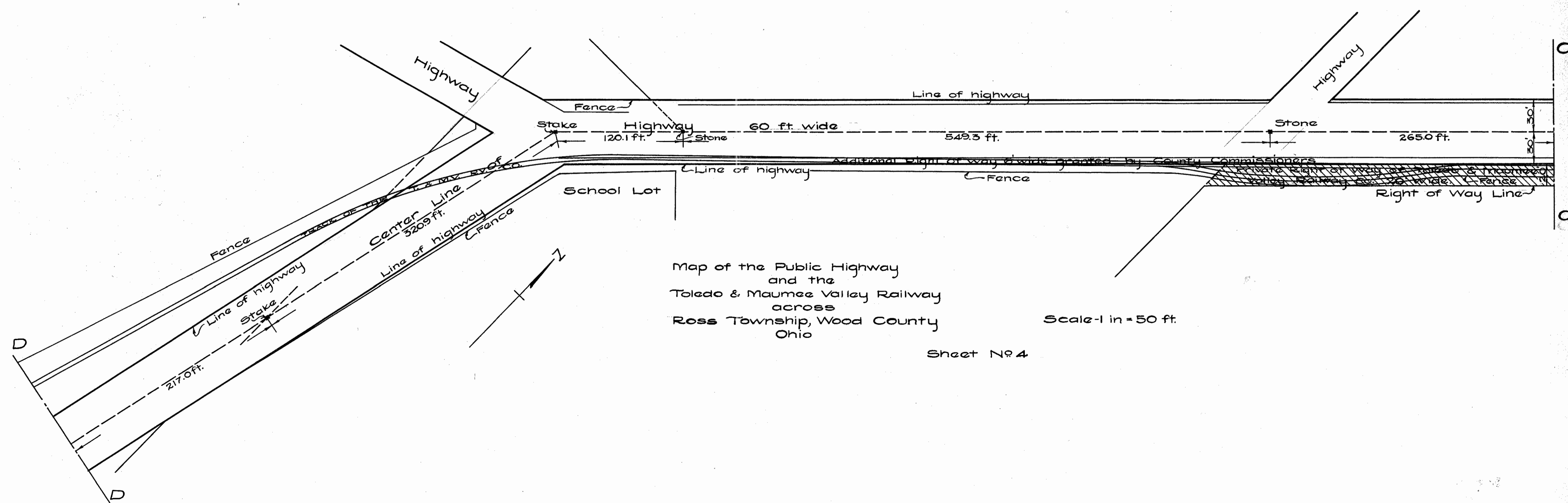
Sheet No 5



Map of the Public Highway
and the
Toledo & Maumee Valley Railway
across
Ross Township, Wood County
Ohio

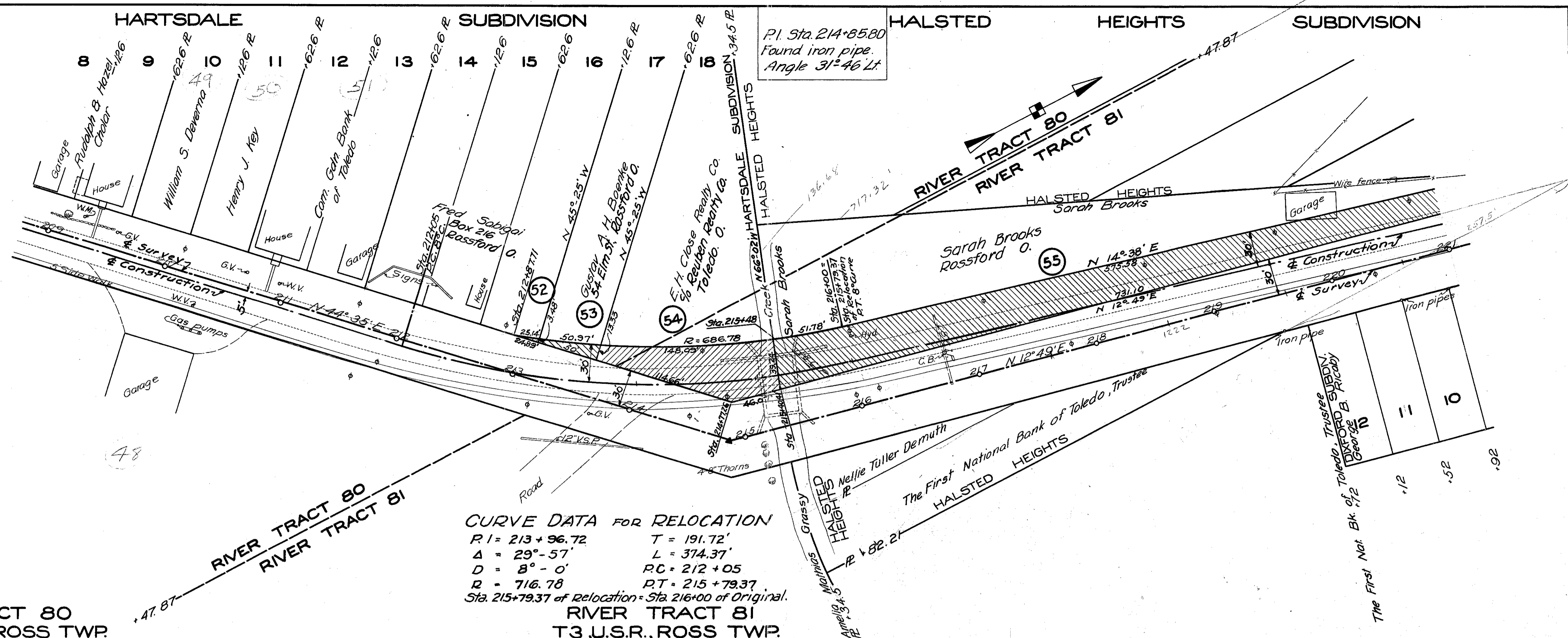
Scale-1 in. = 50 ft.

Sheet No 4



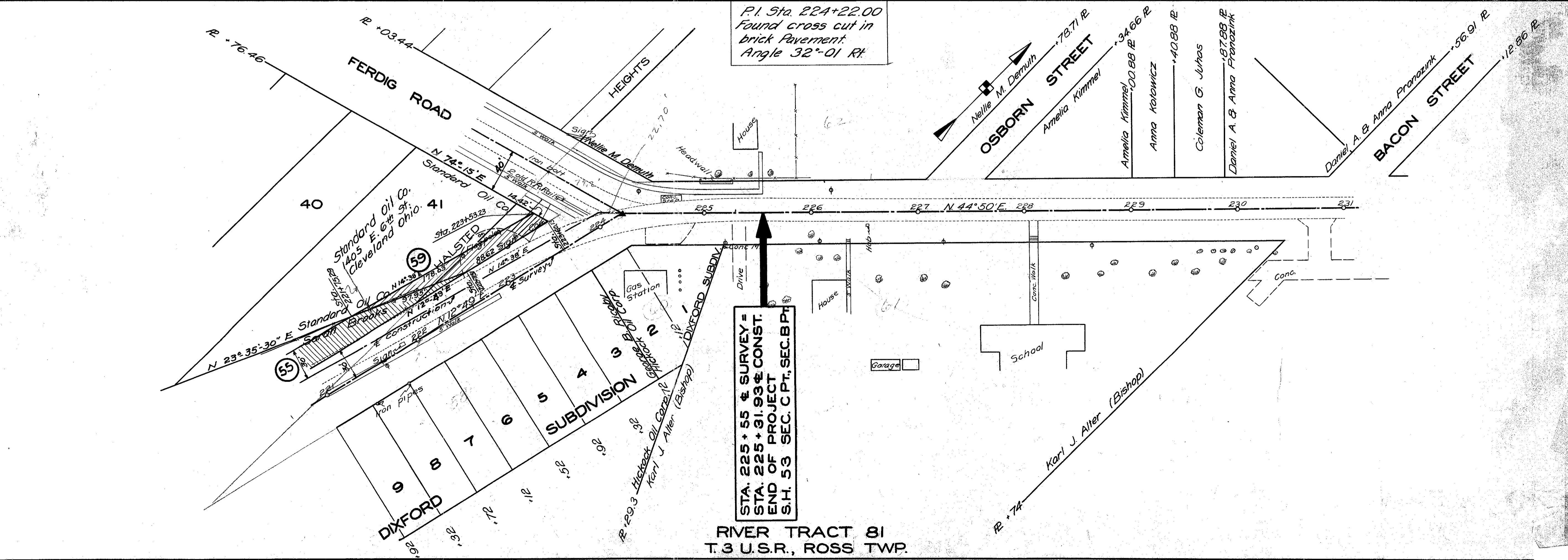
TREES

NO	VISUAL	SIZE	KIND
1	18	8"	Catalpa
2	4	10"	Thorn
3	16	8"	"
4	27	8"	"
5	18	20"	8"



TREES

NO	VISUAL	SIZE	KIND
1	13	30"	Ash
2	42	8"	Ash
3	55	12"	Maple
4	62	12"	Elm
5	62	14"	Box Elder
6	76	8"	Maple
7	82	16"	Box Elder
8	00	6"	Elm
9	07	42"	Catalpa
10	24	43"	6"
11	62	62"	2"
12	03	62"	2"
13	24	67"	2"
14	39	60"	2"
15	71	59"	2"
16	84	49"	3"
17	19	58"	2"
18	30	48"	2"
19	60	59"	4"
20	65	49"	4"



STA. 225 + 55 & SURVEY =
STA. 225 + 91.93 & CONST.
END OF PROJECT
S.H. 53 SEC. C P.T. SEC. B P.T.