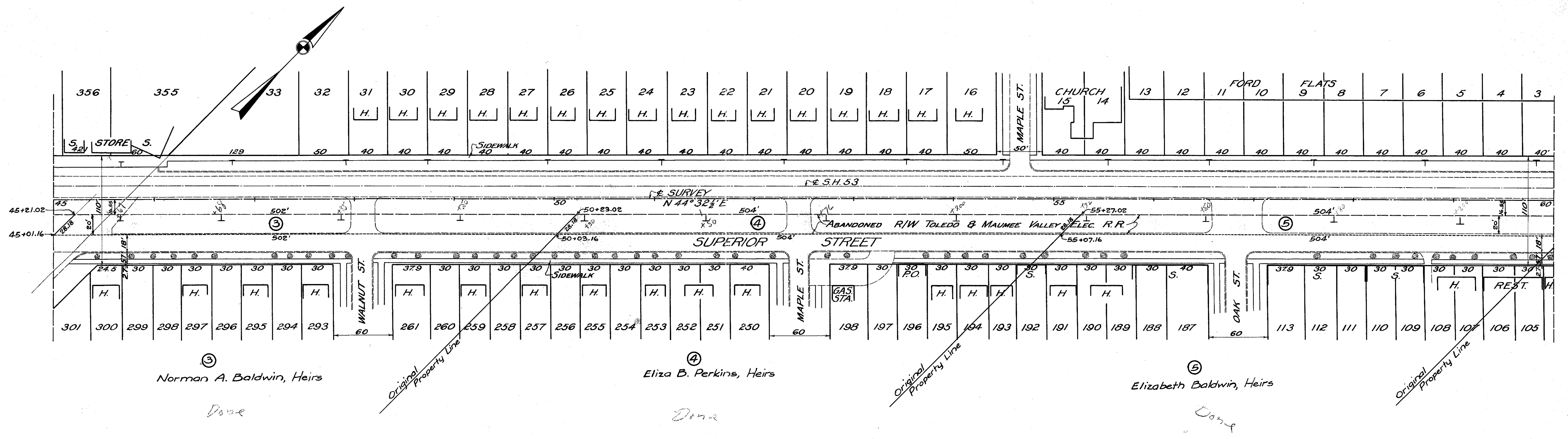
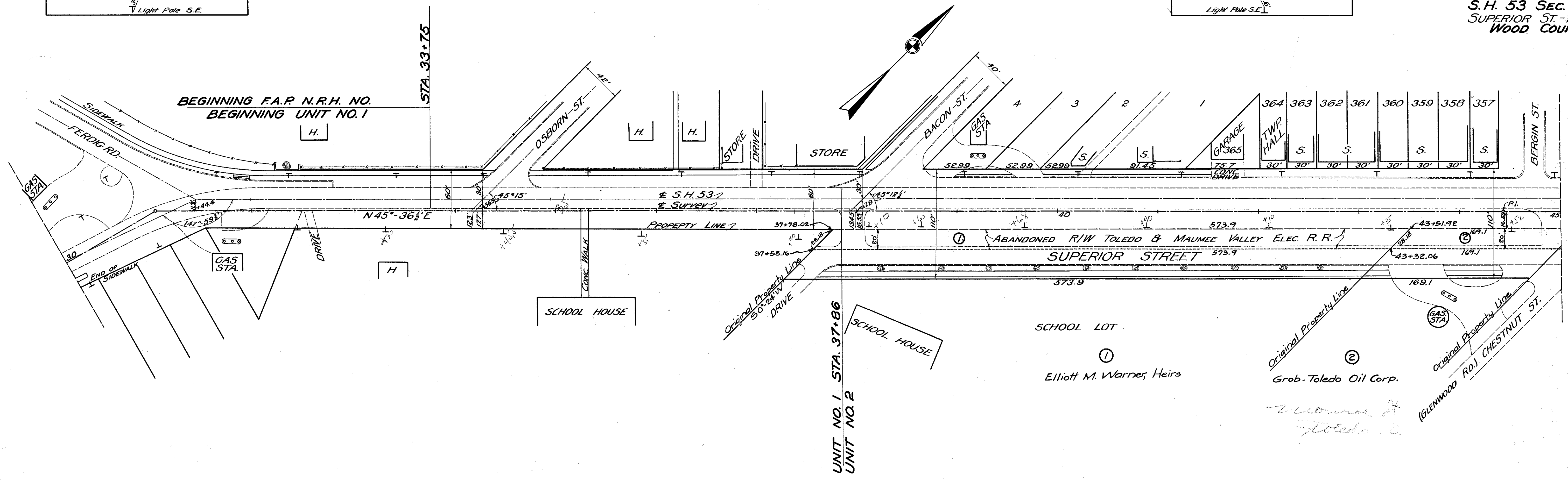


Scanned July 14, 1997

S Plug Ball Fire Hydrant N.
Light Pole W. 30.5'
Cross in Brick P.I. Sta. 31+03.00
L = 30°15' RI
Light Pole S.E.

Iron Stake NW
Base Pipe NW
R.R. Spike P.I. Sta. 44+42.80
L = 1°04' LI
Light Pole S.E.

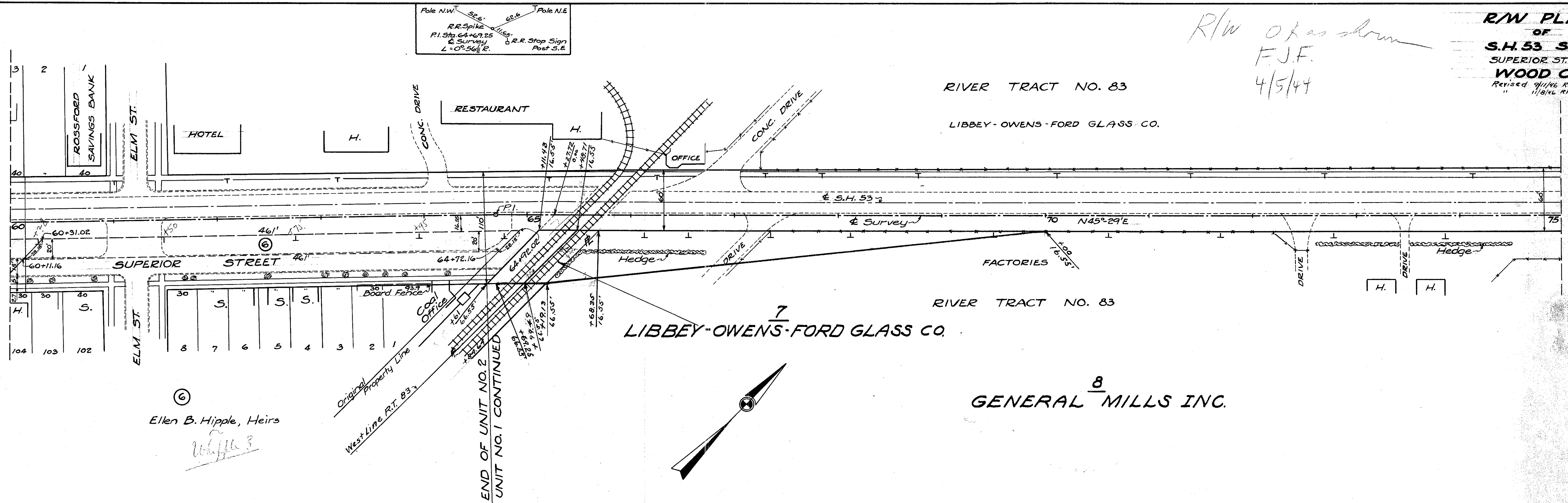
R/W PLANS OF S.H. 53 SEC. B PART SUPERIOR ST. - ROSSFORD WOOD COUNTY



R 8065 of D-4

R/W *OK as shown*
F.J.F.
4/5/44

R/W PLANS
OF
S.H. 53 SEC. B PART
SUPERIOR ST. - ROSSFORD
WOOD COUNTY
Revised 9/1/46 RHP
11/8/46 RHP



⑥
Ellen B. Hipple, Heirs
Hipple?

7
LIBBEY-OWENS-FORD GLASS CO.

8
GENERAL MILLS INC.

