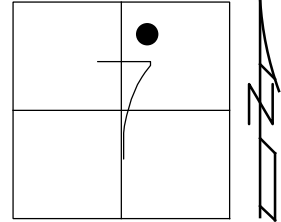


O.D.O.T. DISTRICT 2 SURVEY OFFICE (USE ONLY)

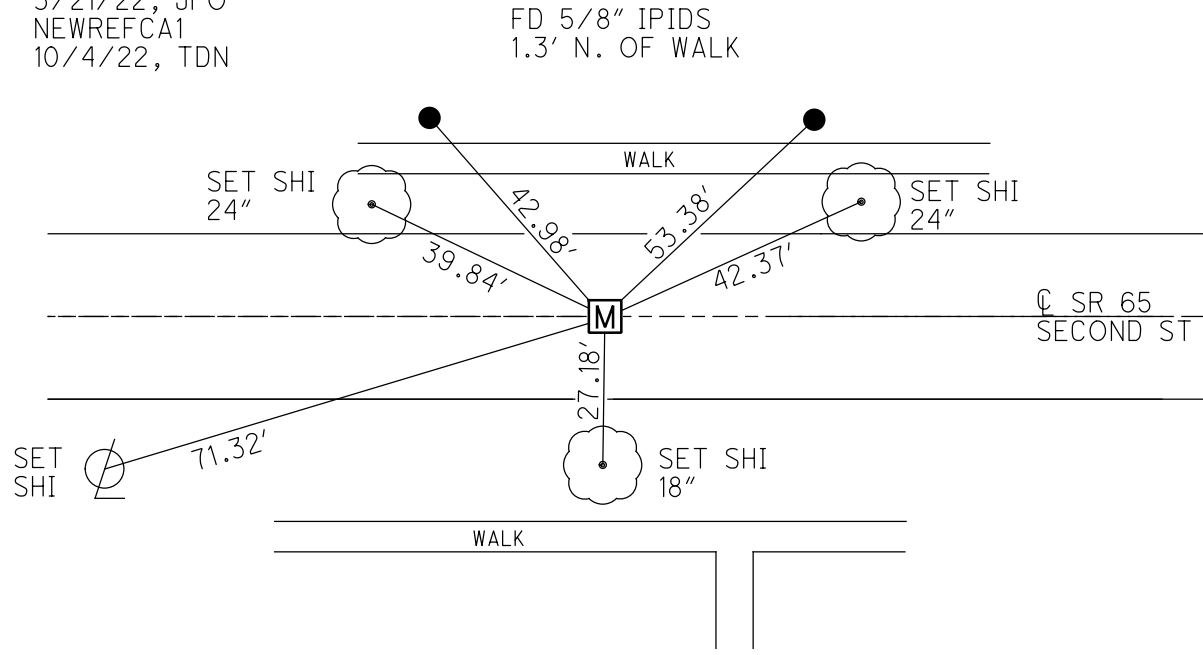
PERSONNEL _____ REFERENCE NO. 1 CA SHEET 6 OF 40
 NOTES O'DONNELL DATE 3/21/22 ROUTE SR 65
 H.C. NIESE WEATHER SUNNY COUNTY WOOD
 R.C. AUBLE TEMP. 5° TOWNSHIP GRAND RAPIDS
 DWG BY RHOADES PID 95796 SECTION 7
 T 5 N R 9 E

TYPE MONUMENT MONBOX W/1" IPIN
 ON SURFACE - ~~BELOW~~ ON
 OFFSET \odot PAVEMENT ON LT : RT
- TO - EDGE PAVEMENT
 STATION: 34+05.1



HORIZ.DATUM: NAD83 2011 GEOID: NAVD88 2018
 GRID: NORTHING: 638336.122 EASTING: 1592447.227

RECORD:
 FD MONBOX
 6/24/04, DCH
 FD MONBOX
 W/1" IPIN
 REFCA1
 3/21/22, JFO
 NEWREFCA1
 10/4/22, TDN



RES #24351

O.D.O.T. DISTRICT 2 SURVEY OFFICE (USE ONLY)

PERSONNEL

REFERENCE NO. 1 CA

SHEET 6 OF 16

NOTES HOMAN DATE 6/24/04
 H.C. HUSS WEATHER SUNNY
 R.C. NUHFER TEMP. 70°

ROUTE SR 65
 COUNTY WOOD
 TOWNSHIP GRAND RAPIDS
 SECTION 7
 T 5 N R 9 E

DWG BY AUBLE PID _____

TYPE MONUMENT MONBOX

ON SURFACE - ~~BELOW~~ ON _____

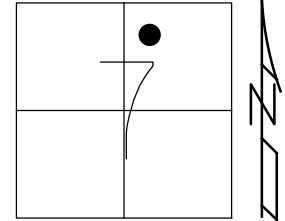
OFFSET \odot PAVEMENT ON _____ LT : RT

_____ TO _____ EDGE PAVEMENT

STATION: 34+00

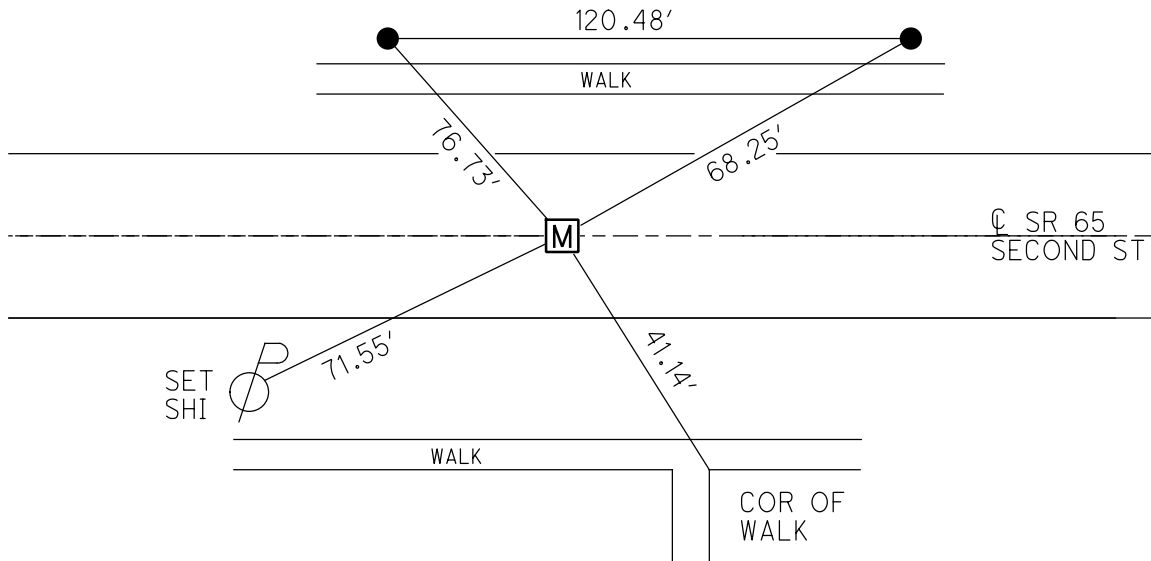
HORZ.DATUM: _____ GEOID: _____

GRID: NORTHING: _____ EASTING: _____



RECORD:
 FD MONBOX
 6/24/04, DCH

SET 5/8" IPINS
 1.3' N. OF WALK



RES #24351

O.D.O.T. DISTRICT 2 SURVEY OFFICE

PERSONNEL

REFERENCE NO. I-Ca

SHEET 4 OF 49

NOTES Homan

H.C. Huss

R.C. Dufter

DATE 6-24-04

WEATHER Sunny

TEMP. 70°F

ROUTE SR-65

COUNTY Wood

TOWNSHIP Grand Rapids

SECTION 7

T5 NR 9 E

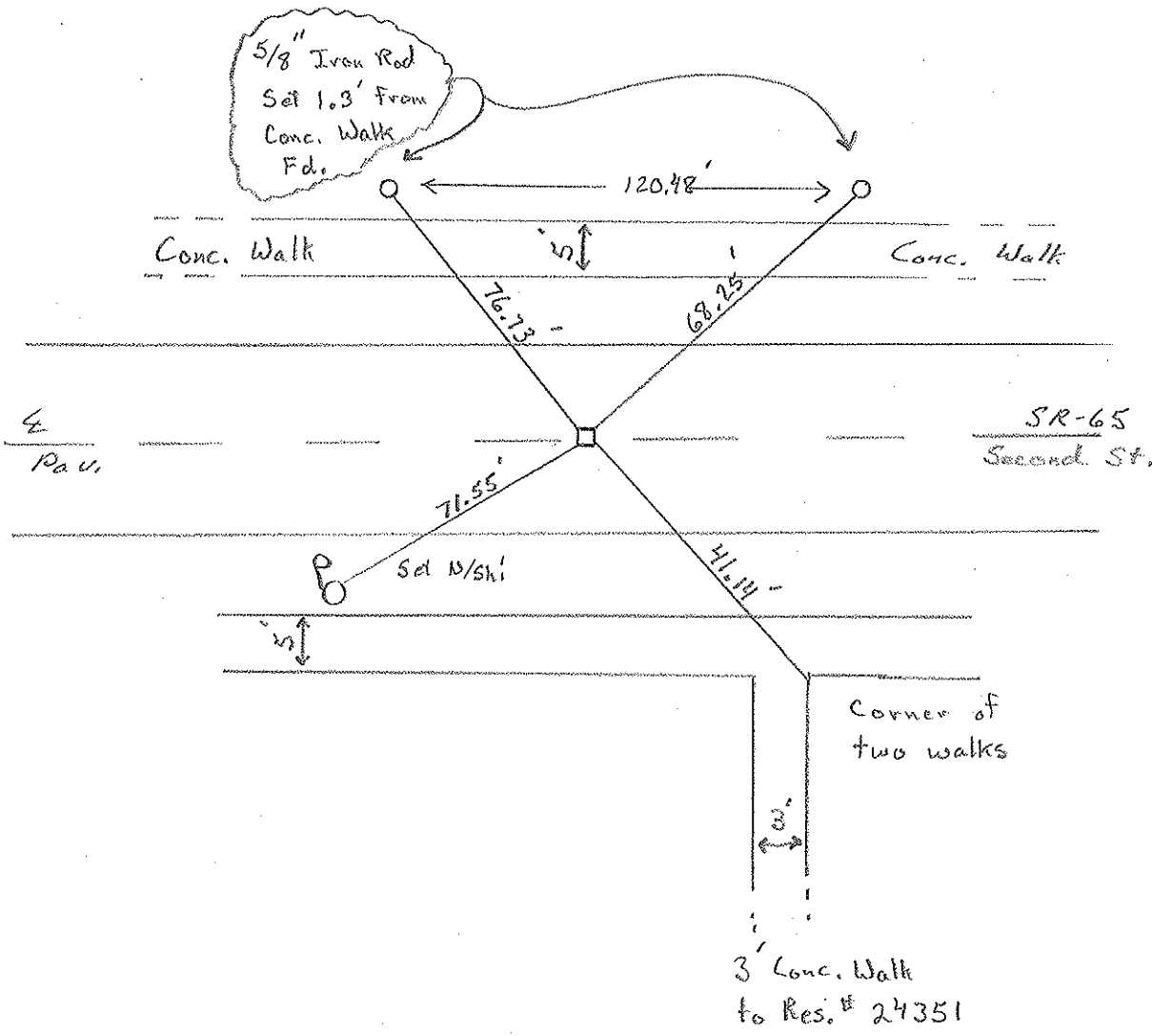
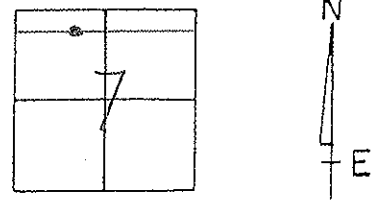
TYPE MONUMENT Mon Box

~~ON SURFACE~~ ~~BELOW~~ Surface

~~NEAR & PAVT~~ ~~RIGHT~~ on E

TO EDGE PAVEMENT

S.L.M. 34+10

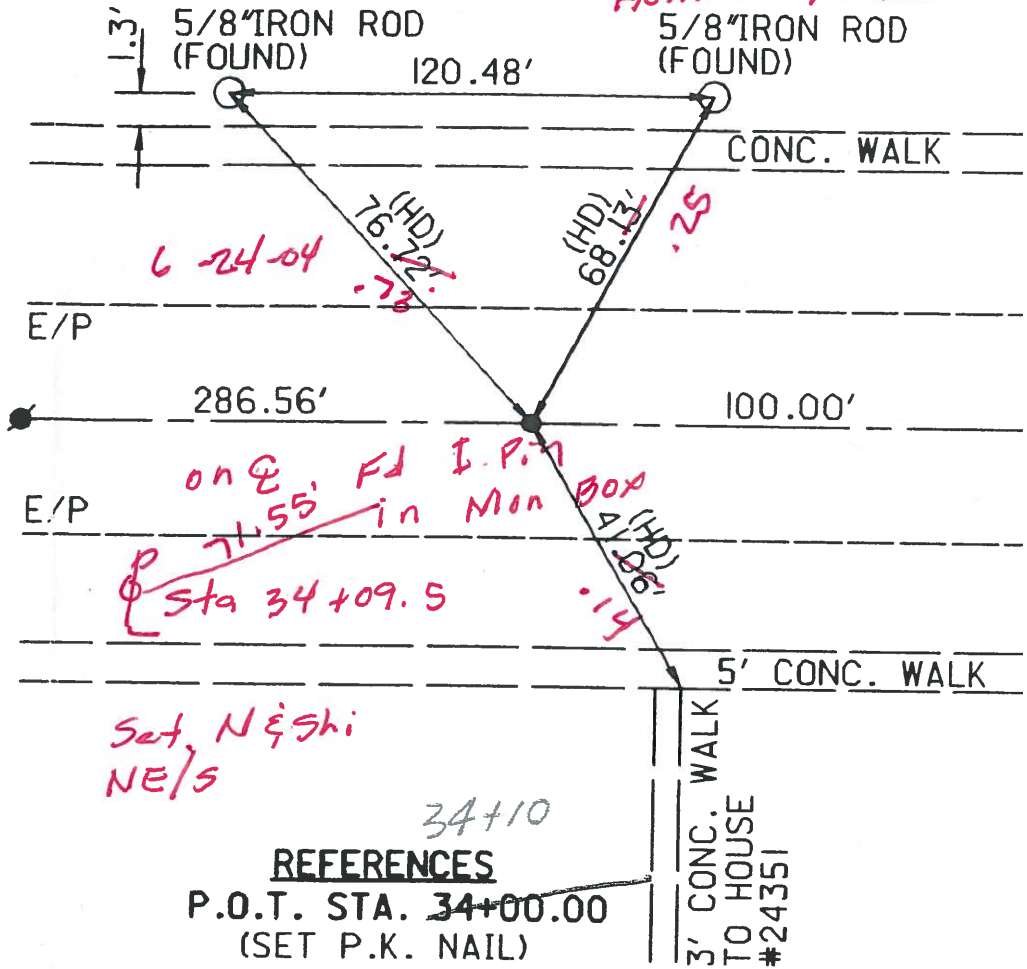


1-Ca

9-2004
Fd
monBox @
Superior
Blm

NOT TO SCALE (3X TYP.)

Sunny 70°
Huss HC
Nuhfer RC
Homan Notes



(HD)=HORIZONTAL DISTANCE
(SD)=SLOPE DISTANCE

(145)
PIKE (SET)
TA. 31+13.44