

O.D.O.T. DISTRICT 2 SURVEY OFFICE (USE ONLY)

PERSONNEL

REFERENCE NO. 1 CB

SHEET 7 OF 40

NOTES O'DONNELL

DATE 6/24/04

ROUTE SR 65

H.C. AUBLE

WEATHER SUNNY

COUNTY WOOD

R.C. O'DONNELL

TEMP. 70°

TOWNSHIP GRAND RAPIDS

DWG BY RHOADES

PID 95796

SECTION 7

T 5 N R 9 E

TYPE MONUMENT MONBOX W/ 1" IPIN

ON SURFACE - ~~BELOW~~ ON

OFFSET \varnothing PAVEMENT ON LT : RT

- TO - EDGE PAVEMENT

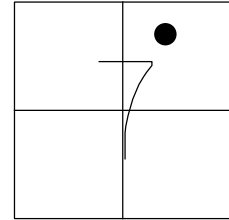
STATION: 36+50.95

HORIZ.DATUM: NAD83 2011

GEOID: NAVD88 2018

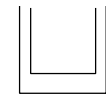
GRID: NORTHING: 638389.791

EASTING: 1592687.106

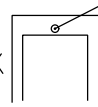


RECORD:
 FD MONBOX
 6/24/04, DCH
 FD MONBOX
 W/1" IPIN
 REFCB1
 11/02/20, JFO
 FD MONBOX
 W/1" IPIN
 NEWREFCB1
 10/4/22, TDN

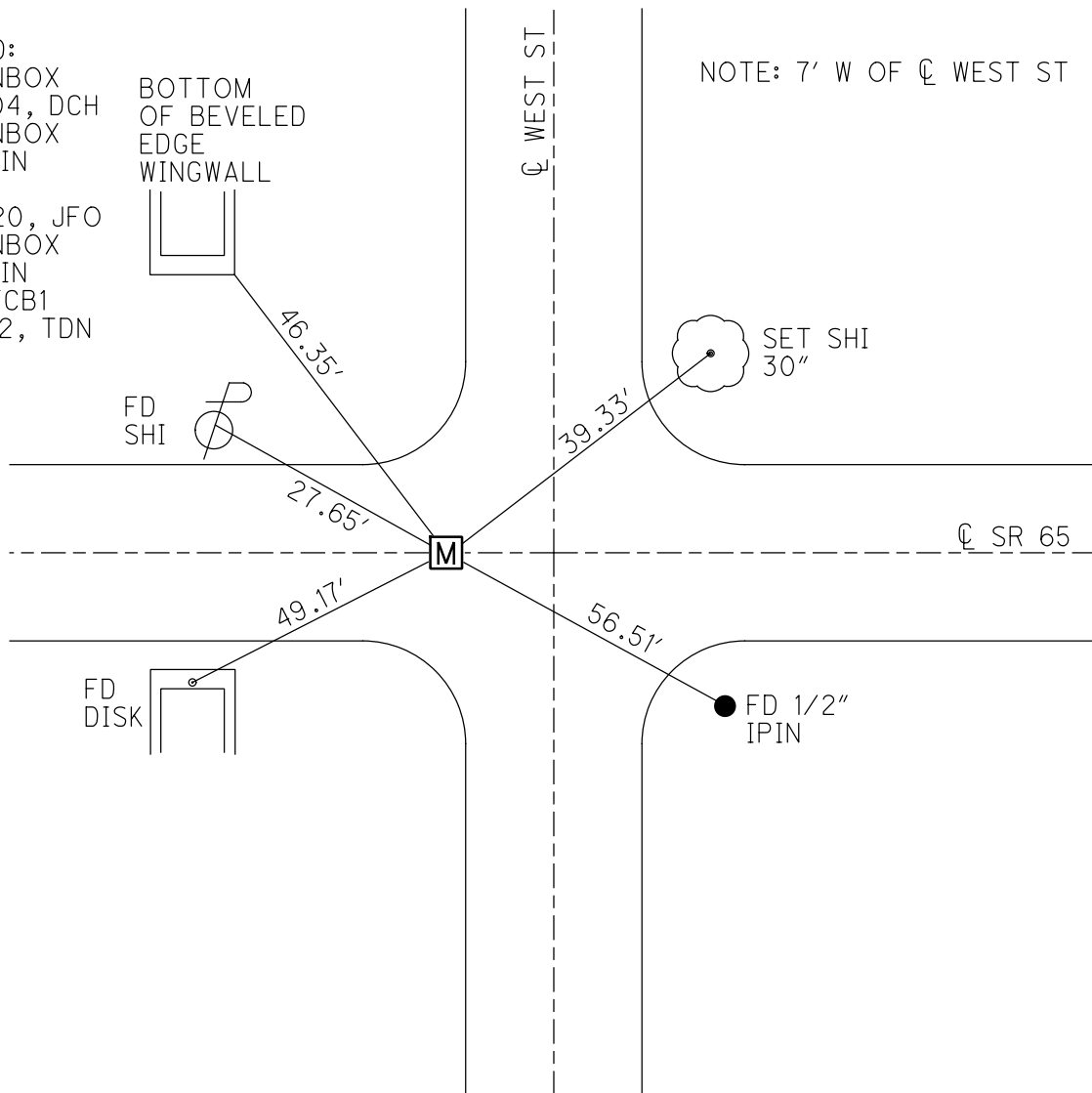
BOTTOM
 OF BEVELED
 EDGE
 WINGWALL



FD
 DISK



NOTE: 7' W OF \varnothing WEST ST



O.D.O.T. DISTRICT 2 SURVEY OFFICE (USE ONLY)

PERSONNEL

REFERENCE NO. 1 CB

SHEET 7 OF 16

NOTES HOMAN

DATE 6/24/04

ROUTE SR 65

H.C. HUSS

WEATHER SUNNY

COUNTY WOOD

R.C. NUHFER

TEMP. 70°

TOWNSHIP GRAND RAPIDS

DWG BY AUBLE PID _____

SECTION 7

T 5 N R 9 E

TYPE MONUMENT MONBOX

ON SURFACE - ~~BELOW~~ ON

OFFSET ☉ PAVEMENT ON LT : RT

- TO - EDGE PAVEMENT

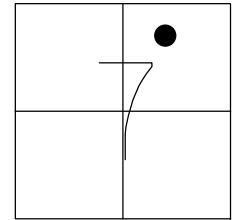
STATION: 36+55

HORZ. DATUM: -

GEOID: -

GRID: NORTHING: -

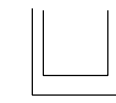
EASTING: -



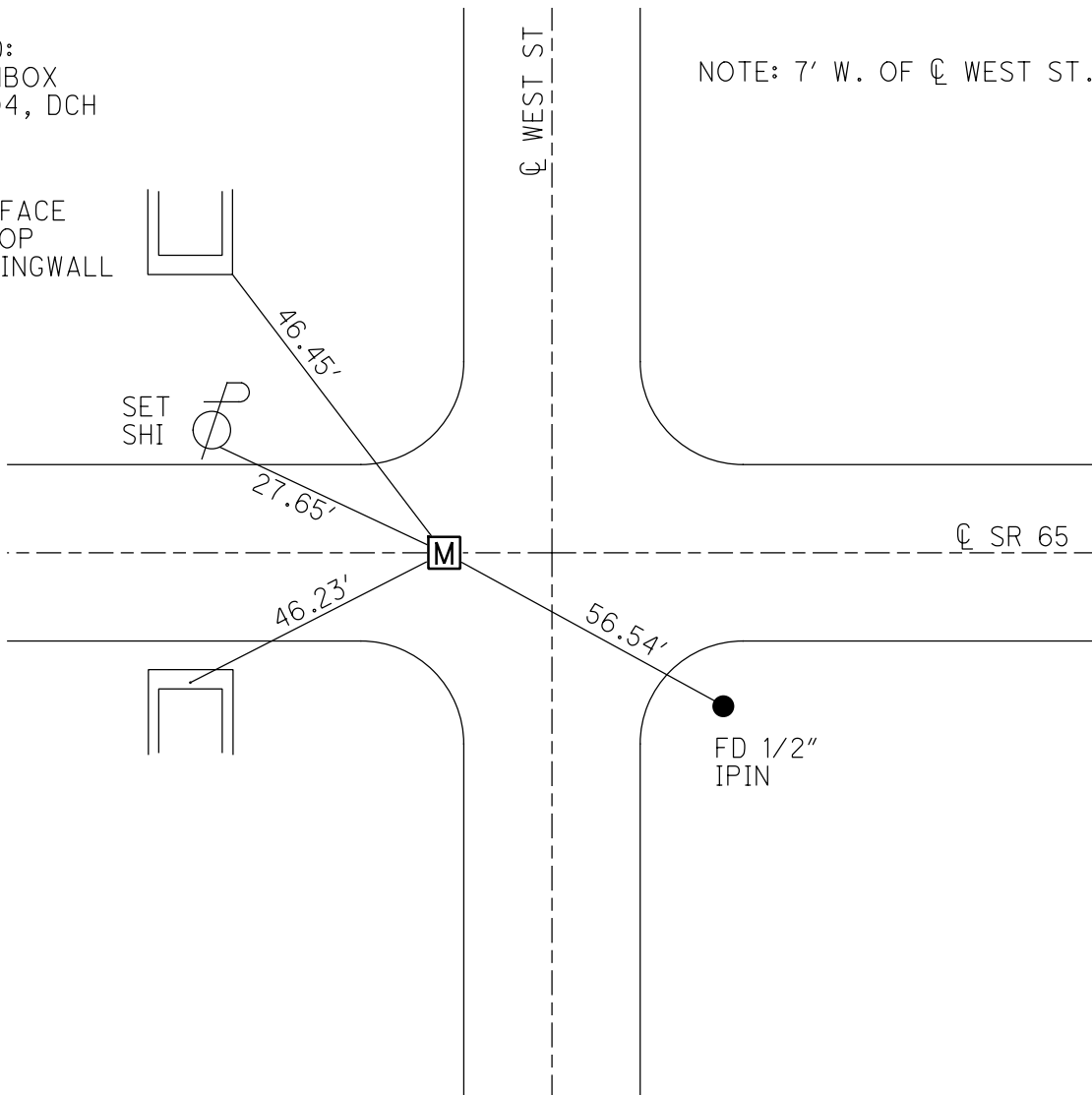
RECORD:
FD MONBOX
6/24/04, DCH

NOTE: 7' W. OF ☉ WEST ST.

COR FACE
AT TOP
OF WINGWALL



SET
SHI



FD 1/2"
IPIN

O.D.O.T. DISTRICT 2 SURVEY OFFICE

PERSONNEL

REFERENCE NO. 1-C₆

SHEET 5 OF 49

NOTES Homan

H.C. Huss

R.C. Wahfer

DATE 6-24-04

WEATHER Sunny

TEMP. +70°F

ROUTE SR-65

COUNTY Wood

TOWNSHIP Grand Rapids

SECTION 7

T₅ N R 9 E

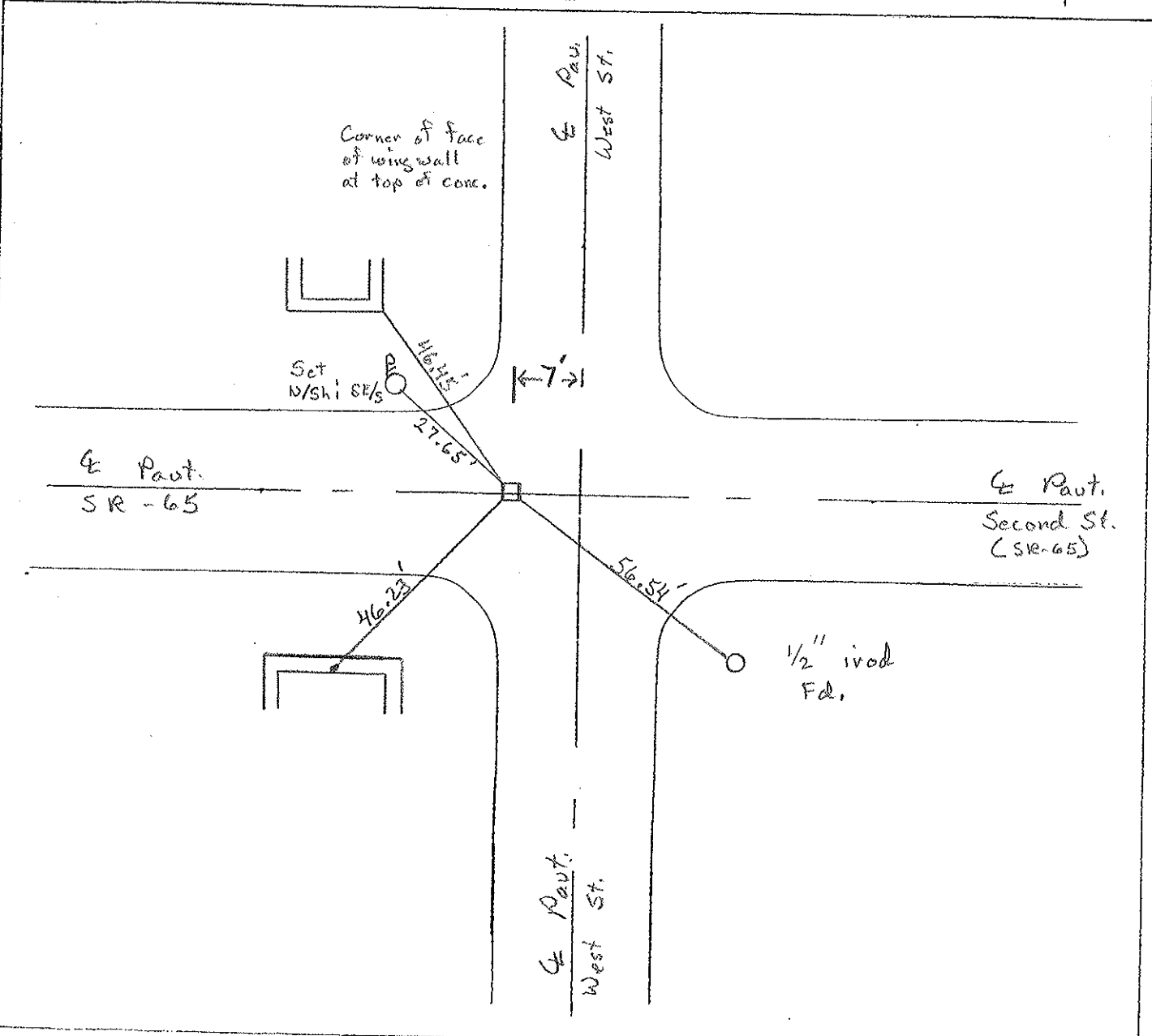
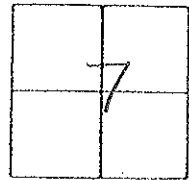
TYPE MONUMENT Mon Box

ON SURFACE - ~~BELOW~~ Surface

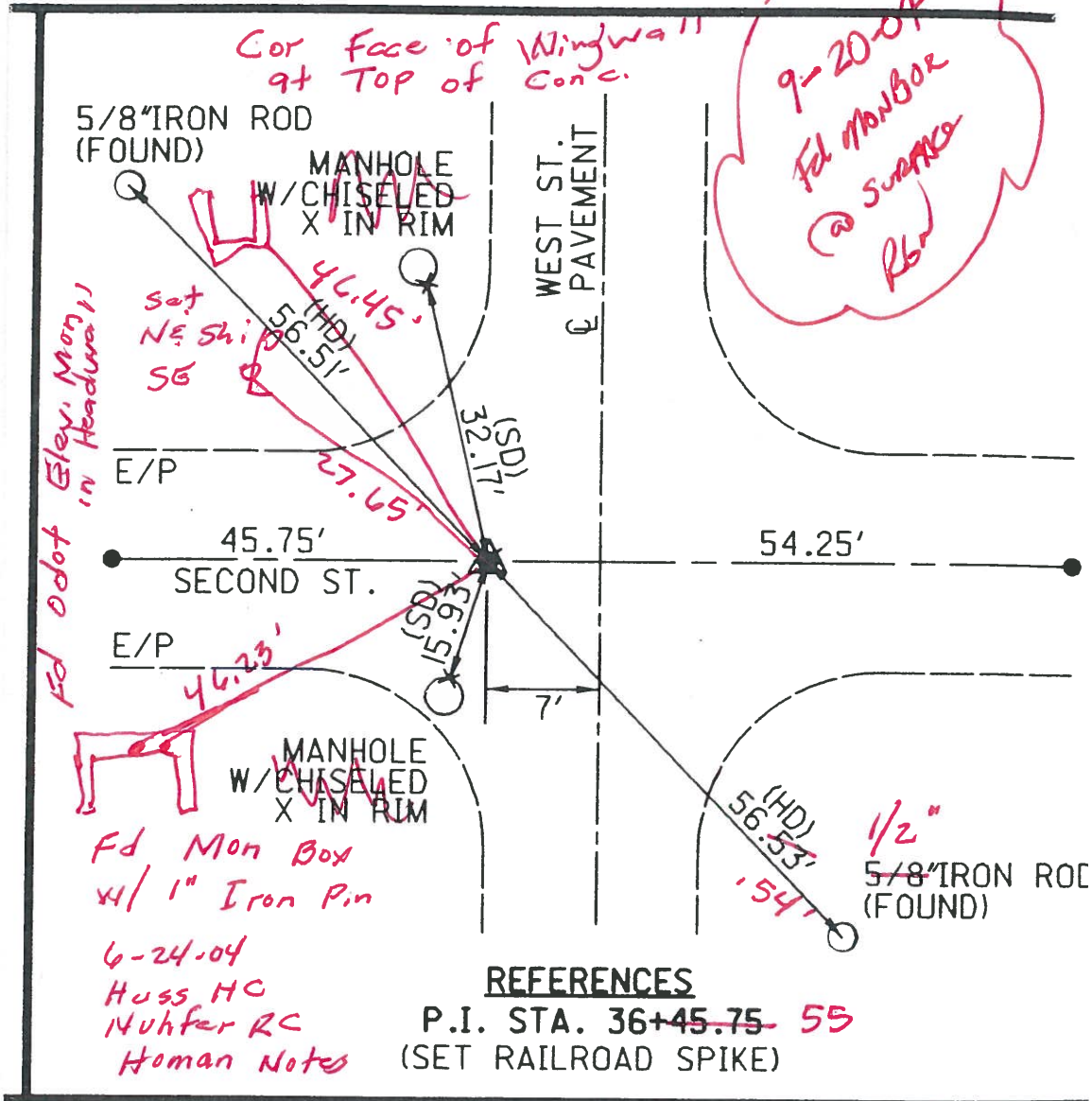
~~TO~~ - PAVT - ~~PAVT~~ E Paut.

TO EDGE PAVEMENT

S.L.M. 36+55



1-Cib



(139)

(138)