

O.D.O.T. DISTRICT 2 SURVEY OFFICE (USE ONLY)

PERSONNEL

REFERENCE NO. 1 D

SHEET 8 OF 40

NOTES RHOADES

DATE 3/29/22

ROUTE SR 65

H.C. NIESE

WEATHER CLEAR

COUNTY WOOD

R.C. KETNER
AUBLE, O'DONNELL

TEMP. 27°

TOWNSHIP GRAND RAPIDS

DWG BY RHOADES PID 95796

SECTION 7

T 5 N R 9 E

TYPE MONUMENT MAG/WASHER

ON SURFACE - ~~BELOW~~ ON

OFFSET Q PAVEMENT ON LT : RT

- TO - EDGE PAVEMENT

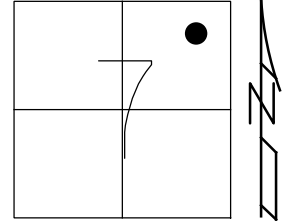
STATION: 42+24.3

HORZ.DATUM: NAD83 2011

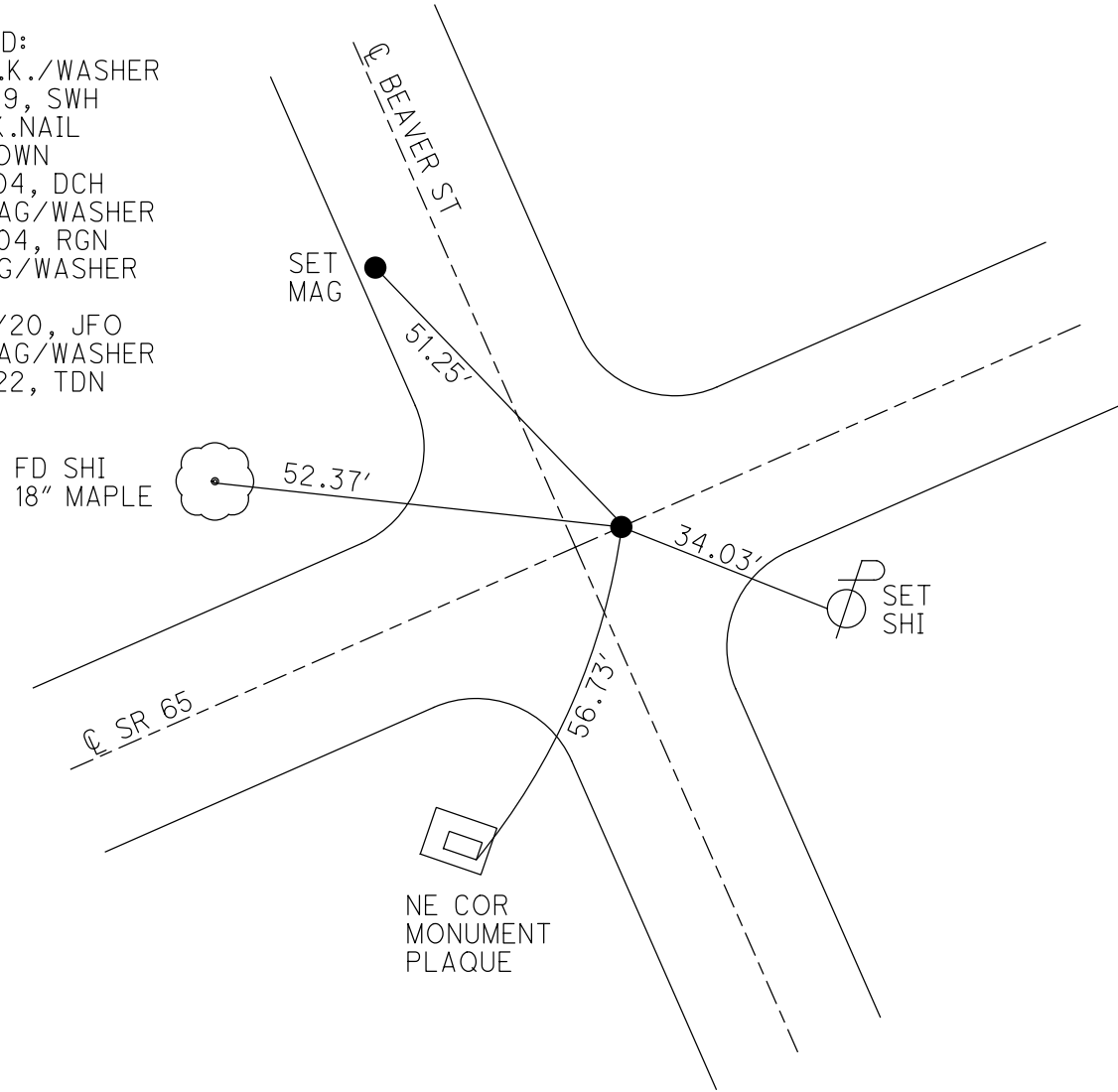
GEOID: NAVD88 2018

GRID: NORTHING: 638514.780

EASTING: 1593246.624



RECORD:
SET P.K./WASHER
11-21-89, SWH
FD P.K.NAIL
1.5" DOWN
6/17/04, DCH
SET MAG/WASHER
9-20-04, RGN
FD MAG/WASHER
REFD1
10/28/20, JFO
SET MAG/WASHER
10/4/22, TDN



O.D.O.T. DISTRICT 2 SURVEY OFFICE (USE ONLY)

PERSONNEL _____

REFERENCE NO. 1 D

SHEET 8 OF 16

NOTES HOMAN

DATE 6/17/04

ROUTE SR 65

H.C. HUSS

WEATHER CLOUDY

COUNTY WOOD

R.C. NUHFER

TEMP. 80° F

TOWNSHIP GRAND RAPIDS

SECTION 7

DWG BY AUBLE

PID _____

T 5 N R 9 E

TYPE MONUMENT P.K.NAIL

~~ON SURFACE~~ - BELOW 1.5"

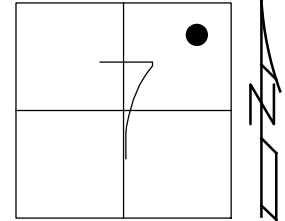
OFFSET ☉ PAVEMENT ON LT : RT

- TO - EDGE PAVEMENT

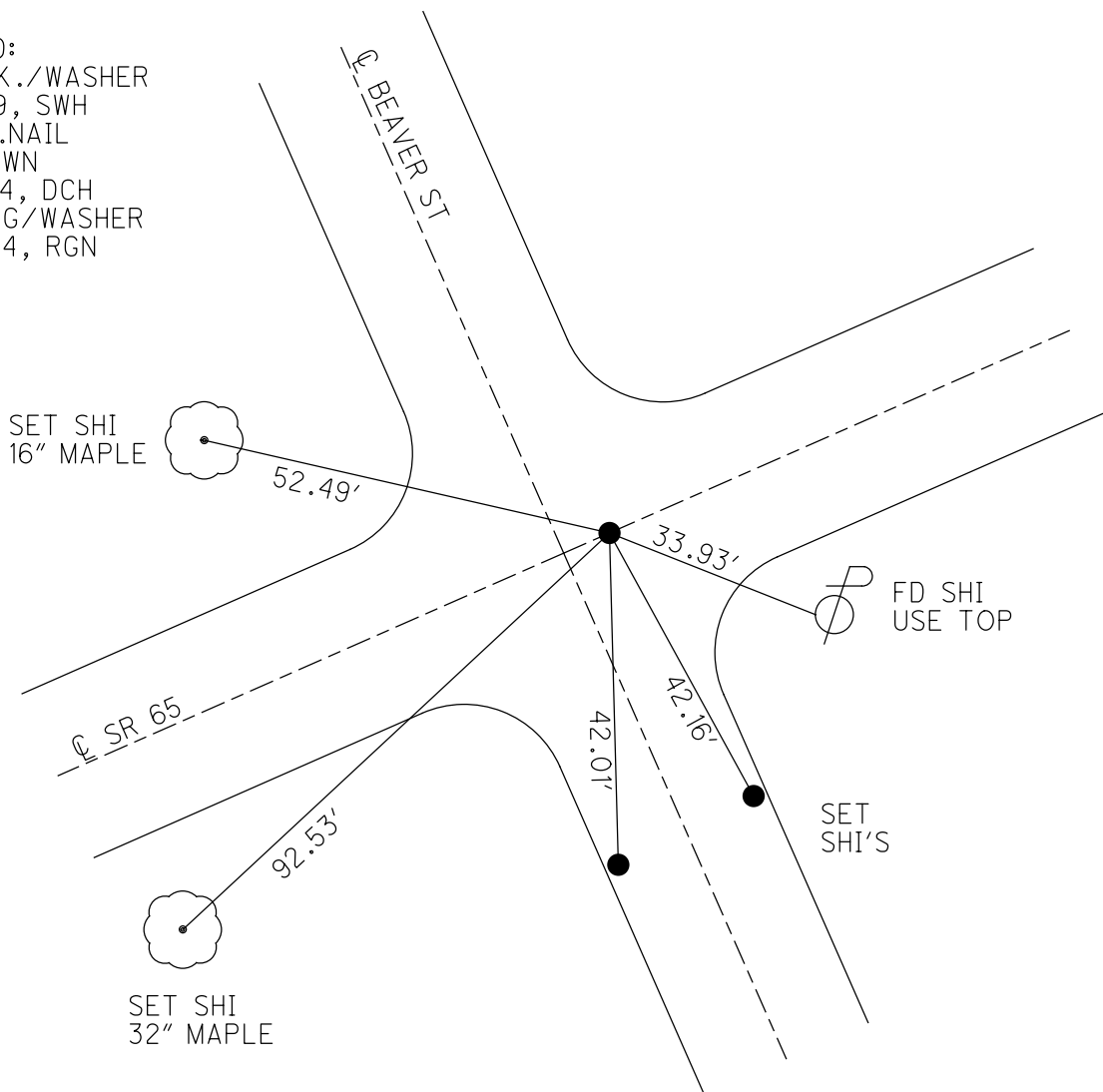
STATION: 42+31

HORIZ.DATUM: - GEOID: -

GRID: NORTHING: - EASTING: -



RECORD:
 SET P.K./WASHER
 11-21-89, SWH
 FD P.K.NAIL
 1.5" DOWN
 6/17/04, DCH
 SET MAG/WASHER
 9-20-04, RGN



O.D.O.T. DISTRICT 2 SURVEY OFFICE

PERSONNEL

REFERENCE NO. 1-D

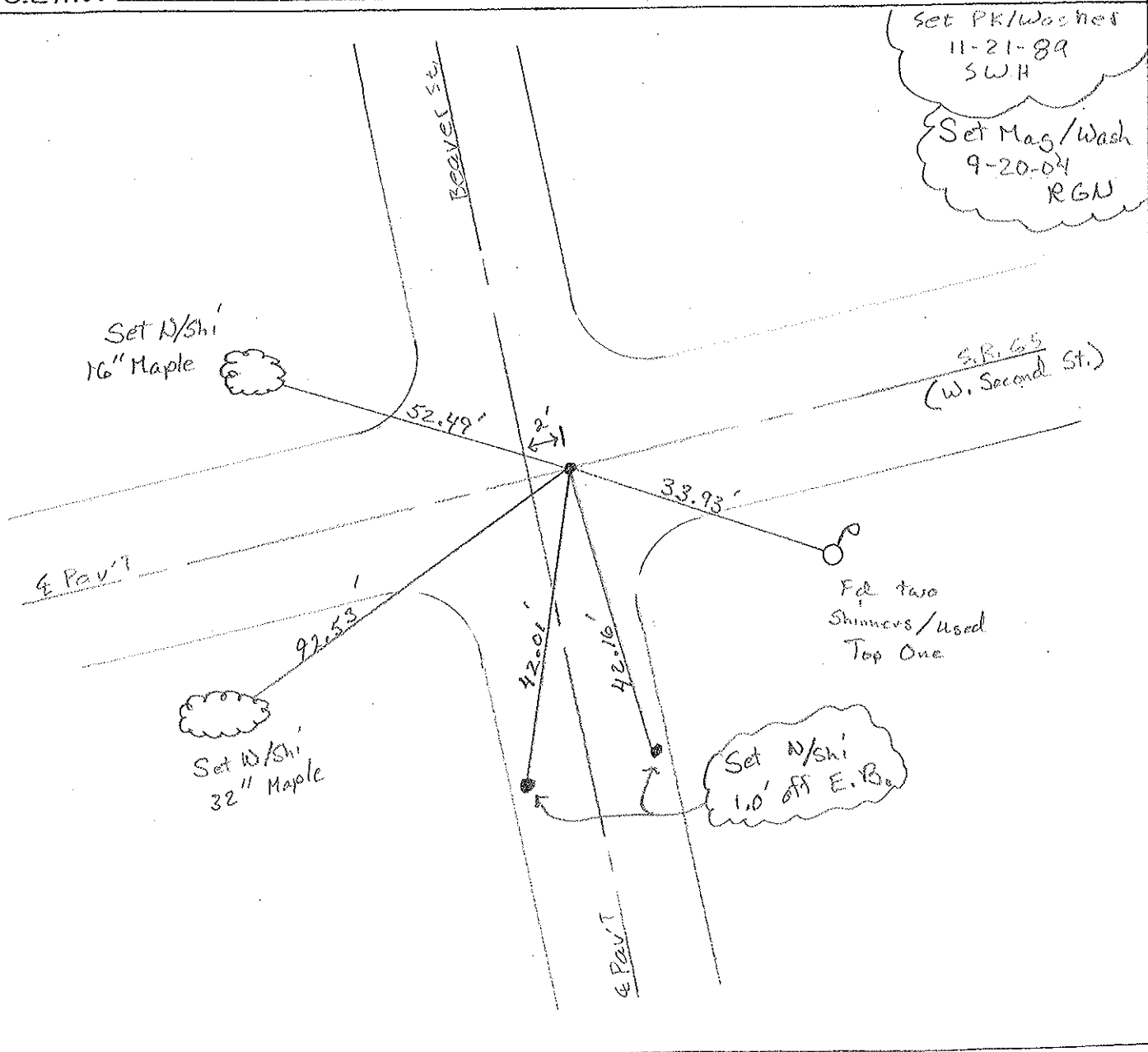
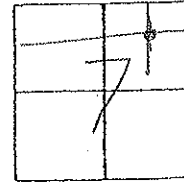
SHEET 6 OF 49

NOTES Huss
 H.C. Duane
 R.C. Kyle

DATE 6-17-04
 WEATHER Cl dy
 TEMP. +80°F

ROUTE S.R. 65
 COUNTY Wood
 TOWNSHIP Grand Rapids
 SECTION 7
 T5 N R 9 E

TYPE MONUMENT PK/Nail
~~ON SURFACE~~ - (BELOW) 1.5" Below
~~TO~~ (E PAV T) - RIGHT ON E
TO EDGE PAVEMENT
 S.L.M. 42+31



O.D.O.T. DISTRICT 2 SURVEY OFFICE

PERSONNEL

REFERENCE NO. 1-D

SHEET 2 OF 12

NOTES HOFFMAN

H.C. LOHRKE

DATE 9-7-89

ROUTE SR 65

R.C. BARNHISEL

WEATHER CLEAR

COUNTY WOOD

TEMP. 85°

TOWNSHIP GRAND RAPIDS

SECTION 7

T 5 N R 9 E

TYPE MONUMENT P.K. NAIL - BY OTHERS

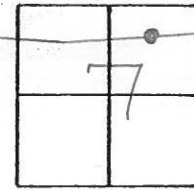
ON SURFACE - BELOW YES

Set P.K. NAIL
11-21-89
SWH

~~LEFT - & PAV'T. - RIGHT~~ YES

TO EDGE PAVEMENT

S.L.M. 42+26



ORIGIN UNKNOWN

