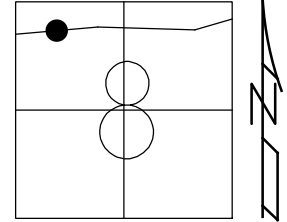


O.D.O.T. DISTRICT 2 SURVEY OFFICE (USE ONLY)

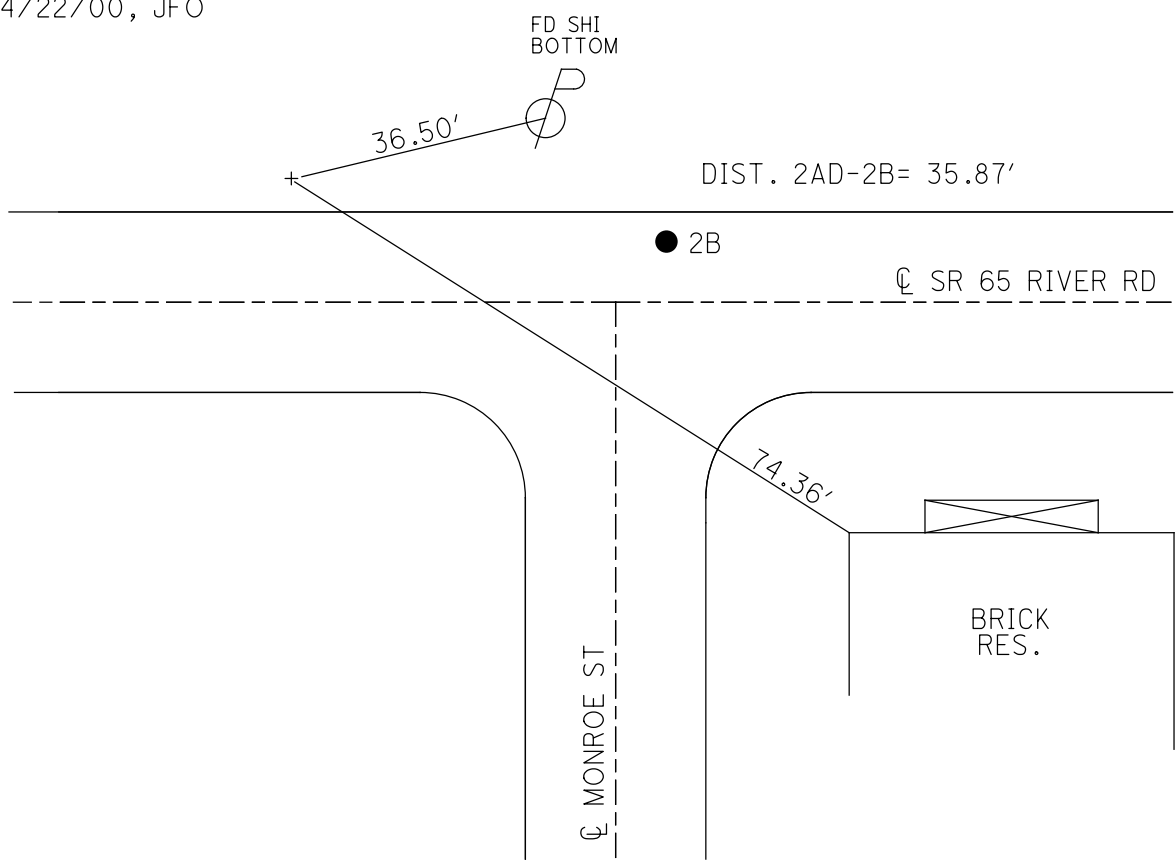
PERSONNEL _____ REFERENCE NO. 2 AD SHEET 14 OF 40
 NOTES RHOADES DATE 4/22/20 ROUTE SR 65
 H.C. O'DONNELL WEATHER CLOUDY COUNTY WOOD
 R.C. RHOADES TEMP. 39° TOWNSHIP GRAND RAPIDS
 SECTION 8
 DWG BY RHOADES PID 95796 T 5 N R 9 E

TYPE MONUMENT X-ING TIES
 ON SURFACE - ~~BELOW~~ ON
 OFFSET C PAVEMENT 12.5' LT : ~~RT~~
1' LT TO LT EDGE PAVEMENT
 STATION: 60+93.68



HORZ.DATUM: NAD83 2011 GEOID: NAVD88 2018
 GRID: NORTHING: 639259.664 EASTING: 1594670.539

RECORD:
 FD "+" CUT IN OLD
 CONCRETE PVMT
 5" DOWN
 9/7/89, CL
 FD X-ING TIES
 REFAD2
 4/22/00, JFO



O.D.O.T. DISTRICT 2 SURVEY OFFICE

PERSONNEL

REFERENCE NO. 2-B

SHEET 6 OF 12

NOTES HOFFMAN

H.C. LOEHRKE

DATE 9-7-89

ROUTE SR 65

R.G. BARNHISEL

WEATHER CLEAR

COUNTY WOOD

TEMP. 88°

TOWNSHIP Grand Rapids

SECTION 8

T5 NR 9 E

TYPE MONUMENT "A" = P.K. Nail

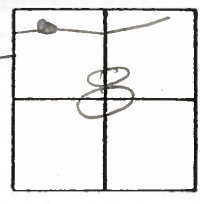
Set P.K./WASHER
11-21-89
SWH

ON SURFACE - BELOW YES

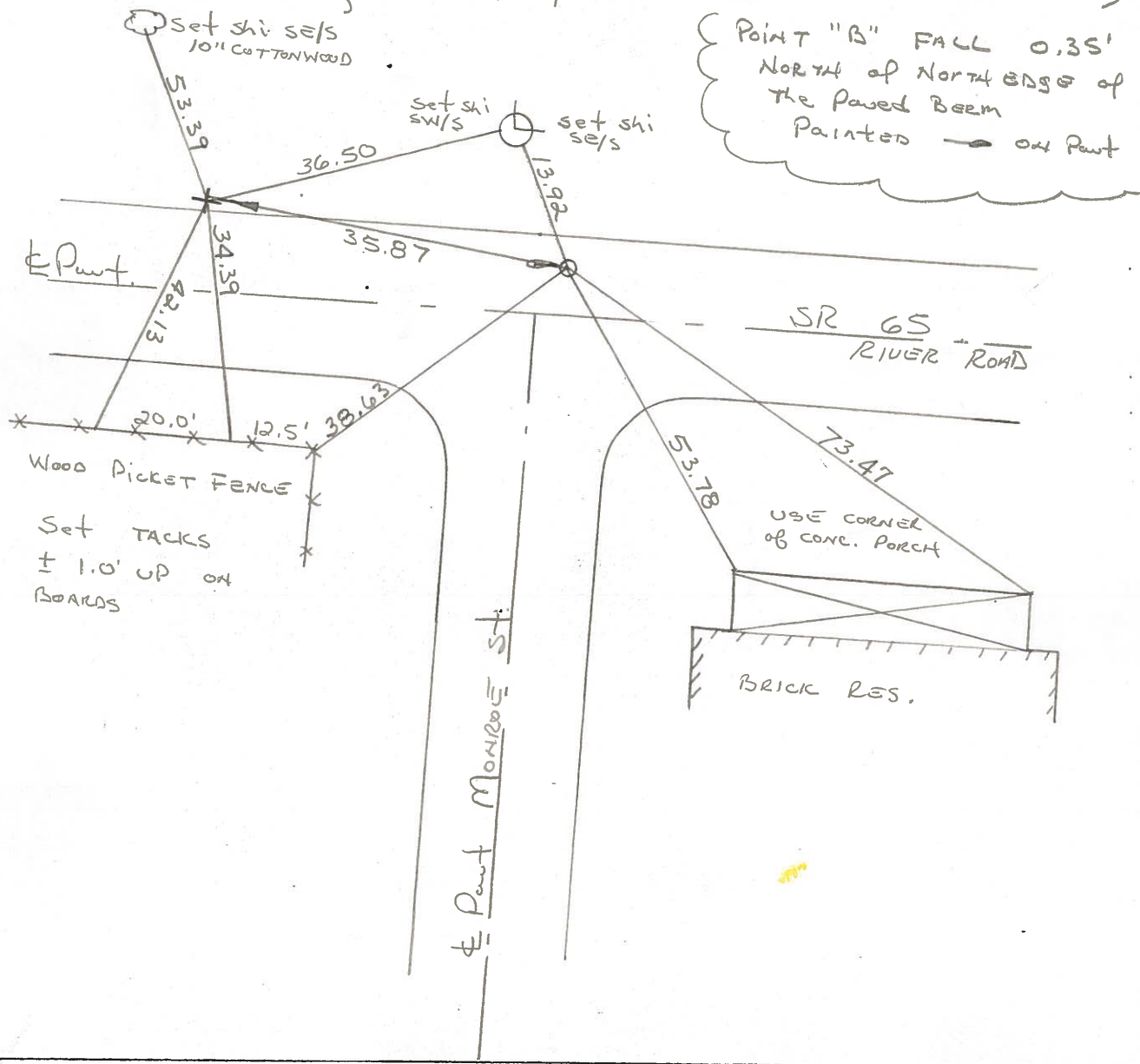
LEFT - PAV'T. - RIGHT 6.2

4.1 TO LT. EDGE PAVEMENT 1.8' EAST & MONROE

S.L.M. 61+33



"B" = "+" FOUND CUT IN OLD CONCRETE PAVEMENT (P.I. $\Delta = 21^\circ 56' R$ RECORD)
5" BELOW SURFACE; 12.5' LT. of \pm Pav't SR 65



Point "B" FALL 0.35'
Normal of North Edge of
the Paved Beam
Painted \rightarrow on Pav't

Wood Picket Fence
Set TACKS
 \pm 1.0' UP ON
BOARDS

USE CORNER
of CONC. PORCH
BRICK RES.

County Wood S.R. 65

Date 12-9-81

Township Grand Rapids

Weather Cloudy

Section 8 @ Grand Rapids

Temp. + 30°

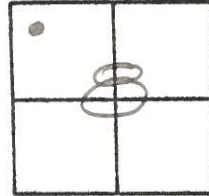
T5N, R9E

Personnel Hoffman

Lochrke

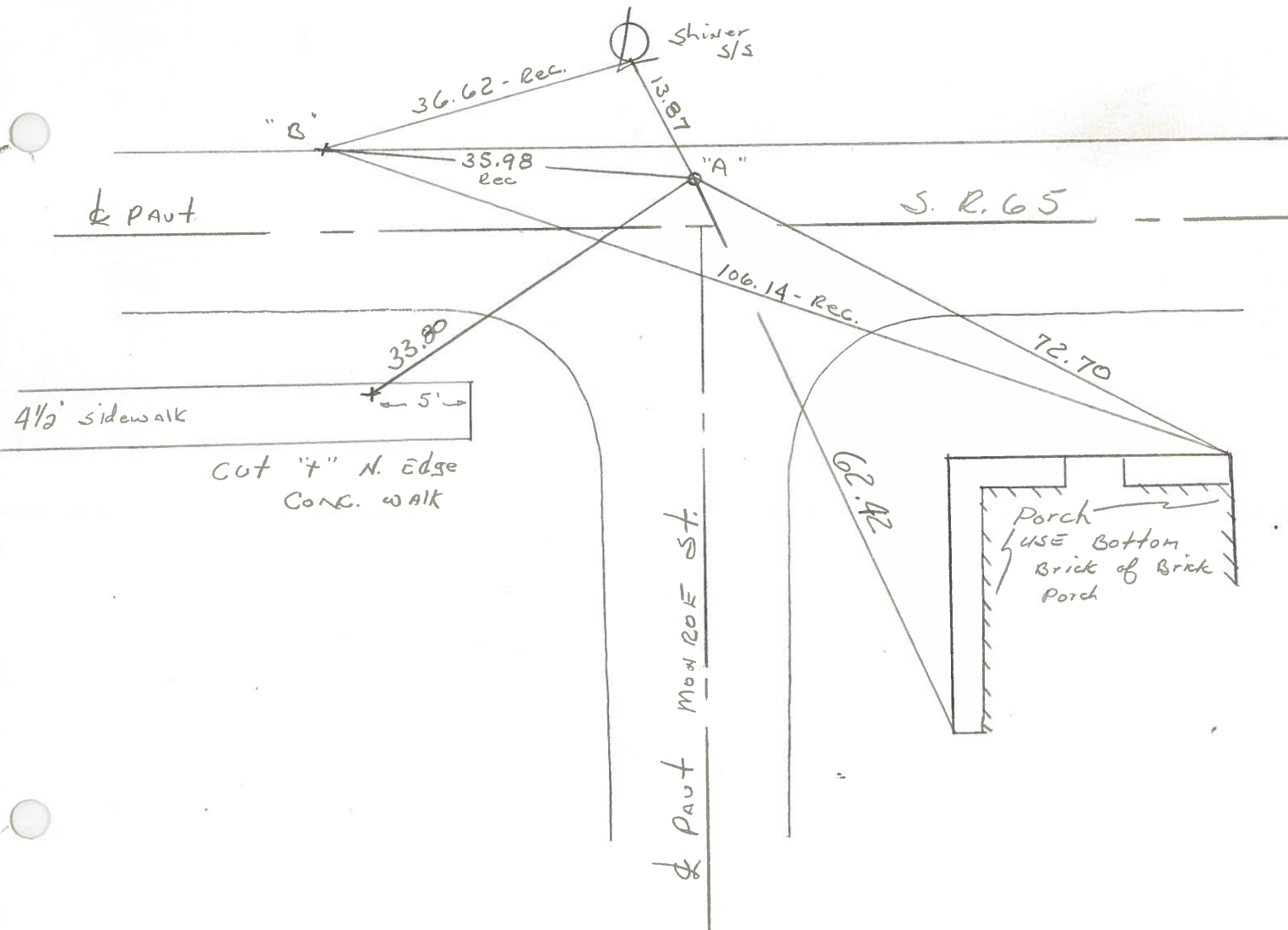
Householder

2-B



Pt. "A" Fd. P.K. @ SURFACE
N. of & PAUT SR 65
TO N.E.P.

Pt. "B" Could not FIND (did not set @ this DATE)
A SPK OR +, shown on 1973 notes.
P.I. Δ = 210-56' RT. -Rec.



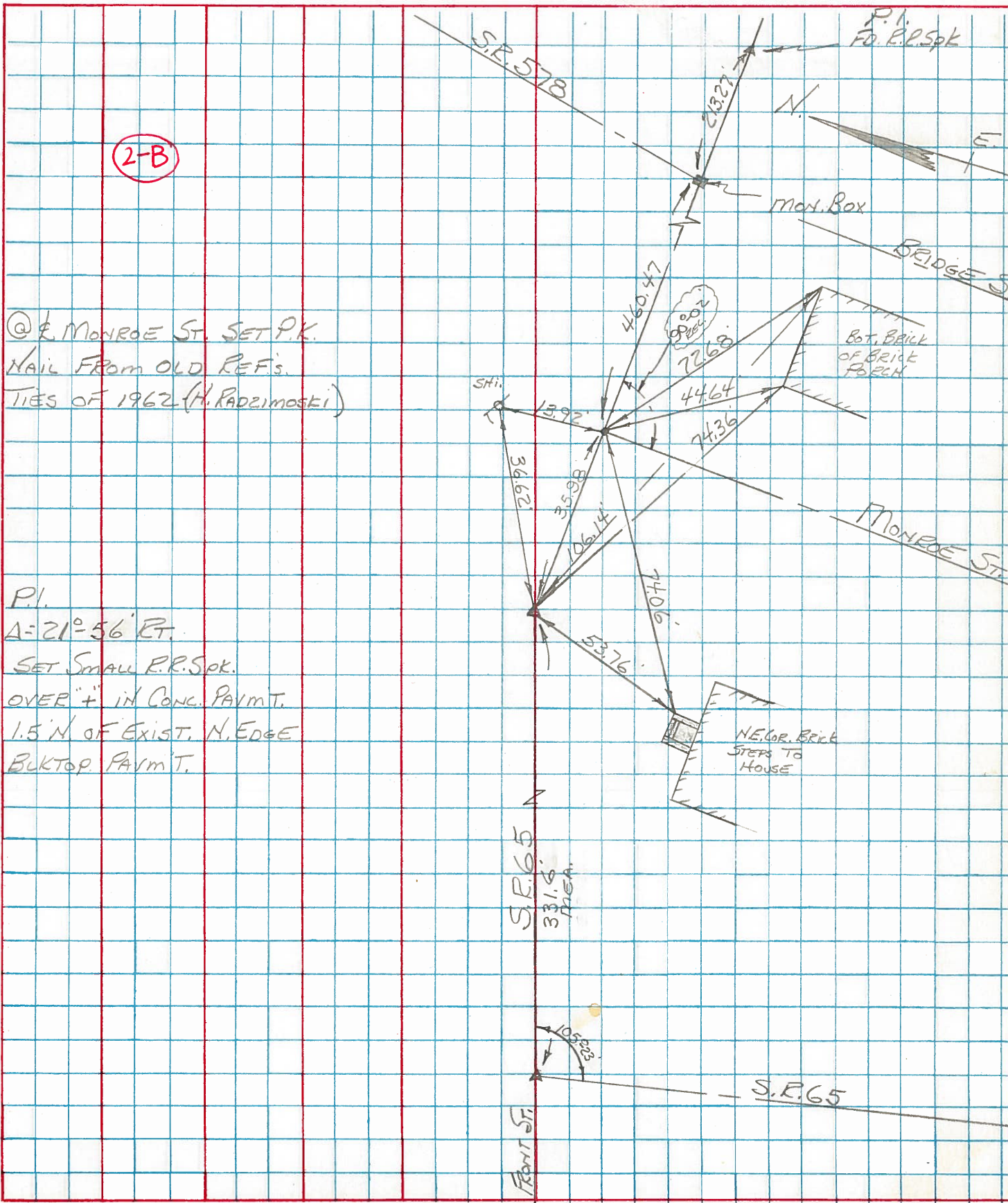
LD-5-(25M-2-59)

SHEET NO. _____

PERSONNEL	TITLE	PERSONNEL	TITLE
BURNSIDE		BAGDONAS	
SMITH			
POWERS			
KISOWSKI			

COUNTY WOOD DATE 7-17-73
 S. R. 65 WEATHER CLEAR
 SEC. GRAND RAPIDS TEMP. +75°

DESCRIPTION CENTERLINE CONTROL TIES JOB NO. _____



2-B
 @ E. MONROE ST. SET P.K.
 NAIL FROM OLD REF'S.
 TIES OF 1962 (H. PADZIMOSKI)

P.I.
 A = 21° 56' RT.
 SET SMALL P.R. SPK.
 OVER "+" IN CONC. PAVMT.
 1.5' N OF EXIST. N. EDGE
 BUKTOP PAVMT.

S.R. 65
 331.6
 AREA

FRONT ST.
 105.825
 5.225

S.R. 65