

O.D.O.T. DISTRICT 2 SURVEY OFFICE (USE ONLY)

PERSONNEL

REFERENCE NO. 3

SHEET 16 OF 40

NOTES RHOADES

DATE 3/29/22

ROUTE SR 65

H.C. NIESE

WEATHER CLEAR

COUNTY WOOD

R.C. KETNER

TEMP. 27°

TOWNSHIP GRAND RAPIDS

AUBLE, O'DONNELL

SECTION 8

DWG BY RHOADES PID 95796

T 5 N R 9 E

TYPE MONUMENT MAG SHANK

~~ON SURFACE~~ - BELOW 1"

OFFSET \odot PAVEMENT 1' ~~LT~~ : RT

- TO - EDGE PAVEMENT

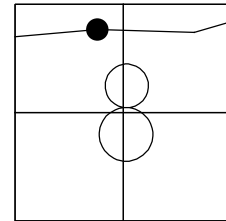
STATION: 65+90.32

HORIZ.DATUM: NAD83 2011

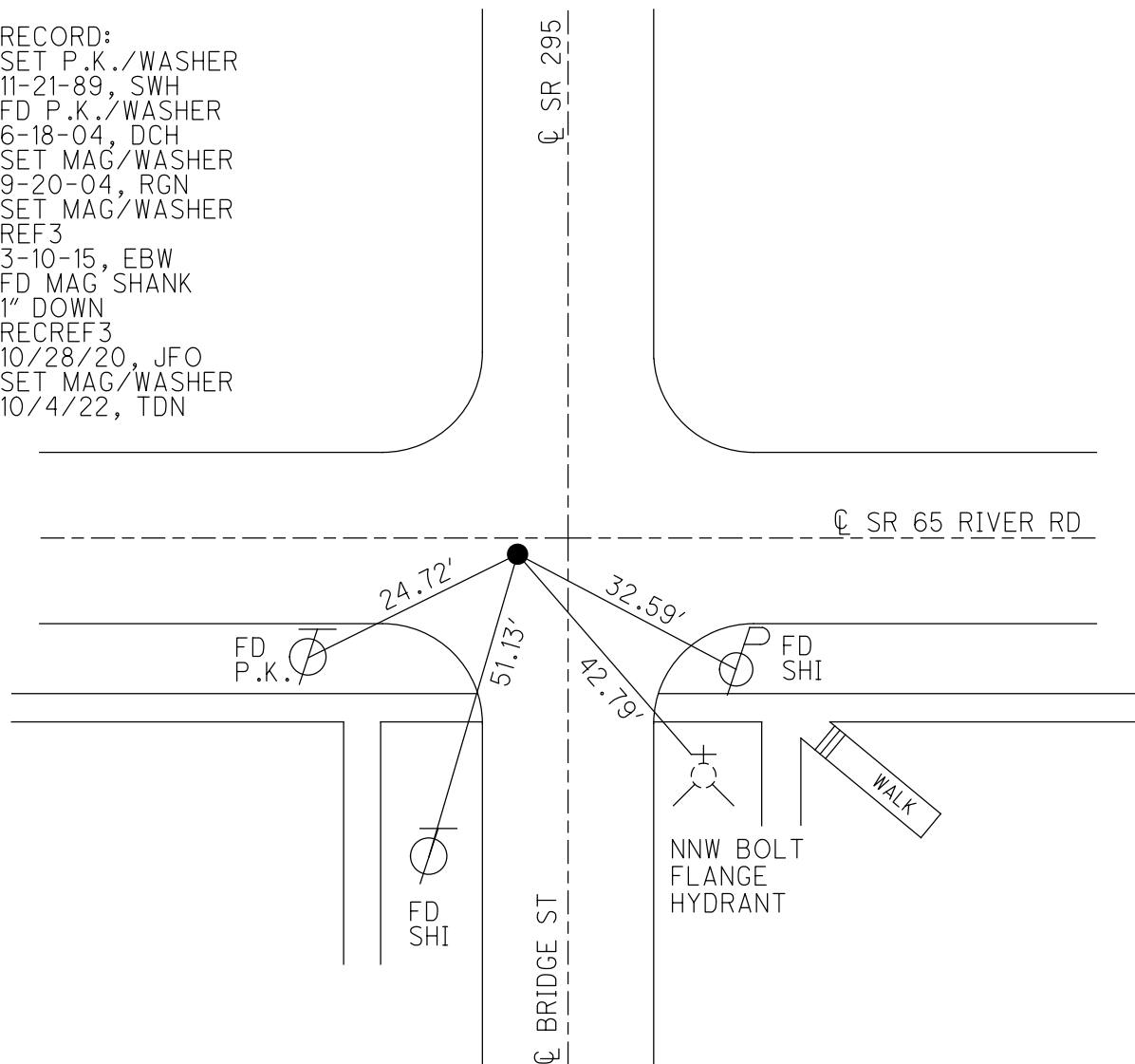
GEOID: NAVD88 2018

GRID: NORTHING: 639202.156

EASTING: 1595163.575



RECORD:
 SET P.K./WASHER
 11-21-89, SWH
 FD P.K./WASHER
 6-18-04, DCH
 SET MAG/WASHER
 9-20-04, RGN
 SET MAG/WASHER
 REF3
 3-10-15, EBW
 FD MAG SHANK
 1" DOWN
 RECREF3
 10/28/20, JFO
 SET MAG/WASHER
 10/4/22, TDN



O.D.O.T. DISTRICT 2 SURVEY OFFICE (USE ONLY)

PERSONNEL _____

REFERENCE NO. 3

SHEET 8 OF 9

NOTES WESTFALL

DATE 3/10/15

ROUTE SR 65

H.C. HOMAN

WEATHER FAIR

COUNTY WOOD

R.C. LEU

TEMP. 40°

TOWNSHIP GRAND RAPIDS

DWG BY RHOADES

PID _____

SECTION 8

T 5 N R 9 E

TYPE MONUMENT MAG/WASHER

ON SURFACE - ~~BELOW~~ ON

OFFSET Q PAVEMENT 1' ~~LT~~ : RT

- TO - EDGE PAVEMENT

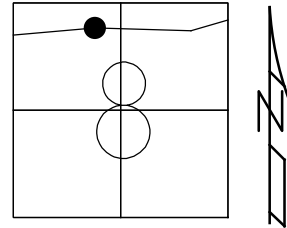
STATION: 65+96

HORZ. DATUM: _____

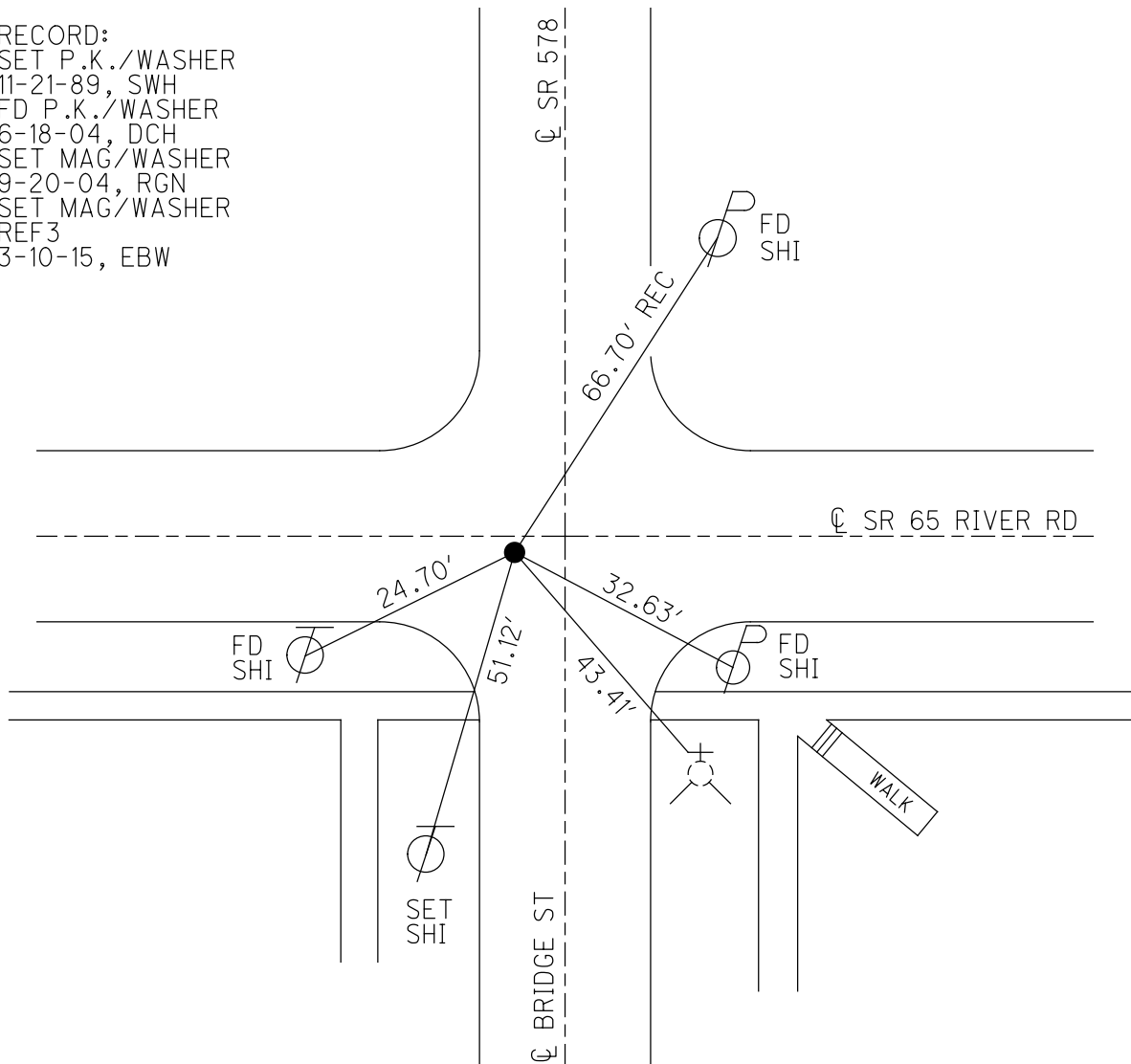
GEOID: _____

GRID: NORTHING: 639202.156

EASTING: 1595163.575



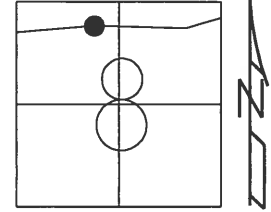
RECORD:
 SET P.K./WASHER
 11-21-89, SWH
 FD P.K./WASHER
 6-18-04, DCH
 SET MAG/WASHER
 9-20-04, RGN
 SET MAG/WASHER
 REF3
 3-10-15, EBW



O.D.O.T. DISTRICT 2 SURVEY OFFICE (USE ONLY)

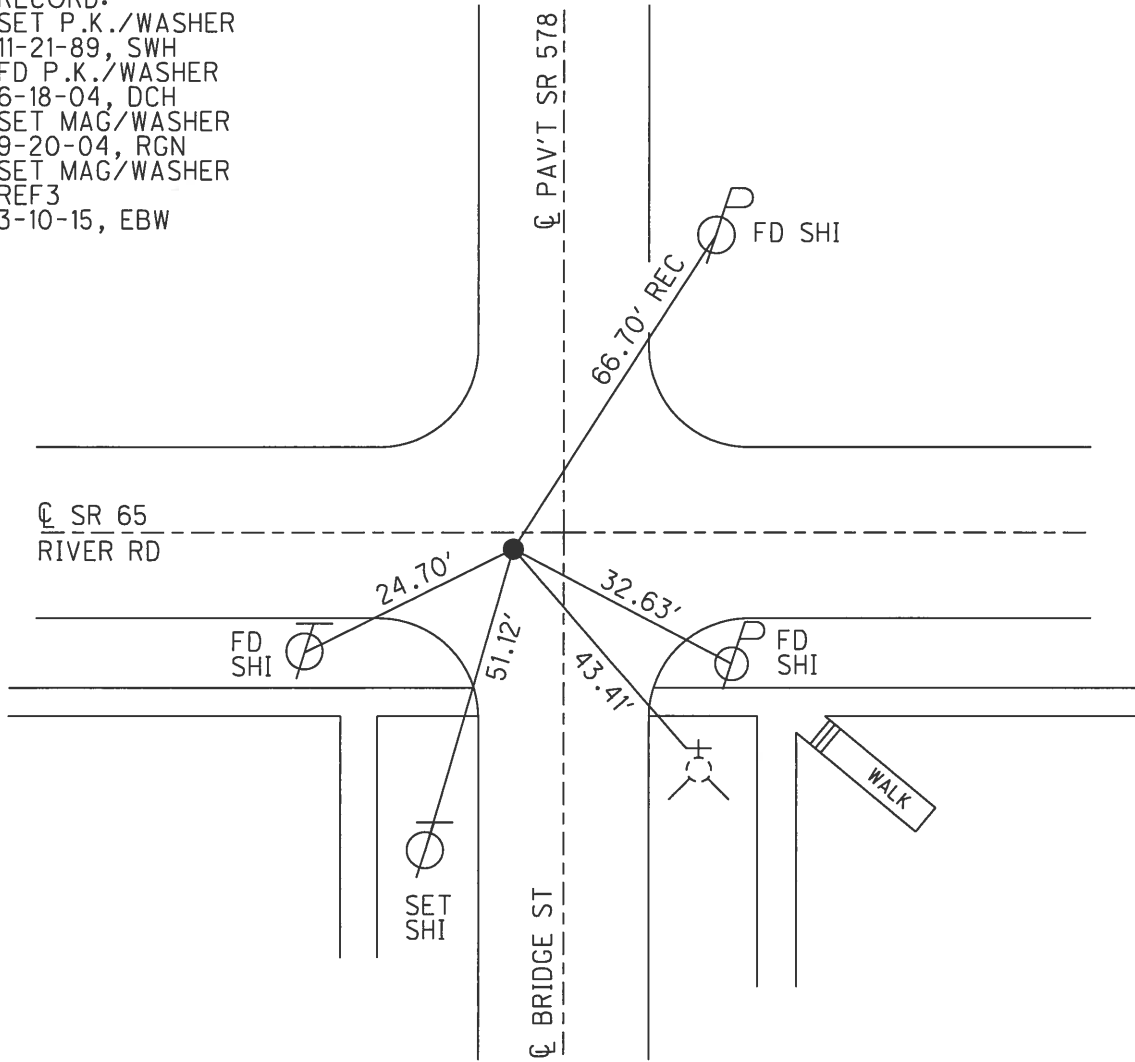
PERSONNEL _____ REFERENCE NO. 3 SHEET 2 OF 3
 NOTES WESTFALL DATE 3/10/15 ROUTE SR 65
 H.C. HOMAN WEATHER FAIR COUNTY WOOD
 R.C. LEU TEMP. 40° TOWNSHIP GRAND RAPIDS
 SECTION 8
 T 5 N R 9 E

TYPE MONUMENT MAG/WASHER
 ON SURFACE - ~~BELOW~~ ON _____
~~LEFT~~ - ☉ PAV'T - RIGHT 1'
 - TO - EDGE PAVEMENT
 S.L.M. 65+96



Grid: Northing: 639202.156 Easting: 1595163.575

RECORD:
 SET P.K./WASHER
 11-21-89, SWH
 FD P.K./WASHER
 6-18-04, DCH
 SET MAG/WASHER
 9-20-04, RGN
 SET MAG/WASHER
 REF3
 3-10-15, EBW



O.D.O.T. DISTRICT 2 SURVEY OFFICE

PERSONNEL _____

REFERENCE NO. 3

SHEET 11 OF 49

NOTES Huss

H.C. Homan

R.C. Adkins

DATE 6-18-04

WEATHER Cldy

TEMP. +78°F

ROUTE S.R. 165

COUNTY Wood

TOWNSHIP Grand Rapids

SECTION 8

T. 5 N. R. 9 E.

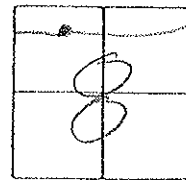
TYPE MONUMENT PK/W

ON SURFACE - ~~BELOW~~ Surface

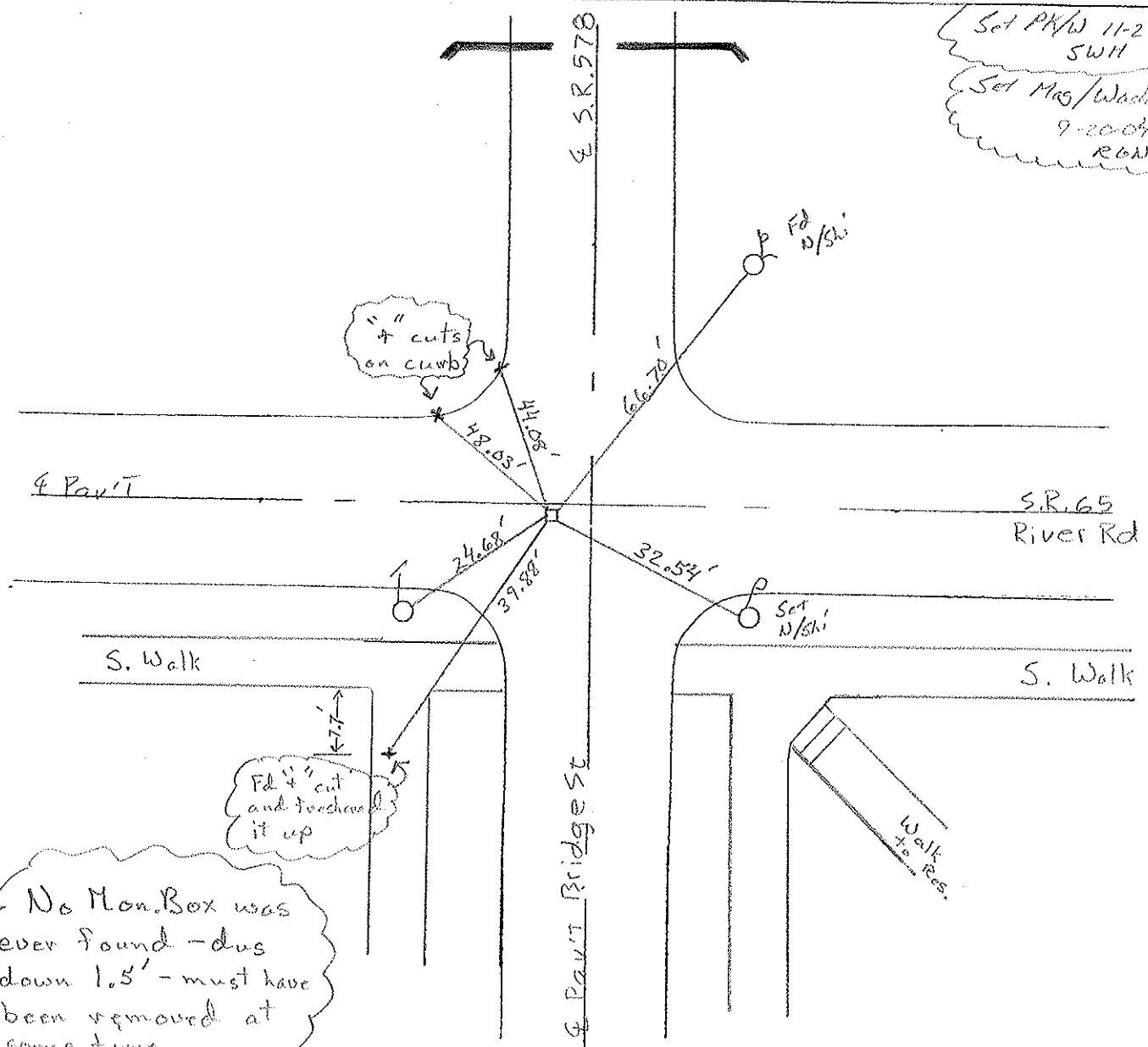
LEFT - ℄ PAV'T. RIGHT 1' RT.

TO EDGE PAVEMENT (6.4' West - of Bridge St.)

S.L.M. 65+96



Set PK/W 11-21-89
SWH
Set Mos/Washer
9-20-04
ROA



No Mon. Box was ever found - dug down 1.5' - must have been removed at some time

O.D.O.T. DISTRICT 2 SURVEY OFFICE

PERSONNEL _____

REFERENCE NO. 3

SHEET 7 OF 12

NOTES HOFFMAN

H.C. LOSHRKE

R.C. _____

DATE 9-11-89

WEATHER CLEAR

TEMP. 72°

ROUTE SR 65

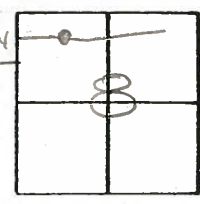
COUNTY WOOD

TOWNSHIP Grand Rapids

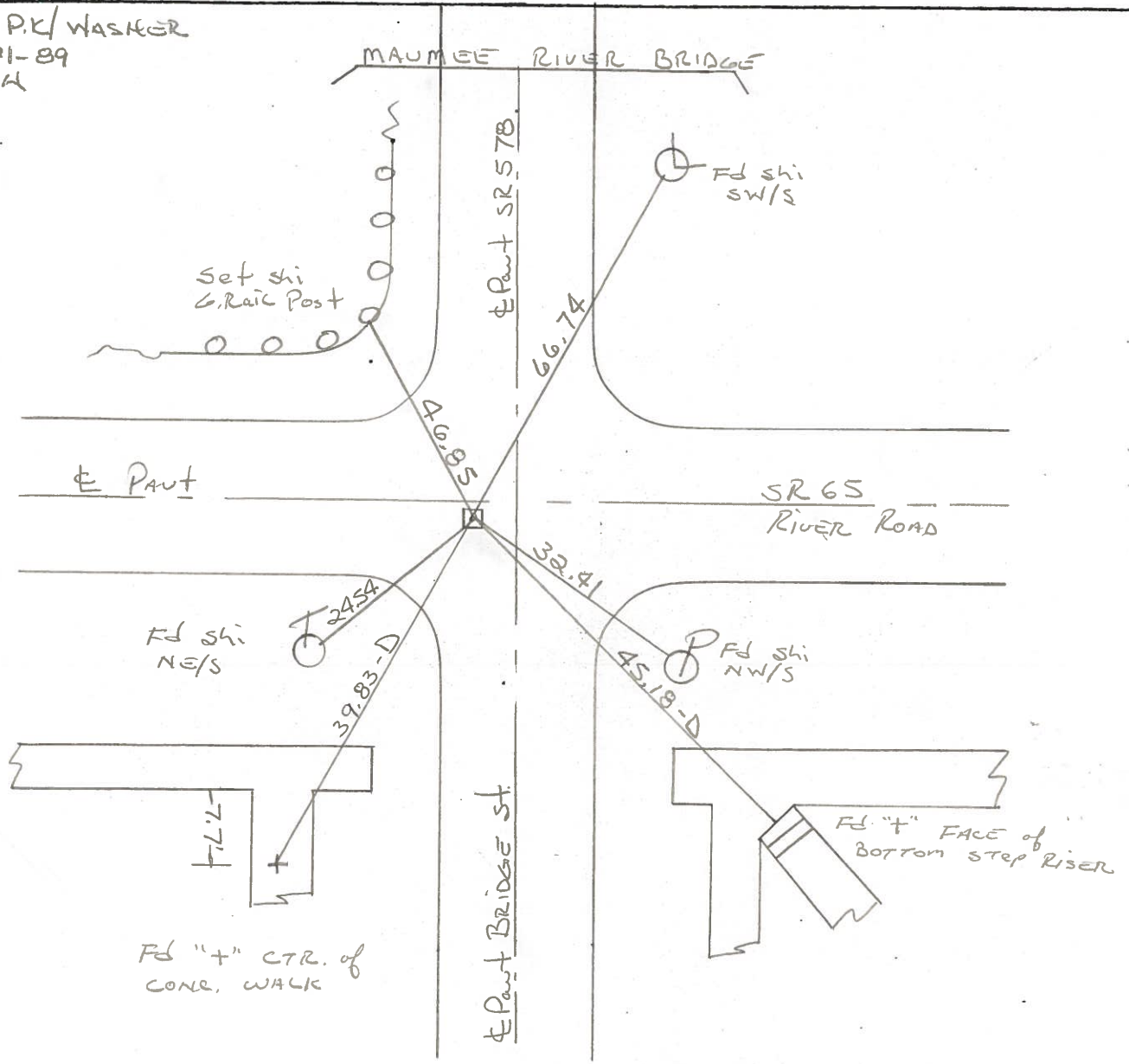
SECTION 8

T 5 N R 9 E

TYPE MONUMENT P.K. NAIL - HOLE OVER MONUMENT
 ON SURFACE - BELOW yes BOX (TO IRON PIN)
~~LEFT - & PAVT.~~ - RIGHT 1.4'
TO EDGE PAVEMENT 6.4' West of & Paut
 Bridge st.
 S.L.M. 65.92



Set P.K. WASKER
 11-21-89
 SWH



OD.O.T. DISTRICT 2 SURVEY OFFICE

SHEET 8 OF

County Wood S.R. 65

Date 12-9-81

Township Grand Rapids

Weather cloudy

Section 8 @ Grand Rapids

Temp. +30°

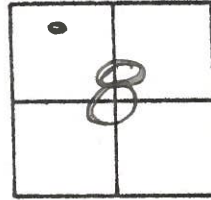
T5N, R9E

Personnel Hoffman

Loehrke

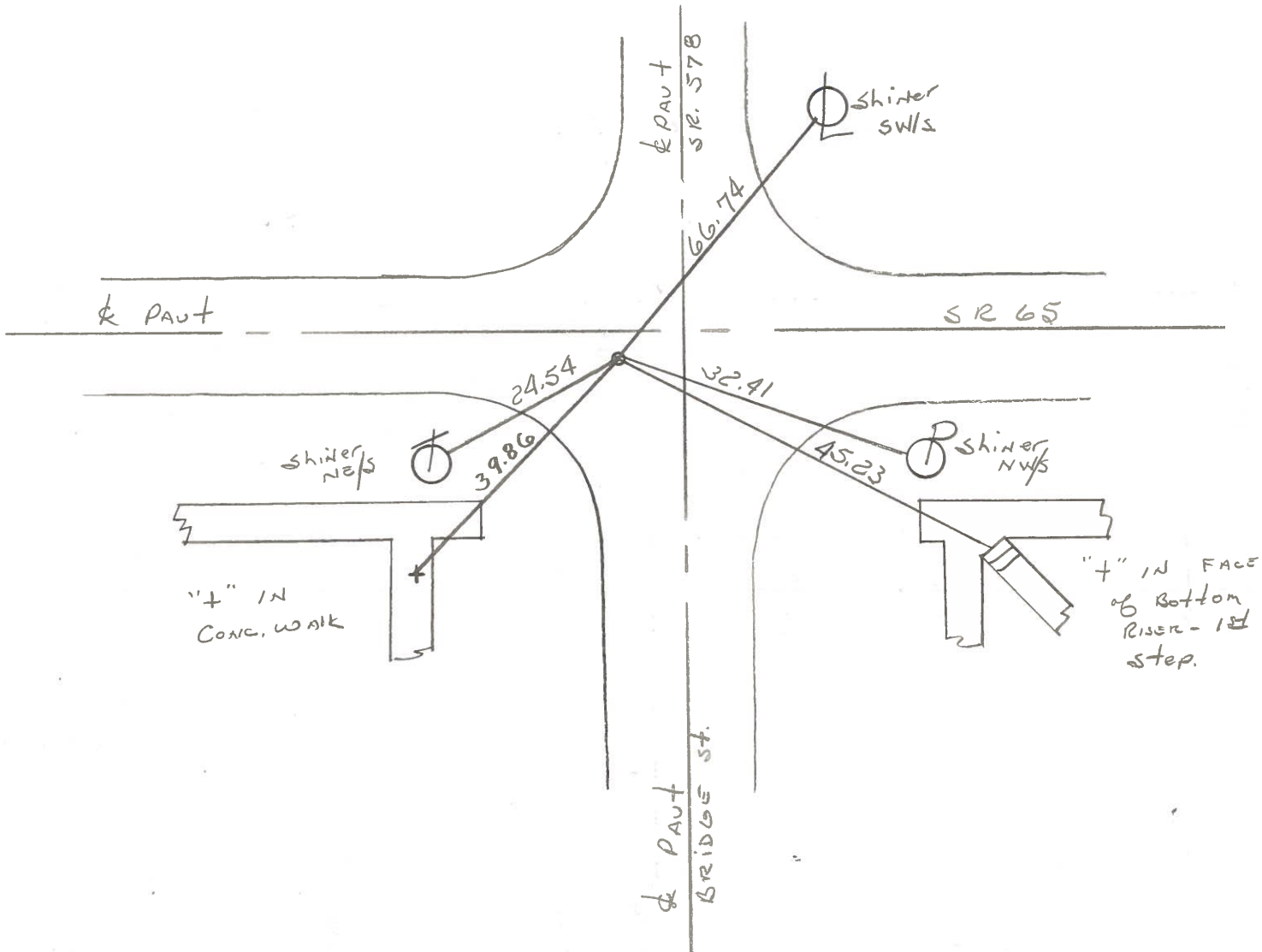
Householder

3



Fd P.K. @ surface (over mod. box)
1.4' S. of & PAUT S.R. 65
6.4' W. of & PAUT Bridge St. South

MAUMEE RIVER



O.D.O.T. DISTRICT 2 SURVEY OFFICE

SHEET _____ OF _____

County WOOD S.R. 65

Date 7-17-73

Township GRAND RAPIDS

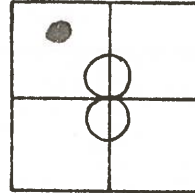
Weather CLEAR

Section 8

Temp. 82°

T5N, R9E

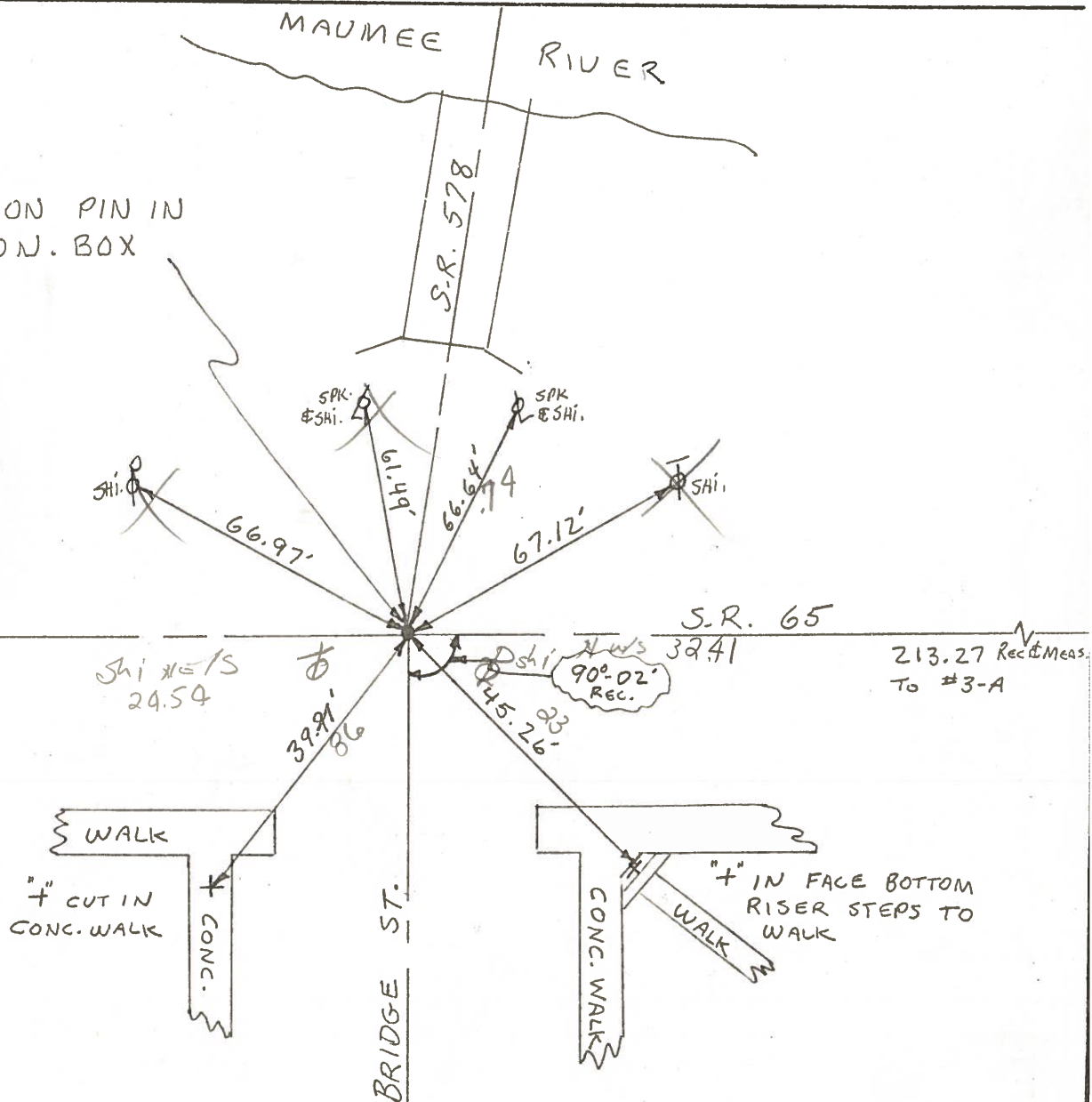
Personnel BURNSIDE
SMITH
BOWERS
KIJOWSKI
BAGDONAS



3

Fd PK

IRON PIN IN
MON. BOX



6.9 w of Bridge & add .02 to each meas.
 1.4 s of 65 &

O.D.O.T. DISTRICT 2 SURVEY OFFICE

SHEET _____ OF _____

County WOOD S.R. 65

Date 7-17-73

Township GRAND RAPIDS

Weather CLEAR

Section 8

Temp. 82°

T5N, R9E

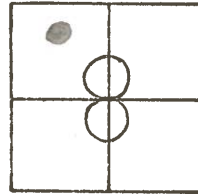
Personnel BURNSIDE

SMITH

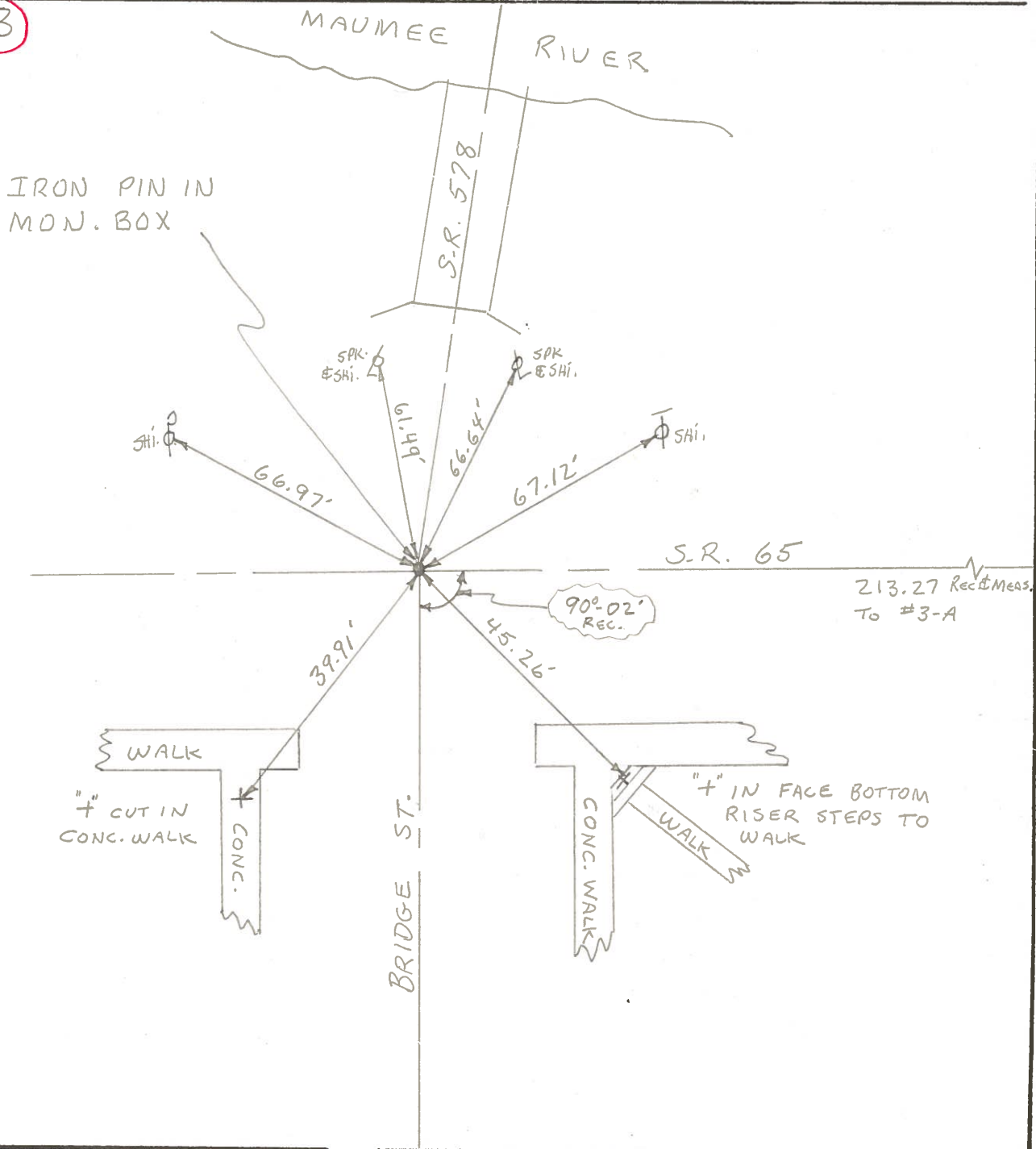
BOWERS

KIJOWSKI

BAGDONAS



3



PERSONNEL	TITLE	PERSONNEL	TITLE	COUNTY	DATE	WEATHER
Red Beach				LUCAS	Sept 68	
Newcombs				S. R. US 24		
Knape				SEC. 1.13		
Wise						TEMP.

DESCRIPTION _____ CONTROL POINTS _____ JOB NO. 02794

