

O.D.O.T. DISTRICT 2 SURVEY OFFICE (USE ONLY)

PERSONNEL

REFERENCE NO. 4 B

SHEET 24 OF 40

NOTES RHOADES

DATE 3/29/22

ROUTE SR 65

H.C. NIESE

WEATHER CLEAR

COUNTY WOOD

R.C. AUBLE

TEMP. 35°

TOWNSHIP GRAND RAPIDS

KETNER, O'DONNELL

SECTION 5

DWG BY RHOADES

PID 95796

T 5 N R 9 E

TYPE MONUMENT MAG/WASHER

ON SURFACE - ~~BELOW~~ ON

OFFSET 0.3' LT : ~~RT~~

9.9' TO RT EDGE PAVEMENT

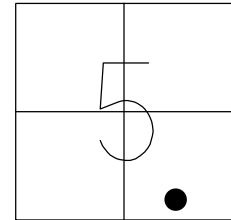
STATION: 102+02.20

HORIZ.DATUM: NAD83 2011

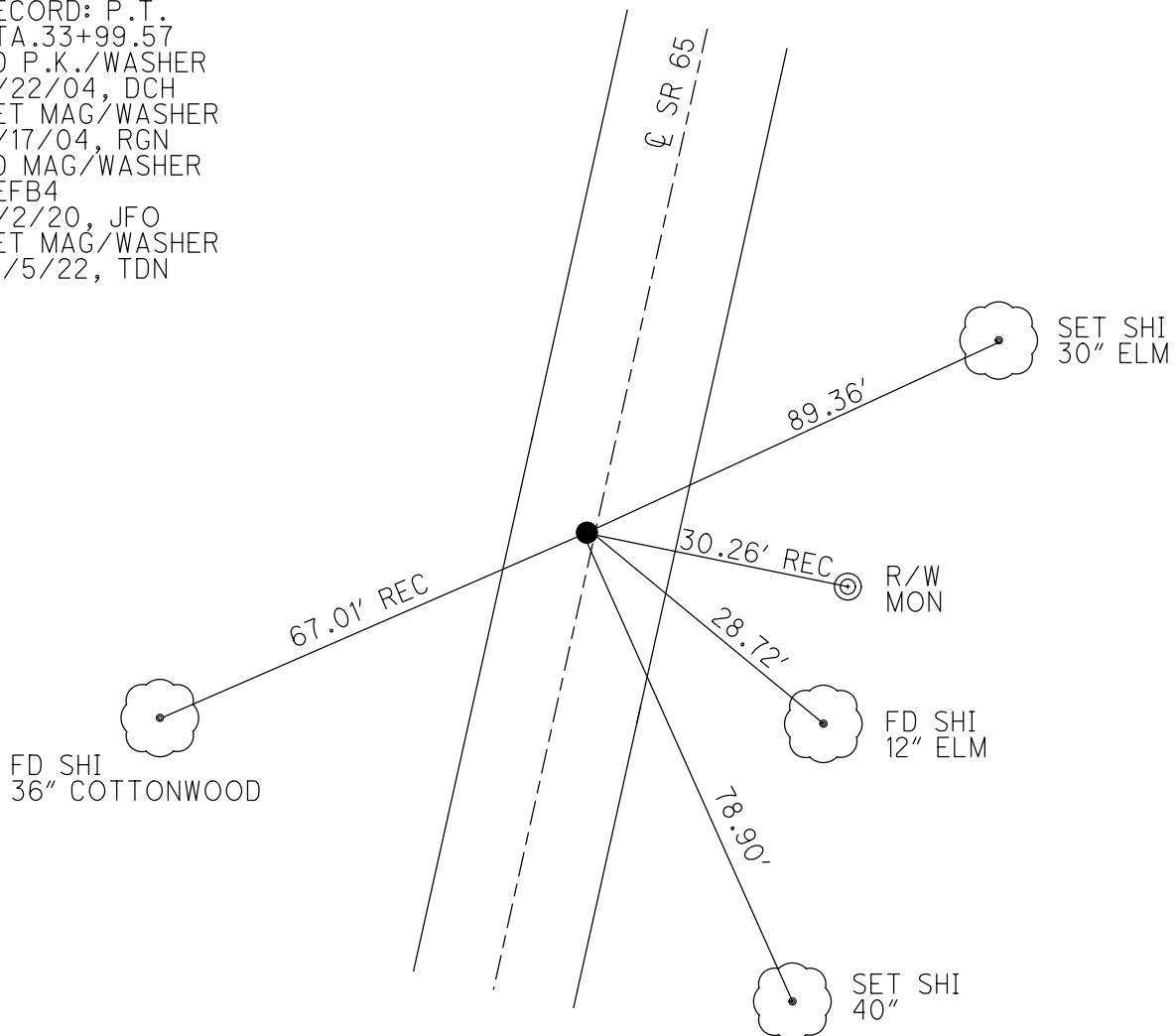
GEOID: NAVD88 2018

GRID: NORTHING: 640247.369

EASTING: 1598253.411



RECORD: P.T.  
 STA.33+99.57  
 FD P.K./WASHER  
 6/22/04, DCH  
 SET MAG/WASHER  
 9/17/04, RGN  
 FD MAG/WASHER  
 REFB4  
 11/2/20, JFO  
 SET MAG/WASHER  
 10/5/22, TDN



# O.D.O.T. DISTRICT 2 SURVEY OFFICE

PERSONNEL \_\_\_\_\_

REFERENCE NO. 5

SHEET 18 OF 49

NOTES Nahfor

H.C. Homan

R.C. Huss

DATE 6-22-04

WEATHER Sun.

TEMP. 73°F

ROUTE S.R. 65

COUNTY Wood

TOWNSHIP Grand Rapids

SECTION 5

T5 N R 9 E

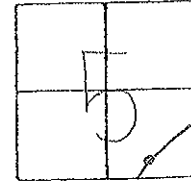
TYPE MONUMENT Pt(A), Pt(B) PK/W - both

~~ON SURFACE~~ ~~surface~~ surface - both

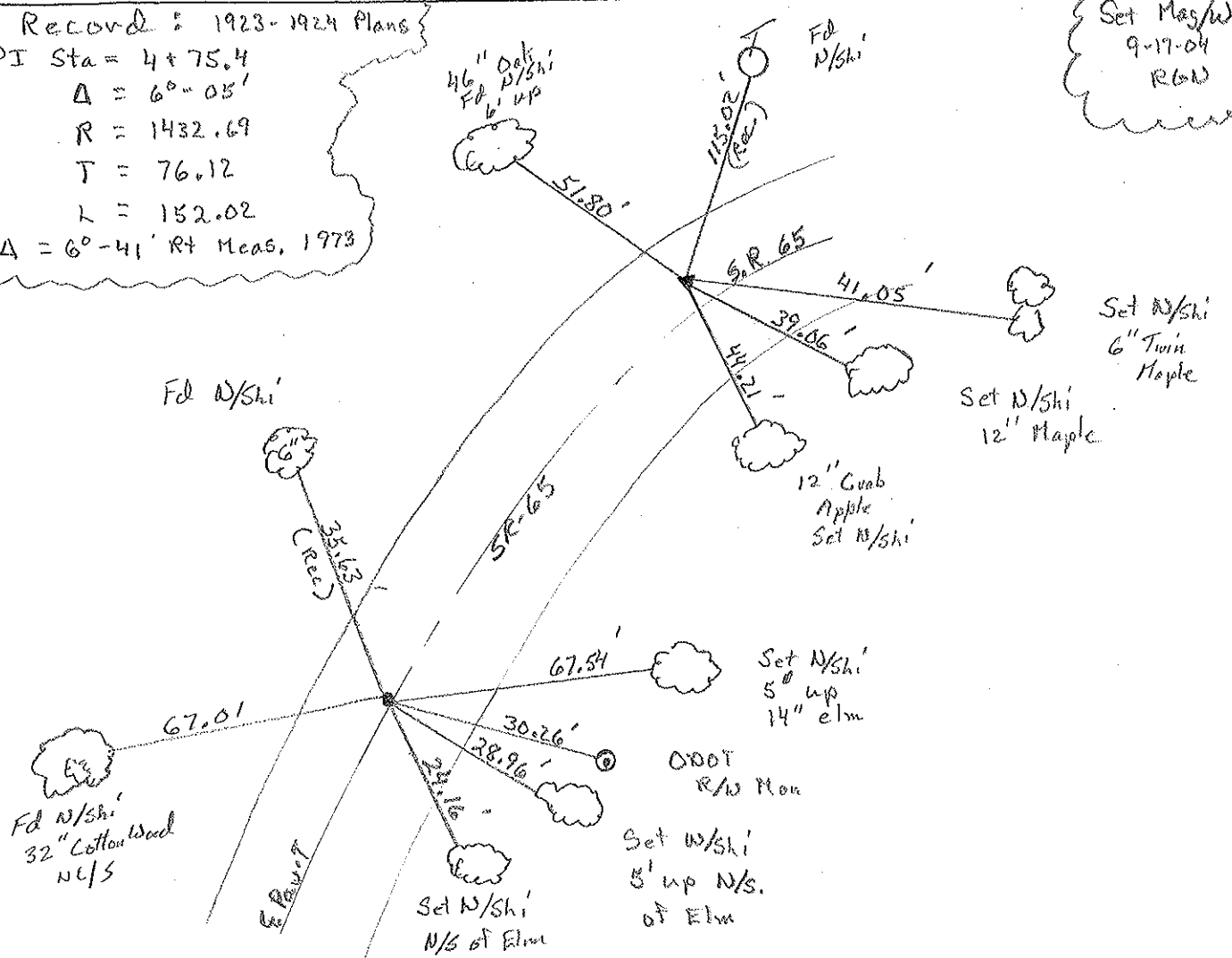
LEFT - PAV T. - RIGHT Pt(A) - 4.0 Lt. / Pt(B) 0.3' Lt

9.9' TO RT. EDGE PAVEMENT

S.L.M. Pt(B) - 102+11 Pt(A) - 105+38



Record: 1923-1924 Plans  
 PI Sta = 4+75.4  
 $\Delta = 60^{\circ} - 05'$   
 $R = 1432.69$   
 $T = 76.12$   
 $L = 152.02$   
 $\Delta = 60^{\circ} - 41'$  Rt Meas, 1973



Set Mag/W  
 9-17-04  
 RGN

Set N/shi  
 6" Twin  
 Maple

Set N/shi  
 12" Maple

Set N/shi  
 5' up  
 14" elm

Set W/shi  
 5' up N/S.  
 of Elm

Fd N/shi  
 32" Cotton Wood  
 N/S

# O.D.O.T. DISTRICT 2 SURVEY OFFICE

PERSONNEL

REFERENCE NO. 5

SHEET 3 OF 34

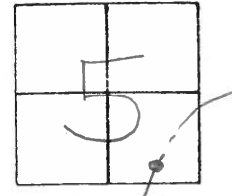
NOTES BARNHISEL  
 H.C. CURTIS  
 R.C. VAN DUSEN  
Loehrke  
Romeo

DATE 4-22-92  
 WEATHER Cloudy  
 TEMP. +50°

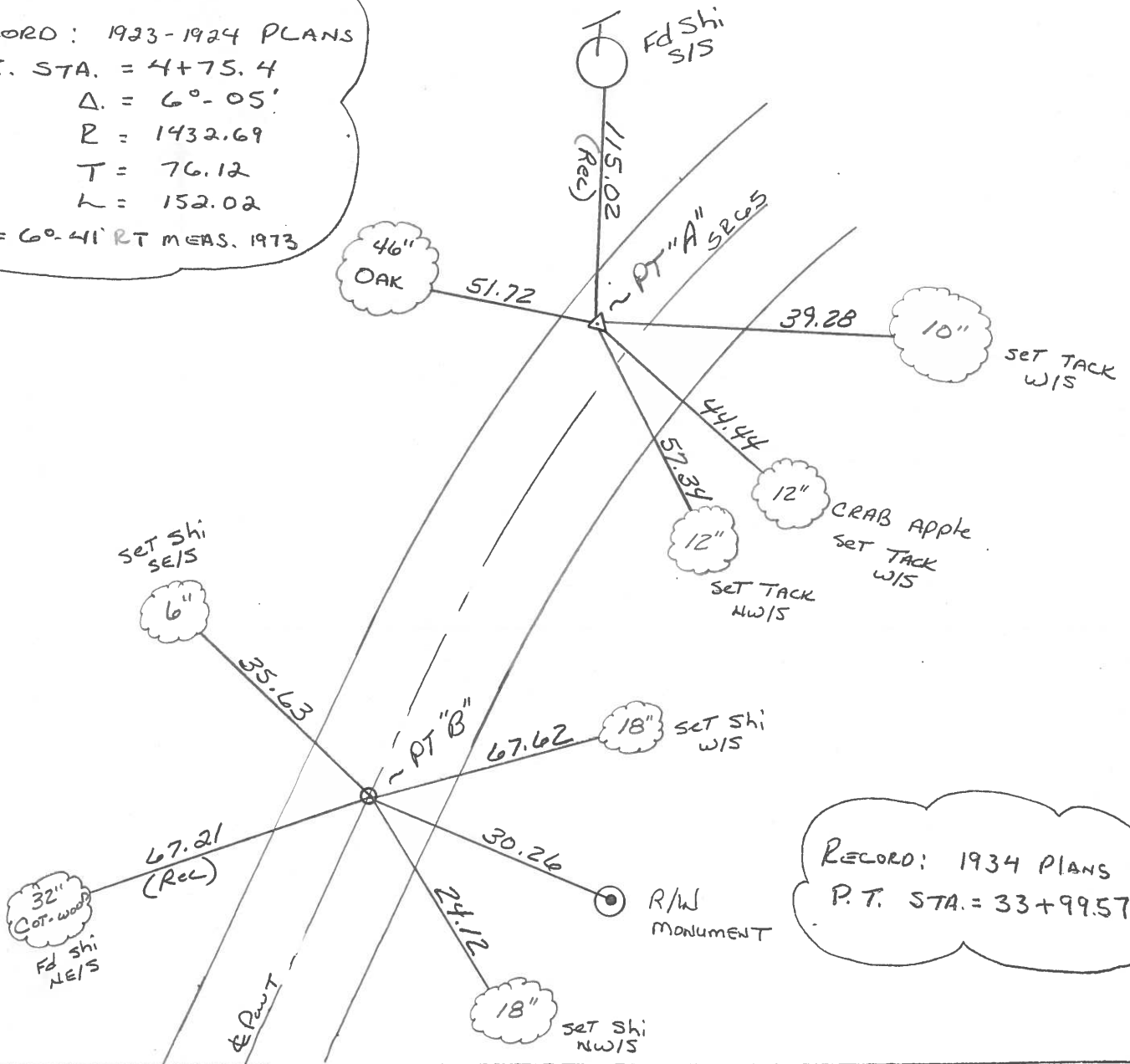
ROUTE SR 65  
 COUNTY WOOD  
 TOWNSHIP GRAND RAPIDS  
 SECTION 5  
T5 NR 9 E

TYPE MONUMENT PT "A" & PT "B" ~ PK'S & WASHERS  
 ON SURFACE - BELOW YES ~ YES  
 LEFT- & PAW'T. - RIGHT ON E ~ 3.8  
 S.L.M. PT "B" 102+04 Pt A 105+28

Set  
 PK'S & WASHERS  
 5-4-92  
 C.L.



RECORD: 1933-1924 PLANS  
 P.I. STA. = 4+75.4  
 $\Delta = 6^{\circ}-05'$   
 $R = 1432.69$   
 $T = 76.12$   
 $L = 152.02$   
 $\Delta = 6^{\circ}-41'$  RT MEAS. 1973



RECORD: 1934 PLANS  
 P.T. STA. = 33+99.57

OD.O.T. DISTRICT 2 SURVEY OFFICE

SHEET 11 OF     

County Wood S.R. 65

Date 6-9-82  
12-9-81

Township Grand Rapids

Weather cloudy

Section 5

Temp. +30°

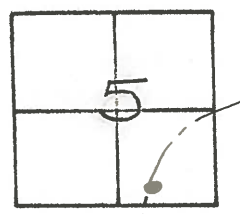
T5N, R9E

Personnel Hoffman

Loehke

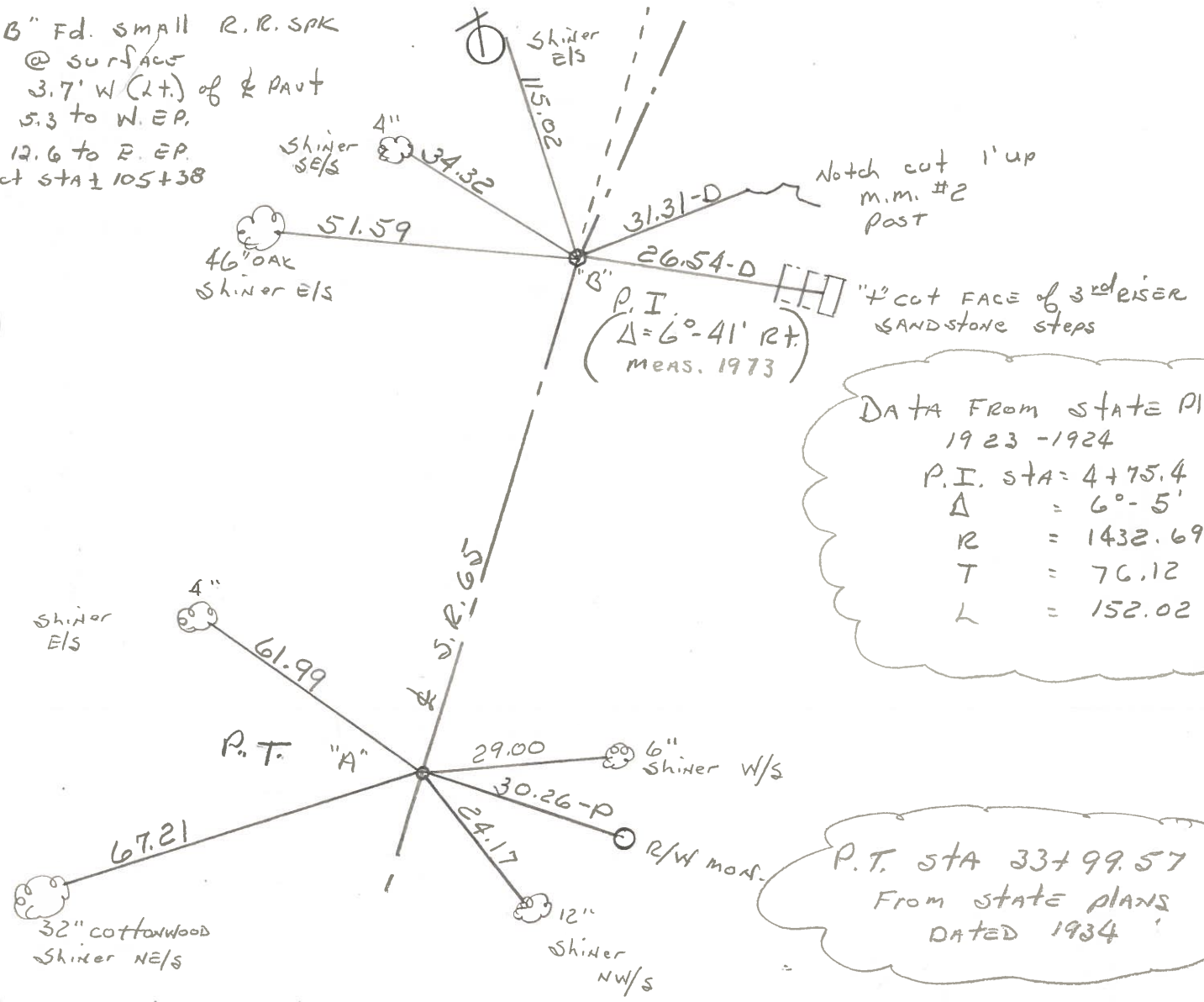
Householder

#5



St. "A" Fd P.K. @ surface @ & PAVT - Project STA ± 102+13

St. "B" Fd. small R.R. SPK  
@ surface  
3.7' W (2+) of & PAVT  
5.3 to W.E.P.  
12.6 to R.E.P.  
Project STA ± 105+38



DATA FROM STATE PLAN  
1923 - 1924  
P.I. STA = 4+75.4  
 $\Delta = 6^\circ - 5'$   
R = 1432.69'  
T = 76.12  
L = 152.02

P.T. STA 33+99.57  
From state plans  
DATED 1934

County WOOD S.R. 65

Township GRAND RAPIDS

Section X

T5N, R9E

Personnel BURNSIDE

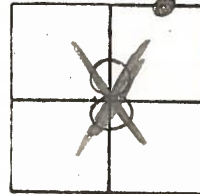
SMITH

BOWERS

Date 9-27-72

Weather CLOUDY

Temp. 63°



#5

P.I. STA. 4+75.4

SET SMALL R.R. SPK.  
3.3'± LT. OF & PAUT.

$\Delta = 6^{\circ}-41'$  RT. (MEAS.)

3.7 H of &  
53 to XED

12.4 To Sep ~~105+38~~

105+38

CURVE DATA FROM  
STATE PLAN - 1923-1924  
P.I. STA. 4+75.4  
 $\Delta = 6^{\circ}-5'$   
R = 1432.69'  
T = 76.12  
L = 152.02

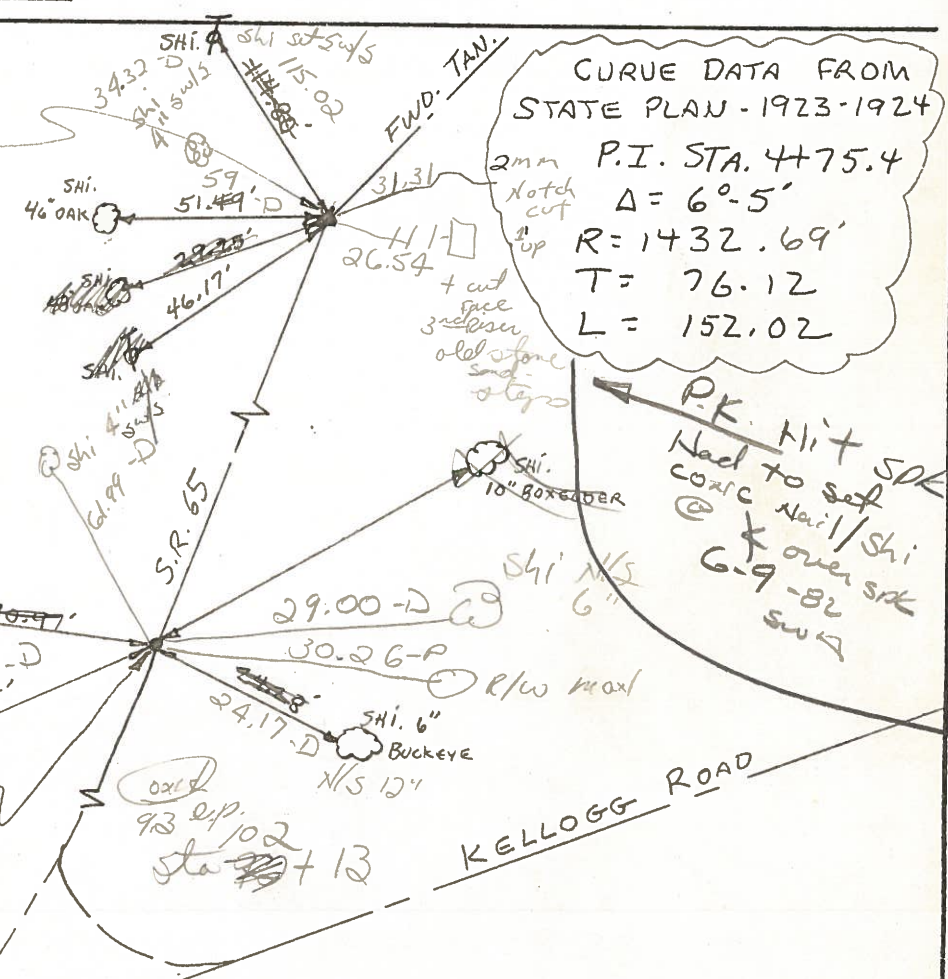
P.K. Hit SPK  
Nail to set  
conc Nail/Shi  
@ X over SPK  
6-9-82  
SWA

Set PK/washer  
6-9-82 SWA

P.T. STA. 33+99.57

SET P.K. NAIL IN CTR.  
PAUT.

NOTE: P.T. STA.  
TAKEN FROM STATE  
PLAN DATED 1934



ODOT. DISTRICT 2 SURVEY OFFICE

SHEET \_\_\_\_\_ OF \_\_\_\_\_

County WOOD S.R. 65

Date 9-27-72

Township GRAND RAPIDS

Weather CLOUDY

Section 8

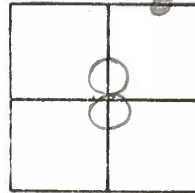
Temp. 63°

T5N, R9E

Personnel BURNSIDE

SMITH

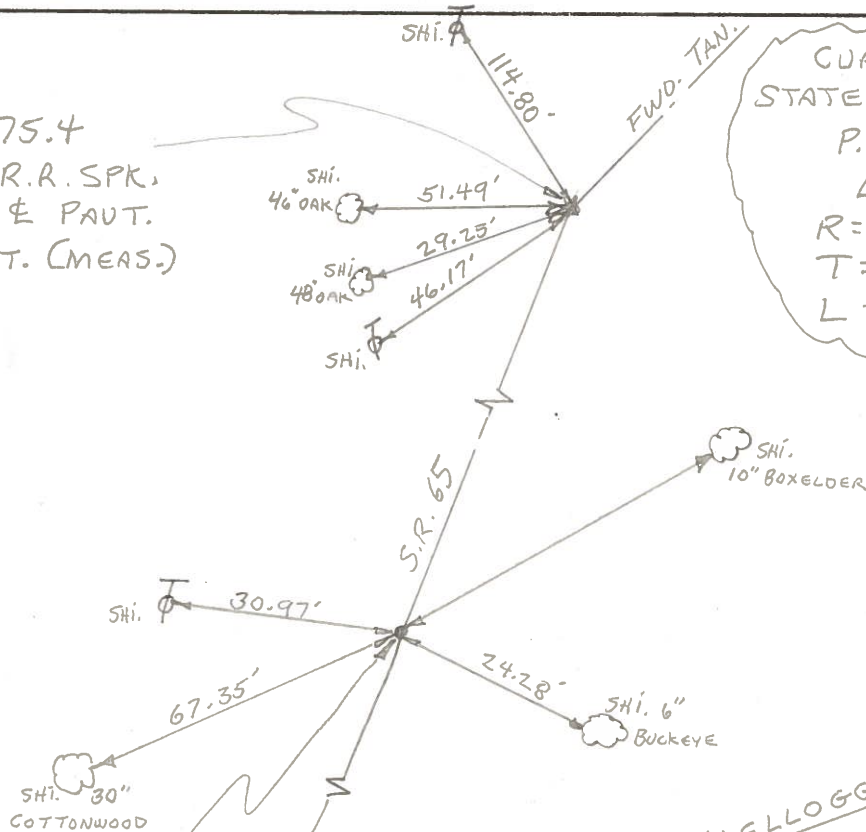
BOWERS



#5

P.I. STA. 4+75.4  
 SET SMALL R.R. SPK.  
 3.3' ± LT. OF & PAUT.  
 Δ = 6°-41' RT. (MEAS.)

CURVE DATA FROM  
 STATE PLAN - 1923-1924  
 P.I. STA. 4+75.4  
 Δ = 6°-5'  
 R = 1432.69'  
 T = 76.12  
 L = 152.02



P.T. STA. 3+99.57  
 SET P.K. NAIL IN CTR.  
 PAUT.

NOTE: P.T. STA.  
 TAKEN FROM STATE  
 PLAN DATED 1934