

O.D.O.T. DISTRICT 2 SURVEY OFFICE (USE ONLY)

PERSONNEL

REFERENCE NO. 7 F

SHEET 33 OF 40

NOTES RHOADES

DATE 3/30/22

ROUTE SR 65

H.C. NIESE

WEATHER CLOUDY

COUNTY WOOD

R.C. KETNER

TEMP. 40°

TOWNSHIP GRAND RAPIDS

AUBLE

SECTION 4

DWG BY RHOADES PID 95796

T 5 N R 9 E

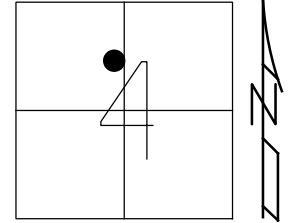
TYPE MONUMENT MAG/WASHER

ON SURFACE - ~~BELOW~~ ON

OFFSET 4.7' LT : ~~RT~~

5.3' TO LT EDGE PAVEMENT

STATION: 155+29.23



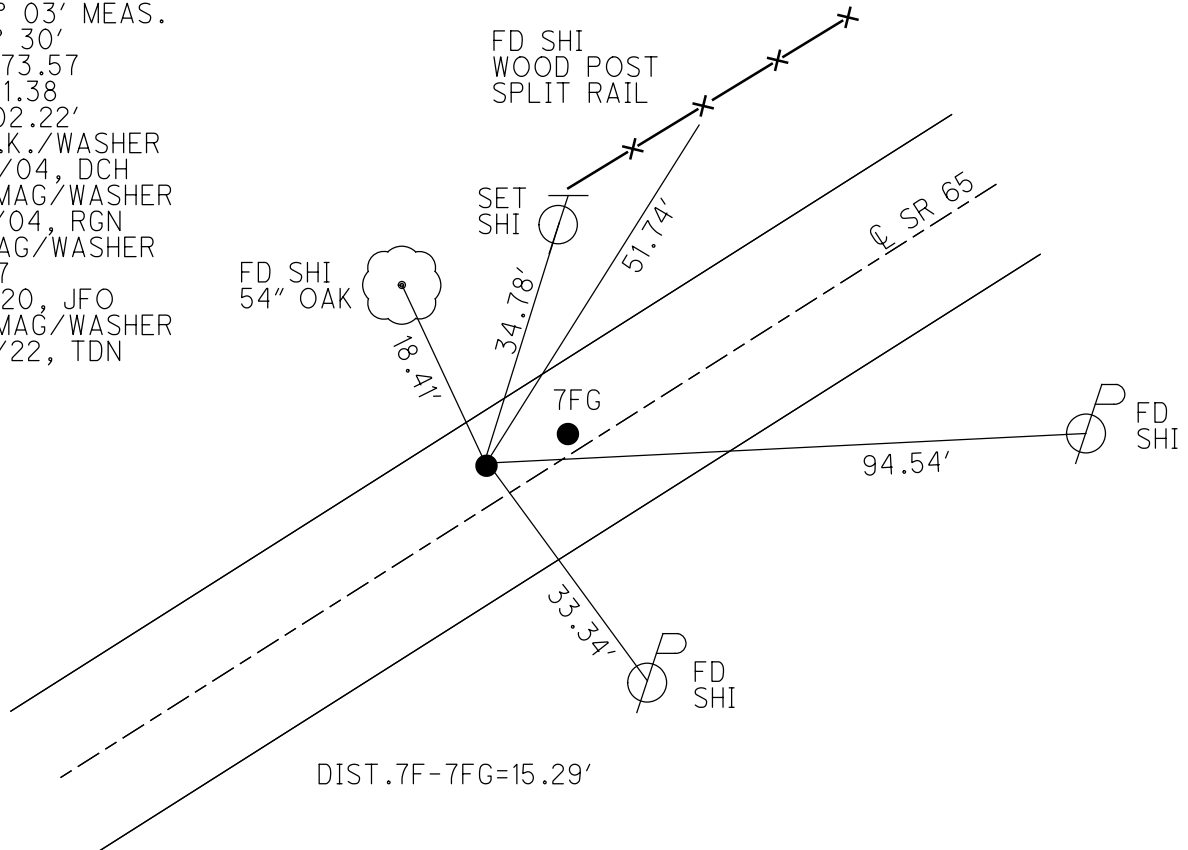
HORIZ.DATUM: NAD83 2011

GEOID: NAVD88 2018

GRID: NORTHING: 643385.193

EASTING: 1602352.133

RECORD: P.I.
 STA. 54+79
 $\Delta = 9^\circ 06'$
 $\Delta = 9^\circ 03'$ MEAS.
 $D = 4^\circ 30'$
 $R = 1273.57$
 $T = 101.38$
 $L = 202.22'$
 FD P.K./WASHER
 6/22/04, DCH
 SET MAG/WASHER
 9/17/04, RGN
 FD MAG/WASHER
 REFF 7
 11/3/20, JFO
 SET MAG/WASHER
 10/5/22, TDN



O.D.O.T. DISTRICT 2 SURVEY OFFICE

PERSONNEL

REFERENCE NO. 7 F

SHEET 26 OF 49

NOTES Nuhfer

H.C. Homan

R.C. Huss

DATE 6-22-04

WEATHER Sun

TEMP. 80°F

ROUTE S.R. 65

COUNTY Wood

TOWNSHIP Grand Rapids

SECTION 4

T5 N R 9 E

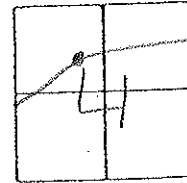
TYPE MONUMENT PK/w's Pt. A and B

ON SURFACE - ~~BENOW~~ Surface both points

~~LEFT~~ ~~PAV'T~~ ~~RIGHT~~ (A) 4.7' Lt. (B) 1.6' Lt.

TO Lt. EDGE PAVEMENT

S.L.M. Pt A - 155+29 , Pt B - 155+44

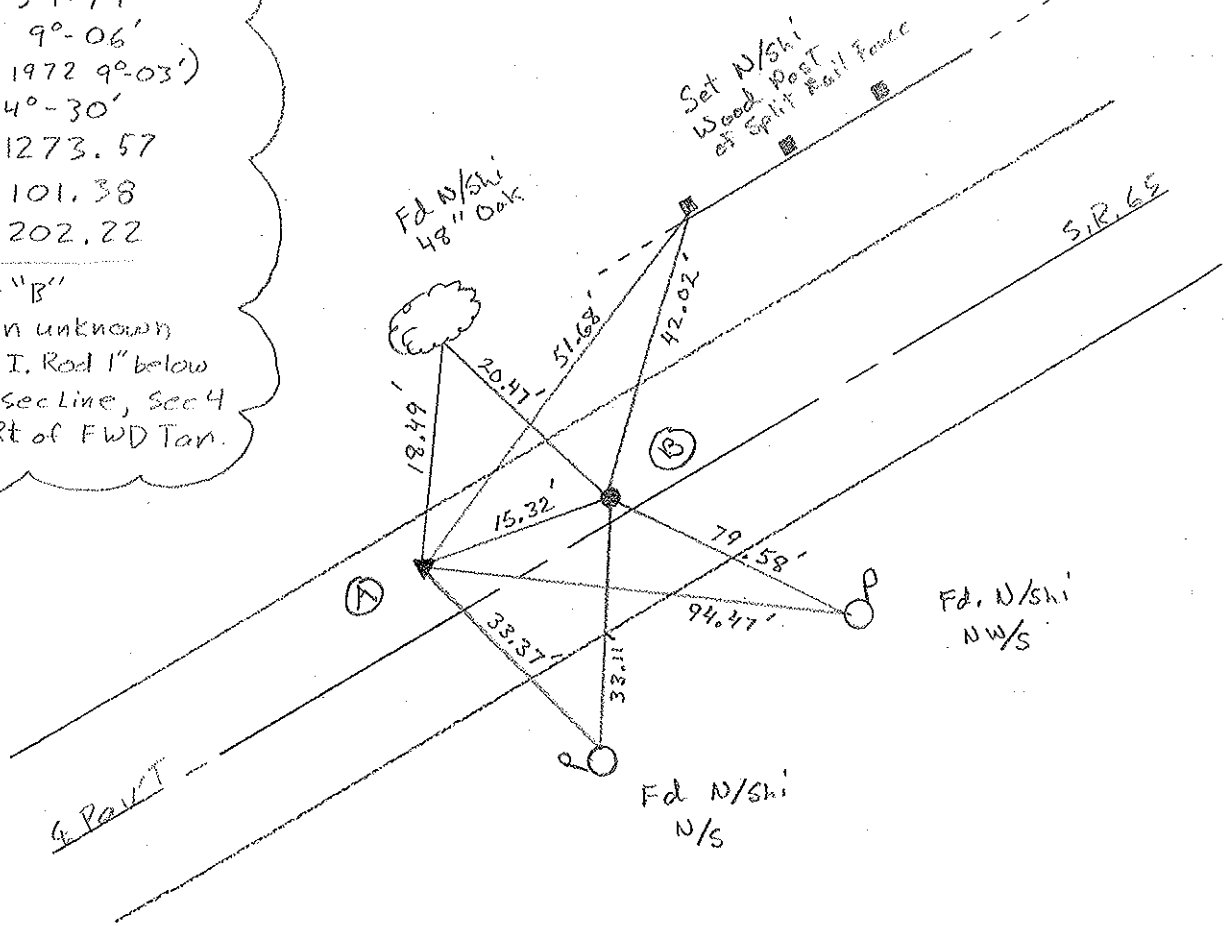


Record:

Point "A"
 1923-1924 Plans
 P.I. = 54+79
 A = 9°-06'
 (meas. 1972 9°-03')
 D = 4°-30'
 R = 1273.57
 T = 101.38
 L = 202.22

Point "B"
 Origin unknown
 Fd 1/2" I. Rod 1" below
 on 1/2 sec Line, Sec 4
 1.76' Rt of FWD Tan.

(Set Mag/W
 9-17-04
 RGN.)



O.D.O.T. DISTRICT 2 SURVEY OFFICE

PERSONNEL

REFERENCE NO. 7 F

SHEET 11 OF 34

NOTES BARNHISEL

H.C. CURTIS

R.C. VAN DUSEN

LOCHRKE

ROMETO

DATE 4-21-92

WEATHER cloudy

TEMP. +65°

ROUTE SR 65

COUNTY WOOD

TOWNSHIP GRAND RAPIDS

SECTION 4

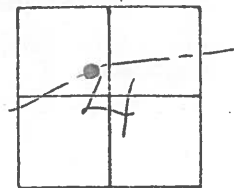
T5 N R 9 E

Reset

P.K.'s & WASHERS

5-4-92

C.L.



TYPE MONUMENT PT "A" ~ PT "B"

ON SURFACE - BELOW YES ~ YES

LEFT- & PAV'T. - RIGHT 3.9 ~ 0.9

A- 4.6
B- 7.9 TO LT EDGE PAVEMENT

S.L.M. PT "A" 155+29

RECORD:

POINT "A"

1923-1924 PLANS

P.I. 54+79

$\Delta = 90.06'$
(MEAS. 1972 90.03')

D = 40.30'

R = 1273.57

T = 101.38

L = 202.22

POINT "B"

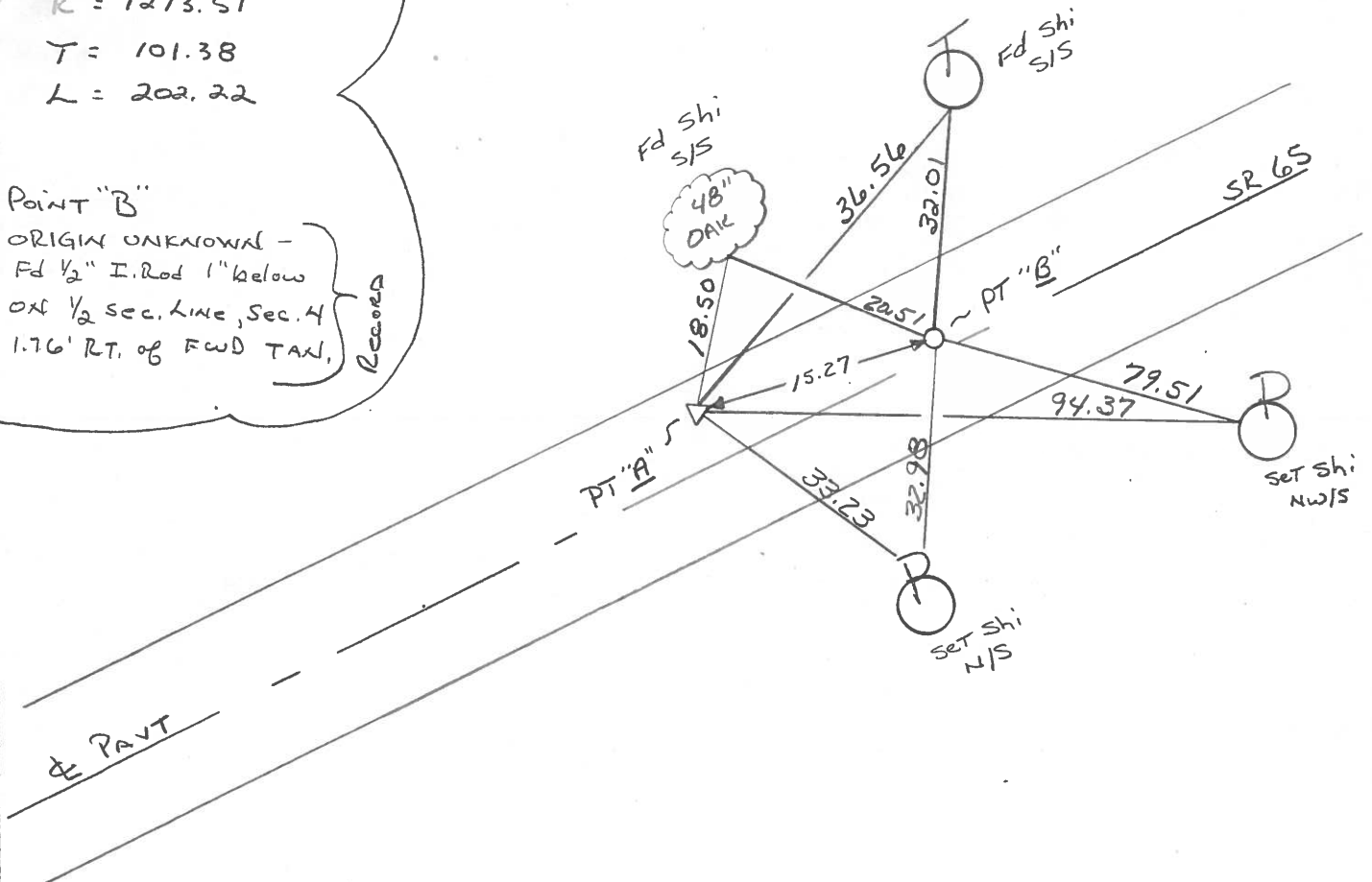
ORIGIN UNKNOWN -

Fd 1/2" I. Rod 1" below

ON 1/2 sec. line, Sec. 4

1.76' RT. of FWD TAXI,

RECORD



O.D.O.T. DISTRICT 2 SURVEY OFFICE

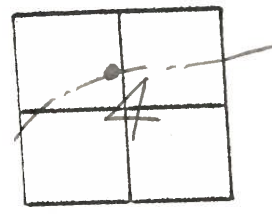
SHEET 19 OF

County Wood S.R. 65
 Township Grand Rapids
 Section 4

Date 6-9-82
12-10-81
 Weather Clear
 Temp. +28°

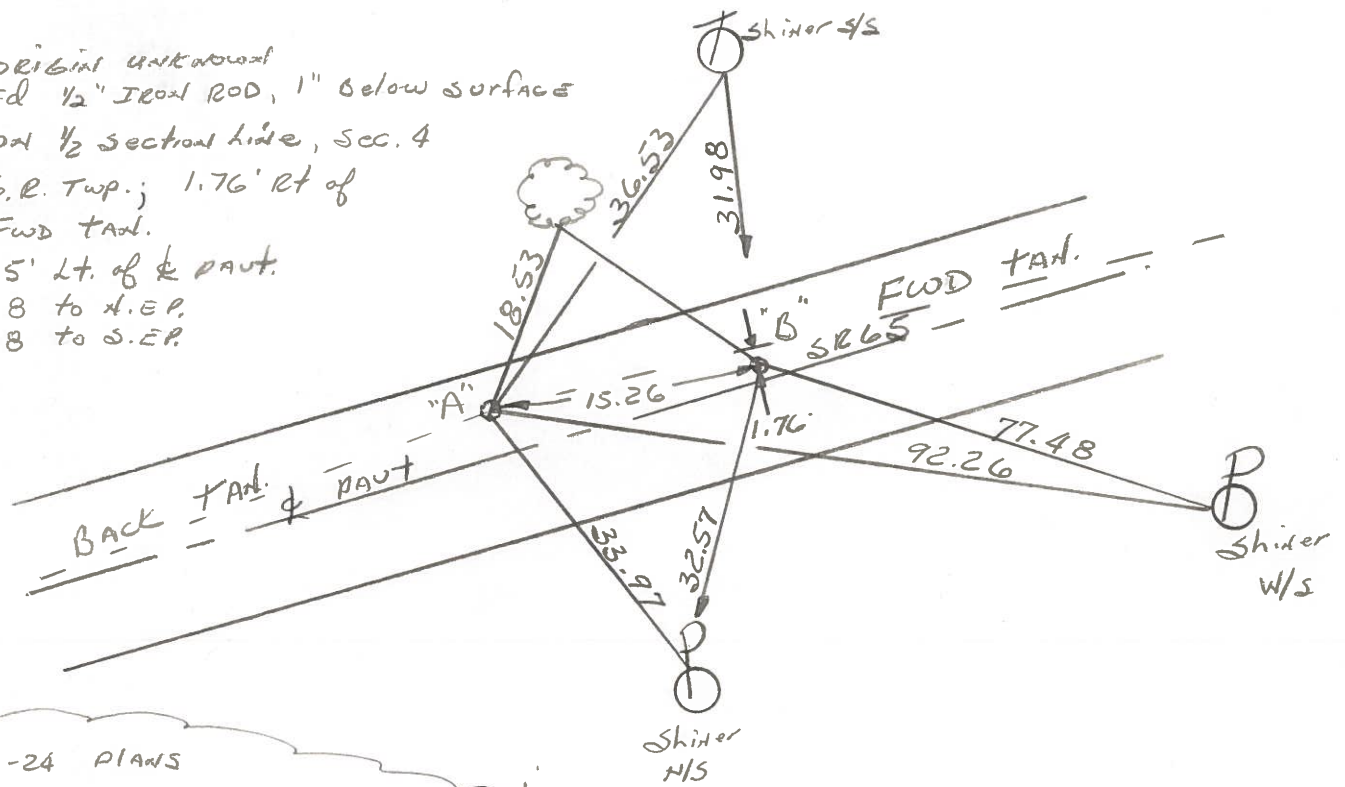
Personnel Hoffman
Loehrke
Householder

7-F



Pt. "A" Fd. small R.R. spike, 1/2" below surface — Project sta ± 155 + 41
 3.8' Lt. of & PAUT.
 4.6' to N.E.P.
 13.1' to S.E.P.

Pt. "B" original unknown
 Fd 1/2" Iron rod, 1" below surface
 on 1/2 section line, Sec. 4
 6.R. Twp.; 1.76' Rt of
 FWD TAN.
 1.5' Lt. of & PAUT.
 7.8 to N.E.P.
 10.8 to S.E.P.

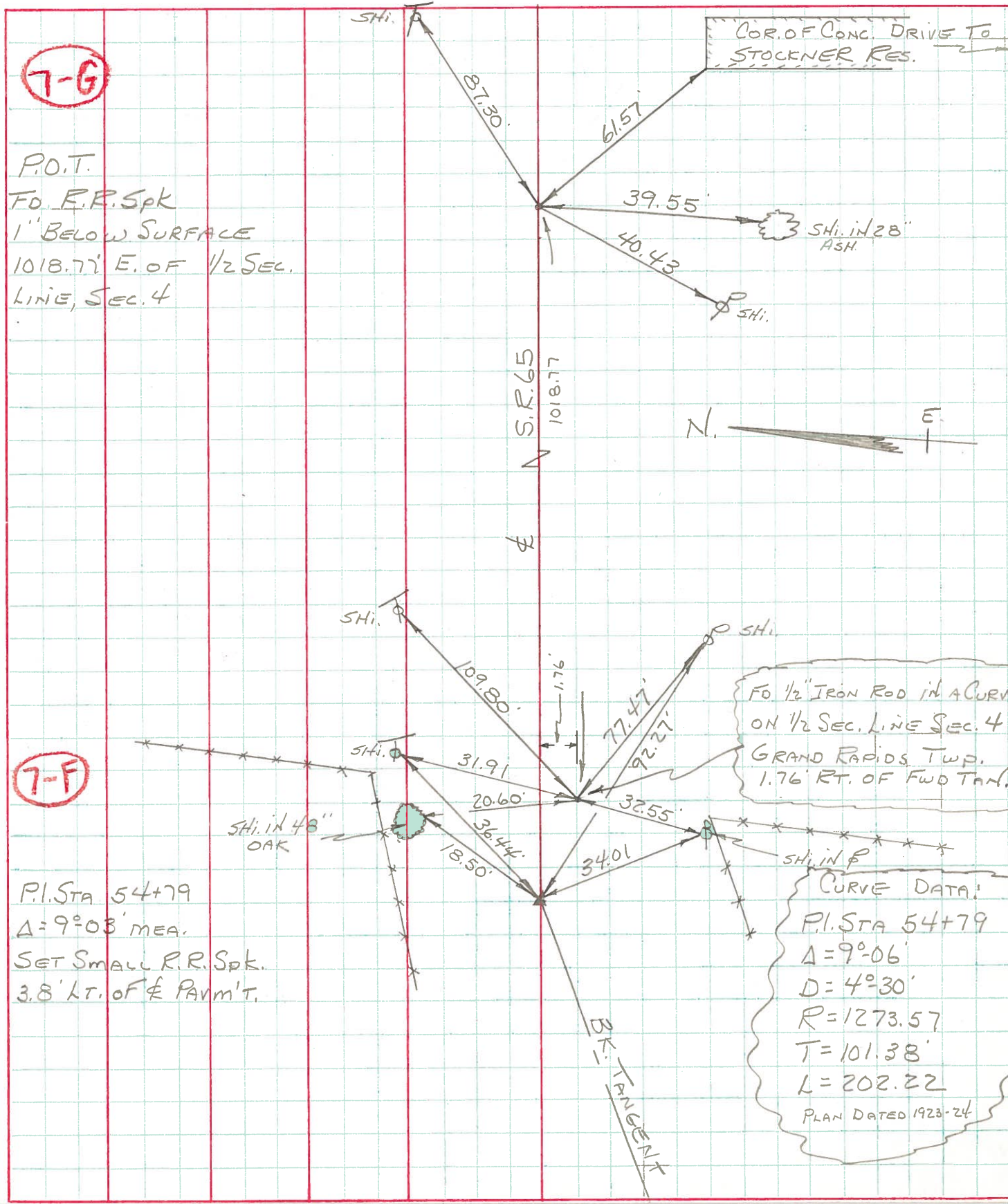


1923-24 PLANS
 P.I. STA 54 + 79
 $\Delta = 90-06'$ ($90-03'$ MEHS, 1972)
 $D = 40-30'$
 $R = 1273.57$
 $T = 101.38$
 $L = 202.22$

PERSONNEL TITLE PERSONNEL TITLE
 BURNSIDE
 SMITH
 BOWERS

COUNTY Wood DATE 10-6-72
 S. R. 65 WEATHER Cloudy
 SEC. GRAND RAPIDS TWP TEMP. +55°

DESCRIPTION ESTABLISH P.I.² JOB NO.



7-G

P.O.T.
 FO. R.R. Spk
 1" BELOW SURFACE
 1018.77' E. OF 1/2 SEC.
 LINE, SEC. 4

7-F

P.I. STA 54+79
 Δ=9°03' MEA.
 SET SMALL R.R. Spk.
 3.8' LT. OF & PAVM'T.

CURVE DATA:
 P.I. STA 54+79
 Δ=9°06'
 D=4°30'
 R=1273.57
 T=101.38'
 L=202.22
 PLAN DATED 1923-24