

O.D.O.T. DISTRICT 2 SURVEY OFFICE (USE ONLY)

PERSONNEL

REFERENCE NO. 8

SHEET 39 OF 40

NOTES RHOADES

DATE 3/30/22

ROUTE SR 65

H.C. NIESE

WEATHER CLOUDY

COUNTY WOOD

R.C. KETNER

TEMP. 46°

TOWNSHIP GRAND RAPIDS

AUBLE

DWG BY RHOADES

PID 95796

SECTION 3

T 5 N R 9 E

TYPE MONUMENT 1" IPIPE

~~ON SURFACE~~ - BELOW 6"

OFFSET ¢ PAVEMENT 12' ~~±~~ : RT

2.6' TO RT EDGE PAVEMENT

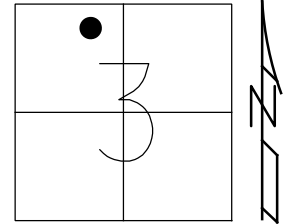
STATION: 199+33.44

HORZ. DATUM: NAD83 2011

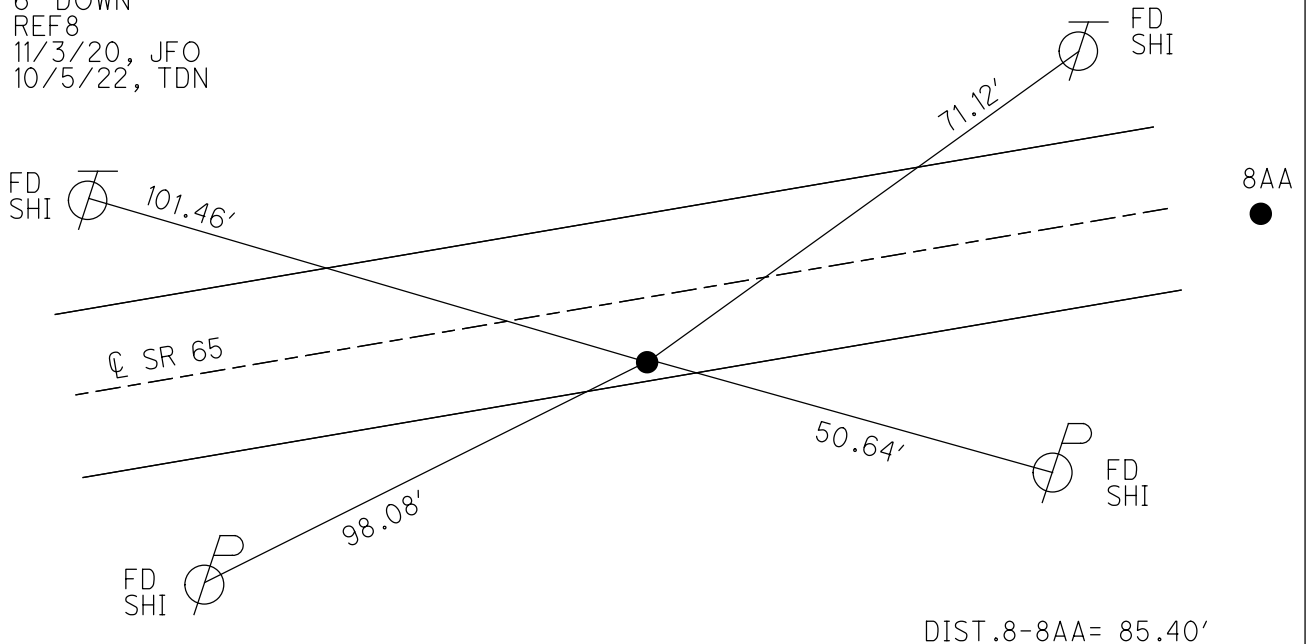
GEOID: NAVD88 2018

GRID: NORTHING: 644152.214

EASTING: 1606678.675



RECORD: P.I.
 STA. 99+97.9
 $\Delta = 14^\circ 45'$ LT
 $D = 6^\circ 00'$
 $R = 955.37$
 $T = 123.53$
 $L = 245.63'$
 FD 1" IPIPE
 4" DOWN
 6/22/04, DCH
 SET MAG/WASHER
 9/17/04, RGN
 FD 1" IPIPE
 6" DOWN
 REF8
 11/3/20, JFO
 10/5/22, TDN



O.D.O.T. DISTRICT 2 SURVEY OFFICE

PERSONNEL _____

REFERENCE NO. 8

SHEET 30 OF 49

NOTES Nuh Fer

H.C. Homan

R.C. Huss

DATE 6-22-04

WEATHER Sun.

TEMP. 78°

ROUTE S.R. 65

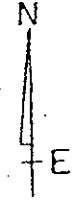
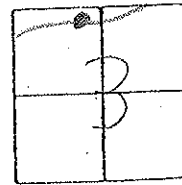
COUNTY Wood

TOWNSHIP Grand Rapids

SECTION 3

T5 N R 9 E

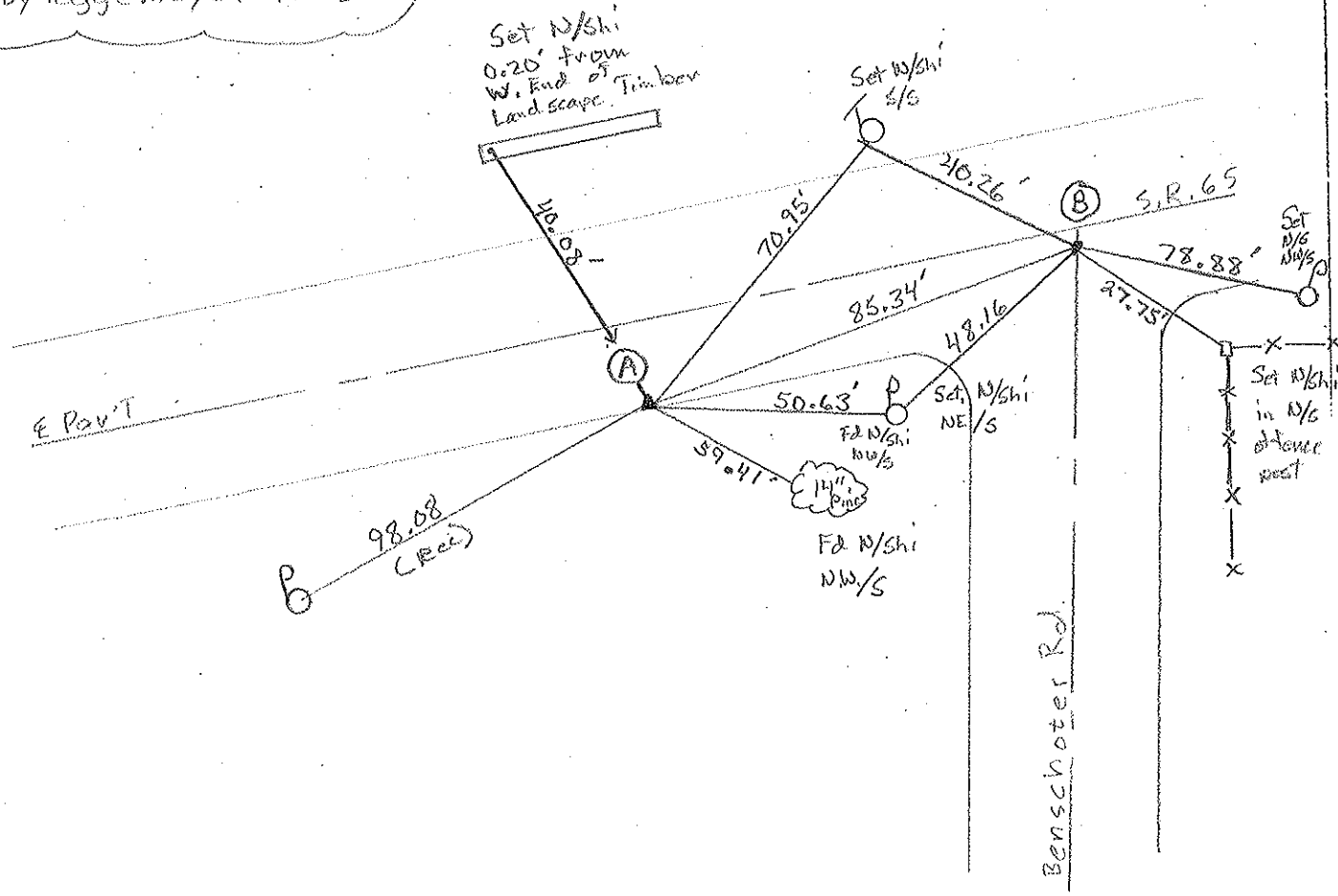
TYPE MONUMENT (A) 1" iron pipe (B) Mag/shi
 ON SURFACE - BELOW (A) 4" below (B) Surface
 LEFT - E PAV'T. - RIGHT (A) 12' Rt. (B) 13.3' to Lt. EDP
 (A) 2.6' Rt. ^{of} Rt. EDGE PAVEMENT (B) 3' Rt of a
 S.L.M. (A) 199+34



Record: 1923-1924 Plans
 P.I. = 98+97.9
 Δ = 14°-45' LT
 D = 6°-00'
 R = 955.37 T = 123.53
 L = 245.63
 Δ By Poggemeyer (= 15°-20')

"B" - original Max-wound

Set - Mag/W
 at Points A+B
 9-17-04
 RGN



O.D.O.T. DISTRICT 2 SURVEY OFFICE

PERSONNEL

REFERENCE NO. 8

SHEET 15 OF 34

NOTES BARNHISEL

H.C. CURTIS

R.C. VAN DUSEN

Loehrke

Romero

DATE 4-21-92

WEATHER Cloudy

TEMP. +65°

ROUTE SR 65

COUNTY WOOD

TOWNSHIP Grand Rapids

SECTION 3

T 5 N 9 E

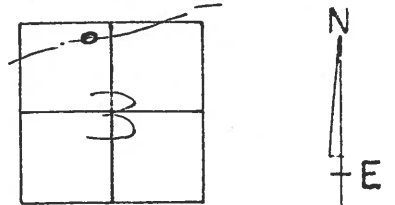
TYPE MONUMENT 1" IRON PIPE

~~ON~~ SURFACE - BELOW 4"

~~LEFT~~ - ~~C~~ PAV'T. - RIGHT 12.0

~~2.8 RT~~ ^{OF} ~~TO~~ RT. EDGE PAVEMENT

S.L.M. 199+34



RECORD: 1923-1924 PLANS

P.I. 98+97.9

$\Delta = 14^{\circ}-45'LT.$

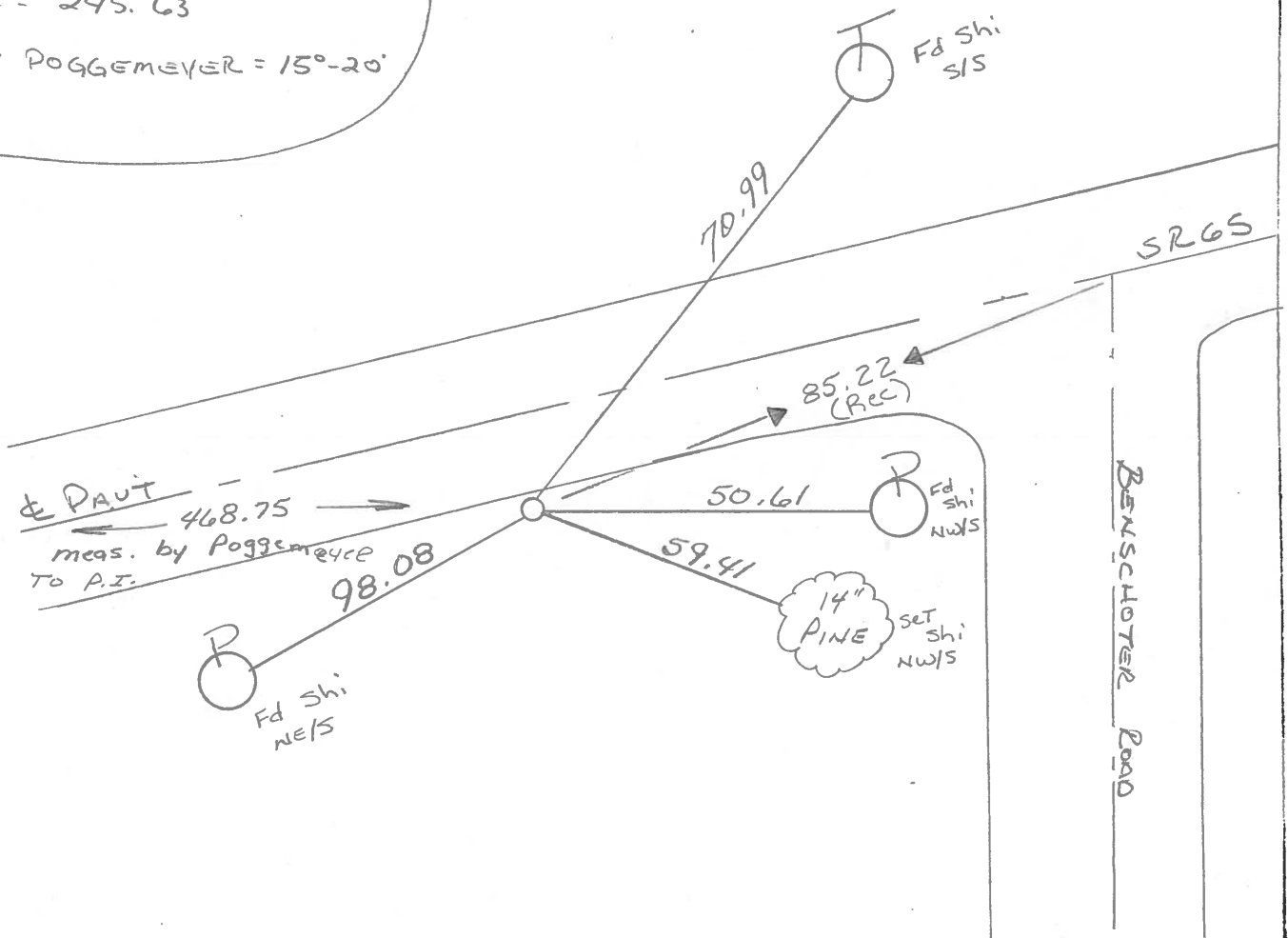
$D = 6^{\circ}-00'$

$R = 955.37$

$T = 123.53$

$L = 245.63$

Δ BY POGGEMEYER = $15^{\circ}-20'$



O.D.O.T. DISTRICT 2 SURVEY OFFICE

SHEET _____ OF _____

County WOOD S.R. 65

Township GRAND RAPIDS

Section 3

T5N, R9E

Personnel BURNSIDE H

SMITH H

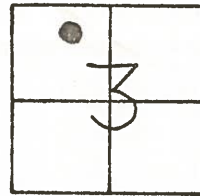
_____ H

_____ H

Date 10-10-72 ¹²⁻¹⁰⁻⁸¹

Weather CLEAR ✓

Temp. 67° 30'



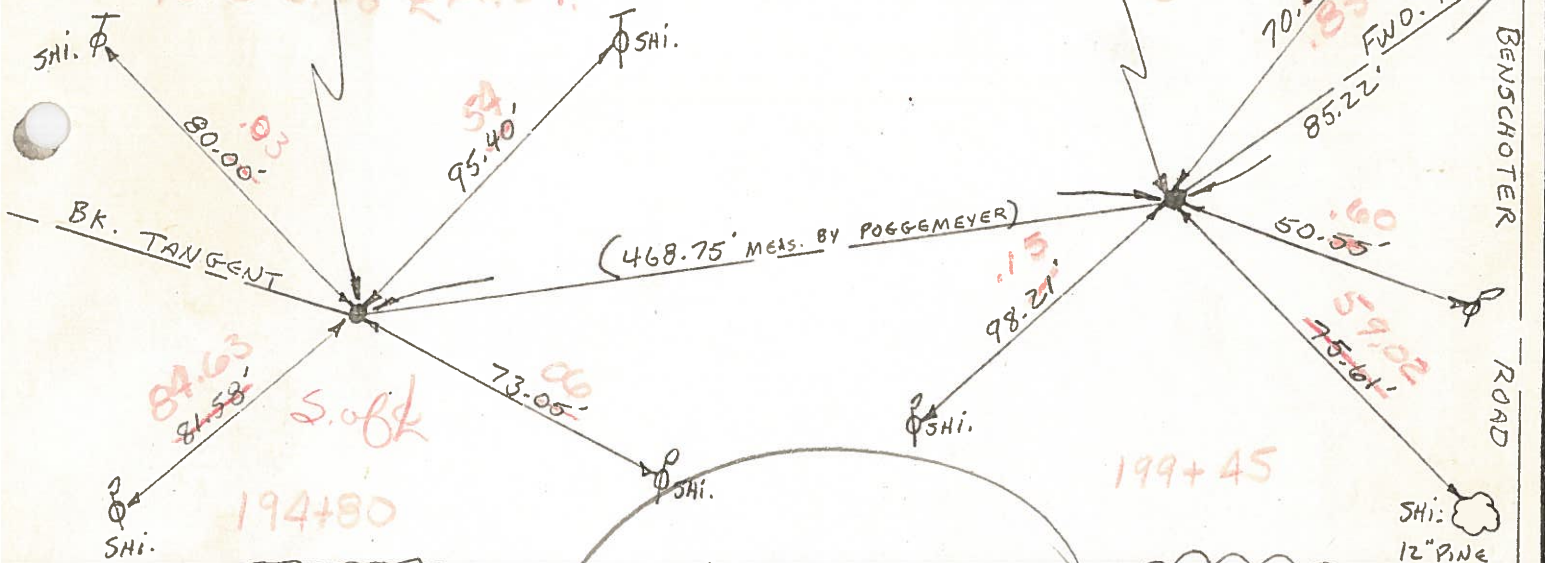
8

P.I. FD. TACKED HUB
SET BY POGGEMEYER,
REPLACED WITH 1" IRON **Fd pipe**
PIPE **4'** S. OF S. EDGE PAUT.
 $\Delta = 19^{\circ}-00'$ (POGGEMEYER)

13.6 S. OF PAUT.

P.I. FD. TACKED HUB
BY POGGEMEYER REPLACED
WITH 1" IRON PIPE. **Fd pipe**
3.0 S. OF S. EDGE PAUT.
 $\Delta = 15^{\circ}-20'$ (POGGEMEYER)

11.6 S. OF PAUT.



CURVE DATA
PLAN-1923-24
P.I. = STA. 94+13.3
 $\Delta = 20^{\circ}-22'$ LT.
D = 6'-00'
R = 955.37
T = 171.58'
L = 339.44

Located Both
Points - painted
→ 's on
S.E.P.
6-9-82
sm

CURVE DATA
PLAN-1923-24
P.I. = STA. 98+97.9
 $\Delta = 14^{\circ}-45'$ LT.
D = 6'-00'
R = 955.37
T = 123.53'
L = 245.63

(CONFRONTATION FARM)

OD.O.T. DISTRICT 2 SURVEY OFFICE

SHEET 23 OF

County Wood S.R. 65

Township Grand Rapids

Section 3

EN, R9E

Personnel Hoffman

Loehrke

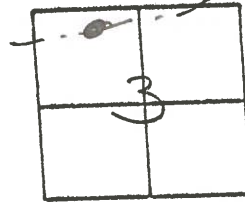
Householder

88

Date 12-10-81

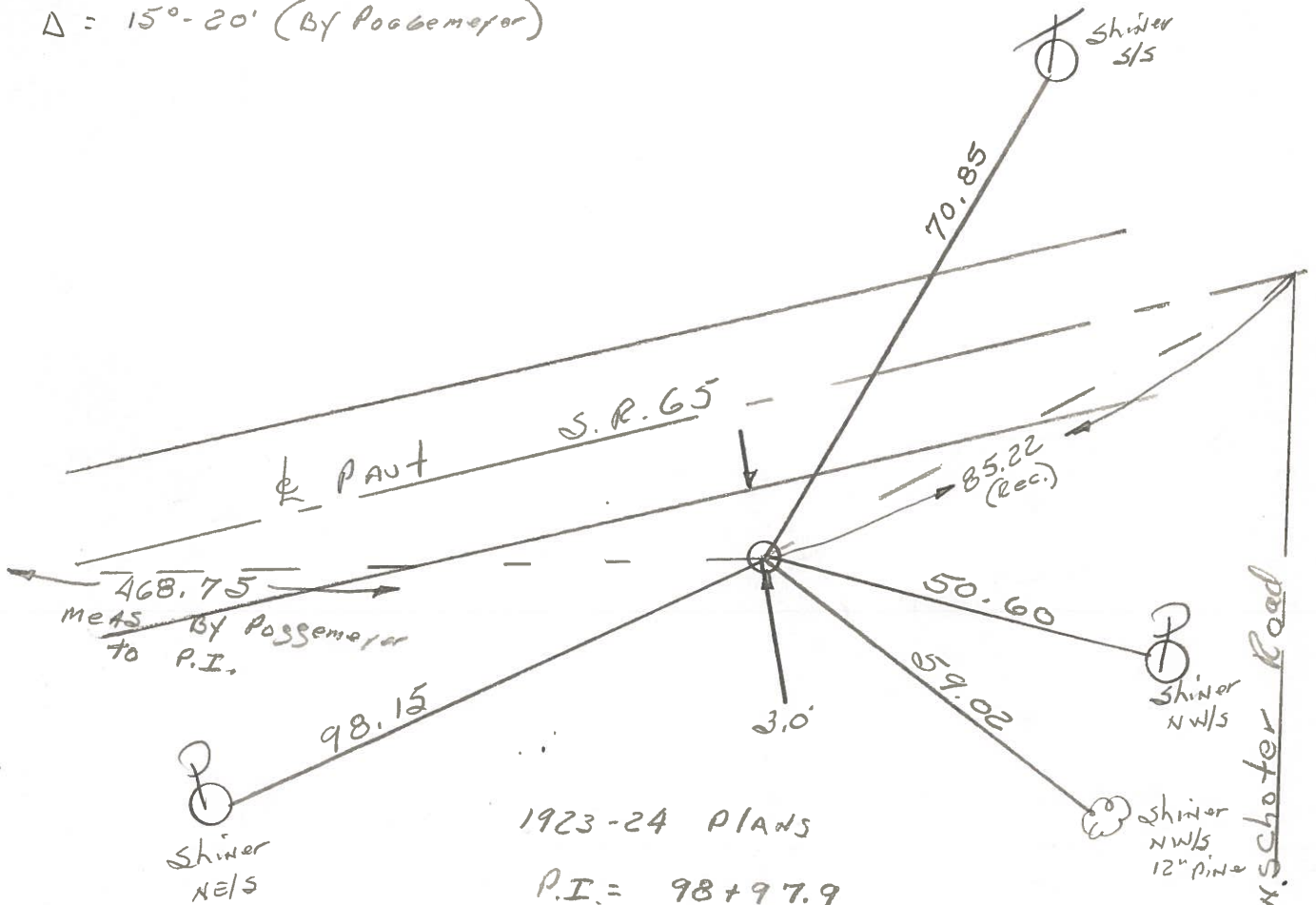
Weather Clear

Temp. +28°



Project stat 199+45

Fd. 1" I.D. IRON pipe @ surface
 11.6' S. of & PAUT.
 3.0' S. of S.F.P.
 $\Delta = 15^\circ - 20'$ (By Possemeyer)



1923-24 PLANS

P.I. = 98+97.9

$\Delta = 14^\circ - 45' \text{ L.t.}$

D = 6°-00'

R = 955.37

T = 123.53

L = 245.63

OD.O.T. DISTRICT 2 SURVEY OFFICE

SHEET _____ OF _____

County WOOD S.R. 65

Township GRAND RAPIDS

Section 3

T5N, R9E

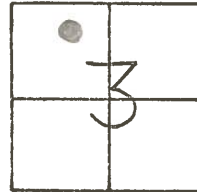
Personnel BURNSIDE

SMITH

Date 10-10-72

Weather CLEAR

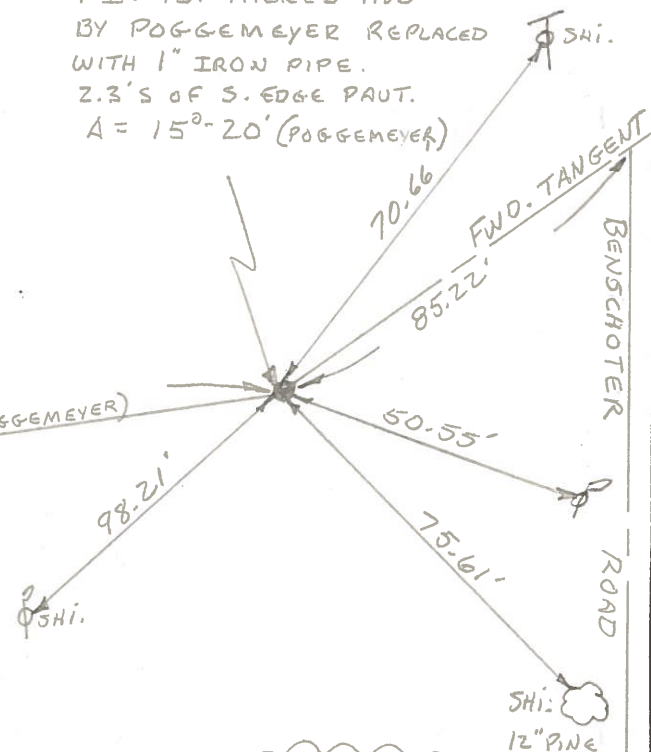
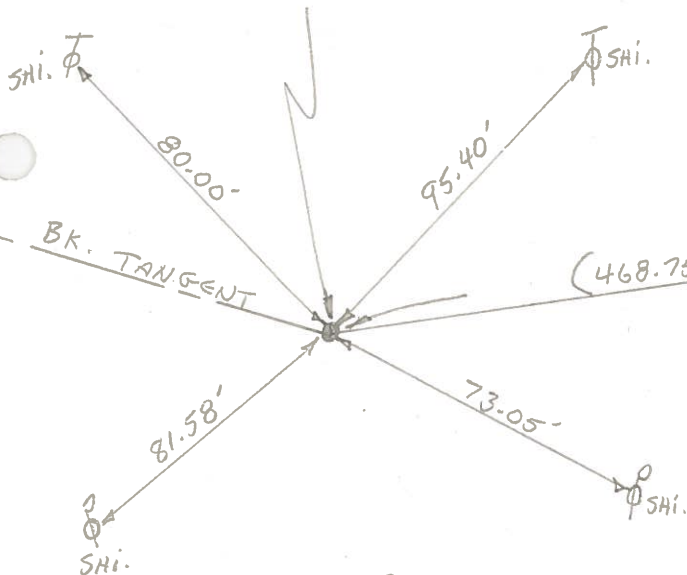
Temp. 67°



#8

P.I. FD. TACKED HUB
SET BY POGGEMEYER,
REPLACED WITH 1" IRON
PIPE 4' S. OF S. EDGE PAUT.
 $\Delta = 19^{\circ}-00'$ (POGGEMEYER)

P.I. FD. TACKED HUB
BY POGGEMEYER REPLACED
WITH 1" IRON PIPE.
2.3'S OF S. EDGE PAUT.
 $\Delta = 15^{\circ}-20'$ (POGGEMEYER)



CURVE DATA
PLAN-1923-24
P.I. = STA. 94+13.3
 $\Delta = 20^{\circ}-22'$ LT.
D = 6°-00'
R = 955.37
T = 171.58'
L = 339.44

CURVE DATA
PLAN-1923-24
P.I. = STA. 98+97.9
 $\Delta = 14^{\circ}-45'$ LT.
D = 6°-00'
R = 955.37
T = 123.53'
L = 245.63

County WOOD S.R. 65

Township GRAND RAPIDS

Section 3

T5N, R9E

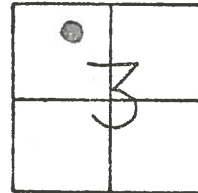
Personnel BURNSIDE

SMITH

Date 12-10-51
10-10-72

Weather CLEAR

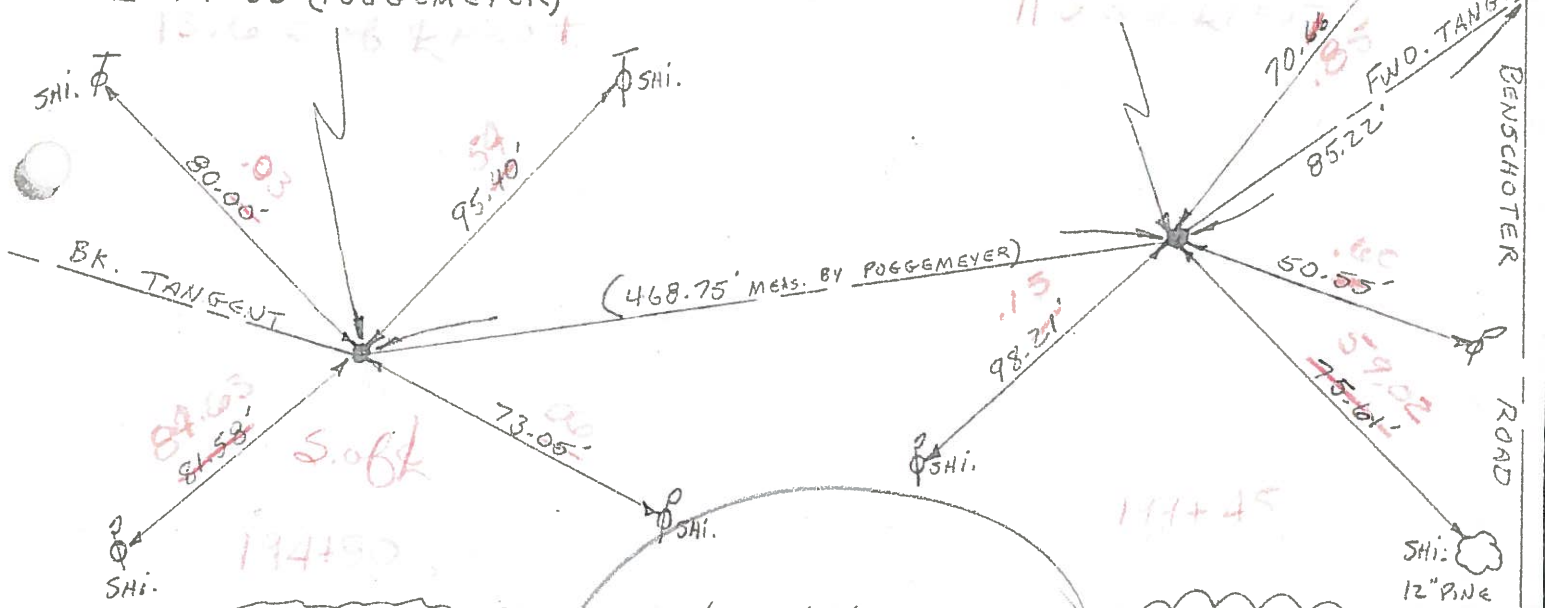
Temp. 67°



8

P.I. PD. TACKED HUB
SET BY POGGEMEYER,
REPLACED WITH 1" IRON **Fd pipe**
PIPE 4' S. OF S. EDGE PAUT.
 $\Delta = 19^{\circ}-00'$ (POGGEMEYER)

P.I. PD. TACKED HUB
BY POGGEMEYER REPLACED
WITH 1" IRON PIPE. **Fd pipe**
PIPE 2.3' S. OF S. EDGE PAUT.
 $\Delta = 15^{\circ}-20'$ (POGGEMEYER)



CURVE DATA
PLAN-1923-24
P.I. = STA. 94+13.3
 $\Delta = 20^{\circ}-22'$ LT.
D = 6'-00"
R = 955.37
T = 171.58'
L = 339.44

Located Both
Points - painted
→ 15' on
S.E.R.
6-9-82
SWR

CURVE DATA
PLAN-1923-24
P.I. = STA. 98+97.9
 $\Delta = 14^{\circ}-45'$ LT.
D = 6'-00"
R = 955.37
T = 123.53
L = 245.63

(CONTINUED)
FILM

PERSONNEL TITLE PERSONNEL TITLE

COUNTY Wood

DATE OK-4-9-57

S. R. #110

WEATHER

SEC. A-C

TEMP.

DESCRIPTION

(OFF Highway System)

JOB NO.

LEFT

CENTER LINE

RIGHT

Sta. 13+89.67

P.I. Δ = 0°-29' Lt.

S. edge pau't. 0.0'

Fd. 3/4" iron rod 7' under pau't.

R/W mon. set

N.

31.18'

E/W mon. set

S.W.

37.42'

N.W. to shiner in cable pole

42.30'

#500

P.I. Sta. 0+00 1/4 line

No angle

S. edge pau't on line

(Did not find)

#501

P.I. Sta. 27+16.87

Cor. stone 1' to S. edge pau't.

Δ = 0°-15' Lt.

(W. stone)

#502

Could not

mon. N.W.

37.33'

mon. N.E.

41.41'

} West stone

P.I. Sta. 27+01.87

on cor. stone 1' to S. edge pau't.

No angle

(E. stone)

#503

Locate

mon. N.W.

48.0'

mon. N.E.

32.87'

} East stone

P.I. Sta. 40+14.1

Δ = 0°-1'-30" Rt.

Cor. stone, Fd. R.P. spc.

S. edge pau't. 0.0'

#504

Shi. E.N.E.

70.75'

27.50' & Shi. S.

41.93'

41.73'

R/W mon. N.W.

R/W mon. S.W.

PERSONNEL TITLE PERSONNEL TITLE

COUNTY Wood

DATE 4-9-57

S. R. #110

WEATHER

SEC. A, C

TEMP.

DESCRIPTION

LEFT

CENTER LINE

RIGHT

JOB NO.

P.I. Sta. 66+30.60

$\Delta = 0^\circ - 01' \text{ R.}$

on N. & S. line & E. & W. line
1' to S. edge pav't.

Fd. 1/2" I. rod 6" under pav't.

#505

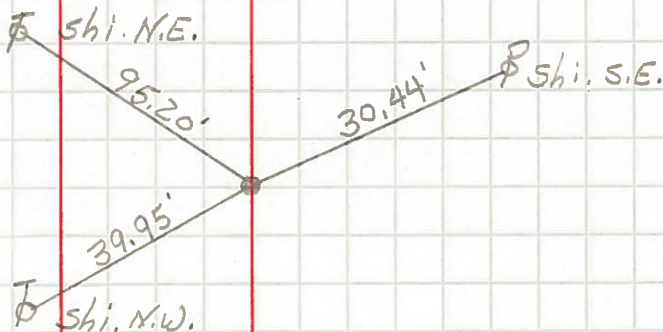
monument S.W.	36.93'
monument S.E.	37.10'
N. to shi. in oak stump	40.58'
N.E. to shi. T.P.	44.49'

(Benschoter Rd.)

Fd. I. pipe. Set R.P. spt.
18" in S.E. pav't.

#506

369.20'
Co. Distance



P.I. Sta. 79+

$\Delta = ?$ Cor. stone 2" under
pav't. 'X' in top, - P.K. nail

Shiner in T.P. N.W.	56.90
Shiner in P.P. S.E.	32.95'
R/W mon. S.E.	47.03'
R/W mon. N.E.	47.05'
N.E. cor. brick Ho. S.W. 1 st brick	52.50'

P.I. Sta. 92+93.31

$\Delta = 0^\circ - 02' \text{ R.}$

(Armbruster Rd.)

Fd. R.P. spt.

#507

