

O.D.O.T. DISTRICT 2 SURVEY OFFICE (USE ONLY)

PERSONNEL

REFERENCE NO. 8 C

SHEET 3 OF 22

NOTES RHOADES

DATE 3/30/22

ROUTE SR 65

H.C. NIESE

WEATHER WINDY

COUNTY WOOD

R.C. AUBLE

TEMP. 61°

TOWNSHIP GRAND RAPIDS

KETNER

SECTION 3

DWG BY RHOADES

PID 95796

T 5 N R 9 E

TYPE MONUMENT MAG/WASHER

ON SURFACE - ~~BELOW~~ ON

OFFSET ☉ PAVEMENT 2.4' ~~RT~~ : RT

7.4' TO RT EDGE PAVEMENT

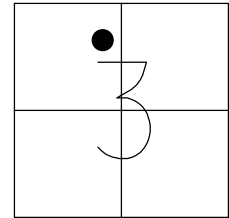
STATION: 220+00.44

HORZ. DATUM: NAD83 2011

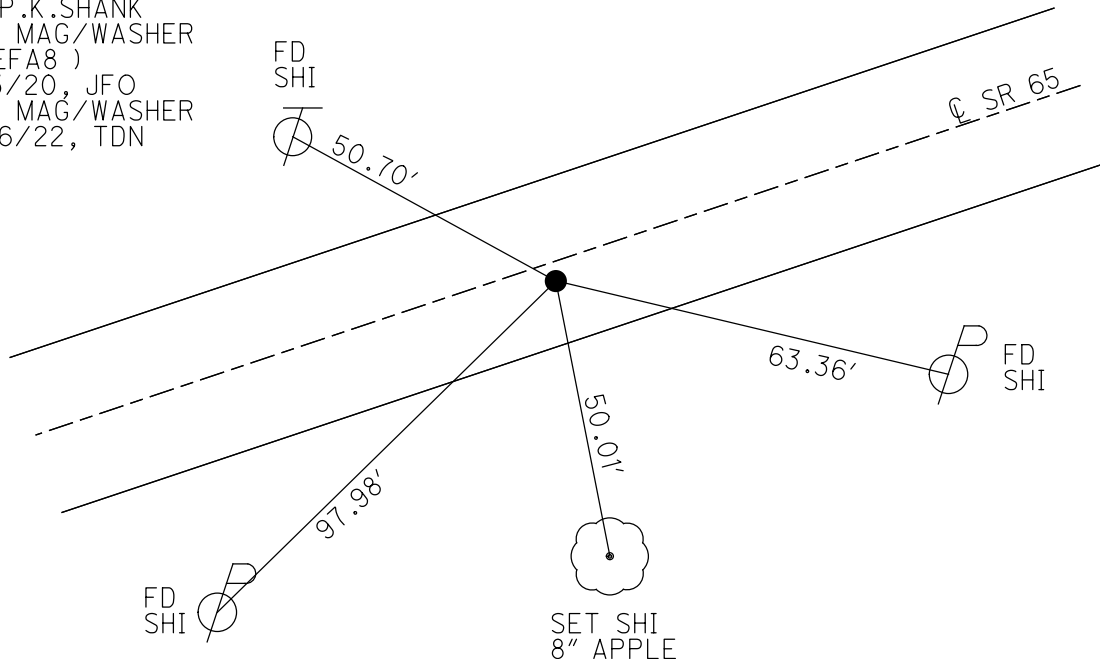
GEOID: NAVD88 2018

GRID: NORTHING: 645151.259

EASTING: 1608484.132



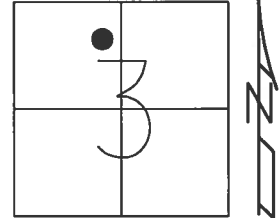
RECORD: P.I.  
 1923-1924 PLANS  
 STA. 119+49.75  
 $\Delta = 1^\circ 45' \text{ LT}$   
 SET P.K./WASHER  
 5/1/92, MB  
 FD P.K./WASHER  
 6/23/04, DCH  
 SET P.K./WASHER  
 9/17/04, RGN  
 FD P.K./WASHER  
 4/20/15, EBW  
 FD P.K.SHANK  
 SET MAG/WASHER  
 ( REFA8 )  
 11/3/20, JFO  
 SET MAG/WASHER  
 10/6/22, TDN



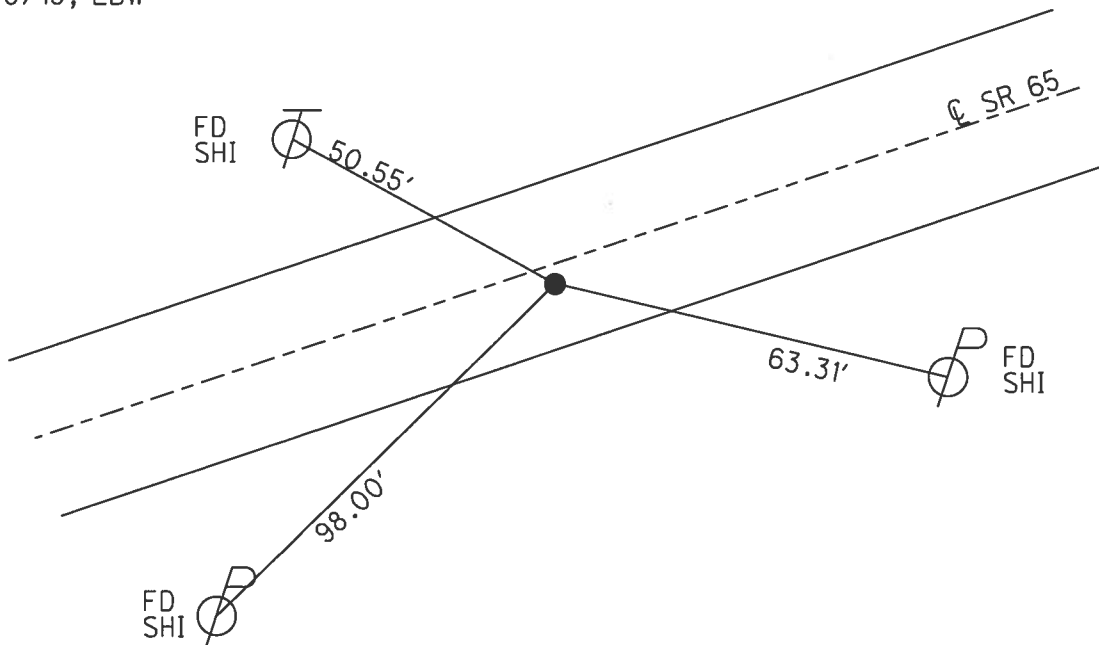
O.D.O.T. DISTRICT 2 SURVEY OFFICE (USE ONLY)

PERSONNEL \_\_\_\_\_ REFERENCE NO. 8 A SHEET 1 OF 6  
 NOTES RHOADES DATE 4/20/15 ROUTE SR 65  
 H.C. WESTFALL WEATHER WINDY COUNTY WOOD  
 R.C. O'DONNELL TEMP. 55° TOWNSHIP GRAND RAPIDS  
 \_\_\_\_\_ SECTION 3  
 \_\_\_\_\_ T 5 N R 9 E

TYPE MONUMENT P.K./WASHER  
 ON SURFACE - ~~BELOW~~ ON \_\_\_\_\_  
~~LEFT~~ - ☉ PAV'T - RIGHT 2.4'  
7.4' TO RT EDGE PAVEMENT  
 S.L.M. 220+22.59  
 Grid: Northing: - \_\_\_\_\_ Easting: - \_\_\_\_\_



RECORD: P.I.  
 1923-1924 PLANS  
 STA. 119+49.75  
 $\Delta = 1^\circ 45' \text{ LT}$   
 SET P.K./WASHER  
 5/1/92, MB  
 FD P.K./WASHER  
 6/23/04, DCH  
 SET P.K./WASHER  
 9/17/04, RGN  
 FD P.K./WASHER  
 4/20/15, EBW



# O.D.O.T. DISTRICT 2 SURVEY OFFICE

PERSONNEL \_\_\_\_\_

REFERENCE NO. 8-C

SHEET 33 OF 49

NOTES Nuhter

H.C. Homan

R.C. Adkins

DATE 6-23-04

WEATHER Sunny

TEMP. 70°F

ROUTE S.R. 65

COUNTY Wood

TOWNSHIP Grand Rapids

SECTION 3

T5 N R 9 E

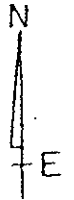
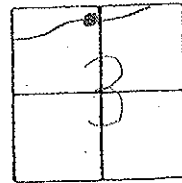
TYPE MONUMENT PK/w

ON SURFACE - ~~BELOW~~ surface

~~BELOW~~ - RIGHT 24' Rt

7.4' TO Rt. EDGE PAVEMENT

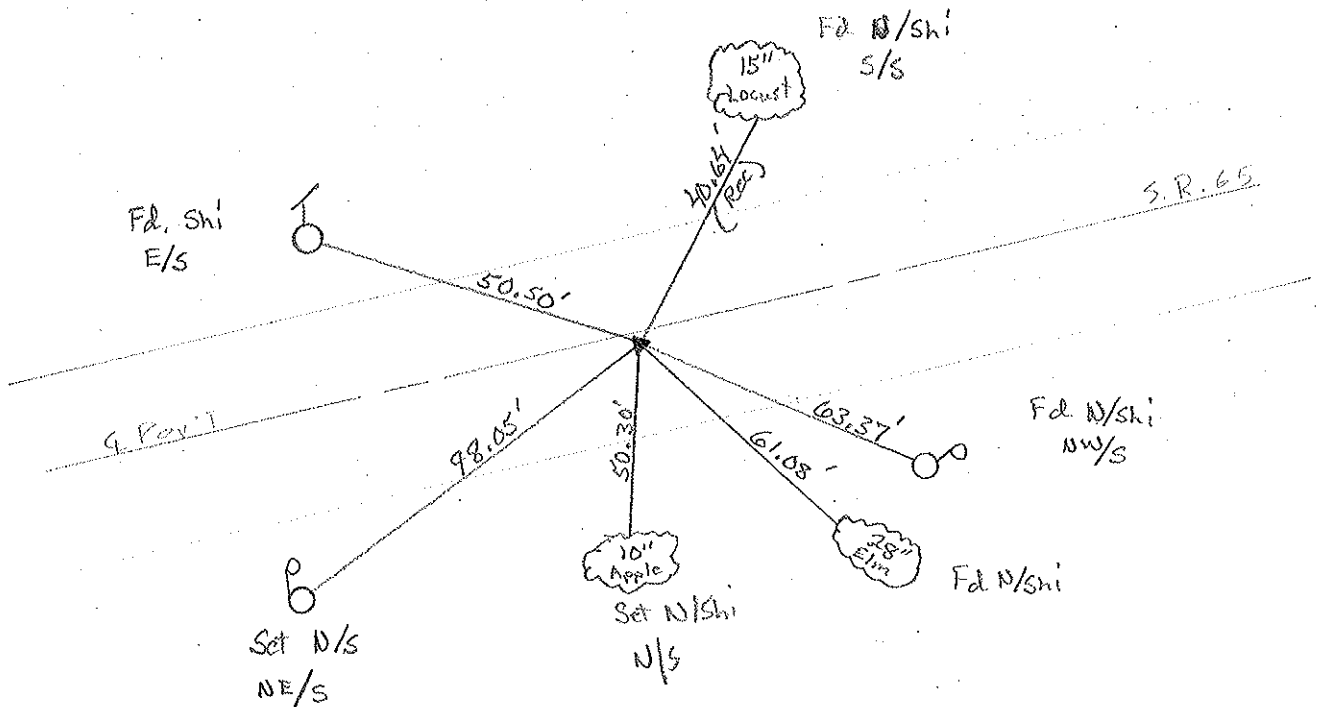
S.L.M. 220+03



Record: Plans 1923-1924  
 P.I. = 119+49.75  
 $\Delta = 1^\circ 45' 17''$   
 Meas.  $\Delta$  1972 =  $1^\circ 45'$

Set PK/wisher  
 5-1-92  
 MB

Set PK/w  
 9-17-04  
 RGN



# O.D.O.T. DISTRICT 2 SURVEY OFFICE

PERSONNEL

REFERENCE NO. 8 C

SHEET 18 OF 34

NOTES BARNHISEL

H.C. VAN DUSEN

R.C. BARNHISEL

DATE 4-20-92

WEATHER SUNNY

TEMP. +75°

ROUTE SR 65

COUNTY WOOD

TOWNSHIP GRAND RAPIDS

SECTION 3

T.S. N 9 E

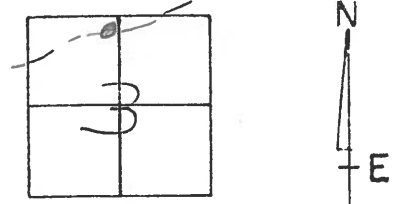
TYPE MONUMENT Sm RR Spk

~~ON~~ SURFACE - BELOW 1 1/2"

~~LEFT - &~~ PAV'T. - RIGHT 2.4

2.6 TO RT EDGE PAVEMENT

S.L.M. 220+02



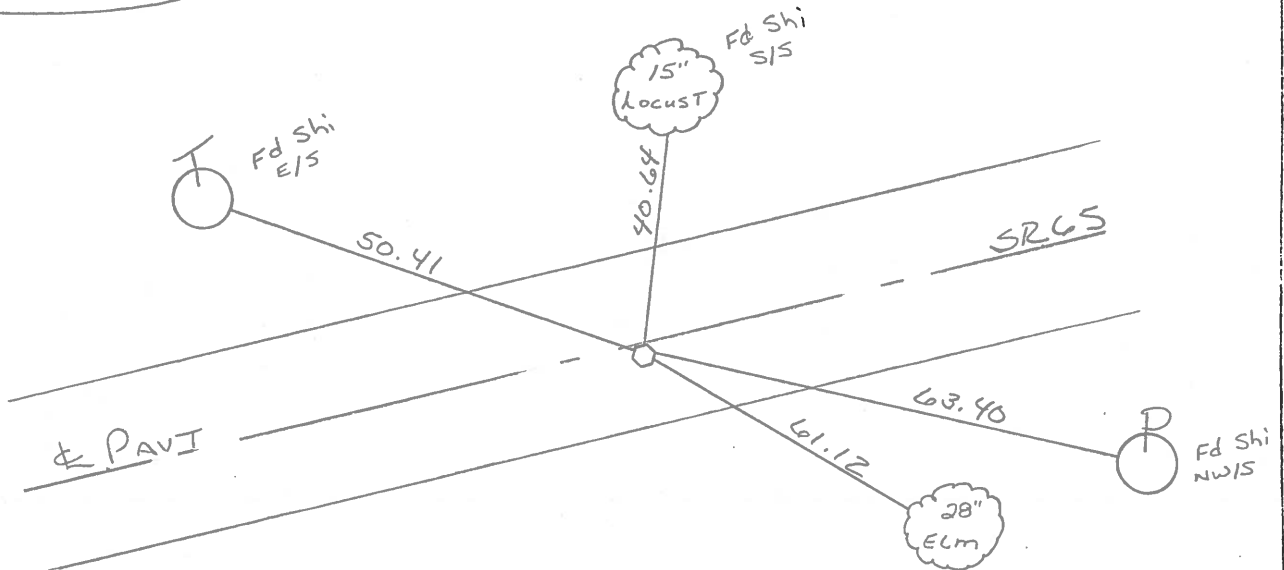
RECORD: PLANS 1923-1924

P.I. = 119+49.75

$\Delta = 1^{\circ}-45'$  LT

MEAS  $\Delta$  1972 =  $1^{\circ}-45'$

SET PK & WASHEE  
5-1-92  
MB



ODOT. DISTRICT 2 SURVEY OFFICE

SHEET 26 OF     

County Wood S.R. 65

Township Grand Rapids

Section 3

T5N, R9E

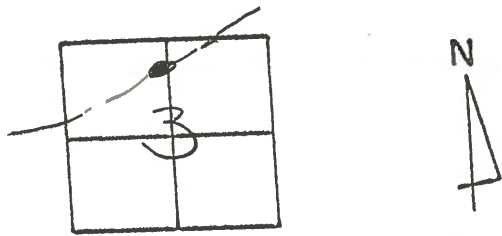
Personnel Hoffman  
Loehrke  
Householder

Date 6-14-82  
12-10-81

Weather Clear

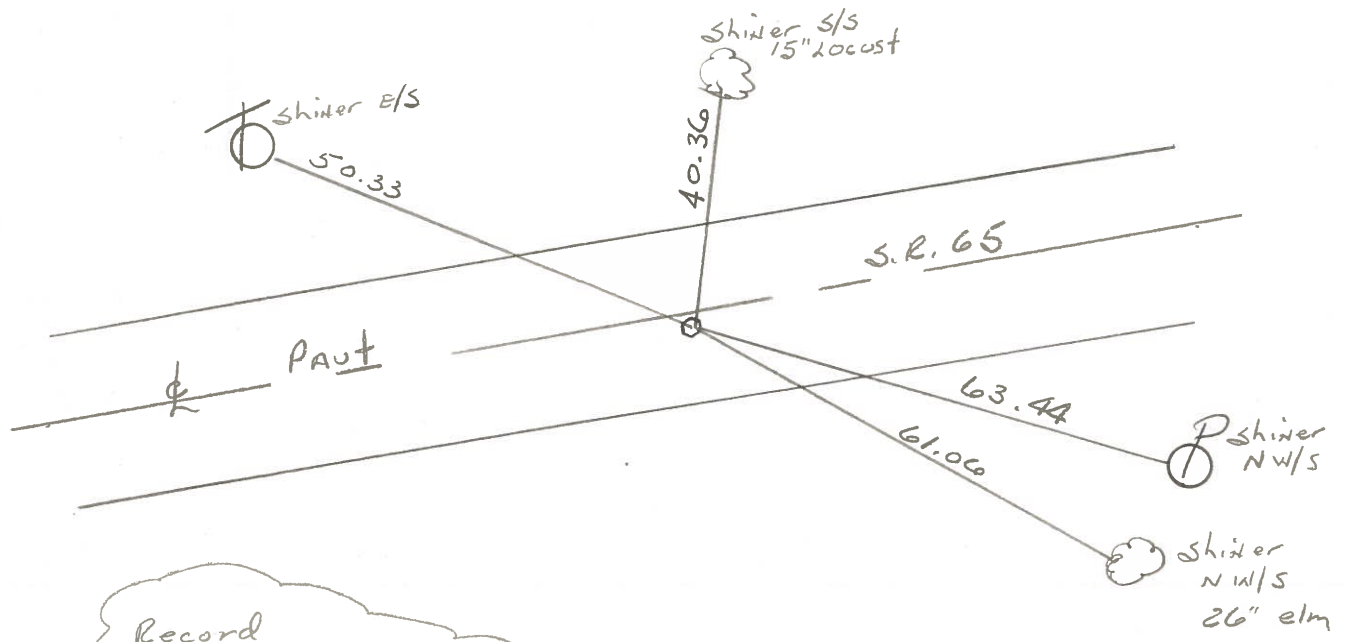
Temp. +28°

(8-C)



Fd. small R.R. spike @ surface  
 1.8' rt of & PAUT.  
 7.2' to S. EP.  
 11.0' to N.E.P.

Project stat ± 220+13



Record  
 P.I. = 119 + 49.75  
 Δ = 10 - 45' Lt. Plain &  
 Meas 1972

PERSONNEL TITLE PERSONNEL TITLE

COUNTY Wood

DATE 4-9-57

S. R. #110

WEATHER

SEC.

TEMP.

DESCRIPTION

LEFT

CENTER LINE

RIGHT

JOB NO.

P.I. Sta. 119+61.50

$\Delta = 0^\circ - 8' \text{ Rt.}$

E.P. spt. 18" on on S.E. part of  
Weston Rd.

Plw mon. N.E.

N.E.

48.79

Plw mon. S.E.

S.E.

48.65

#508

Shi. N.E.

38.37'

Fd. roof-nail-set E.P. spt

28.65'

21.95'

N.W. to S.W.  
Cor. N. Hdwl.

S.W. to N.E. Cor. of  
S. Hdwl.

Plw mon N.E.

42.80'

Sta. 139+59

Set P.K. nail -  
E.P. spt.

#509

Shi. in E.N.E.

29.50'

36' maple

55.58'

Shi. in 30' maple  
W.N.W.

669.68'

'X' cut in Hdwl N.E.

Shi. S.S.E.

23.43'

30.20'

P.I. Sta. 146+28.68

$\Delta = 0^\circ - 2' \text{ Lt.}$

Fd. iron rod 8' under  
pump t.

32.95'

19.90'

'X' cut in Hdwl. S.W.

Shi. N.N.W.

#510