

O.D.O.T. DISTRICT 2 SURVEY OFFICE (USE ONLY)

PERSONNEL

REFERENCE NO. 9 B

SHEET 6 OF 22

NOTES RHOADES

DATE 4/11/15

ROUTE SR 65

H.C. NIESE

WEATHER FAIR

COUNTY WOOD

R.C. KETNER

TEMP. 55°

TOWNSHIP WASHINGTON

O'DONNELL

SECTION 34

DWG BY RHOADES PID 95796

T 5 N R 9 E

TYPE MONUMENT MAG/WASHER

ON SURFACE - ~~BELOW~~ ON

OFFSET 0.4' RT : RT

9.4' TO RT EDGE PAVEMENT

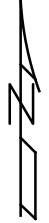
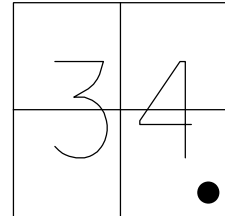
STATION: 234+20.25

HORZ. DATUM: NAD83 2011

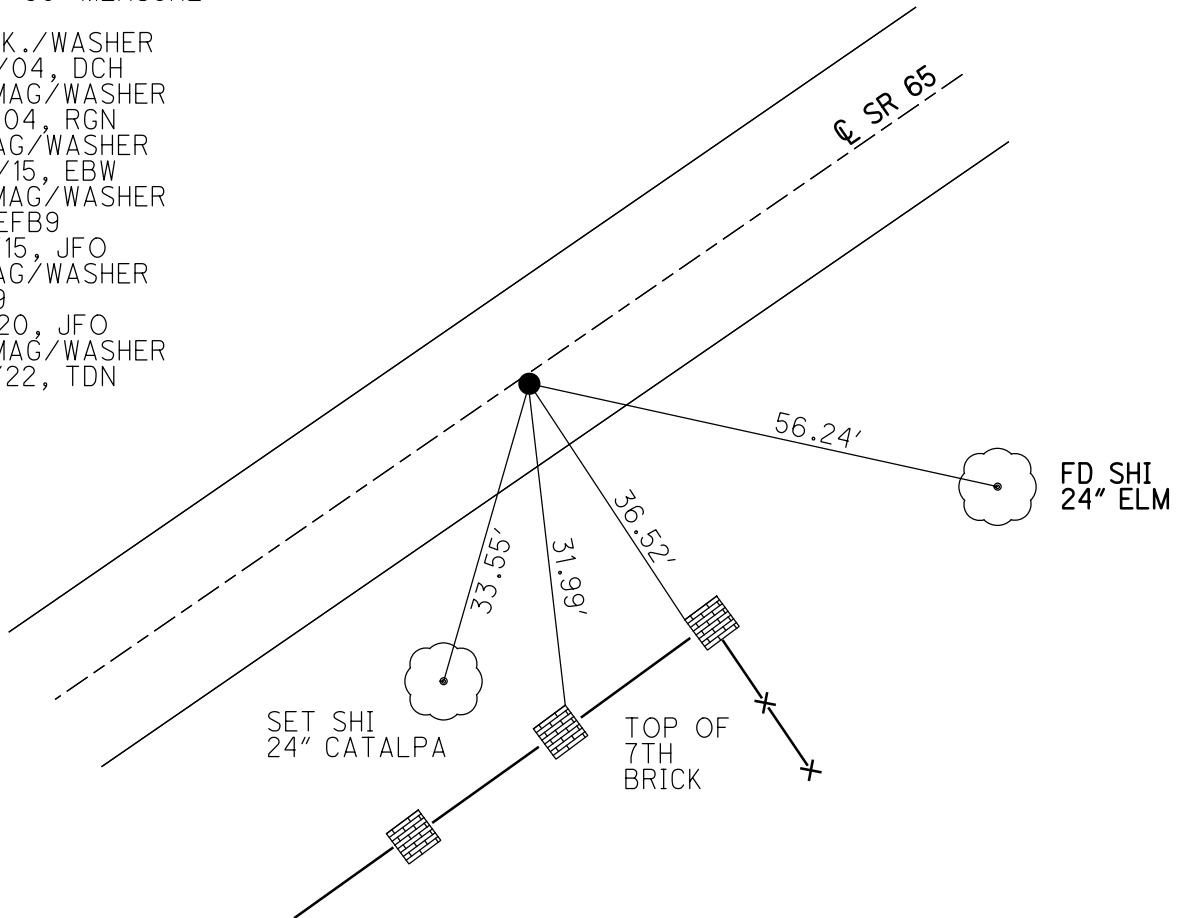
GEOID: NAVD88 2018

GRID: NORTHING: 645930.717

EASTING: 1609666.187



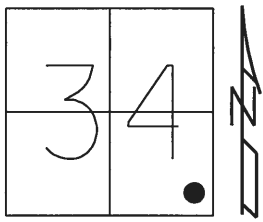
RECORD: P.I.
 STA. 133+69
 $\Delta = 1^\circ 35'$ PLAN
 $\Delta = 1^\circ 35'$ MEASURE
 1972
 FD P.K./WASHER
 6/23/04, DCH
 SET MAG/WASHER
 9/17/04, RGN
 FD MAG/WASHER
 4/20/15, EBW
 SET MAG/WASHER
 NEWREFB9
 9/16/15, JFO
 FD MAG/WASHER
 REFB9
 11/3/20, JFO
 SET MAG/WASHER
 10/6/22, TDN



O.D.O.T. DISTRICT 2 SURVEY OFFICE (USE ONLY)

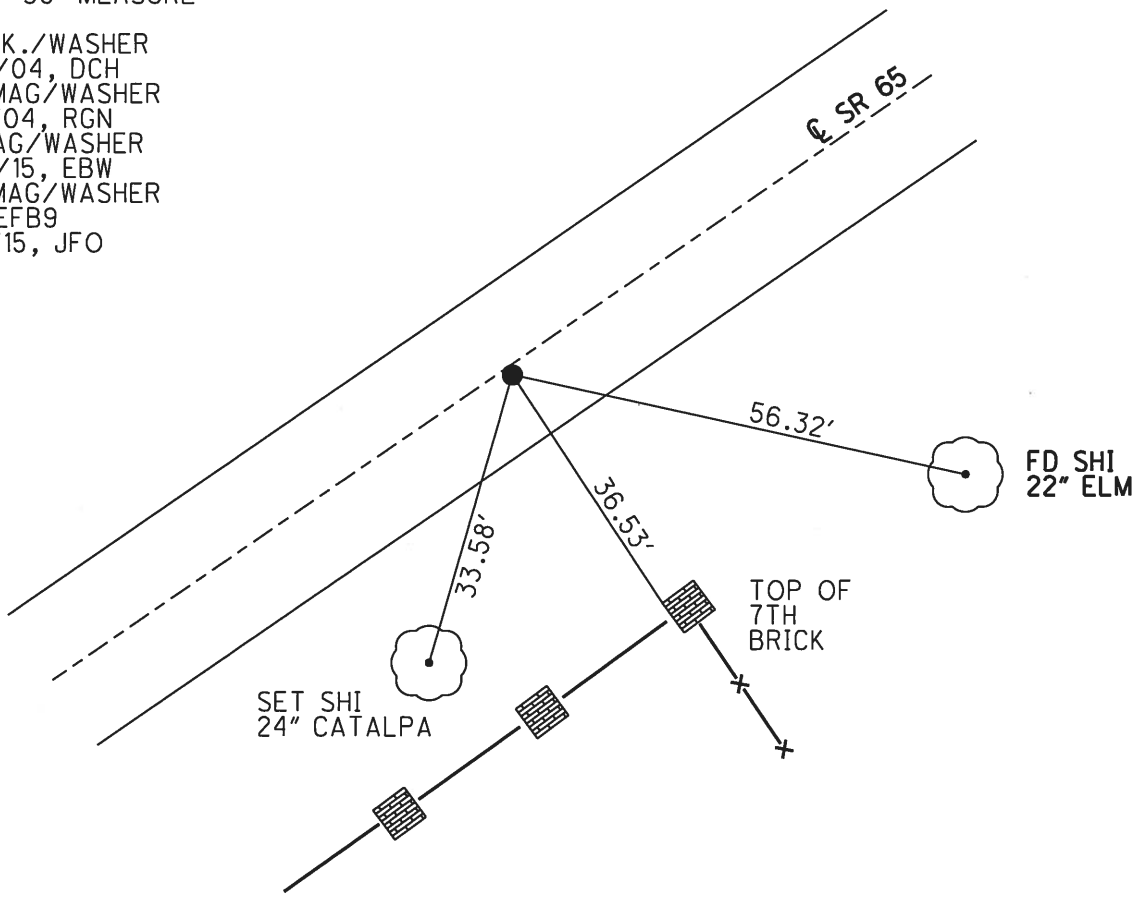
PERSONNEL _____ REFERENCE NO. 9 B SHEET 4 OF 6
 NOTES RHOADES DATE 4/20/15 ROUTE SR 65
 H.C. WESTFALL WEATHER WINDY COUNTY WOOD
 R.C. O'DONNELL TEMP. 55° TOWNSHIP WASHINGTON
 _____ SECTION 34
 _____ T 6 N R 9 E

TYPE MONUMENT MAG/WASHER
 ON SURFACE - ~~BELOW~~ ON
~~LEFT~~ - C PAV'T - RIGHT 0.4'
9.4' TO RT EDGE PAVEMENT
 S.L.M. 234+42.58



Grid: Northing: 645930.708 Easting: 1609666.190

RECORD: P.I.
 STA. 133+69
 $\Delta = 1^\circ 35'$ PLAN
 $\Delta = 1^\circ 35'$ MEASURE
 1972
 FD P.K./WASHER
 6/23/04, DCH
 SET MAG/WASHER
 9/17/04, RGN
 FD MAG/WASHER
 4/20/15, EBW
 SET MAG/WASHER
 NEWREFB9
 9/16/15, JFO



O.D.O.T. DISTRICT 2 SURVEY OFFICE

PERSONNEL

REFERENCE NO. 9B

SHEET 36 OF 49

NOTES Nuhfer

H.C. Homan

R.C. Atkins

DATE 6-23-04

WEATHER Sunny

TEMP. +70°

ROUTE S.R. 65

COUNTY Wood

TOWNSHIP Washington

SECTION 34

T. 6 N. R. 9 E.

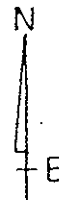
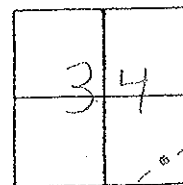
TYPE MONUMENT PX/W

ON SURFACE - ~~BELOW~~ surface

~~NEAR PAV'T~~ - RIGHT 0.4' Rt.

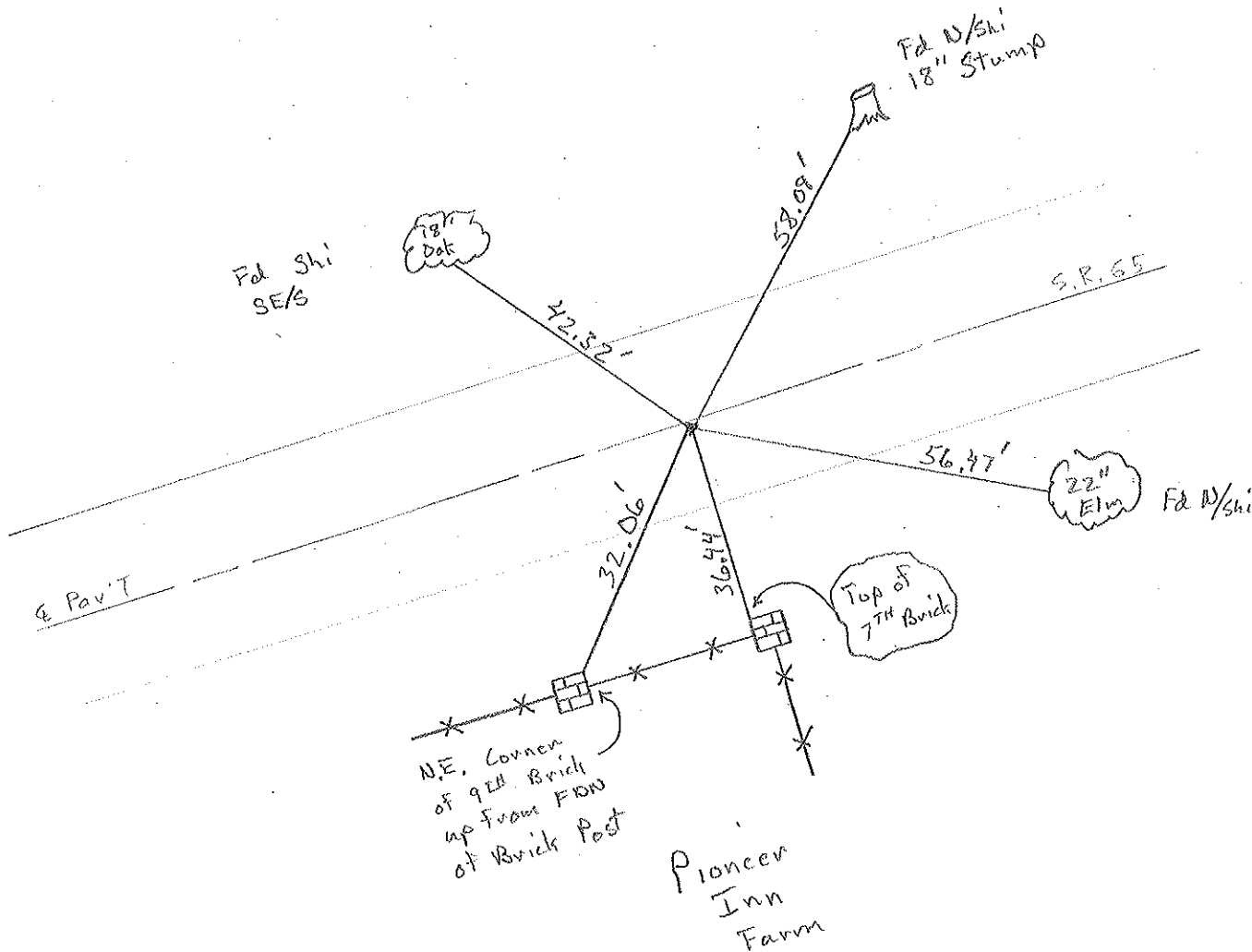
9.4' TO R. EDGE PAVEMENT

S.L.M. 234 + 22



Record
P.J. 133+69
Δ = 1°-35' Plan
Δ meas 1972 = 1°-35'

Set Mag/W.
9-17-04
RGN



O.D.O.T. DISTRICT 2 SURVEY OFFICE

PERSONNEL

REFERENCE NO. 98

SHEET 21 OF 24

NOTES BARNHISEL

H.C. LAN DUSEN

R.C. BARNHISEL

DATE 4-20-92

WEATHER SNOWY

TEMP. +70°

ROUTE SR 65

COUNTY WOOD

TOWNSHIP WASHINGTON

SECTION 34

T 6 N R 9 E

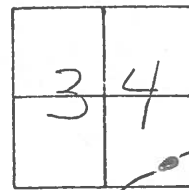
TYPE MONUMENT Sm RR Spk

~~ON~~ SURFACE - BELOW 1 1/2"

~~LEFT~~ - C PAV'T. - RIGHT 0.3

9.3 TO RT EDGE PAVEMENT

S.L.M. 234+21



RECORD:

P.I. 133+69

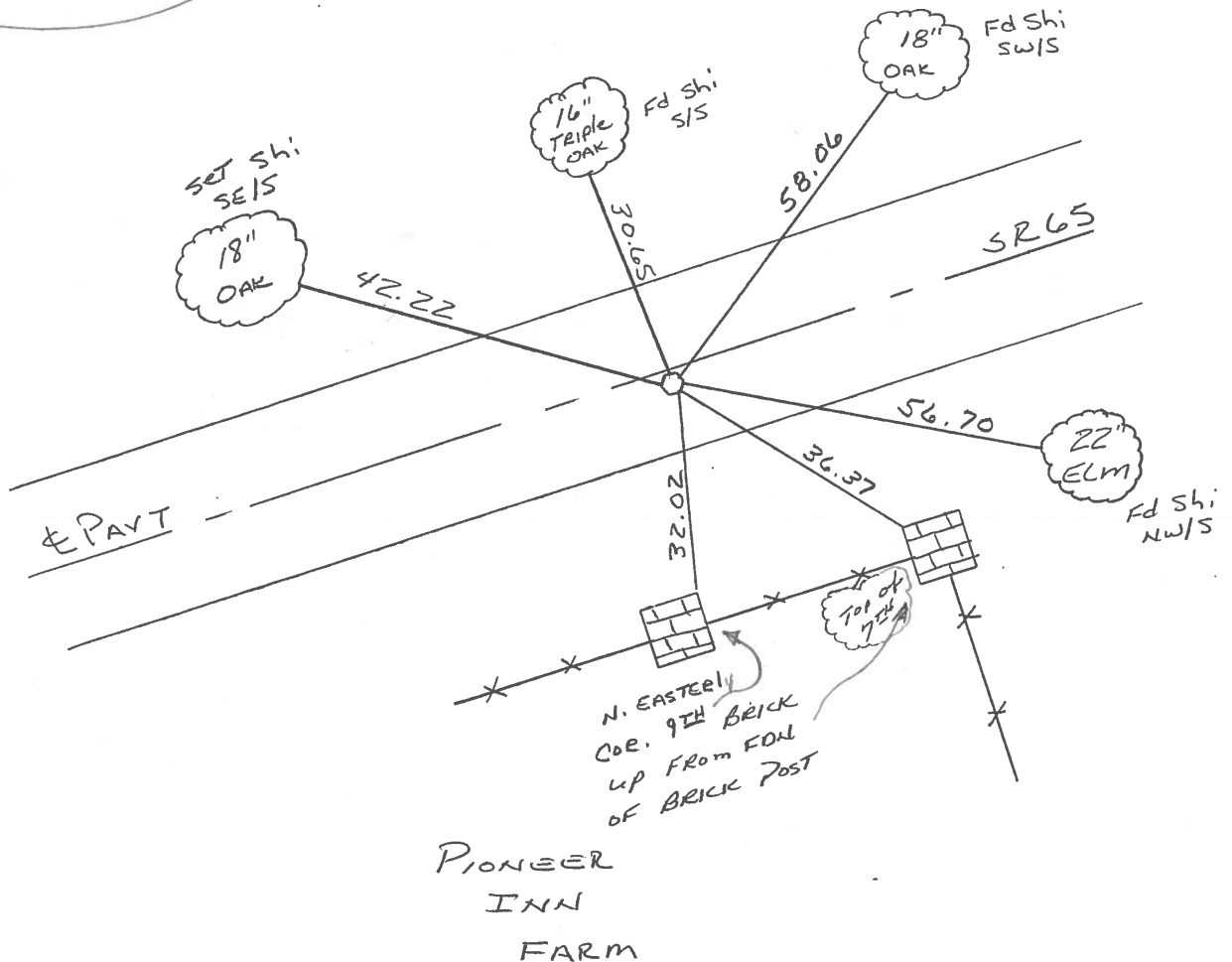
$\Delta = 10-35'$ PLAN

Δ MEAS 1972 = $10-35'$

SET PK & WASHER

5-1-92

MB



PIONEER
INN
FARM

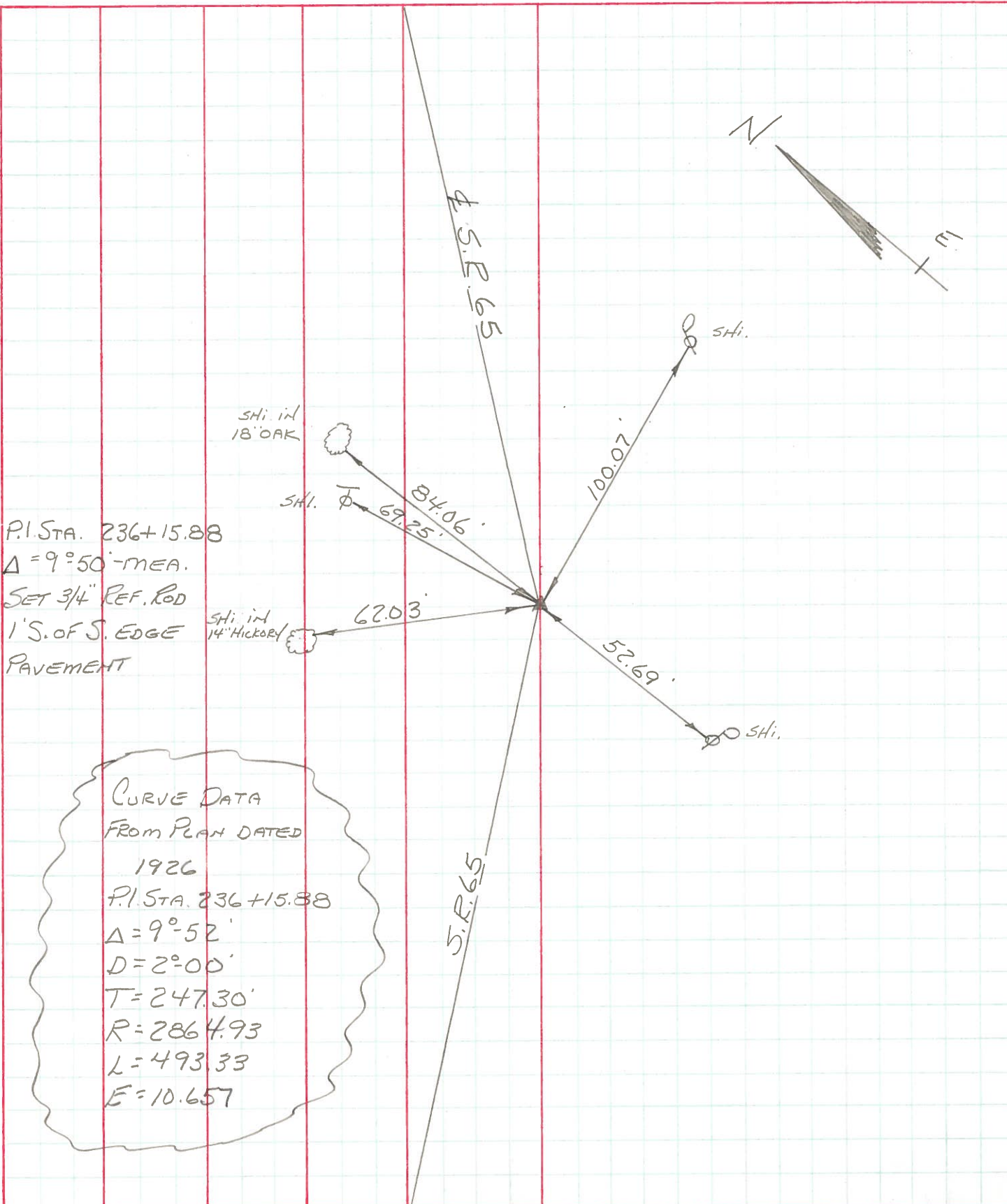
PERSONNEL BURNSIDE TITLE _____
 PERSONNEL SMITH TITLE _____

COUNTY Wood DATE 10-26-72

S. R. 65 WEATHER CLEAR

SEC. WASHINGTON TWP TEMP. +35°

DESCRIPTION _____ LEFT _____ CENTER LINE _____ RIGHT _____ JOB NO. _____



County Wood S.R. 65

Date 6-14-82
12-11-81

Township Washington

Weather clear

Section 34

Temp. +30°

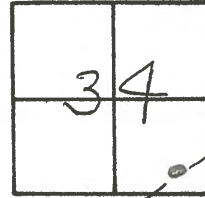
T, N, R, E

Personnel Hoffman

Loehrke

Householder

(9-B)



Fd. Small R.R. Spk @ surface

Project Sta ± 234+33

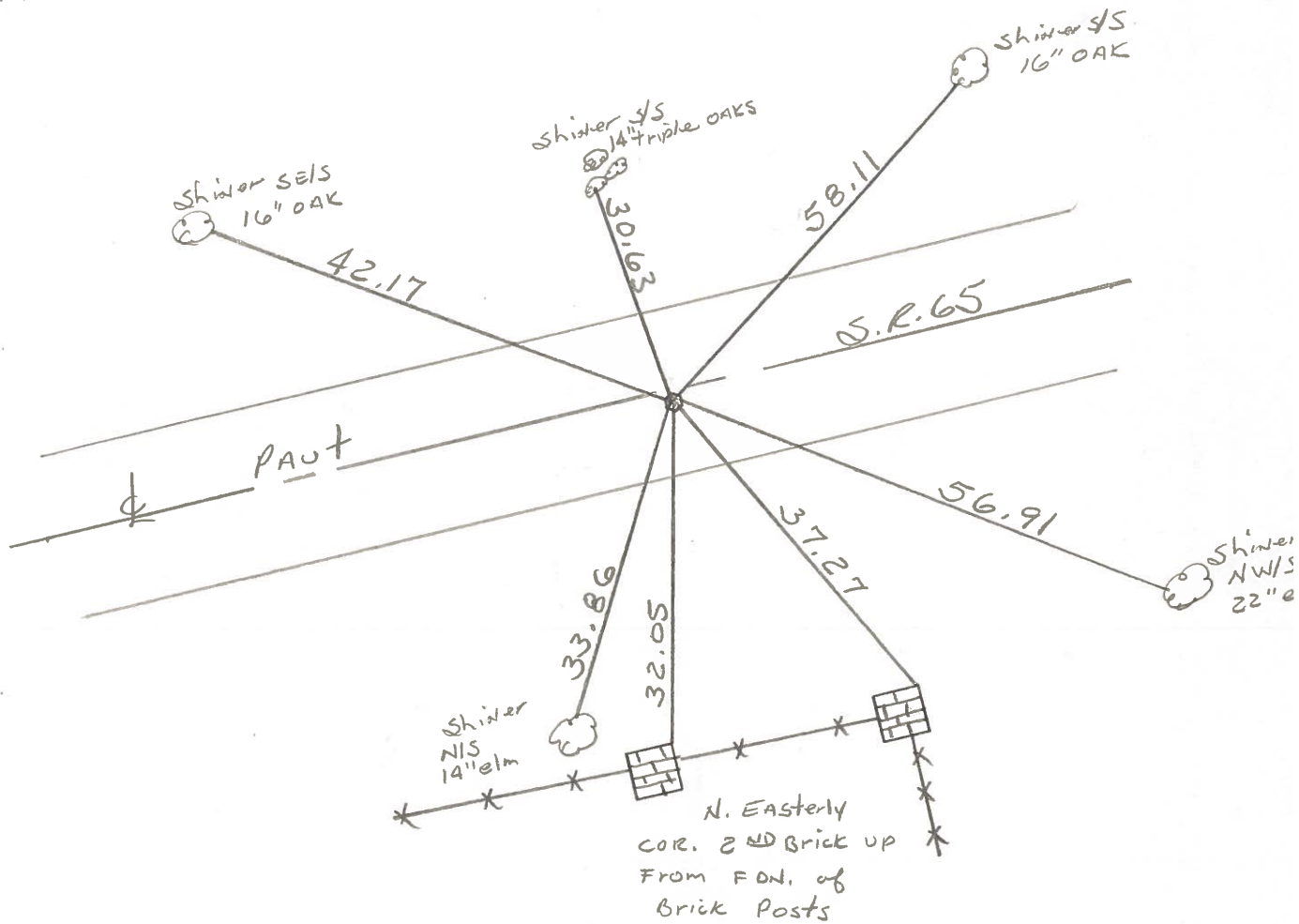
0.3' rt. of & PAUT

8.3' to S.E.P.

9.7' to N.E.P.

Δ = 10'-35' - PLAN & MEAS (1972)

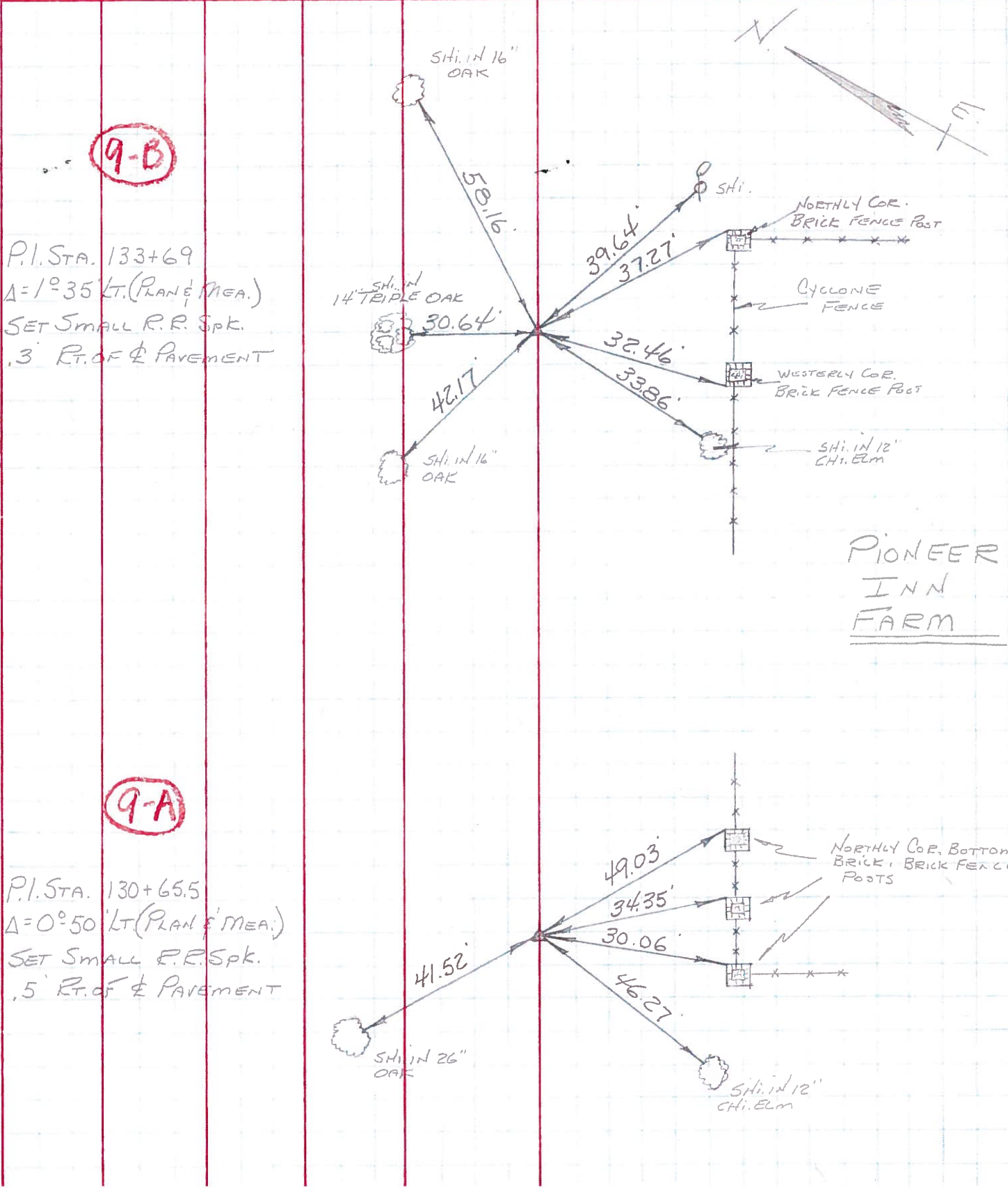
P.I. STA. 133+69



PERSONNEL	TITLE	PERSONNEL	TITLE
BURNSIDE			
SMITH			
BOWERS			

COUNTY WOOD DATE 10-12-72
 S. R. 65 WEATHER PT. CLOUDY
 SEC GRAND RAPIDS TWP TEMP. +60°

DESCRIPTION ESTABLISH & REFERENCE P.I.'S JOB NO. _____



PIONEER INN FARM