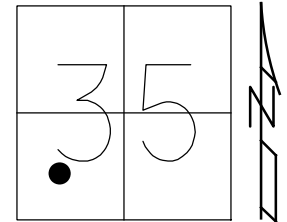


O.D.O.T. DISTRICT 2 SURVEY OFFICE (USE ONLY)

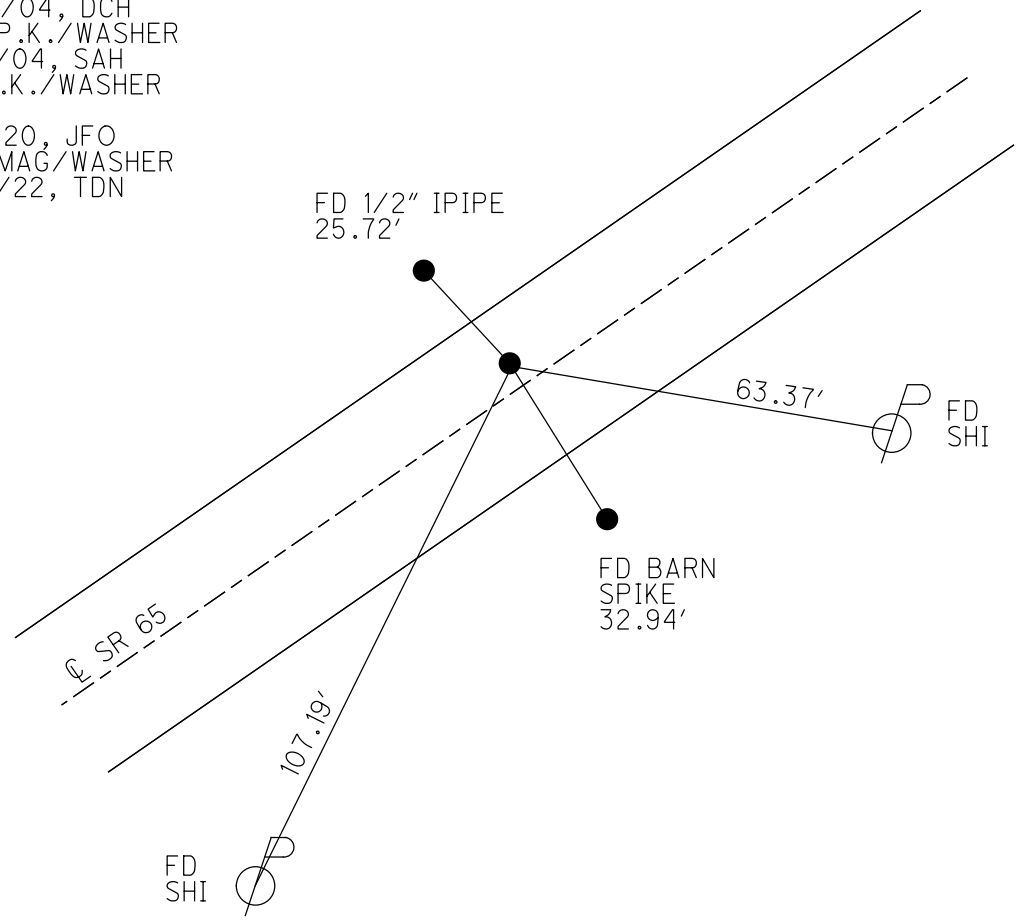
PERSONNEL \_\_\_\_\_ REFERENCE NO. 11 SHEET 9 OF 22  
 NOTES RHOADES DATE 4/11/22 ROUTE SR 65  
 H.C. NIESE WEATHER FAIR COUNTY WOOD  
 R.C. KETNER TEMP. 55° TOWNSHIP WASHINGTON  
O'DONNELL SECTION 35  
 DWG BY RHOADES PID 95796 T 6 N R 9 E

TYPE MONUMENT P.K./WASHER  
~~ON SURFACE~~ - BELOW 3.5"  
 OFFSET  $\odot$  PAVEMENT 3.4' LT : ~~RT~~  
7.2' TO LT EDGE PAVEMENT  
 STATION: 251+15.79



HORZ. DATUM: NAD83 2011 GEOID: NAVD88 2018  
 GRID: NORTHING: 647014.283 EASTING: 1610970.063

RECORD: P.I.  
 STA. 150+64.6  
 $\Delta = 2^\circ 39' RT$   
 1939  
 FD P.K./WASHER  
 6/23/04, DCH  
 SET P.K./WASHER  
 9/16/04, SAH  
 FD P.K./WASHER  
 REF11  
 11/3/20, JFO  
 SET MAG/WASHER  
 10/6/22, TDN



# O.D.O.T. DISTRICT 2 SURVEY OFFICE

PERSONNEL

REFERENCE NO. 11

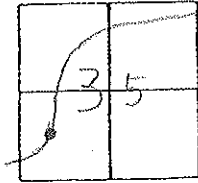
SHEET 38 OF 49

NOTES Nutfer  
 H.C. Homan  
 R.C. Atkins

DATE 6-23-04  
 WEATHER Sunny  
 TEMP. +70°F

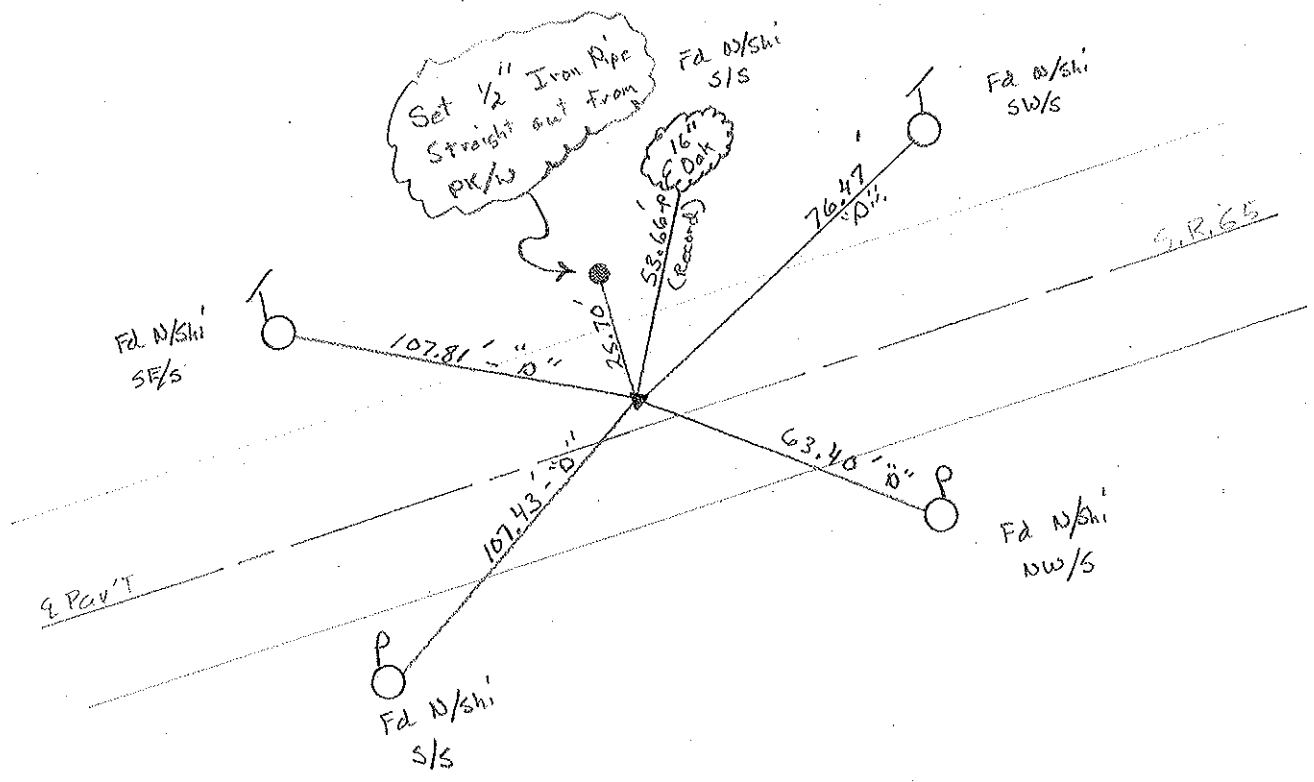
ROUTE S.R. 65  
 COUNTY Wood  
 TOWNSHIP Washington  
 SECTION 35  
 T 6 N R 9 E

TYPE MONUMENT PK/W  
ON SURFACE - ~~BELOW~~ Surface  
LEFT - ~~PAV'T.~~ - RIGHT 3.4' Lt.  
7.3' TO Lt. EDGE PAVEMENT  
 S.L.M. 251+16



Record:  
 P.I. 150+64.6  
 $\Delta = 2^\circ - 39' R$   
 $\Delta$  meas. 1972 =  $2^\circ - 39'$

Set Mag/W  
 9-16-04  
 SAH



# O.D.O.T. DISTRICT 2 SURVEY OFFICE

PERSONNEL

REFERENCE NO. 11

SHEET 23 OF 24

NOTES BARNHISEL

H.C. VAN DUSEN

R.C. BAERNHISEL

DATE 4-20-92

WEATHER SUNNY

TEMP. +70°

ROUTE SR 65

COUNTY WOOD

TOWNSHIP WASHINGTON

SECTION 35

T 6 N R 9 E

Set P.K. / WASHER  
5-1-92  
C.L.

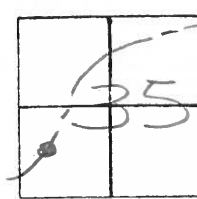
TYPE MONUMENT P.K. NAIL

ON SURFACE - BELOW yes

LEFT-☉ PAW'T. - RIGHT 1.8

7.3 TO LT EDGE PAVEMENT

S.L.M. 251 + 16

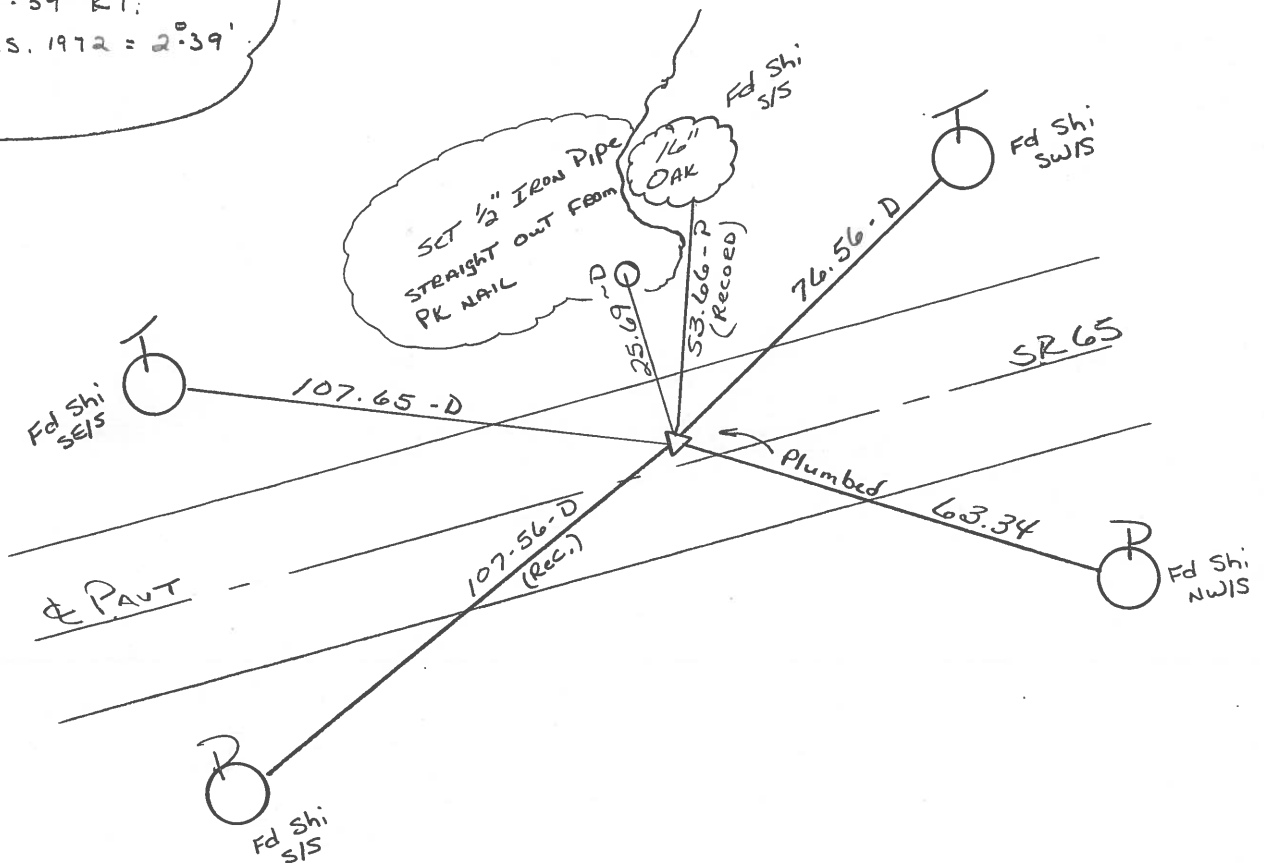


**RECORDS:**

P.I. 150 + 64.6

$\Delta = 2^{\circ} 39' RT$

$\Delta$  MEAS. 1972 =  $2^{\circ} 39'$



County Wood S.R. 65

Date 6-14-82  
12-11-81

Township Washington

Weather clear

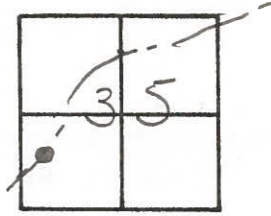
Section 35

Temp. +32°

T, N, R, E

Personnel Hoffman  
Loehrke  
Householder

11



Fd. Small R.R. SPR @ SURFACE

Project sta ± 251+29

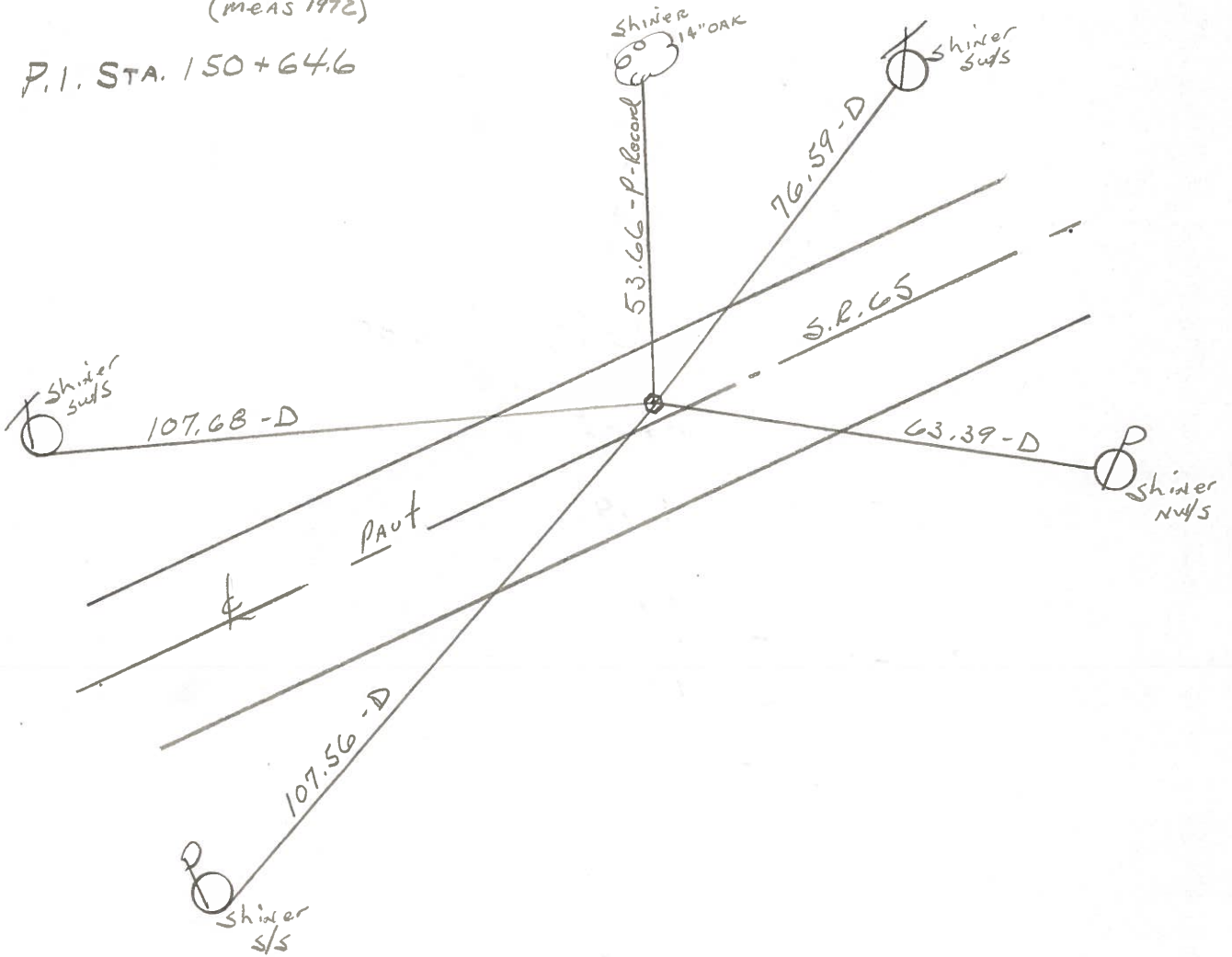
1.8' Lt. of PAUT

7.6' N.E.P.

11.0' S.E.P.

Δ = 2°-39' Rt. PLAN ±  
(MEAS 1972)

P.I. STA. 150+64.6



County Wood S.R. 65

Date 12-11-81

Township Washington

Weather clear

Section 35

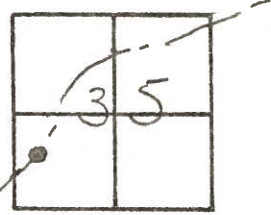
Temp. +32°

T, N, R E

Personnel Hoffman

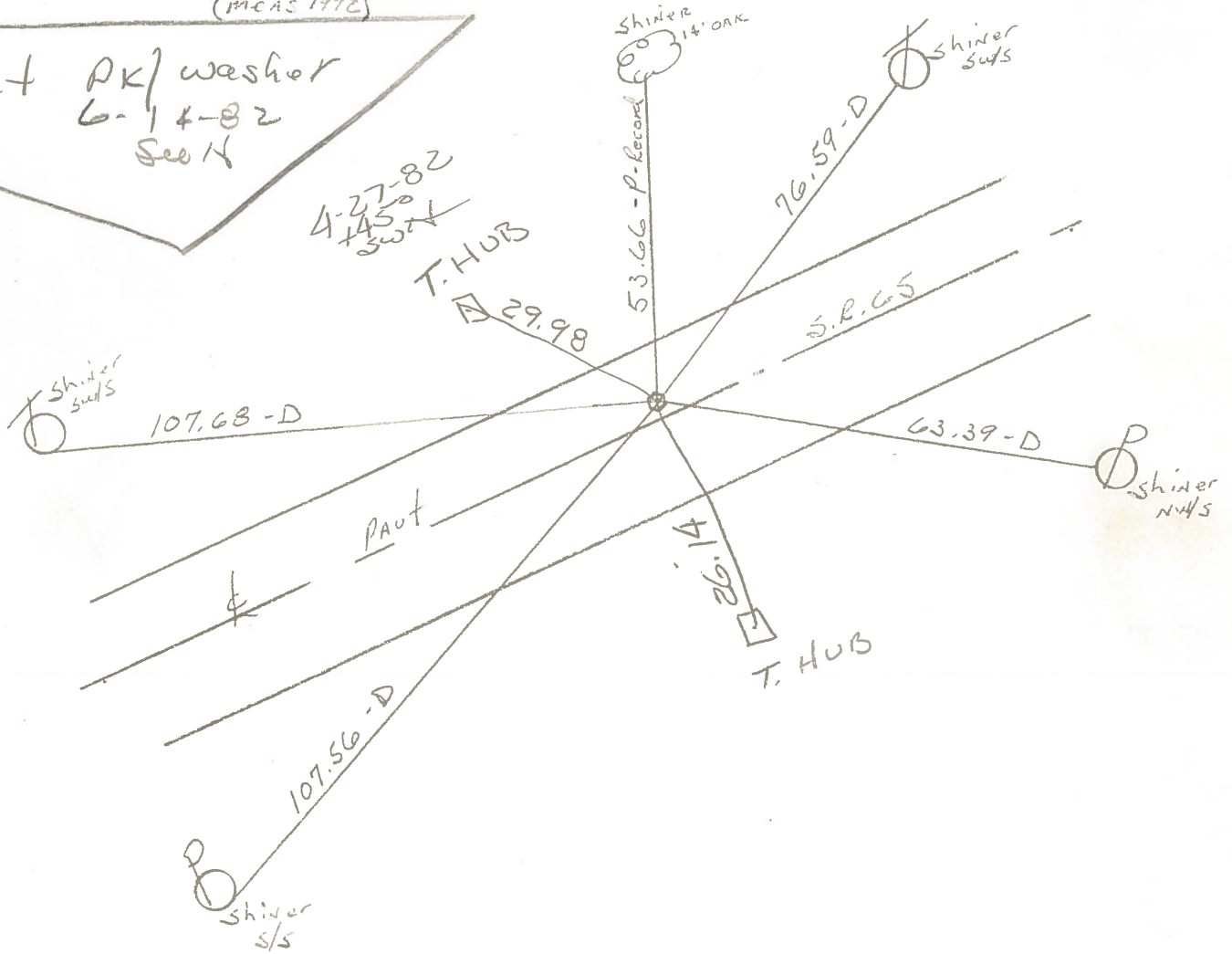
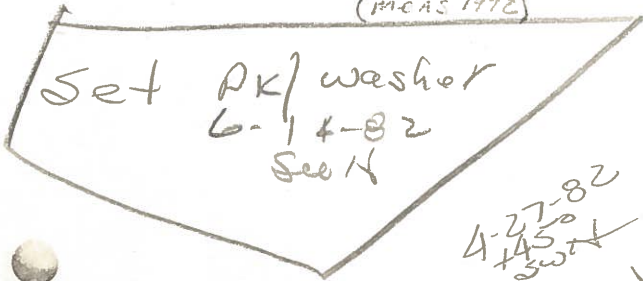
Loehrke

Householder



Fd. Small R.R. SPK @ SURFACE  
1.8' Lt. of 1/2 PAUT  
7.6' N.E.P.  
11.0' S.E.P.  
 $\Delta = 2^{\circ}-39'$  Rt. PLANT  
(MCAS 1972)

Project sta  $\pm$  251+29



PERSONNEL TITLE PERSONNEL TITLE

BURNSIDE  
SMITH

COUNTY Wood

DATE 10-26-72

S. R. 65

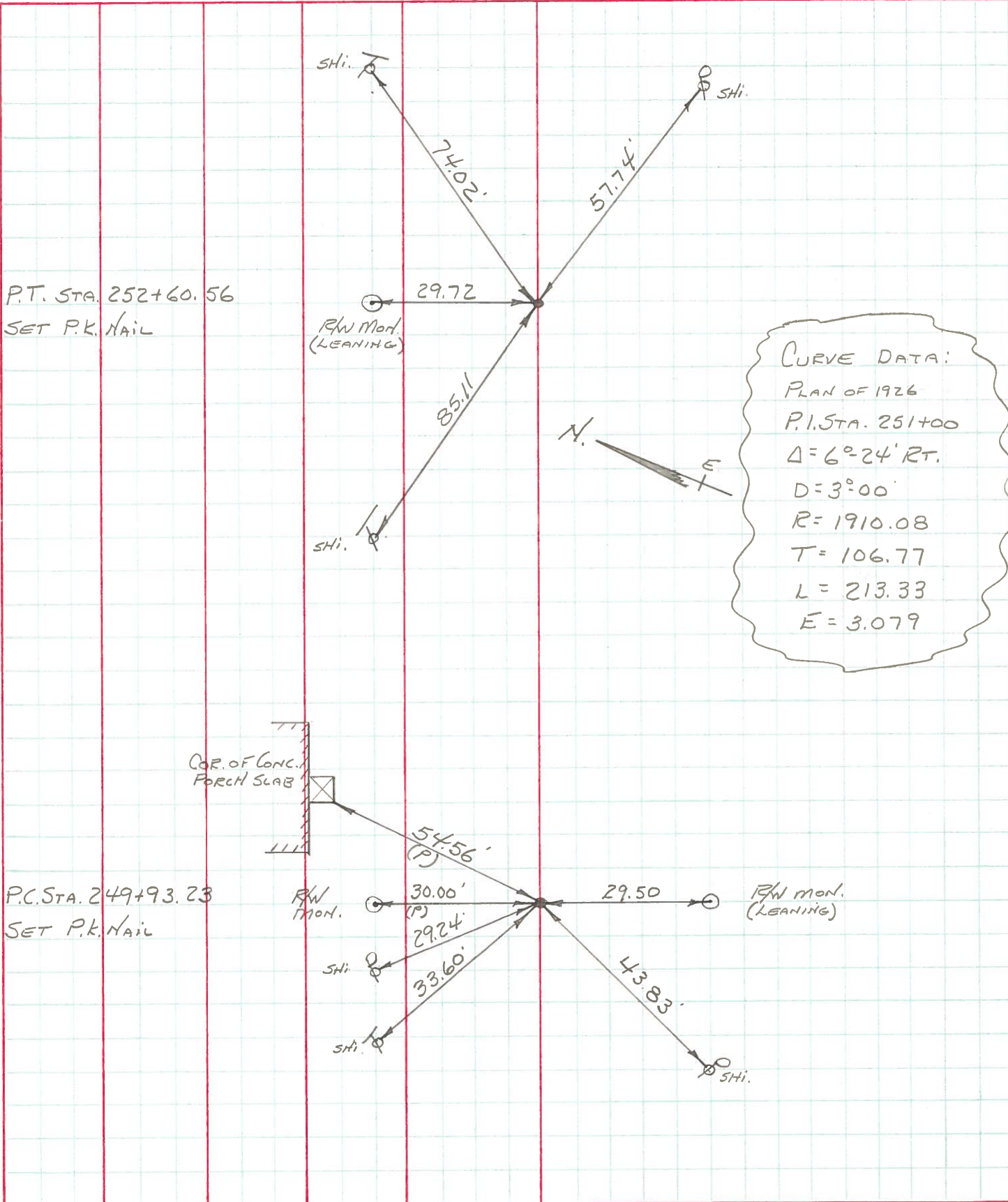
WEATHER CLEAR

SEC. WASHINGTON TWP TEMP. +50°

DESCRIPTION ESTABLISH & REF. CONTROL POINTS

JOB NO. \_\_\_\_\_

LEFT CENTER LINE RIGHT



County                      S.R. 65

Date 10-12-72

Township WASHINGTON

Weather CLOUDY

Section 35

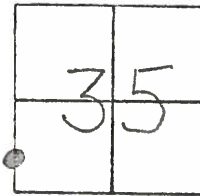
Temp. 56°

T6N, R9E

Personnel BURNSIDE

SMITH

BOWERS

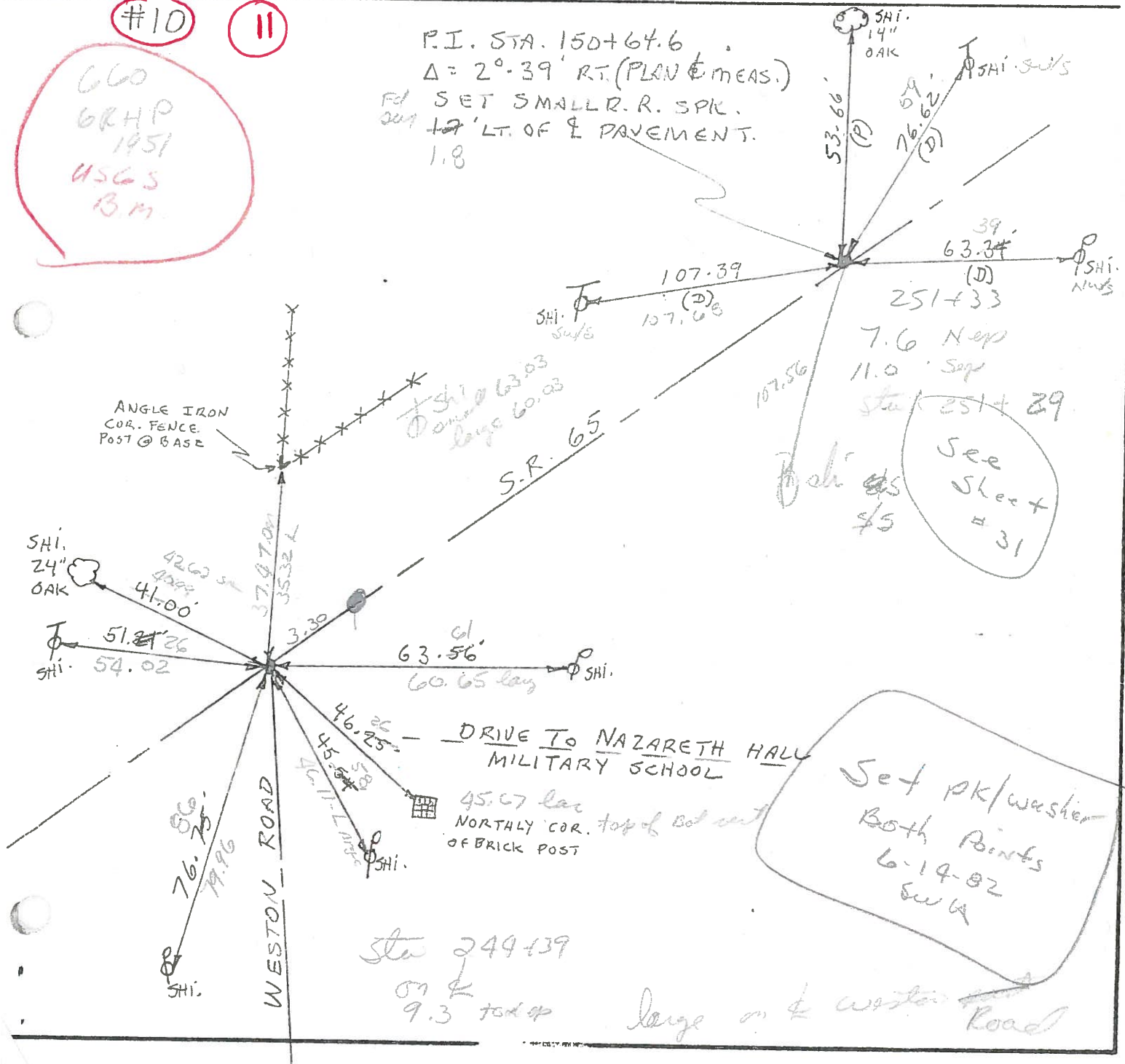


#10

11

660  
BRHP  
1951  
USGS  
B.M.

P.I. STA. 150+64.6  
Δ = 2°-39' RT. (PLAN & MEAS.)  
FD SET SMALL R.R. SPK.  
201 12' LT. OF & PAVEMENT.  
1.8



See Sheet # 31

Set pk/washer  
Both Points  
6-14-82  
SWA

Sta 249+39  
on &  
9.3 top of

large on & Weston Road

ODOT DISTRICT 2 SURVEY OFFICE

SHEET \_\_\_\_\_ OF \_\_\_\_\_

County \_\_\_\_\_ S.R. 65

Date 10-12-72

Township WASHINGTON

Weather CLOUDY

Section 35

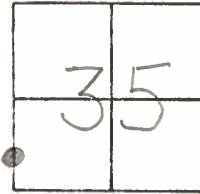
Temp. 56°

T6N, R9E

Personnel BURNSIDE

SMITH

BOWERS



#10  
11

P.I. STA. 150+64.6  
 $\Delta = 2^{\circ} 39'$  RT. (PLAN & MEAS.)  
 SET SMALL R.R. SPK.  
 1.7' LT. OF  $\frac{1}{2}$  PAVEMENT.

