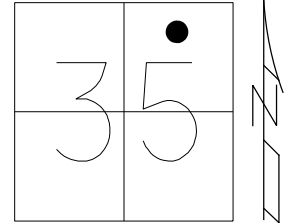


O.D.O.T. DISTRICT 2 SURVEY OFFICE (USE ONLY)

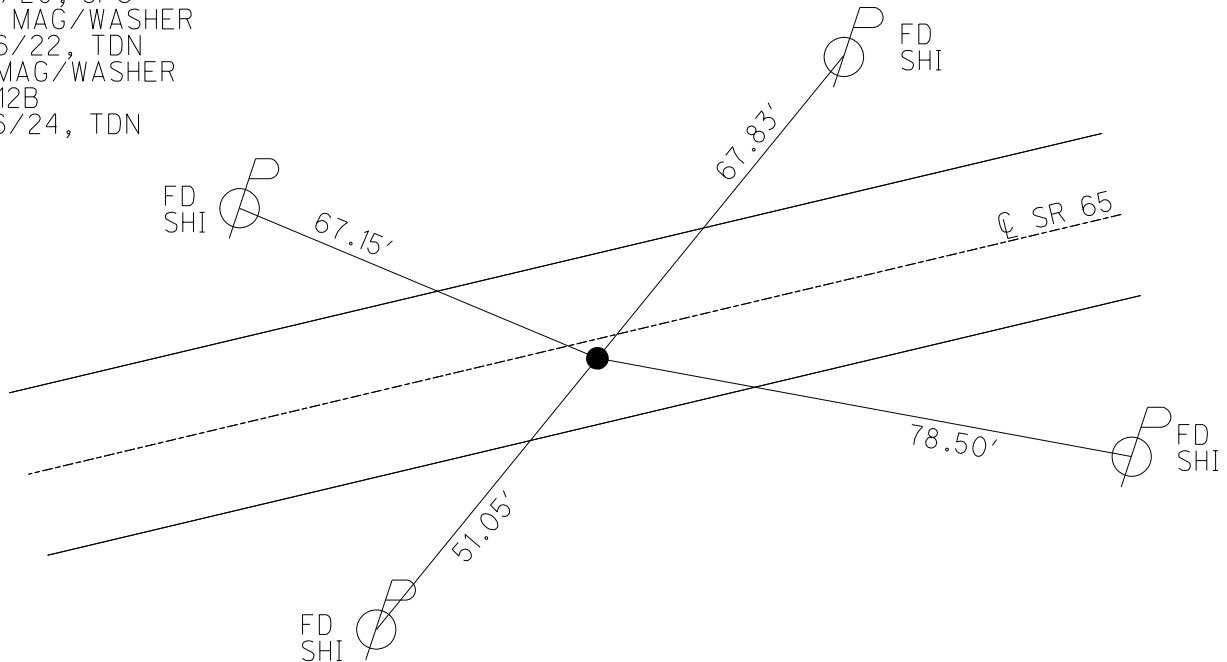
PERSONNEL _____ REFERENCE NO. 12 B SHEET 18 OF 22
 NOTES NIESE DATE 2/16/24 ROUTE SR 65
 H.C. NIESE WEATHER FAIR COUNTY WOOD
 R.C. ASTON TEMP. 32° TOWNSHIP WASHINGTON
 DWG BY RHOADES PID 93680 SECTION 35
 T 6 N R 9 E

TYPE MONUMENT MAG/WASHER
 ON SURFACE - ~~BELOW~~ ON _____
 OFFSET \odot PAVEMENT 1.6' ~~LT~~ : RT
8.4' TO RT EDGE PAVEMENT
 STATION: 292+21.11



HORZ. DATUM: NAD83 2011 GEOID: NAVD88 2018
 GRID: NORTHING: 649437.399 EASTING: 1614271.527

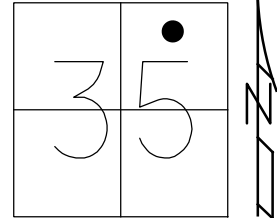
RECORD: P.I.
 STA. 194+74
 $\Delta = 3^\circ 35' \text{ LT}$
 $D = 2^\circ 00'$
 $R = 2864.93$
 $T = 89.2$
 $L = 179.16'$
 FD P.K./WASHER
 6/23/04, DCH
 SET MAG/WASHER
 9/16/04, SAH
 FD MAG/WASHER
 REFB12
 11/4/20, JFO
 SET MAG/WASHER
 10/6/22, TDN
 FD MAG/WASHER
 REF12B
 2/16/24, TDN



O.D.O.T. DISTRICT 2 SURVEY OFFICE (USE ONLY)

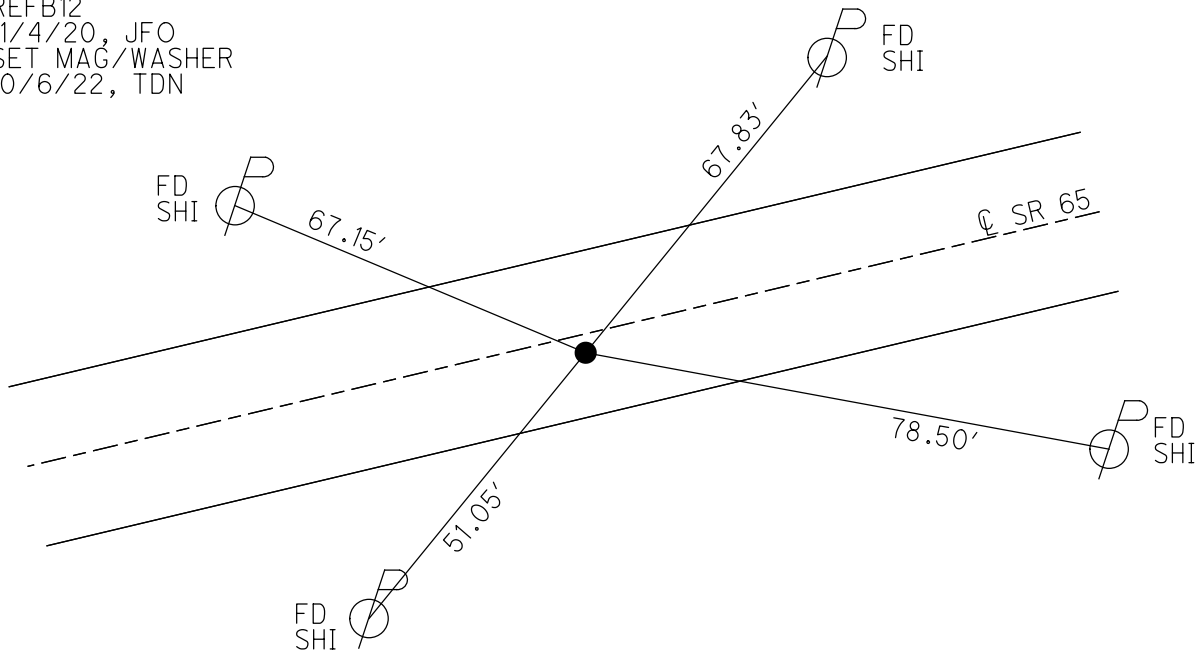
PERSONNEL _____ REFERENCE NO. 12 B SHEET 18 OF 22
 NOTES RHOADES DATE 4/27/21 ROUTE SR 65
 H.C. O'DONNELL WEATHER SUNNY COUNTY WOOD
 R.C. RHOADES TEMP. 70° TOWNSHIP WASHINGTON
 DWG BY RHOADES PID 95796 SECTION 35
 T 6 N R 9 E

TYPE MONUMENT MAG/WASHER
 ON SURFACE - ~~BELOW~~ ON
 OFFSET ☉ PAVEMENT 1.6' ~~±~~ : RT
8.4' TO RT EDGE PAVEMENT
 STATION: 292+21.11



HORZ. DATUM: NAD83 2011 GEOID: NAVD88 2018
 GRID: NORTHING: 649437.416 EASTING: 1614271.521

RECORD: P.I.
 STA. 194+74
 $\Delta = 3^\circ 35'$ LT
 $D = 2^\circ 00'$
 $R = 2864.93$
 $T = 89.2$
 $L = 179.16'$
 FD P.K./WASHER
 6/23/04, DCH
 SET MAG/WASHER
 9/16/04, SAH
 FD MAG/WASHER
 REFB12
 11/4/20, JFO
 SET MAG/WASHER
 10/6/22, TDN



O.D.O.T. DISTRICT 2 SURVEY OFFICE

PERSONNEL

REFERENCE NO. 12 B

SHEET 44 OF 49

NOTES Nuhfer

H.C. Homan

R.C. Atkins

DATE 6-23-04

WEATHER Sunny

TEMP. 75°F

ROUTE S.R. 65

COUNTY Wood

TOWNSHIP Washington

SECTION 35

T & N R 9 E

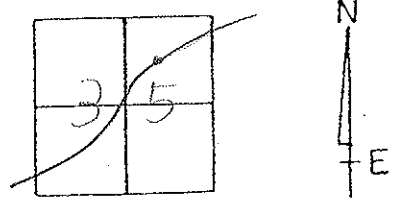
TYPE MONUMENT PK/W

ON SURFACE - ~~WOOD~~ surface

~~WOOD~~ (RIGHT) 1.6' Rt

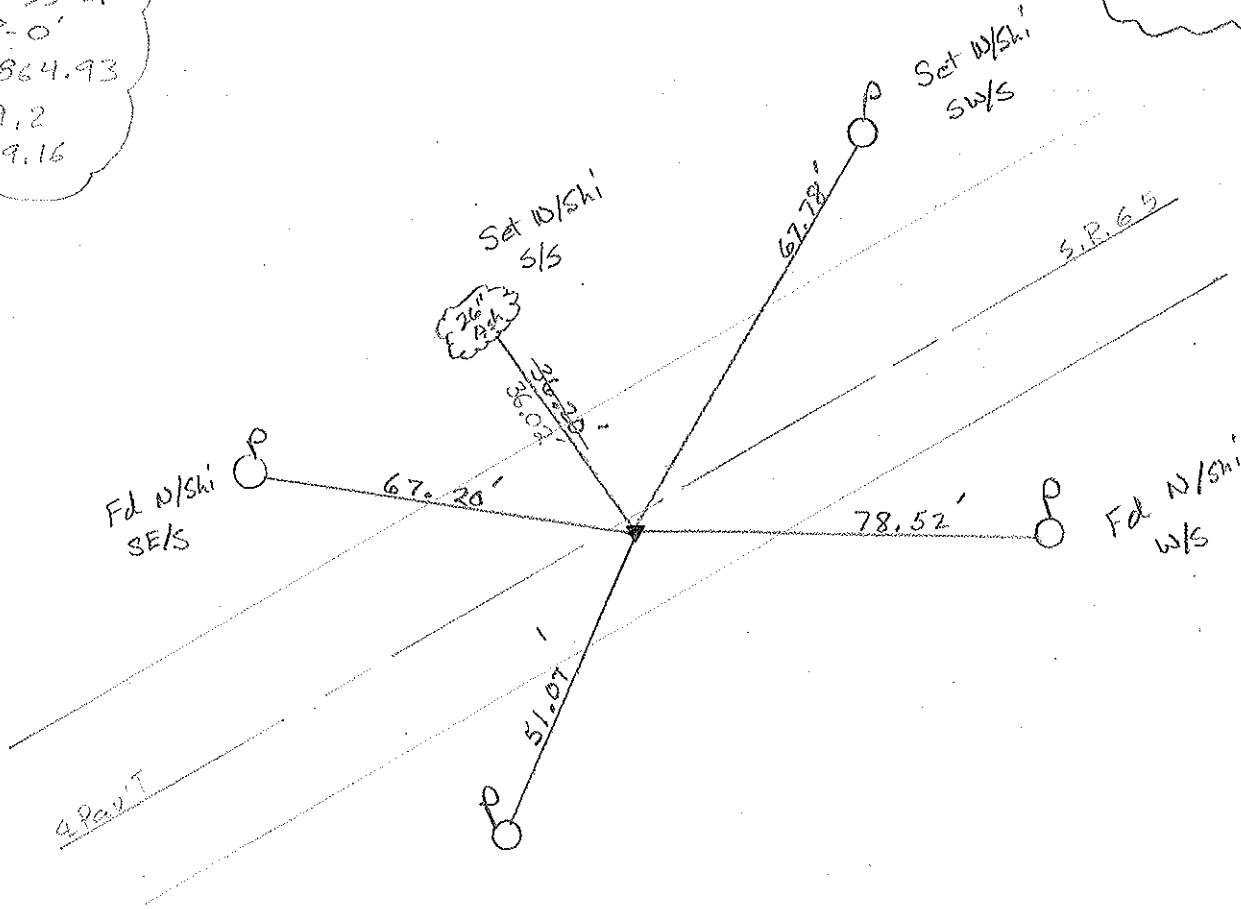
8.4' TO Rt. EDGE PAVEMENT

S.L.M. 292 + 25



Record:
 P.I. 194+74
 $\Delta = 3^\circ - 35' \text{ LT}$
 $D = 2^\circ - 0'$
 $R = 2864.93$
 $T = 89.2$
 $L = 179.16$

Set Mas/W
 9-16-04
 SAH



O.D.O.T. DISTRICT 2 SURVEY OFFICE

PERSONNEL

REFERENCE NO. 12 B

SHEET 29 OF 34

NOTES BARNHISEL

H.C. CUETIS

DATE 4-17-92

ROUTE 65

R.C. VAN DUSEN

WEATHER RAIN

COUNTY WOOD

Lochrke

TEMP. +50°

TOWNSHIP WASHINGTON

Rometo

SECTION 35

T6 NR 9 E

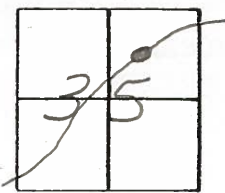
TYPE MONUMENT PK & WASHER ^{set} 5-1-92

ON SURFACE - BELOW yes C.L.

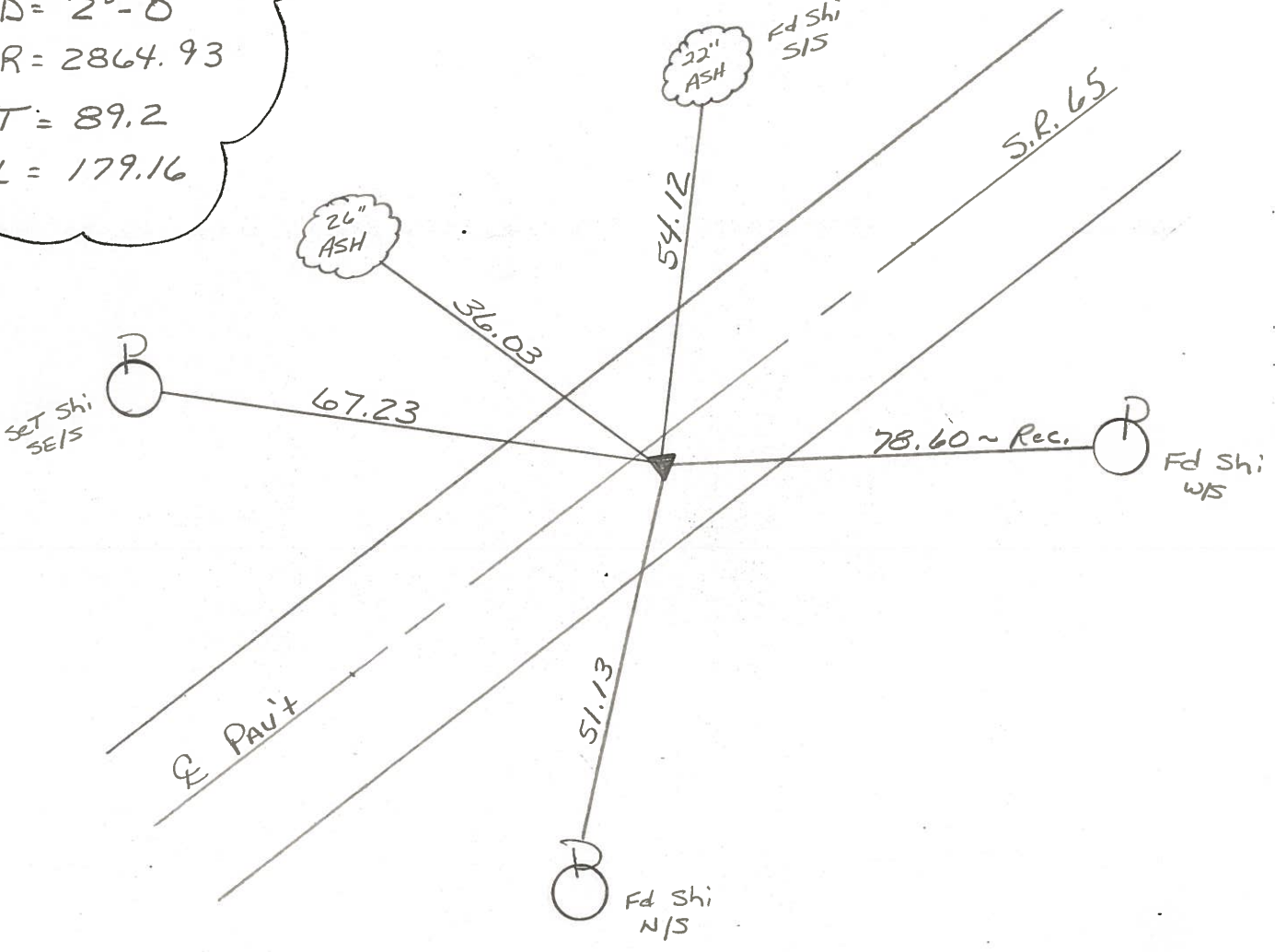
~~LEFT~~ - PAV'T. - RIGHT 1.4

2.5 TO RT EDGE PAVEMENT

S.L.M. 292 + 25



Record:
 P.I., 194+74
 $\Delta = 3^{\circ} - 35' \text{ LT}$
 $D = 2^{\circ} - 0'$
 $R = 2864.93$
 $T = 89.2$
 $L = 179.16$



OD.O.T. DISTRICT 2 SURVEY OFFICE

SHEET 37 OF

County Wood S.R. 65

Date 6-14-82
12-14-81

Township Washington

Weather cloudy

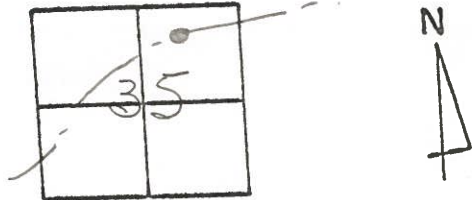
Section 35

Temp. +34°

C.N, R.E

12-B

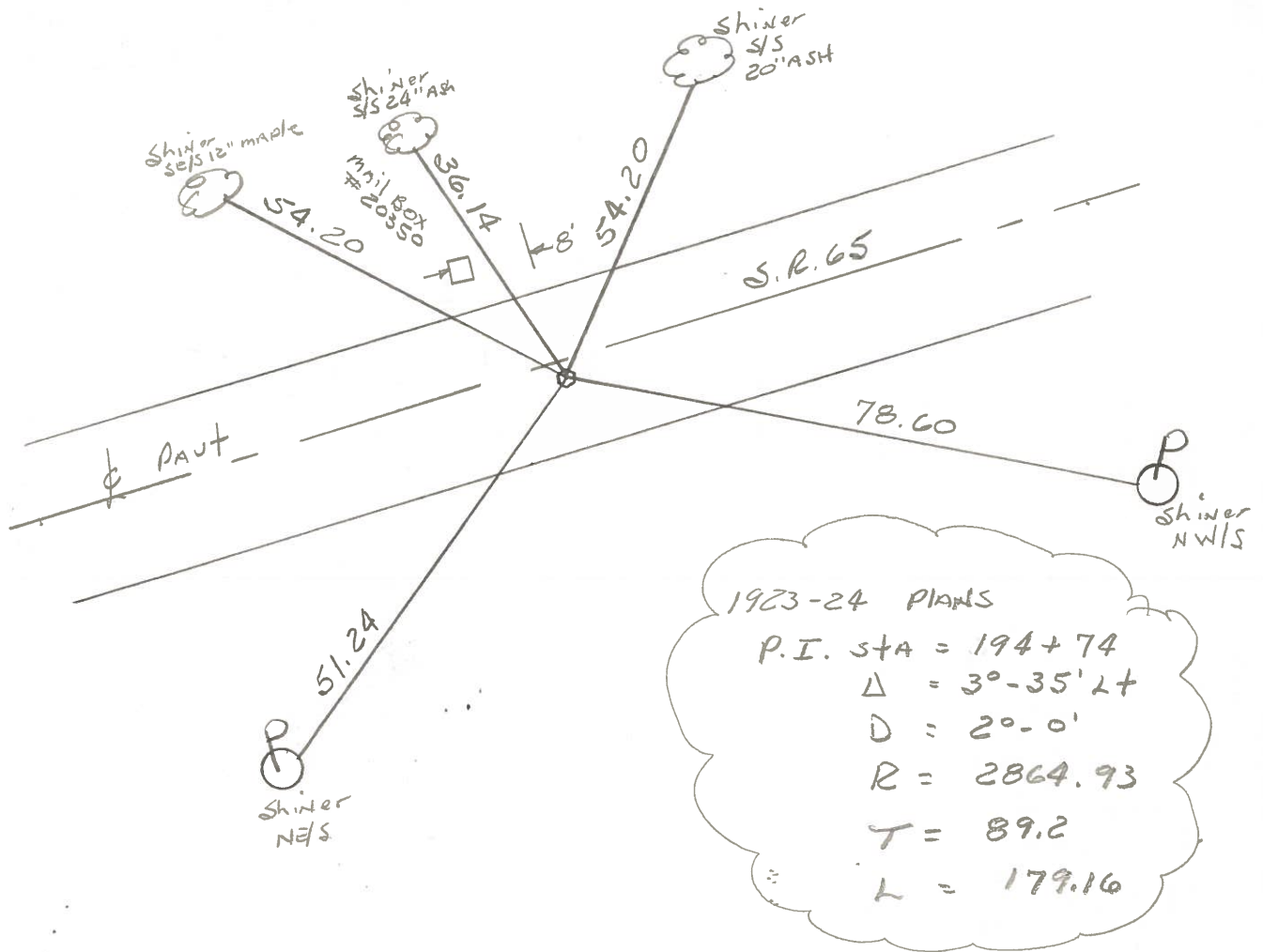
Personnel Hoffman



Householder

Fd. small e.r. spk @ surface
1.4' Rt. of & PAUT
10.6 to N.E.P.
7.5 to S.E.P.

Project stat 292+35



1923-24 PLANS
P.I. STA = 194+74
 $\Delta = 30-35' 24$
D = 20-0'
R = 2864.93
T = 89.2
L = 179.16

PERSONNEL	TITLE	PERSONNEL	TITLE
<u>BURNSIDE</u>			
<u>SMITH</u>			
<u>BOWERS</u>			

COUNTY WOOD DATE 2-1-72
 S. R. 65 WEATHER CLOUDY
 SEC. WASHINGTON Twp TEMP. +28°

DESCRIPTION _____ LEFT _____ CENTER LINE _____ RIGHT _____ JOB NO. _____

