

O.D.O.T. DISTRICT 2 SURVEY OFFICE (USE ONLY)

PERSONNEL

REFERENCE NO. 12 E

SHEET 21 OF 22

NOTES RHOADES

DATE 4/11/22

ROUTE SR 65

H.C. NIESE

WEATHER FAIR

COUNTY WOOD

R.C. KETNER

TEMP. 63°

TOWNSHIP WASHINGTON

O'DONNELL

SECTION 35

DWG BY RHOADES PID 95796

T 6 N R 9 E

TYPE MONUMENT MAG/WASHER

ON SURFACE - ~~BELOW~~ ON

OFFSET 1.4' RT

8' TO RT EDGE PAVEMENT

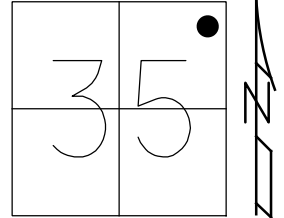
STATION: 305+85.32

HORZ. DATUM: NAD83 2011

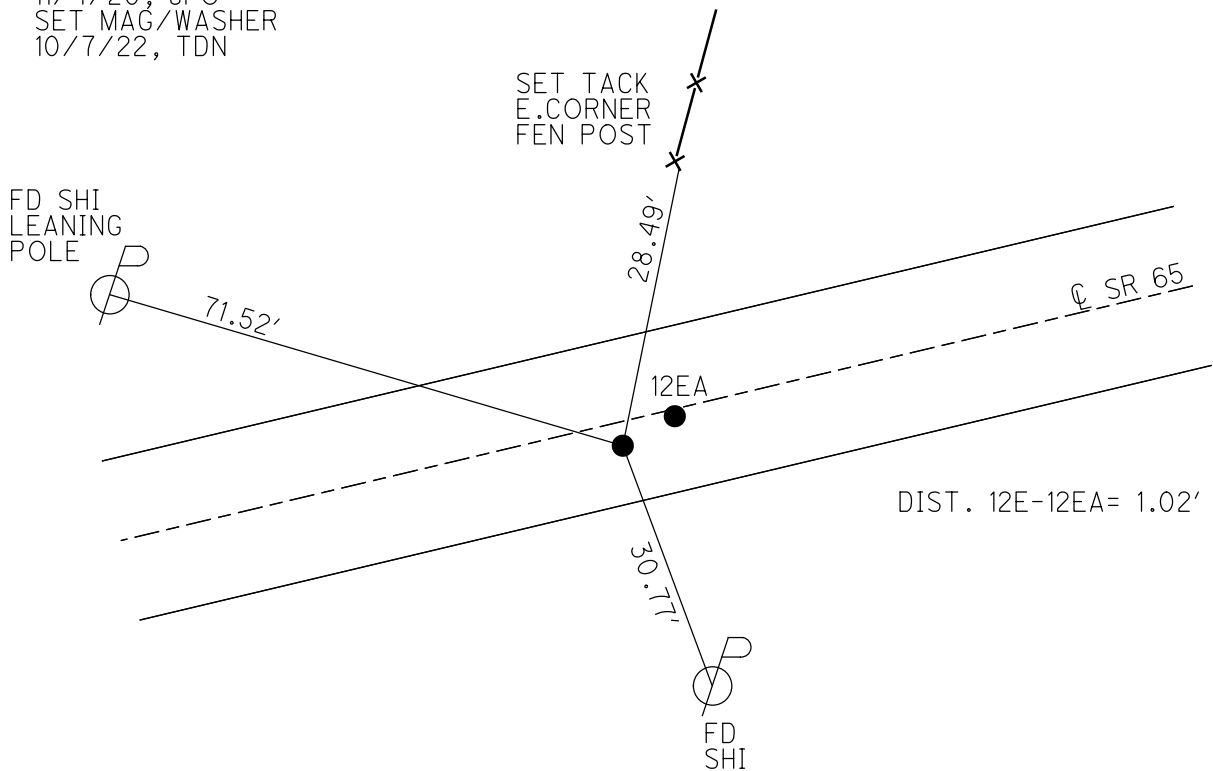
GEOID: NAVD88 2018

GRID: NORTHING: 650276.054

EASTING: 1615345.927



RECORD:  
 FD R.R.SPIKE  
 1.5' DOWN  
 6/23/04, DCH  
 SET MAG/WASHER  
 9/16/04, SAH  
 SET MAG/WASHER  
 REFE12  
 11/4/20, JFO  
 SET MAG/WASHER  
 10/7/22, TDN



# O.D.O.T. DISTRICT 2 SURVEY OFFICE

PERSONNEL

REFERENCE NO. 12 E

SHEET 47 OF 49

NOTES Nuhfer

H.C. Homan

R.C. Atkins

DATE 6-23-04

WEATHER Sunny

TEMP. +78°F

ROUTE S.R. 65

COUNTY Wood

TOWNSHIP Washington

SECTION 35

T. 6 N. R. 9 E.

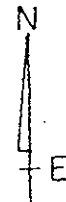
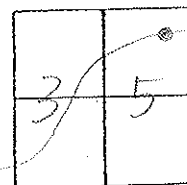
TYPE MONUMENT (A) RR Spk (B) PK/W

ON SURFACE - BELOW (A) (B) = 1.5" Down

~~LEFT/RIGHT~~ - (RIGHT) (A) 1.4' Rt. / (B) 0.4' Rt.

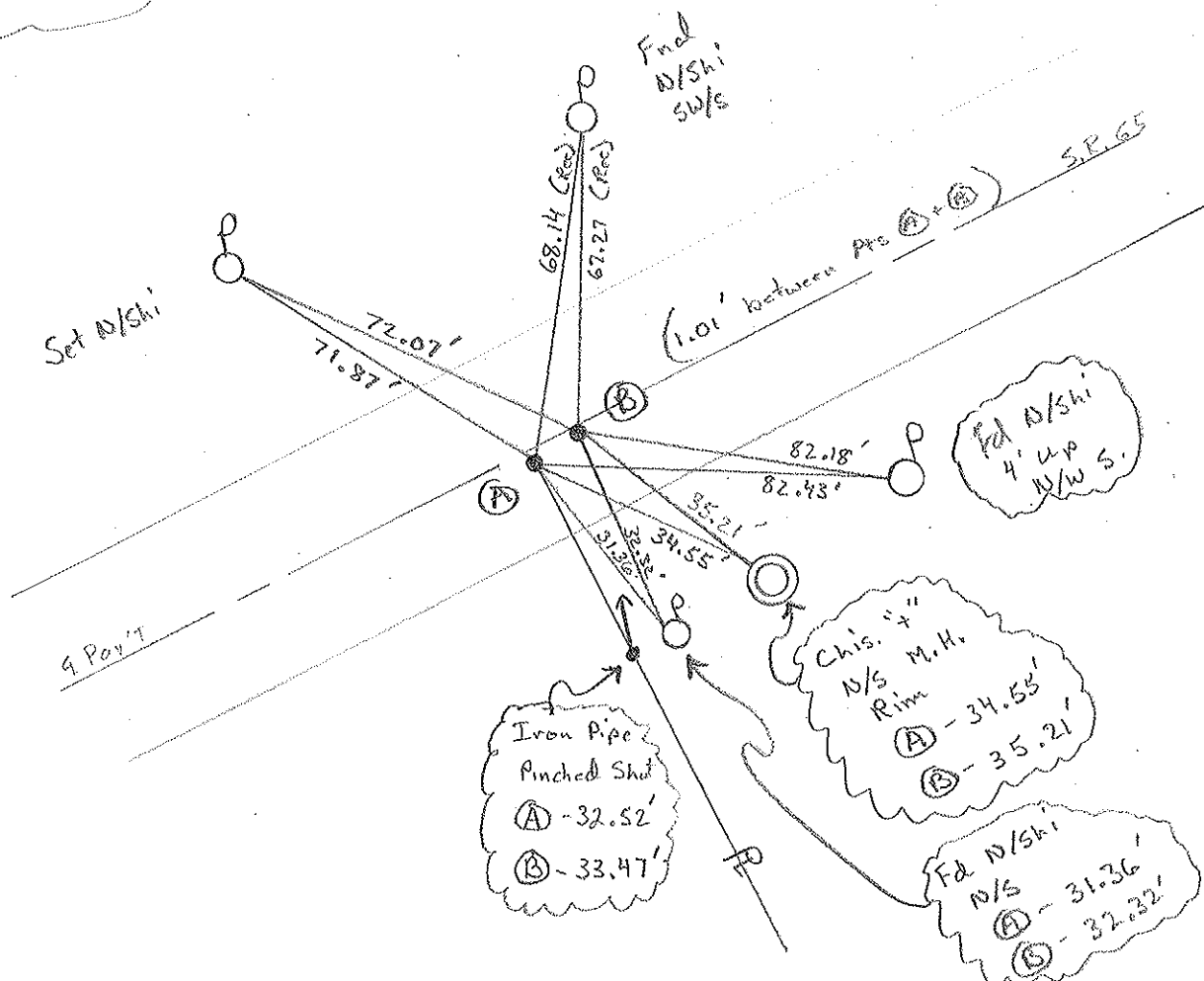
(A) 3.0 TO Rt. EDGE PAVEMENT

S.L.M. Pt. (A) 305+87 (1.01' Between Pts)



Note:  
Point "A"  
Set by F. Gossman  
Survey of August 1956  
on Record, Auditor's  
Office, Wood Co  
Court House

Set Mag/W  
Both Pts,  
9-16-04  
SAH



# O.D.O.T. DISTRICT 2 SURVEY OFFICE

PERSONNEL

REFERENCE NO. 12 E

SHEET 32 OF 34

NOTES BARNHISEL

H.C. CURTIS

DATE 4-17-92

ROUTE 65

R.C. VAN DUSEN

WEATHER RAIN

COUNTY WOOD

Loehke

TEMP. +50°

TOWNSHIP WASHINGTON

Remeto

Set P.K./WASHERS  
5-1-92  
C.L.

SECTION 35

T. 6 N. R. 9 E.

TYPE MONUMENT "A" RR SPK "B" PK & WASHER

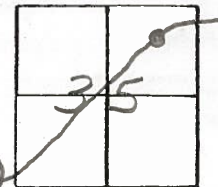
ON SURFACE - ~~BELOW~~ yes / yes

LEFT- & PAV'T. - RIGHT 1.0 RT / 0.3 LT

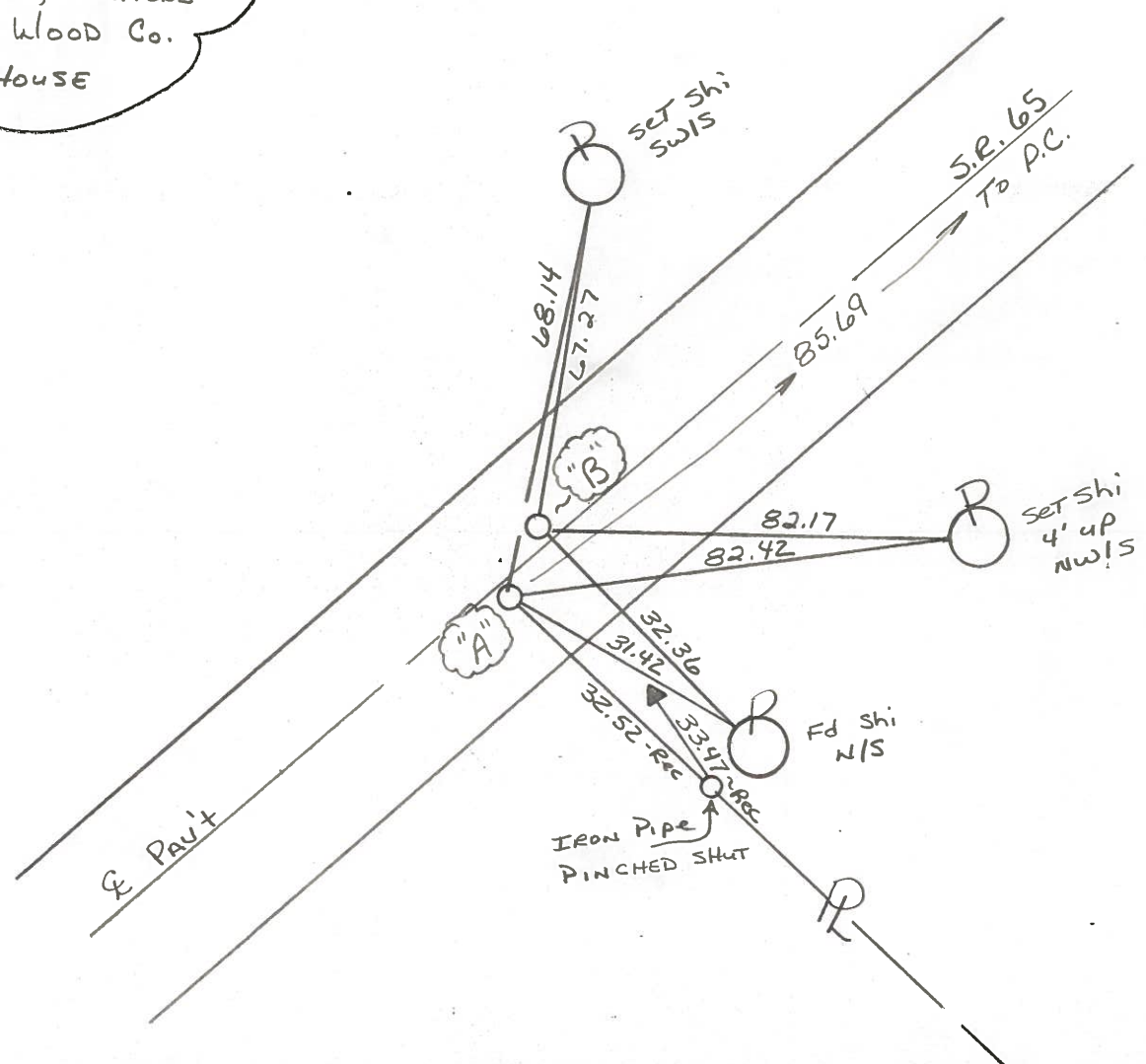
9.0' TO RT EDGE PAVEMENT

S.L.M. 305 + 87 PT "A"

(1.0 BETWEEN POINTS)



NOTE:  
POINT "A"  
SET BY F. GOSSMAN,  
SURVEY OF AUGUST 1956  
ON RECORD, AUDITORS  
OFFICE. WOOD CO.  
COURT HOUSE



OD.O.T. DISTRICT 2 SURVEY OFFICE

SHEET 40 OF

County Wood S.R. 65

Date 6-14-82  
12-14-81

Township Washington

Weather Partly Clear

Section 35

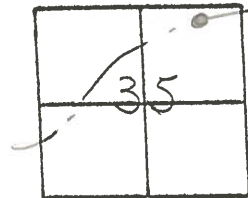
Temp. +34°

T.N, R.E

Personnel Hoffman

Householder

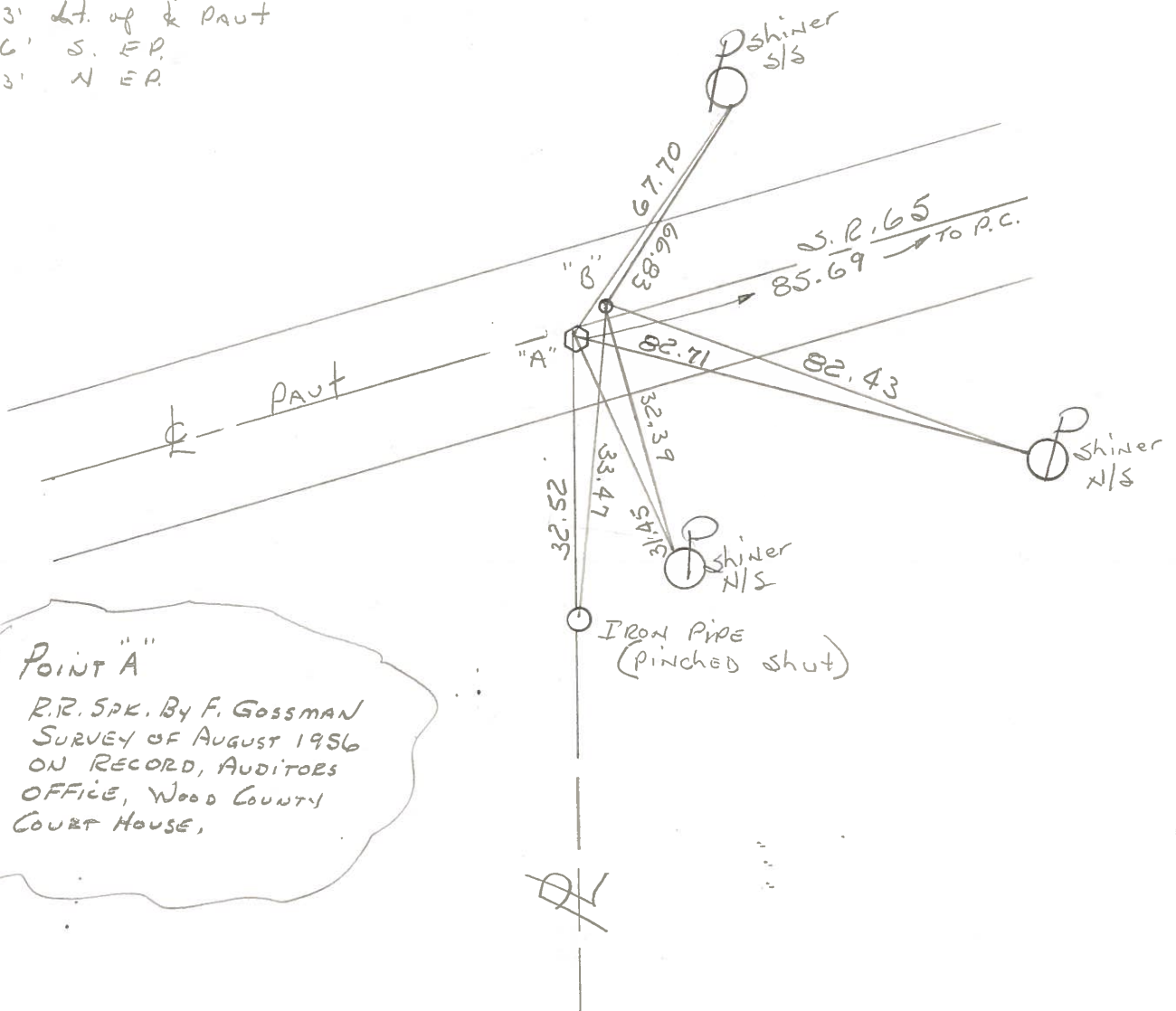
12-E



Pt. "A" Fd. R.R. SPK @ surface  
0.5' rt. of & PAUT  
8.5 TO S.E.P.  
9.9 TO N.E.P.

Protect sta ± 306 + 00

Pt "B" Fd P.K. Nail/shiner @ surface  
0.3' Lt. of & PAUT  
9.6' S. EP.  
9.3' N EP.



POINT "A"

R.R. SPK. BY F. GOSMAN  
SURVEY OF AUGUST 1956  
ON RECORD, AUDITORS  
OFFICE, WOOD COUNTY  
COURT HOUSE,

# O.D.O.T. DISTRICT 2 SURVEY OFFICE

PERSONNEL

REFERENCE NO. 12 E

SHEET 32 OF 34

NOTES BARNHISEL

H.C. CurTIS

R.C. VAN DUSEN

Loehake

Rometo

DATE 4-17-92

WEATHER RAIN

TEMP. +50°

Set P.K./WASHERS

5-1-92

C.L.

ROUTE 65

COUNTY WOOD

TOWNSHIP WASHINGTON

SECTION 35

T. 6 N R 9 E

TYPE MONUMENT "A" RR SOK "B" PK & WASHER

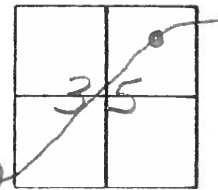
ON SURFACE - ~~BELOW~~ yes / yes

LEFT- & PAV'T. - RIGHT 1.0 RT / 0.3 LT

<sup>8.0'</sup> 9.0' TO RT EDGE PAVEMENT

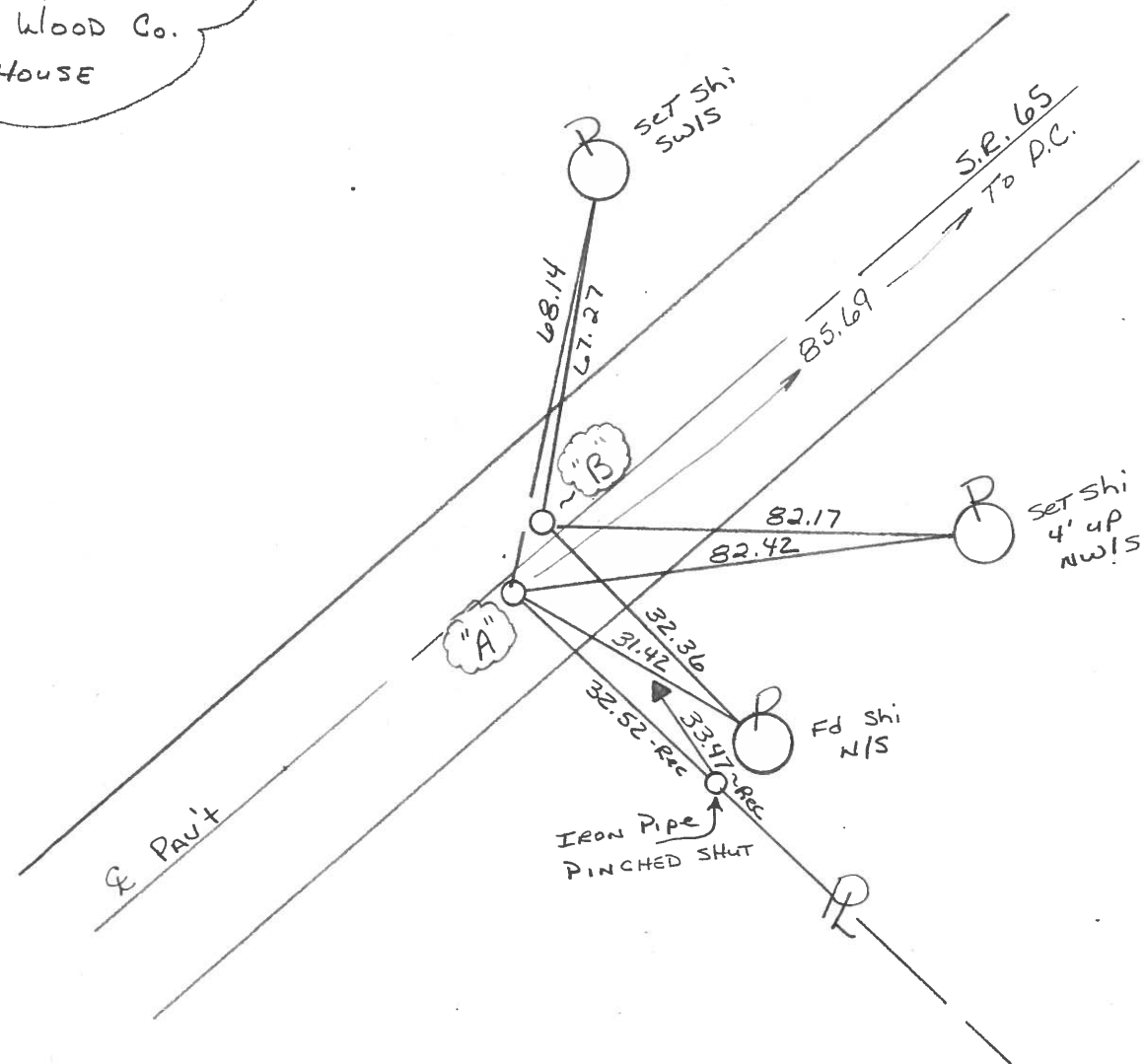
S.L.M. 305 + 87 Pt "A"

(1.0 BETWEEN POINTS)



A"  
B"

NOTE:  
POINT "A"  
SET BY F. GOSSMAN,  
SURVEY OF AUGUST 1956  
ON RECORD, AUDITORS  
OFFICE. WOOD CO.  
COURT HOUSE





PERSONNEL TITLE PERSONNEL TITLE

COUNTY Wood

DATE 6-24-59

S. R. #65

OK 1-25-66

WEATHER

SEC.

TEMP.

DESCRIPTION Wit. Ties S.R. #65

JOB NO.

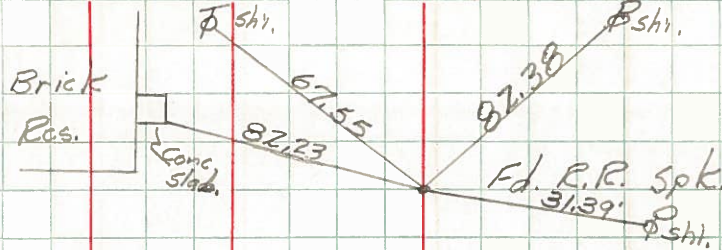
LEFT CENTER LINE RIGHT

12-E

OK 1-25-66

305+82.7

# 711



(6-Copperweld Markers set)

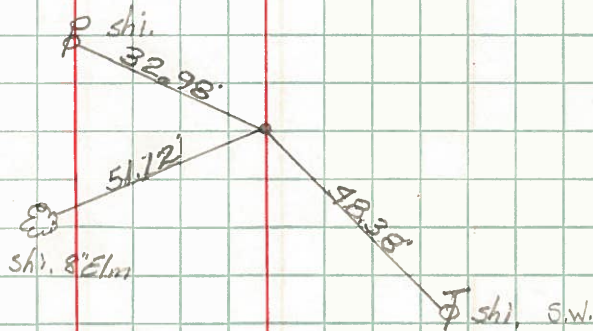
Re-set RR Spk.

12-I

OK 1-25-66

310+64.7  
S.R. 65 & 69  
Fd. R.R. spt.

# 712



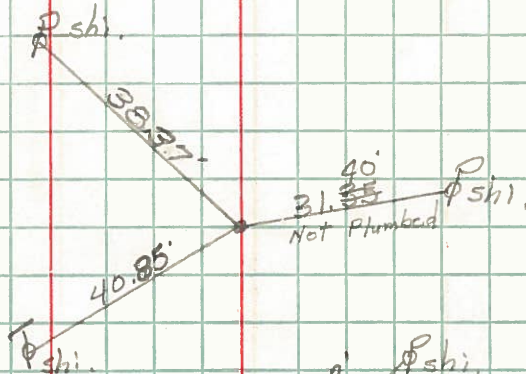
Re-set Copperweld Marker

(#100 on S.R. #69)

331+87.0  
Fd. R.R. spt.

# 713

OK 1-25-66

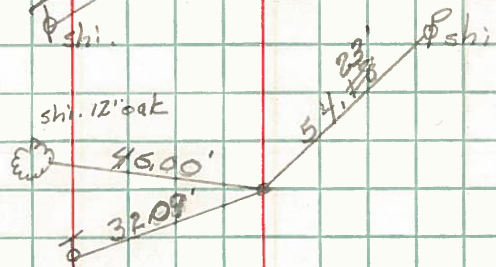


Re-set RR Spk.

332+99.75  
Fd. P.K. nail

# 714

OK 1-25-66

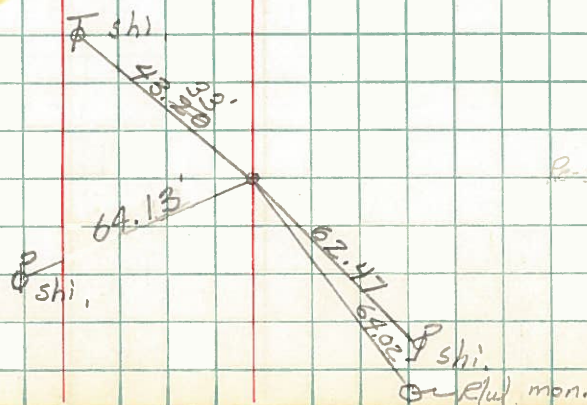


Re-set Post Spk.

338+47.05  
Fd. P.K. nail

# 715

OK 1-25-66



Re-set Post Spk.

Flu. mon.