

O.D.O.T. DISTRICT 2 SURVEY OFFICE (USE ONLY)

PERSONNEL

REFERENCE NO. 12 EA

SHEET 22 OF 22

NOTES RHOADES

DATE 4/11/22

ROUTE SR 65

H.C. NIESE

WEATHER FAIR

COUNTY WOOD

R.C. KETNER

TEMP. 63°

TOWNSHIP WASHINGTON

O'DONNELL

DWG BY RHOADES

PID 95796

SECTION 35

T 6 N R 9 E

TYPE MONUMENT MAG/WASHER

ON SURFACE - ~~BELOW~~ ON

OFFSET 0.4' ~~LT~~ : RT

9' TO RT EDGE PAVEMENT

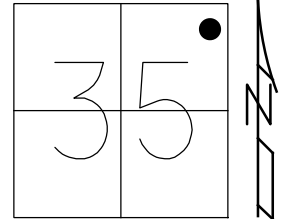
STATION: 305+86.34

HORZ.DATUM: NAD83 2011

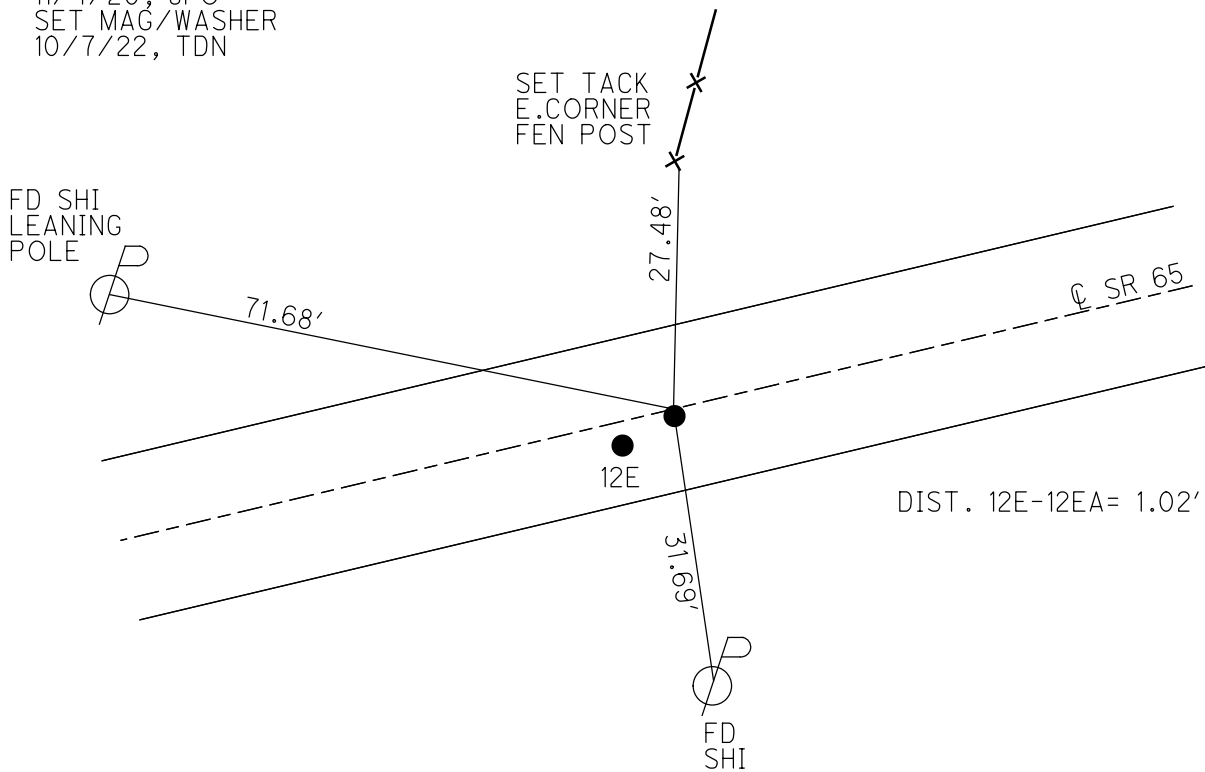
GEOID: NAVD88 2018

GRID: NORTHING: 650277.065

EASTING: 1615345.895



RECORD:
 FD P.K./WASHER
 1.5' DOWN
 6/23/04, DCH
 SET MAG/WASHER
 9/16/04, SAH
 SET MAG/WASHER
 REFEA12
 11/4/20, JFO
 SET MAG/WASHER
 10/7/22, TDN



O.D.O.T. DISTRICT 2 SURVEY OFFICE

PERSONNEL

REFERENCE NO. 12 E

SHEET 47 OF 49

NOTES Nuhfer

H.C. Homan

R.C. Atkins

DATE 6-23-04

WEATHER Sunny

TEMP. +78°F

ROUTE S.R. 65

COUNTY Wood

TOWNSHIP Washington

SECTION 35

T. 6 N. R. 9 E.

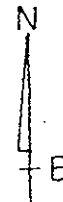
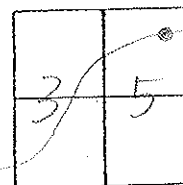
TYPE MONUMENT (A) RR Spk (B) PK/W

ON SURFACE - BELOW (A) (B) = 1.5" Down

~~LEFT HAND SIDE~~ - (RIGHT) (A) 1.4' Rt. / (B) 0.4' Rt.

(A) 3.0' TO Rt. EDGE PAVEMENT

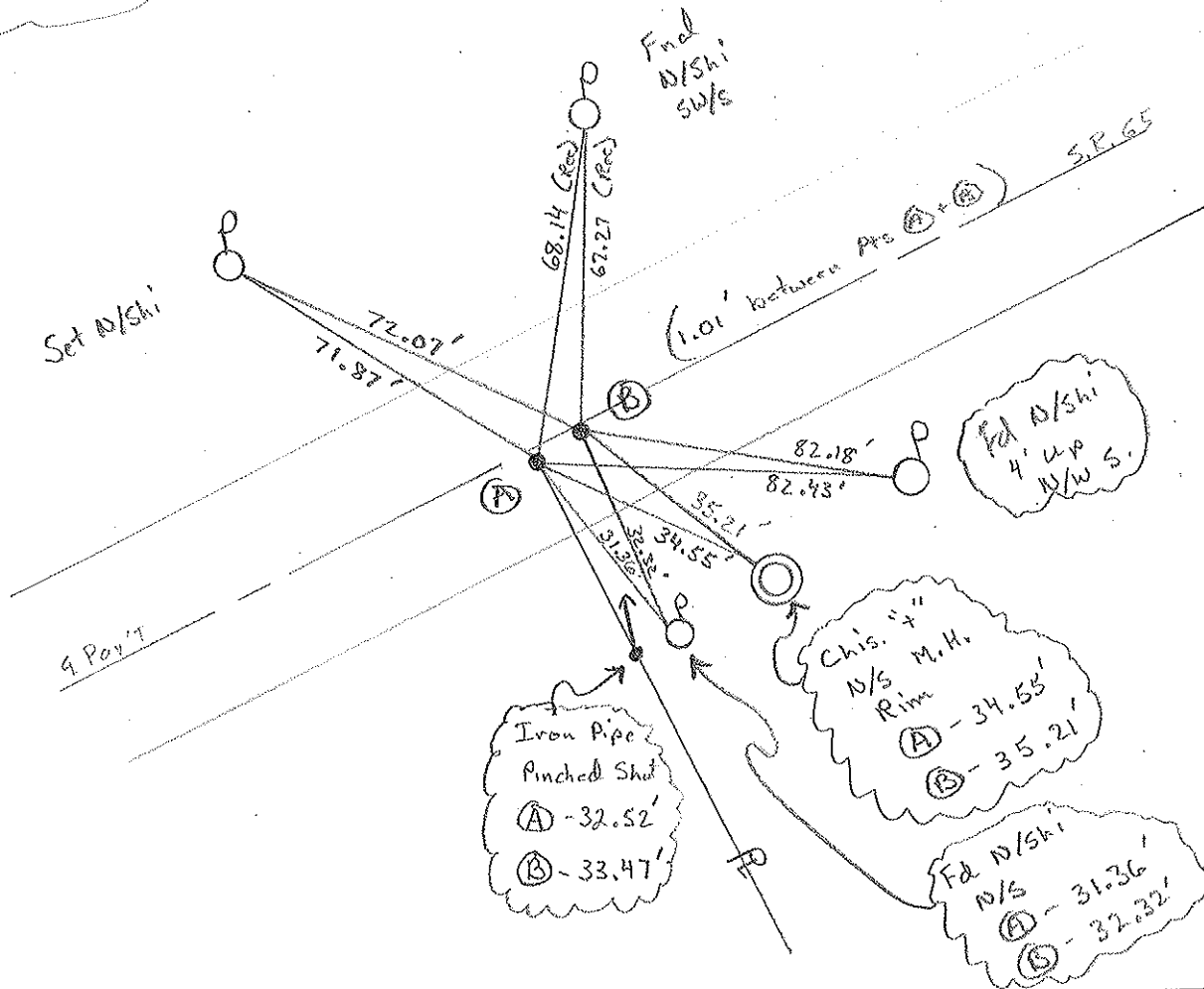
S.L.M. Pt. (A) 305+87 (1.01' Between Pts)



Note 1:

Point "A"
Set by F. Gossman
Survey of August 1956
on Record, Auditor's
Office, Wood Co
Court House

Set Mag/W
Both Pts,
9-16-04
SAH



O.D.O.T. DISTRICT 2 SURVEY OFFICE

PERSONNEL

REFERENCE NO. 12 E

SHEET 32 OF 34

NOTES BARNHISEL

H.C. CURTIS

DATE 4-17-92

ROUTE 65

R.C. VAN DUSEN

WEATHER RAIN

COUNTY WOOD

Loehke

TEMP. +50°

TOWNSHIP WASHINGTON

Remeto

Set P.K./WASHERS
5-1-92
C.L.

SECTION 35

T. 6 N. R. 9 E

TYPE MONUMENT "A" RR SPK "B" PK & WASHER

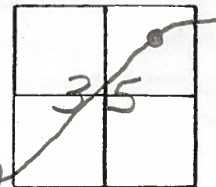
ON SURFACE - ~~BELOW~~ yes / yes

LEFT- & PAV'T. - RIGHT 1.0 RT / 0.3 LT

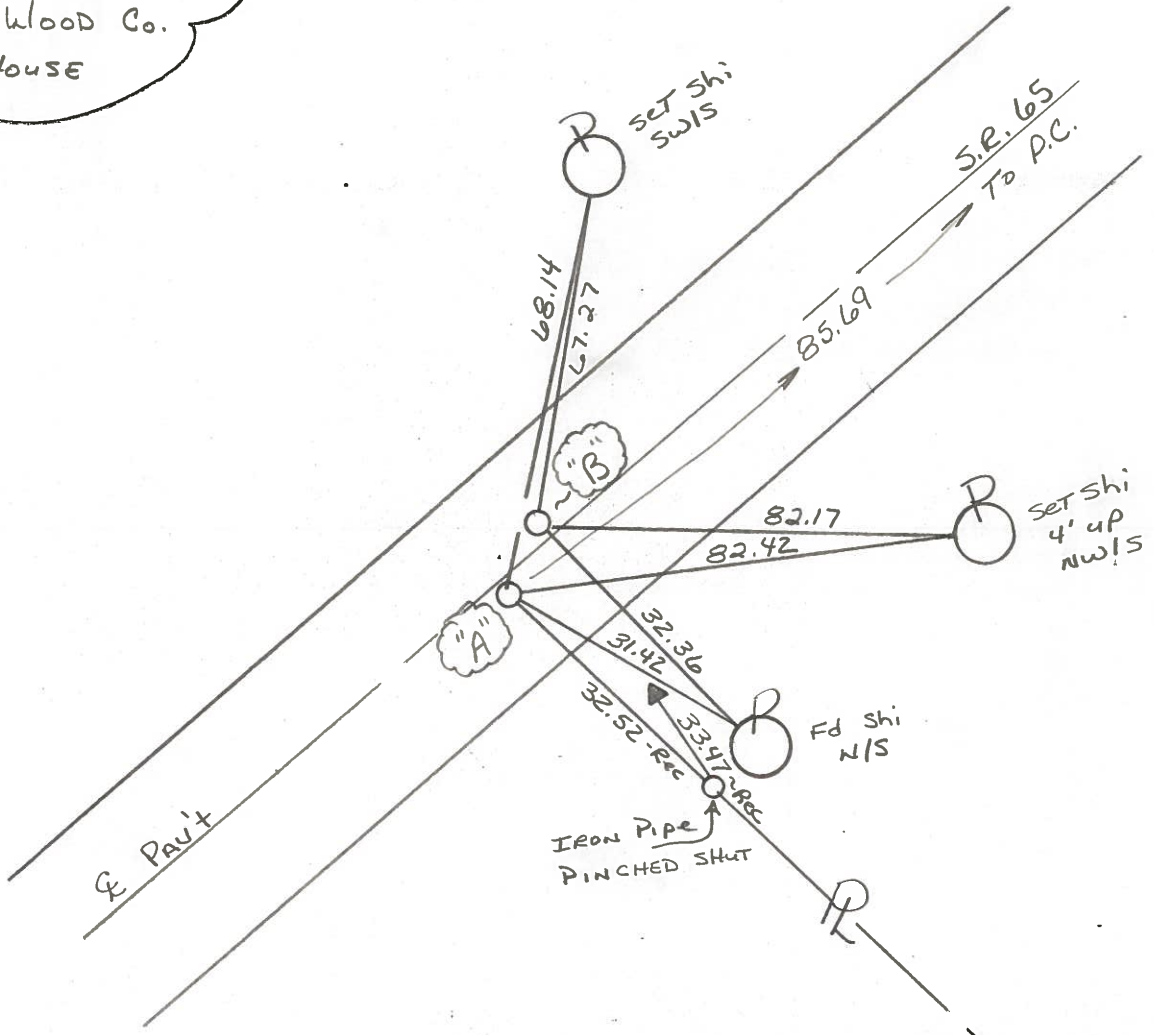
9.0' TO RT EDGE PAVEMENT

S.L.M. 305 + 87 PT "A"

(1.0 BETWEEN POINTS)



NOTE:
POINT "A"
SET BY F. GOSSMAN,
SURVEY OF AUGUST 1956
ON RECORD, AUDITORS
OFFICE. WOOD CO.
COURT HOUSE



OD.O.T. DISTRICT 2 SURVEY OFFICE

SHEET 40 OF

County Wood S.R. 65

Date 6-14-82
12-14-81

Township Washington

Weather Partly Clear

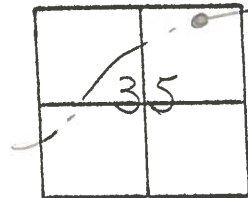
Section 35

Temp. +34°

T.N, R.E

Personnel Hoffman
Householder

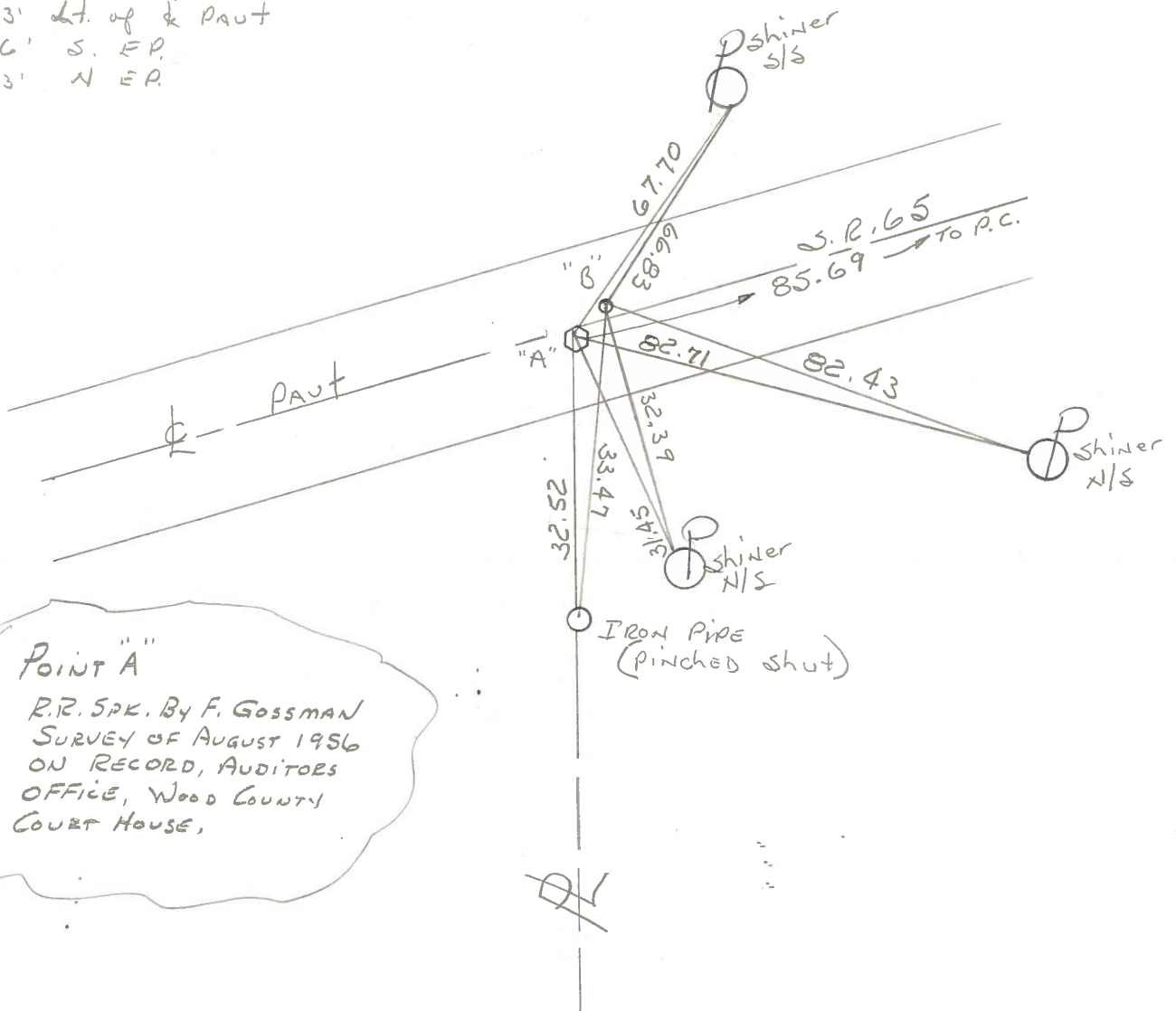
12-E



Pt. "A" Fd. R.R. SPK @ surface
0.5' rt. of & PAUT
8.5 TO S.E.P.
9.9 TO N.E.P.

Protect sta ± 306 + 00

Pt "B" Fd P.K. Nail/shiner @ surface
0.3' Lt. of & PAUT
9.6' S. EP.
9.3' N EP.



POINT "A"

R.R. SPK. BY F. GOSSMAN
SURVEY OF AUGUST 1956
ON RECORD, AUDITORS
OFFICE, WOOD COUNTY
COURT HOUSE,

O.D.O.T. DISTRICT 2 SURVEY OFFICE

PERSONNEL

REFERENCE NO. 12 E

SHEET 32 OF 34

NOTES BARNHISEL

H.C. CurTIS

R.C. VAN DUSEN

Loehake

Rometo

DATE 4-17-92

WEATHER RAIN

TEMP. +50°

Set P.K./WASHERS

5-1-92

C.L.

ROUTE 65

COUNTY WOOD

TOWNSHIP WASHINGTON

SECTION 35

T. 6 N R. 9 E

TYPE MONUMENT "A" RR SOK "B" PK & WASHER

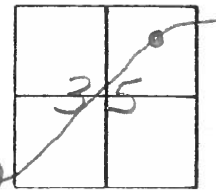
ON SURFACE - ~~BELOW~~ yes / yes

LEFT- & PAV'T. - RIGHT 1.0 RT / 0.3 LT

^{8.0'} 9.0' TO RT EDGE PAVEMENT

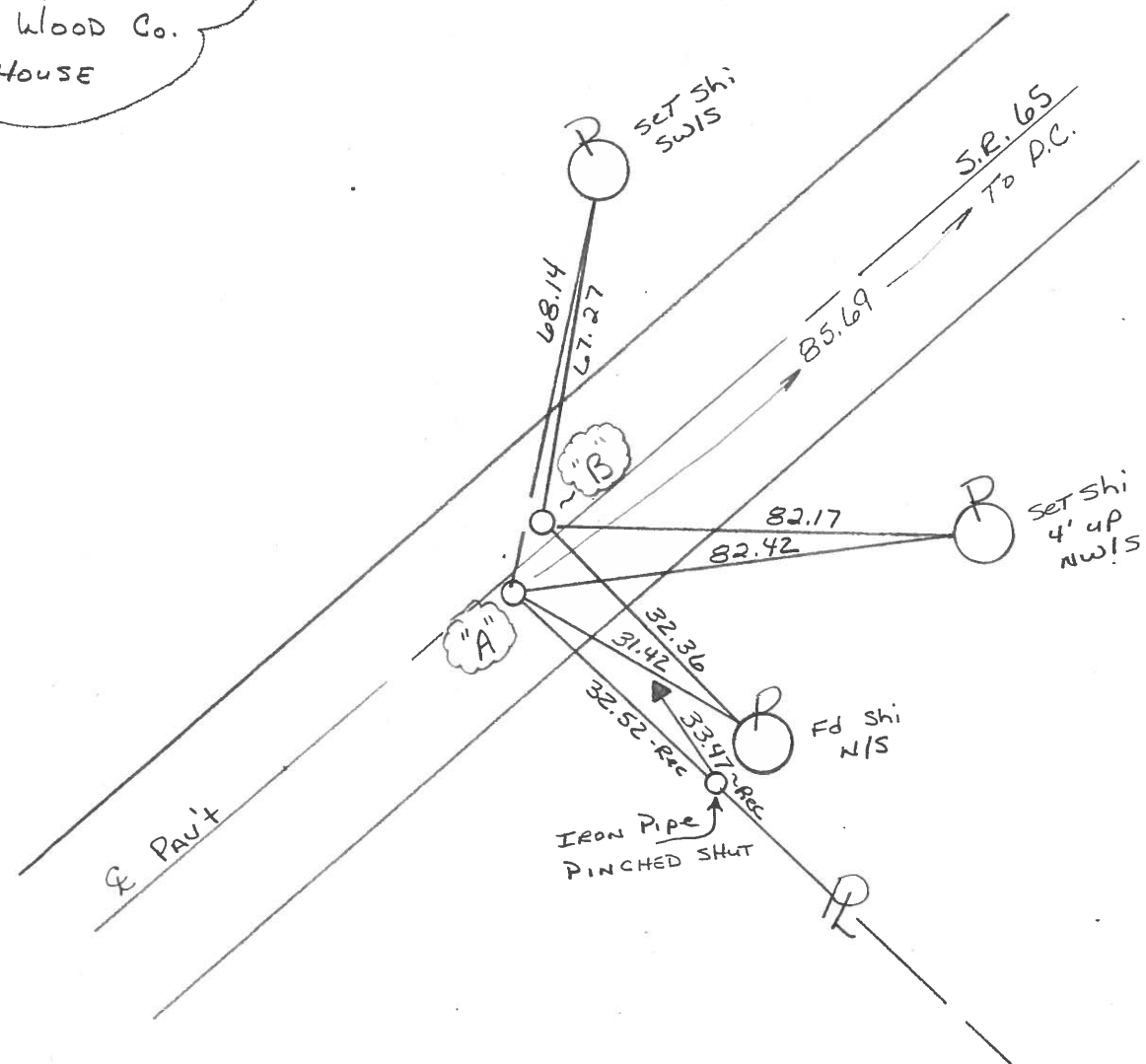
S.L.M. 305 + 87 Pt "A"

(1.0 BETWEEN POINTS)



A"
B"

NOTE:
POINT "A"
SET BY F. GOSSMAN,
SURVEY OF AUGUST 1956
ON RECORD, AUDITORS
OFFICE. WOOD CO.
COURT HOUSE



PERSONNEL TITLE PERSONNEL TITLE

COUNTY Wood

DATE 6-24-59

OK 1-25-66

S. R. #65

WEATHER

SEC.

TEMP.

DESCRIPTION Wit. Ties S.R. #65

JOB NO.

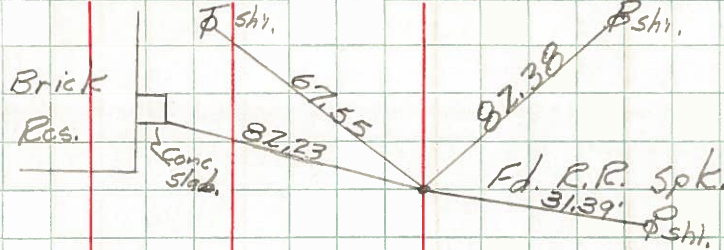
LEFT CENTER LINE RIGHT

12-E

OK 1-25-66

305+82.7

711



(6-Copperweld Markers set)

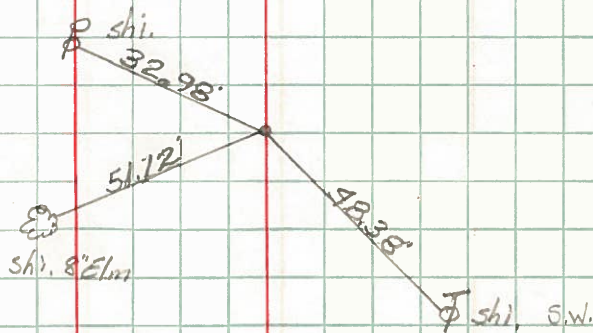
Re-set RR Spk.

12-I

OK 1-25-66

310+64.7
S.R. 65 & 69
Fd. R.R. spt.

712



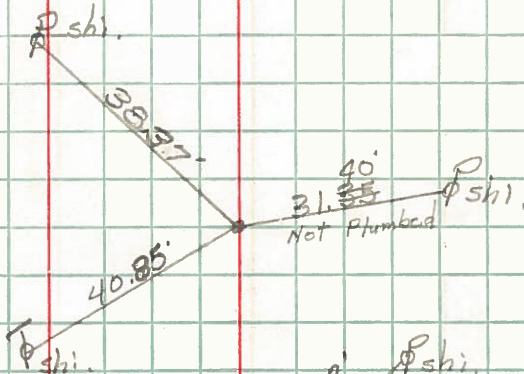
Re-set Copperweld Marker

(#100 on S.R. #69)

331+87.0
Fd. R.R. spt.

713

OK 1-25-66

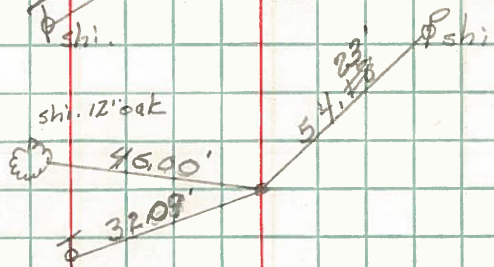


Re-set RR Spk.

332+99.75
Fd. P.K. nail

714

OK 1-25-66

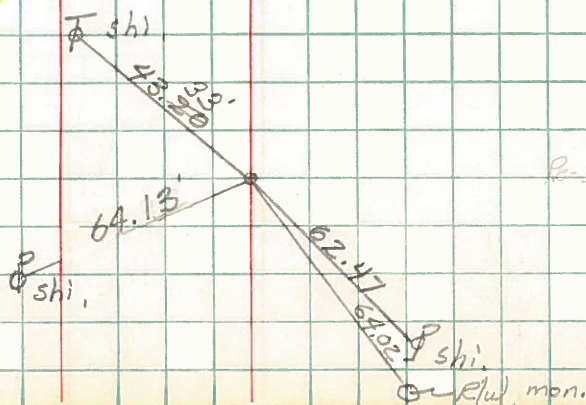


Re-set Post Spk.

338+47.05
Fd. P.K. nail

715

OK 1-25-66



Re-set Post Spk.